


MAUI
COLLECTION



Downtown Doral

 Artist's conception and for the convenience of reference. All dimensions are approximate. The developer reserves the right to change and alter materials, specifications, features, dimensions and designs without notice. Oral representations cannot be relied upon as correctly stating the representations of the developer. For correct representations, reference should be made to documents required by section 718.503 of the Florida Statutes furnished by the developer to the buyer or lessee. Pictures and photographs are solely for illustrative purposes and should not be relied upon when making a decision to purchase a home. Hardscape, landscape and other items shown may be decorator suggestions that are not included in the purchase price and availability may vary. Prices, features, elevations, floor plans and lot details are subject to change without notice.



INSIDE YOUR HOME

- 12"x24" porcelain tile flooring by Daltile in all main living areas
- Premium wood flooring in all bedrooms and on staircases in several color choices
- Statement staircase with stainless steel hand rail and stringers
- LED recessed square lighting throughout home
- Modern style 8' wood interior doors
- Square lever door hardware by Baldwin®
- Modern wood door casings and baseboards
- Front load washer and dryer, quartz countertop, wood cabinetry by Italkraft, faucet by Kohler® and sink by Kohler/ Sterling® in laundry room
- Finishes by Kohler® in all bathrooms
- Built in smart home technology
- Energy efficient natural gas tankless hot water heater
- Volume ceilings throughout ranging from 9'4" to 11' (per plan and room)
- Vessel sink and premium toilet by Kohler® in powder room

INSIDE YOUR KITCHEN

- 42" Subzero® refrigerator with panels by Italkraft to match cabinets
- Wolf® oven with microwave
- Subzero® under-counter wine cellar
- 36" Wolf® gas cooktop
- Elegant stainless-steel hood
- Large stainless-steel single bowl under-counter mount sink by Kohler®
- Professional sink faucet with pullout spout by Kohler®
- Premium quartz countertops with mitered edge in several color choices
- Full tile backsplash by Daltile in many designs and color choices
- Premium high gloss or wood veneer cabinetry with soft close hinges by Italkraft
- Premium high gloss or wood veneer cabinetry by Italkraft on kitchen island

INSIDE YOUR BATHROOMS

MASTER BATHROOM

- 12"x24" porcelain by Daltile on floor and shower walls with accent mosaic tile
- Kohler® freestanding bathtub per plan and Kohler® faucets
- Kohler® bidet and toilet
- Tall single handle faucet by Kohler®
- Vox vessel sinks by Kohler®
- Floating high gloss lacquer or wood veneer cabinetry by Italkraft in several color choices
- Premium quartz countertops with mitered edge in several color choices

SECONDARY BATHROOMS

- 12"x24" porcelain by Daltile on floor and shower walls with accent mosaic tile
- Rectangular undermount sink by Kohler®
- Single handle faucets by Kohler®
- Floating cabinetry by Italkraft in several color choices
- Premium quartz countertops with mitered edge in several color choices



MAUI

MODEL A

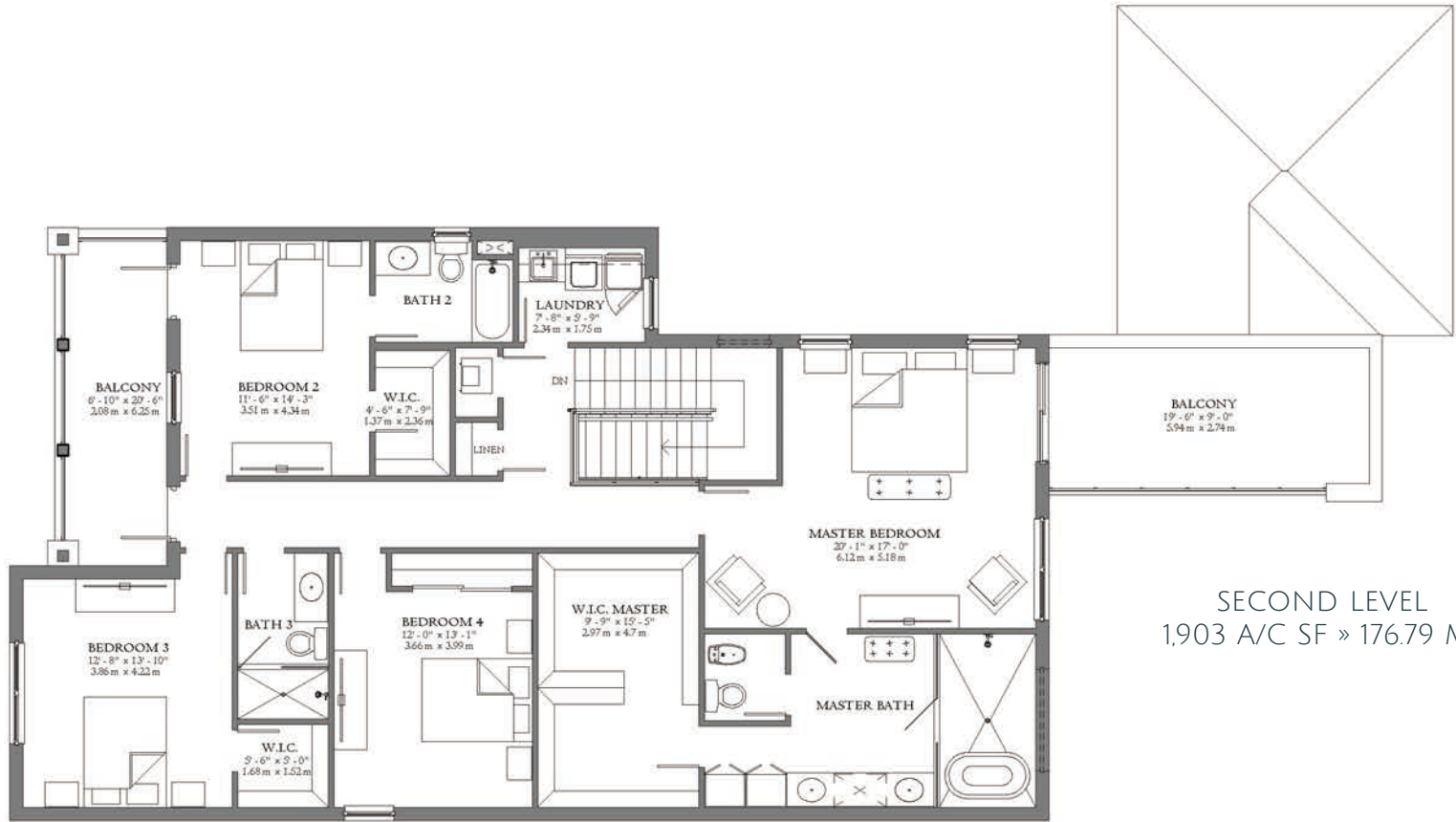
Two-Story
Single-Family Home
4 bedrooms, 3.5 bathrooms,
2-car garage.

3,723 AC SF » 345.87 M²
4,874 TOTAL SF » 452.80 M²

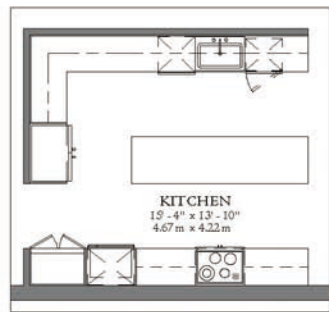
SEE ADDITIONAL OPTIONS



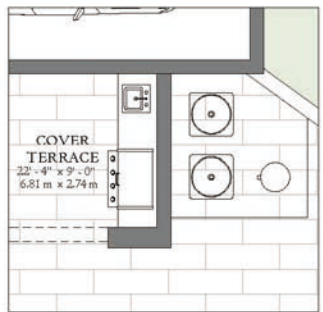
FIRST LEVEL
1820 A/C SF » 169.08 M²



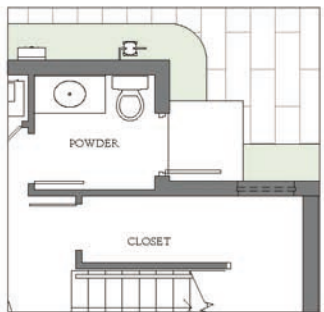
SECOND LEVEL
1903 A/C SF » 176.79 M²



ALTERNATE KITCHEN



SUMMER KITCHEN



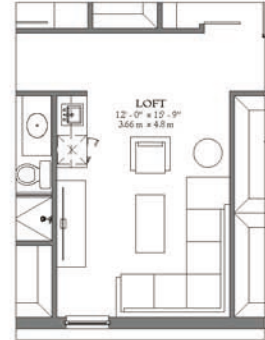
DOOR AT POWDER ROOM



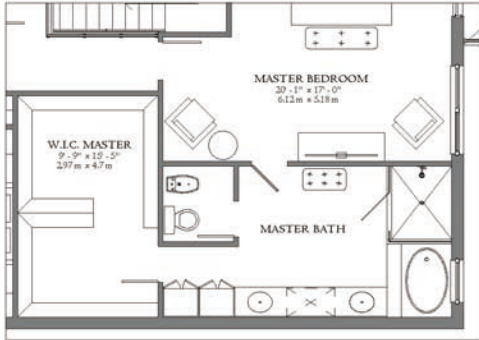
DEN WITH WET BAR
IN LIEU OF BEDROOM 4



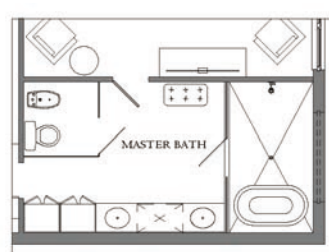
LOFT IN LIEU OF
BEDROOM 4



LOFT WITH WET BAR
IN LIEU OF BEDROOM 4



ALTERNATE MASTER BATHROOM



GLASS PARTITION IN LIEU OF
WALL AT MASTER TOILET ROOM

OPTIONS



MAUI A | CONTEMPORARY - TWO-STORY



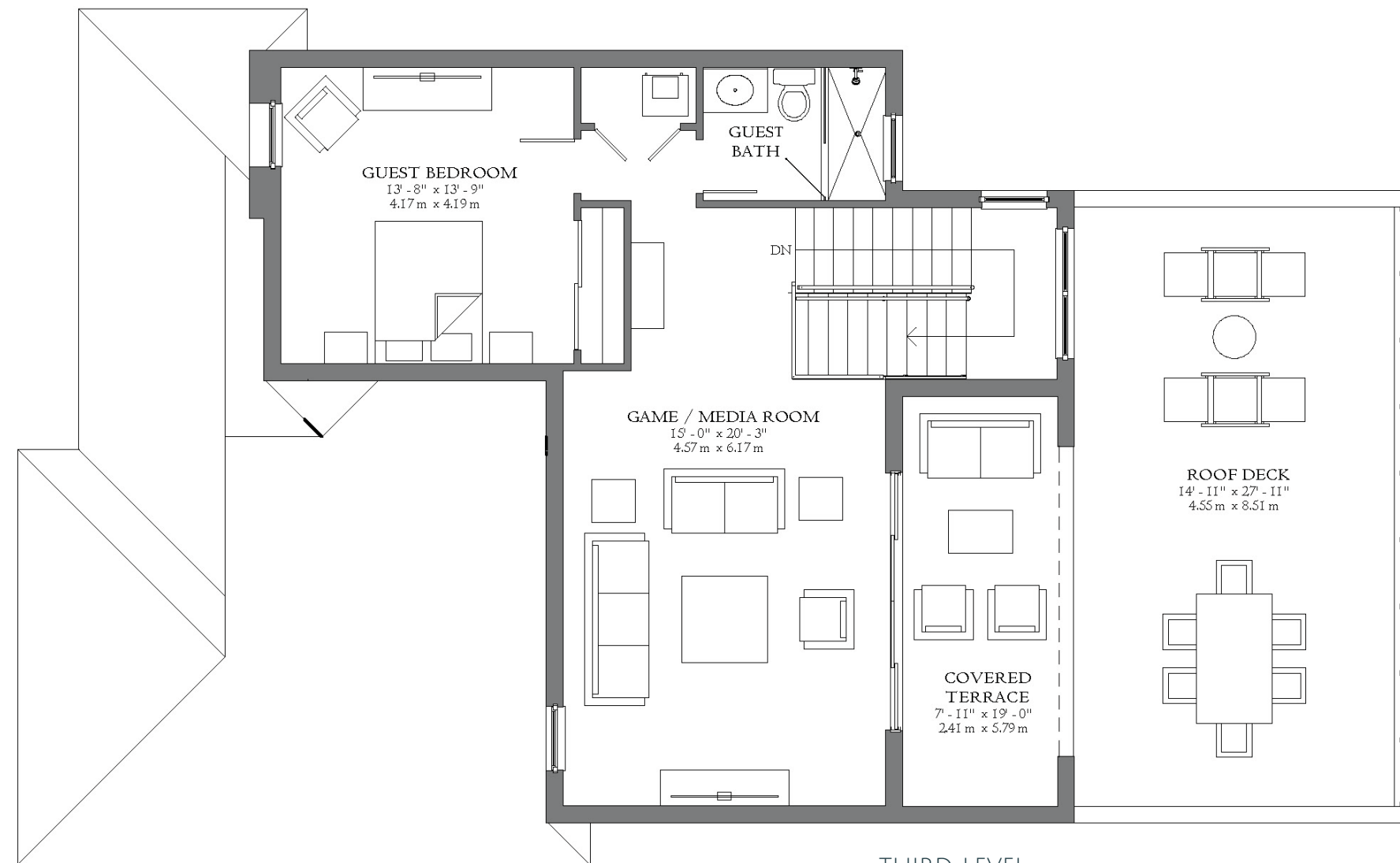
MAUI A | CONTEMPORARY - THREE-STORY



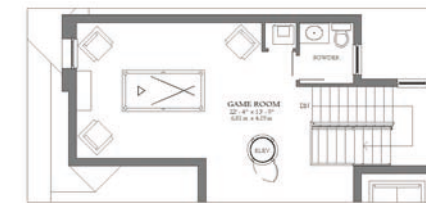
MAUI A | COASTAL CONTEMPORARY - TWO-STORY



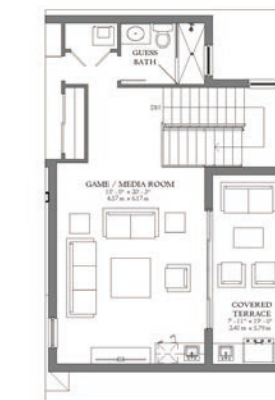
MAUI A | COASTAL CONTEMPORARY - THREE-STORY



GAME ROOM



ELEVATOR OPTION AT THIRD LEVEL



WET BAR + SUMMER KITCHEN

OPTIONS

MAUI MODEL A

Three-Story
Single-Family Home
5 bedrooms, 4.5 bathrooms,
roof deck and covered terrace

4,591 AC SF » 426.51 M²
6,360 TOTAL SF » 590.84 M²

SEE ADDITIONAL OPTIONS

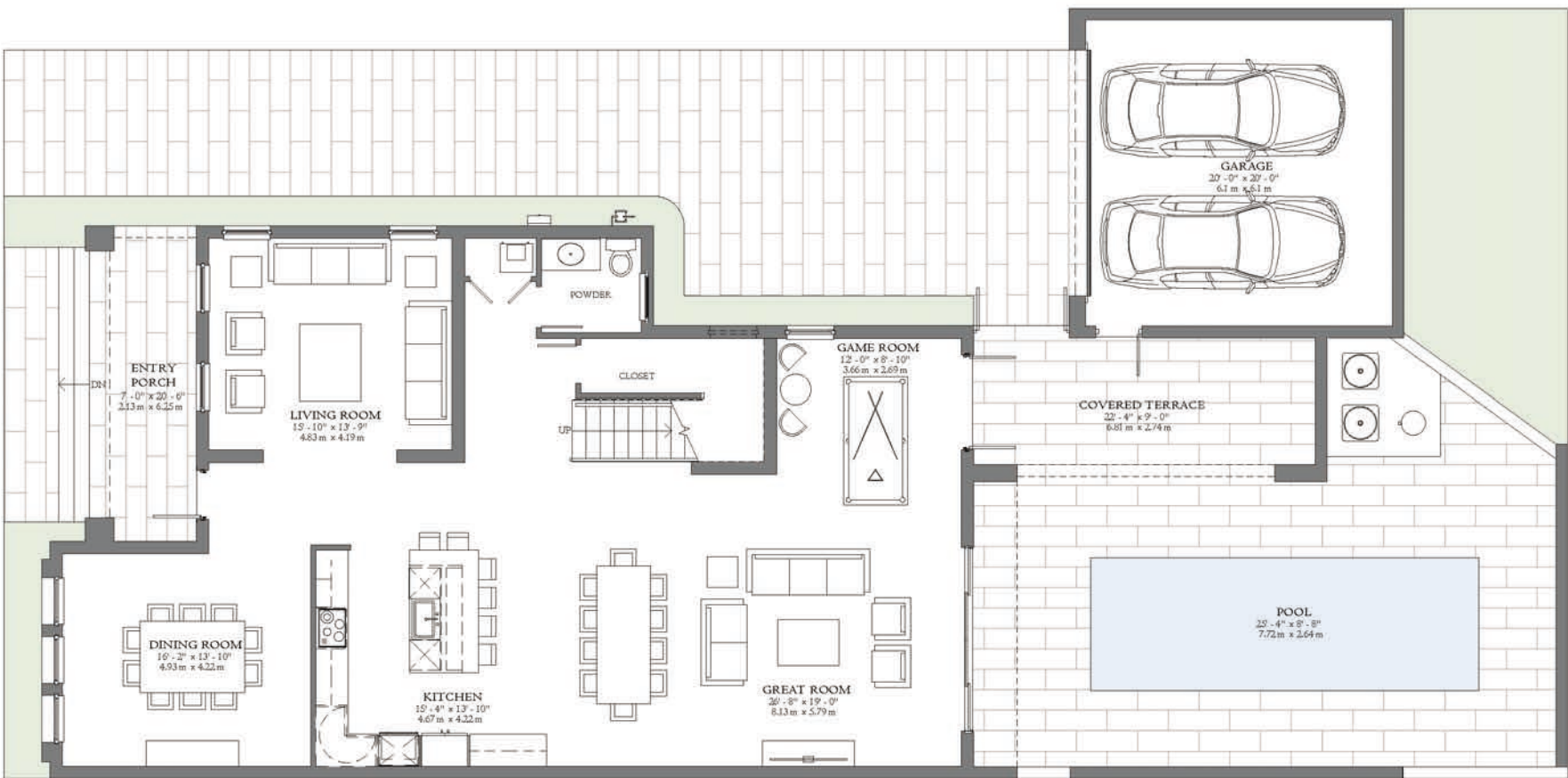
MAUI

MODEL B

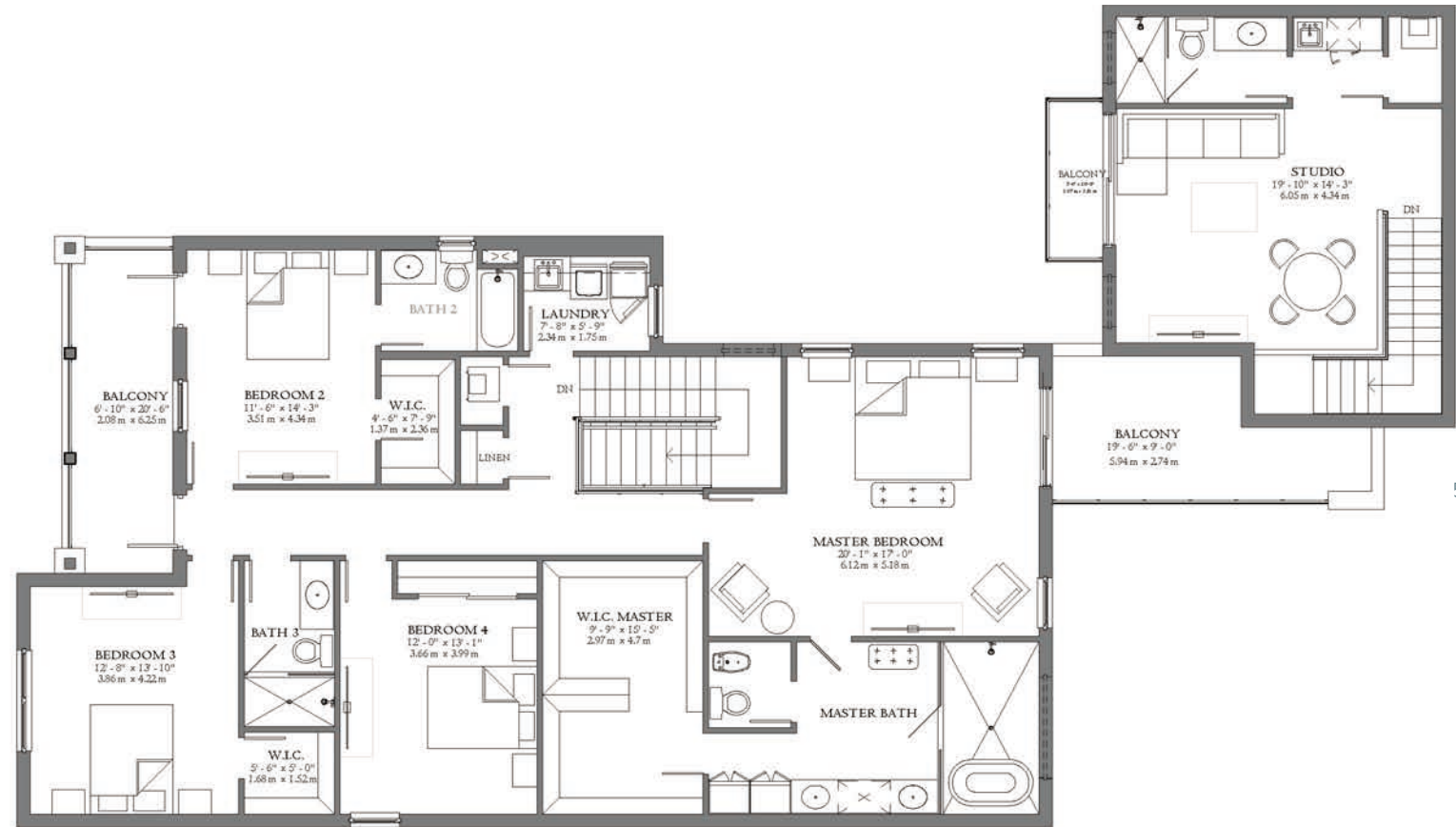
Two-Story
Single-Family Home
5 bedrooms, 4.5 bathrooms,
2-car garage with studio above

4,246 AC SF » 394.46 M²
5,498 TOTAL SF » 510.77 M²

SEE ADDITIONAL OPTIONS

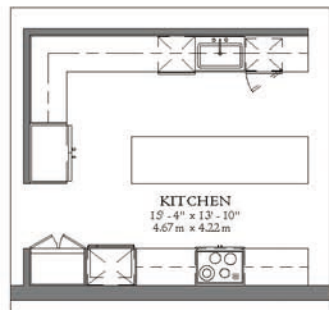


FIRST LEVEL
1820 A/C SF » 169.08 M²

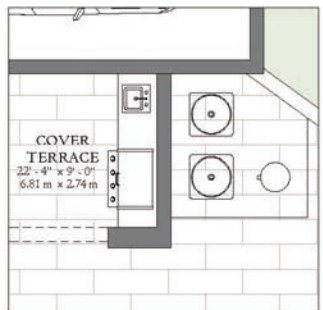


SECOND LEVEL
1,903 A/C SF » 176.79 M²

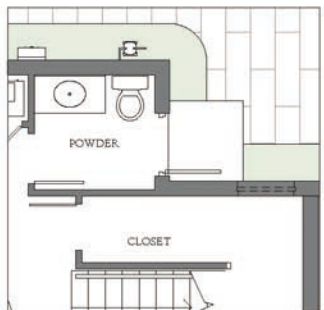
STUDIO
523 SF » 48.59 M²



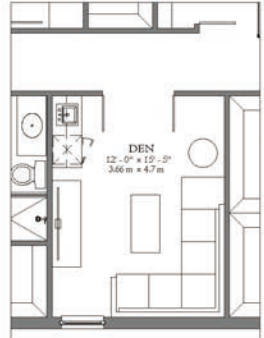
ALTERNATE KITCHEN



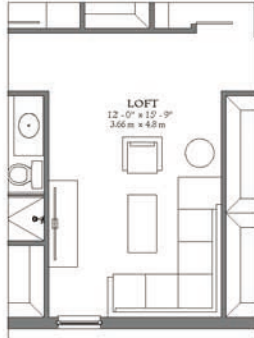
SUMMER KITCHEN



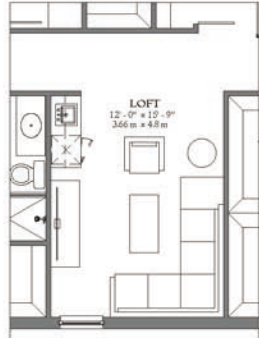
DOOR AT POWDER ROOM



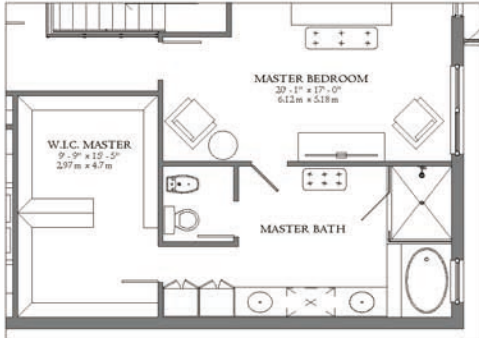
DEN WITH WET BAR
IN LIEU OF BEDROOM 4



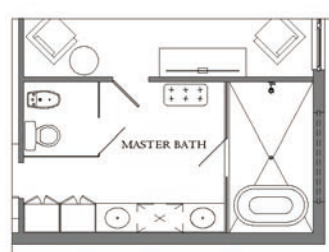
LOFT IN LIEU OF
BEDROOM 4



LOFT WITH WET BAR
IN LIEU OF BEDROOM 4



ALTERNATE MASTER BATHROOM



GLASS PARTITION IN LIEU OF
WALL AT MASTER TOILET ROOM

OPTIONS



MAUI B | CONTEMPORARY - TWO-STORY



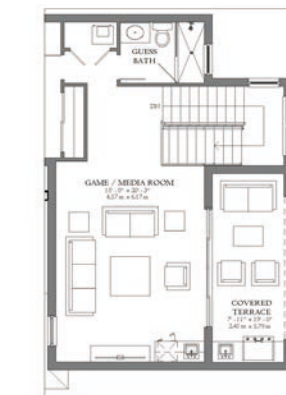
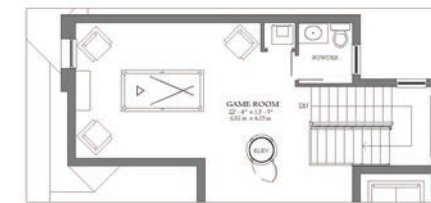
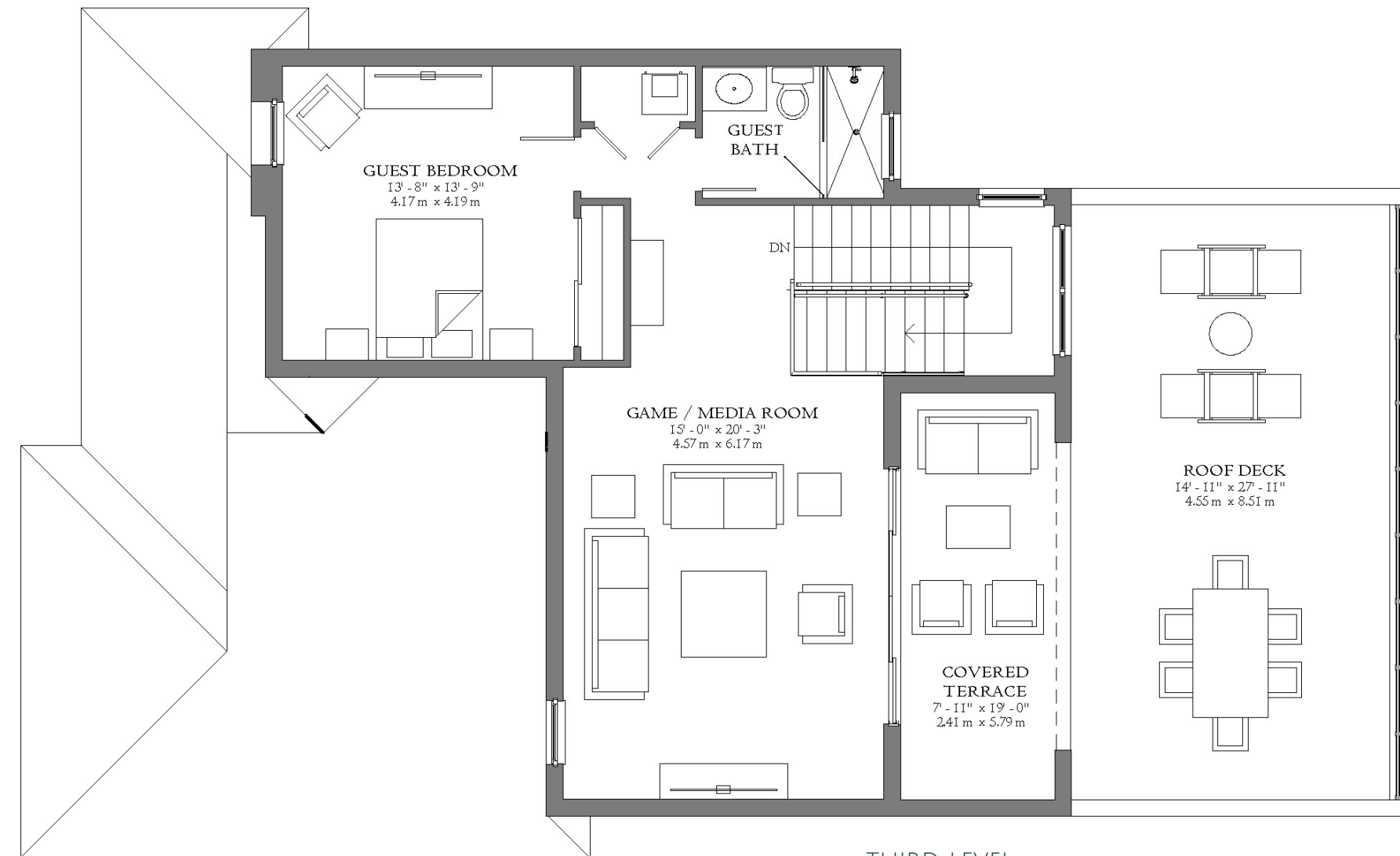
MAUI B | CONTEMPORARY - THREE-STORY



MAUI B | COASTAL CONTEMPORARY - TWO-STORY



MAUI B | COASTAL CONTEMPORARY - THREE-STORY



OPTIONS

MAUI

MODEL B

Three-Story
Single-Family Home
6 bedrooms, 5.5 bathrooms,
roof deck and covered terrace
2-car garage with studio above

5,114 AC SF » 475.11 M²
6,924 TOTAL SF » 643.26 M²

SEE ADDITIONAL OPTIONS



