


TAHITI

COLLECTION



Downtown Doral

 Artist's conception and for the convenience of reference. All dimensions are approximate. The developer reserves the right to change and alter materials, specifications, features, dimensions and designs without notice. Oral representations cannot be relied upon as correctly stating the representations of the developer. For correct representations, reference should be made to documents required by section 718.503 of the Florida Statutes furnished by the developer to the buyer or lessee. Pictures and photographs are solely for illustrative purposes and should not be relied upon when making a decision to purchase a home. Hardscape, landscape and other items shown may be decorator suggestions that are not included in the purchase price and availability may vary. Prices, features, elevations, floor plans and lot details are subject to change without notice.



INSIDE YOUR HOME

- 12"x24" porcelain tile flooring by Daltile in all main living areas
- Premium wood flooring in all bedrooms and on staircases in several color choices
- Statement staircase with stainless steel hand rail and stringers
- LED recessed square lighting throughout home
- Modern style 8' wood interior doors
- Square lever door hardware by Baldwin®
- Modern wood door casings and baseboards
- Front load washer and dryer, quartz countertop, wood cabinetry by Italkraft, faucet by Kohler® and sink by Kohler/ Sterling® in laundry room
- Finishes by Kohler® in all bathrooms
- Built in smart home technology
- Energy efficient natural gas tankless hot water heater
- Volume ceilings throughout ranging from 9' to 10'4" (per plan and room)
- Vessel sink and premium toilet by Kohler® in powder room

INSIDE YOUR KITCHEN

- 36" Subzero® refrigerator with panels by Italkraft to match cabinets
- Wolf® oven with microwave above (per plan)
- 30" Wolf® gas cooktop
- Elegant stainless-steel hood
- Large stainless-steel single bowl under-counter mount sink by Kohler®
- Professional sink faucet with pullout spout by Kohler®
- Premium quartz countertops with mitered edge in several color choices
- Full tile backsplash by Daltile in many designs and color choices
- Premium high gloss or wood veneer cabinetry with soft close hinges by Italkraft
- Premium high gloss or wood veneer cabinetry by Italkraft on kitchen island

INSIDE YOUR BATHROOMS

MASTER BATHROOM

- 12"x24" porcelain by Daltile on floor and shower walls with accent mosaic tile
- Kohler® freestanding bathtub per plan and Kohler® faucets
- Kohler® bidet and toilet
- Tall single handle faucet by Kohler®
- Vox vessel sinks by Kohler®
- Floating high gloss lacquer or wood veneer cabinetry by Italkraft in several color choices
- Premium quartz countertops with mitered edge in several color choices

SECONDARY BATHROOMS

- 12"x24" porcelain by Daltile on floor and shower walls with accent mosaic tile
- Rectangular undermount sink by Kohler®
- Single handle faucets by Kohler®
- Floating cabinetry by Italkraft in several color choices
- Premium quartz countertops with mitered edge in several color choices



TAHITI

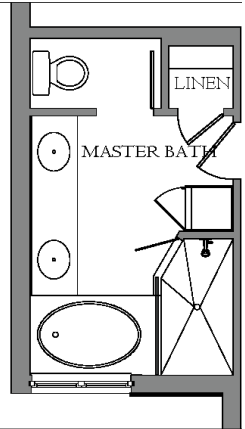
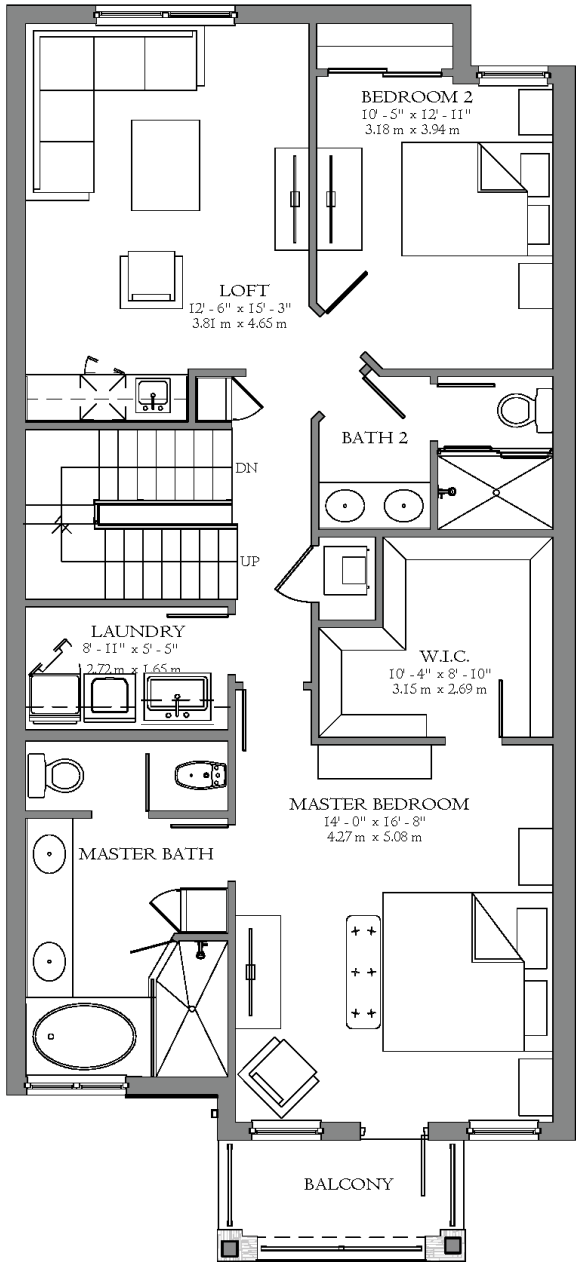
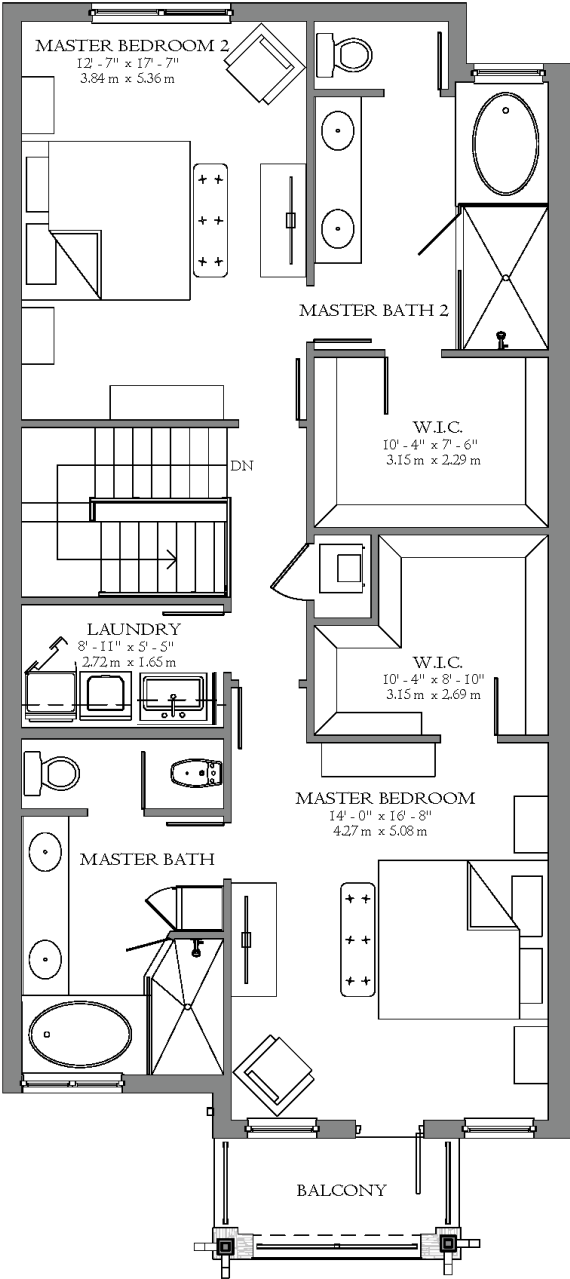
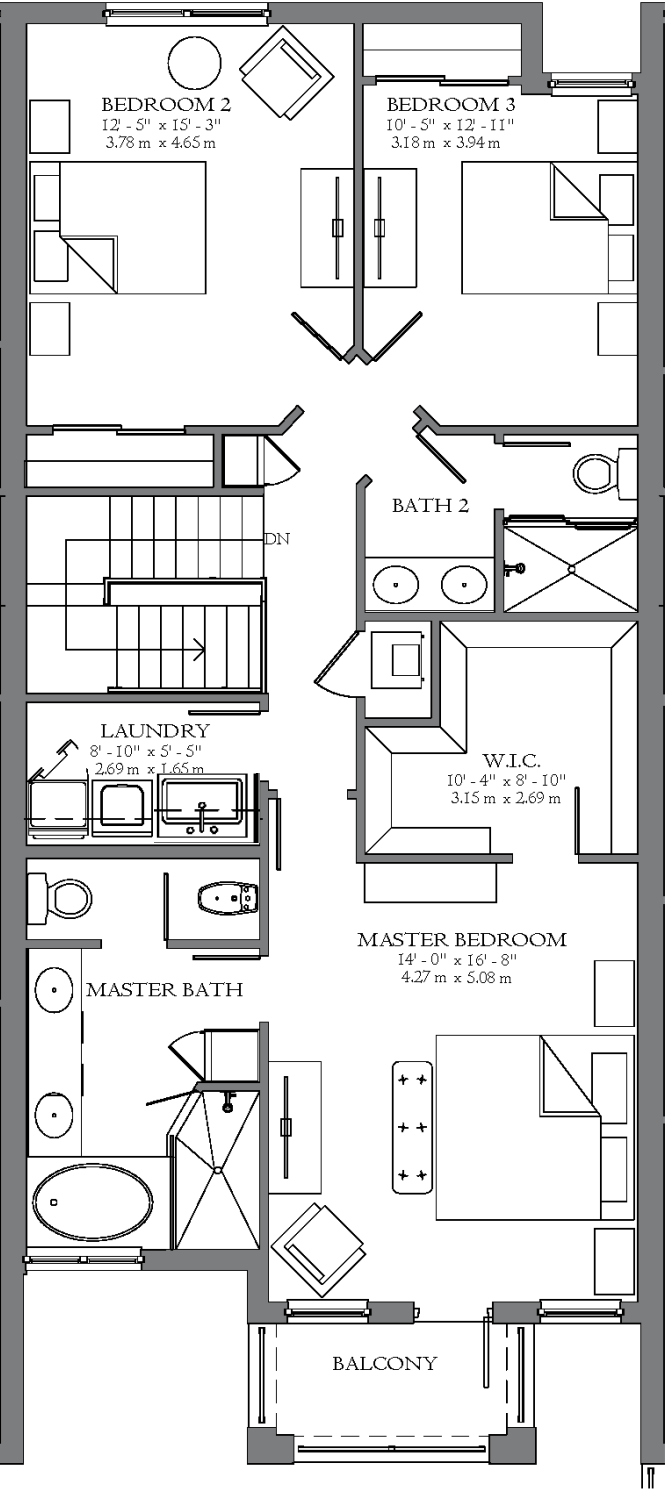
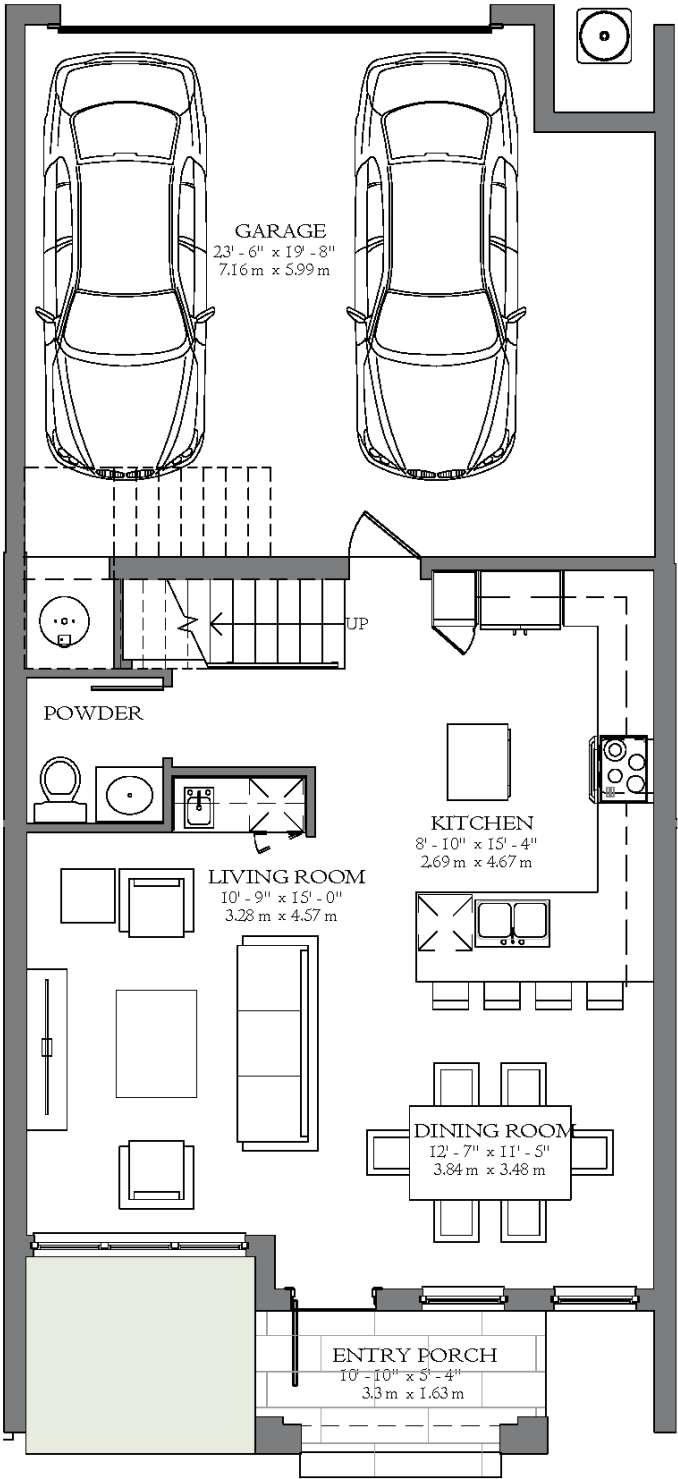
MODEL A

Two-Story
Townhome

3 bedrooms, 2.5 bathrooms,
2-car garage at rear.

1,823 AC SF » 169.36 M²
2,433 TOTAL SF » 225.99 M²

SEE ADDITIONAL OPTIONS



NO BIDET AT MASTER
BATH

OPTIONS

TAHITI

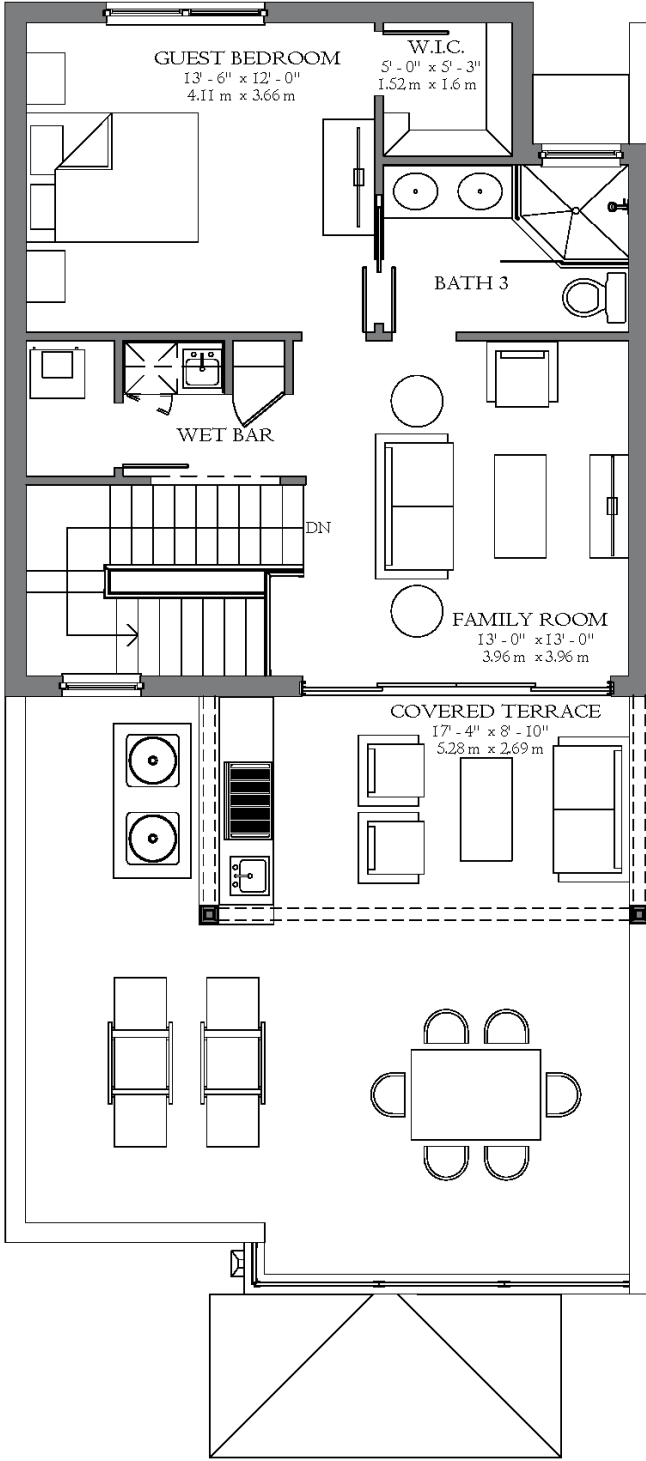
MODEL A

Three-Story
Townhome

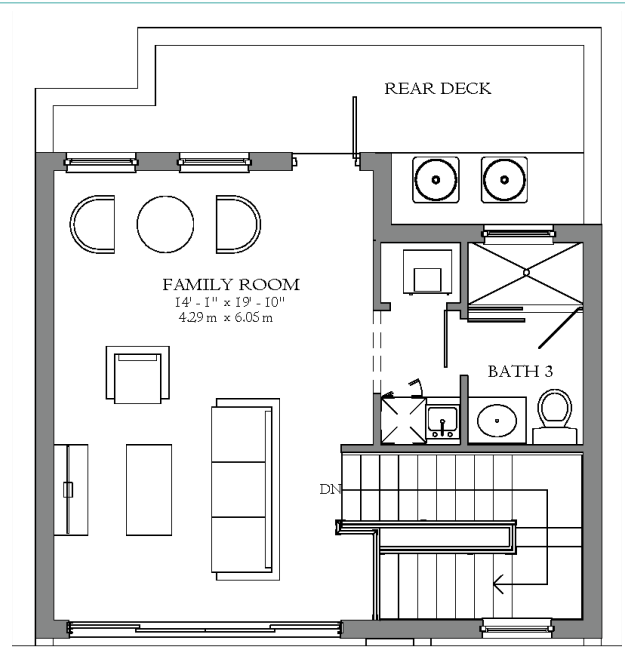
4 bedrooms, 3.5 bathrooms, roof deck,
covered terrace & summer kitchen.

2,456 AC SF » 228.20 M²
3,608 TOTAL SF » 335.19 M²

SEE ADDITIONAL OPTIONS



THIRD LEVEL
633 A/C SF » 58.84 M²



FAMILY ROOM (REVERSE FLOOR PLAN SHOWN)

THIRD LEVEL OPTION



TAHITI

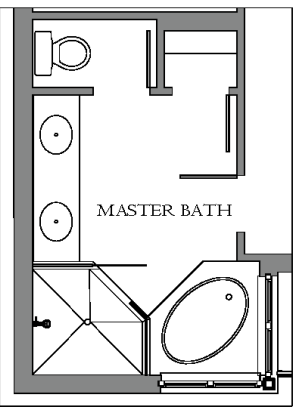
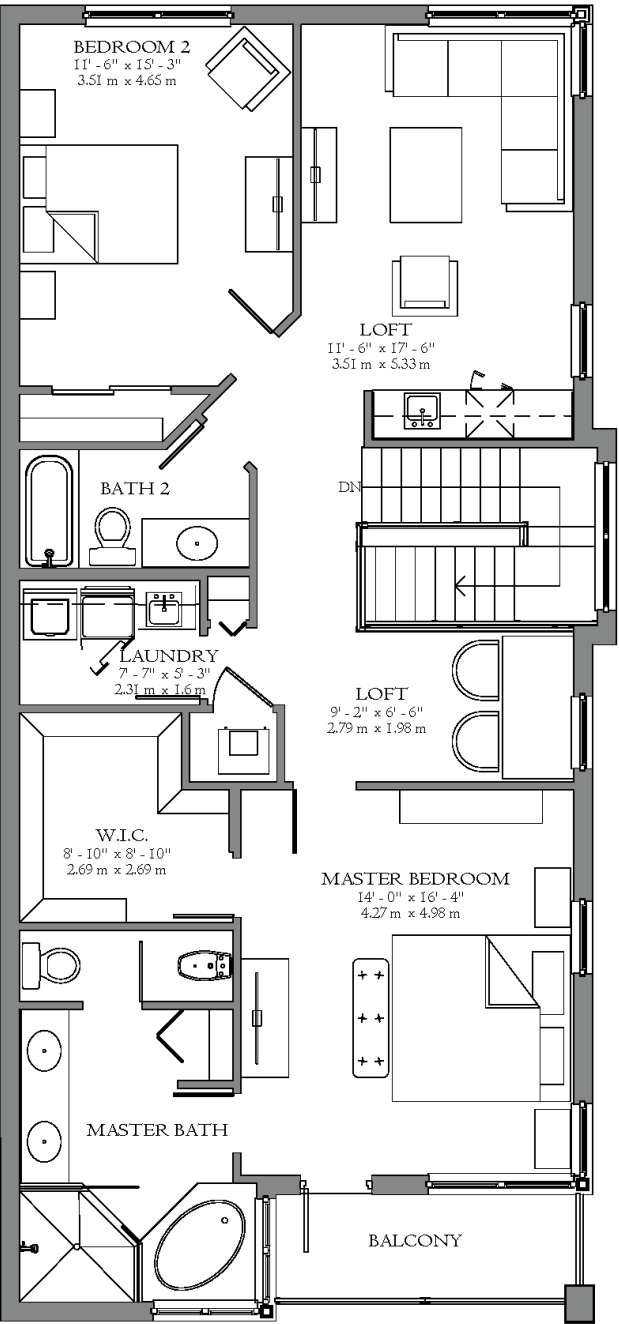
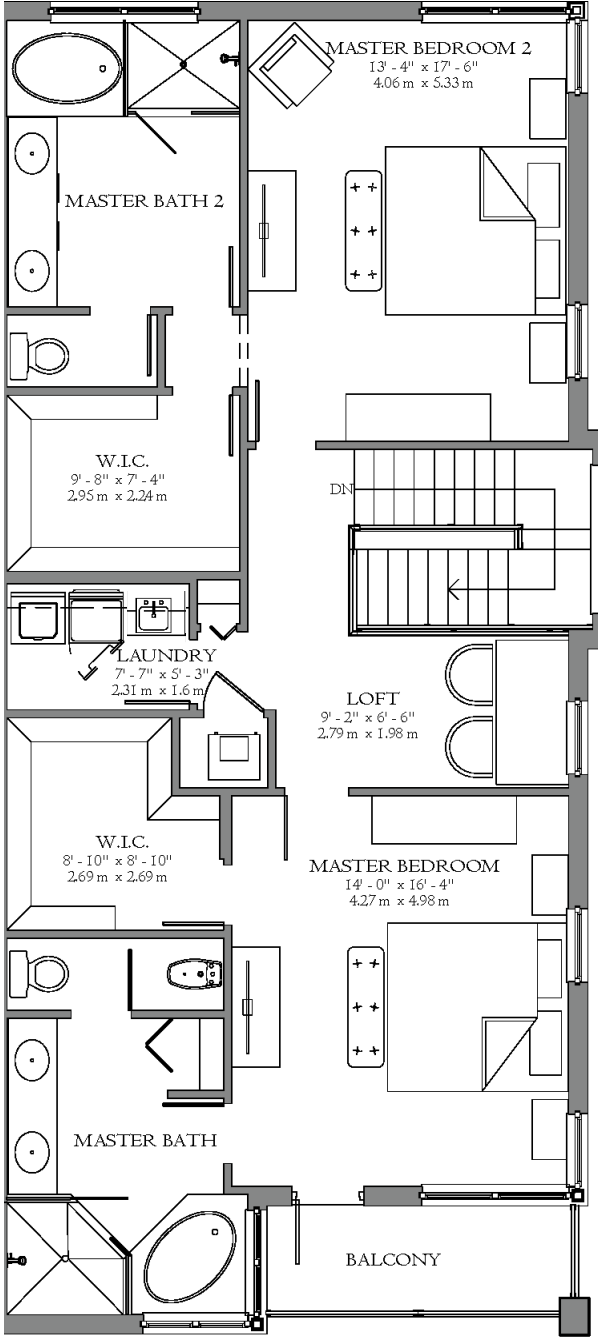
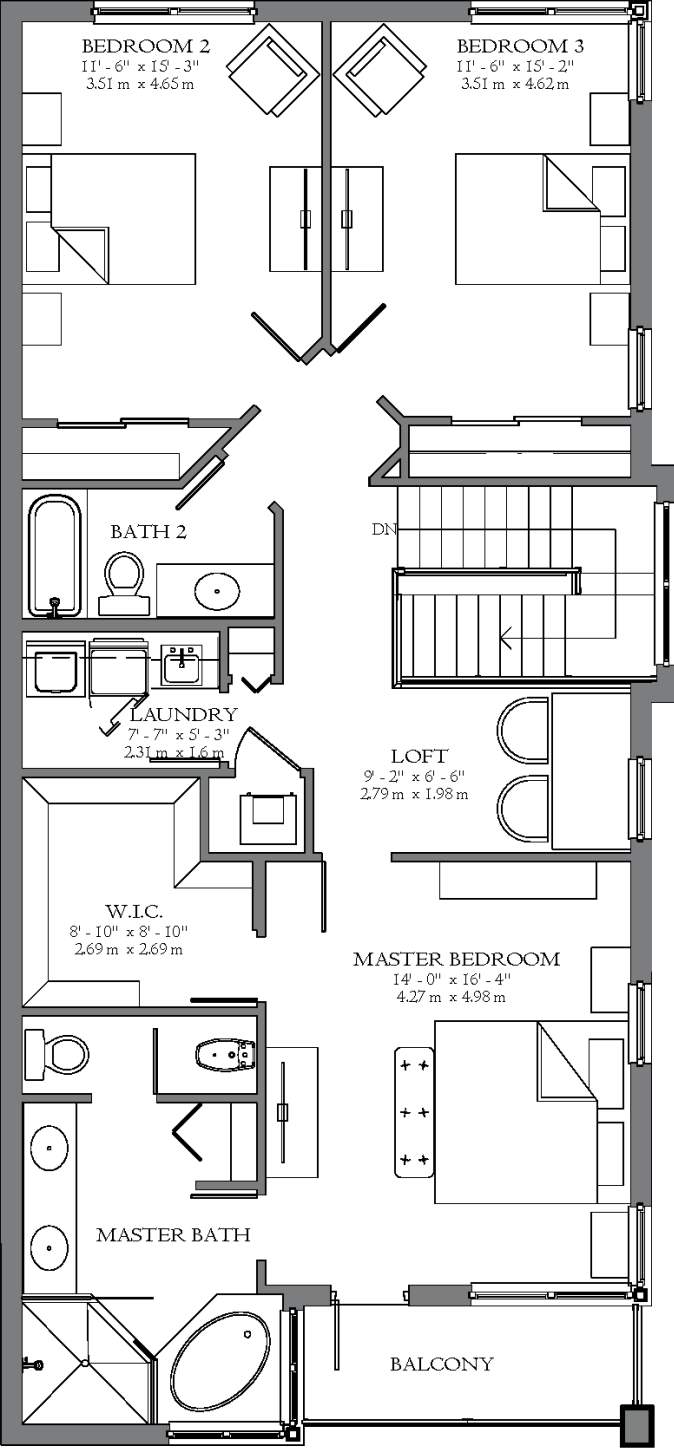
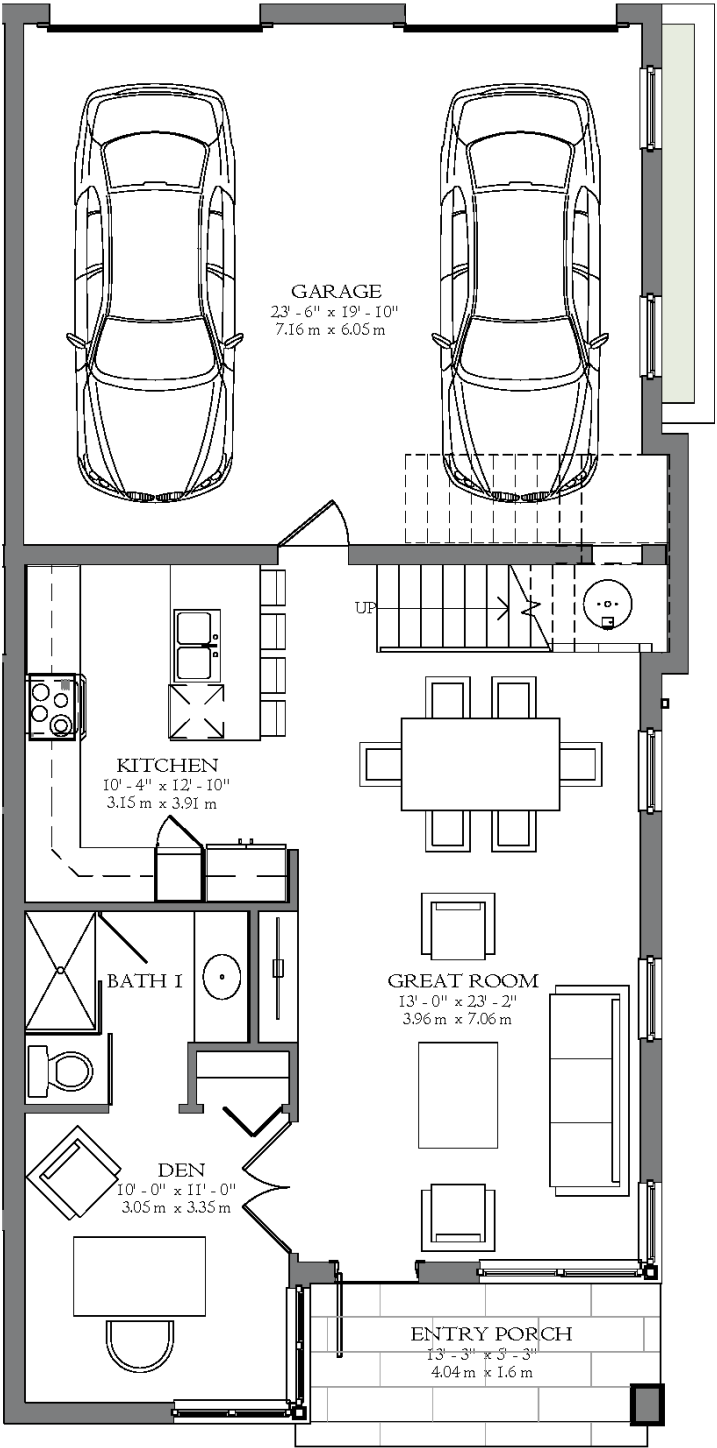
MODEL B

Two-Story
Townhome

3 bedrooms, 3 bathrooms,
2-car garage at rear.

2,012 AC SF » 186.90 M²
2,687 TOTAL SF » 249.63 M²

SEE ADDITIONAL OPTIONS



TAHITI

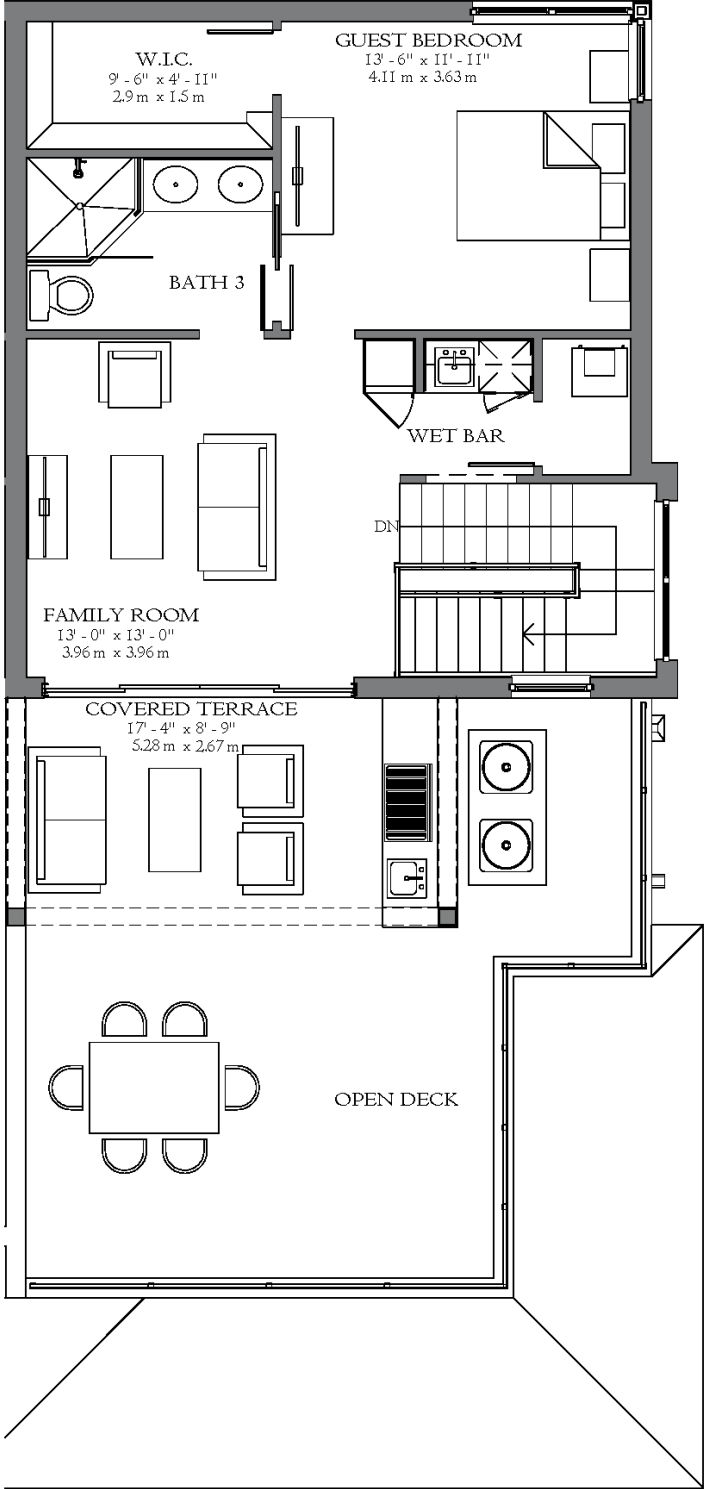
MODEL B

Three-Story
Townhome

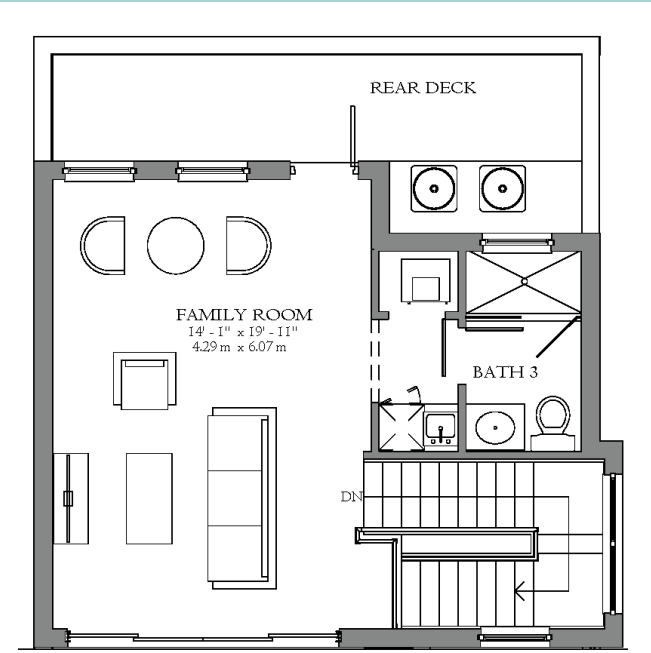
4 bedrooms, 3.5 bathrooms, roof deck,
covered terrace & summer kitchen.

2,669 AC SF » 247.98 M²
3,846 TOTAL SF » 357.35 M²

SEE ADDITIONAL OPTIONS



THIRD LEVEL
657 A/C SF » 61.08 M²



FAMILY ROOM

THIRD LEVEL OPTION



TAHITI

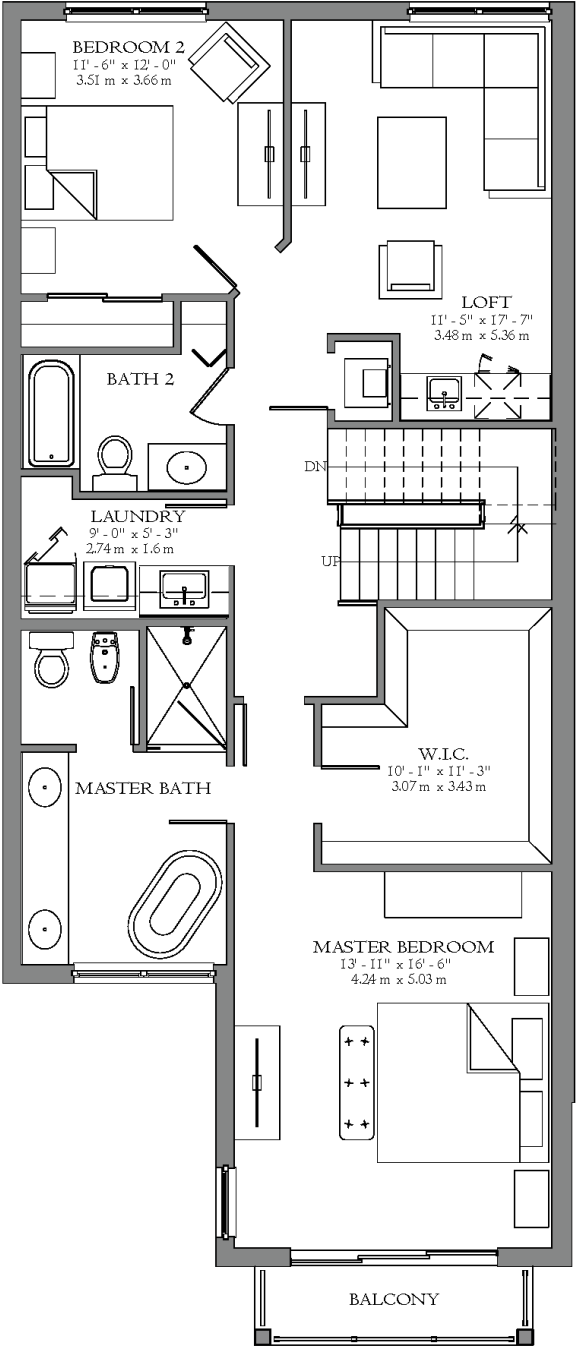
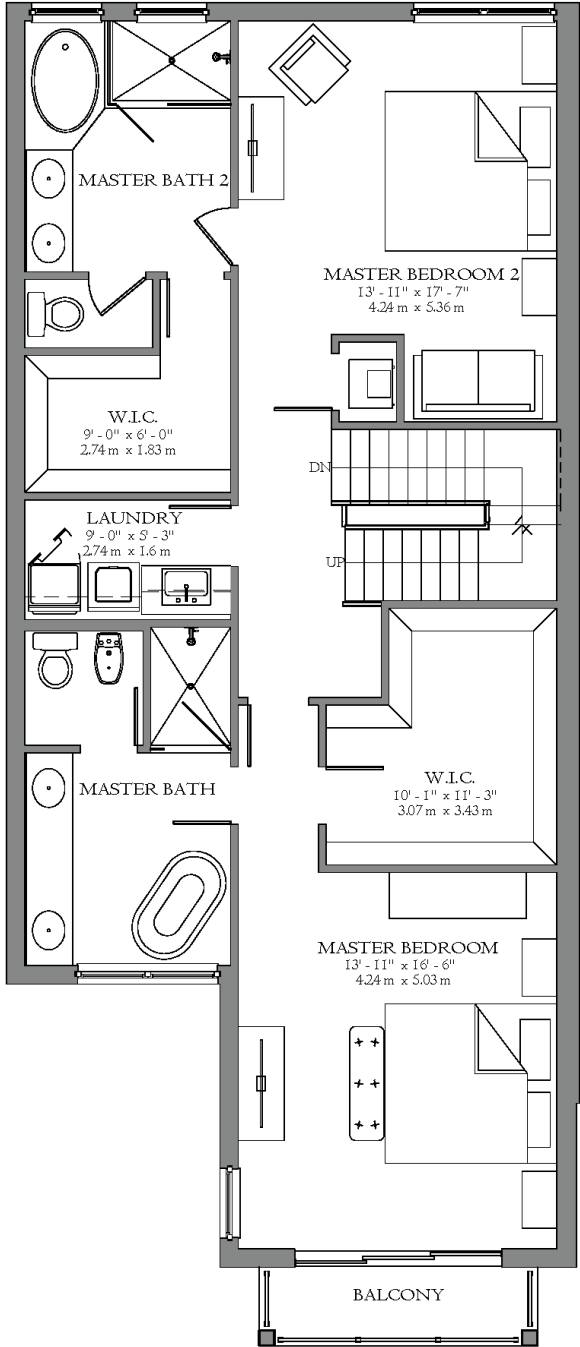
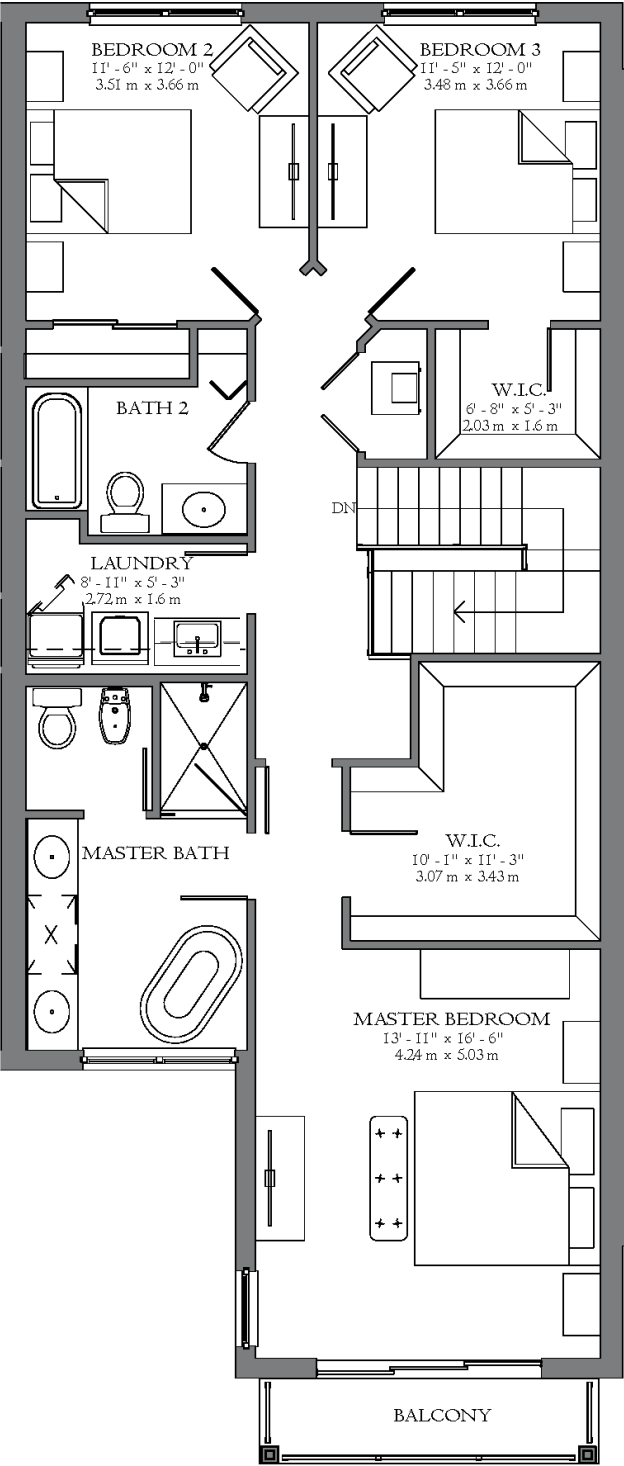
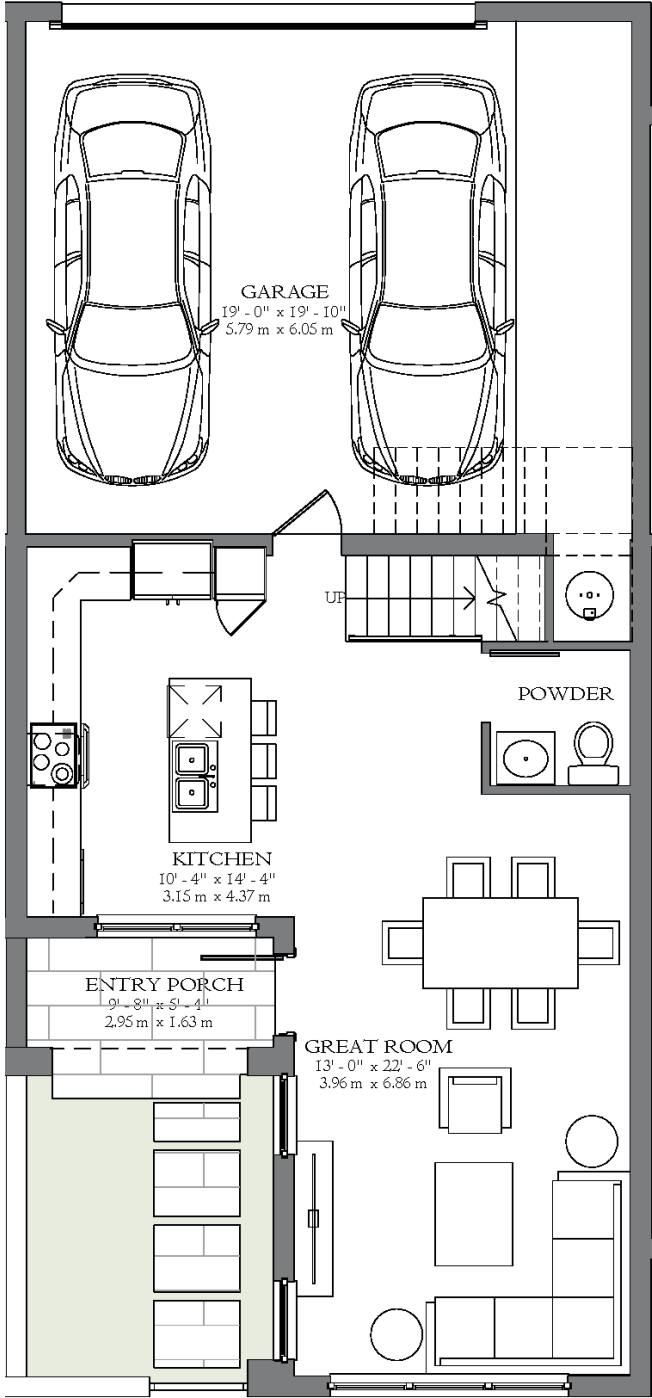
MODEL C

Two-Story
Townhome

3 bedrooms, 2.5 bathrooms,
2-car garage at rear.

1,829 AC SF » 169.91 M²
2,465 TOTAL SF » 228.97 M²

SEE ADDITIONAL OPTIONS



OPTIONS

TAHITI

MODEL C

Three-Story
Townhome

4 bedrooms, 3.5 bathrooms, roof deck,
covered terrace & summer kitchen.

2,695 AC SF » 250.34 M²
3,693 TOTAL SF » 343.12 M²

SEE ADDITIONAL OPTIONS

