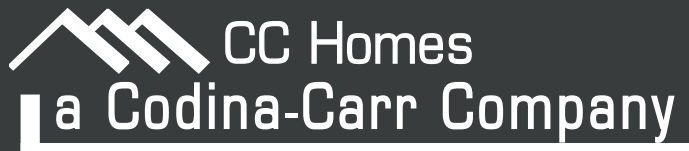


IBIZA  
COLLECTION



Downtown Doral



Artist's conception and for the convenience of reference. All dimensions are approximate. The developer reserves the right to change and alter materials, specifications, features, dimensions and designs without notice. Oral representations cannot be relied upon as correctly stating the representations of the developer. For correct representations, reference should be made to documents required by section 718.503 of the Florida Statutes furnished by the developer to the buyer or lessee. Pictures and photographs are solely for illustrative purposes and should not be relied upon when making a decision to purchase a home. Hardscape, landscape and other items shown may be decorator suggestions that are not included in the purchase price and availability may vary. Prices, features, elevations, floor plans and lot details are subject to change without notice.



CANARIAS  
AT DOWNTOWN DORAL

## INSIDE YOUR HOME

- 20"x20" porcelain tile flooring by Daltile in all main living areas and bedrooms
- Premium wood flooring on staircases in several color choices
- Statement staircase with stainless steel hand rail and stringers
- LED recessed square lighting throughout home
- Modern style 8' wood interior doors
- Square lever door hardware by Baldwin®
- Modern wood door casings and baseboards
- Washer and dryer, granite countertop and Italkraft cabinetry in laundry room
- Finishes by Kohler® in all bathrooms
- Built in smart home technology
- Energy efficient natural gas tankless hot water heater
- Volume ceilings throughout ranging from 9'4" to 11' (per plan and room)
- Vessel sink and premium toilet by Kohler® in powder room

## INSIDE YOUR KITCHEN

- 36" built-in Jennair refrigerator with panels by Italkraft to match cabinets
- Jennair stacked oven with microwave (per plan)
- 30" Jennair gas cooktop
- Elegant stainless-steel hood
- Premium Jennair dishwasher with panels by Italkraft to match cabinets
- Large stainless-steel single bowl under-counter mount sink by Kohler/Sterling®
- Distinctive sink faucet with pullout spout by Kohler®
- Premium granite countertops with 4" backsplash in several color choices
- Premium high gloss, matte or wood veneer cabinetry with soft close hinges by Italkraft

## INSIDE YOUR BATHROOMS

### MASTER BATHROOM

- 20"x20" porcelain by Daltile on floor
- 13"x13" porcelain by Daltile on shower walls
- Kohler® freestanding bathtub per plan
- Kohler® bidet and toilet (per plan)
- Tall single handle faucets by Kohler®
- Vox vessel sinks by Kohler®
- Floating high gloss, matte or wood veneer cabinetry by Italkraft in several color choices
- Premium marble vanity tops with matching 4" backsplash

### SECONDARY BATHROOMS

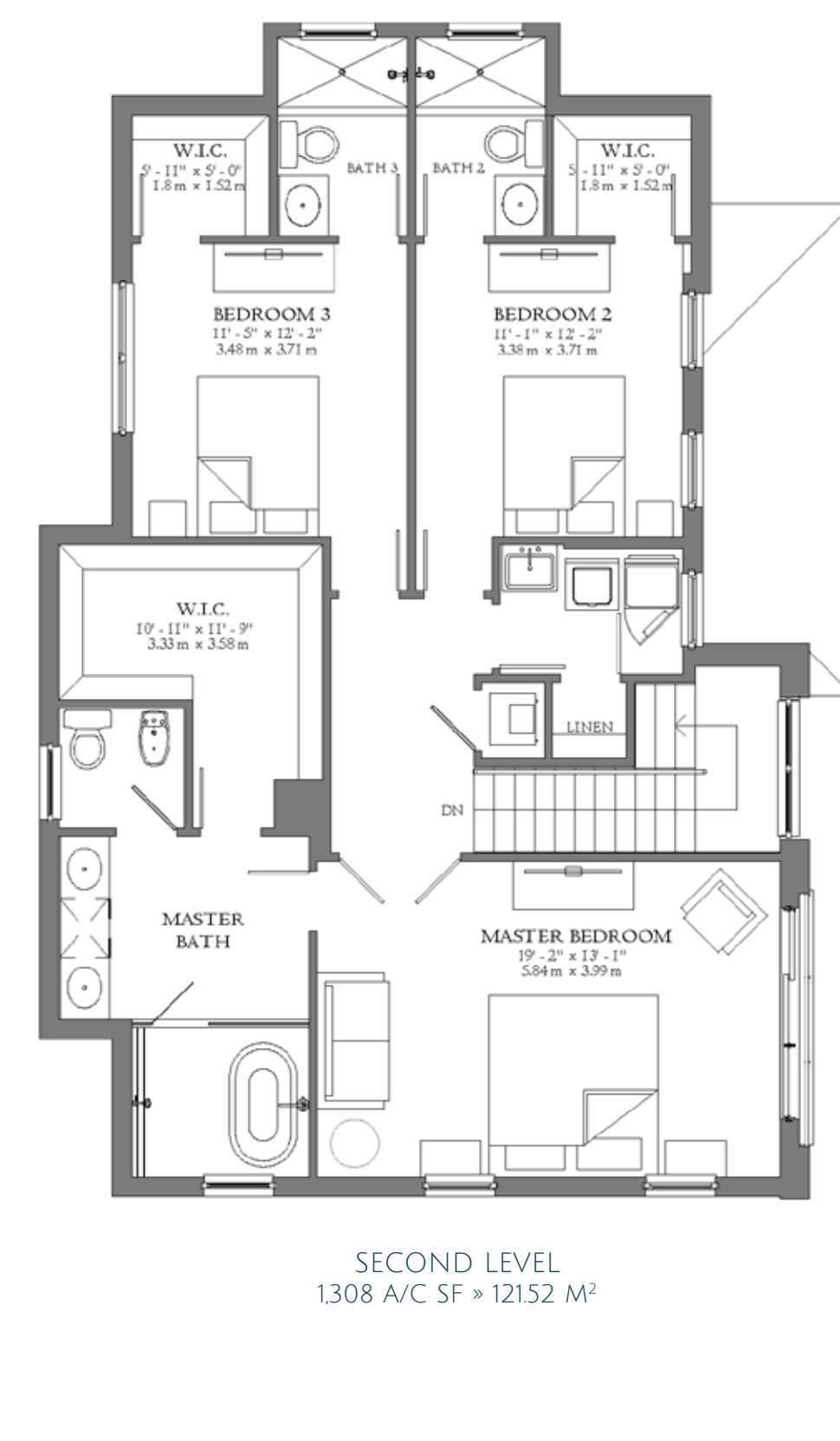
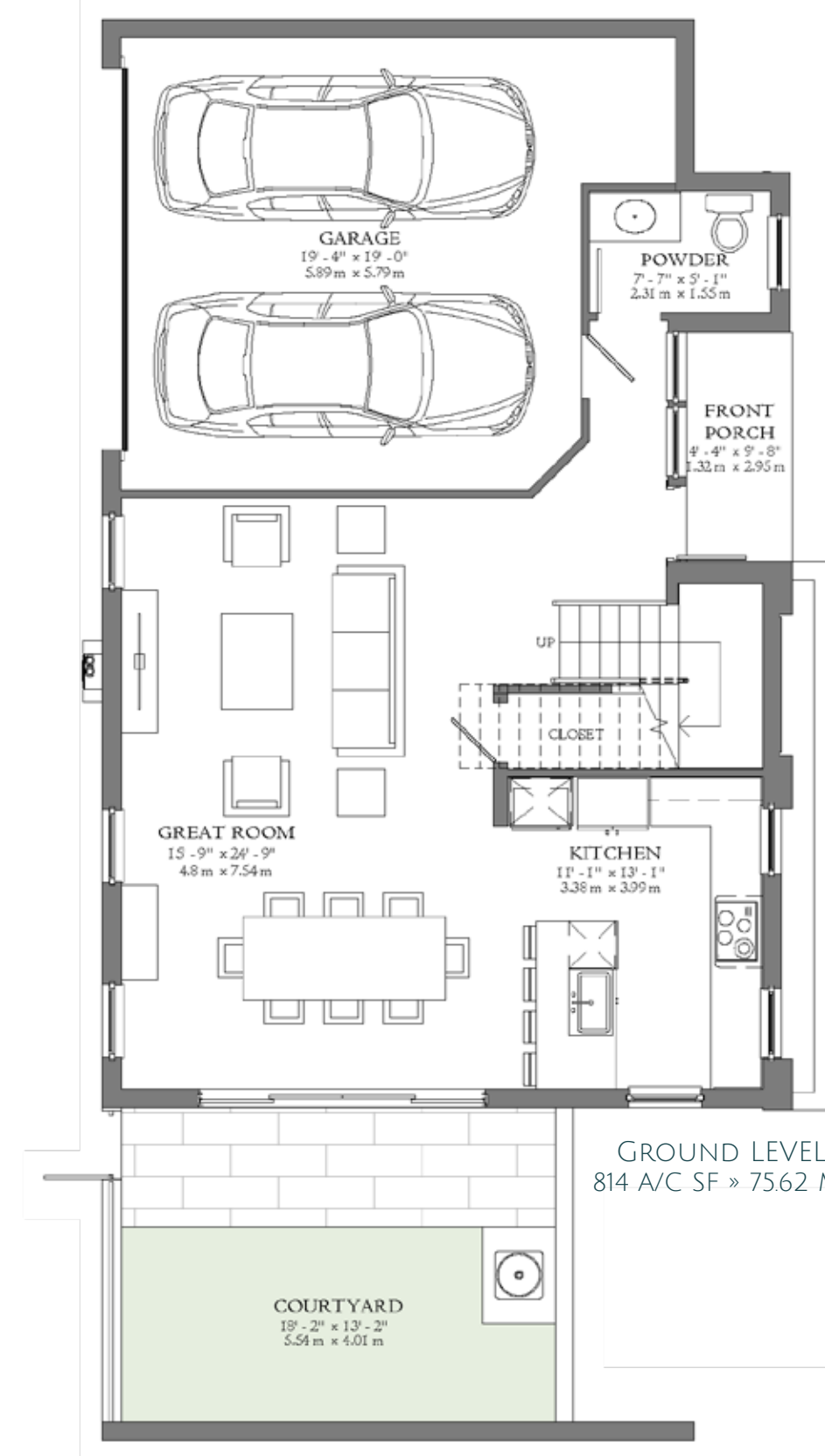
- 20"x20" porcelain by Daltile on floor
- 13"x13" porcelain by Daltile on shower walls
- Undermount sinks by Kohler/Sterling®
- Single handle faucets by Kohler®
- Floating cabinetry by Italkraft in several color choices
- Premium marble countertops with matching 4" backsplash







IBIZA C | COASTAL CONTEMPORARY



# IBIZA

## MODEL C

Two-Story  
Single-Family Home  
3 bedrooms, 3.5 bathrooms,  
courtyard and 2-car garage

2,122 AC SF » 197.14 M<sup>2</sup>  
2,862 TOTAL SF » 265.89 M<sup>2</sup>





IBIZA C | SANTA BARBARA



IBIZA C | CONTEMPORARY



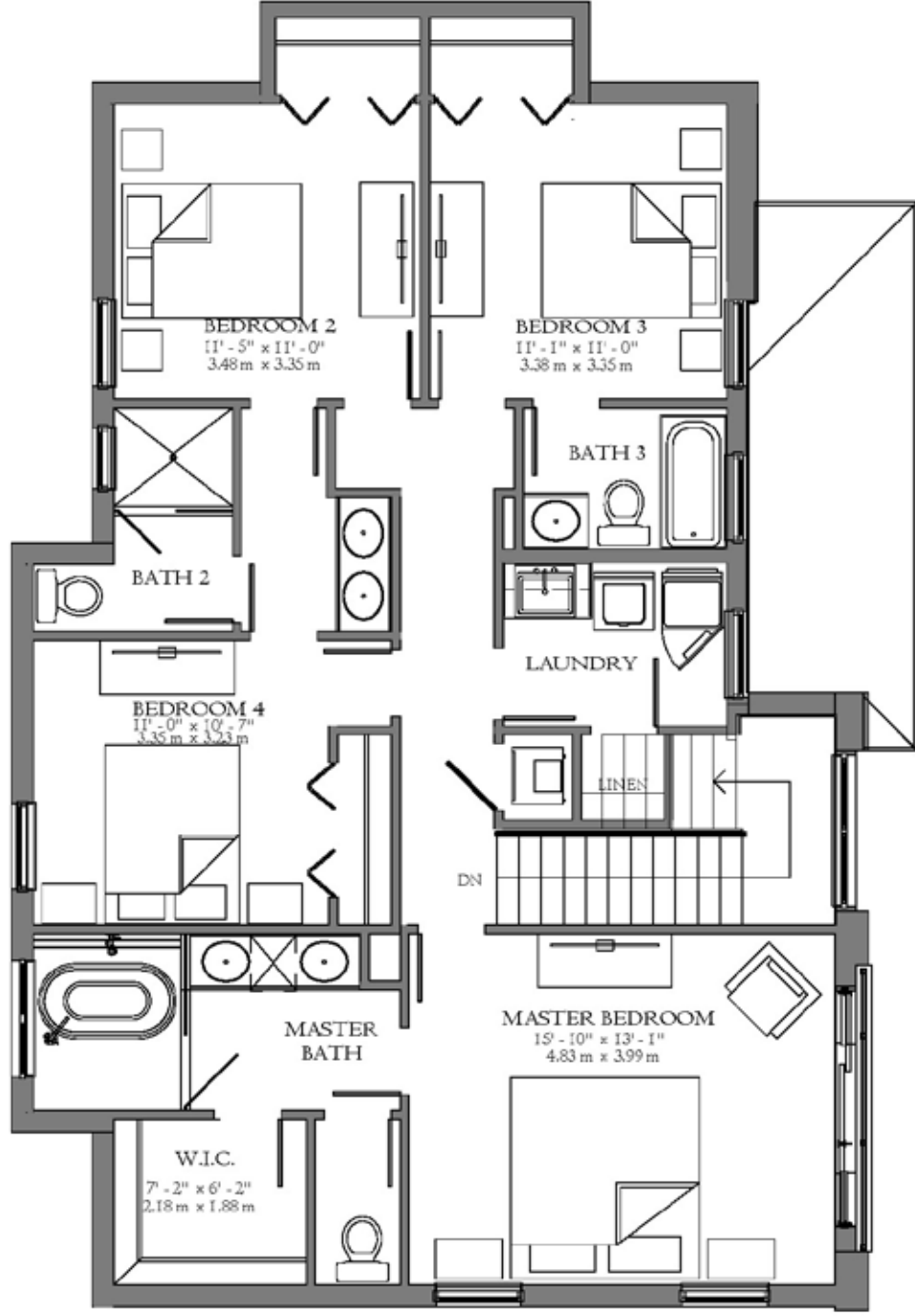
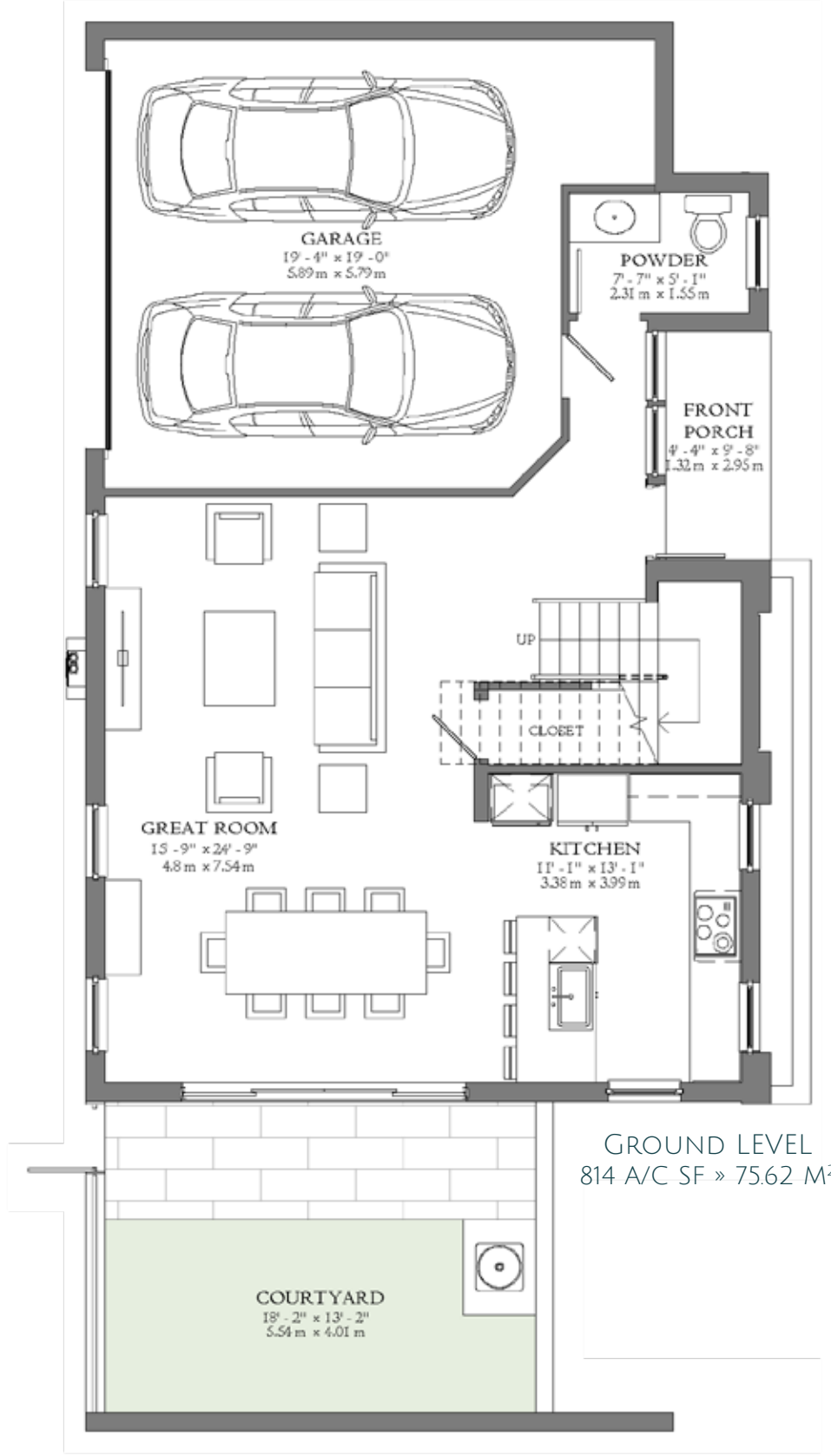
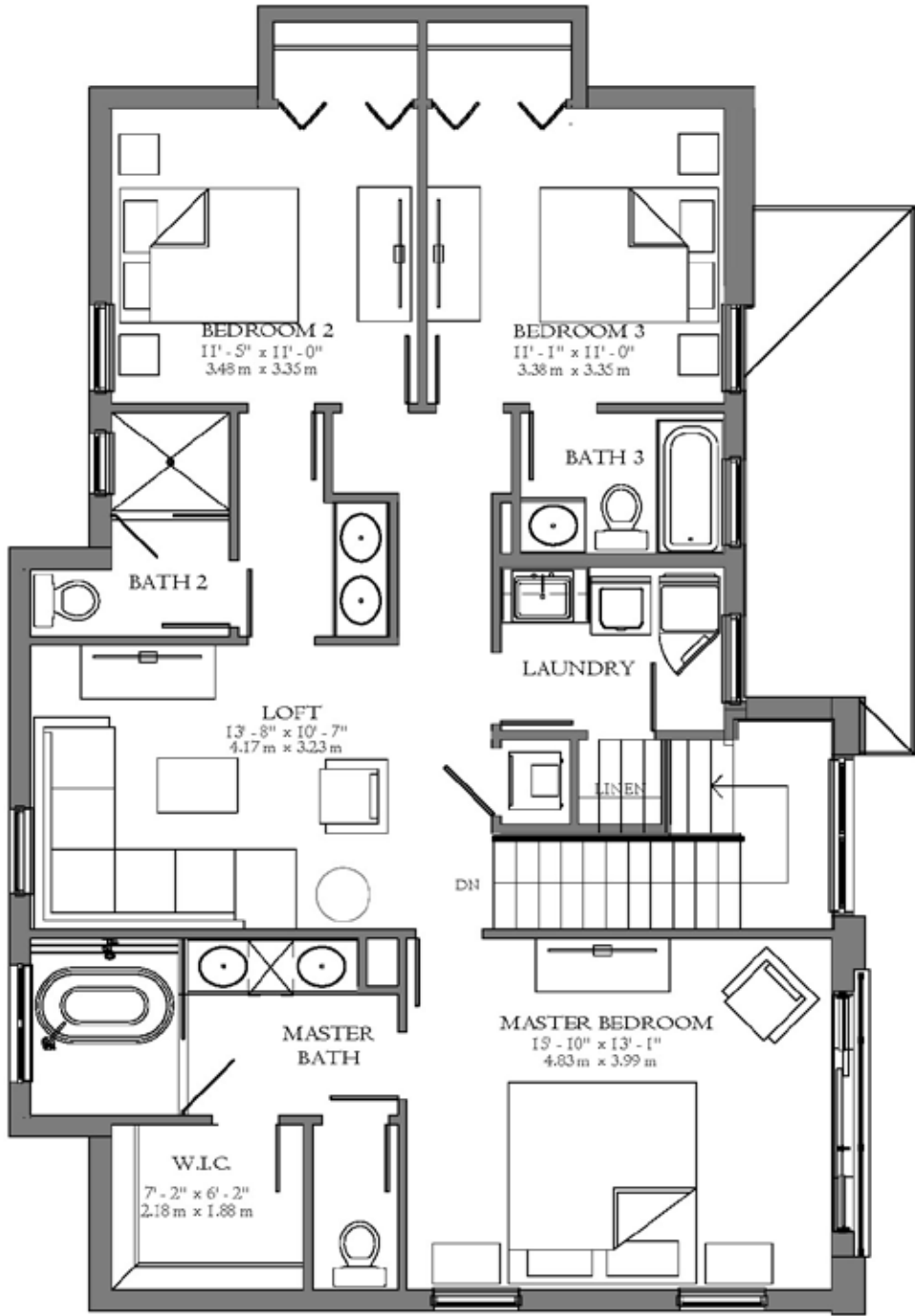
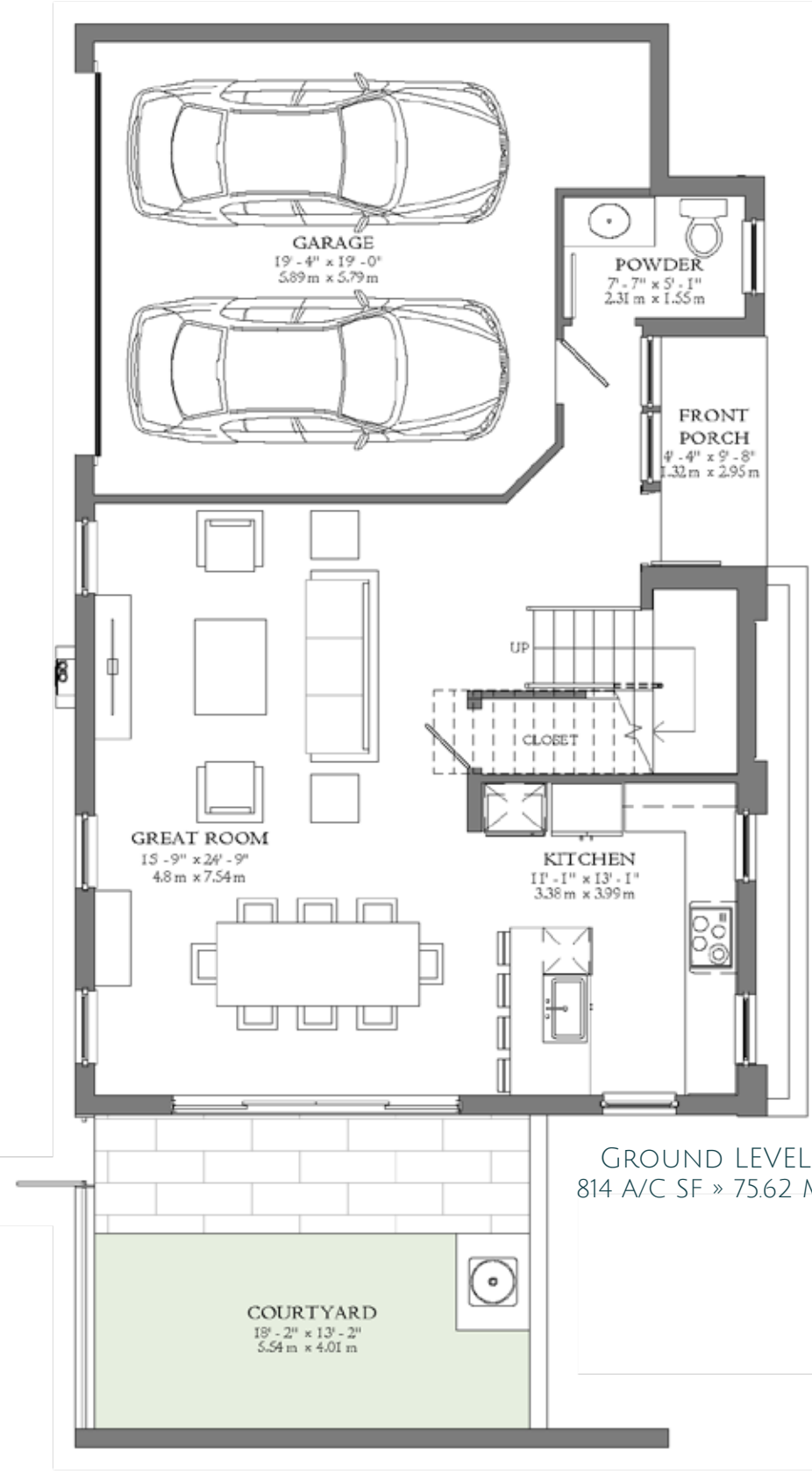


# IBIZA

## MODEL C

Two-Story  
Single-Family Home

LOFT OPTION



# IBIZA

## MODEL C

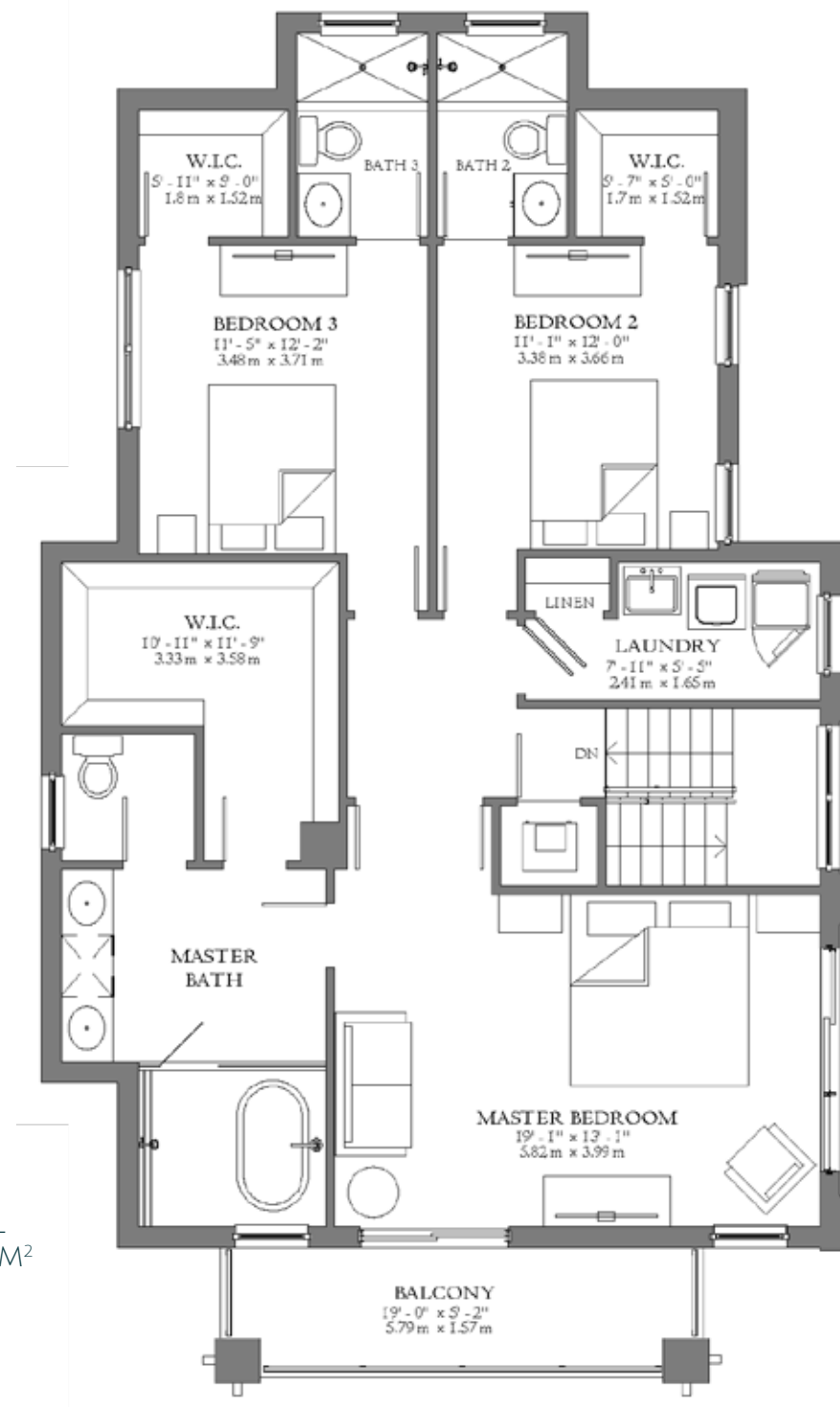
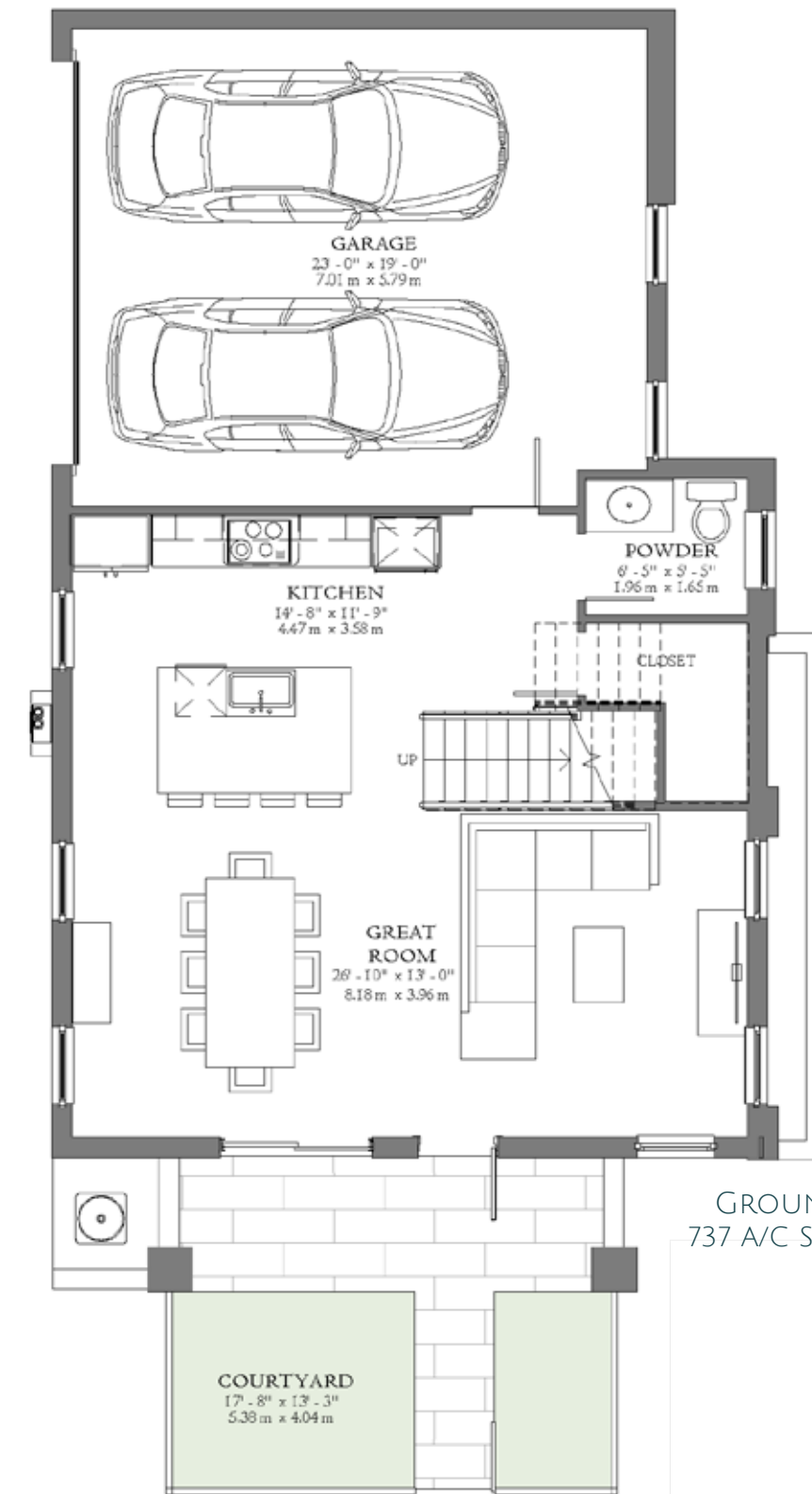
Two-Story  
Single-Family Home

4 BEDROOMS OPTION





IBIZA D | COASTAL CONTEMPORARY ON CORNER HOME SITE



# IBIZA

## MODEL D

Two-Story  
Single-Family Home  
3 bedrooms, 3.5 bathrooms,  
courtyard and 2-car garage

2,057 A/C SF » 191.10 M<sup>2</sup>  
2,904 TOTAL SF » 269.32 M<sup>2</sup>