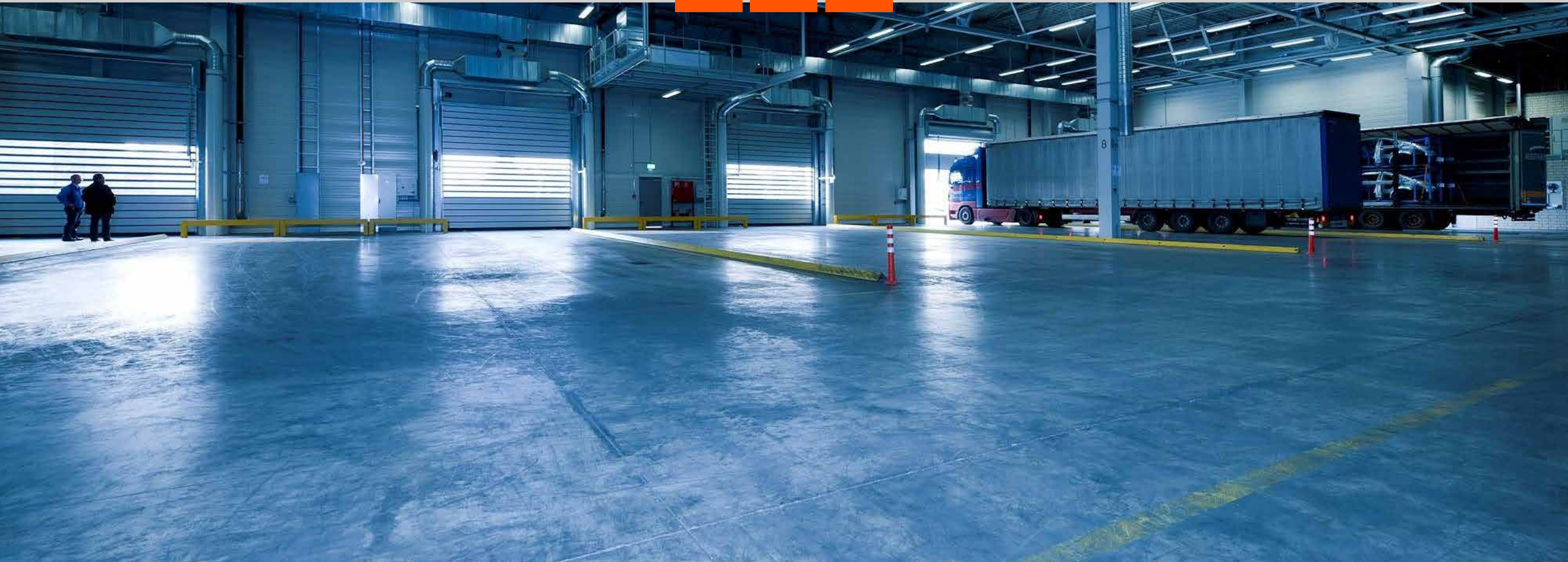


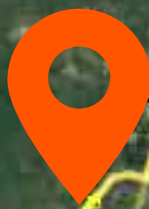
KINCHIL PARK

KINCHIL PARK

9 LOTES A PIE DE CARRETERA DESTINADOS AL SECTOR INDUSTRIA.
FABRICAS, BODEGAS, GRANJAS, ETC.



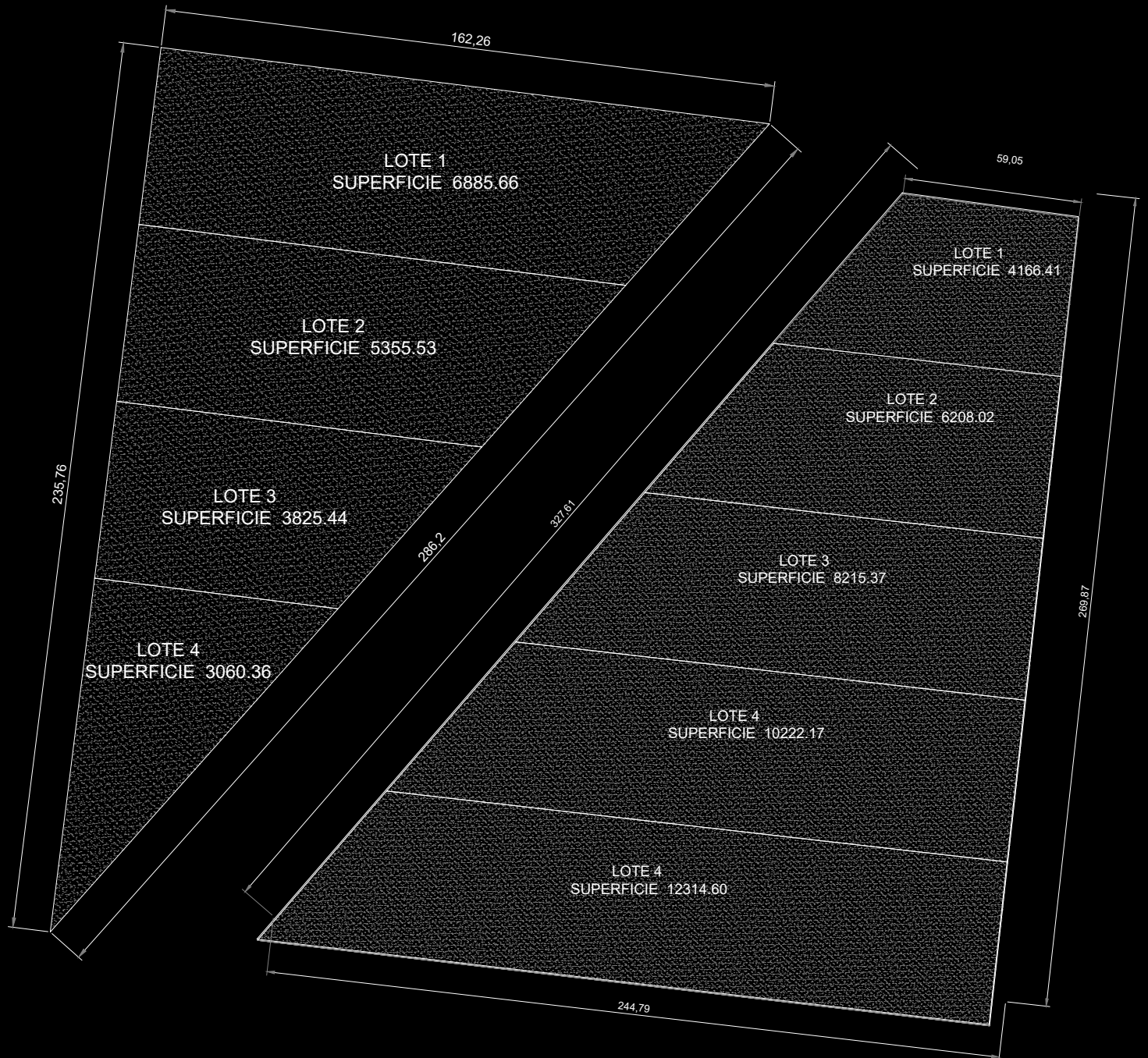
KINCHIL PARK



UBICACION

UBICADOS A UN COSTADO DEL PUEBLO DE KINCHIL Y TETIZ.
A PIE DE LA CARRETERA MÉRIDA - CELESTÚN.

MASTER PLAN MASTER PLAN



A photograph of an industrial facility, likely a refinery or chemical plant, with a complex network of pipes, towers, and storage tanks. The scene is dimly lit, suggesting dusk or dawn. In the foreground, there are railway tracks with gravel. A large text overlay is centered in the image. The word 'KINCHIL' is in white, and 'PARK' is in orange. The background shows a tall distillation column on the left, several large cylindrical storage tanks in the middle, and more industrial structures on the right. A blue light pole is visible on the far right. The sky is dark and overcast.

KINCHIL PARK