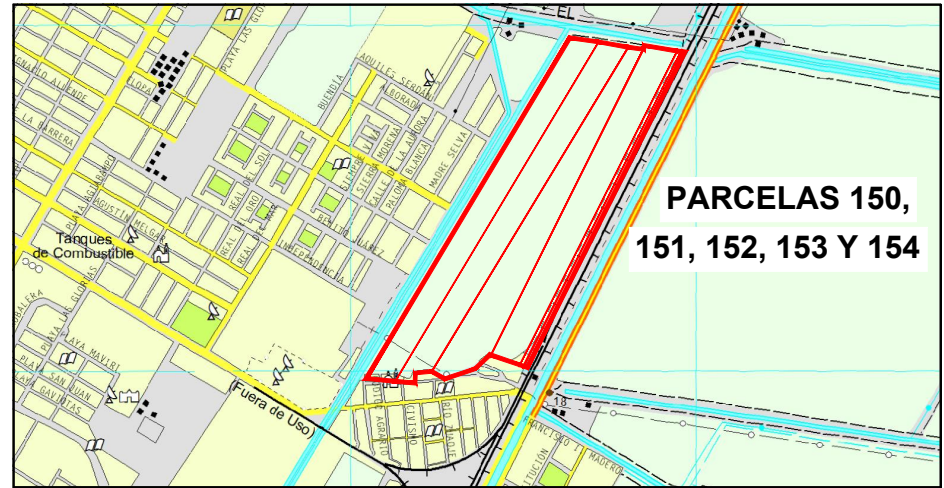
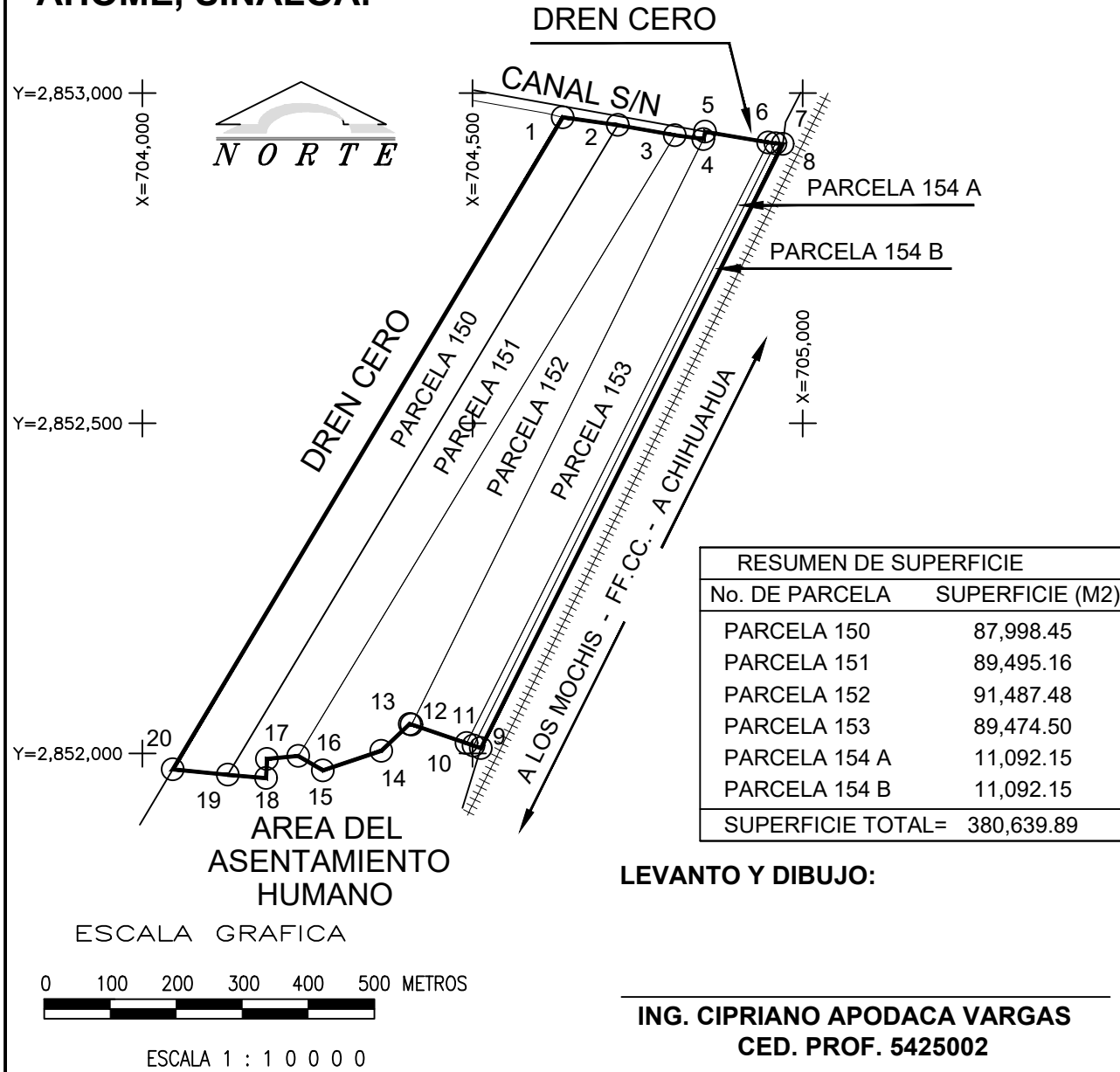


PLANO DE LAS PARCELAS 150, 151, 152, 153 Y 154 UBICADOS EN EL EJIDO JIQUILPAN, MUNICIPIO DE AHOME, SINALOA.



CARTA TOPOGRAFICA G12D17 d REFERENCIA: INEGI

CUADRO DE CONSTRUCCION

LADO		RUMBO	DISTANCIA	V	COORDENADAS UTM	
EST	PV				Y	X
1	2	S 81°56'40" E	84.10	1	2,852,963.5020	704,636.5400
2	3	S 79°58'04" E	87.85	2	2,852,951.7169	704,719.8102
3	4	S 82°02'01" E	43.69	3	2,852,936.4140	704,806.3130
4	5	N 13°10'19" E	11.51	4	2,852,930.3590	704,849.5800
5	6	S 80°23'04" E	96.89	5	2,852,941.5670	704,852.2030
6	7	S 83°36'35" E	11.30	6	2,852,925.3830	704,947.7310
7	8	S 83°36'35" E	10.81	7	2,852,924.1253	704,958.9608
8	9	S 26°32'57" W	1,022.59	8	2,852,922.9220	704,969.7050
9	10	N 70°57'33" W	11.67	9	2,852,008.1640	704,512.6450
10	11	N 70°57'33" W	11.27	10	2,852,011.9719	704,501.6117
11	12	N 71°13'50" W	87.90	11	2,852,015.6470	704,490.9630
12	13	N 72°49'02" W	3.00	12	2,852,043.9300	704,407.7370
13	14	S 46°42'39" W	59.28	13	2,852,044.8150	704,404.8750
14	15	S 71°22'41" W	93.24	14	2,852,004.1660	704,361.7230
15	16	N 59°30'13" W	43.43	15	2,851,974.3910	704,273.3600
16	17	S 84°22'07" W	47.47	16	2,851,996.4300	704,235.9400
17	18	S 02°59'07" W	29.09	17	2,851,991.7720	704,188.7000
18	19	N 84°57'00" W	58.19	18	2,851,962.7210	704,187.1850
19	20	N 84°17'08" W	83.66	19	2,851,967.8430	704,129.2220
20	1	N 30°53'07" E	1,150.47	20	2,851,976.1730	704,045.9780

SUPERFICIE = 380,639.89 m2