

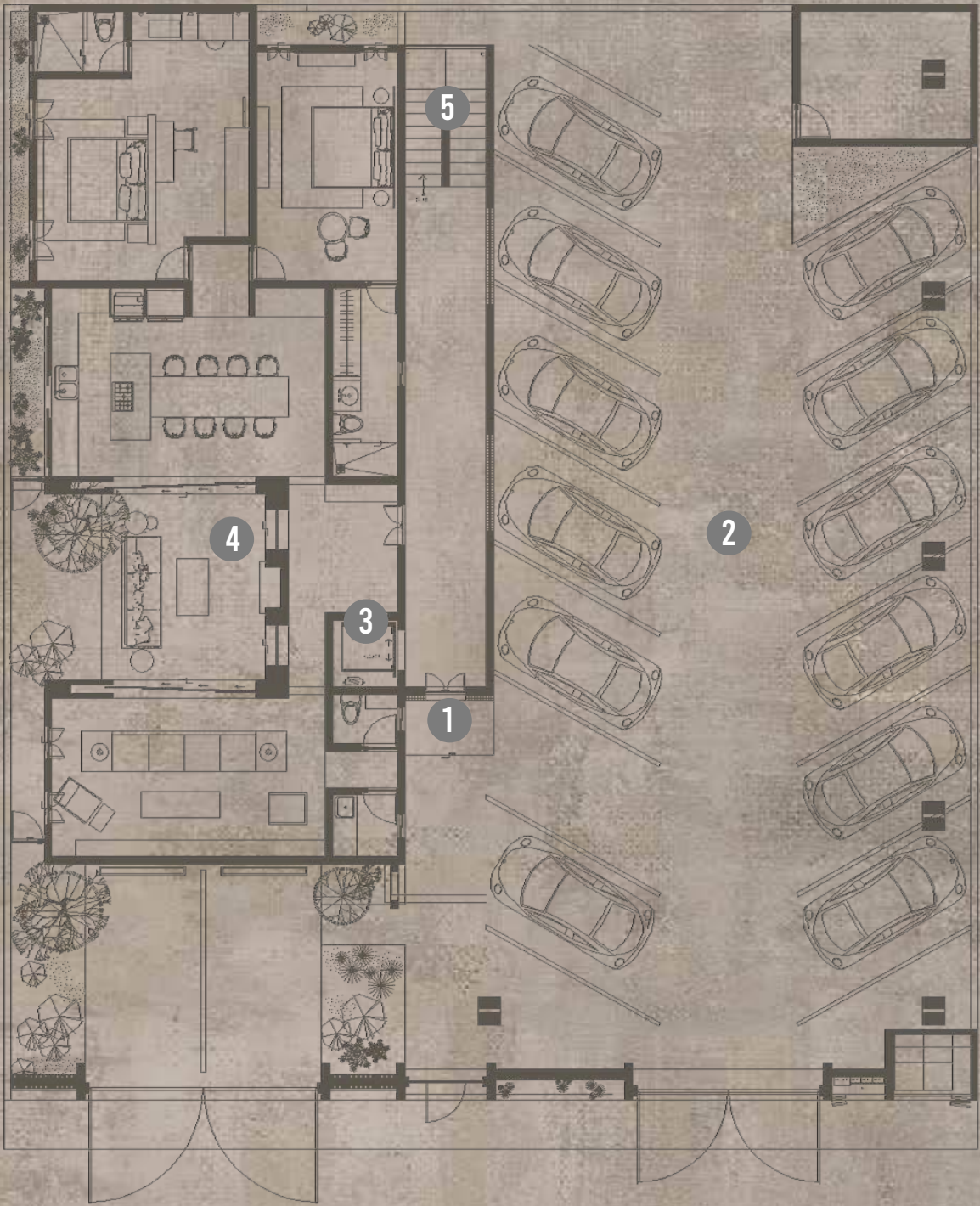
DOS PIEDRAS
LIVING

LOS CABOS, MÉXICO

2025

THE PROJECT

LEVEL 1



MAIN FLOOR

- 1. MAIN ENTRANCE
- 2. PRIVATE PARKING
- 3. ELEVATOR
- 4. RESIDENCE 1
- 5. EMERGENCY STAIRS

LEVEL 2



SECOND FLOOR

- 1. MAIN HALL
- 2. APARTMENTS (3 UNITS)
- 3. ELEVATOR
- 4. RESIDENCE 2
- 5. EMERGENCY STAIRS

LEVEL 3



THIRD FLOOR

- 1. MAIN HALL
- 2. APARTMENTS (3 UNITS)
- 3. ELEVATOR
- 4. PENTHOUSE
- 5. EMERGENCY STAIRS

LEVEL 4



FOURTH FLOOR

- 1. RESIDENCE 1, RESIDENCE 2 & APARTMENTS COMMON TERRACE
- 2. PENTHOUSE PRIVATE TERRACE
- 3. ELEVATOR
- 4. EMERGENCY STAIRS



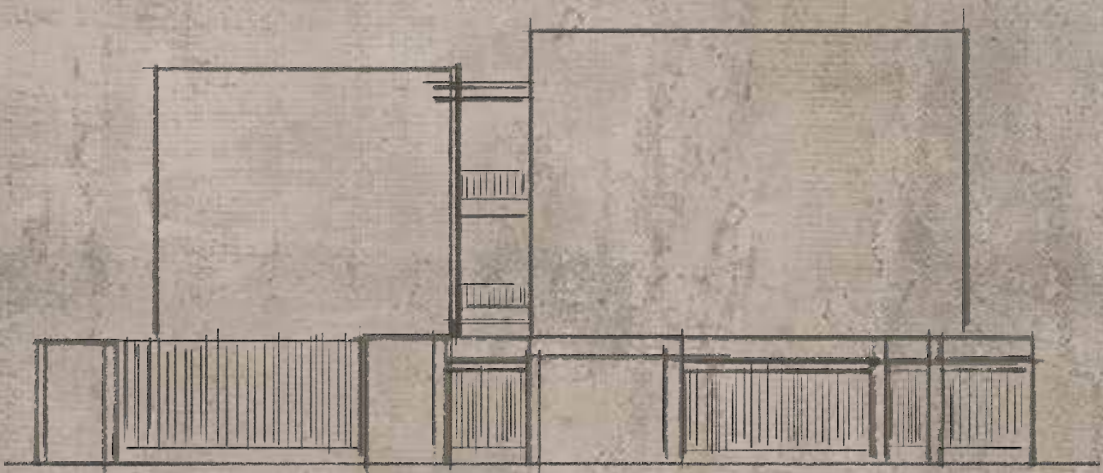
DOS PIEDRAS

LIVING

It arises from the collaboration between the developer and architects specialized in crafting livable spaces, merging ideas to evoke unique sensations and prioritize fundamental functionality.

Inspired by the unique biodiversity of Los Cabos, this project stems from explorations where the desert and endemic life left a profound mark. The design team, passionate about connecting with the environment, brought to life a refuge that captures the essence of Los Cabos.

DOS PIEDRAS Living, is not just a project; it's a narrative of nature, where each architectural element tells the story of visionaries seeking to build a space where architecture and biodiversity merge in perfect harmony.



LOCATION

22°54'29.6"N 109°53'18.6"W





Each space is meticulously designed to provide everything necessary for a dignified and comfortable life, merging modern functionality with the charm of the Los Cabos location. Offering flexible options for those seeking comfort without compromising their lifestyle, ensuring a homely atmosphere.

The rooftop has been conceived as the perfect gathering point, providing areas to relax, socialize, and enjoy unforgettable moments. It becomes the heart of the project, where residents can indulge in an exclusive lifestyle and connect with their neighbors in a relaxed and harmonious environment.



3 RESIDENCES



**BBQ
ROOF TOP**



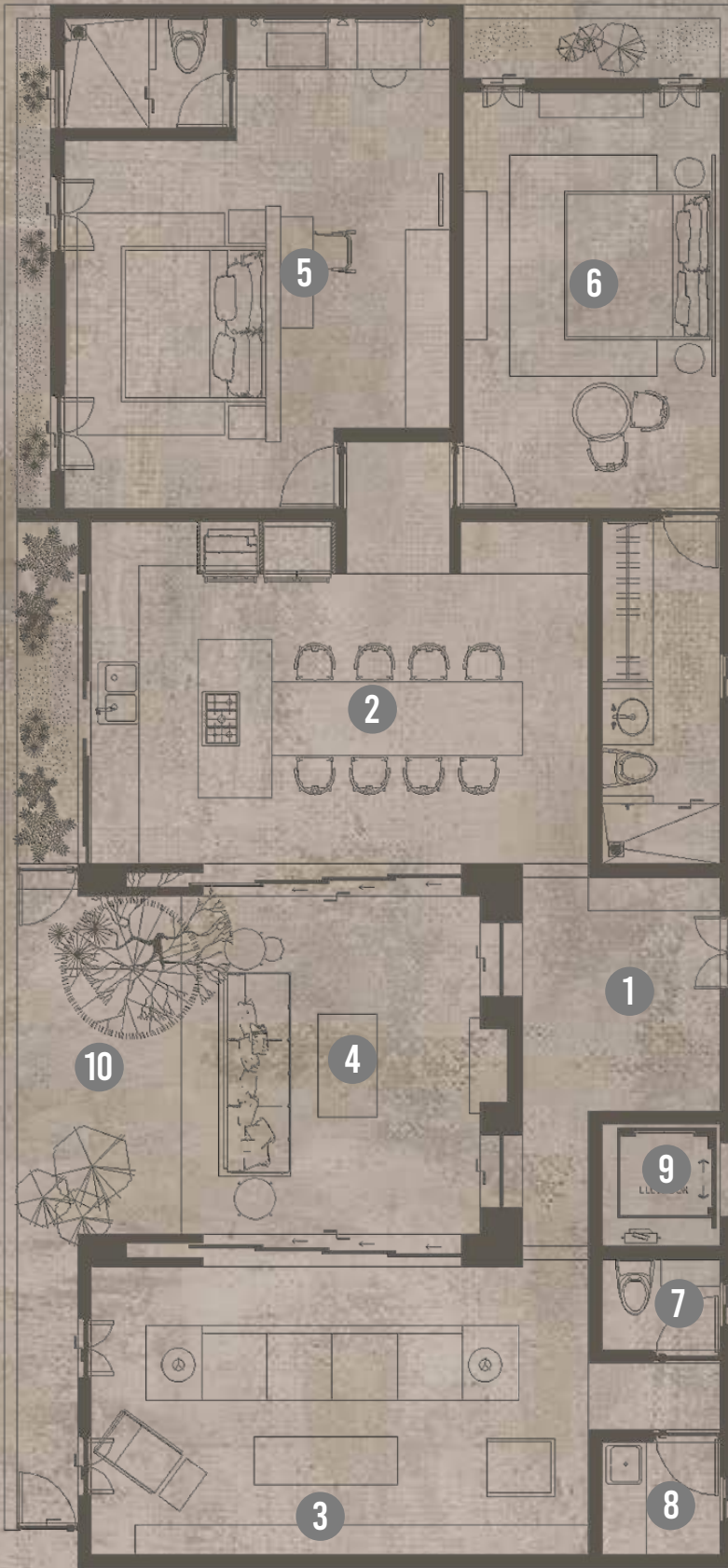
**6
APARTMENTS**



**PRIVATE
PARKING**



THE RESIDENCES



RESIDENCE 1 | MAIN LEVEL

- 1. VESTIBULE
 - 2. KITCHEN AND DINING
 - 3. LIVING ROOM
 - 4. TERRACE
 - 5. MASTER BEDROOM
 - 6. BEDROOM 2
 - 7. POWDER
 - 8. LAUNDRY
 - 9. ELEVATOR
 - 10. GARDEN
- 172 M² / 1851 SQ. FT.

RESIDENCE 1



RESIDENCE 2 | SECOND LEVEL

1. VESTIBULE
2. KITCHEN AND DINING
3. LIVING ROOM
4. TERRACE
5. MASTER BEDROOM
6. BEDROOM 2
7. POWDER
8. LAUNDRY
9. ELEVATOR

160.85 M² / 1731-SQ. FT.

RESIDENCE 2

RESIDENCES

THE RESIDENCES ARE A LUXURIOUS SPACES FEATURING HIGH CEILINGS, EXPANSIVE WINDOWS, AND MODERN AMENITIES THROUGHOUT. THE KITCHEN BOASTS STATE-OF-THE-ART APPLIANCES AND ELEGANT COUNTERTOPS, PERFECT FOR CULINARY ENTHUSIASTS. THE SPACIOUS LIVING AREA IS DESIGNED TO PROVIDE COMFORT AND RELAXATION, WHILE THE BEDROOMS OFFER SERENE RETREATS. STEP OUT ONTO THE PRIVATE TERRACE, WHERE PANORAMIC VIEWS AND UPSCALE FURNISHINGS CREATE AN IDEAL SETTING FOR OUTDOOR ENTERTAINMENT OR SIMPLY RELAXING IN STYLE. THIS PENTHOUSE OFFERS A TRULY ELEVATED LIVING EXPERIENCE.



DELUXE AREAS





SOPHISTICATED



TOP-TIER FINISHES



POLISHED



DEEPLY COMFORTABLE



VISUALLY BEAUTIFUL





PENTHOUSE | THIRD LEVEL

- 1. VESTIBULE
- 2. KITCHEN AND DINING
- 3. LIVING ROOM
- 4. MASTER BEDROOM
- 5. BEDROOM 2
- 6. BEDROOM 3
- 7. POWDER
- 8. LAUNDRY
- 9. ELEVATOR

160.85 M² / 1731-SQ. FT.

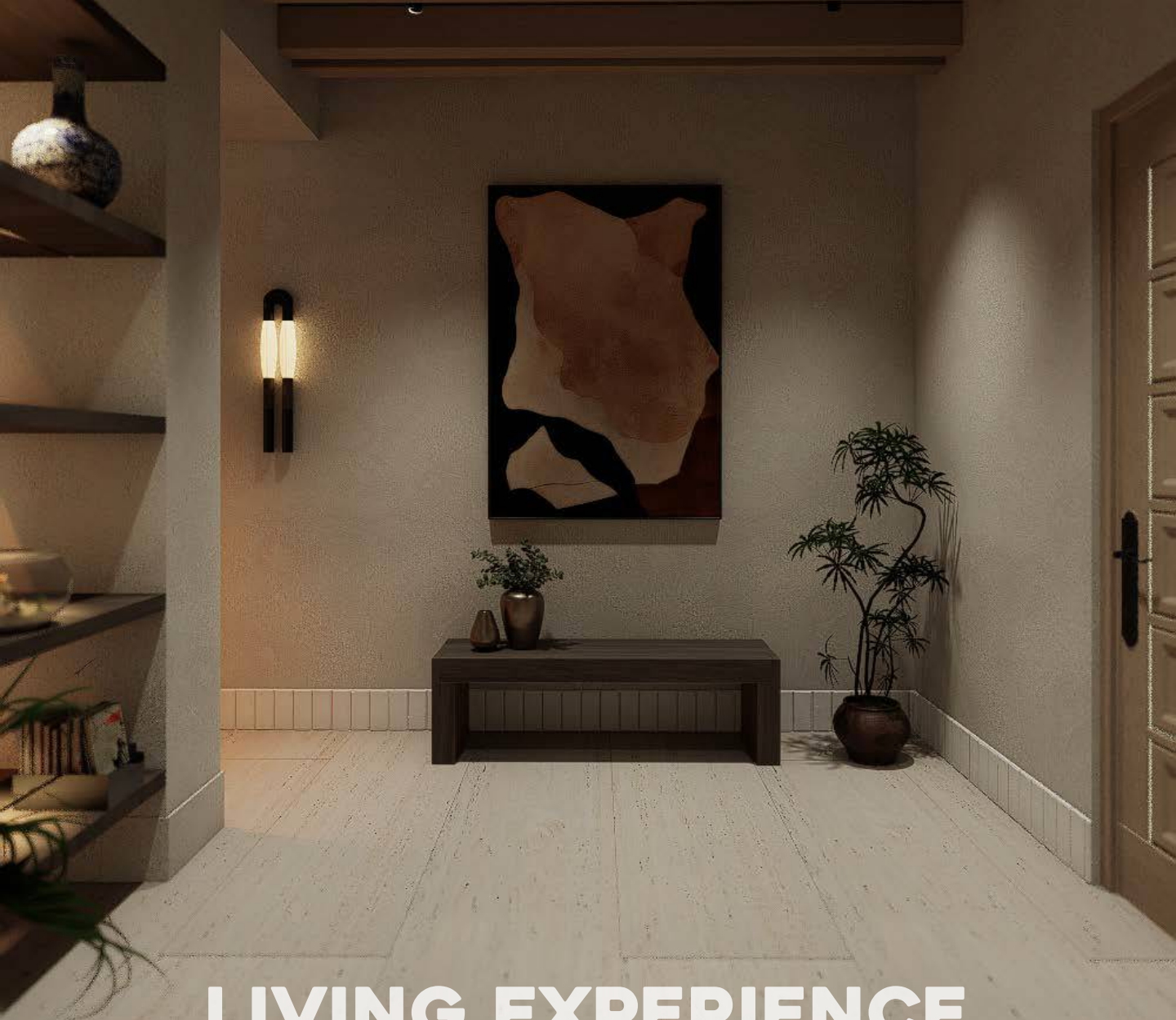
PENTHOUSE



PRIVATE TERRACE | FOURTH LEVEL

- 1. MAIN ACCESS
 - 2. OUTDOOR LIVING
 - 3. OUTDOOR DINING & GRILL
 - 4. POOL
 - 5. SUN LOUNGERS
 - 6. RESTROOM
 - 7. SERVICE ROOM
 - 8. ELEVATOR
- 136 M² / 1463 SQ. FT.

TERRACE



LIVING EXPERIENCE





LUXURIOUS





NATURAL EXCELLENCE



HIGH END FINISHES



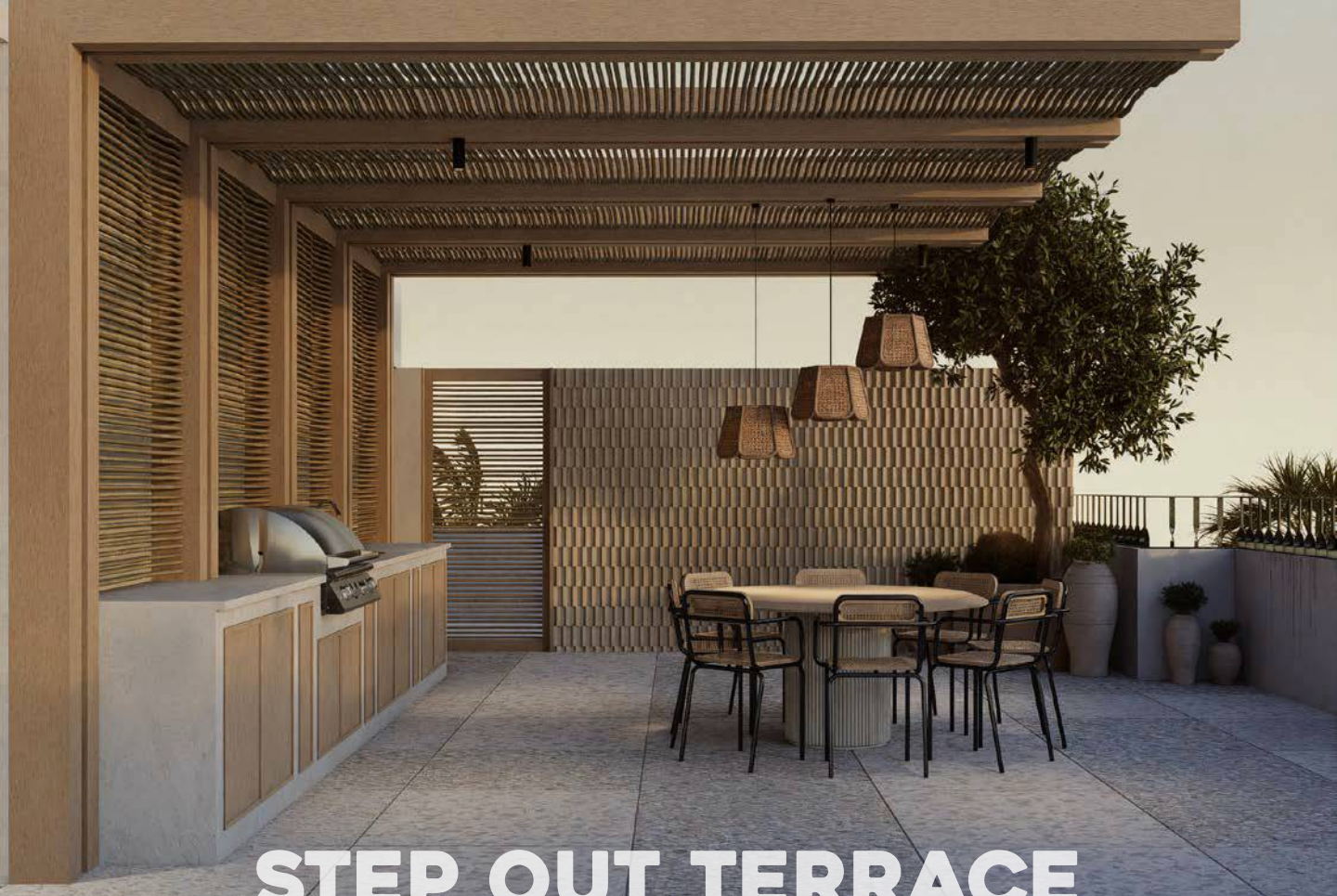


PRIVATE ROOF



PRIVATE FIREPLACE





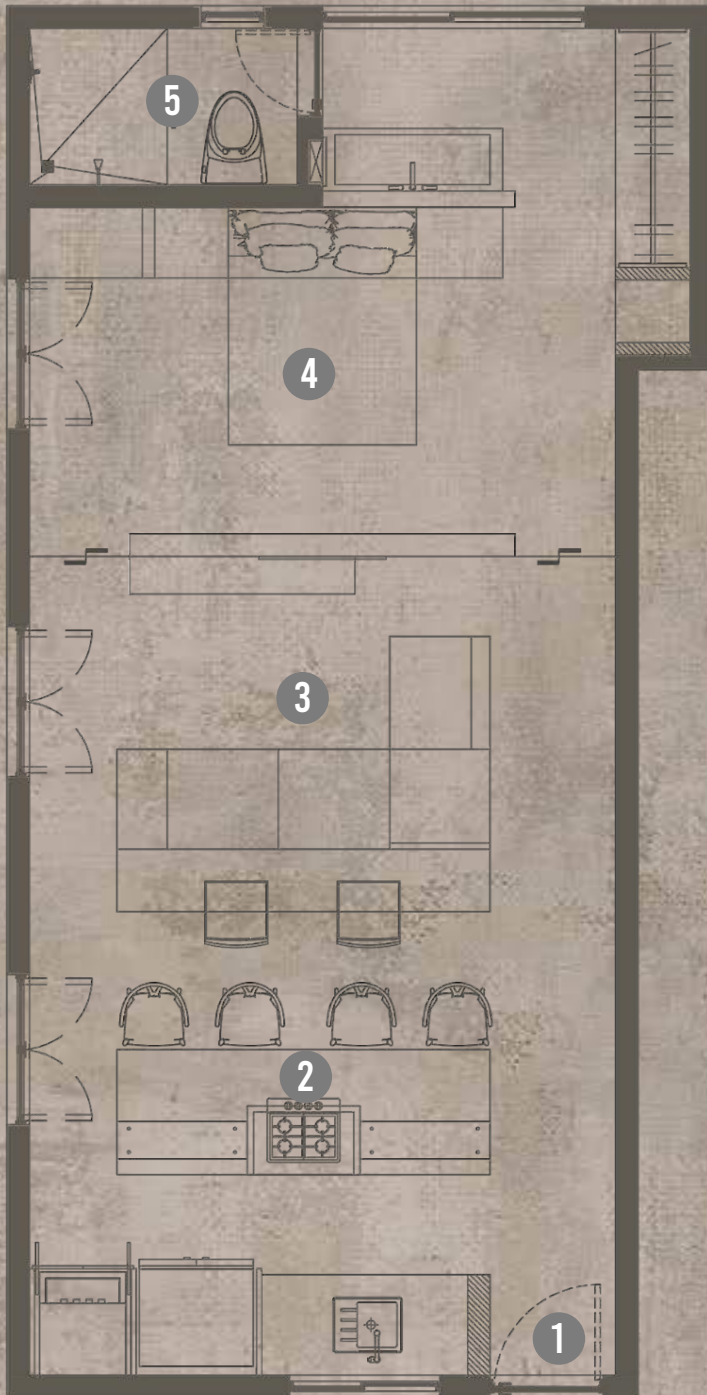
STEP OUT TERRACE



NATURAL CONNECTION



APARTMENTS



APARTMENTS | 2ND & 3RD LEVEL

- 1. ENTRANCE
 - 2. KITCHEN
 - 3. LIVING ROOM
 - 4. BEDROOM
 - 5. BATHROOM
- 51 M² / 548 SQ FT.

APARTMENTS



TERRACE | FOURTH LEVEL

1. ELEVATOR

2. OUTDOOR LIVING

3. OUTDOOR DINING & GRILL

4. POOL

5. SUN LOUNGERS

6. RESTROOMS

220 M² / 2368 SQ FT.

COMMON TERRACE

TERRACE

APARTMENTS

INTRODUCING A FULLY EQUIPPED STUDIOS APARTMENT. THIS COMPACT YET STYLISH SPACE FEATURES A MODERN KITCHENETTE. THE COZY LIVING AREA IS FURNISHED WITH A BUILT-IN SOFA, PERFECT FOR RELAXING AFTER A DAY OF EXPLORING. THE BEDROOM AREA BOASTS A PLUSH BED, ENSURING A RESTFUL NIGHT'S SLEEP. ADDITIONALLY, THE APARTMENT INCLUDES A SLEEK BATHROOM WITH CONTEMPORARY FIXTURES AND A WALK-IN SHOWER. WITH ITS FUNCTIONAL LAYOUT AND THOUGHTFUL DESIGN, THIS STUDIO OFFERS A CONVENIENT AND COMFORTABLE LIVING EXPERIENCE.





CONTEMPORARY FINISHES



ECLECTIC & MODERN



FULLY STYLIZED



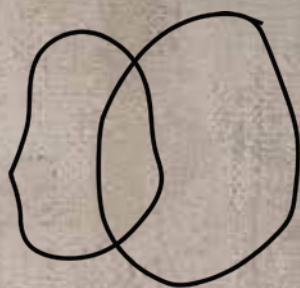
WARM & COZY



THE APARTMENT'S HEART







DOS PIEDRAS
L I V I N G

LOS CABOS, MÉXICO

2025