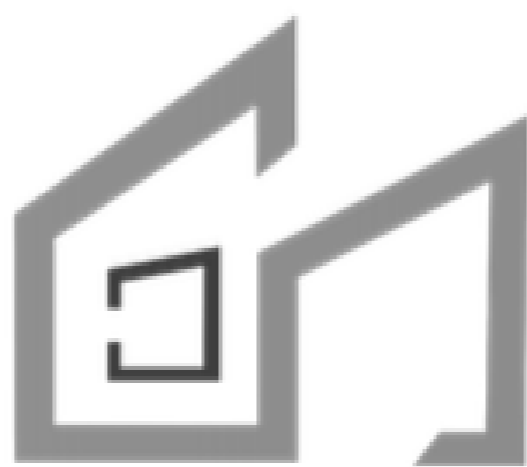


# Diana

Tropical Village

BY



CARTEP

# Welcome to Your new home

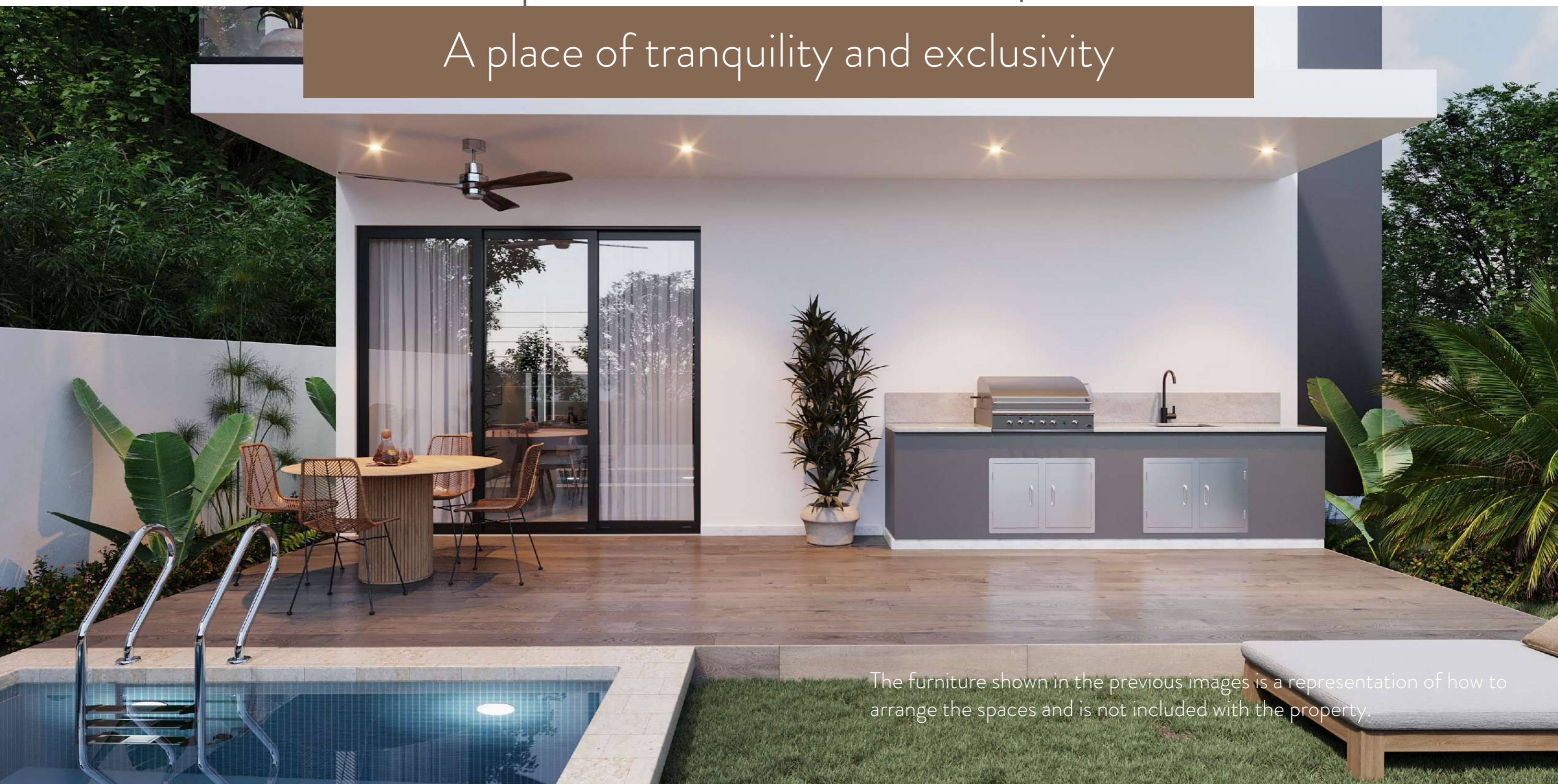


5 Minutes from  
Downtown  
Punta Cana

15 Minutes from  
Punta Cana  
Airport

8 Minutes from the most  
beautiful beaches in  
the area

A place of tranquility and exclusivity



The furniture shown in the previous images is a representation of how to arrange the spaces and is not included with the property.



# Diana

## Tropical Village

An exclusive residential project that raises the standard of living in Punta Cana, located in one of the fastest-growing and most valuable areas.



3



3.5



2

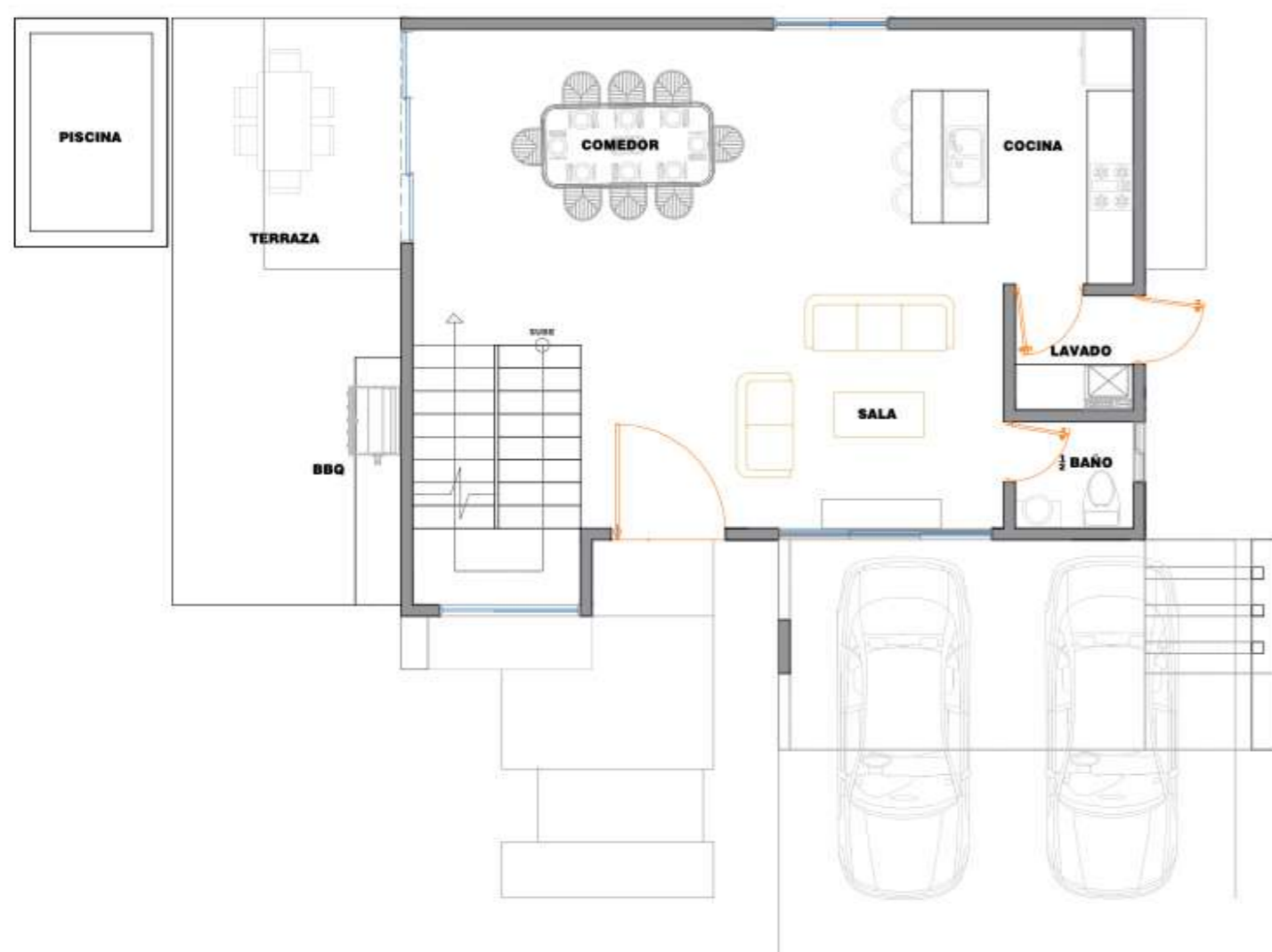


Private  
patio



Picuzzi

The furniture shown in the previous images is a representation of how to arrange the spaces and is not included with the property.



PLANO ARQUITECTONICO DEL 1er NIVEL  
(Propuesta uno) 105.88 m<sup>2</sup>

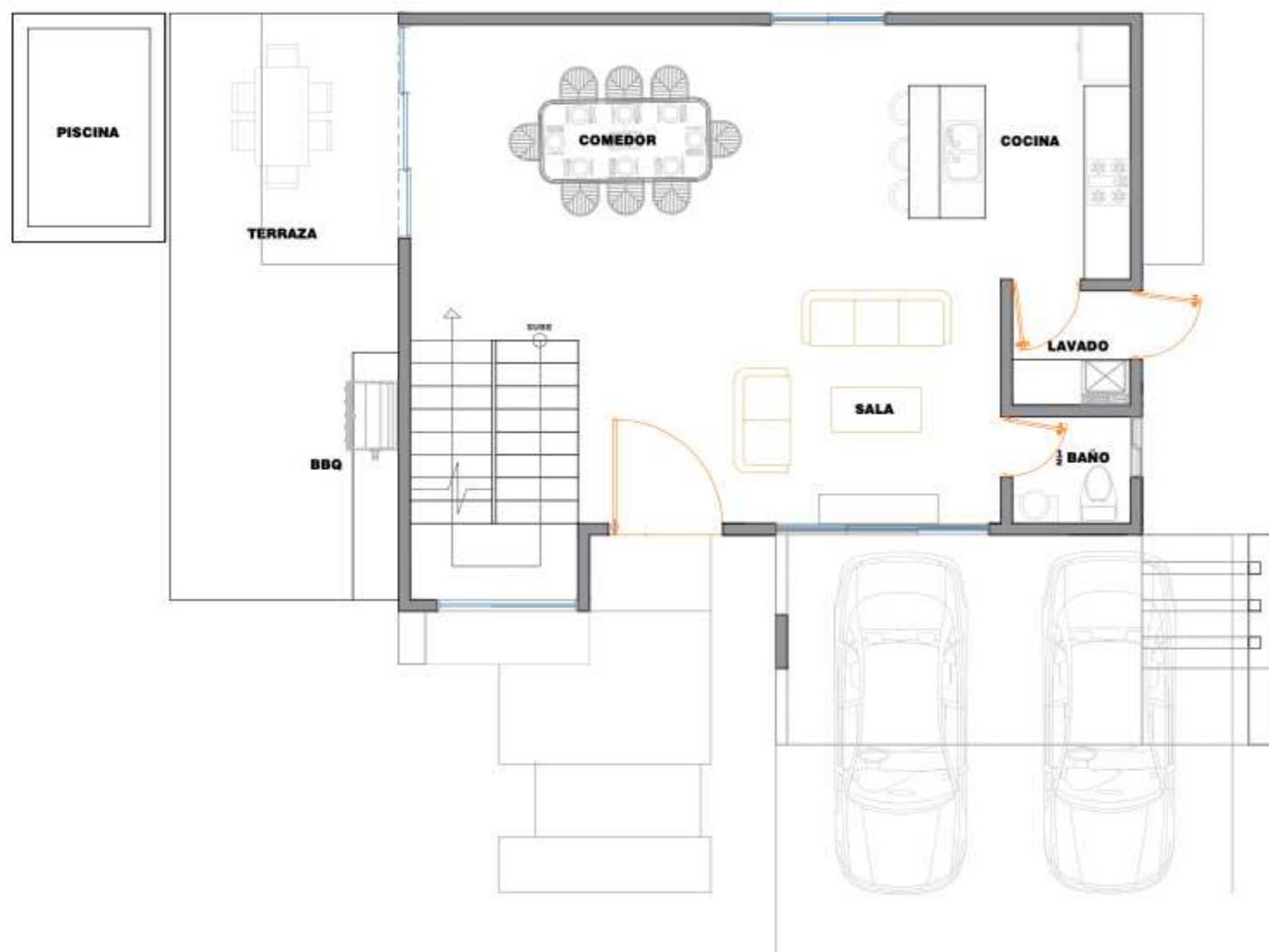


PLANO ARQUITECTONICO DEL 2do NIVEL  
(Propuesta uno) 118.34 m<sup>2</sup>

# Project details:

Diana's Tropical Village offers an exclusive design of 36 single-family villas divided into groups of 6 units for greater privacy.

The furniture shown in the previous images is a representation of how to arrange the spaces and is not included with the property.



PLANO ARQUITECTONICO DEL 1er NIVEL  
(Propuesta uno) 105.88 m2

## First level:

Living room, dining room, and kitchen in an open concept, guest half-bathroom, covered terrace, picuzzi, BBQ area, covered carport for 2 vehicles, and garden.



PLANO ARQUITECTONICO DEL 2do NIVEL  
(Propuesta uno) 118.34 m2

## Second level:

3 spacious bedrooms with private bathrooms and closets, 2 of them with exterior balconies. Construction area: approximately 224.22 sqm, on plots ranging from 266 to 316.18 sqm.

The furniture shown in the previous images is a representation of how to arrange the spaces and is not included with the property.



# Front Facade:



The furniture shown in the previous images is a representation of how to arrange the spaces and is not included with the property.



# Living-Dining Room



The furniture shown in the previous images is a representation of how to arrange the spaces and is not included with the property.



# Living-Dining Room



The furniture shown in the previous images is a representation of how to arrange the spaces and is not included with the property.



# Dining-Kitchen



The furniture shown in the previous images is a representation of how to arrange the spaces and is not included with the property.



## Bedroom-Bathroom



The furniture shown in the previous images is a representation of how to arrange the spaces and is not included with the property.



# Patio-Terrace



The furniture shown in the previous images is a representation of how to arrange the spaces and is not included with the property.



# Diana

## Tropical Village

Reserve with just \$5,000 USD.

Sign with a 20% down payment.

Pay 30% in comfortable monthly installments during construction.

Finance the remaining 50% with your bank.

Price starting at:  
**\$246,000 USD**

### **Delivery time:**

- First stage: 12 months
- Second stage: 18 months
- Third stage: 24 months
- Fourth stage: 30 months

The furniture shown in the previous images is a representation of how to arrange the spaces and is not included with the property.