

# HACIENDA C-30



GRUPO DUPLA





ACCESS FAÇADE

HACIENDA C-30

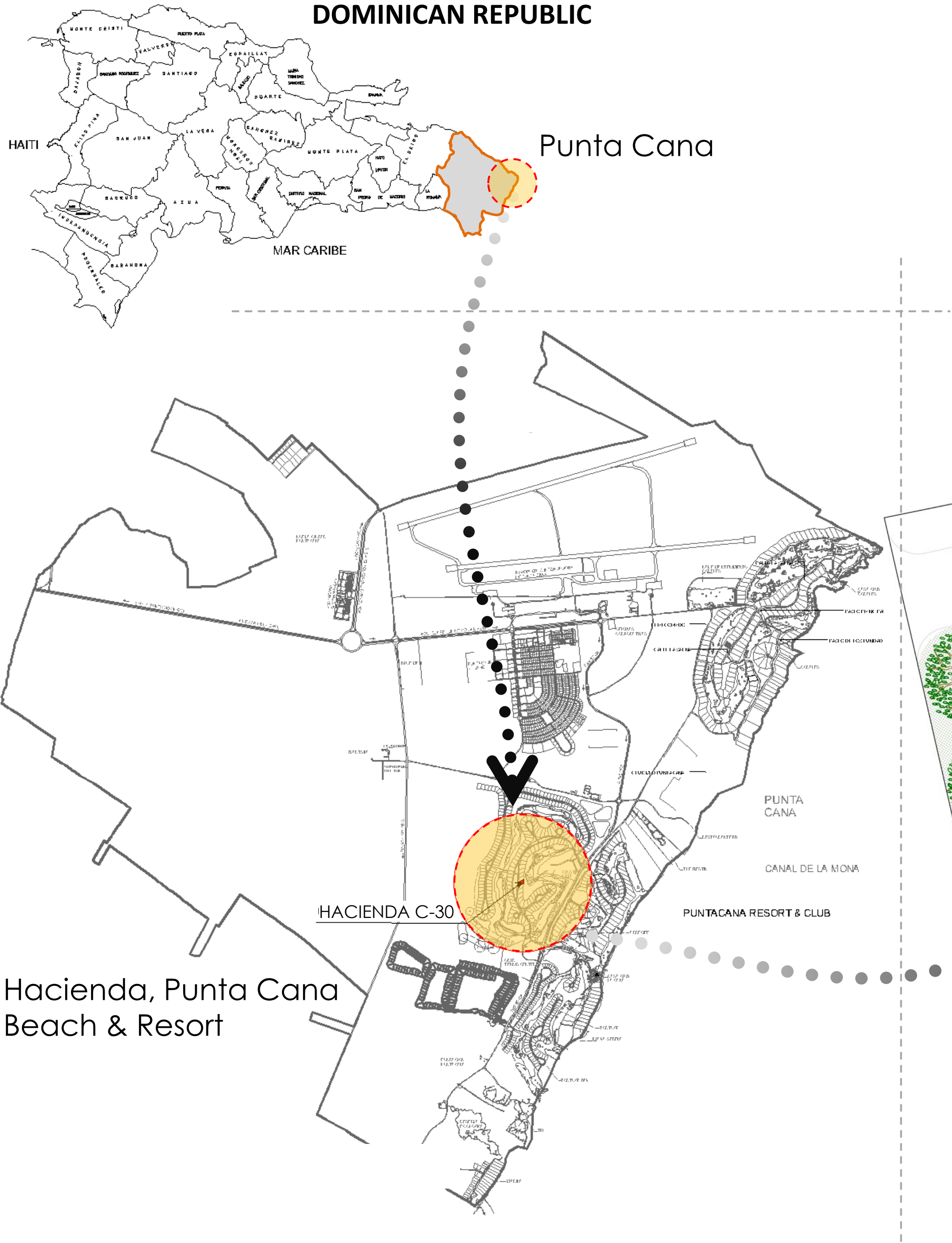


# LOCATION HACIENDA C-30

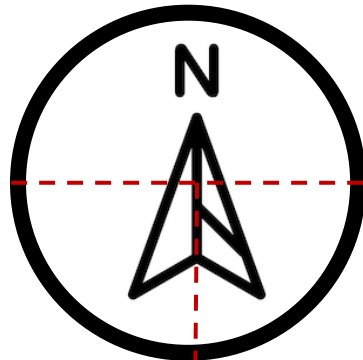
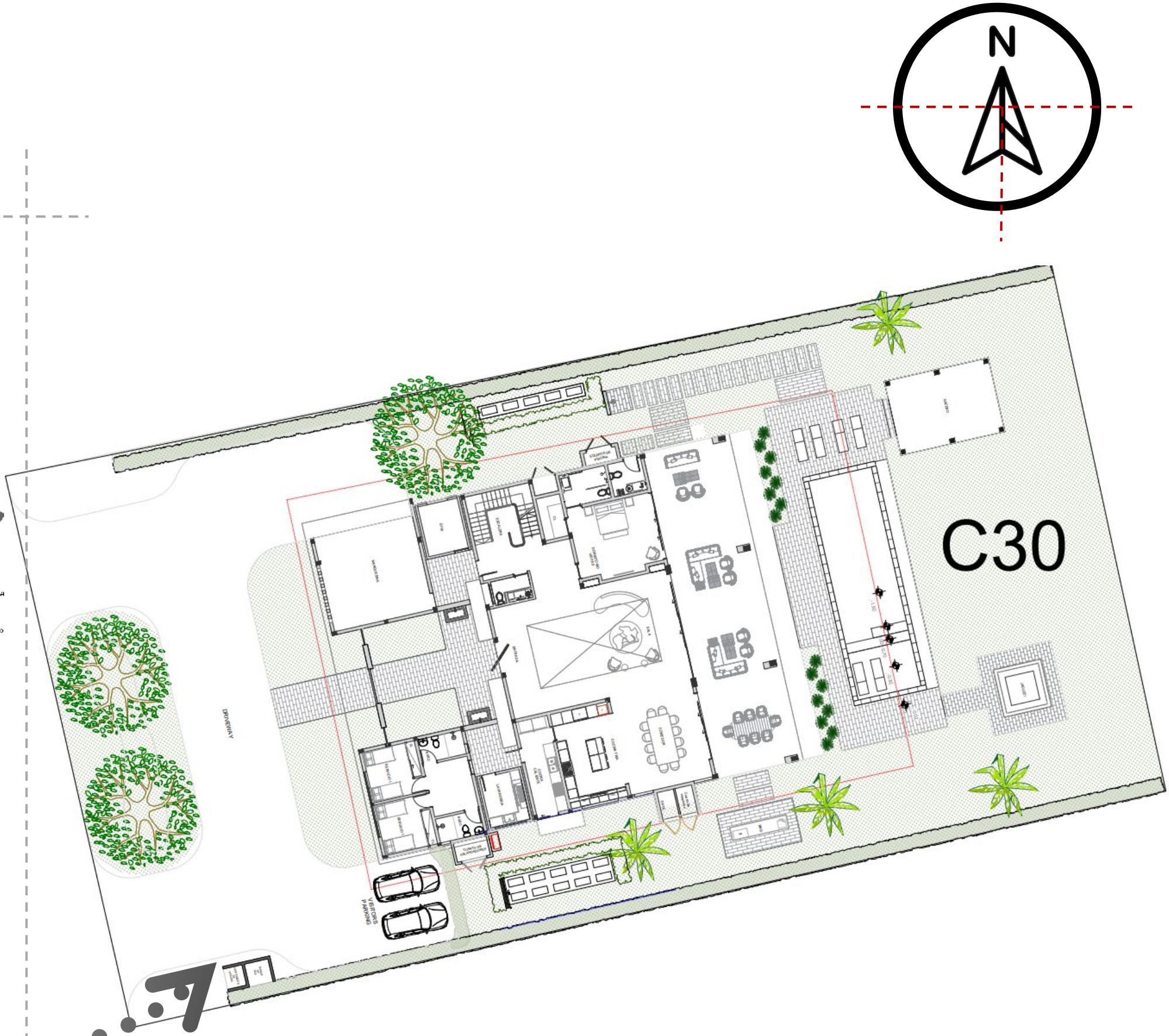
Lot:  
**2,036.80 m<sup>2</sup>**  
**(21923.932 Sq ft)**



Construction:  
**1,077.29 m<sup>2</sup>**  
**(11595.853 Sq ft)**



Hacienda, Punta Cana  
Beach & Resort





# ABOUT THE PROJECT

Hacienda C-30 is located in lot number 30 of Hacienda residential area, inside Punta Cana Resort & Club, Dominican Republic.

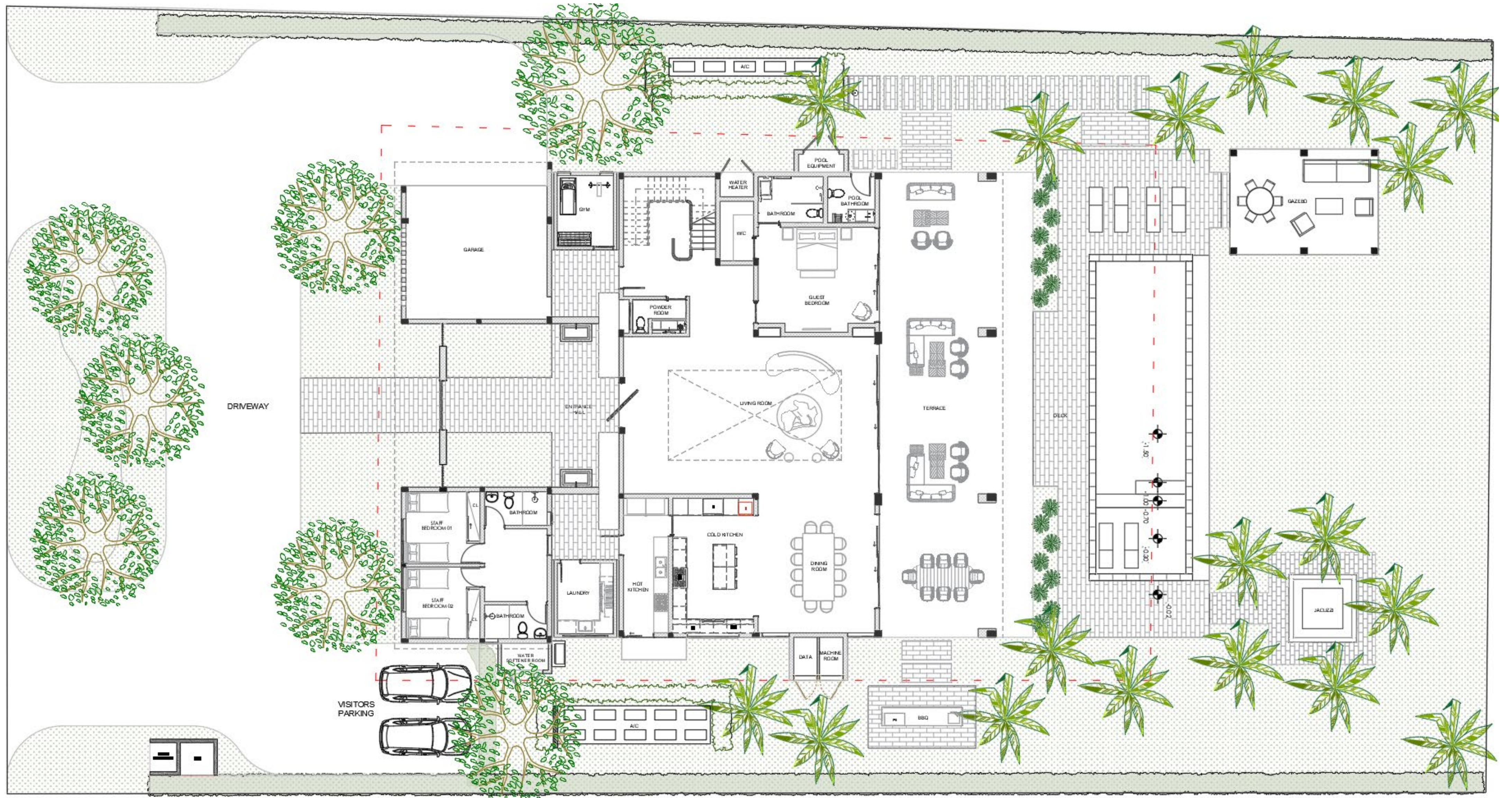
- Vehicular access
- Garage
- Exterior parking spaces
- Foyer
- Living room
- Family room
- Cold kitchen
- Hot kitchen
- Laundry room
- Gym
- 6 Bedrooms with bathrooms and walk-in closets
- Guest bedroom with bathroom and walk-in closet
- Guest bathrooms
- Terrace
- Pool
- Jacuzzi
- Outdoor shower
- BBQ
- Gazebo
- 2 Service rooms with bathrooms
- Data room
- Machine rooms
- Cleaning closet

---

## HACIENDA C-30



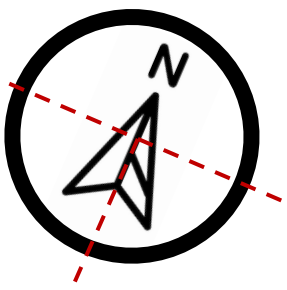
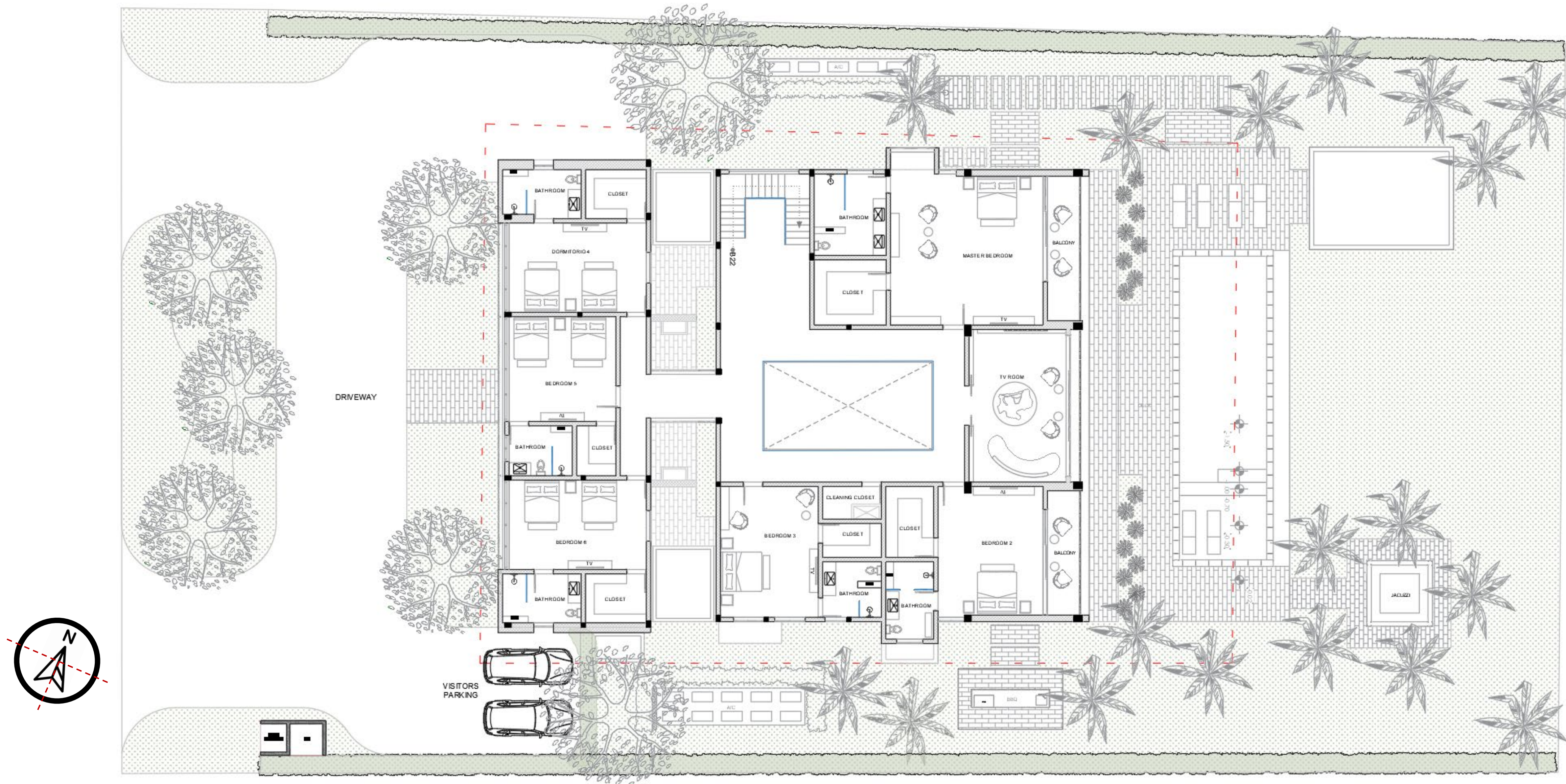




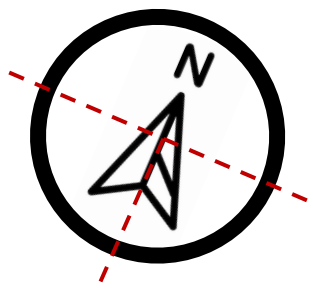
# HACIENDA C-30

## First Floor







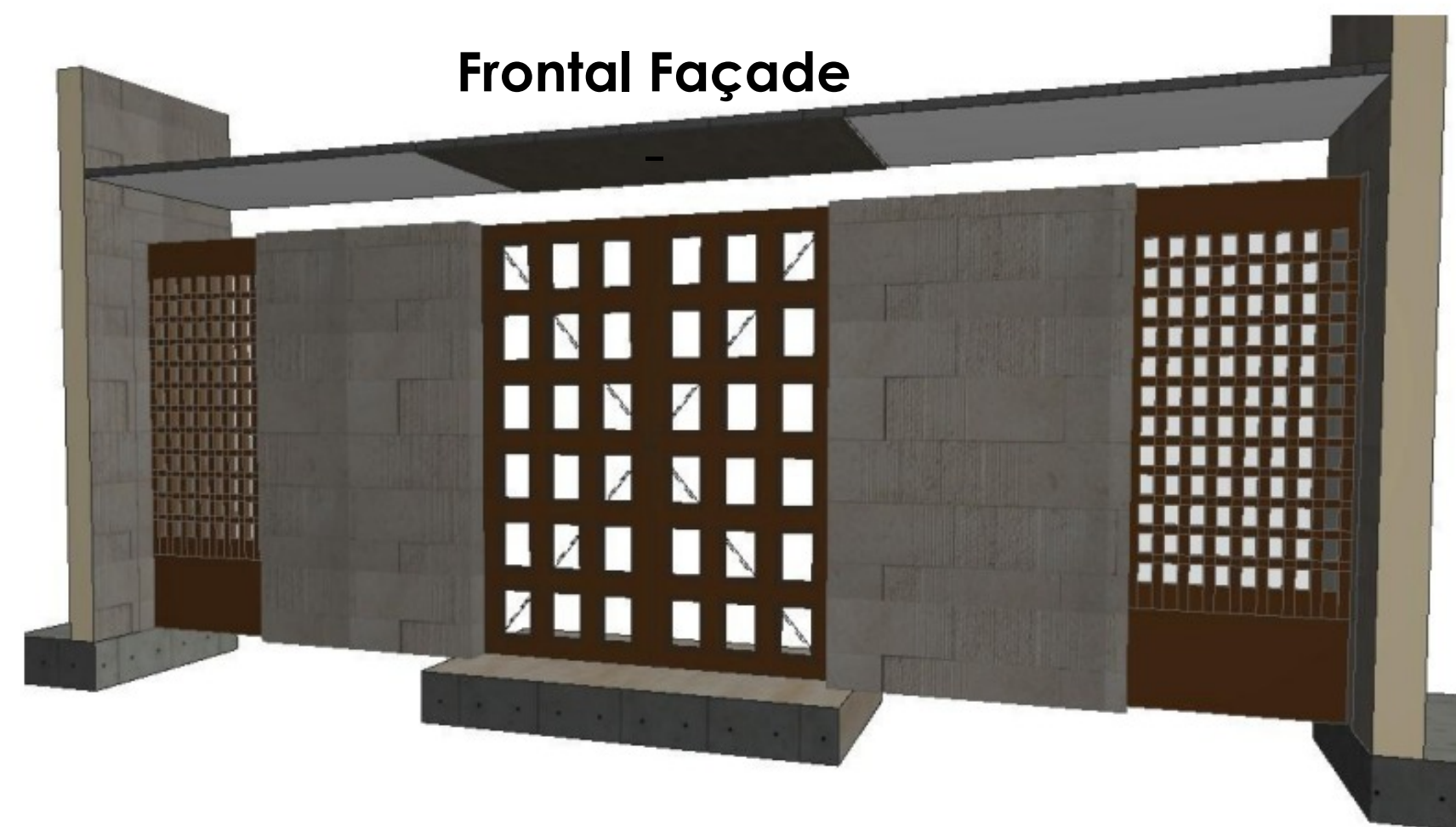


## Roof plan





# FACHADA



-Main door and lateral panels in corten steel.

-Sliding aluminum louvers wood imitation

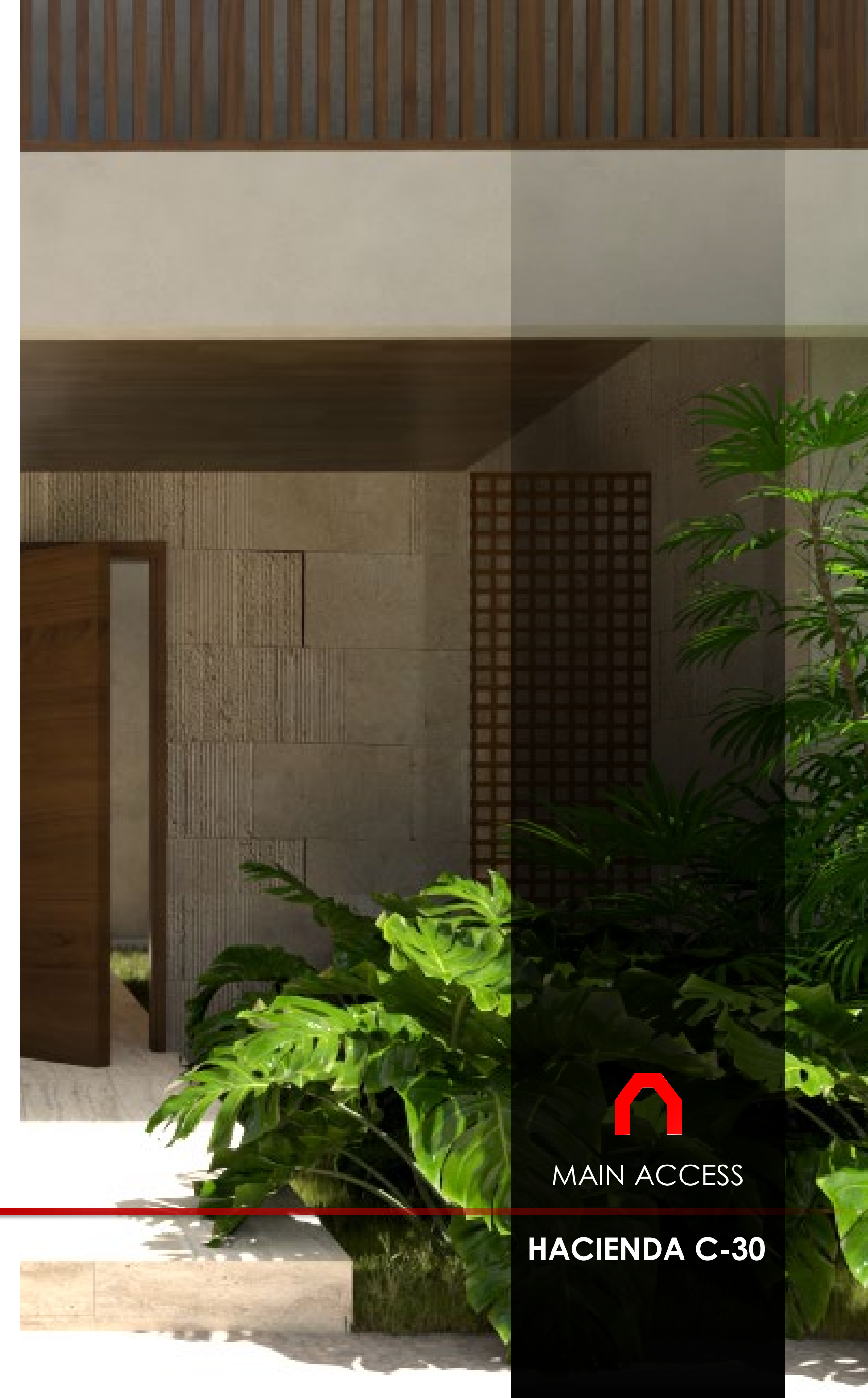
-Areas with perrilla, mixture of Paint and sand and fluted coral stone on general façade



-Sliding aluminum louvers  
wood imitation



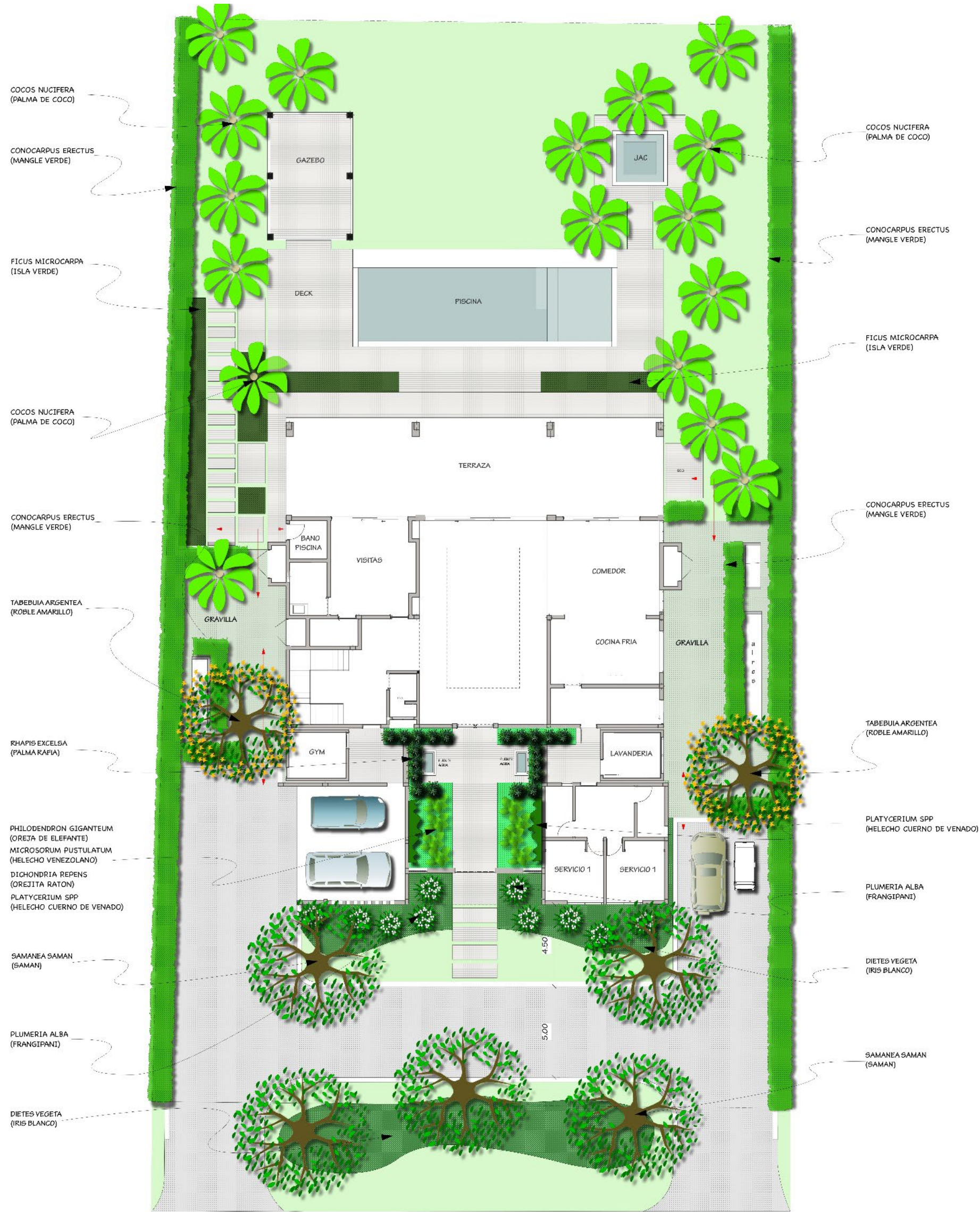
-Coral Stone (Imported stone) in  
entrance walls and columns





# LANDSCAPING

Modern landscaping representing  
tropical, warm and native plants



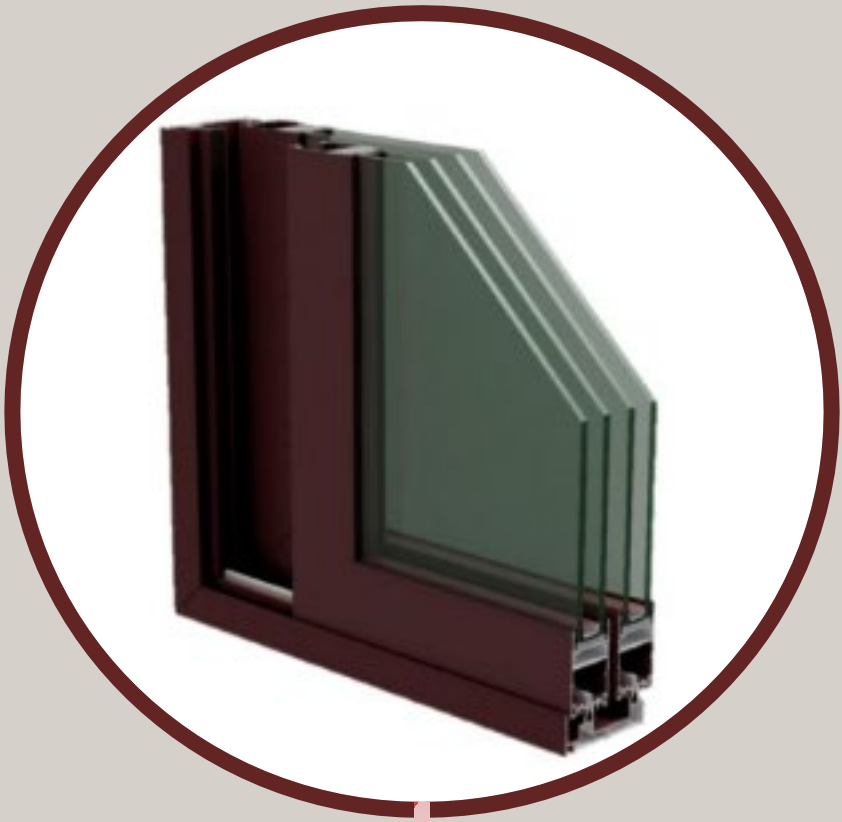


# ALUMINUM GLASS CARPENTRY

*Exterior doors and windows*

## Elevated sliding profiles

- Elevated sliding profiles with thermal insulator.
- Thin aluminum trims for a cleaner look.
- Glass thickness of 33mm.
- Hurricane Windows and doors able to resist up to 251km/h.



Aluminum railing and general carpentry of aluminum and glass and bronze profiles.

NOTE: REFERENCE IMAGES

HACIENDA C-30



MARCH 2025



# DOOR

INTERIOR WOODEN DOORS



Wood: Oak

Finishes: Wash stain wooden door

NOTE: REFERENCE IMAGES

## HACIENDA C-30



MARCH 2025



# COLD KITCHEN

## FINISHES

Kitchen furniture with finishes of White washed oak and White waterproof mdf with integrated door pulls and quartz countertop

## INCLUDED EQUIPMENT

- Stainless Steel Side-by-Side Column Refrigerator and Freezer Set with Flat Trim Kit.
- 50 Lb Cube Ice Machine
- Dishwasher 24''
- Stainless Steel 36" gas stove with thermo-ventilated oven and cast iron grills.
- Cooker hood 36''

**Note:** Decorative lamps not included







WHITE WASHED OAK AND WHITE  
WATERPROOF MDF WITH  
INTEGRATED DOOR PULLS



COUNTERTOP AND  
BACKSPLASH DARK PEARL

HACIENDA C-30

COLD KITCHEN FINISHES



# HOT KITCHEN AND LAUNDRY

## **FINISHES**

### **Hot Kitchen**

Natural oak furniture with integrated pulls, White quartz countertop and backsplash.

### **Laundry**

Natural oak furniture with integrated pulls, White quartz countertop and blue tiles backsplash.

## **INCLUDED EQUIPMENT**

### **Hot Kitchen**

- Side-by-side fridge with water and ice dispenser.
- 30 inch gas stove with airfrier oven and iron grill.
- Range Hood.

### **Laundry**

- Inverter washer and dryer frontal load.





# BATHROOM DOSSIER

## BATHROOM

- Main bathroom clad in marble, with showers, surface faucets, and built-in mirror.
- Integrated marble and quartz countertop sink.
- Shower niches clad in marble.
- Shower cladding, Coralina.
- Wall and ceiling finish, white color.
- Coralina flooring.
- Glass partitions, according to design.
- Chrome finishes faucets and accessories.
- Mirrors in bathrooms.





# CLOSETS FINISHES

## Closets

- Master closets with center island and quartz countertop.
- Modular closets



(SIN TIRADORES)

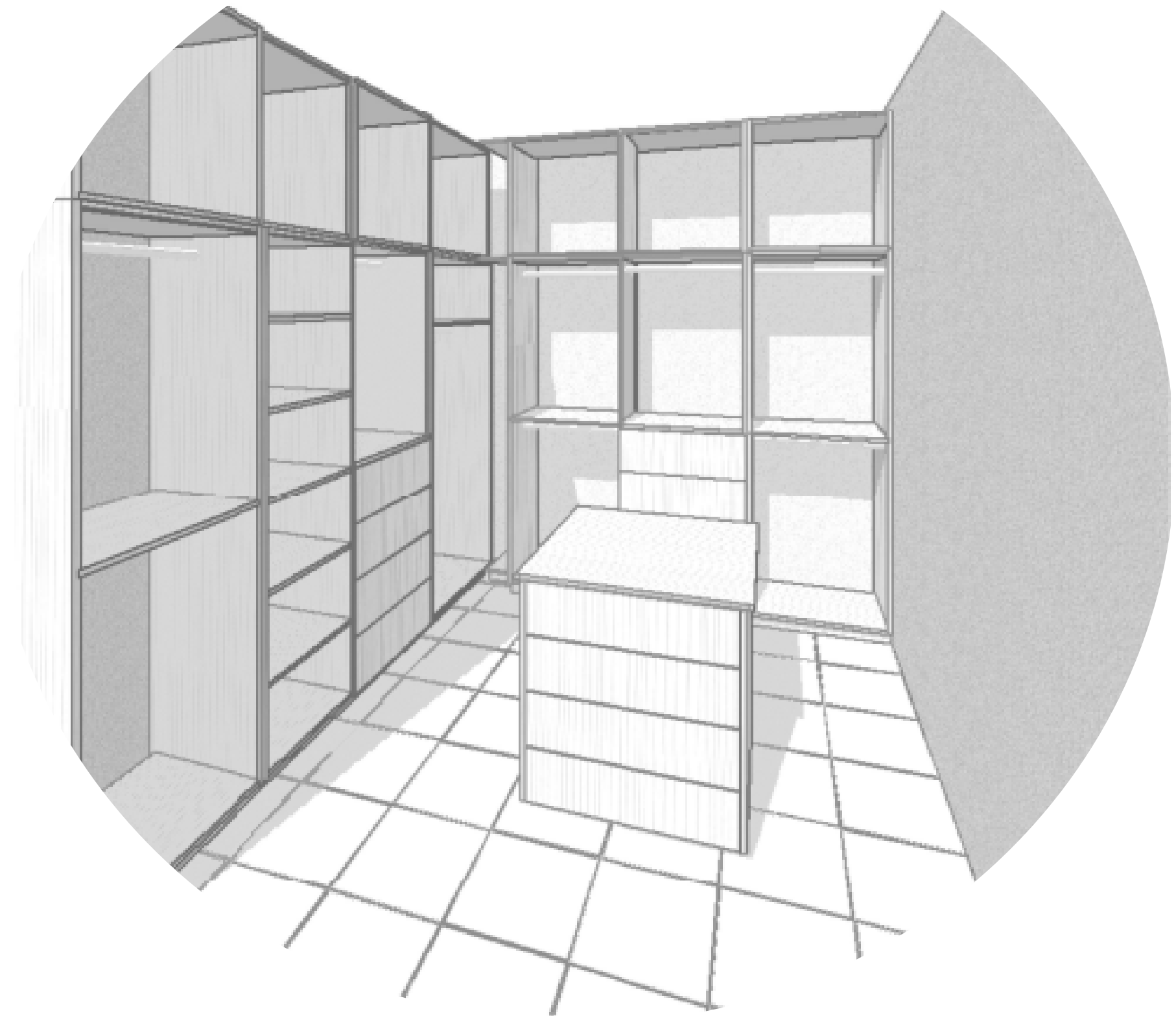
APERTURA CON  
CORTE 45°



MELAMINA  
HIDROFUGA  
BLANCA



GAVETA CON CORREDERA  
TELESCOPICA  
EXTRACCION TOTAL CON  
CIERRE LENTO.



Schematic isometric of master closet



# Electrical specifications

## Domotics:

- Speakers on terrace and pool.
- Lighting control in common areas.

## Lighting:

- Project lighting (without decorative lamps).

## Fans:

- 84'' fans with oiled bronze finish on terraces and outdoor dining area.

## Water Heaters:

- Water heaters.

## Climate-Controlled Spaces:

- Cold kitchen.
- Dining room.
- Living room.
- Gym.
- Guest bedroom.
- Living room.
- Service bedroom 01.
- Service bedroom 02.
- TV room.
- Master bedroom.
- 5 Secondary bedrooms.



**Xtreme H<sub>2</sub>O**  
F896-84-ORB

**84"**

Great Room  
12' x 15'  
Over 160 sq. ft.



Shown with optional  
Light Kit K886L-ORB  
Sold Separately



BOND  
COMPATIBLE



REMOTE  
CONTROLLED



DC MOTOR



WET  
RATED



RC400

INDOOR / OUTDOOR  
WET RATED

**minkaAire**



# GENERAL FINISHES

- **Floors 1st level:** Coralina.
- **Floors 2nd level:** Coralina.
- **Balcony floors:** Coralina.
- **Shower cladding:** Coralina.
- **Interior doors:** Wood, natural finish.
- **Exterior doors:** Aluminum and glass doors, bronze profile.
- **Stairs:** Treads and risers in Coralina.
- **Kitchens and laundry:** Natural wood finishes and solid color.
- **Exterior terrace:** Coralina.
- **Main door:** Wood.
- **Vehicle entrance:** White gravel.
- **Interior walls:** Drift of Mist SW 9166 paint.
- **Exterior walls:** Finish in perrilla and sand-painted mixture.
- **Railings:** Glass.





# BBQ & GAZEBO

## **Gazebo**

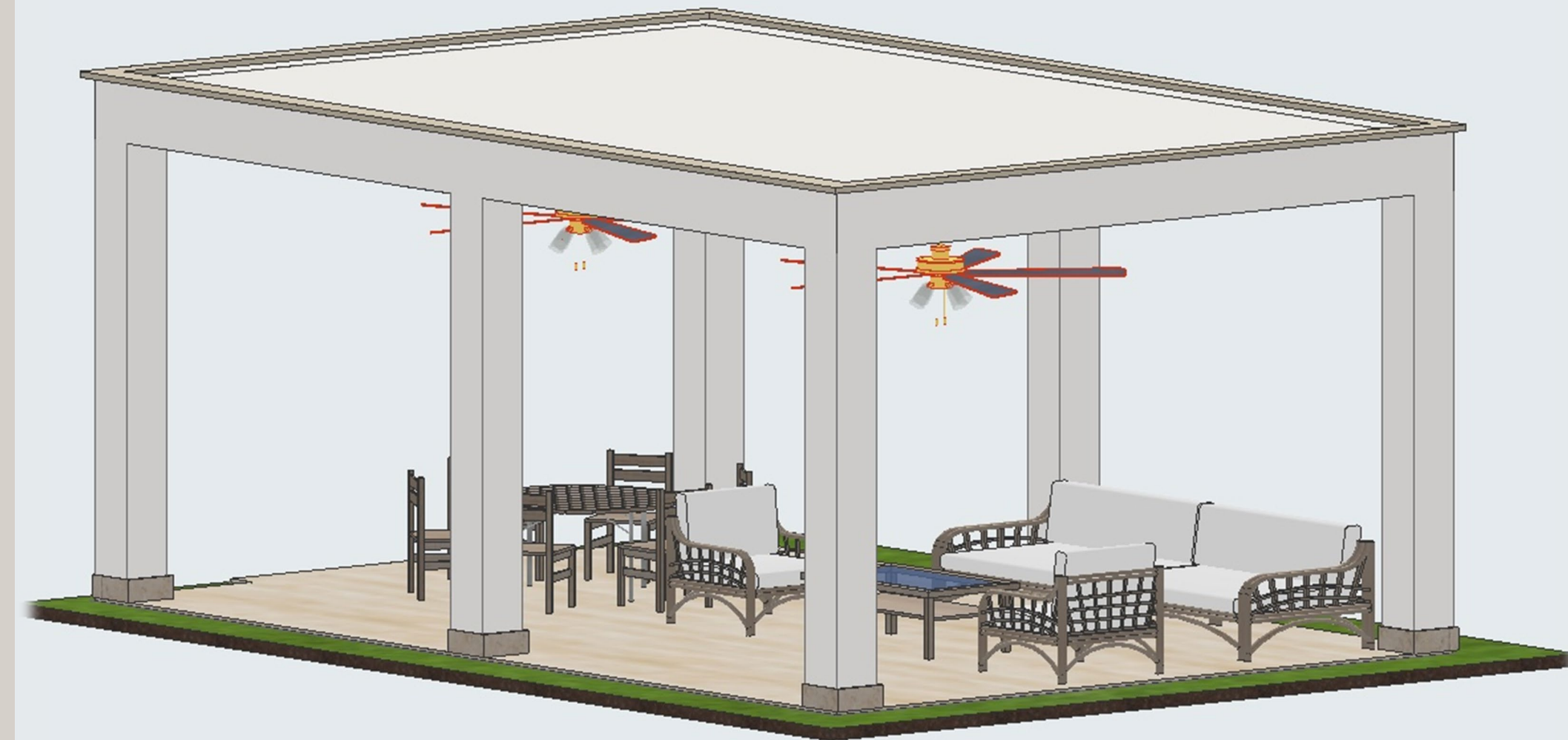
Concrete structure, roof covered in wood with decorative beams;  
Columns with perrilla finish. Project lighting and 84" fans with oiled bronze finish.

## **BBQ**

Concrete structure with perrilla finish. Includes sink.

## **Entrance walkway and large living room:**

Wooden planks ceiling with bleached oak wash finish.





# WATER FEATURES

**Pool:** Cladding in Coralina.

**Jacuzzi:** Cladding in Coralina, both interior and exterior.

**Entry fountains:** Cladding in Sukabumi interior, exterior finished in perrilla.

**Pool and Jacuzzi equipment:**

- Pool equipment
- Blower
- Jacuzzi heater





# HACIENDA C-30



---

GRUPO DUPLA 