



*selvamaya*

AT HARMONY

# selvamaya

AT HARMONY

---

We are experts in creating community.

We have been developing real estate projects in the area for more than **15 years**. We work to guarantee the **best location** and the **greatest investment** certainty in the short and long term, **always satisfying market preferences**, aiming at innovation and **respecting the environment**.

---









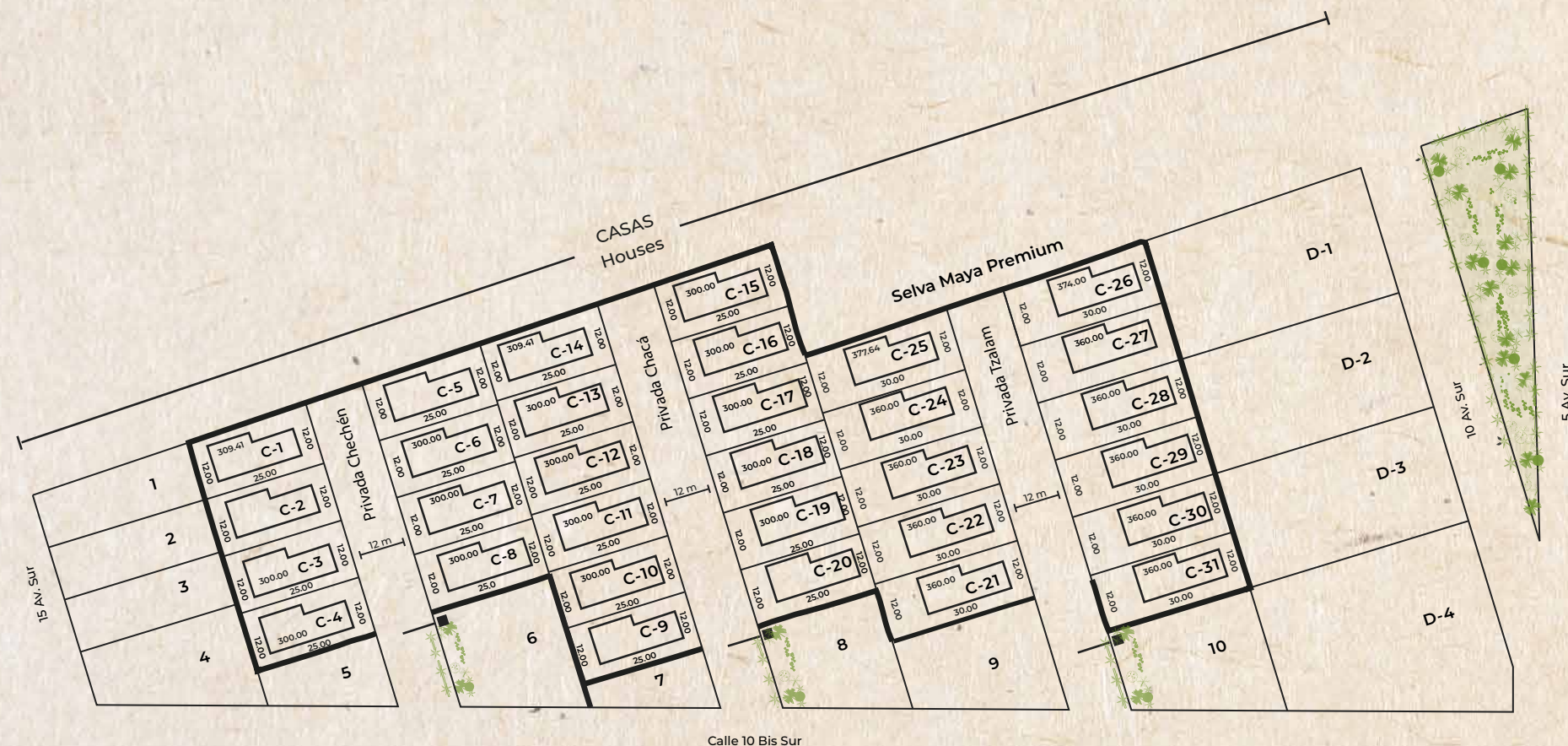
# About the Project

An exclusive residential project in the heart of the Mayan jungle.

14 EXTERIOR MIXED-USE LOTS

31 SINGLE-FAMILY LOTS

These are spread across 3 private streets with controlled access. The interior lots are exclusively for houses.



- Acceso controlado / Controlled access.
- Barda perimetral / Perimeter Fence.
- 12 m Calles internas de 9 m + 2 banquetas de 1.5 m / Internal streets of 12 m + 1.5 m sidewalks.



## SERVICES



Sidewalks and Curbs



24/7 Security and Controlled Access



Home Construction



Underground Electrical Network  
(High Quality/Low Consumption)



Perimeter Wall

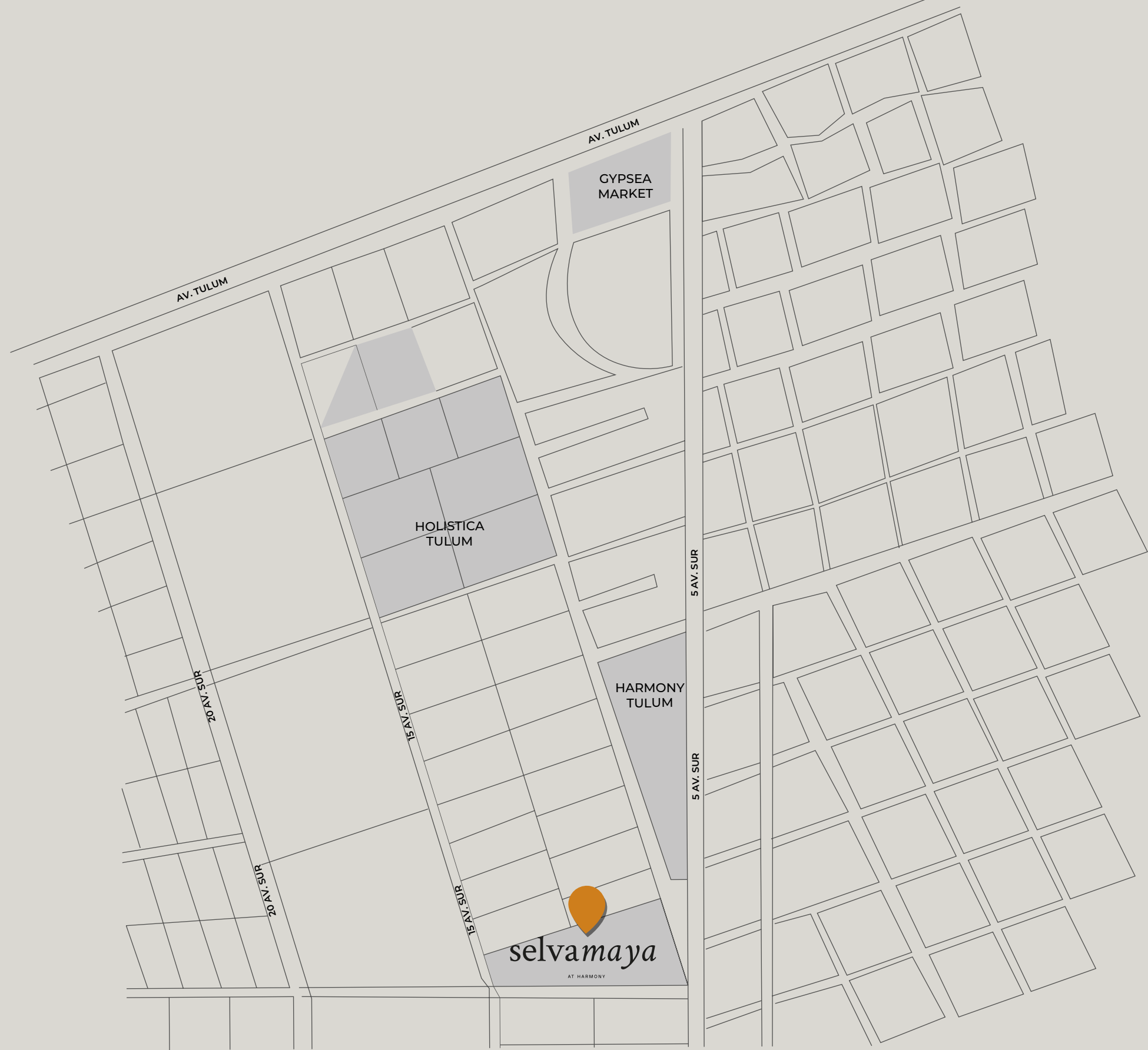


Underground Voice and  
Data Installation



# LOCATION

<b>Holistika</b>	1 min
<b>Gypsea Market</b>	2 min
<b>Av. Tulum</b>	2 min
<b>Av. Kukulcán</b>	5 min
<b>Playa</b>	10 min







## *Exclusivity and Construction Regulations*

---

The lots are exclusively designated for the construction of houses, and all projects must comply with construction guidelines and be approved by our team of experts. This ensures the quality and aesthetics of the development.

As an additional service, we offer vacation rental management, interior design, and landscape design.

---

*selvamaya*



---

# Neoterre. | HOUSES

---

As a supplementary service, we provide the construction of any of our three high-quality and beautifully designed house models:

Model A

Model B

Premium

Discover them below:

[Visit our new Showroom](#)





## 01.- Model A House.

### *Specifications*

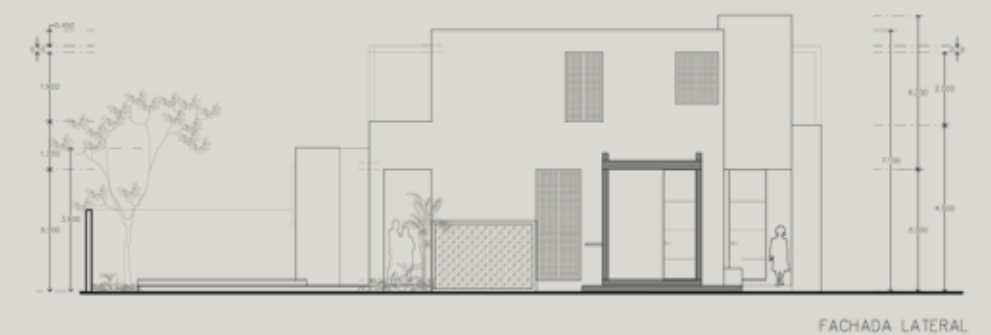
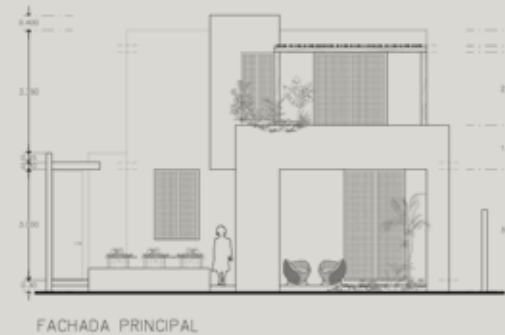
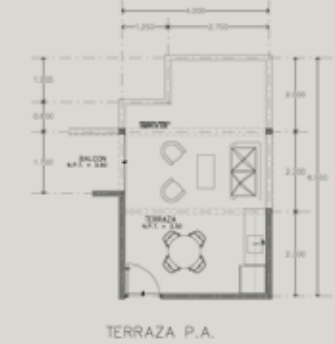
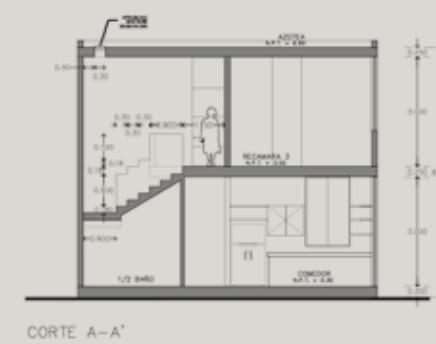
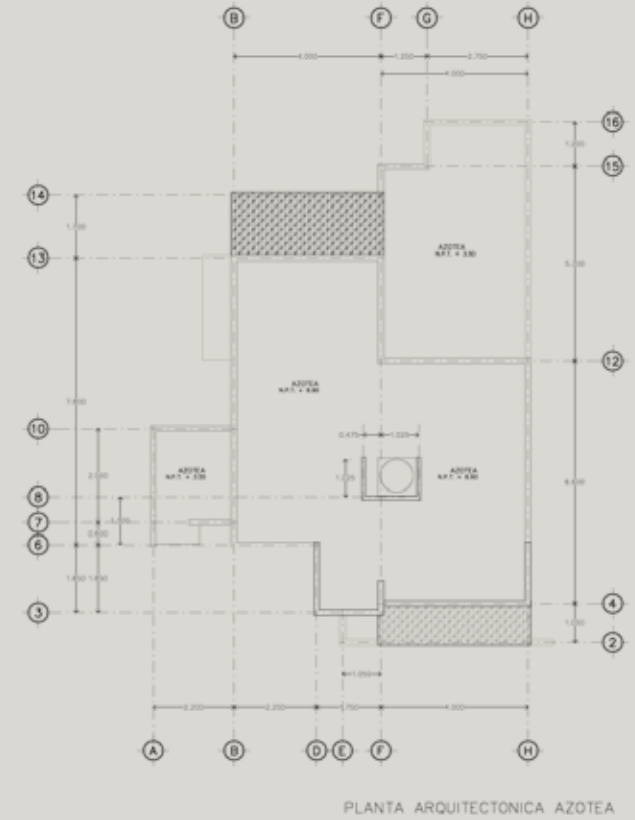
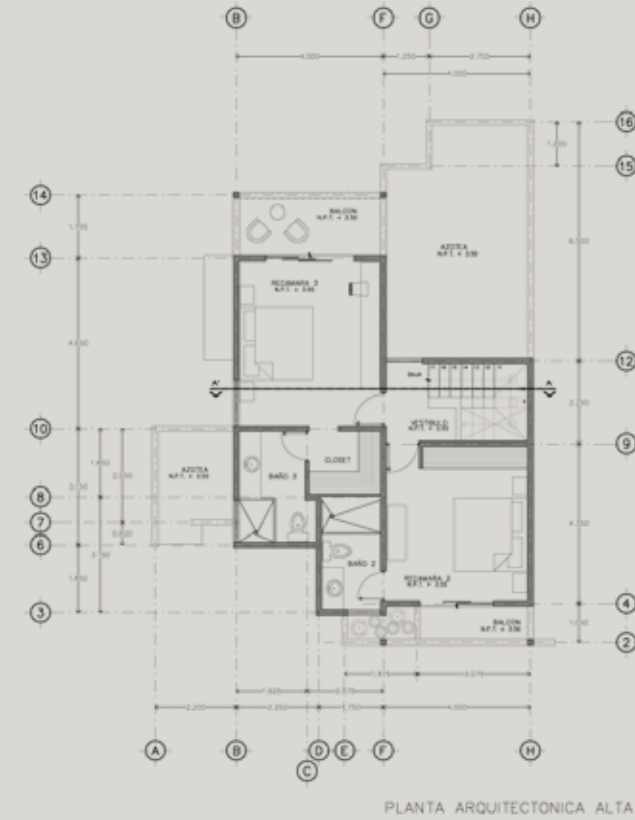
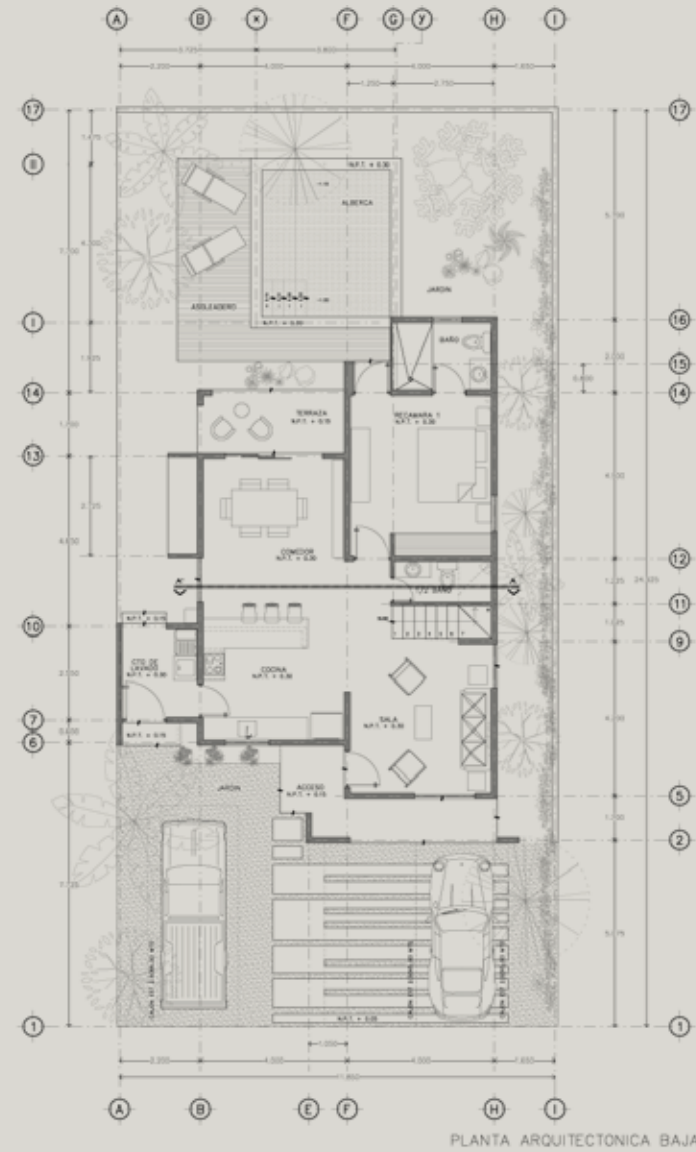
- Land size: 3,228 Sq. ft
- 3 bedrooms / 3.5 bathrooms and closet
- 9.84 Feet ceiling height
- Laundry area
- Swimming pool
- Half bathroom for guests
- 4th bedroom, terrace, and/or rooftop (optional)

[Visit our new Showroom](#)



# Model A Floor Plans

Ground Floor: 1164.65 ft<sup>2</sup>  
 Upper Floor: 683.62 ft<sup>2</sup>  
 Front Pergola: 46.50 ft<sup>2</sup>  
 Rear Pergola: 75.99 ft<sup>2</sup>  
 Swimming Pool: 202.04 ft<sup>2</sup>  
 Deck: 155.22 ft<sup>2</sup>  
 Total: 2328.02 ft<sup>2</sup>











## 02.- Model B House.

### *Specifications*

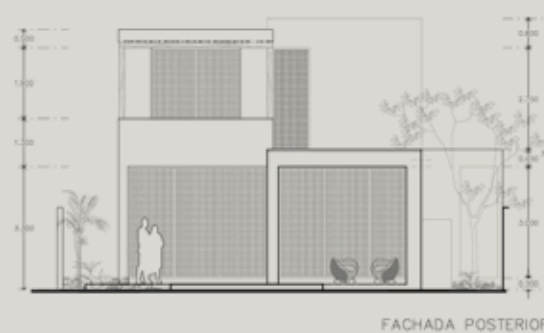
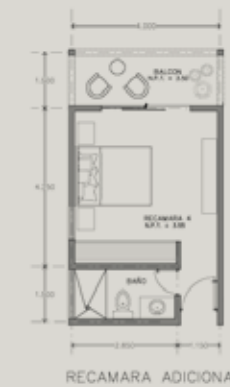
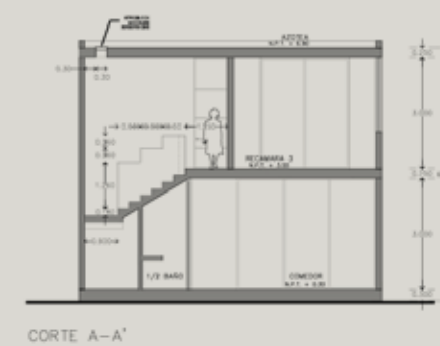
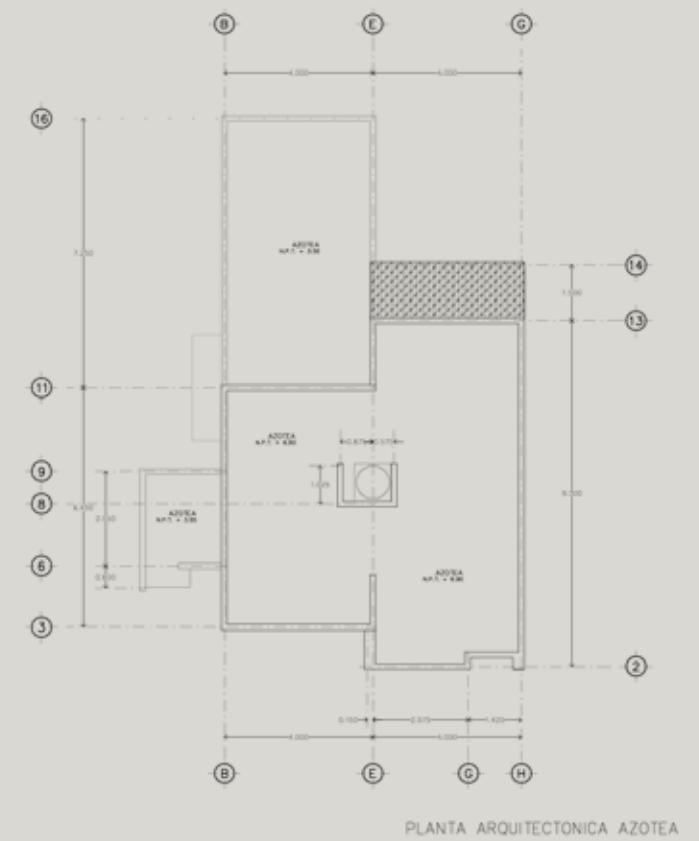
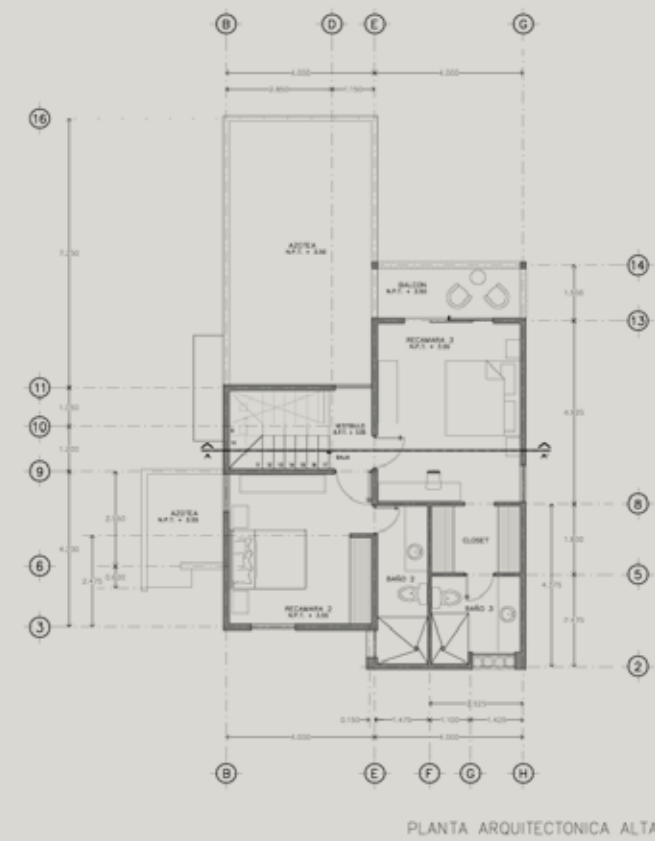
- Land size: 3,228 Sq. ft
- 3 bedrooms / 3.5 bathrooms and closet
- 9.84 Feet ceiling height
- Laundry area
- Swimming pool
- Half bathroom for guests
- 4th bedroom, terrace, and/or rooftop (optional)

[Visit our new Showroom](#)



# Model B Floor Plans

Ground Floor: 1,165.68 ft<sup>2</sup>  
 Upper Floor: 708.06 ft<sup>2</sup>  
 Rear Pergola: 67.05 ft<sup>2</sup>  
 Swimming Pool: 178.77 ft<sup>2</sup>  
 Deck: 219.36 ft<sup>2</sup>  
 Total: 2,338.92 ft<sup>2</sup>









### 03.- Upgrades *Additional Cost*



Terrace



4th Bedroom





# *selvamaya*

PREMIUM

---

## *Specifications*

---

- Land of 3,875 Sq. ft
- 4 bedrooms
- Double-height ceilings
- Service room
- Swimming pool
- Rooftop.



# Premium Floor Plans

Land: 3,875.01 ft<sup>2</sup>  
 Ground Floor: 1,552.36 ft<sup>2</sup>  
 Upper Floor: 1,318.77 ft<sup>2</sup>  
 Rooftop: 145.62 ft<sup>2</sup>  
 Swimming Pool: 295.33 ft<sup>2</sup>  
 Pergolas: 274.83 ft<sup>2</sup>  
 Total: 3,586.91 ft<sup>2</sup>



PLANTA ARQUITECTÓNICA BAJA



PLANTA ARQUITECTÓNICA ALTA



PLANTA ARQUITECTÓNICA ROOF TOP



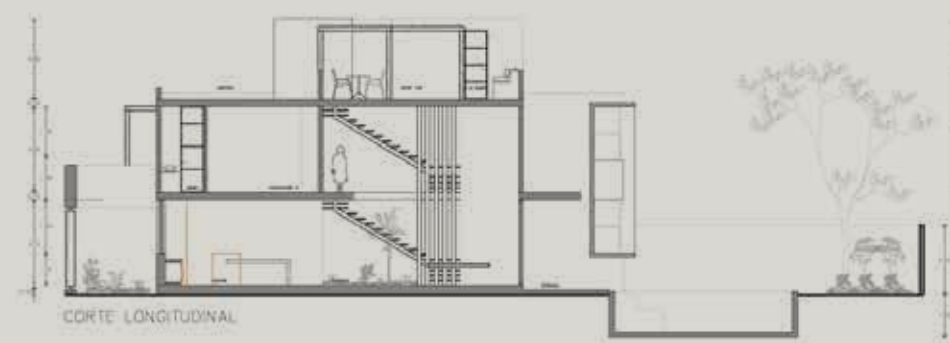
PLANTA ARQUITECTÓNICA AZOTEA



FACHADA PRINCIPAL



FACHADA POSTERIOR



CORTE LONGITUDINAL

















Neoterre.

DESARROLLOS ÚNICOS,  
OPORTUNIDADES REALES.