

RESIDENCE 03



THOMPSON®
PUERTO VALLARTA
HOTEL & RESIDENCES

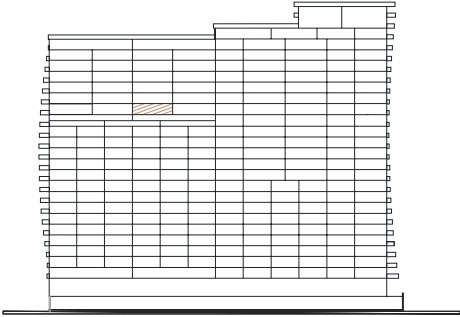
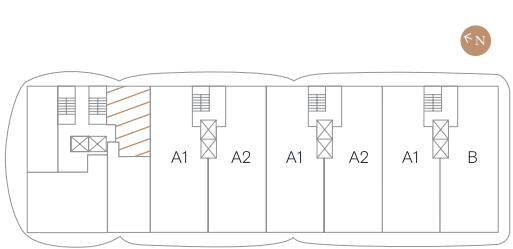
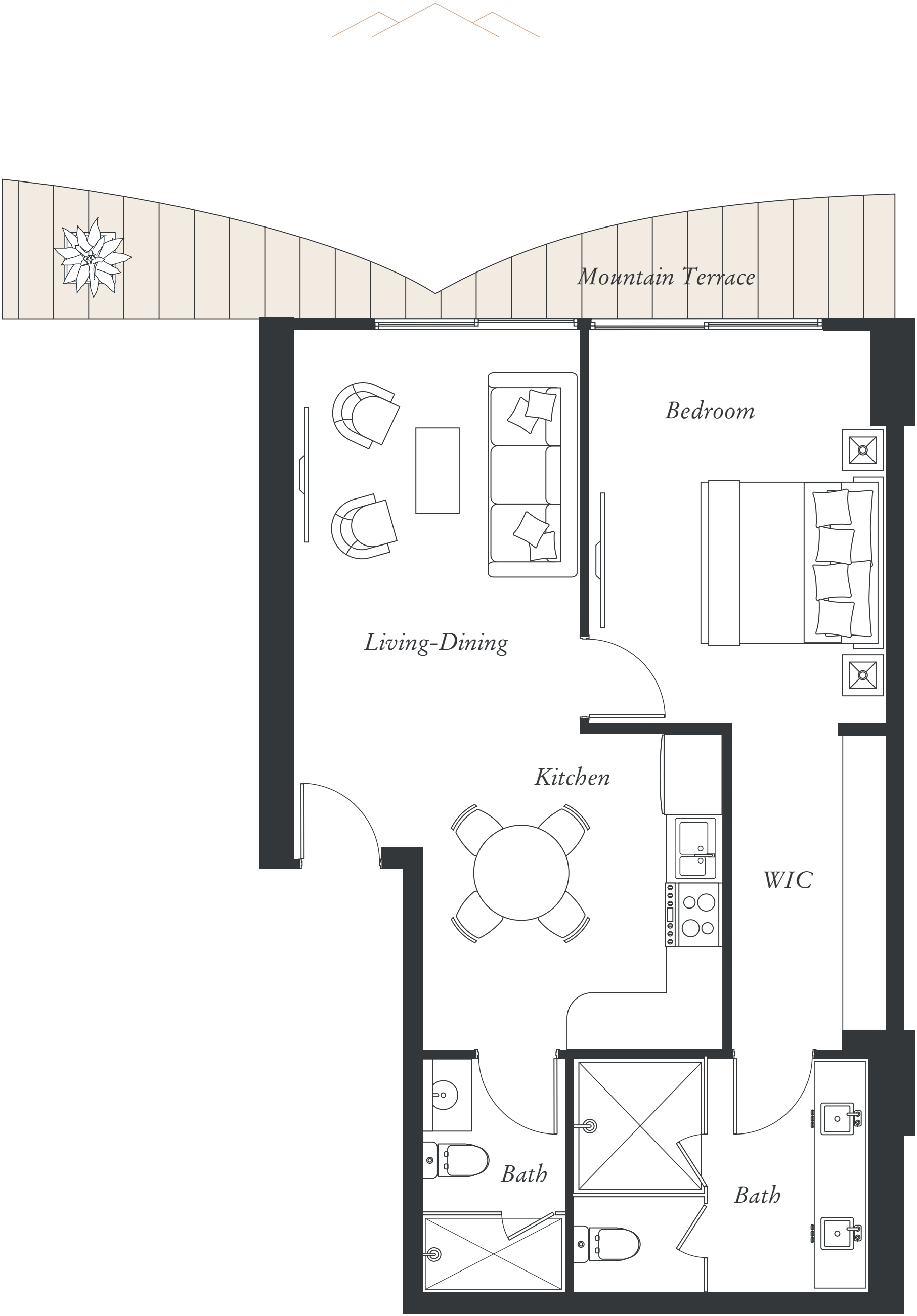
SPECIFICATIONS
ESPECIFICACIONES

1 BEDROOM / RECÁMARA
2 BATHROOMS / BAÑOS

AC AREA / INTERIOR
759 FT² / 70 M²

TERRACE / BALCÓN
118 FT² / 11 M²

TOTAL AREA / ÁREA TOTAL
877 FT² / 81 M²



*TERRACES MAY VARY UNIT BY UNIT AND BY FLOOR
*UNIT DIMENSIONS ARE APPROXIMATE AND BASED ON CURRENT PLANS.

ThompsonVallarta.com



The dimensions stated are measured based on the boundaries of the exterior walls and the centerline of the common inner walls and may vary from the dimensions that would be determined using the description and definition of "Unit," used by the Developer in construction which generally only includes the interior airspace between the perimeter walls and excludes interior structural components. Note that the measurements of the rooms set out in this plan are usually taken at the largest points of each one of the rooms (as if the room were a perfect rectangle), without accounting for cutouts. Consequently, the actual room area will typically be less than the product obtained by multiplying the indicated length by the width. All dimensions are approximate and vary with actual construction and all floors and development plans are subject to change. Renderings depict furnishings not included with purchase, but which may be available at an additional cost.. The layout of furniture is a suggestion and the uses of space shown are not guaranteed upon completion. Consult the Developer' prospectus to learn what is included with Unit purchase and to understand Unit dimensions. 2023 © Intercam Banco, S.A., I.B.M., Fideicomiso F/4736 with all rights reserved.🇲🇽