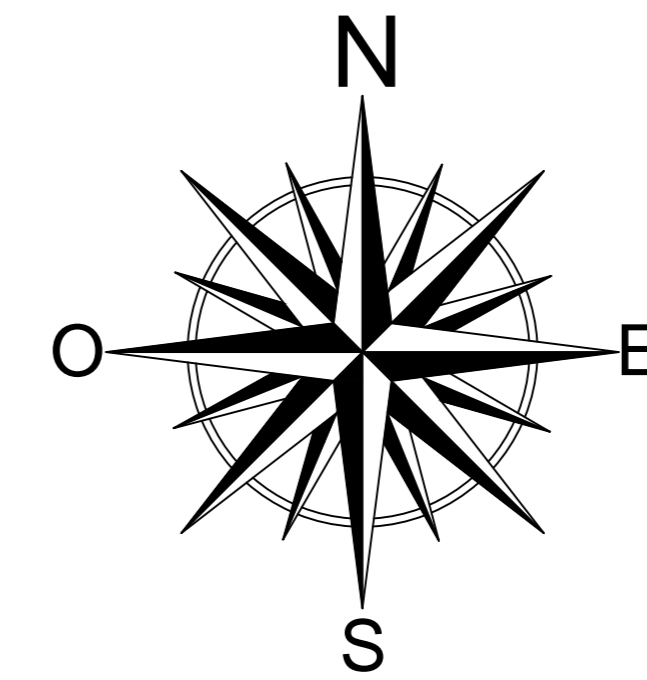
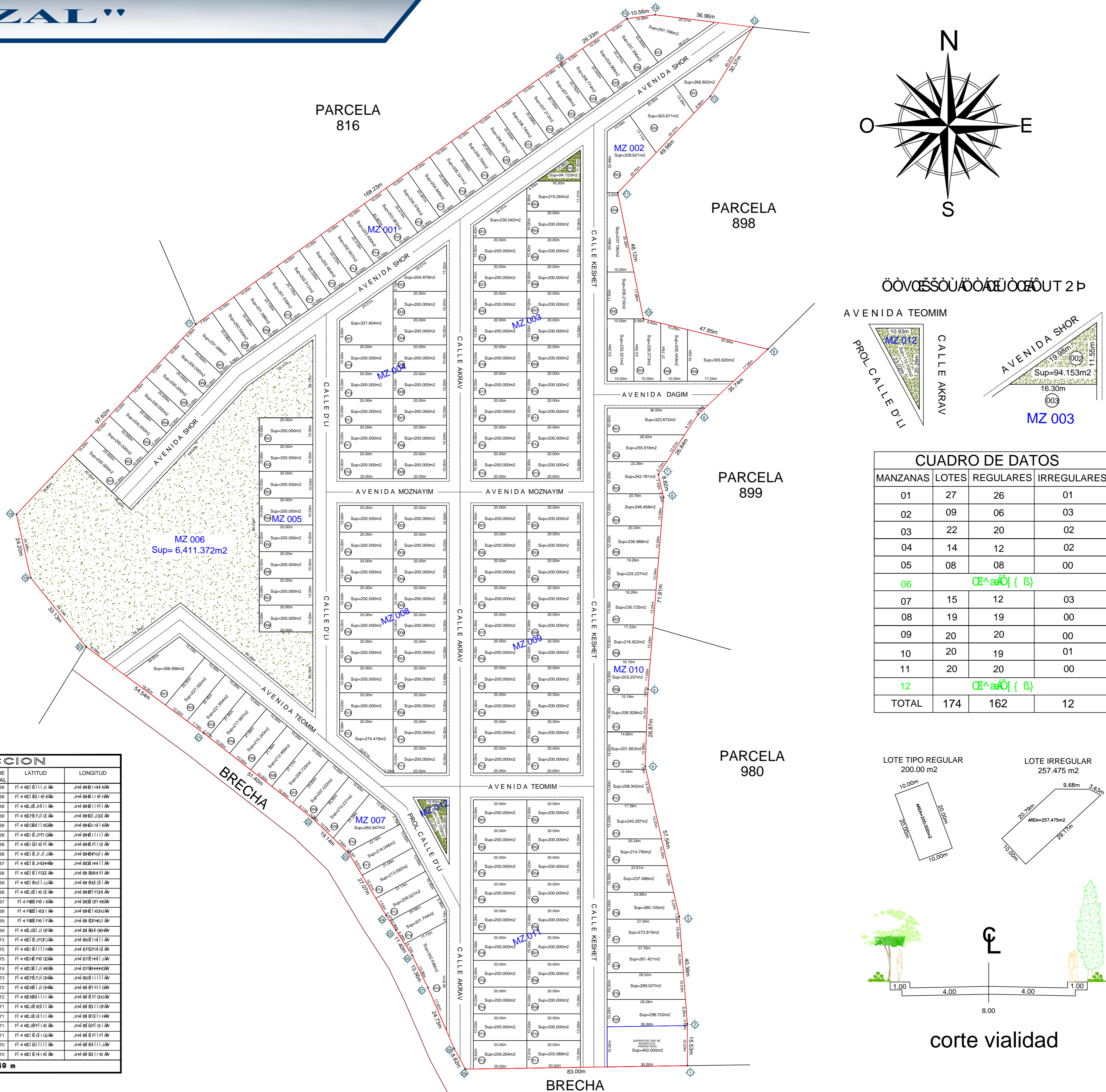
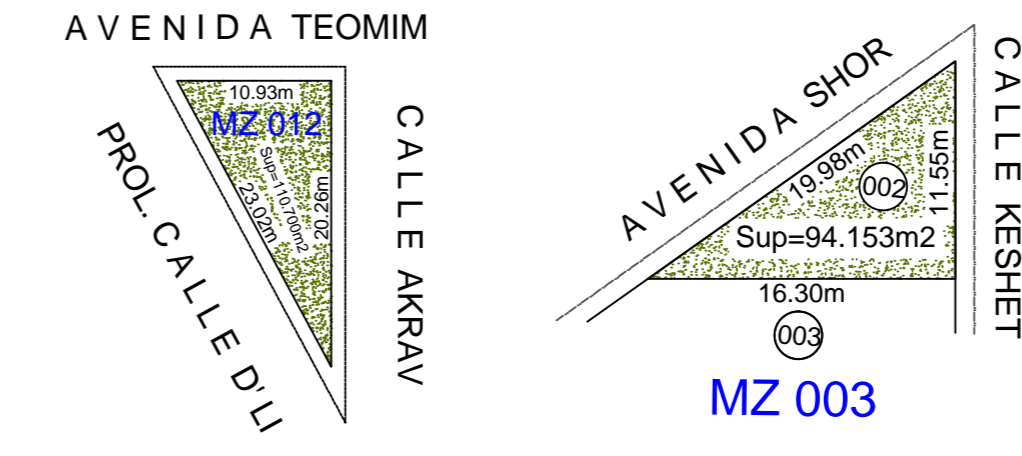


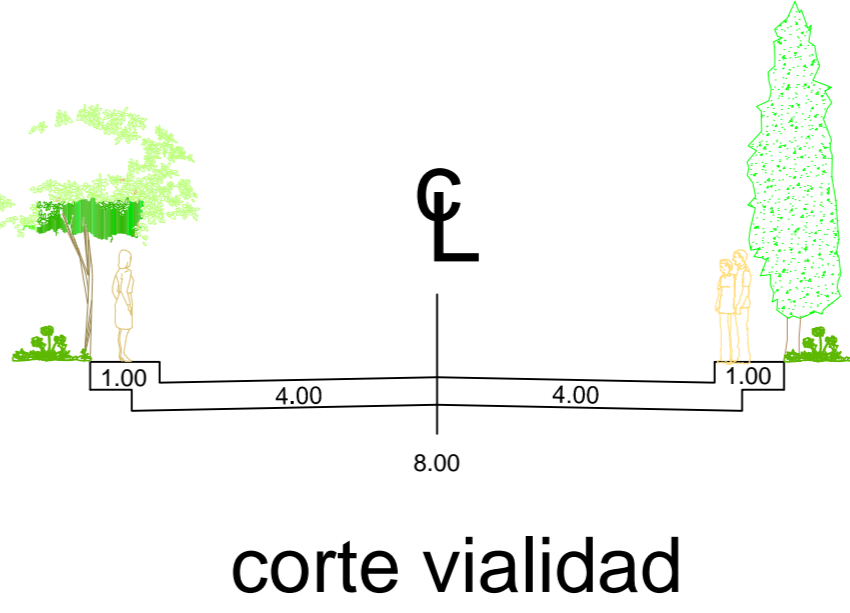
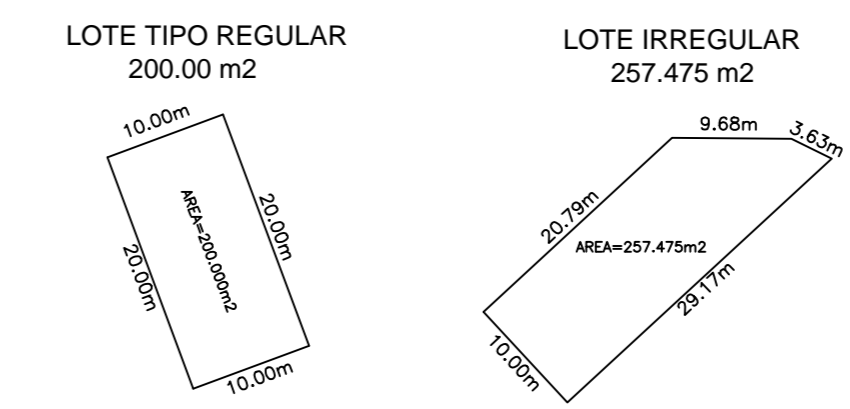
LOTES RUSTICOS "MAZAL"



00VASSOU/00AUEU00ZOUT 2 P



MANZANAS	LOTES	REGULARES	IRREGULARES
01	27	26	01
02	09	06	03
03	22	20	02
04	14	12	02
05	08	08	00
06		CE^a&0{ { B}	
07	15	12	03
08	19	19	00
09	20	20	00
10	20	19	01
11	20	20	00
12		CE^a&0{ { B}	
TOTAL	174	162	12



LADO EST-REV	AZIMUT	DISTANCIA	COORDENADAS UTM	CONVERGENCIA	FACTOR DE ESC. LINEAL	LATITUD	LONGITUD
1-2	H 1 4 1 C E J A	15.933	488.347.2668	1,844.151.9779	0.9990168	P 1 4 C E I I I J A	J H 0 E H I H G W
2-3	H 1 4 1 C E J A	40.360	488.347.2636	1,844.167.5106	0.9990168	P 1 4 C E I I C E G B	J H 0 E H I G H W
3-4	H 1 4 1 C E J A	57.542	488.344.1926	1,844.207.7542	0.9990168	P 1 4 C E I J I I A	J H 0 E H I F I A W
4-5	H 1 4 1 C E J A	28.872	488.331.4568	1,844.263.8691	0.9990168	P 1 4 C E I F J I G A	J H 0 E H J G S A W
5-6	H 1 4 1 C E J A	71.910	488.332.5228	1,844.292.7217	0.9990168	P 1 4 C E I H I C G A	J H 0 E H I G O W
6-7	H 1 4 1 C E J A	8.800	488.338.3763	1,844.364.3934	0.9990168	P 1 4 C E I J F I G B	J H 0 E H I I I A W
7-8	H 1 4 1 C E J A	26.844	488.336.3562	1,844.372.9792	0.9990168	P 1 4 C E I G H I A	J H 0 E H I F I A W
8-9	H 1 4 1 C E J A	35.738	488.351.2317	1,844.395.3244	0.9990168	P 1 4 C E I J I I A	J H 0 E H E F I A W
9-10	H 1 4 1 C E J A	47.852	488.377.3228	1,844.419.7472	0.9990167	P 1 4 C E I I G J A	J H 0 E H H I I A W
10-11	H 1 4 1 C E J A	48.123	488.330.8321	1,844.431.0805	0.9990168	P 1 4 C E I F I G S A	J H 0 E S E H F I A W
11-12	H 1 4 1 C E J A	49.977	488.321.2370	1,844.478.2375	0.9990169	P 1 4 C E I I I J A	J H 0 E H G I G A W
12-13	H 1 4 1 C E J A	30.367	488.355.8204	1,844.514.3159	0.9990168	P 1 4 C E I I F G A	J H 0 E H F I A W
13-14	H 1 4 1 C E J A	36.969	488.371.8110	1,844.540.1315	0.9990167	P 1 4 C E I F I I A	J H 0 E H F I A W
14-15	H 1 4 1 C E J A	10.362	488.335.1949	1,844.544.7426	0.9990168	P 1 4 C E I F I G A	J H 0 E H I G S A W
15-16	H 1 4 1 C E J A	29.334	488.334.6837	1,844.543.2168	0.9990169	P 1 4 C E I F I I A	J H 0 E H I G S A W
16-17	H 1 4 1 C E J A	168.227	488.300.2998	1,844.526.9171	0.9990168	P 1 4 C E I H I C G A	J H 0 E H I G S A W
17-18	H 1 4 1 C E J A	97.620	488.163.4878	1,844.429.0217	0.9990173	P 1 4 C E I J F I G A	J H 0 E H I I I A W
18-19	H 1 4 1 C E J A	24.198	488.096.5149	1,844.357.9885	0.9990175	P 1 4 C E I I I I A	J H 0 E H I G S A W
19-20	H 1 4 1 C E J A	33.131	488.101.8312	1,844.334.3916	0.9990175	P 1 4 C E I F I G A	J H 0 E H I I I A W
20-21	H 1 4 1 C E J A	54.536	488.122.5590	1,844.308.5461	0.9990174	P 1 4 C E I F I G A	J H 0 E H I I I A W
21-22	H 1 4 1 C E J A	51.997	488.166.5067	1,844.276.2548	0.9990173	P 1 4 C E I F I G A	J H 0 E H I I I A W
22-23	H 1 4 1 C E J A	19.139	488.206.9675	1,844.244.5850	0.9990172	P 1 4 C E I J I G A	J H 0 E H I I I A W
23-24	H 1 4 1 C E J A	27.070	488.220.7887	1,844.231.3350	0.9990172	P 1 4 C E I I I I A	J H 0 E H I G S A W
24-25	H 1 4 1 C E J A	6.423	488.234.6787	1,844.268.0901	0.9990171	P 1 4 C E I H I C G A	J H 0 E H I I I A W
25-26	H 1 4 1 C E J A	11.389	488.238.2351	1,844.202.7411	0.9990171	P 1 4 C E I I I I A	J H 0 E H I I I A W
26-27	H 1 4 1 C E J A	13.364	488.244.4316	1,844.193.1758	0.9990171	P 1 4 C E I F I G A	J H 0 E H I I I A W
27-28	H 1 4 1 C E J A	24.731	488.250.2782	1,844.181.1566	0.9990171	P 1 4 C E I I I I A	J H 0 E H I I I A W
28-29	H 1 4 1 C E J A	8.816	488.260.0914	1,844.158.4561	0.9990170	P 1 4 C E I I I I A	J H 0 E H I I I A W
29-1	H 1 4 1 C E J A	83.000	488.264.2767	1,844.150.8965	0.9990170	P 1 4 C E I H I C G A	J H 0 E H I I I A W

SAJ A O A E S A Z A C E O A A P



DATOS DEL PROYECTO

MZ 001-----	Numero de Manzana.
001-----	Numero de Lote.
Sup=216.53m2-----	Superficie en metros cuadrados.
16.20m-----	Longitud en metros.
5-----	Numero de vertice del poligono.

POLIGONO:	58,521.059m2
VIALIDADES:	14,412.891m2
MANZANAS:	44,108.169m2
AREA COMUN:	6,616.225m2

OBSERVACIONES
 PROYECCION: UTM
 ELIPSOIDE: WGS84
 Esc. 1:100
 10.0m 30.0m 50.0m

TIPO DE PLANO:
PLANO LOTIFICACION
 No DE PLANO-
T-4
 ESCALA 1:800
 ACOT: METROS
 FECHA: MARZO/2025

DATOS DEL PREDIO
 DENOMINADO: **LOTES RUSTICOS "MAZAL".**
 PROPIETARIO: **EMIR ANAI MORALES MACAL**
 W O O O O P K **AREA SUBURBANA, COL. COPOYA.**
 MUNICIPIO: **TUXTLA GUTIERREZ, CHIAPAS.**
 ESTADO: **CHIAPAS.**
 ELABORO: **00UT U A O U S C P O U P P O O Z E**
 CED. PROF. 6621636