

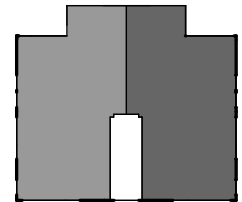
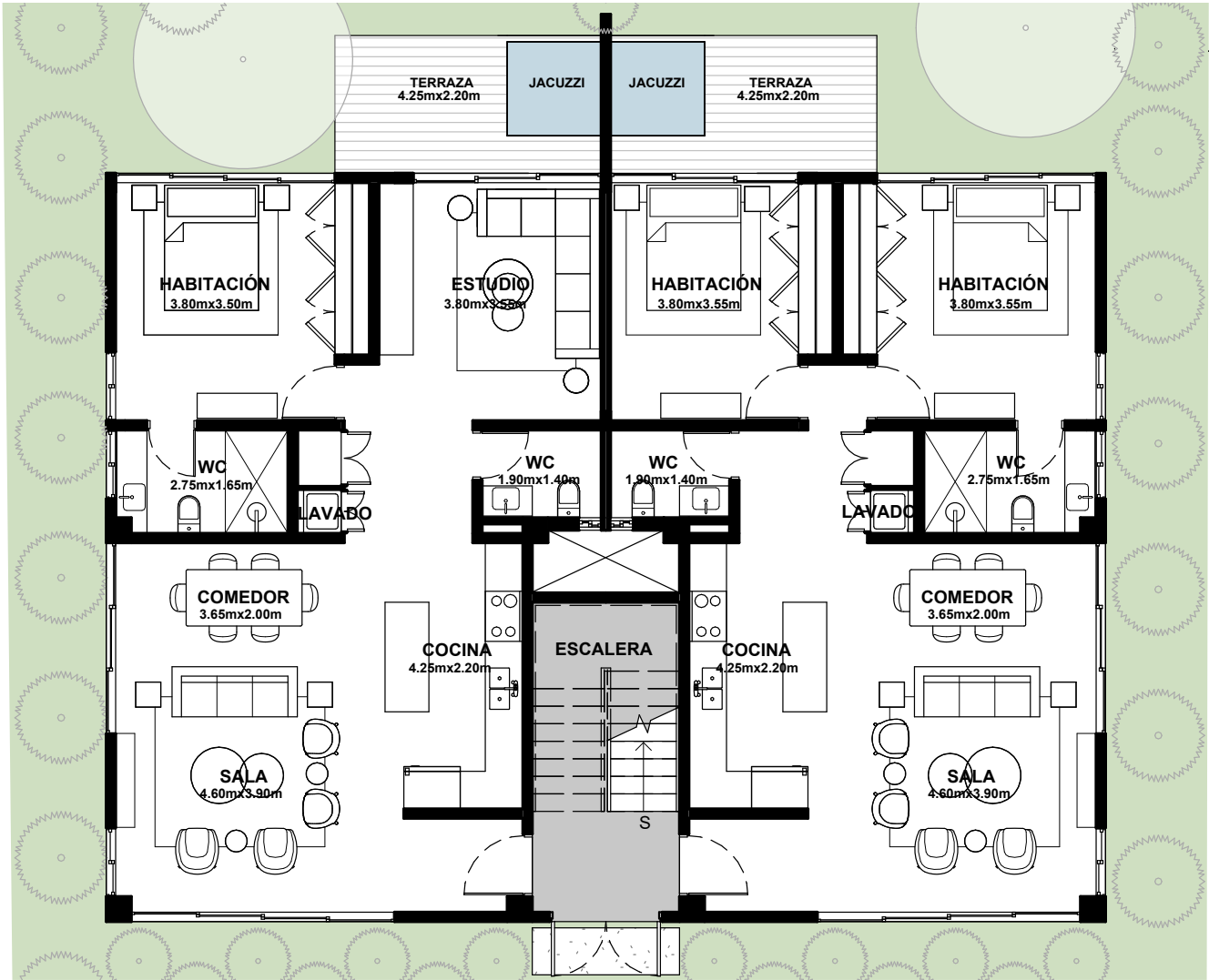


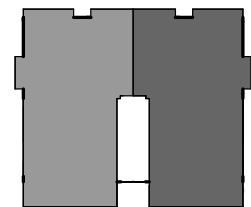
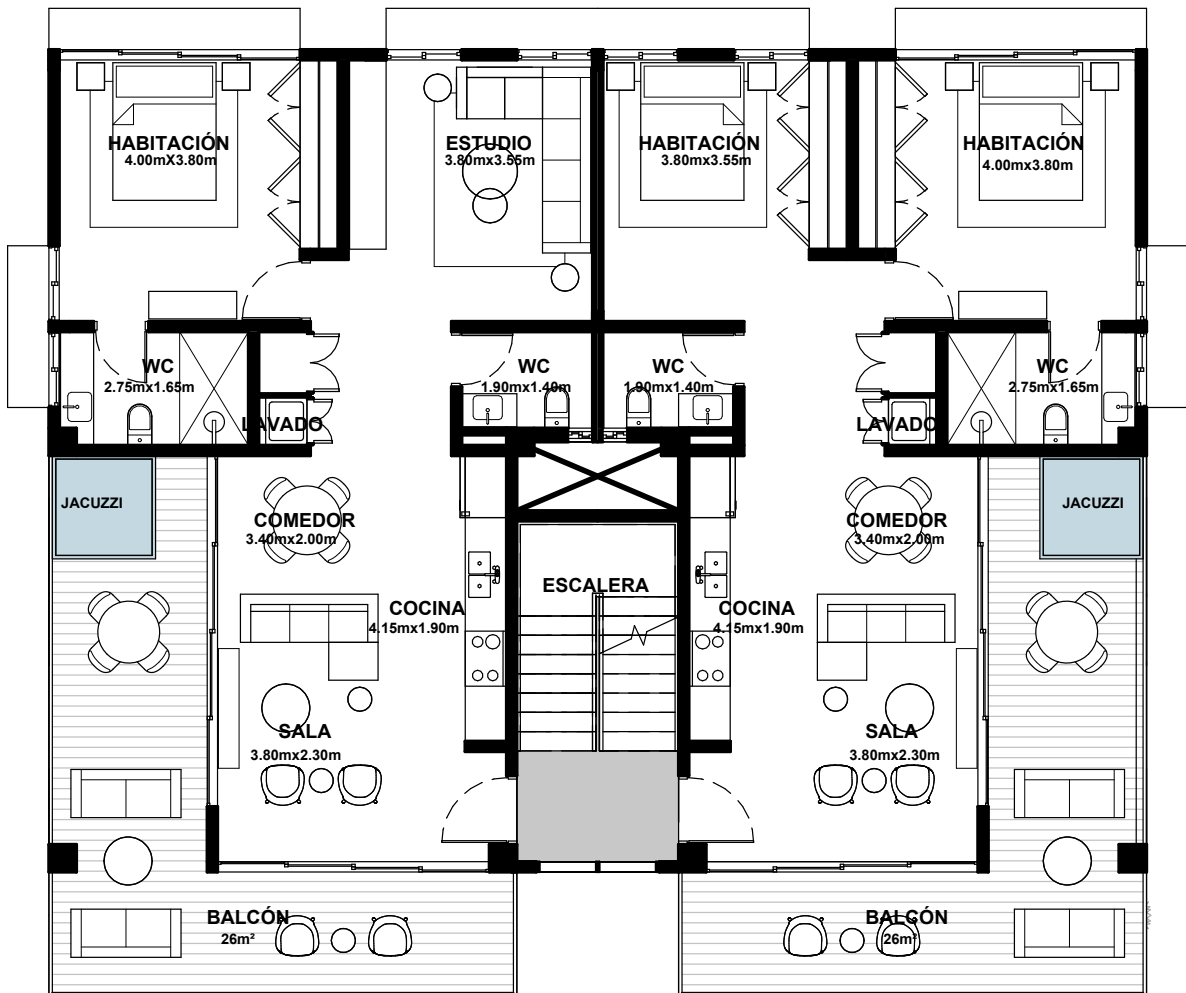
809.375.3851
INFO@A20ARQUITECTOS.COM
A20ARQUITECTOS.COM

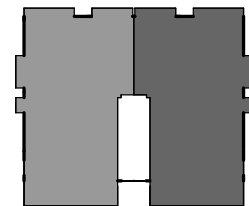
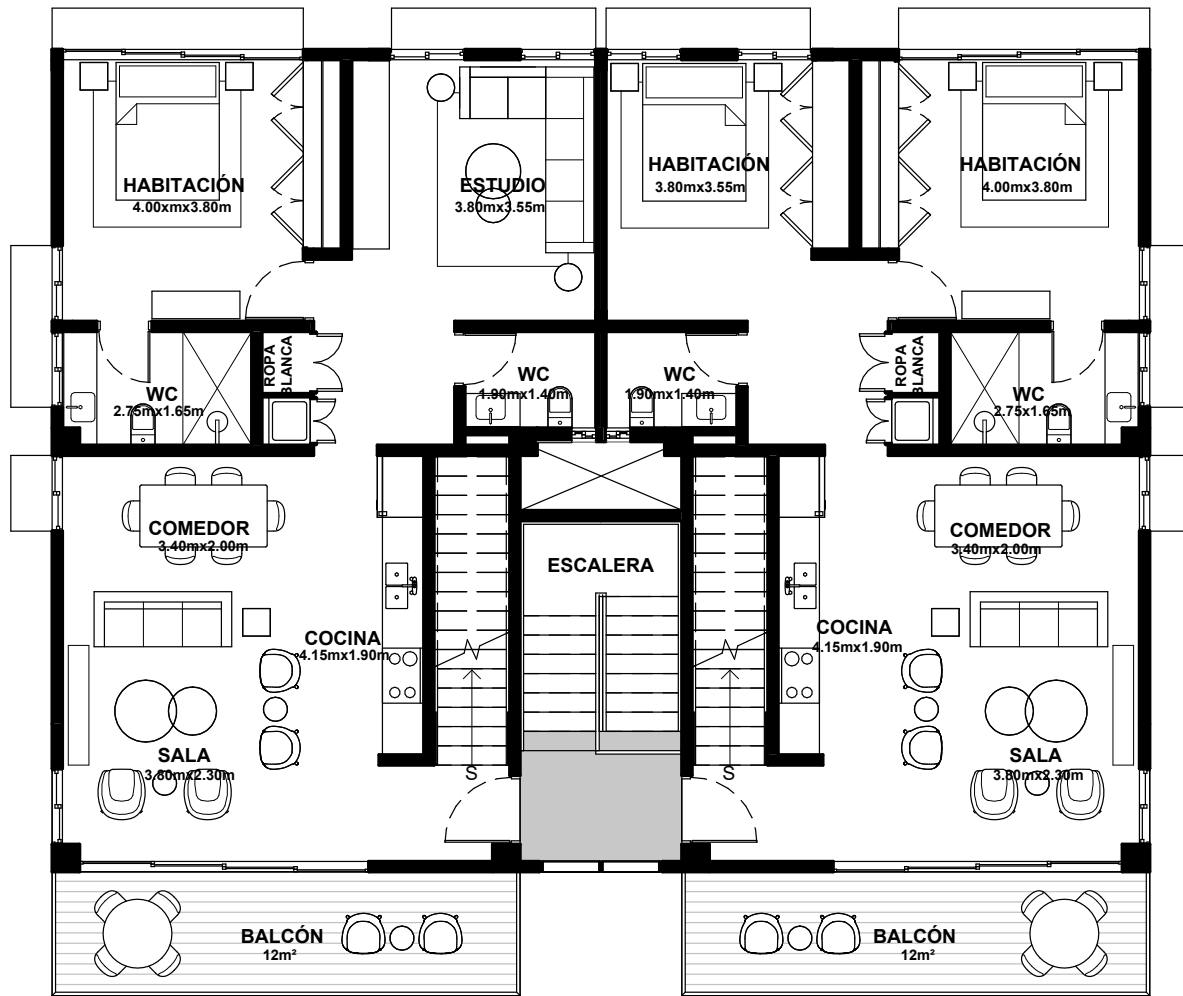
AV. LOS PROCERES #38, DIAMOND PLAZA
PRIMER NIVEL, LOCAL A-09
SANTO DOMINGO, DN
REPÚBLICA DOMINICANA

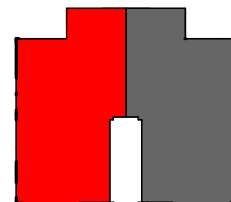
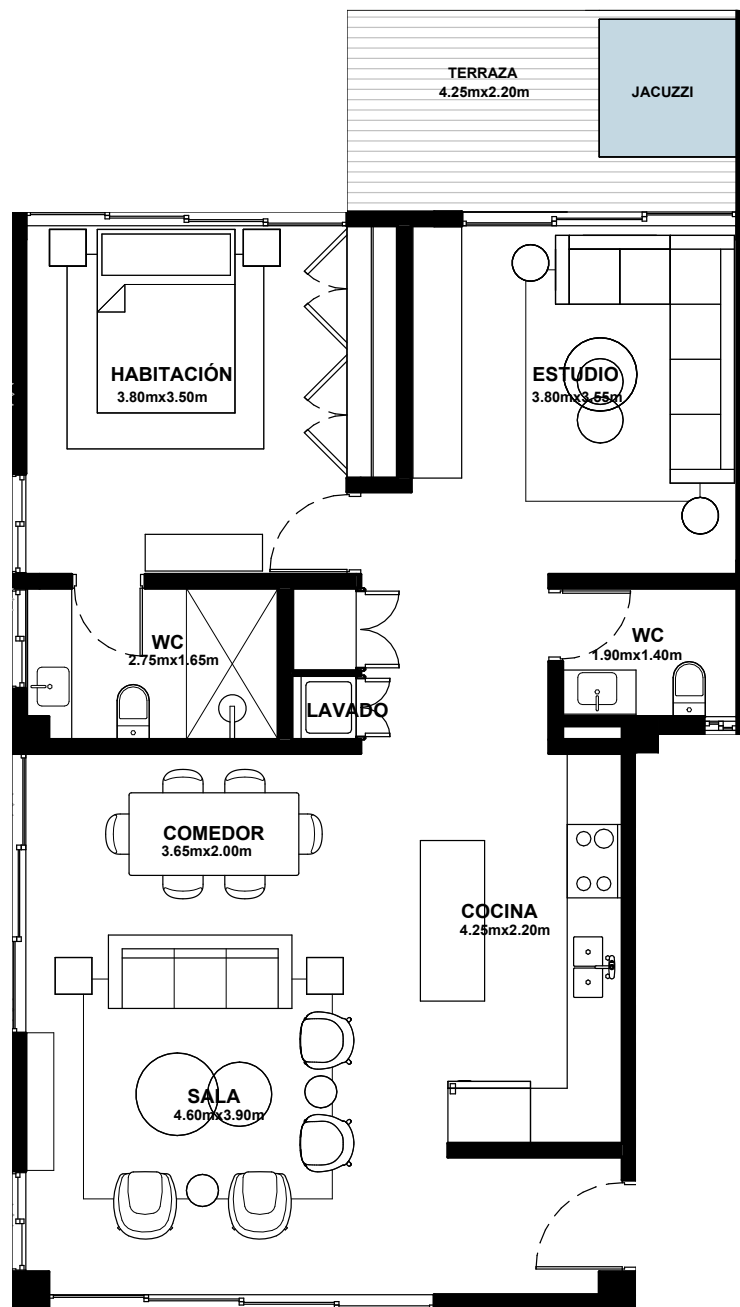
MARINA RESIDENCES

Set de Plantas de Apartamentos









A20
ARQUITECTOS

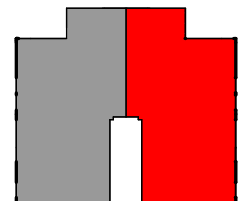
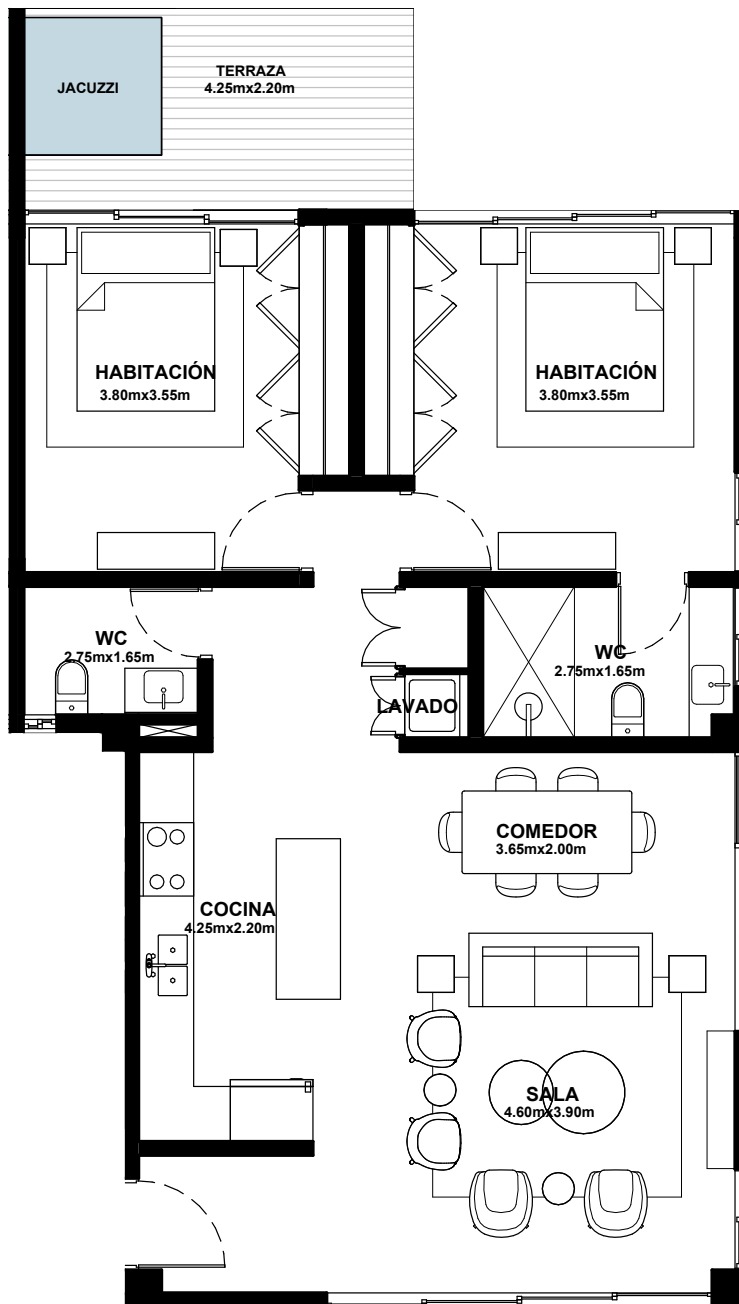
809.375.3851
INFO@A20ARQUITECTOS.COM
A20ARQUITECTOS.COM

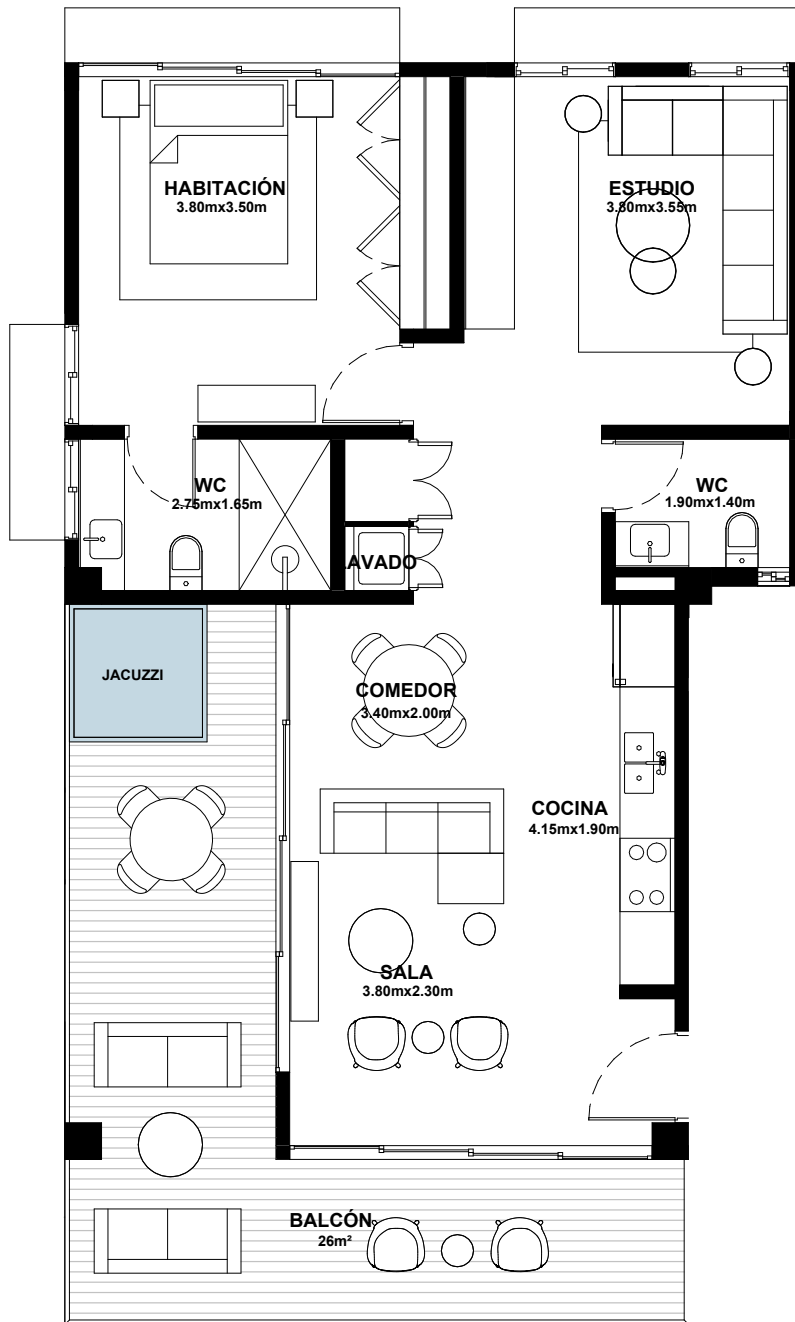
MARG. NUÑEZ DE CACERES, CORPORATIVO NC
SEXTO NIVEL, LOCAL 601
SANTO DOMINGO, DV
REPÚBLICA DOMINICANA

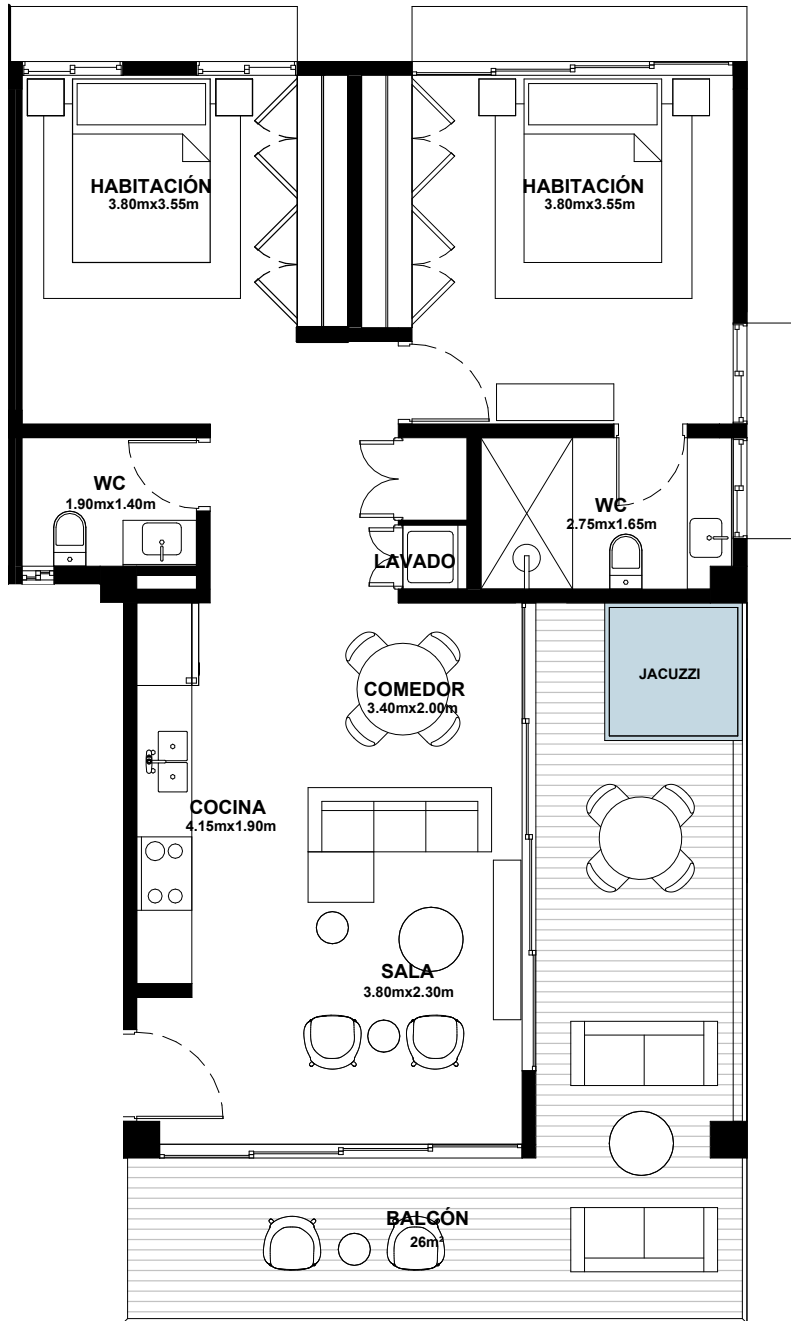


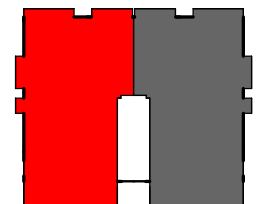
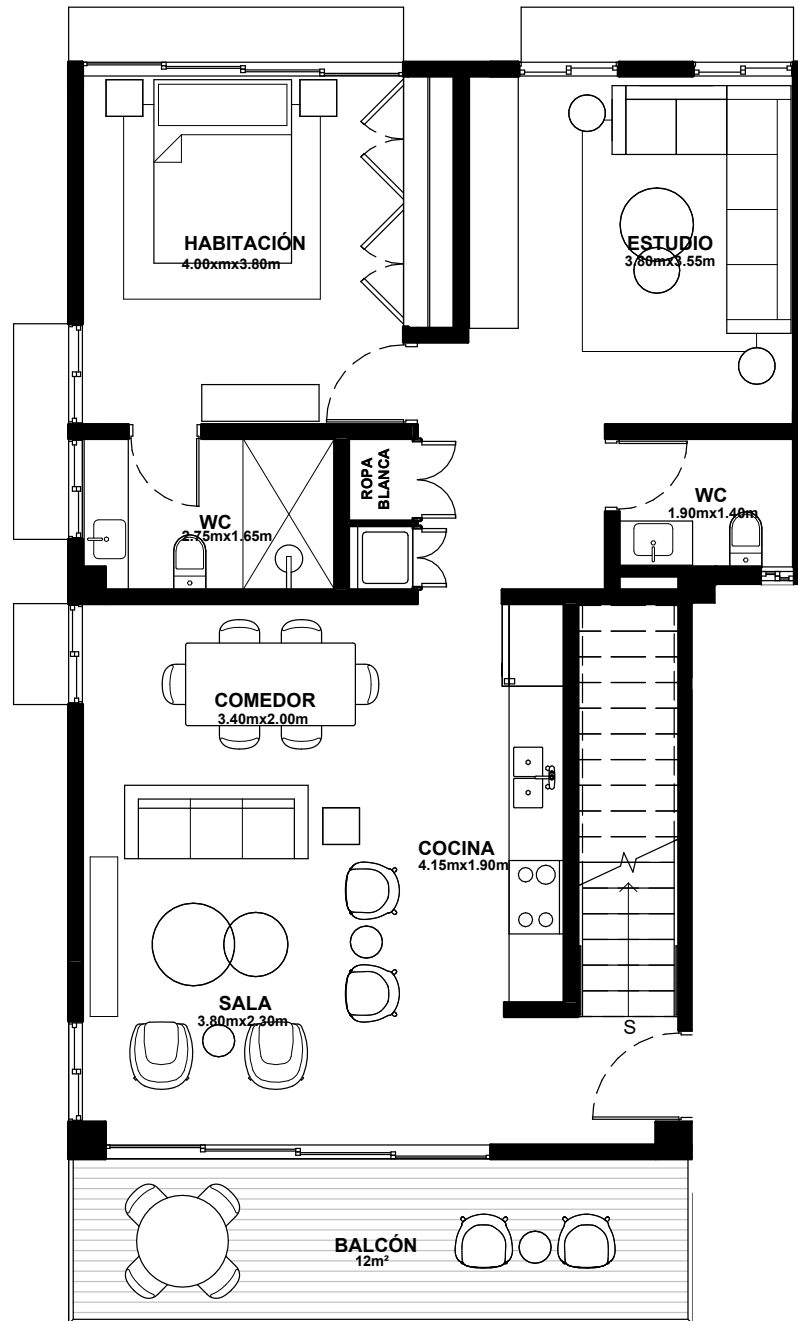
Apartamento Tipo A (1 Habitación + Estudio - 97m²)

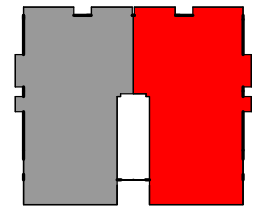
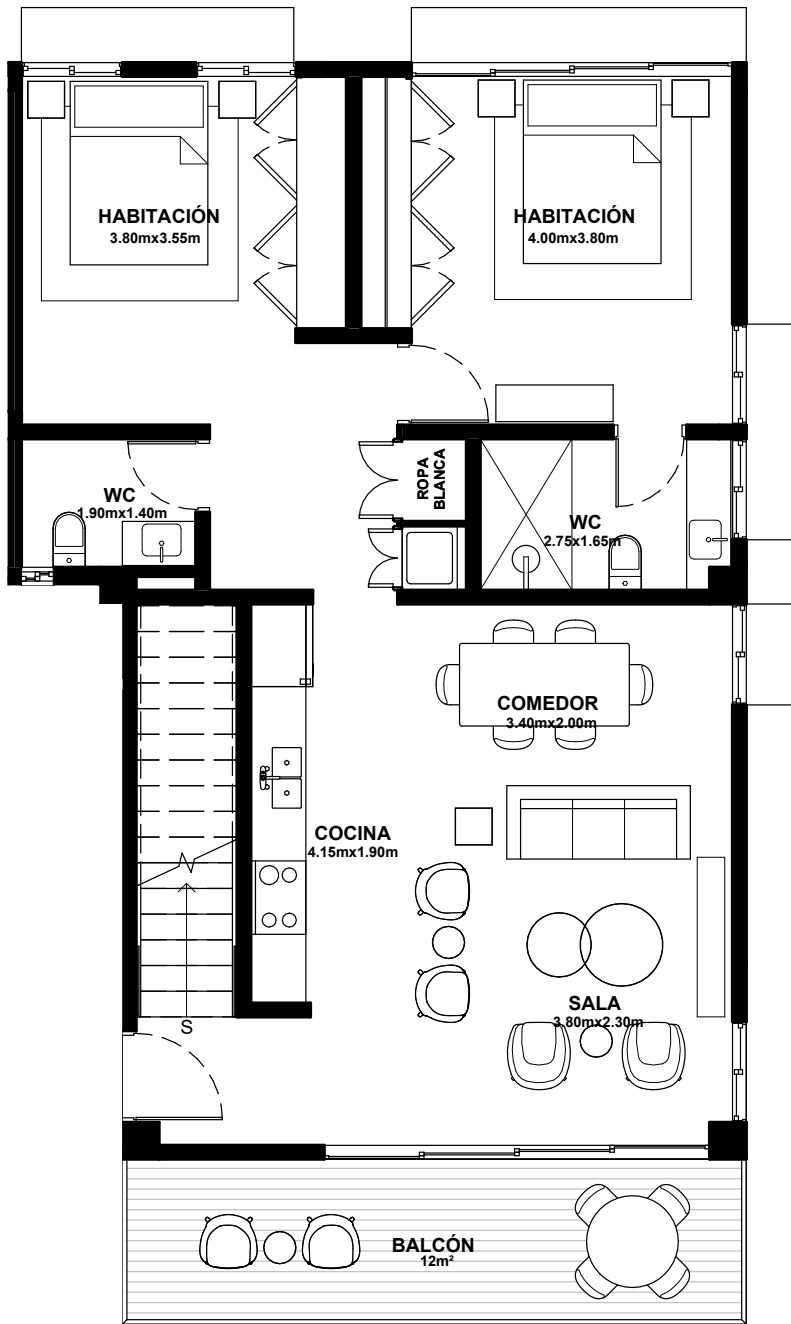
As indicated











A20
ARQUITECTOS

809.375.3851
INFO@A20ARQUITECTOS.COM
A20ARQUITECTOS.COM

MARG. NUÑEZ DE CACERES, CORPORATIVO NC
SEXTO NIVEL, LOCAL 601
SANTO DOMINGO, DV
REPÚBLICA DOMINICANA



Apartamento Tipo C (2 Habitaciones - 100m²)

As indicated

