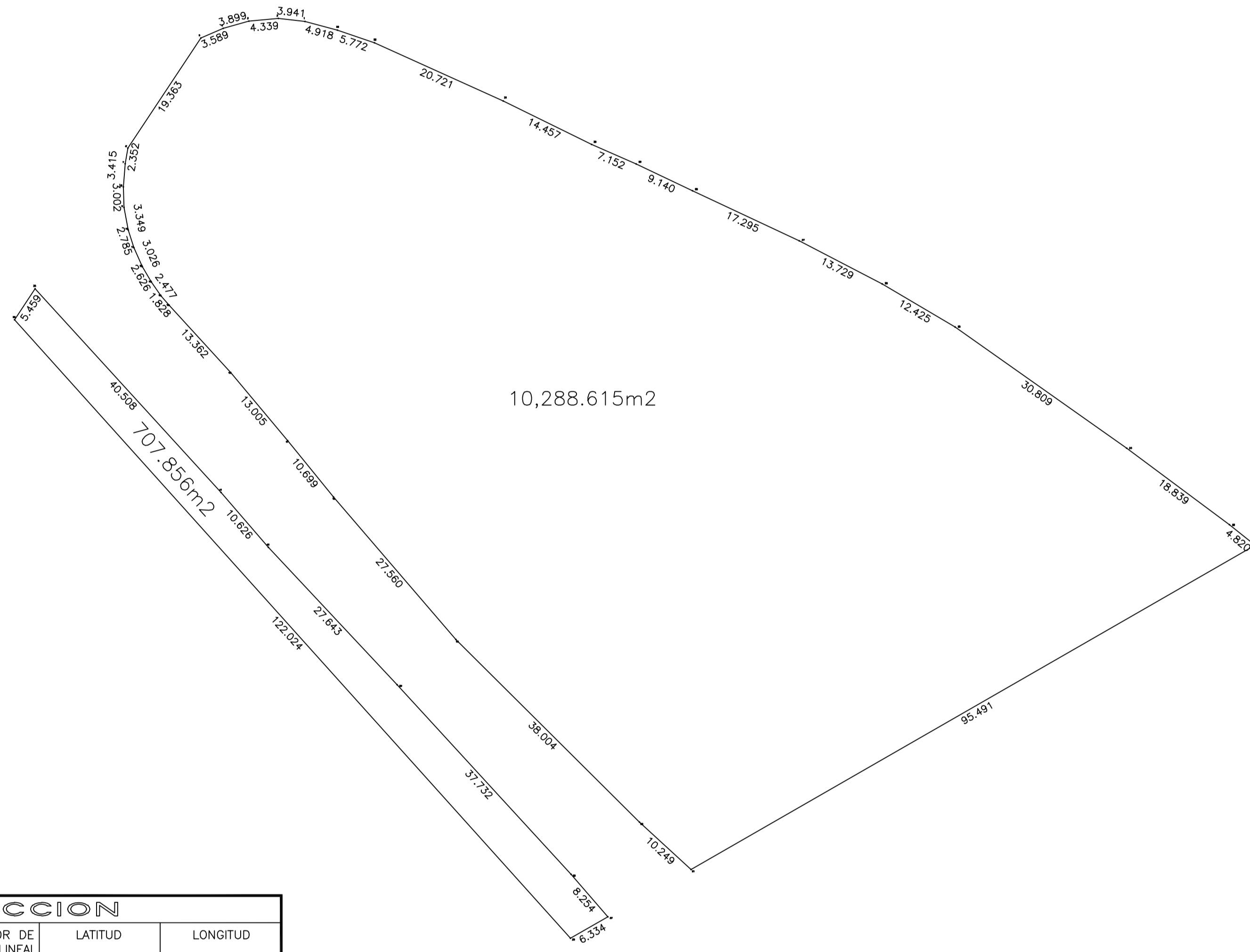


LEVANTAMIENTO FISICOTAB. 33622



CUADRO DE CONSTRUCCION								
LADO EST-PV	AZIMUT	DISTANCIA (MTS.)	COORDENADAS UTM		CONVERGENCIA	FACTOR DE ESC. LINEAL	LATITUD	LONGITUD
			ESTE (X)	NORTE (Y)				
34-35	213°22'24.12"	5.459	220,014.4473	2,322,377.6088	-0°57'53.442734"	1.00056888	20°58'50.807804" N	89°41'34.529229" W
35-36	138°33'37.44"	122.024	220,011.4444	2,322,373.0501	-0°57'53.472476"	1.00056890	20°58'50.658038" N	89°41'34.630461" W
36-37	67°18'48.04"	6.334	220,092.9989	2,322,282.2824	-0°57'52.313796"	1.00056833	20°58'47.753407" N	89°41'31.758120" W
37-38	318°48'50.12"	8.254	220,098.5011	2,322,285.4192	-0°57'52.250768"	1.00056830	20°58'47.658337" N	89°41'31.567501" W
38-39	317°30'8.60"	37.732	220,083.0818	2,322,291.6281	-0°57'52.328296"	1.00056833	20°58'48.057105" N	89°41'31.793382" W
39-40	318°52'32.58"	27.843	220,087.5717	2,322,319.4481	-0°57'52.689540"	1.00056851	20°58'48.947096" N	89°41'32.657448" W
40-41	319°13'28.20"	10.826	220,048.6751	2,322,338.8243	-0°57'52.958613"	1.00056864	20°58'49.592329" N	89°41'33.322950" W
41-34	317°39'4.20"	40.508	220,041.7355	2,322,347.6707	-0°57'53.055736"	1.00056869	20°58'49.849978" N	89°41'33.567720" W
		AREA = 707.856 m2	PERIMETRO = 258.580 m					

CUADRO DE CONSTRUCCION

LADO EST-PV	AZIMUT	DISTANCIA (METS.)	COORDENADAS UTM		CONVERGENCIA	FACTOR DE ESC. LINEAL
			ESTE (X)	NORTE (Y)		
1-2	276°12'5.50"	3.941	220,054.0314	2,322,416.8406	-0°57'53.016539"	1.00056833
2-3	264°46'11.68"	4.339	220,050.1134	2,322,417.2663	-0°57'53.065770"	1.00056833
3-4	254°29'53.86"	3.899	220,045.7925	2,322,416.8708	-0°57'53.118650"	1.00056833
4-5	246°38'33.71"	3.589	220,042.0351	2,322,415.8287	-0°57'53.163492"	1.00056833
5-6	213°30'25.75"	19.363	220,038.7400	2,322,414.4056	-0°57'53.201985"	1.00056833
6-7	189°50'14.38"	2.352	220,028.0508	2,322,398.2605	-0°57'53.307995"	1.00056833
7-8	184°13'14.49"	3.415	220,027.6490	2,322,395.9435	-0°57'53.309182"	1.00056833
8-9	177°58'12.85"	3.002	220,027.3977	2,322,392.5373	-0°57'53.306725"	1.00056833
9-10	169°51'2.46"	3.349	220,027.5040	2,322,389.5371	-0°57'53.300501"	1.00056833
10-11	162°7'8.23"	2.785	220,028.0942	2,322,386.2403	-0°57'53.287798"	1.00056833
11-12	155°54'13.58"	3.026	220,028.9493	2,322,383.5898	-0°57'53.272870"	1.00056833
12-13	149°51'33.25"	2.626	220,030.1849	2,322,380.8272	-0°57'53.253046"	1.00056833
13-14	144°24'10.46"	2.477	220,031.5032	2,322,378.5565	-0°57'53.233001"	1.00056833
14-15	139°47'59.44"	1.828	220,032.9449	2,322,376.5426	-0°57'53.211848"	1.00056833
15-16	137°26'50.38"	13.362	220,034.1249	2,322,375.1463	-0°57'53.194948"	1.00056833
16-17	140°11'36.09"	13.005	220,043.1611	2,322,365.3032	-0°57'53.066913"	1.00056833
17-18	140°49'37.54"	10.699	220,051.4870	2,322,355.3125	-0°57'52.947437"	1.00056833
18-19	139°24'50.86"	27.560	220,058.2453	2,322,347.0180	-0°57'52.850154"	1.00056833
19-20	134°48'48.00"	38.004	220,076.1757	2,322,326.0878	-0°57'52.593817"	1.00056833
20-21	132°38'35.97"	10.249	220,103.1359	2,322,299.3027	-0°57'52.216057"	1.00056833
21-22	60°7'3.79"	95.491	220,110.6752	2,322,292.3594	-0°57'52.111313"	1.00056833
22-23	308°39'30.17"	4.820	220,193.4704	2,322,339.9347	-0°57'51.163480"	1.00056833
23-24	306°42'22.58"	18.839	220,189.7068	2,322,342.9454	-0°57'51.215023"	1.00056833
24-25	305°12'46.35"	30.809	220,174.6034	2,322,354.2057	-0°57'51.420522"	1.00056833
25-26	300°40'56.82"	12.425	220,149.4322	2,322,371.9705	-0°57'51.761372"	1.00056833
26-27	297°22'39.68"	13.729	220,138.7468	2,322,378.3106	-0°57'51.904104"	1.00056833
27-28	295°9'0.15"	17.295	220,126.5554	2,322,384.6240	-0°57'52.065449"	1.00056833
28-29	295°34'52.70"	9.140	220,110.8998	2,322,391.9743	-0°57'52.271403"	1.00056833
29-30	293°34'48.74"	7.152	220,102.6555	2,322,395.9210	-0°57'52.379985"	1.00056833
30-31	296°13'18.93"	14.457	220,096.1003	2,322,398.7822	-0°57'52.465867"	1.00056833
31-32	294°14'11.11"	20.721	220,083.1307	2,322,405.1702	-0°57'52.636977"	1.00056833
32-33	289°2'55.69"	5.772	220,064.2359	2,322,413.6763	-0°57'52.884952"	1.00056833
33-1	285°5'26.21"	4.918	220,058.7797	2,322,415.5602	-0°57'52.955624"	1.00056833
		AREA = 10,288.615 m2	PERIMETRO = 421.580 m			