

61.96

Bodega

2.800 M2

6.50

14.25

6.30

48.36

53.57

9.47

46.85

PATIO DE MANIOBRAS
1987.26 M2

TABLA DE SUPERFICIES	
Bodega	2800.00 M2
Patio de maniobras	1987.26 M2
Planta Baja	589.85 m2
Planta Alta	460.25 m2
Area Total	5 837.36 m2

24.95

17.85

10.52

Torre de Vigilancia

4.60

Acceso

27.80

13.00

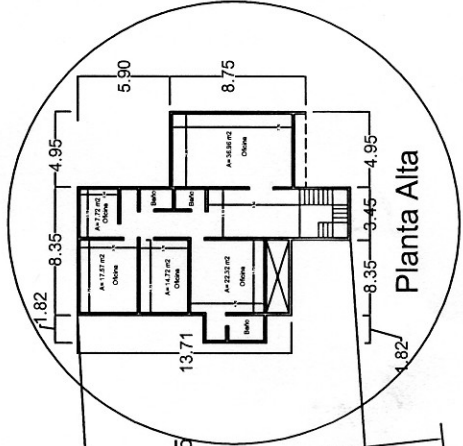
Estacionamiento

43.25

33.35

17.00

Basurero



Planta Alta

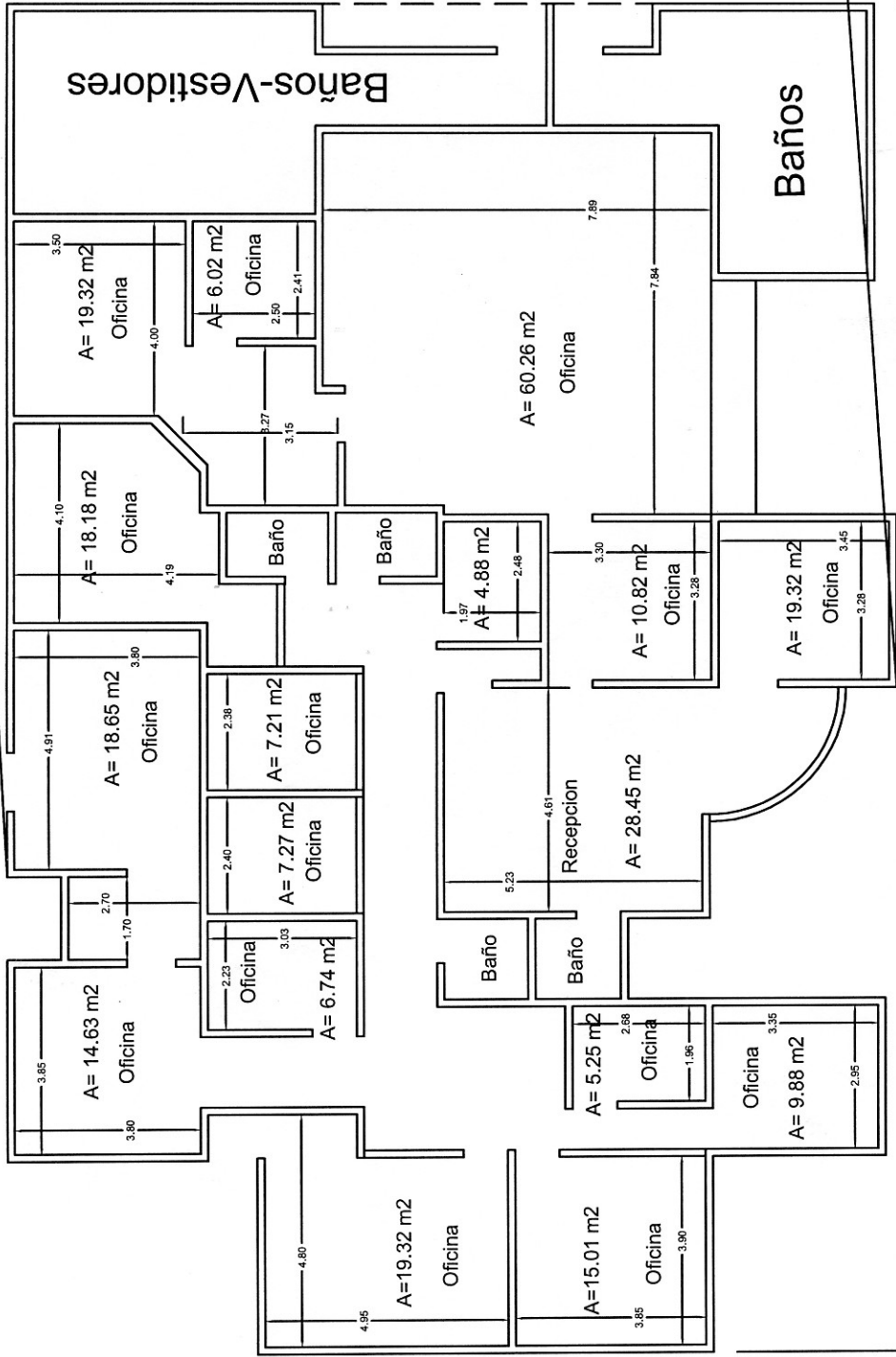
24.95

17.00

Basu

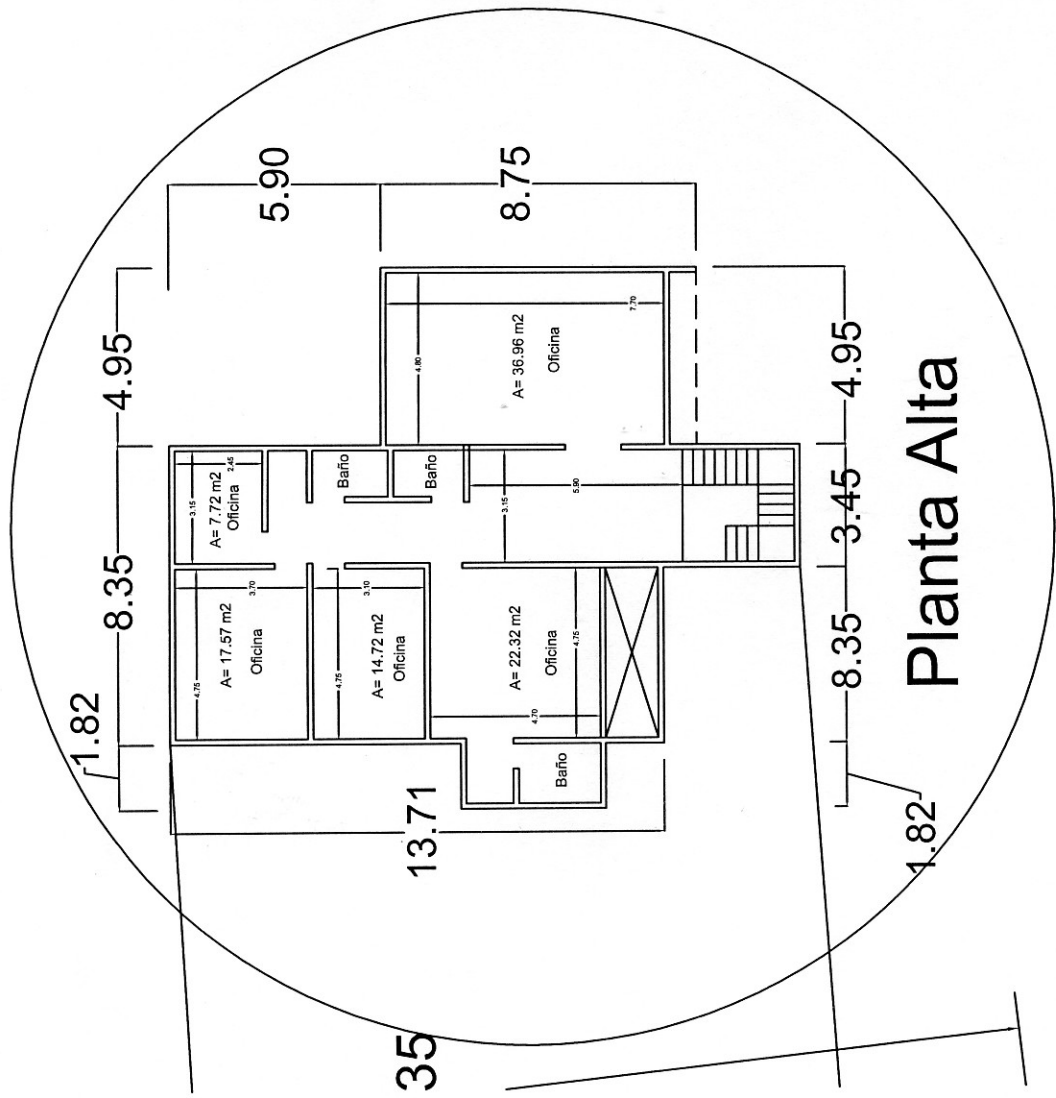
Baños-Vestidores

Baños



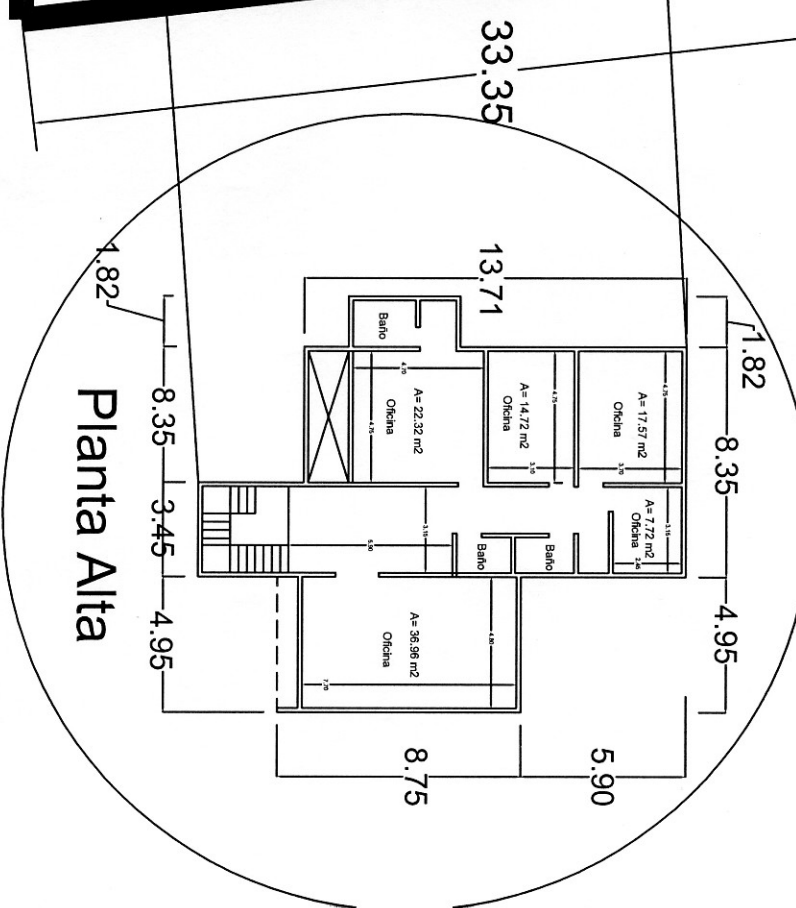
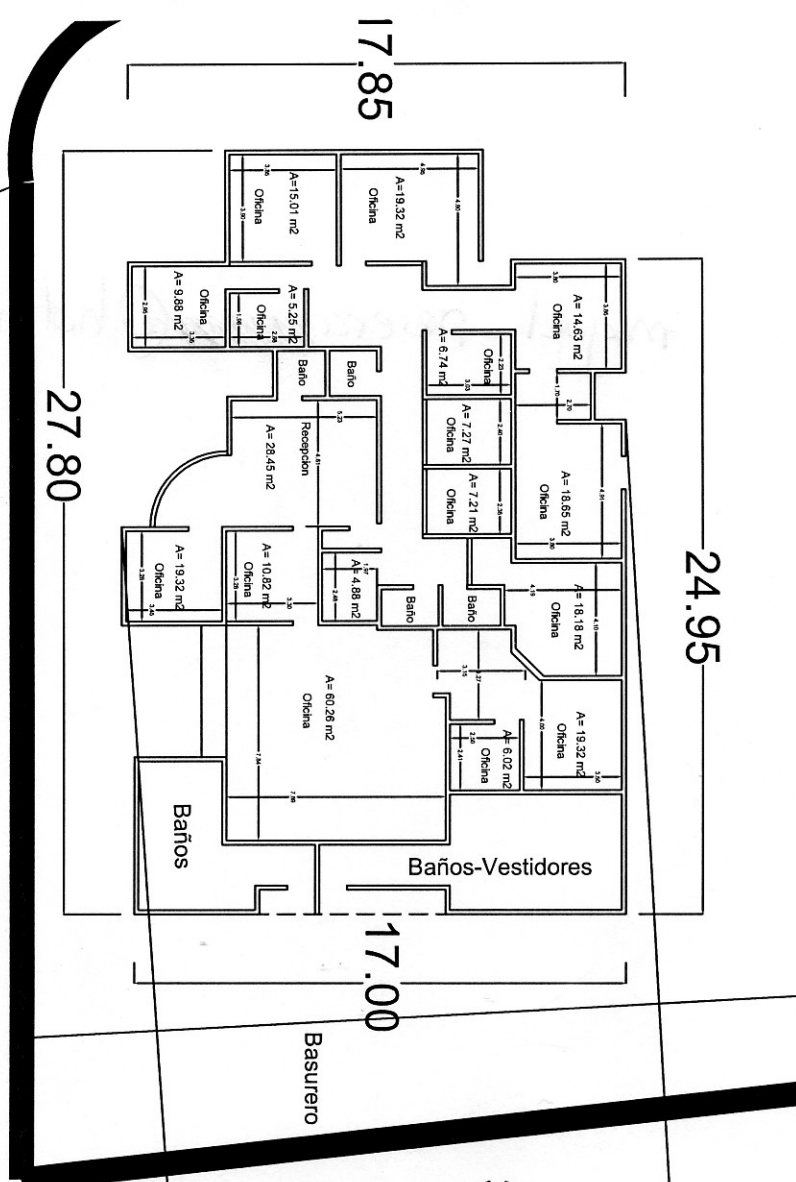
17.85

27.80



Planta Alta

35



Planta Alta