

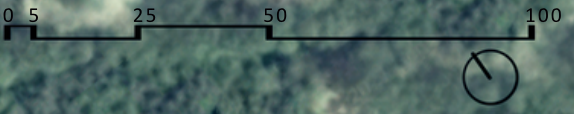


Edificio E

Edificio D

Edificio C

4 unidades liberadas 2 y 3 Rec | Frente a canal **CC-101** | **DB-301** | **ED-101** | **EE-402**

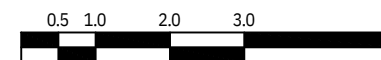


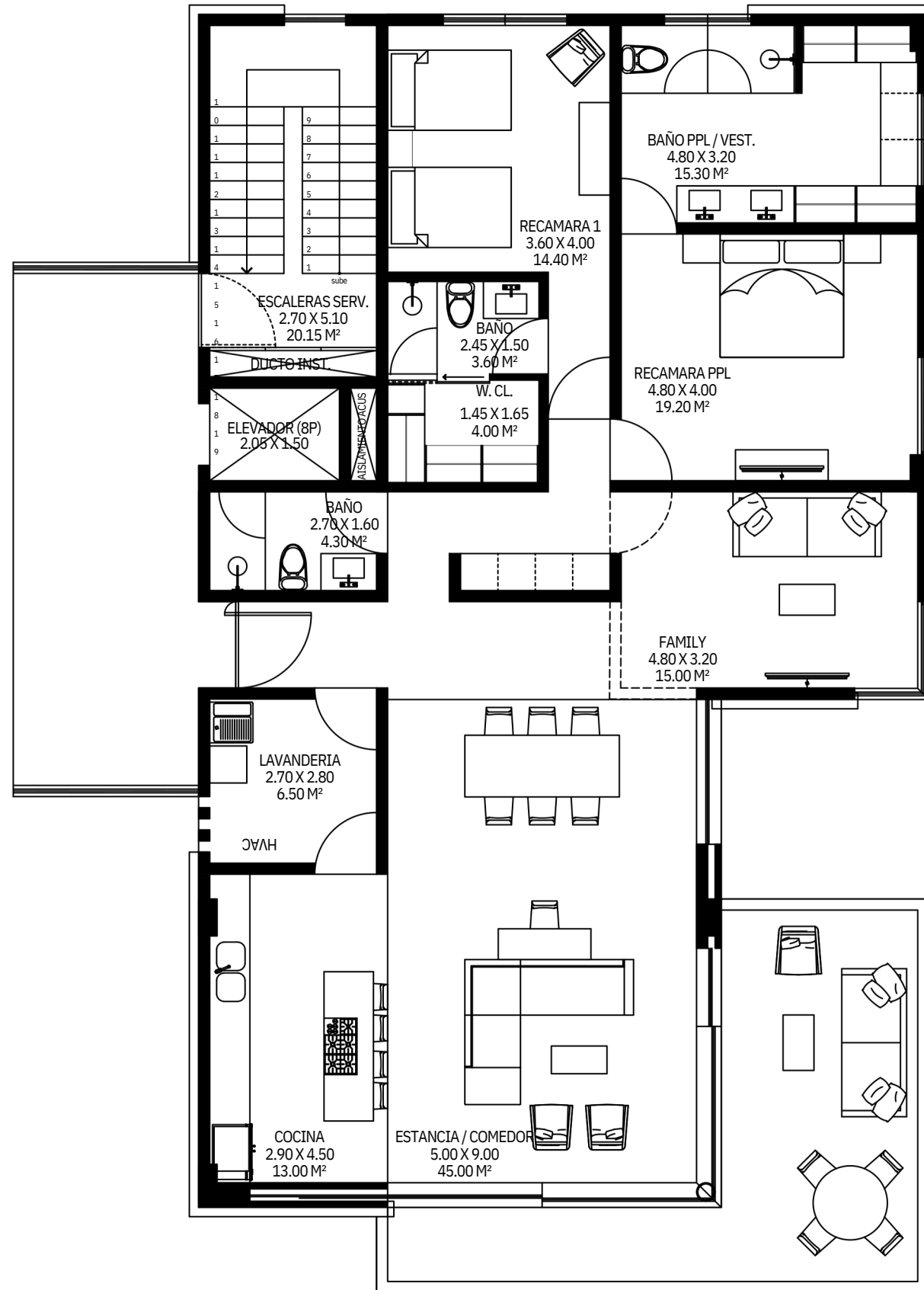


TIPOLOGIA D

Area Interior 201.51
 Area Terrazas m² 43.31
 m²

Escala Grafica

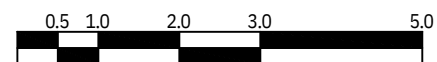


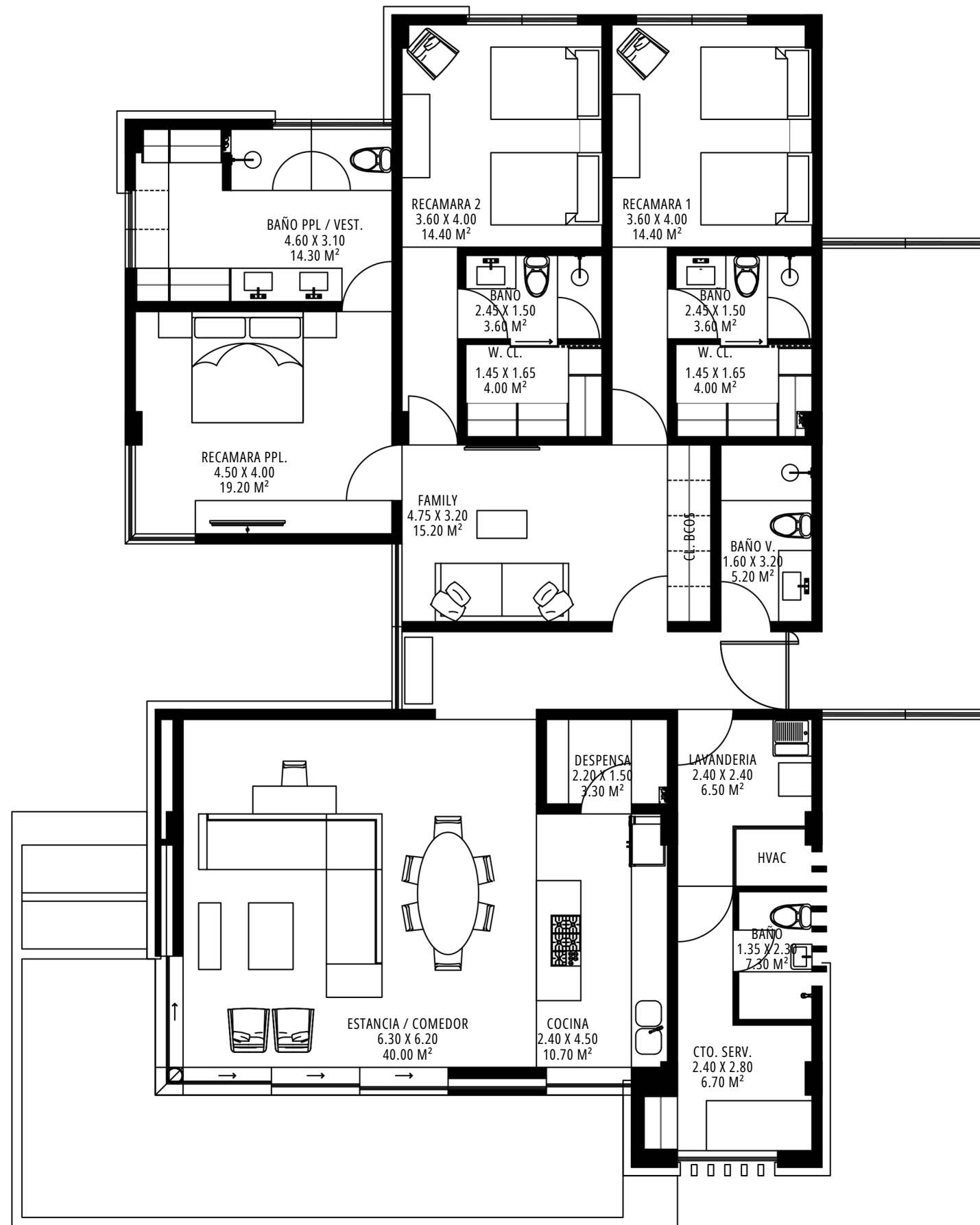


TIPOLOGIA C

Area Interior 177.25
 Area Terrazas m² 29.13
 m²

Escala Grafica

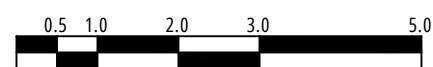


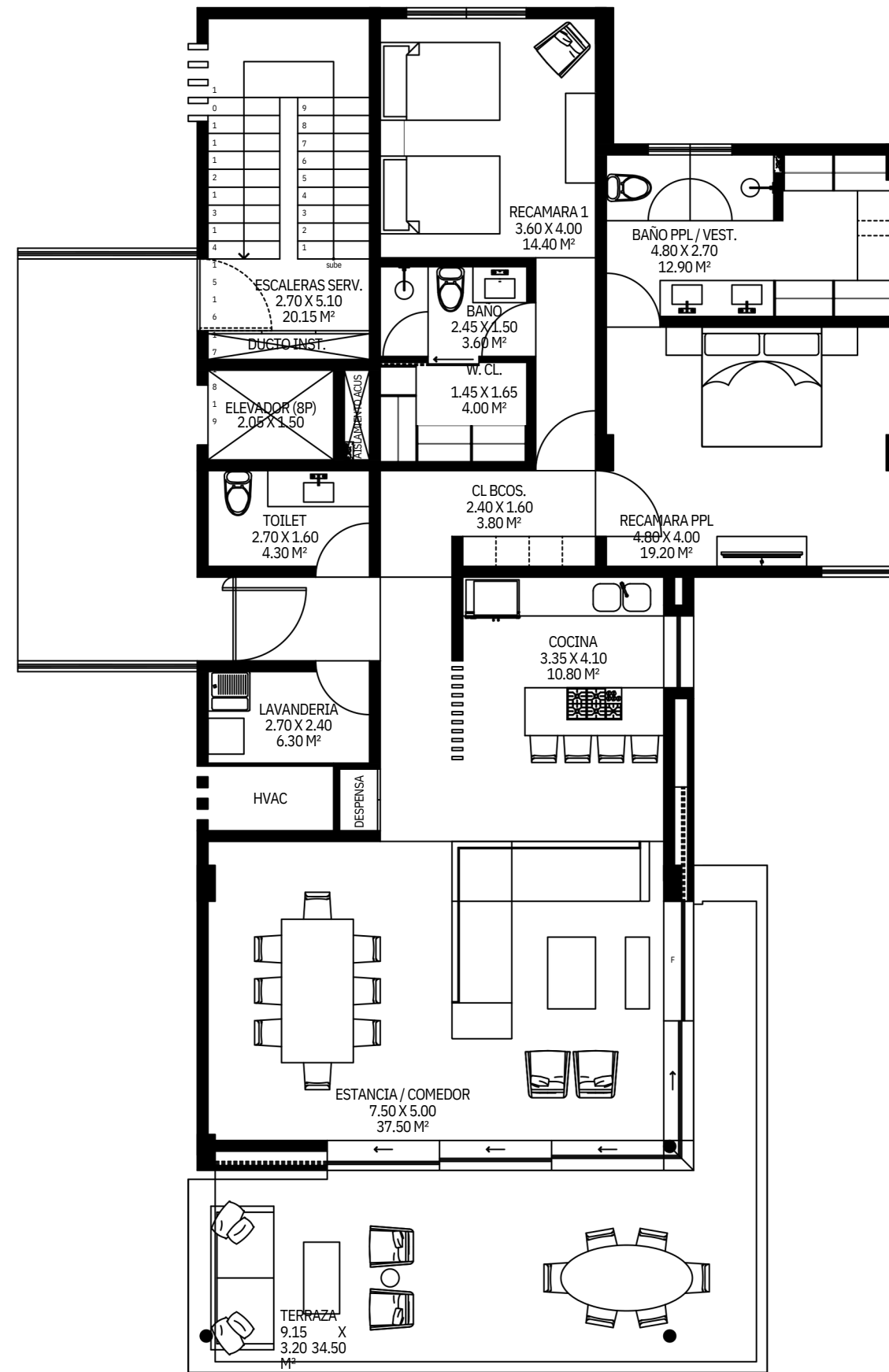


TIPOLOGIA E

Area Interior 221.16
 Area Terrazas m² 34.21
 m²

Escala Grafica





TIPOLOGIA B

Area Interior 160.09
 Area Terrazas m² 38.92
 m²

Escala Grafica

