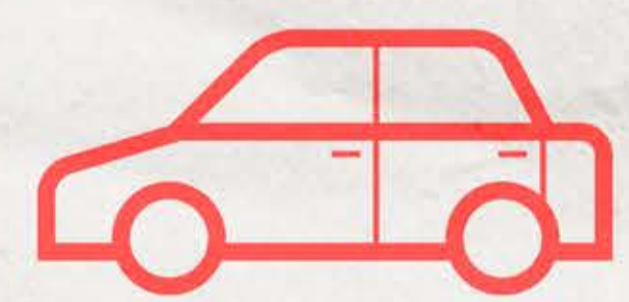
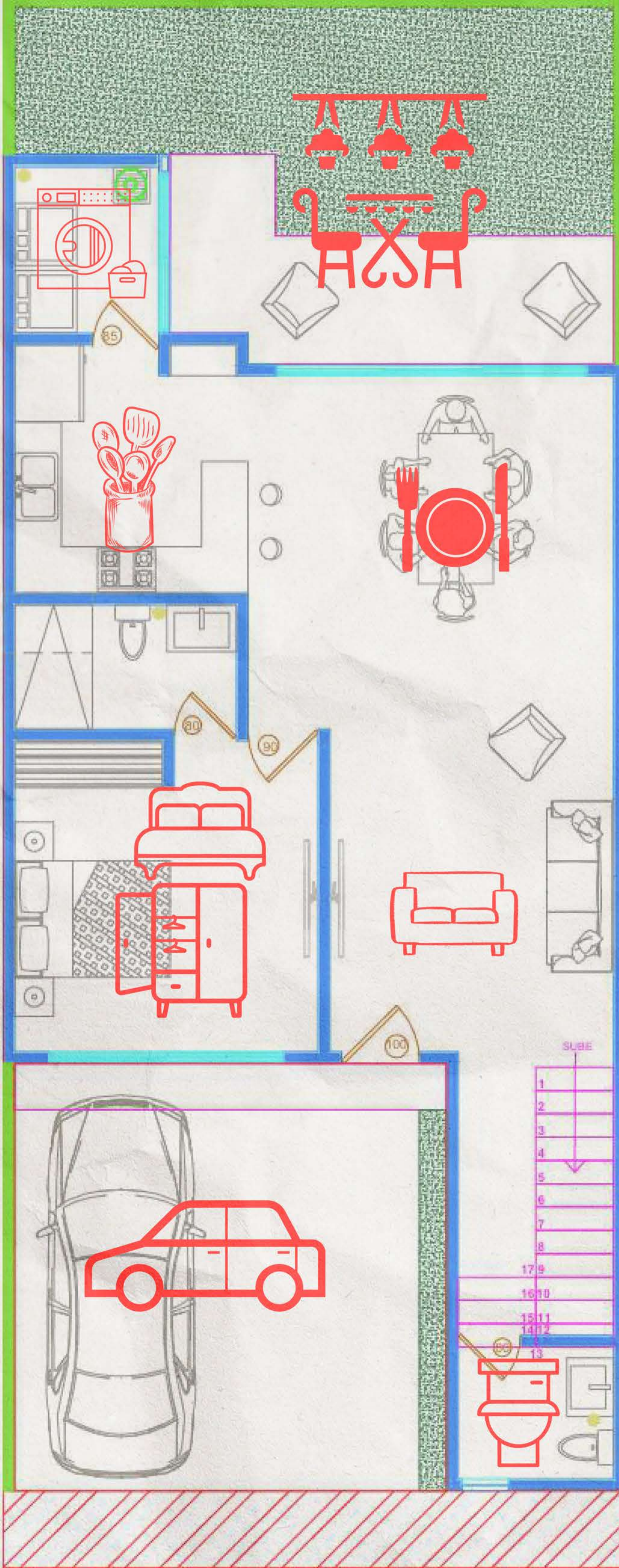
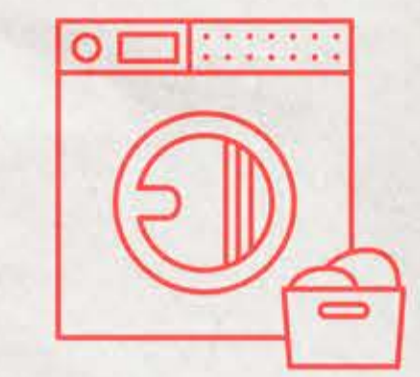


**TERRENO 162 M2  
CONSTRUCCION 170 M2**

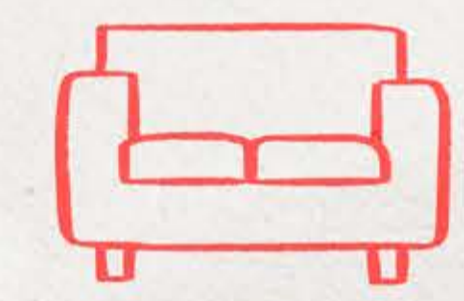
**PLANTA BAJA**



**COCHERA PARA  
2 VEHICULOS**



**CUARTO DE LAVADO  
TECHADO Y CON CANCEL**



**SALA**



**AREA DE TERRAZA  
CON JARDIN**



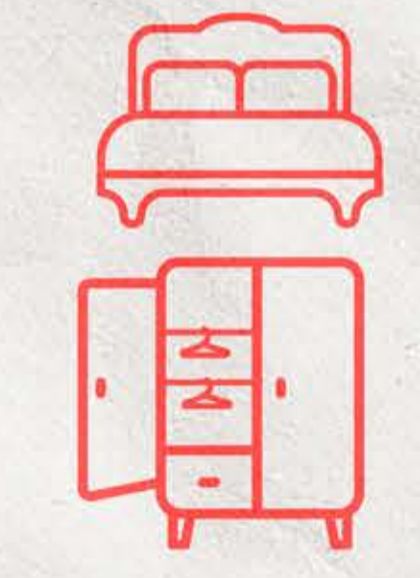
**COMEDOR**



**BAÑO DE VISITAS**



**COCINA CON  
DESAYUNADOR**



**RECAMARA EN PLANTA  
BAJA CON CLOSET Y  
BAÑO COMPLETO**

