

MX. YUC.



BOGA

BEACH FRONT LIVING

BEACH FRONT LIVING





MX. YUC.



EXPERIENCE  
THE BEST MOMENTS

BEACH FRONT LIVING

MX. YUC.



# BOGA

**Boga is the best time of your life.**

We built this project focusing on the apex of emotions. We believe life comprises good and bad moments, as well as a gigantic gray scale, but we agree that there are moments that lift us up and enlighten us.

Our goal is to build a space that dignifies those moments: a tribute to the best of your life.



BEACH FRONT LIVING



MX. YUC.



TOWN SQUARE

MIXED - USE - LIVING



Q.ROO. MIRADOR TULUM MEX.

ECOLIVING COMMUNITY

*Tulum*

OPHELIA

COMMUNITY LIVING

— PLAZA —

COL. POLANCO31 MEX.

TAO

APARTMENTS

HUMANA

T U L U M



ARTHOUSE

SIGNATURE



ARTHOUSE

MÉRIDA

*bungalos*  
village

*bungalos.*  
Luxury Condos at Tulum



BOGA

BEACH FRONT LIVING

zen

APARTMENTS

BEACH FRONT LIVING





MX. YUC.

# ABOUT TELCHAC



The Yucatecan coast is, perhaps, the only stretch of beach in Mexico where you can always enjoy warm water temperatures and relaxing waves, as well as the most beautiful sunrises and sunsets.

The safest place to vacation in Mexico: Telchac and the coast of Progreso both have a lot of tourist attractions, restaurants, water activities and marinas. A perfect tourist destination for those looking to leave the big cities behind and find abundant natural beauty.

Perfect for water sports and admiring the local fauna, a parade of colors and experiences in what we can truly consider a natural paradise.

Telchac's privileged location, less than an hour away from Merida, places it just a few miles away from the city where security, peace, and quiet are the common denominator, despite being connected to the rest of the world by sky, land, and sea.



BEACH FRONT LIVING

MX. YUC.

# LOCATION AND NEARBY CITIES

Chuburna Puerto

Chicxulub puerto

Telchac Puerto

Telchac

Tamanché  
Komchén

Chablekal

La Ceiba

Conkal

Motul

Merida - Boga  
35 minutes.

Mérida

YUCATAN COUNTRY  
ARTHOUSE SIGNATURE  
TOWN SQUARE  
MIXED-USE-LIVING  
BOGA  
BEACH FRONT LIVING

BEACH FRONT LIVING

# ABOUT KINUH

A modern, exclusive nautical residential destination in Yucatan, perfect for those looking for a sophisticated lifestyle by the sea. Kinuh has everything you need to enjoy a wide range of water activity options to reconnect with the sea and nature, as well as a Club House with amenities focused on your comfort.

Kinuh is the perfect place to invest. Located in the heart of the Yucatecan coast, it covers an area of 39.38 hectares, with 1,283 linear meters (that's over 4,200 feet) of beautiful beaches and emerald waters.

The set of services offered by Kinuh, the quality of its amenities, and its approach to culture and environment, make it the best residential nautical destination in Yucatan.

A unique master plan project on the Telchac beach, it offers a controlled-access gate, a yacht marina, and a clubhouse.



MX. YUC.



THE PERFECT SETTING  
TO ENJOY LIFE.

BEACH FRONT LIVING



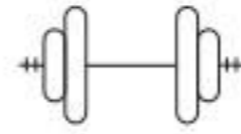
# AMENITIES



Snack Bar



Spa



Gym



Bike



Event Hall



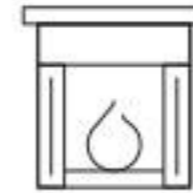
Kid's Pool



Restaurant



Pádel



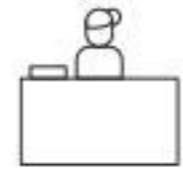
Firepit



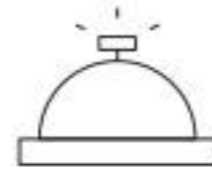
Cabins and lounge chairs



Ludotheque



Grand Lobby



Room Service



Swimming Pool



Coworking Space







# MASTER PLAN

## Ground Floor

- Main pool
- Snack Bar
- Fire pit
- Lobby
- Restaurant
- Terrace



Padel court

e: Townhuse Units or N1 and N2

Two 4-br corner units

Two 3-br corner units

Three 2-level units

# MASTER PLAN

## Segundo nivel Amenidades

- Flex Room
- Children's area
- Gym
- Steam, sauna, showers
- Multimedia room
- Coworking space



Note: Townhouse Units  
on N1 and N2

- Two 4-br corner units
- Two 3-br corner units
- Three 2-level units



MX. YUC.



# THE INSPIRATION BEHIND BOGA

BEACH FRONT LIVING



## Eduardo García Figueroa, Architect.

Tulum has been home to Studio Arquitectos since 2010. Its nature and energy inspire the team to create each project based on respect for natural and urban environments. Committed to a development in harmony with their context, they generate experiences with a regional character, focused on the comfort and function of the spaces.

Part of their philosophy involves believing in architecture as an expression of the balance between aesthetics and function, and in space as a dialogue between the environment and the human habitat. The site and its context are the guiding principle of each project, and their analysis is complemented by the client's goals, which, together, create the essence behind each project.

Studioarqs is characterized by the values that inspire the team to build a common goal: holistic development and growth, in a loyal, fun environment.

"We love what we do; we share a passion for architecture and design. We like to learn and to grow with each of our clients when developing and executing projects."



# SOFÍA ASPE

## INTERIOR DESIGN

Sofía Aspe has participated in more than 87 projects in Mexico, the United States, Israel and Spain. She has been recognized as one of the ten most influential interior designers in Mexico by AD magazine. In 2012 she founded Sofía Aspe Interiorismo in Mexico City, a design studio comprised by architects, industrial designers, art historians, and interior designers. Together, they provide personalized service, attention to detail and unparalleled style, having become a flagship office for contemporary interior design in Mexico. Renowned for her unique, eclectic style, which offers spaces full of character and timelessness, there is no better person to head this project.



Motor Lobby

# ACABADOS

- Imperial vein marble floors
- Oak carpentry
- Fully-equipped kitchen
- Oven
- Range hood
- Grill
- Double kitchen sink
- Air conditioning
- Service room
- Water heater
- European taps
- Tempered-glass bathroom panels
- Villeroy & Bosch toilets
- Mirror
- Closets





MX. YUC.

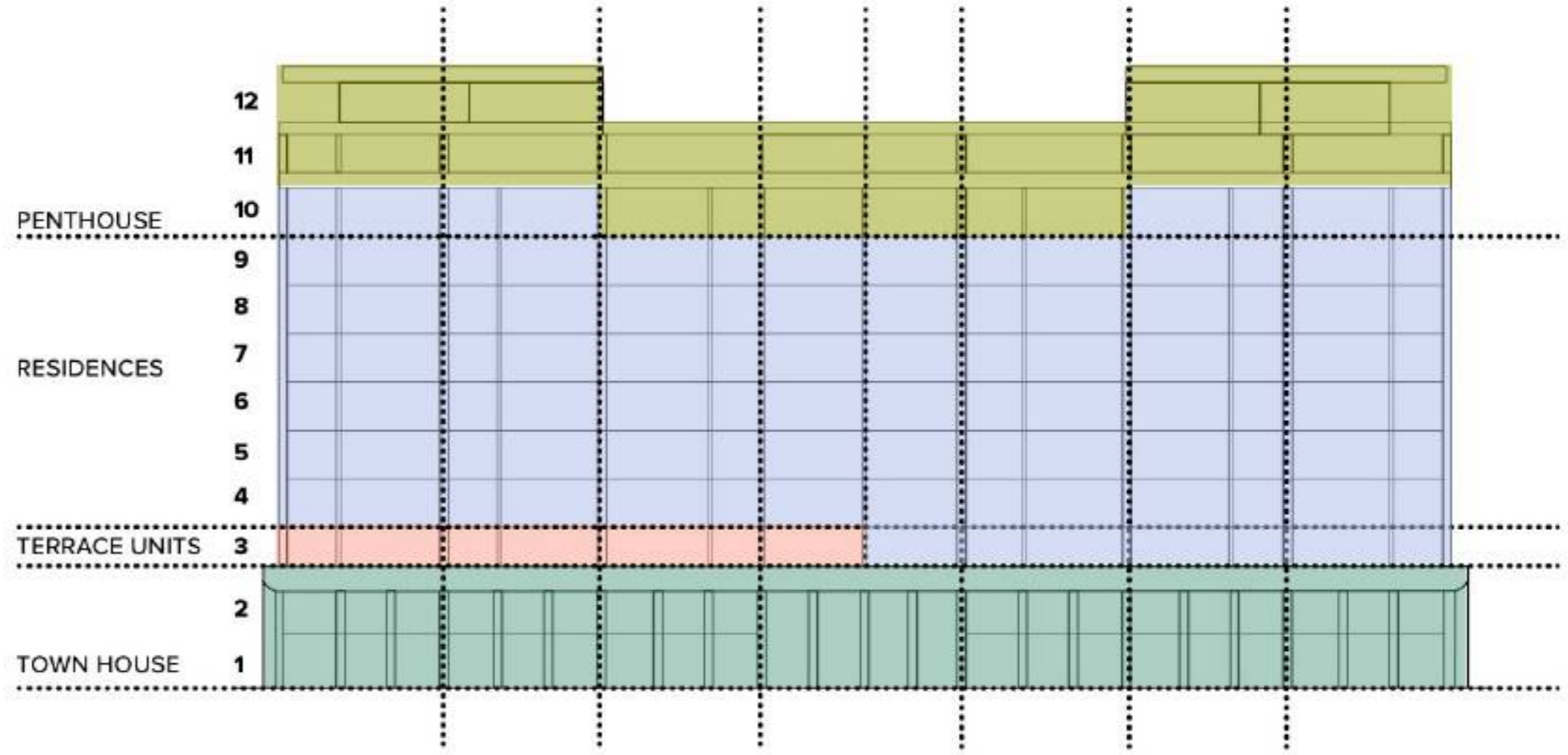
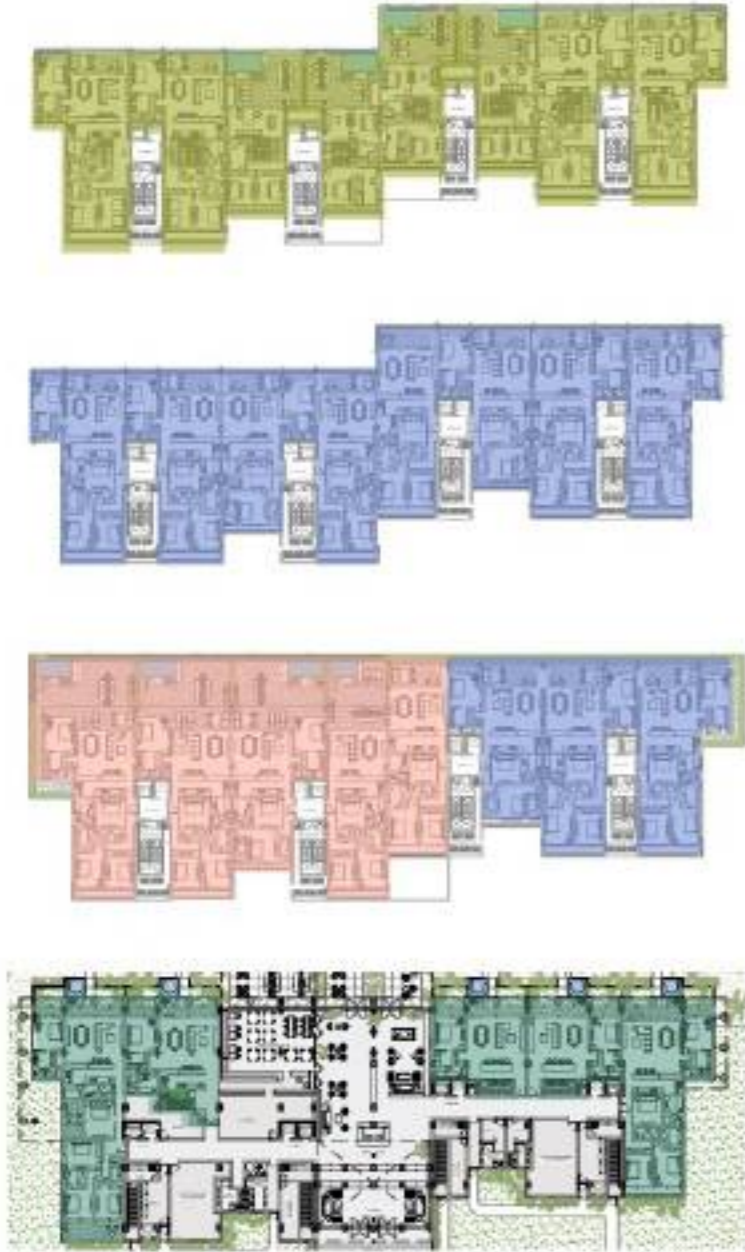


75 EXCLUSIVE APARTMENTS.

BEACH FRONT LIVING



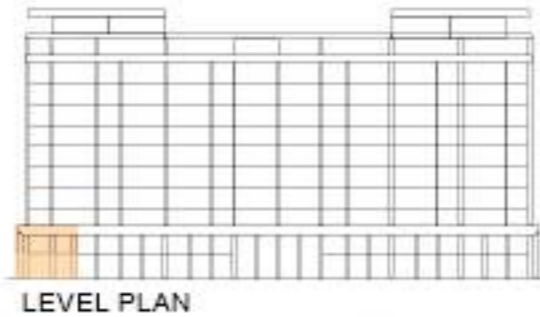




- Unit location**
- TOWN HOUSE
  - TERRACE UNITS
  - RESIDENCES
  - PENTHOUSE

**TOWNHOUSE: 4 BEDROOMS + 1 FLEX ROOM**  
**2 Units**  
**INTERIOR 215.90 SQ M**  
**TERRACE 133.53 SQ M**  
**TOTAL AREA 349.43 SQ M**

- 4 bedrooms
- 1 flex room
- 3 bathrooms
- Laundry room + full bathroom
- Living – dining – kitchen area / ocean view
- Private terrace with pool / ocean view



**TOWNHOUSE: 4 BEDROOMS**

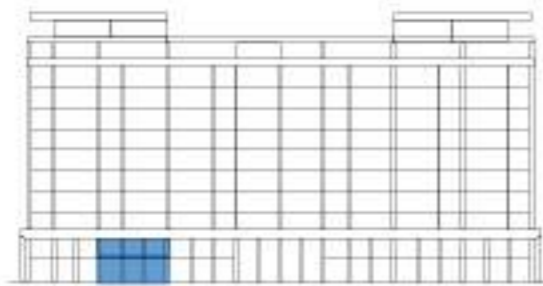
**1 Unit**

**INTERIOR 253.36 SQ M**

**TERRACE 123.66 SQ M**

**TOTAL AREA 377.02 SQ M**

- 4 bedrooms
- 4 and a half bathrooms
- Laundry room + full bathroom
- Living – dining – kitchen area / ocean view
- Private terrace with pool / ocean view



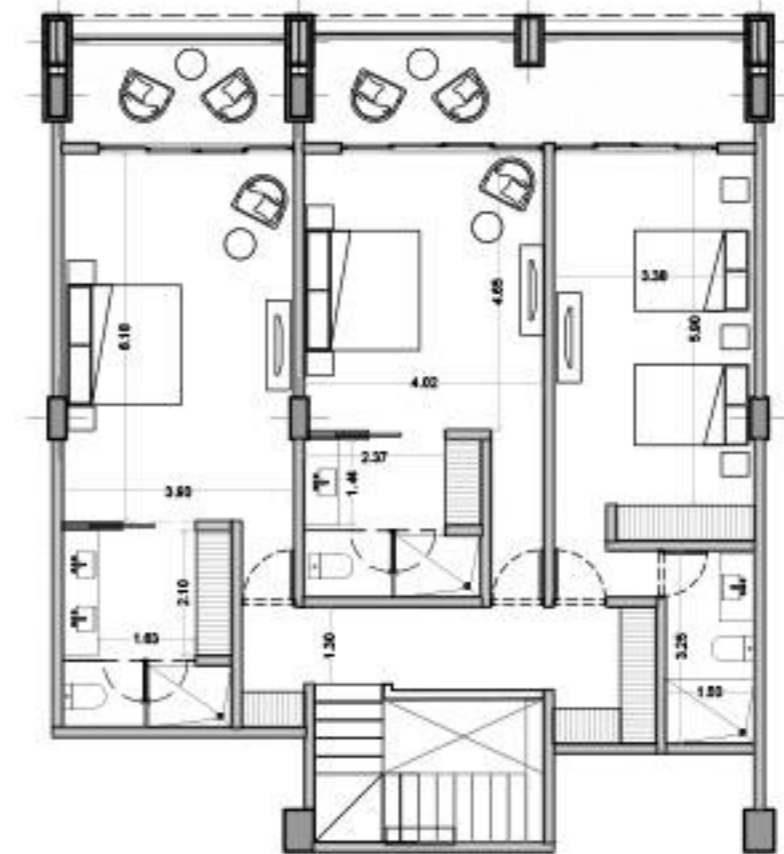
LEVEL PLAN



FLOOR PLAN LOCATION BY TYPE



LOWER LEVEL



UPPER LEVEL

**TOWNHOUSE: 3 BEDROOMS + 1 FLEX ROOM**  
**2 Units**

**INTERIOR 208.26 SQ M**  
**TERRACE 127.06 SQ M**  
**TOTAL AREA 335.32 SQ M**

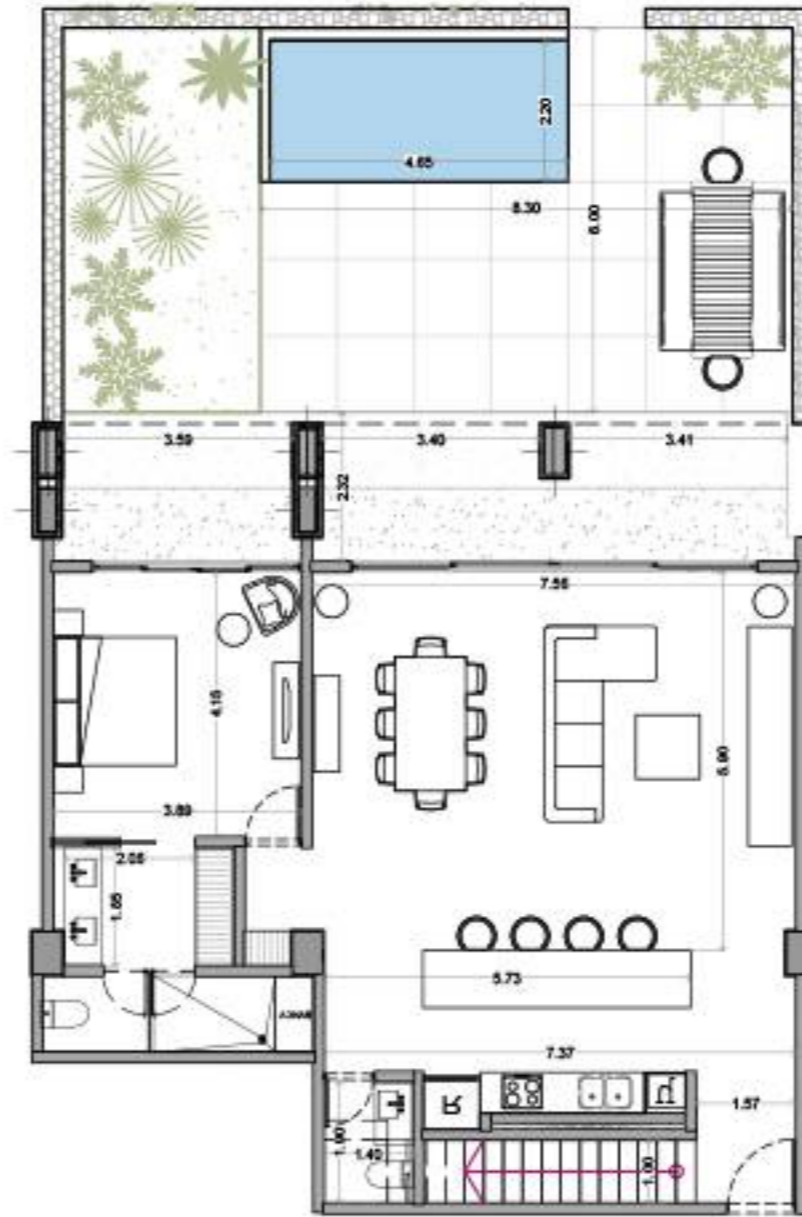
- 3 bedrooms
- 1 flex room / ocean view
- 4 and a half bathrooms
- Laundry room + full bathroom
- Living – dining – kitchen area / ocean view
- Private terrace with pool / ocean view



LEVEL PLAN



FLOOR PLAN LOCATION BY TYPE



LOWER LEVEL



UPPER LEVEL



**TOWNHOUSE: 3 BEDROOMS + 1 FLEX ROOM**

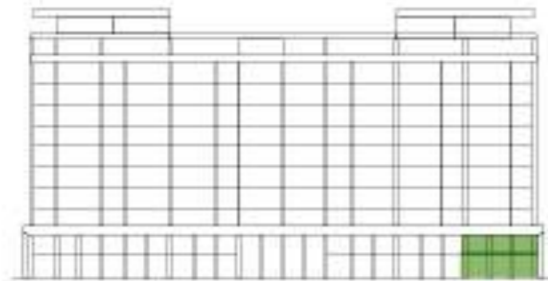
**2 Units**

**INTERIOR 192.37 SQ M**

**TERRACE 122.46 SQ M**

**TOTAL AREA 314.83 SQ M**

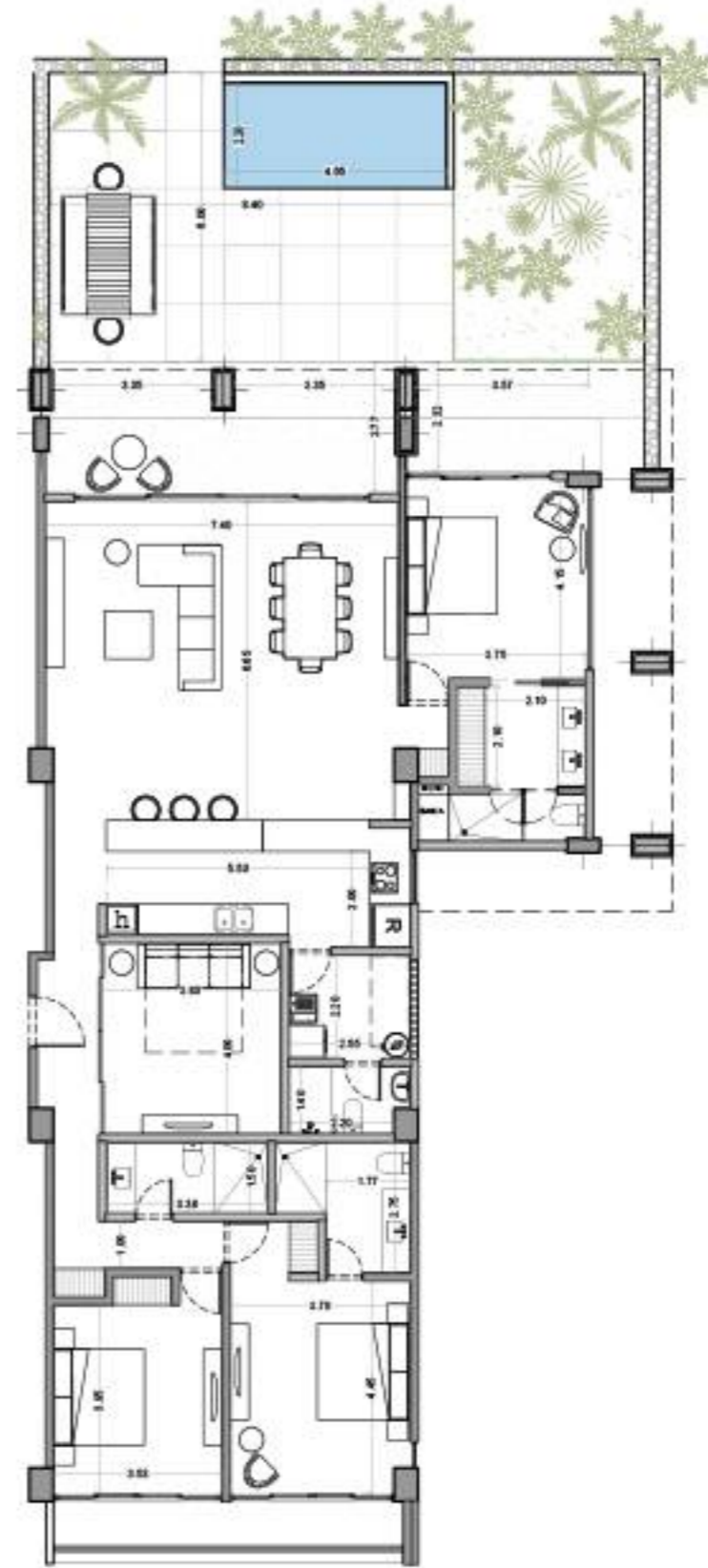
- 3 bedrooms
- 1 flex room
- 3 bathrooms
- Laundry room + full bathroom
- Living – dining – kitchen area / ocean view
- Private terrace with pool / ocean view



LEVEL PLAN



FLOOR PLAN LOCATION BY TYPE



**TERRACE UNIT: 3 BEDROOMS + 1 FLEX ROOM**

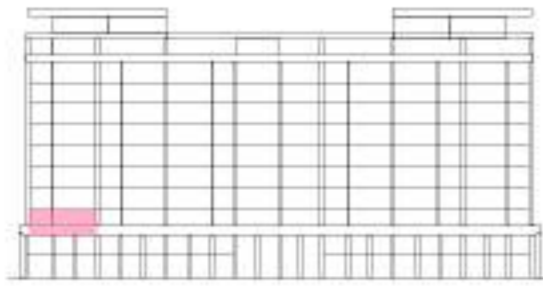
**1 Unit**

**INTERIOR 184.38 SQ M**

**TERRACE 120.98 SQ M**

**TOTAL AREA 305.36 SQ M**

- 3 bedrooms
- 1 flex room
- 3 bathrooms
- Laundry room + full bathroom
- Living – dining – kitchen area / ocean view
- Private terrace with pool / ocean view



LEVEL PLAN



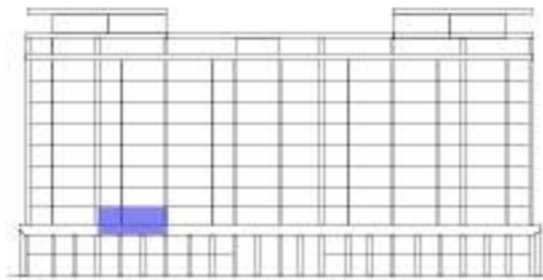
FLOOR PLAN LOCATION BY TYPE



**TERRACE UNIT: 3 BEDROOMS + 1 FLEX ROOM**  
**1 Unit**

**INTERIOR 184.56 SQ M**  
**TERRACE 99.14 SQ M**  
**TOTAL AREA 283.70 SQ M**

- Three bedrooms
- One flex room
- Three bathrooms
- Laundry room + full bathroom
- Living – dining – kitchen area / ocean view
- Private terrace with pool / ocean view



LEVEL PLAN



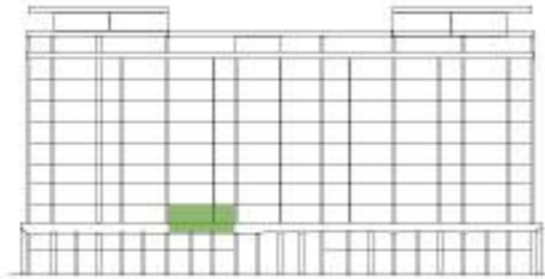
FLOOR PLAN LOCATION BY TYPE



**TERRACE UNIT: 2 PLUS BEDROOMS + 1 FLEX ROOM**  
**1 Unit**

**INTERIOR 157.66 SQ M**  
**TERRACE 95.97 SQ M**  
**TOTAL AREA 253.63 SQ M**

- 2 bedrooms
- 1 flex room
- 3 bathrooms
- Laundry room + full bathroom
- Living – dining – kitchen area / ocean view
- Private terrace with pool / ocean view



LEVEL PLAN



FLOOR PLAN LOCATION BY TYPE



**TERRACE UNIT: 2 BEDROOMS + 1 FLEX ROOM**

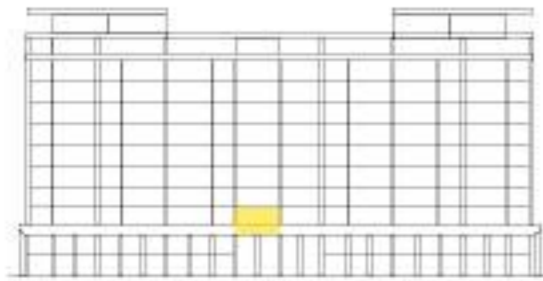
**1 Unit**

**INTERIOR 145.83 SQ M**

**TERRACE 70.53 SQ M**

**TOTAL AREA 216.36 SQ M**

- 2 bedrooms
- 1 flex room
- 2 bathrooms
- Laundry room + full bathroom
- Living – dining – kitchen area / ocean view
- Private terrace with pool / ocean view



LEVEL PLAN



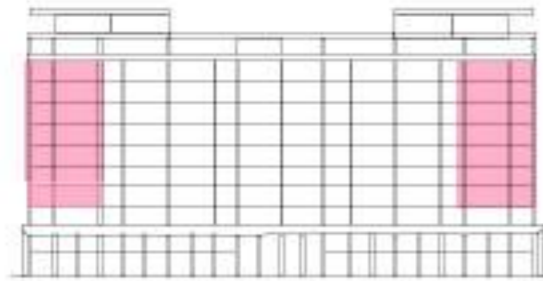
FLOOR PLAN LOCATION BY TYPE



**CORNER RESIDENCE: 3 BEDROOMS + 1 FLEX ROOM**  
**14 Units**

**INTERIOR 185.73 SQ M**  
**TERRACE 31.00 SQ M**  
**TOTAL AREA 216.73 SQ M**

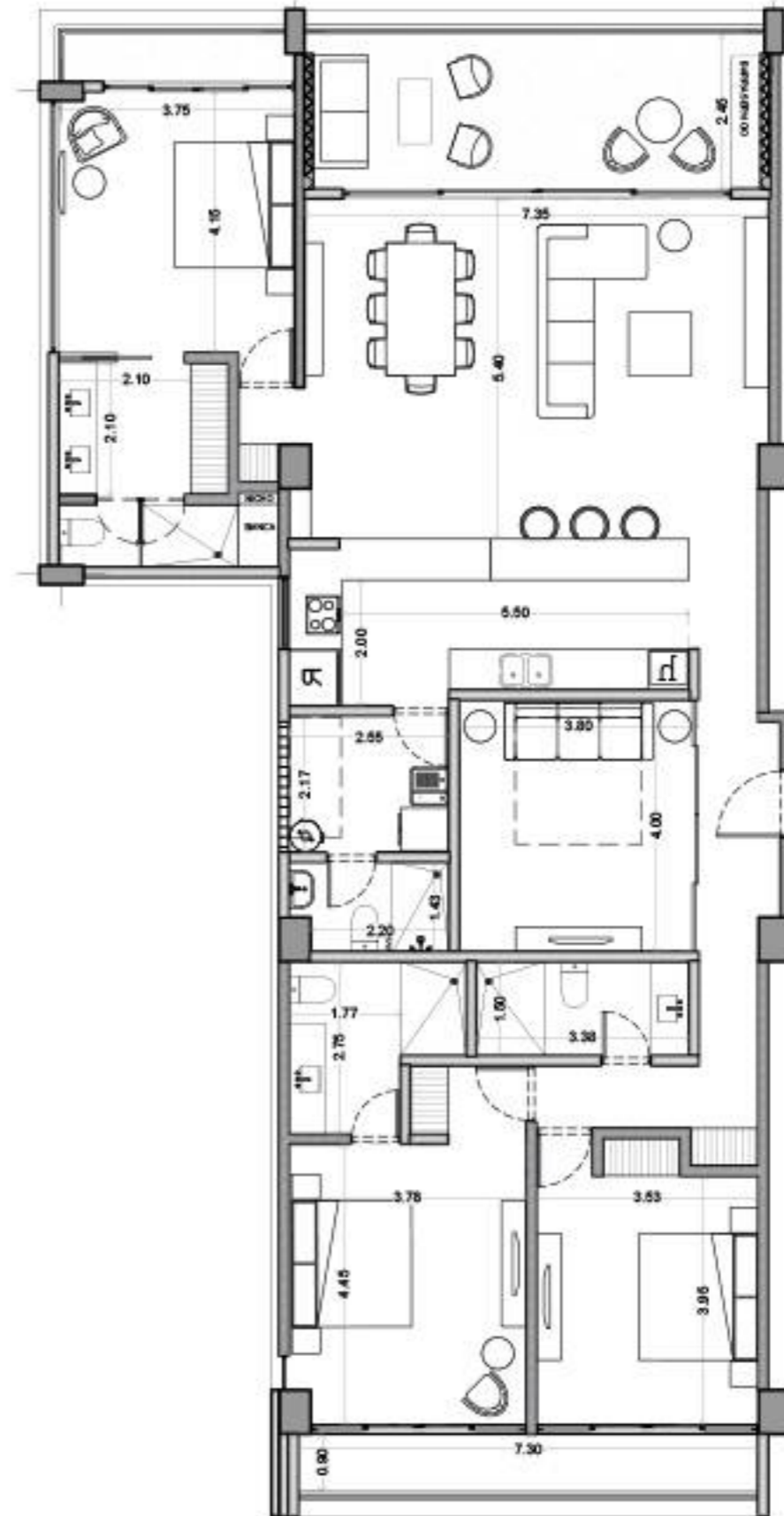
- 3 bedrooms
- 1 flex room
- 3 bathrooms
- Laundry room + full bathroom
- Living – dining – kitchen area / ocean view
- Private terrace / ocean view



LEVEL PLAN



FLOOR PLAN LOCATION BY TYPE



**RESIDENCES: 3 BEDROOMS + 1 FLEX ROOM**

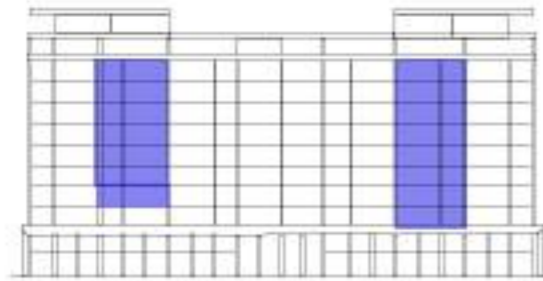
**14 Units**

**INTERIOR 184.56 SQ M**

**TERRACE 31.53 SQ M**

**TOTAL AREA 216.09 SQ M**

- 3 bedrooms
- 1 flex room
- 3 bathrooms
- Laundry room + full bathroom
- Living – dining – kitchen area / ocean view
- Private terrace / ocean view



LEVEL PLAN



FLOOR PLAN LOCATION BY TYPE



**RESIDENCES: 2 PLUS BEDROOMS + 1 FLEX ROOM**

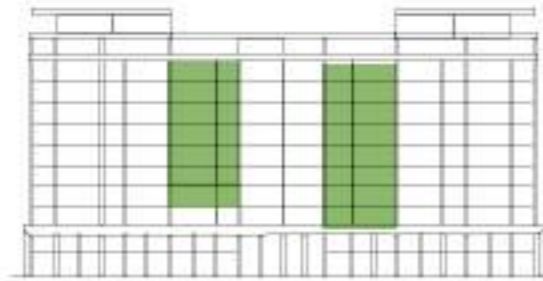
**12 Units**

**INTERIOR 157.66 SQ M**

**TERRACE 28.35 SQ M**

**TOTAL AREA 186.01 SQ M**

- 2 bedrooms
- 1 flex room
- 3 bathrooms
- Laundry room + full bathroom
- Living – dining – kitchen area / ocean view
- Private terrace / ocean view



LEVEL PLAN



FLOOR PLAN LOCATION BY TYPE





**RESIDENCES: 2 BEDROOMS + 1 FLEX ROOM**

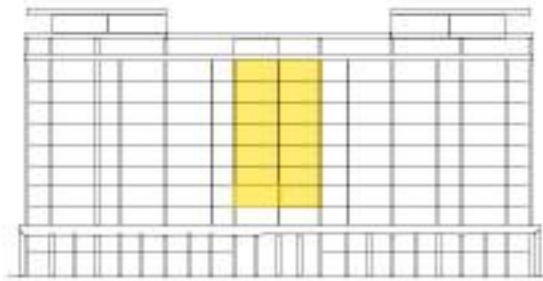
**12 Units**

**INTERIOR 145.83 SQ M**

**TERRACE 27.38 SQ M**

**TOTAL AREA 173.21 SQ M**

- 2 bedrooms
- 1 flex room
- 2 bathrooms
- Laundry room + full bathroom
- Living – dining – kitchen area / ocean view
- Private terrace / ocean view



LEVEL PLAN



FLOOR PLAN LOCATION BY TYPE



**CORNER PENTHOUSE: 5 BEDROOMS + 1 FLEX ROOM**  
**2 Units**

**INTERIOR 285.00 SQ M**  
**TERRACE 105.81 SQ M**  
**TOTAL AREA 390.81 SQ M**

- 5 bedrooms
- 1 flex room / ocean view
- 5 and a half bathrooms
- Laundry room + full bathroom
- Living – dining – kitchen area / ocean view
- Private terrace with pool / ocean view
- Private terrace / lagoon view



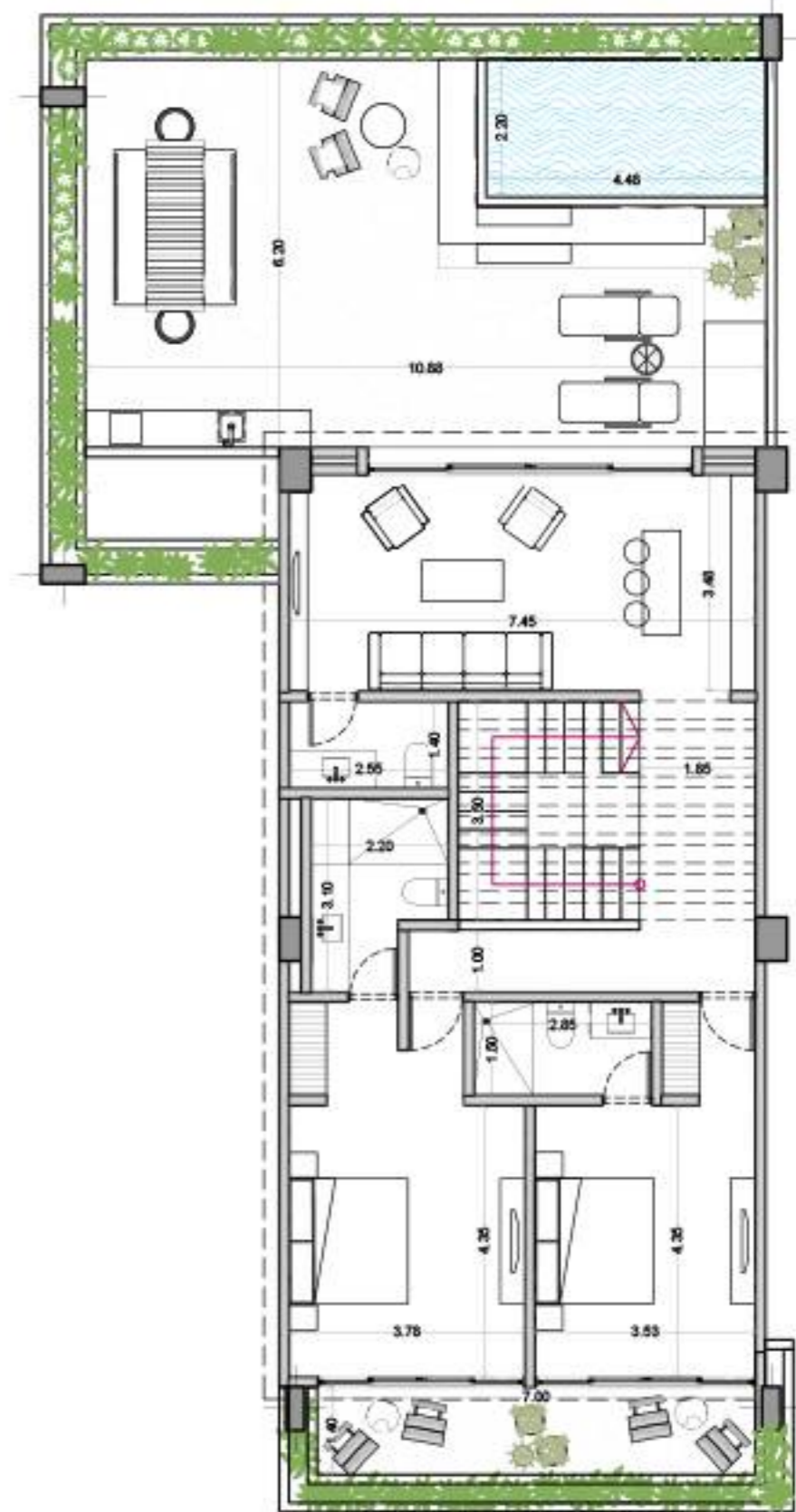
LEVEL PLAN



FLOOR PLAN LOCATION BY TYPE



LOWER LEVEL

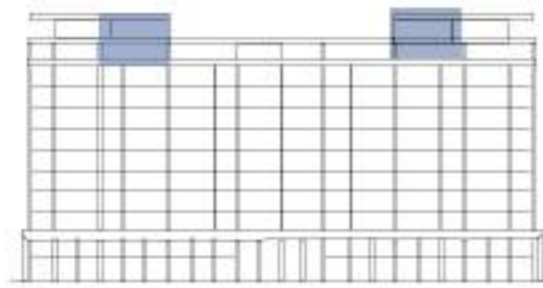


UPPER LEVEL

**PENTHOUSE: 5 BEDROOMS + 1 FLEX ROOM**  
**2 Units**

**INTERIOR 283.23 SQ M**  
**TERRACE 106.55 SQ M**  
**TOTAL AREA 389.78 SQ M**

- 5 bedrooms
- 1 flex room / ocean view
- 5 and a half bathrooms
- Laundry room + full bathroom
- Living – dining – kitchen area / ocean view
- Private terrace with pool / ocean view
- Private terrace / lagoon view



LEVEL PLAN



FLOOR PLAN LOCATION BY TYPE



LOWER LEVEL



UPPER LEVEL

**PENTHOUSE: 4 BEDROOMS + 1 FLEX ROOM**

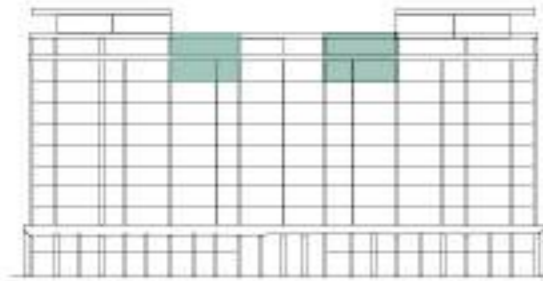
**2 Units**

**INTERIOR 241.34 SQ M**

**TERRACE 94.06 SQ M**

**TOTAL AREA 335.40 SQ M**

- 4 bedrooms
- 1 flex room / ocean view
- 3 and a half bathrooms
- Laundry room + full bathroom
- Living – dining – kitchen area / ocean view
- Private terrace with pool / ocean view



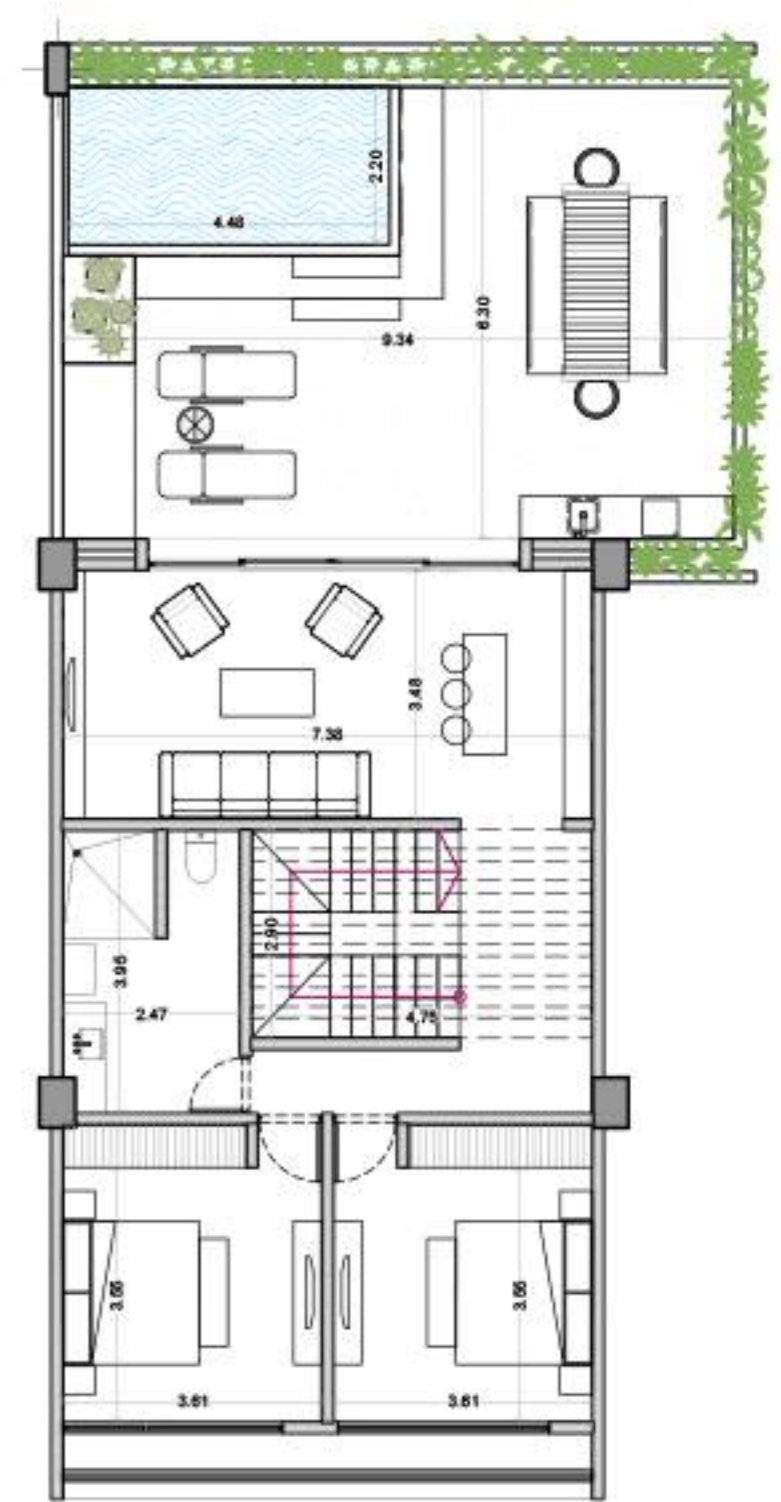
LEVEL PLAN



FLOOR PLAN LOCATION BY TYPE



LOWER LEVEL



UPPER LEVEL

**PENTHOUSE: 4 BEDROOMS + 1 FLEX ROOM**

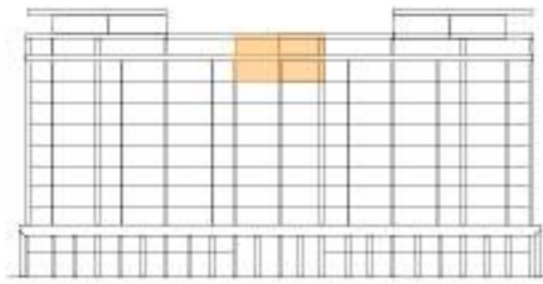
**2 Units**

**INTERIOR 226.58 SQ M**

**TERRACE 90.52 SQ M**

**TOTAL AREA 317.10 SQ M**

- 4 bedrooms
- 1 flex room / ocean view
- 4 bathrooms
- Laundry room + full bathroom
- Living – dining – kitchen area / ocean view
- Private terrace with pool / ocean view



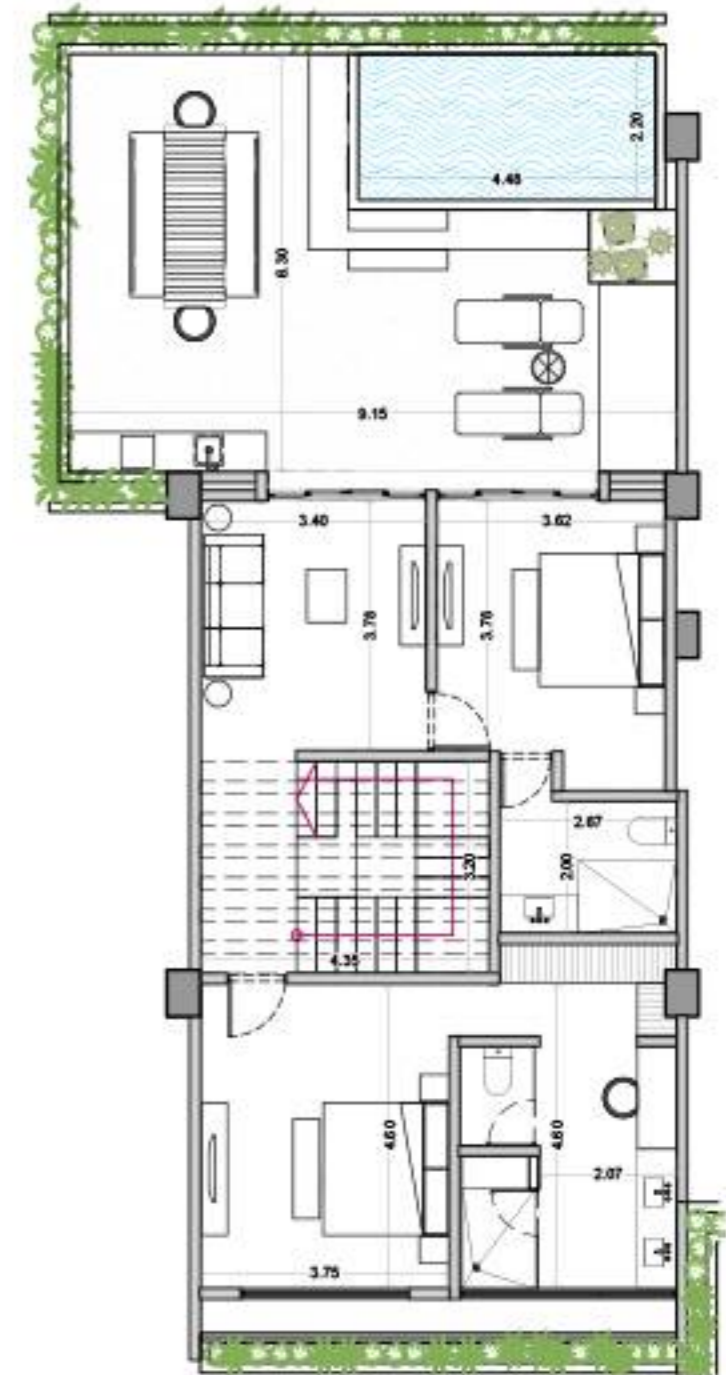
LEVEL PLAN



FLOOR PLAN LOCATION BY TYPE



LOWER LEVEL



UPPER LEVEL



Acércate a los expertos.

# Call us

Oficina Tel: 9999441300

Cel: 9991633310

Cel: 9991633302

Correo: [contacto@grupobci.com](mailto:contacto@grupobci.com)