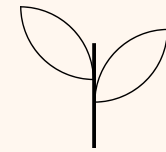


COZUMEL 82

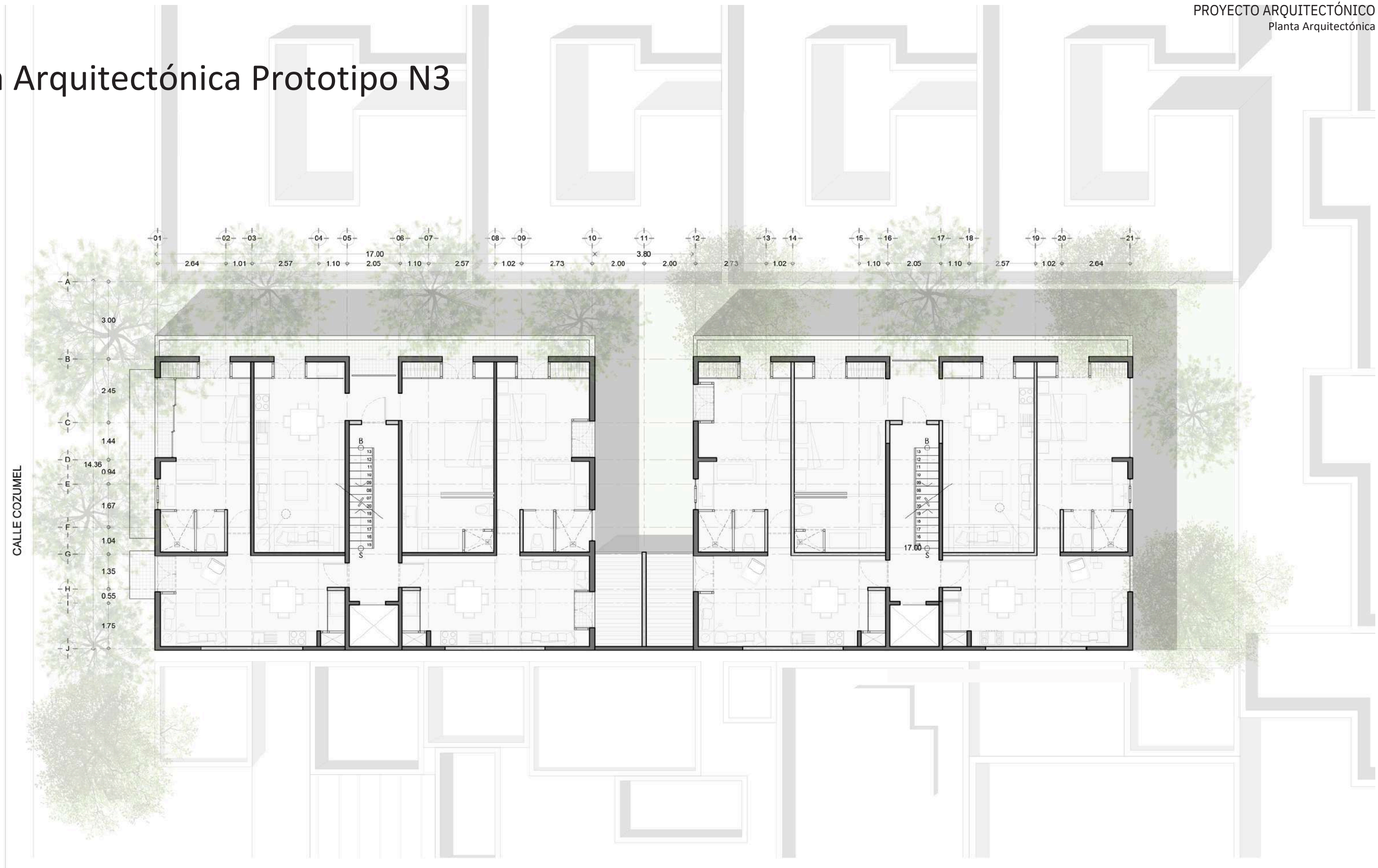
ROMA





TIPOLOGÍAS

Planta Arquitectónica Prototipo N3

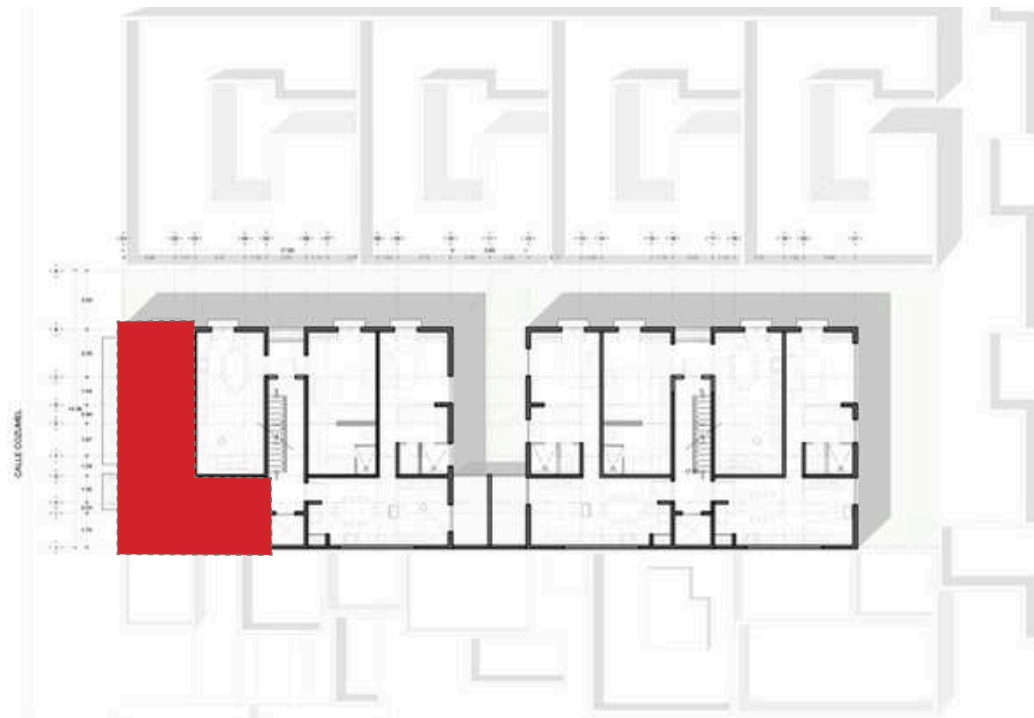


Planta Arquitectónica Prototipo N4-N5

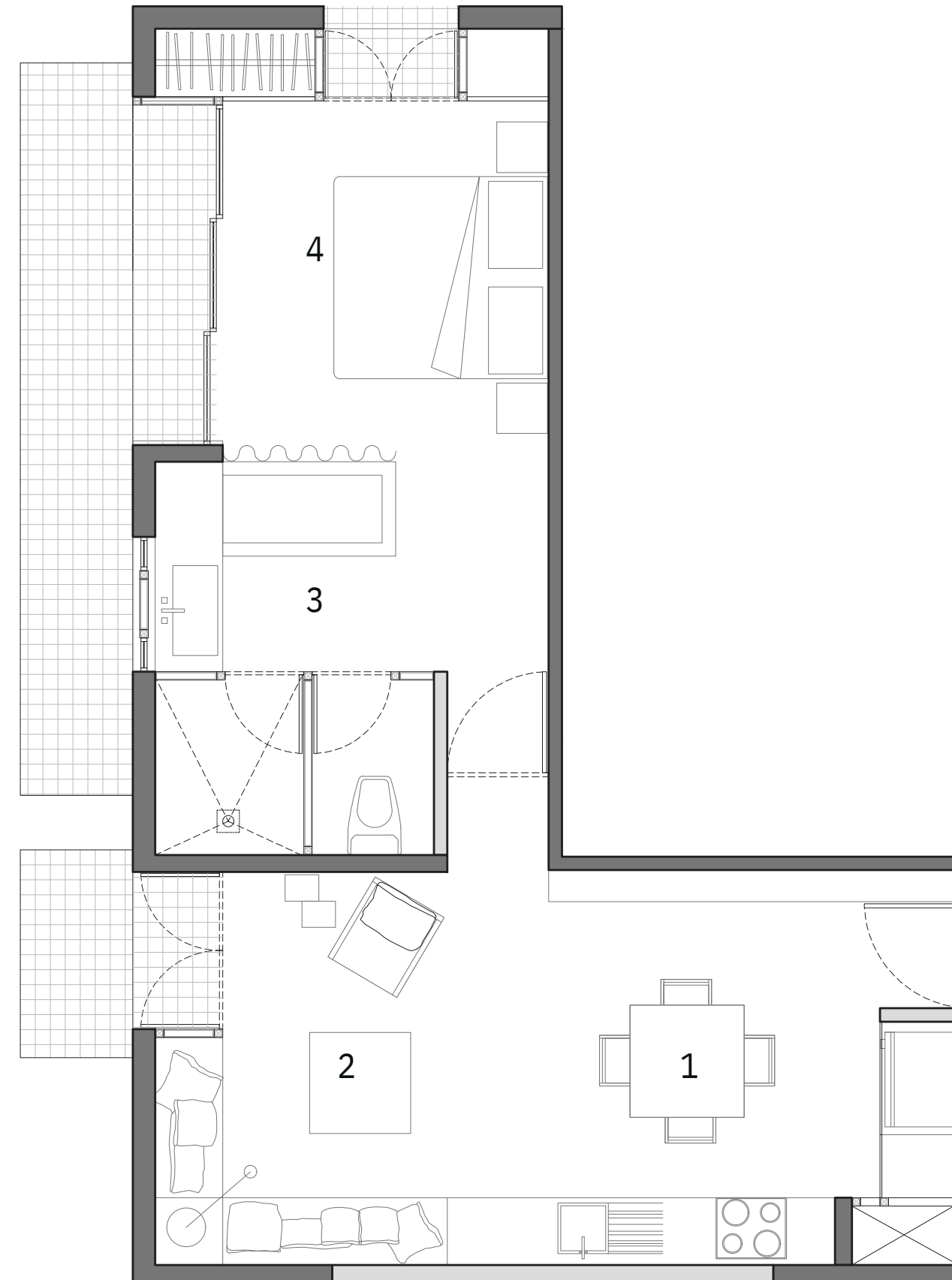


Planta Prototipo D1

ÁREA 56.34 M2

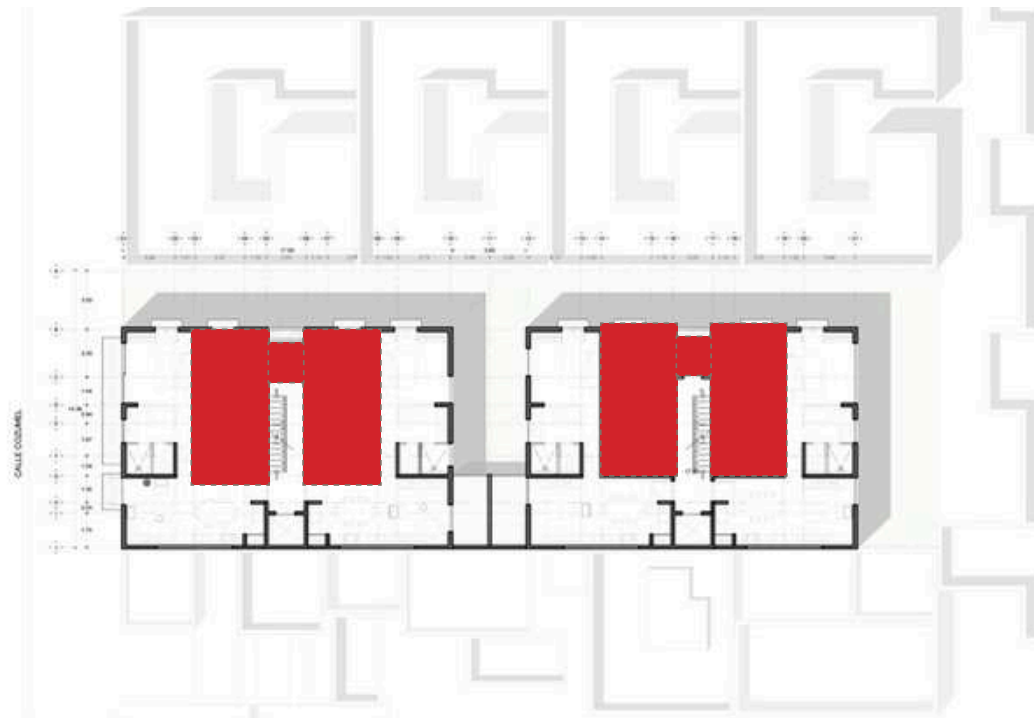


1. Cocina - Comedor
2. Sala
3. Baño
4. Recámara

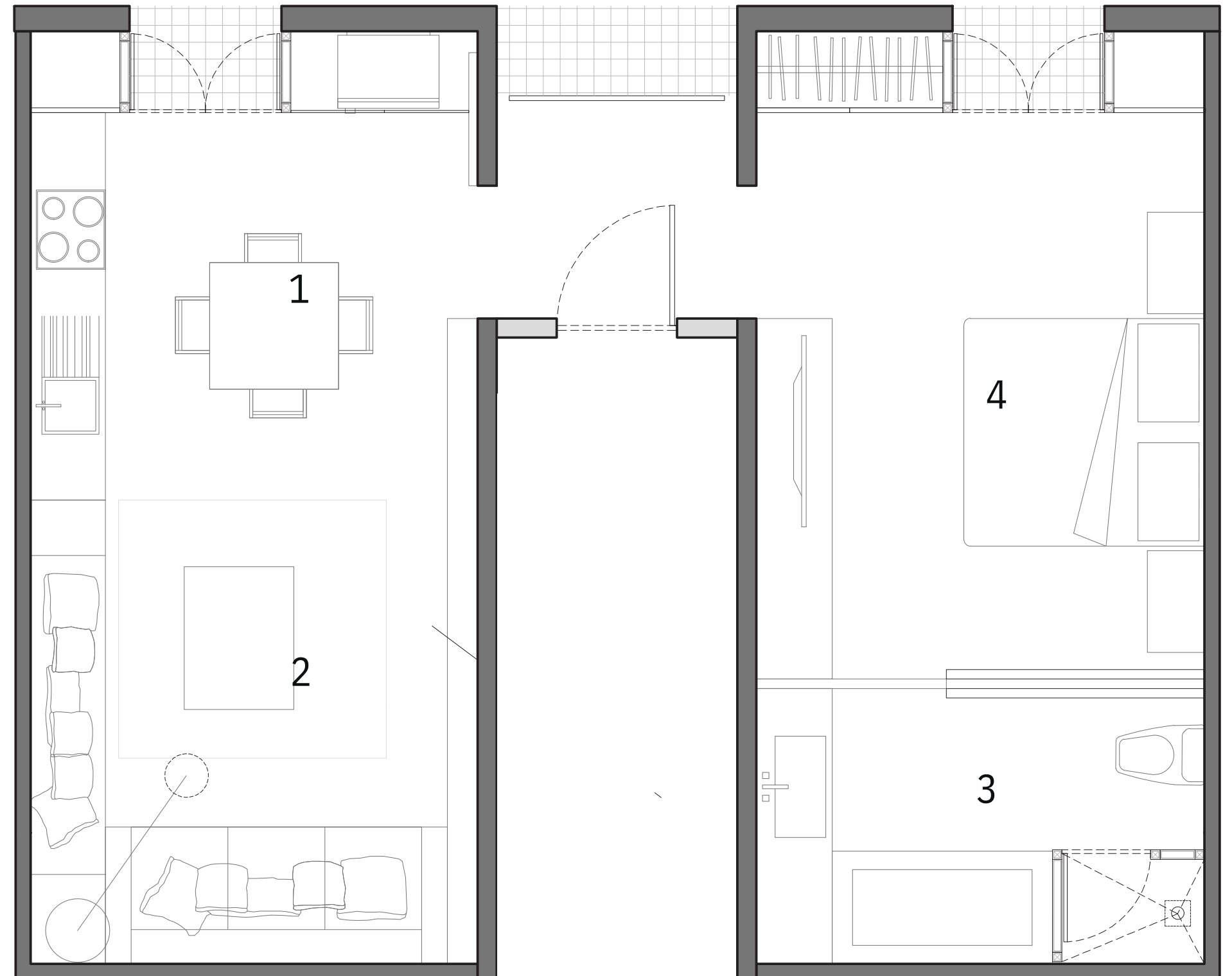


Planta Prototipo D2 - D5

ÁREA 60.82 M2

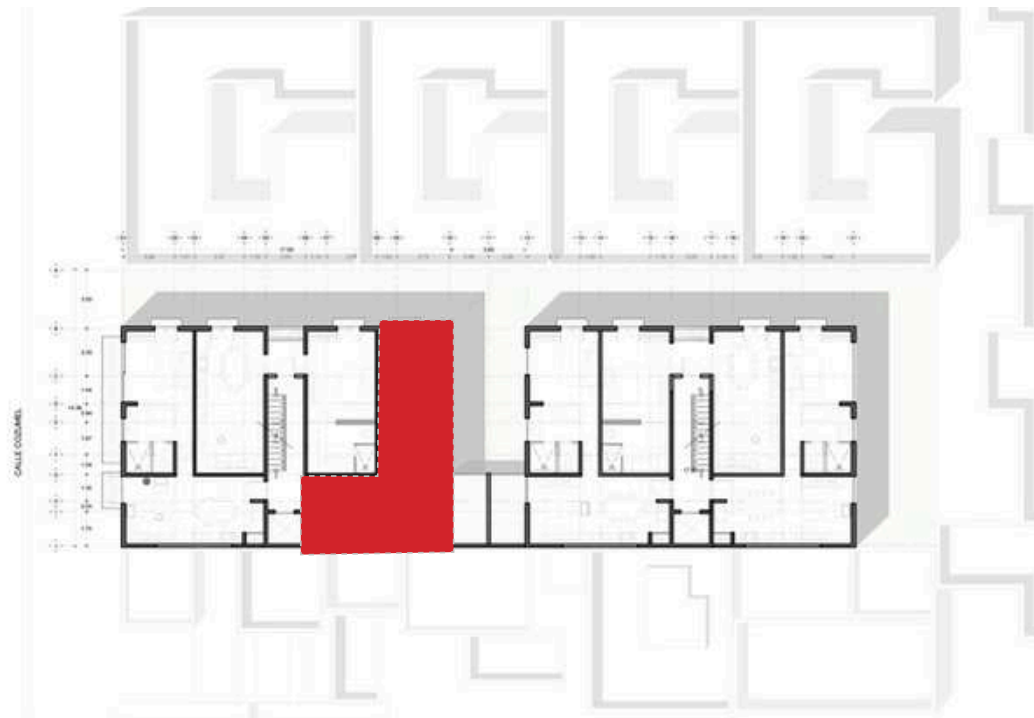


1. Cocina - Comedor
2. Sala
3. Baño
4. Recámara

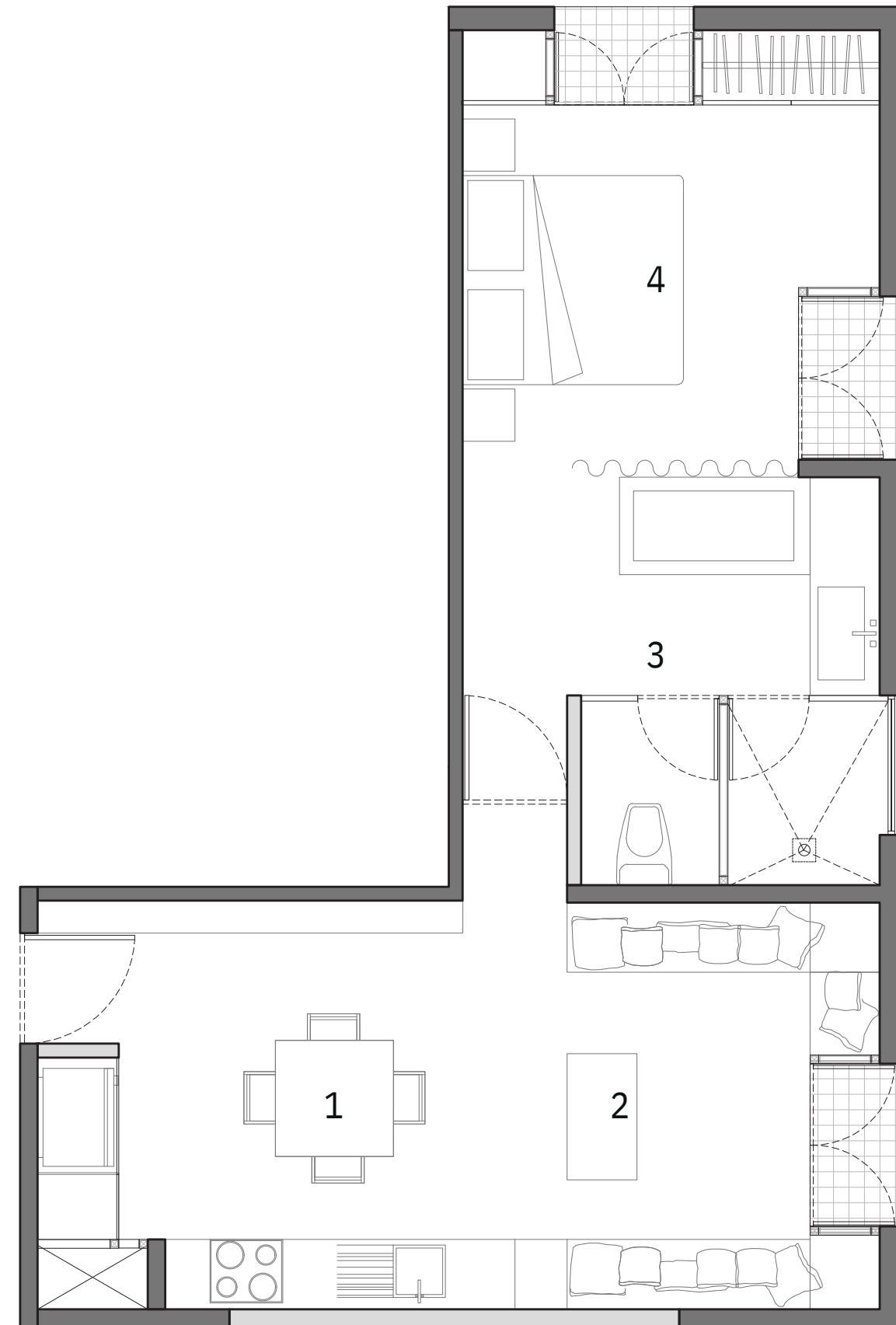


Planta Prototipo D3

ÁREA 57.42 M2

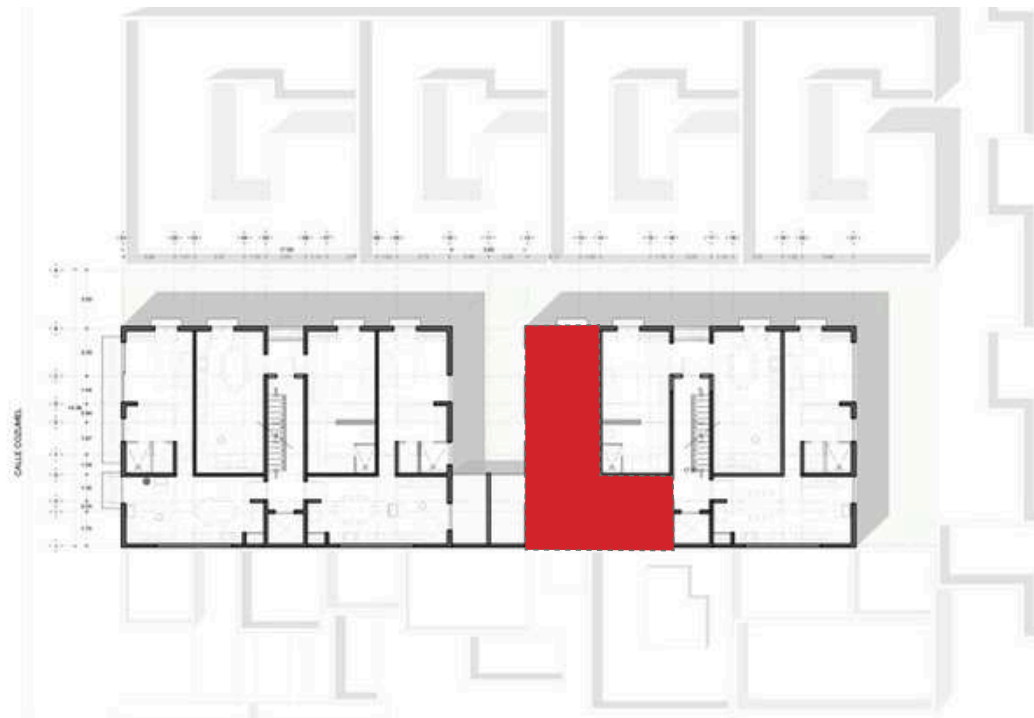


1. Cocina - Comedor
2. Sala
3. Baño
4. Recámara

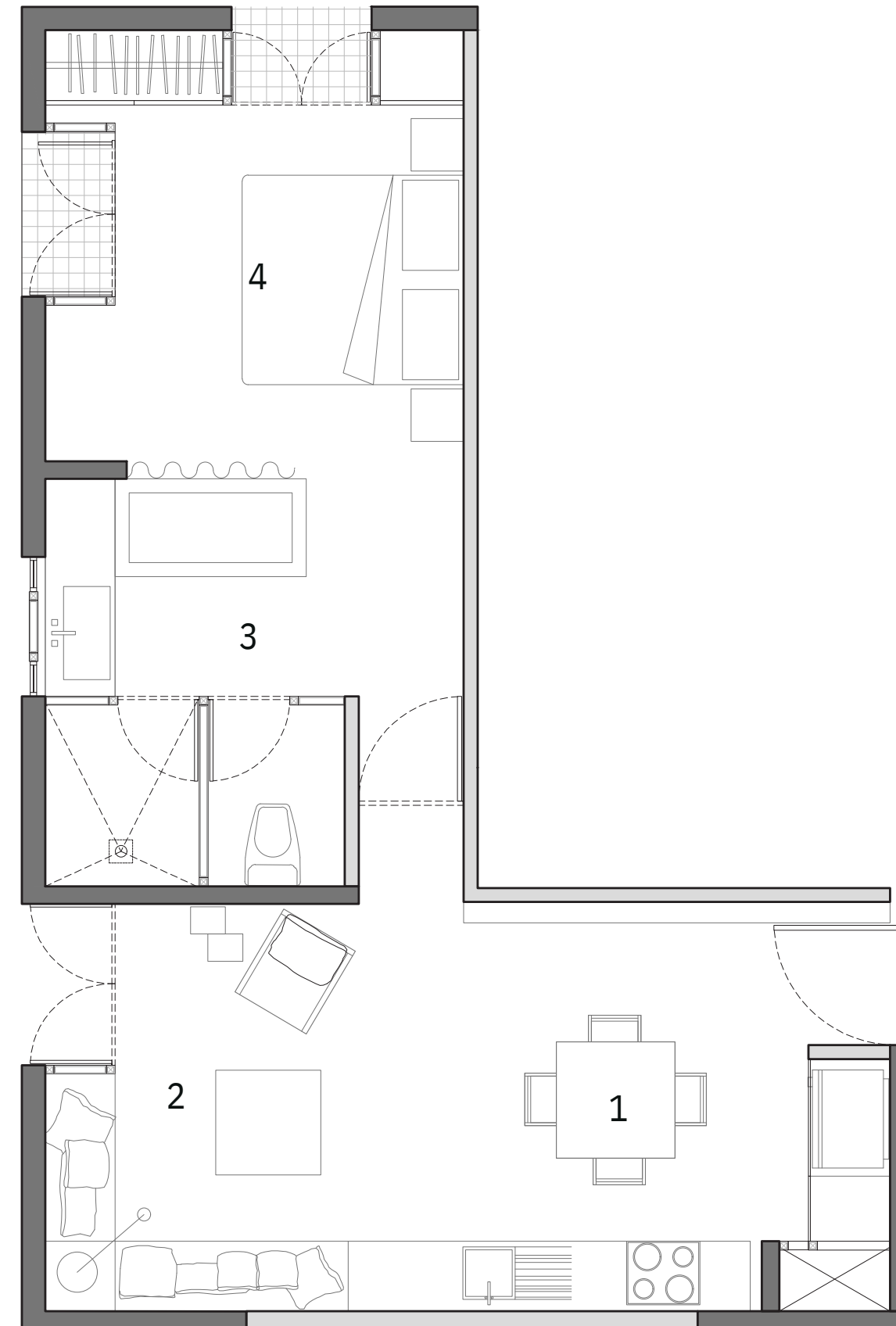


Planta Prototipo D4

ÁREA 57.42 M2

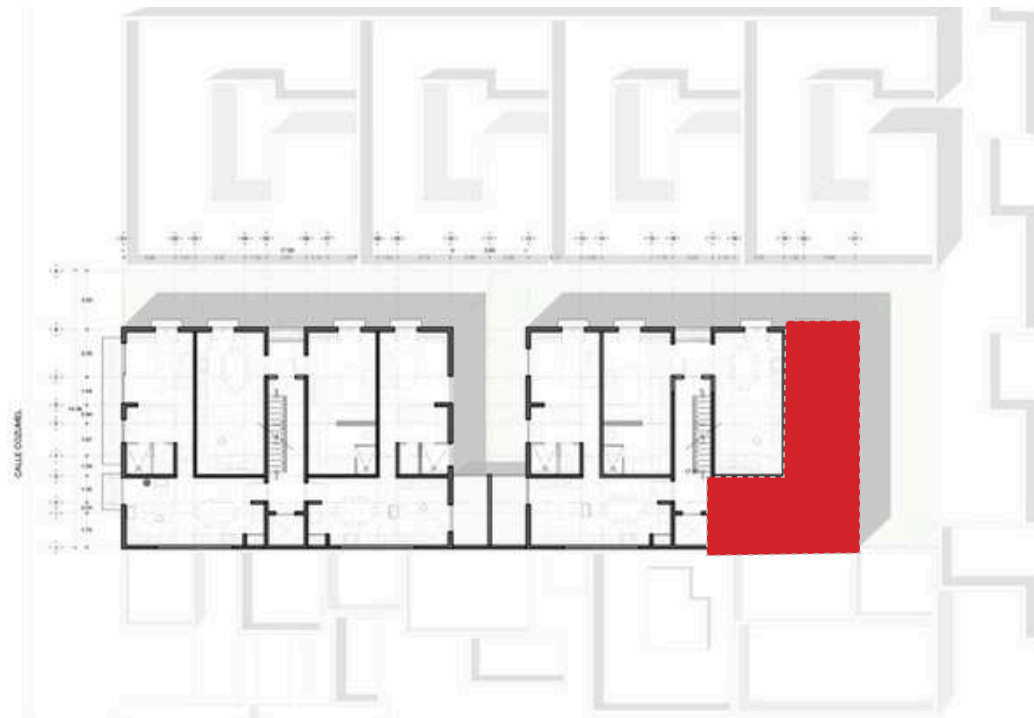


1. Cocina - Comedor
2. Sala
3. Baño
4. Recámara

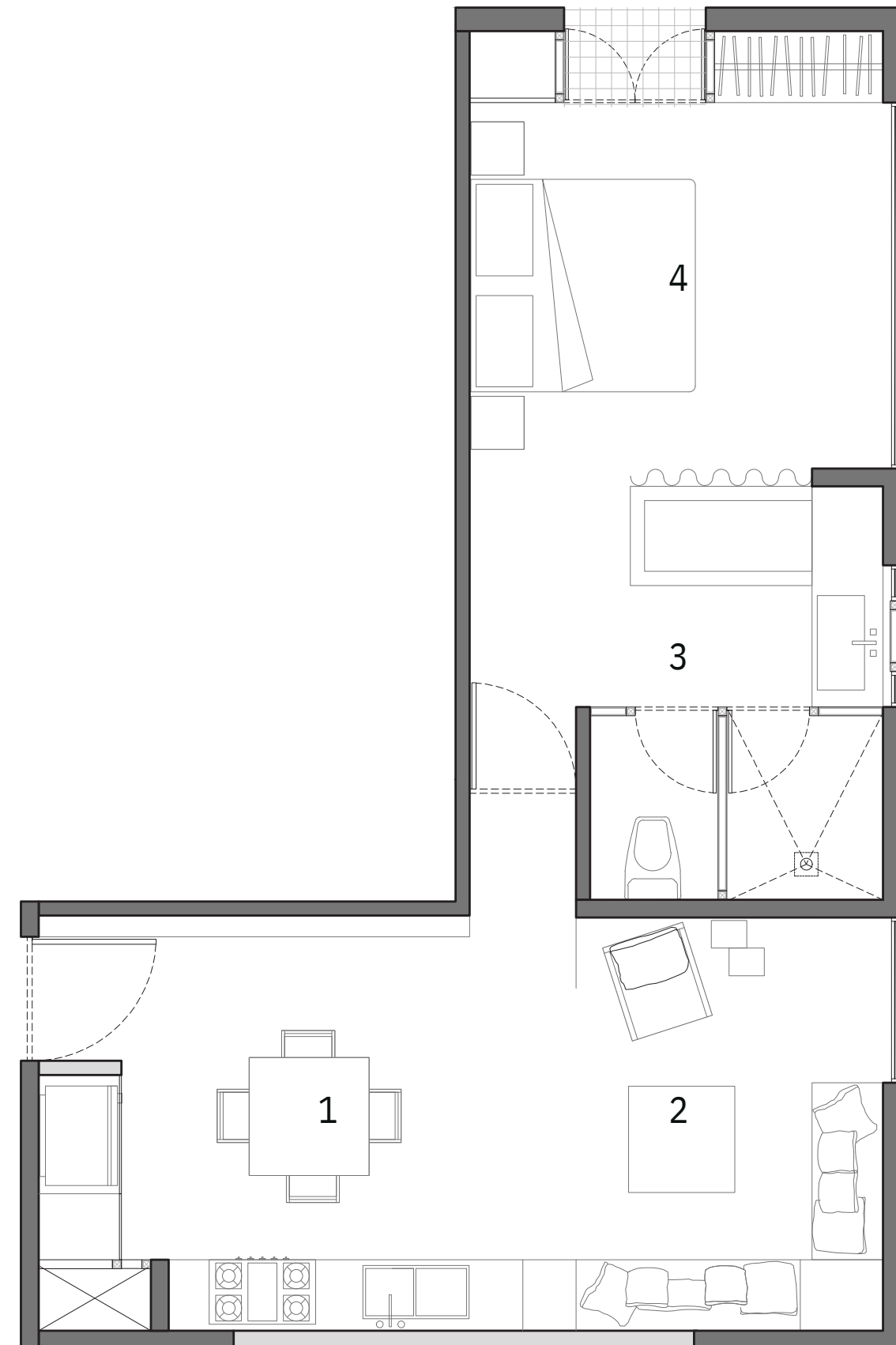


Planta Prototipo D6

ÁREA 56.34 M2



1. Cocina - Comedor
2. Sala
3. Baño
4. Recámara





Architectural rendering of a modern building facade featuring three balconies with dark metal railings. The balconies are illuminated from within, showing people and furniture. The building has a light-colored, textured facade with large windows and a central vertical element.

Architectural rendering of a modern building facade featuring a row of windows. The windows are illuminated from within, showing people and furniture. The building has a light-colored, textured facade.

Architectural rendering of a modern building facade featuring a large glass storefront. The storefront is illuminated from within, showing a display of clothing and a sign that says "NOW OPEN". The building has a light-colored, textured facade.