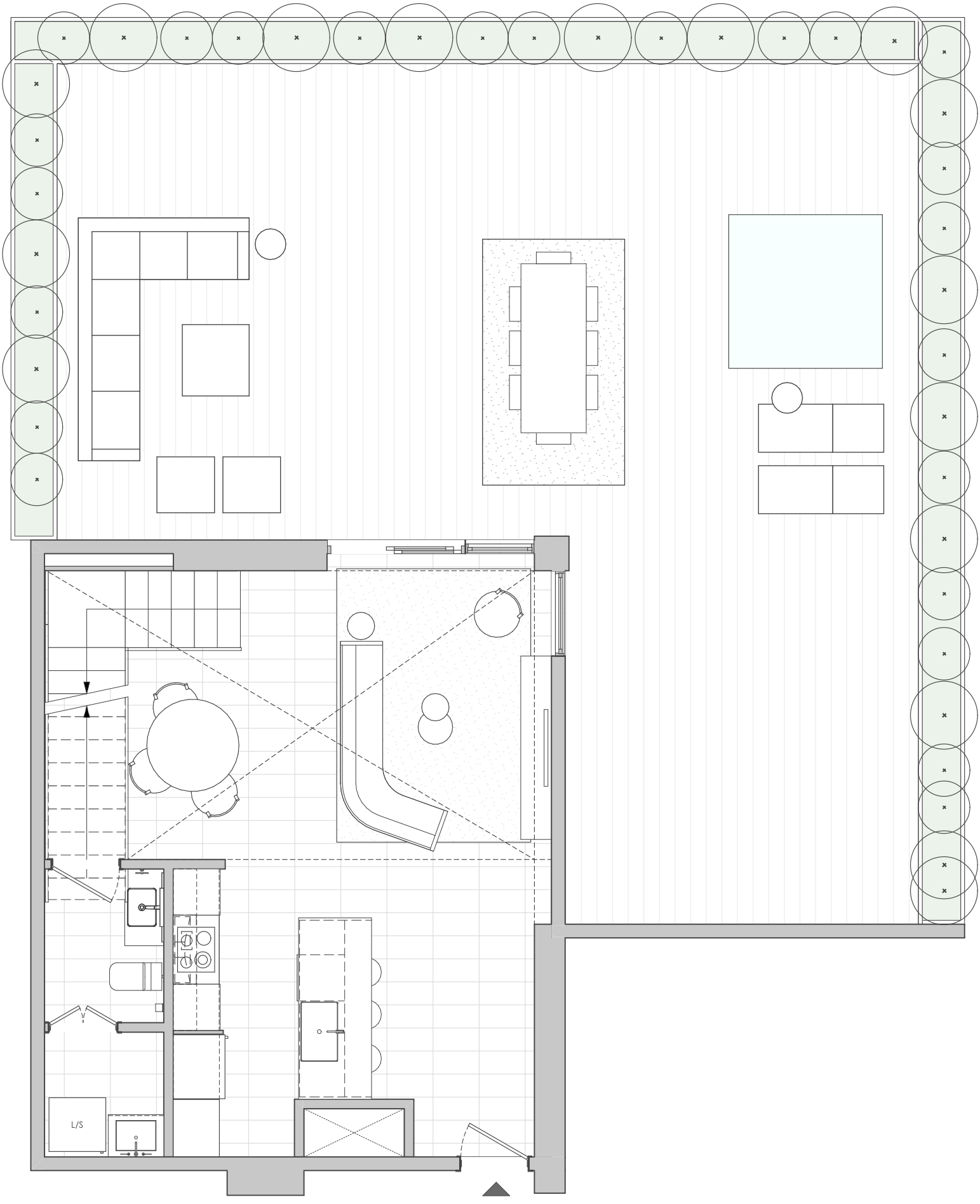


PLANTA ARQUITECTONICA NIVEL 1



APT 110

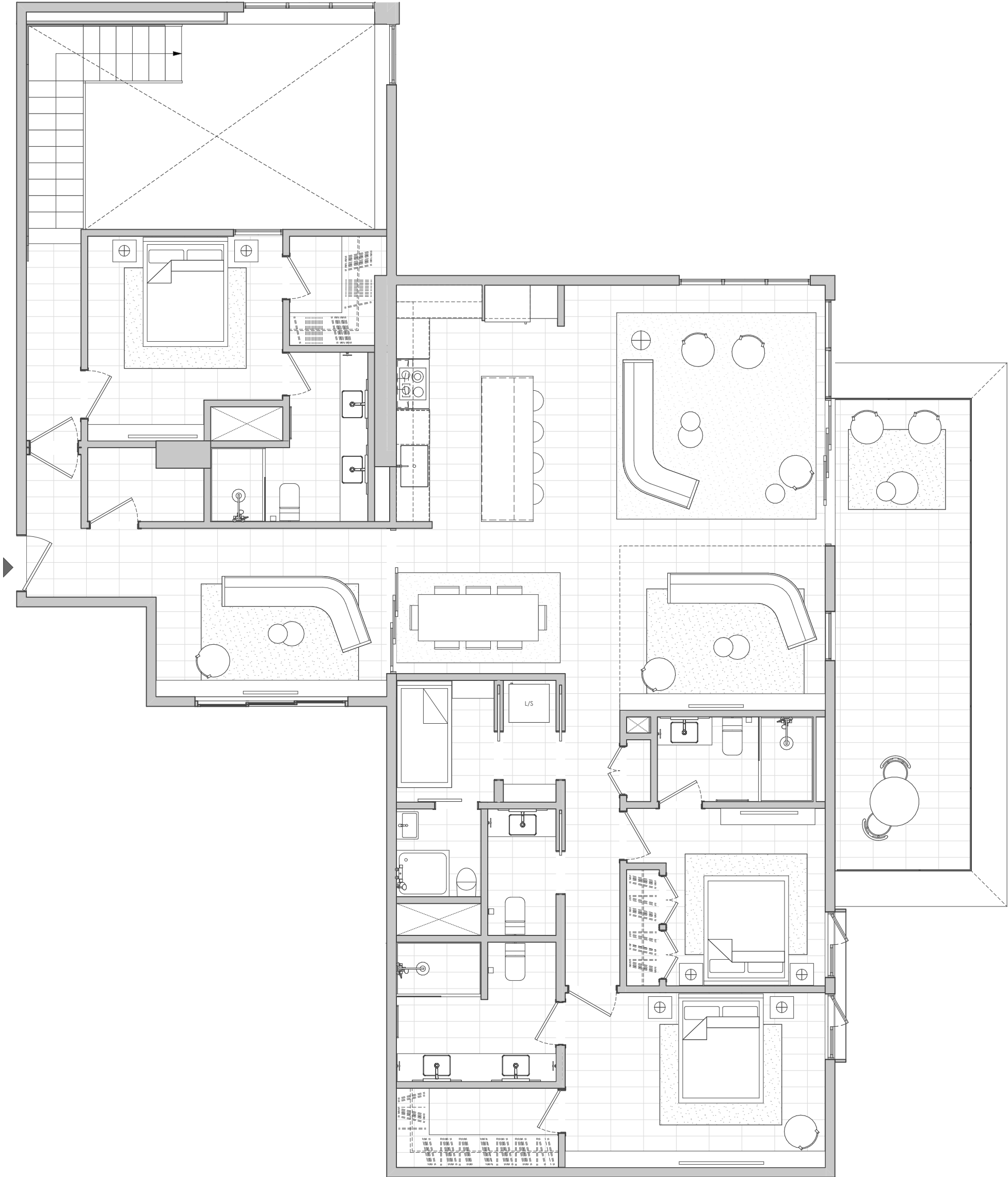
TIPO LOFT 1

NIVEL 1: 56.47 mt2

NIVEL 2: 190.10 mt2

TERRAZA + BALCON: 46.38 mt2 + 22.13mt2

PLANTA ARQUITECTONICA NIVEL 2



APT 110

TIPO LOFT 1

NIVEL 1: 56.47 mt²

NIVEL 2: 190.10 mt²

TERRAZA + BALCON: 46.38 mt² + 22.13mt²