

RESIDENCE A1

SPECIFICATIONS ESPECIFICACIONES

3 BEDROOMS / RECÁMARAS
4 BATHROOMS / BAÑOS
STUDIO / ESTUDIO

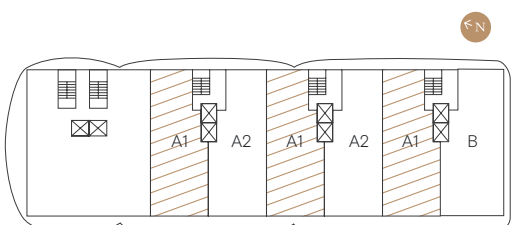
AC AREA / INTERIOR
1,927 FT² / 179 M²

TERRACE / BALCÓN
388 FT² / 36 M²

TOTAL AREA / ÁREA TOTAL
2,314 FT² / 215 M²



THOMPSON®
PUERTO VALLARTA
HOTEL & RESIDENCES



*TERRACES MAY VARY UNIT BY UNIT AND BY FLOOR

THOMPSONVALLARTA.COM



The dimensions stated are measured based on the boundaries of the exterior walls and the centerline of the common inner walls and may vary from the dimensions that would be determined using the description and definition of "Unit," used by the Developer in construction which generally only includes the interior airspace between the perimeter walls and excludes interior structural components. Note that the measurements of the rooms set out in this plan are usually taken at the largest points of each one of the rooms (as if the room were a perfect rectangle), without accounting for cutouts. Consequently, the actual room area will typically be less than the product obtained by multiplying the indicated length by the width. All dimensions are approximate and vary with actual construction and all floors and development plans are subject to change. Renderings depict furnishings not included with purchase, but which may be available at an additional cost. The layout of furniture is a suggestion and the uses of space shown are not guaranteed upon completion. Consult the Developer's prospectus to learn what is included with Unit purchase and to understand Unit dimensions. 2023 © InterCam Banco, S.A., I.B.M., Fideicomiso F/4736 with all rights reserved.

RESIDENCE A2

SPECIFICATIONS ESPECIFICACIONES

3 BEDROOMS / RECÁMARAS
4 BATHROOMS / BAÑOS
STUDIO / ESTUDIO

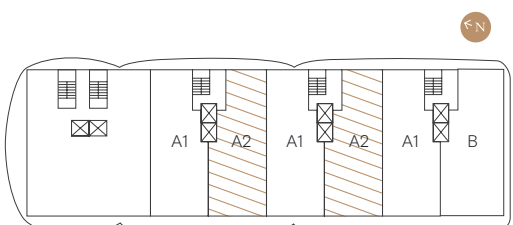
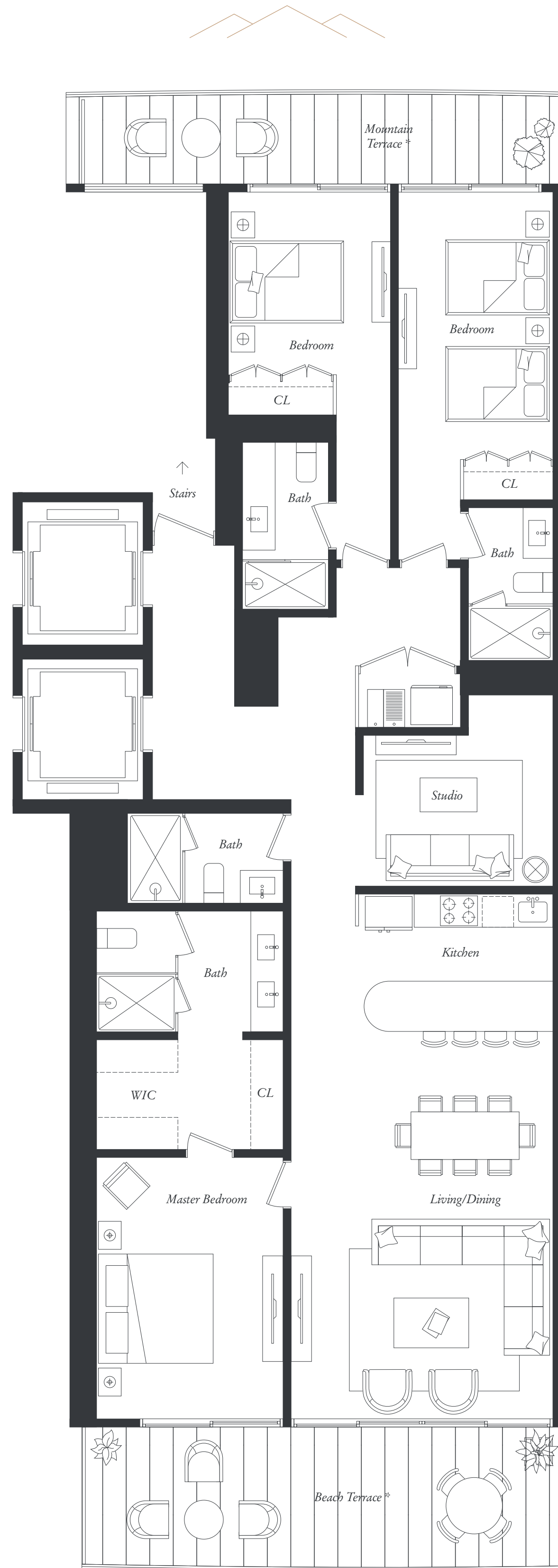
AC AREA / INTERIOR
1,927 FT² / 179 M²

TERRACE / BALCÓN
388 FT² / 36 M²

TOTAL AREA / ÁREA TOTAL
2,314 FT² / 215 M²



THOMPSON®
PUERTO VALLARTA
HOTEL & RESIDENCES



*TERRACES MAY VARY UNIT BY UNIT AND BY FLOOR

The dimensions stated are measured based on the boundaries of the exterior walls and the centerline of the common inner walls and may vary from the dimensions that would be determined using the description and definition of "Unit," used by the Developer in construction which generally only includes the interior airspace between the perimeter walls and excludes interior structural components. Note that the measurements of the rooms set out in this plan are usually taken at the largest points of each one of the rooms (as if the room were a perfect rectangle), without accounting for cutouts. Consequently, the actual room area will typically be less than the product obtained by multiplying the indicated length by the width. All dimensions are approximate and vary with actual construction and all floors and development plans are subject to change. Renderings depict furnishings not included with purchase, but which may be available at an additional cost. The layout of furniture is a suggestion and the uses of space shown are not guaranteed upon completion. Consult the Developer's prospectus to learn what is included with Unit purchase and to understand Unit dimensions. 2023 © InterCam Banco, S.A., I.B.M., Fideicomiso F/4736 with all rights reserved.

THOMPSONVALLARTA.COM



RESIDENCE B



THOMPSON®
PUERTO VALLARTA
HOTEL & RESIDENCES

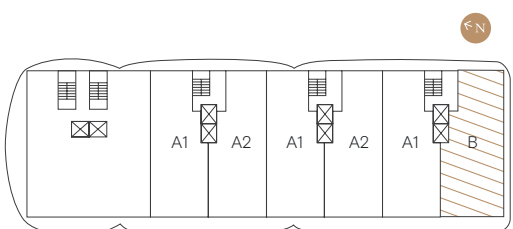
SPECIFICATIONS
ESPECIFICACIONES

4 BEDROOMS / RECÁMARAS
4 BATHROOMS / BAÑOS

AC AREA / INTERIOR
2,282 FT² / 212 M²

TERRACE / BALCÓN
721 FT² / 67 M²

TOTAL AREA / ÁREA TOTAL
3,003 FT² / 279 M²



*TERRACES MAY VARY UNIT BY UNIT AND BY FLOOR

THOMPSONVALLARTA.COM



The dimensions stated are measured based on the boundaries of the exterior walls and the centerline of the common inner walls and may vary from the dimensions that would be determined using the description and definition of "Unit," used by the Developer in construction which generally only includes the interior airspace between the perimeter walls and excludes interior structural components. Note that the measurements of the rooms set out in this plan are usually taken at the largest points of each one of the rooms (as if the room were a perfect rectangle), without accounting for cutouts. Consequently, the actual room area will typically be less than the product obtained by multiplying the indicated length by the width. All dimensions are approximate and vary with actual construction and all floors and development plans are subject to change. Renderings depict furnishings not included with purchase, but which may be available at an additional cost. The layout of furniture is a suggestion and the uses of space shown are not guaranteed upon completion. Consult the Developer's prospectus to learn what is included with Unit purchase and to understand Unit dimensions. 2023 © InterCam Banco, S.A., I.B.M., Fideicomiso F/4736 with all rights reserved.

RESIDENCE C



THOMPSON®
PUERTO VALLARTA
HOTEL & RESIDENCES

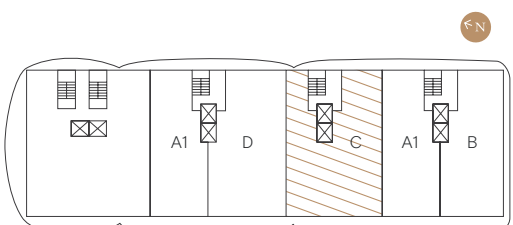
SPECIFICATIONS
ESPECIFICACIONES

4 BEDROOMS / RECÁMARAS
5 BATHROOMS / BAÑOS
SERVICE ROOM / RECAMARA DE SERVICIO
STUDIO / ESTUDIO

AC AREA / INTERIOR
3,208 FT² / 298 M²

TERRACE / BALCÓN
721 FT² / 67 M²

TOTAL AREA / ÁREA TOTAL
3,929 FT² / 365 M²



*TERRACES MAY VARY UNIT BY UNIT AND BY FLOOR

THOMPSONVALLARTA.COM



The dimensions stated are measured based on the boundaries of the exterior walls and the centerline of the common inner walls and may vary from the dimensions that would be determined using the description and definition of "Unit," used by the Developer in construction which generally only includes the interior airspace between the perimeter walls and excludes interior structural components. Note that the measurements of the rooms set out in this plan are usually taken at the largest points of each one of the rooms (as if the room were a perfect rectangle), without accounting for cutouts. Consequently, the actual room area will typically be less than the product obtained by multiplying the indicated length by the width. All dimensions are approximate and vary with actual construction and all floors and development plans are subject to change. Renderings depict furnishings not included with purchase, but which may be available at an additional cost. The layout of furniture is a suggestion and the uses of space shown are not guaranteed upon completion. Consult the Developer's prospectus to learn what is included with Unit purchase and to understand Unit dimensions. 2023 © InterCam Banco, S.A., I.B.M., Fideicomiso F/4736 with all rights reserved.

RESIDENCE D



THOMPSON®
PUERTO VALLARTA
HOTEL & RESIDENCES

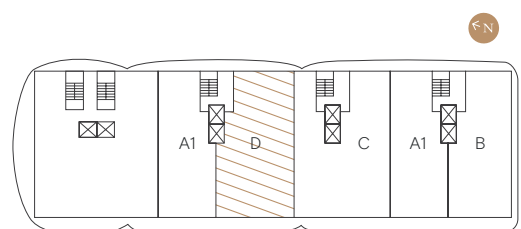
SPECIFICATIONS
ESPECIFICACIONES

4 BEDROOMS / RECÁMARAS
5 BATHROOMS / BAÑOS
PANTRY / DESPENSA
SERVICE ROOM / RECAMARA DE SERVICIO

AC AREA / INTERIOR
2,788 FT² / 259 M²

TERRACE / BALCÓN
495 FT² / 46 M²

TOTAL AREA / ÁREA TOTAL
3,283 FT² / 305 M²



*TERRACES MAY VARY UNIT BY UNIT AND BY FLOOR

THOMPSONVALLARTA.COM



The dimensions stated are measured based on the boundaries of the exterior walls and the centerline of the common inner walls and may vary from the dimensions that would be determined using the description and definition of "Unit," used by the Developer in construction which generally only includes the interior airspace between the perimeter walls and excludes interior structural components. Note that the measurements of the rooms set out in this plan are usually taken at the largest points of each one of the rooms (as if the room were a perfect rectangle), without accounting for cutouts. Consequently, the actual room area will typically be less than the product obtained by multiplying the indicated length by the width. All dimensions are approximate and vary with actual construction and all floors and development plans are subject to change. Renderings depict furnishings not included with purchase, but which may be available at an additional cost. The layout of furniture is a suggestion and the uses of space shown are not guaranteed upon completion. Consult the Developer's prospectus to learn what is included with Unit purchase and to understand Unit dimensions. 2023 © Intercom Banco, S.A., I.B.M., Fideicomiso F/4736 with all rights reserved.