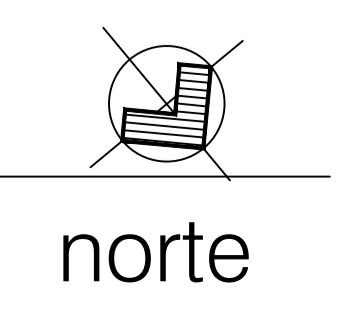
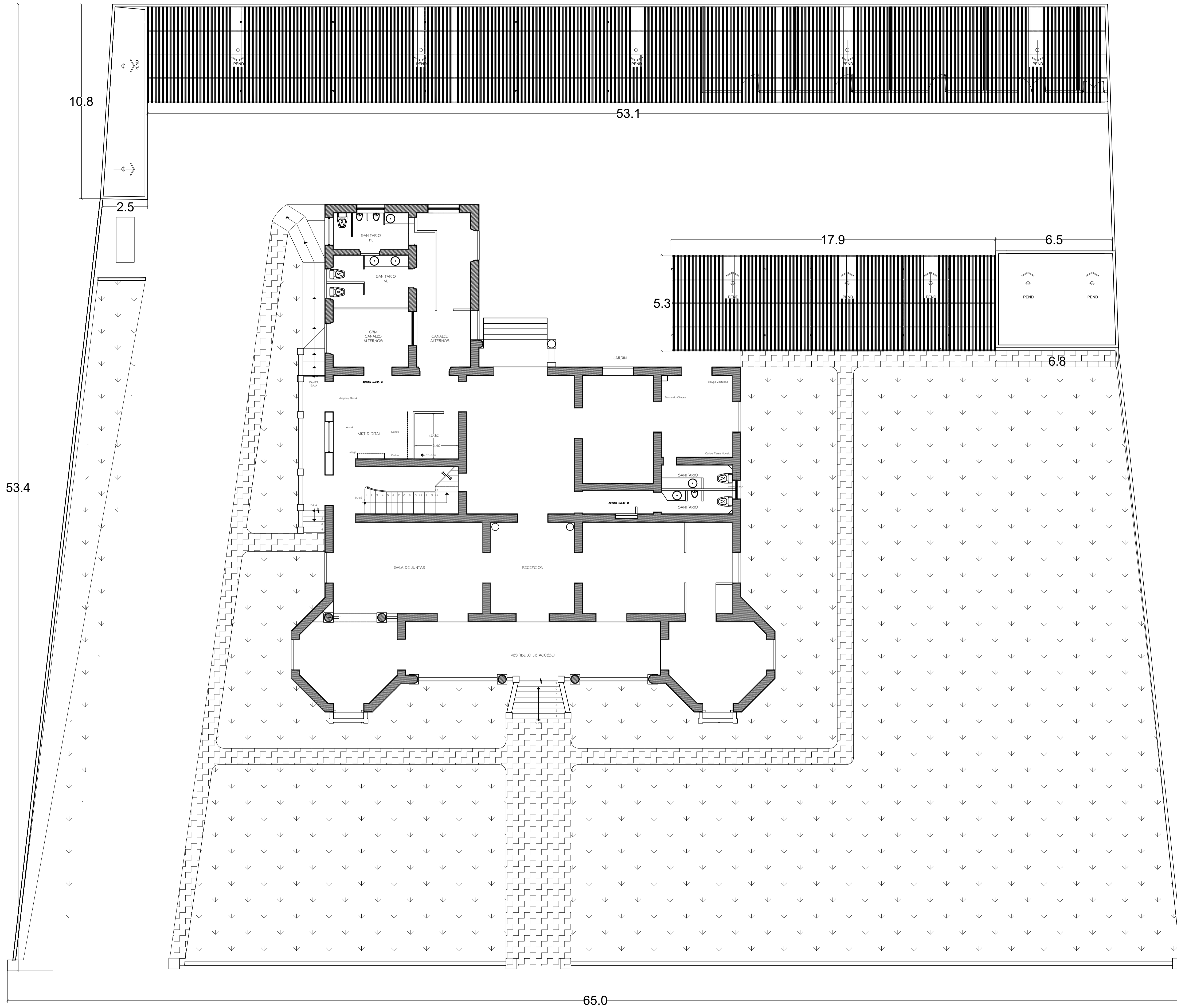
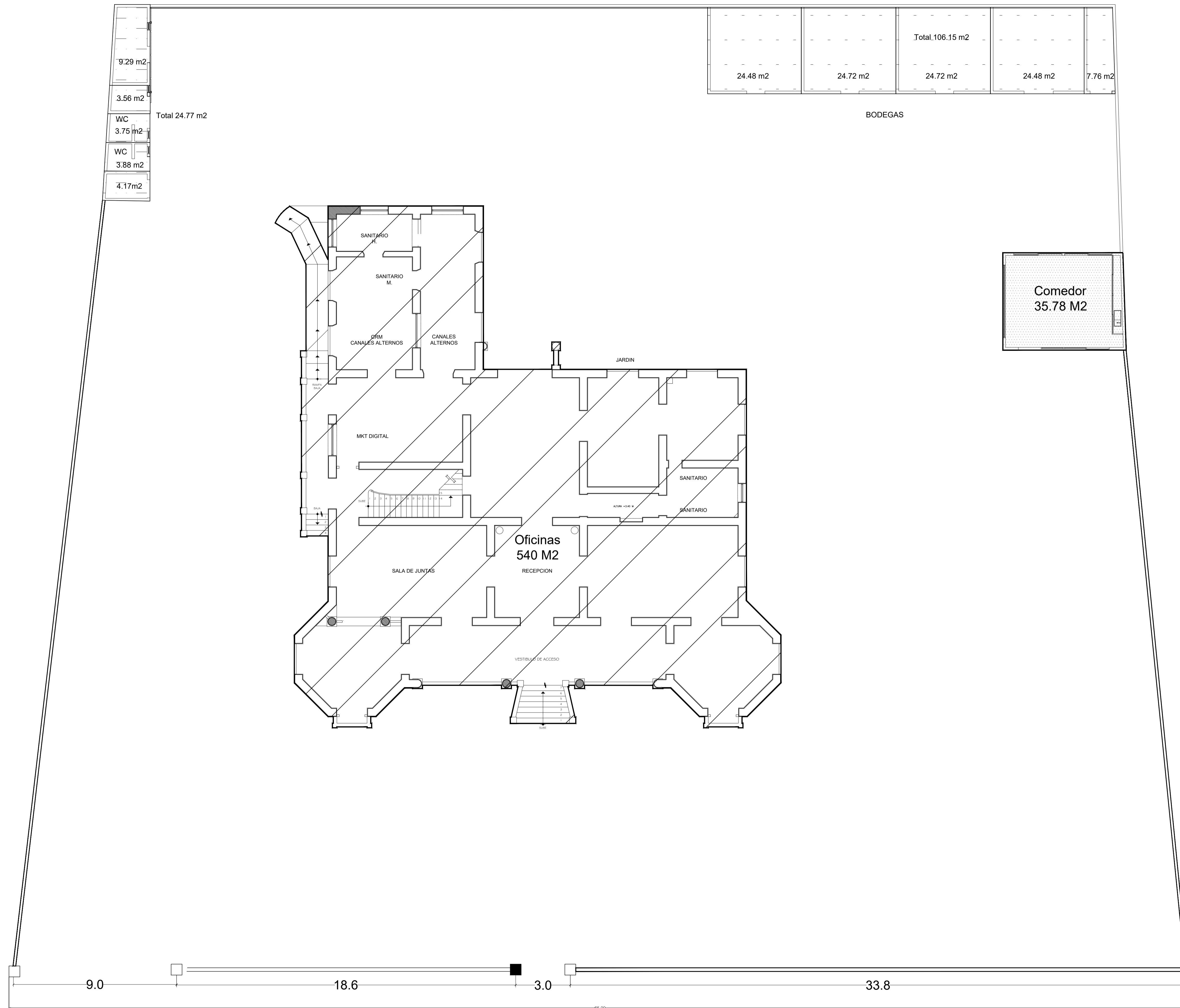


**2**

**Planta Baja**  
Corrección JUNIO 2022







9.29 m2
3.56 m2
WC 3.75 m2
WC 3.88 m2
4.17m2

Total 24.77 m2

24.48 m2	24.72 m2	Total 106.15 m2	24.48 m2	7.76 m2
----------	----------	-----------------	----------	---------

BODEGAS

Comedor  
35.78 M2

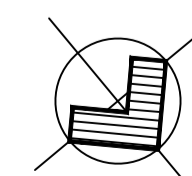


Área total 3188 m2

**2**

**PREDIO m2**

corrección JUNIO 2022



norte