

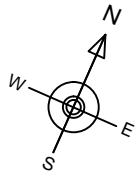


**TEPUY CANAIMA**  
*EN JUAN DOLIO*

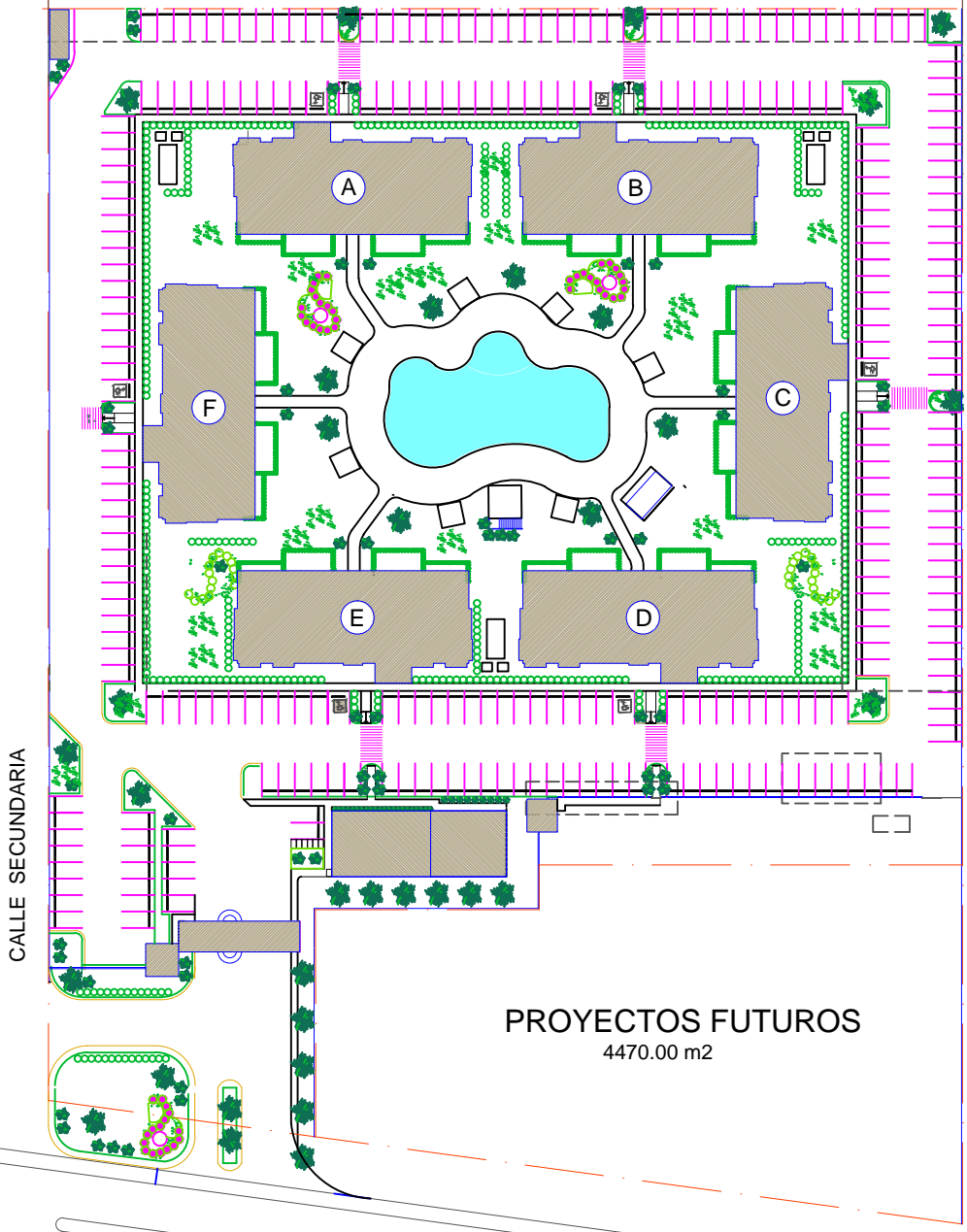
**TEPUY**



# UBICACION TEPUY CANAIMA



PROYECTOS FUTUROS

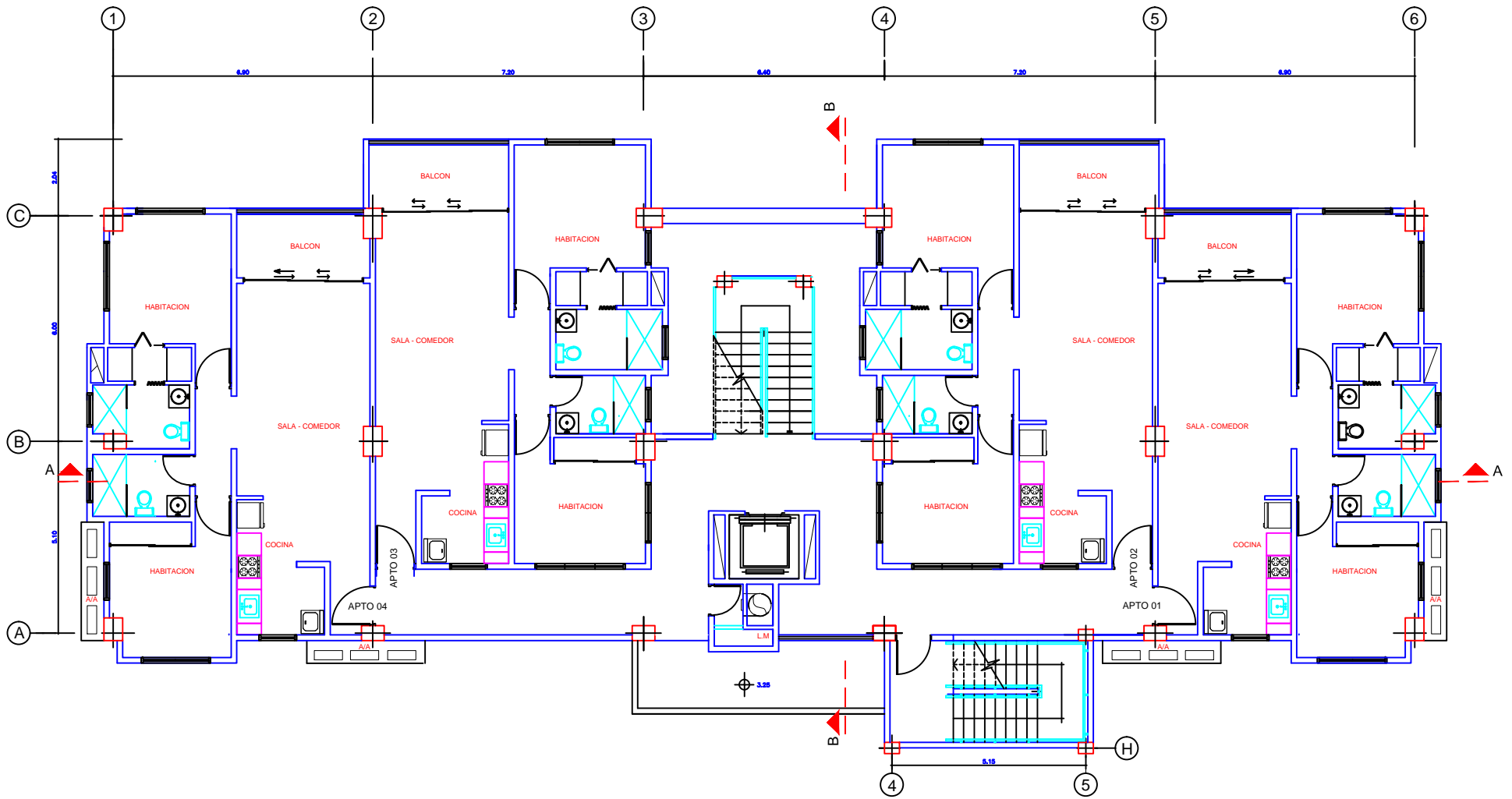


CALLE SECUNDARIA

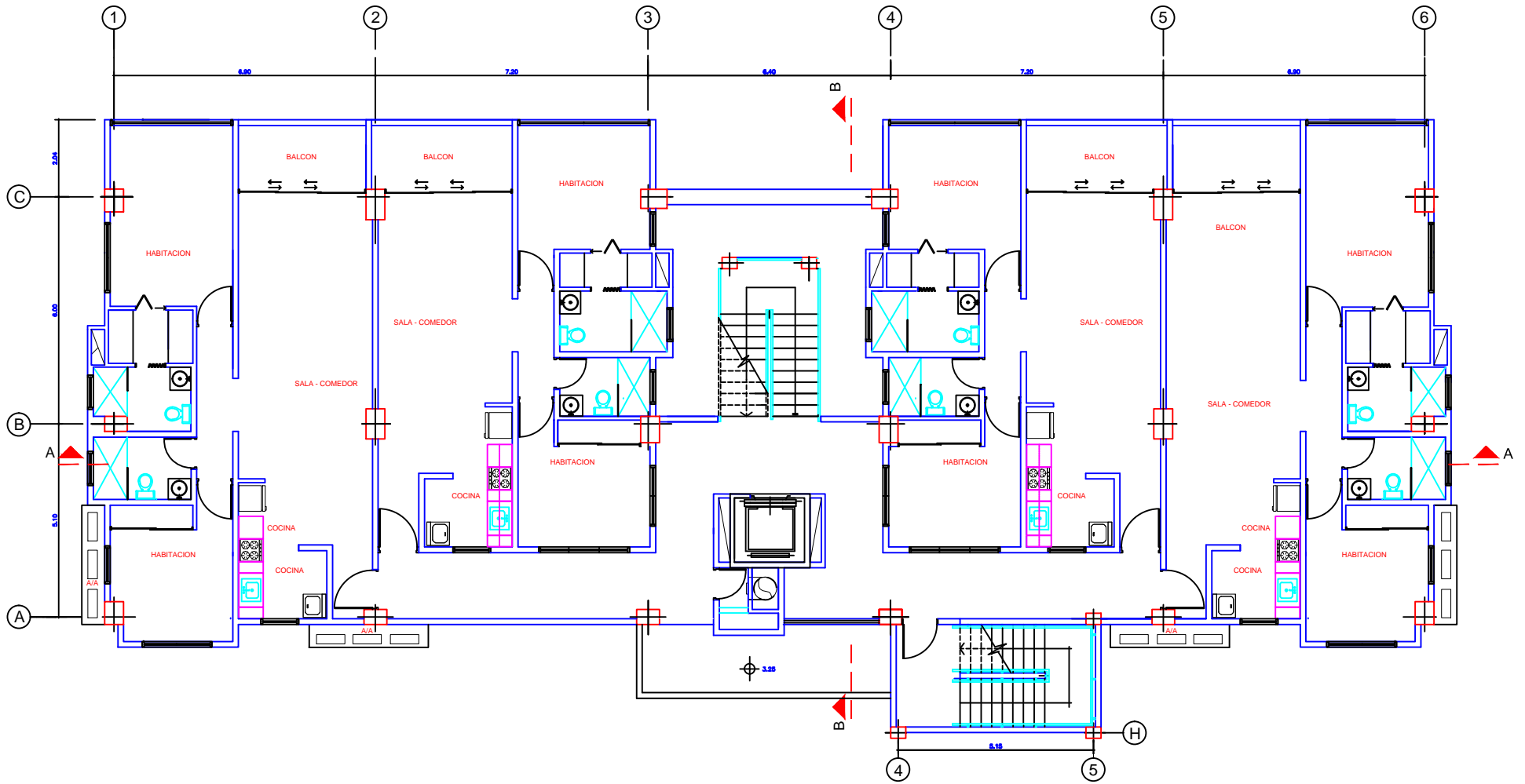
PROYECTOS FUTUROS  
4470.00 m2

BOULEVAR DE JUAN DOLIO

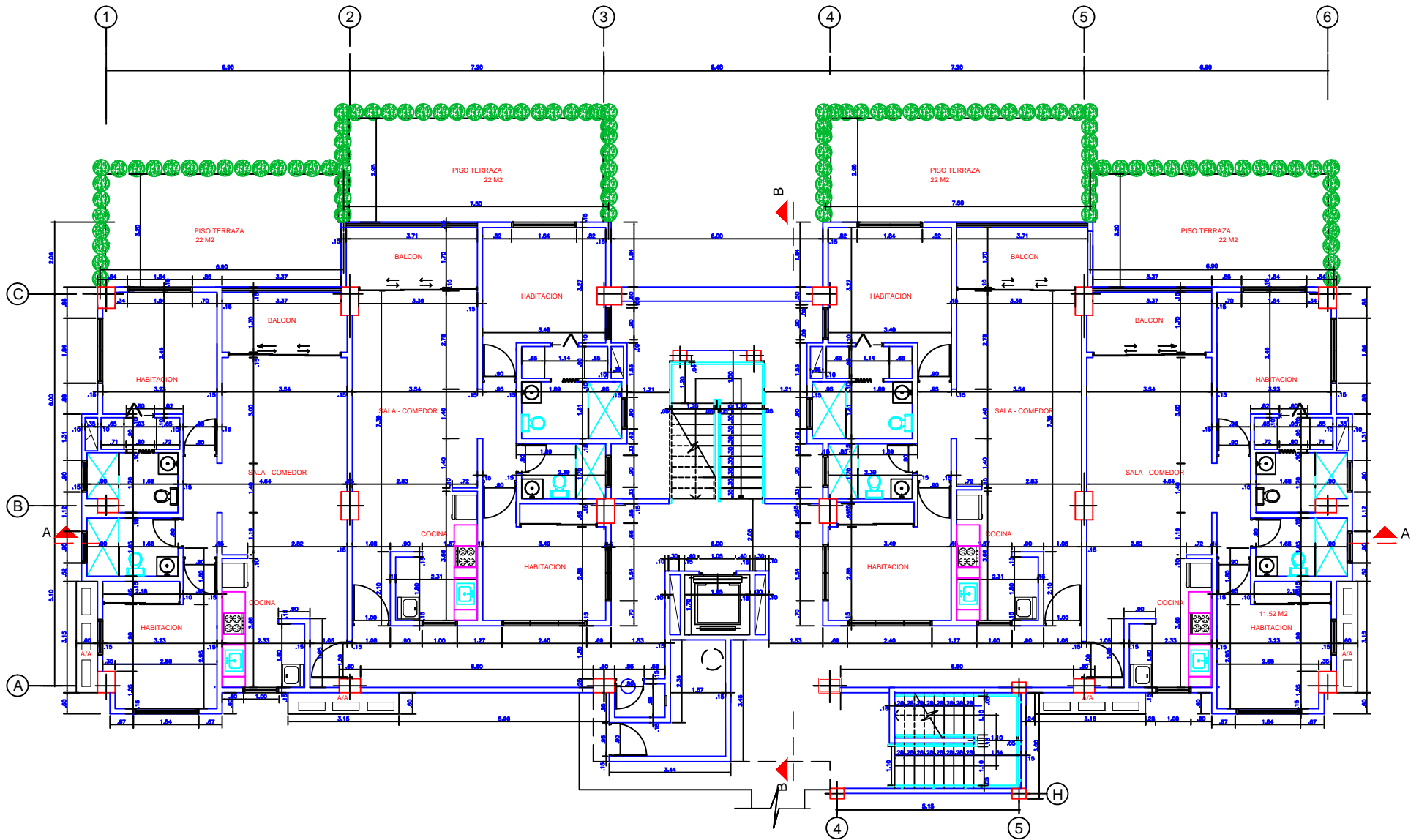
PLANTA DE CONJUNTO TEPUY CANAIMA



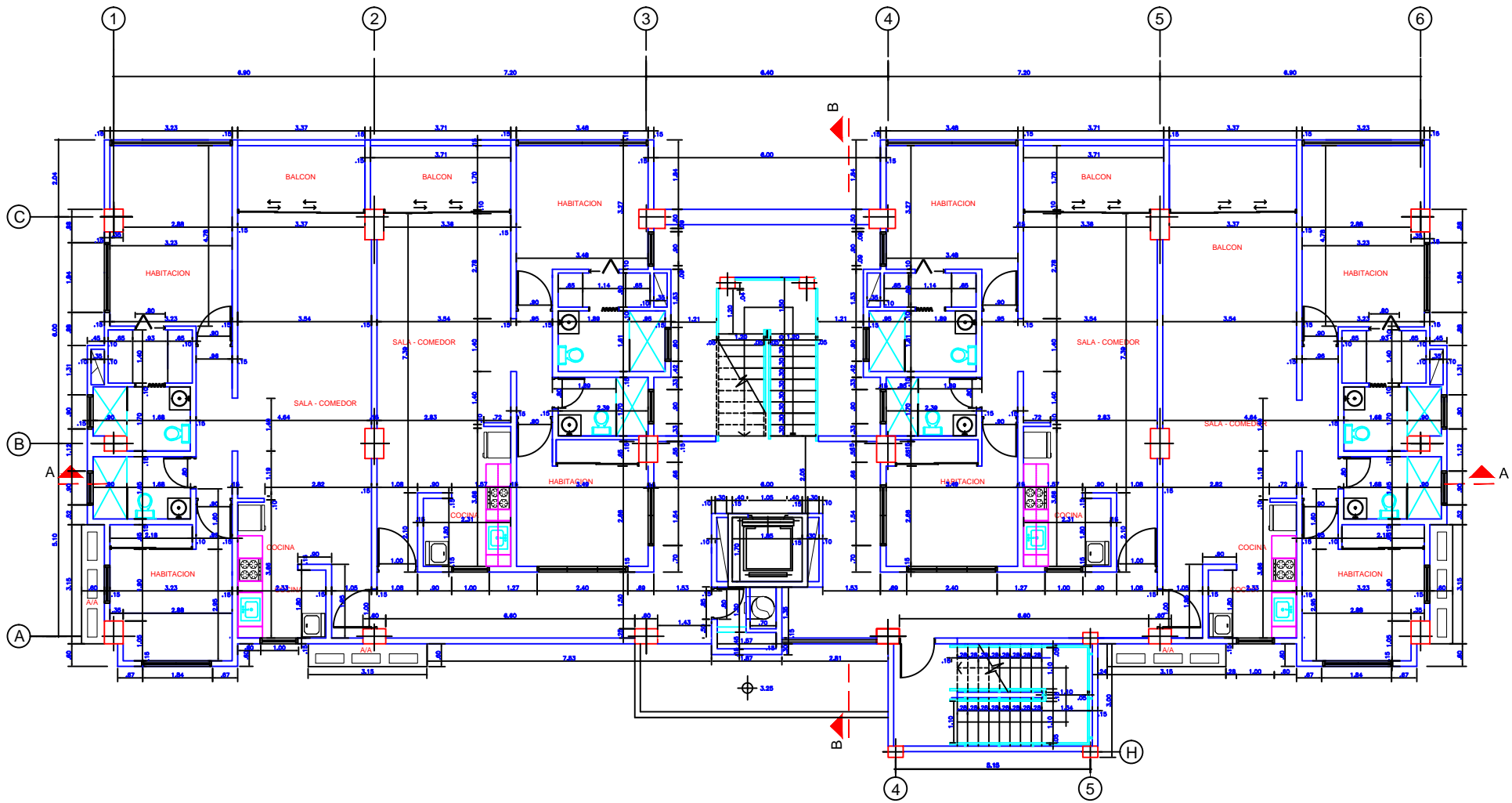
PLANTA TIPO PISOS 2-3-4-5-6



PLANTA PISO 7



PLANTA DIMENSIONADA PISO 1 (NIVEL TIERRA)



PLANTA DIMENSIONADA PISO 7