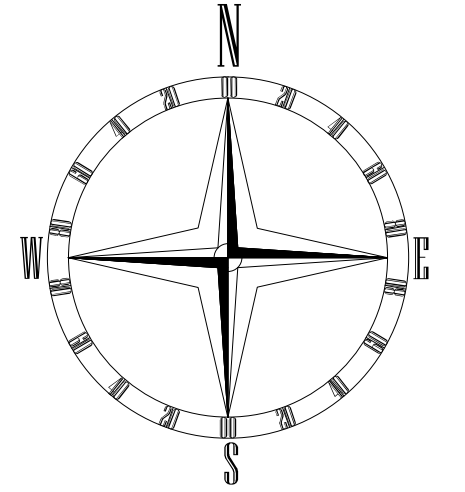


CROQUIS DE LOCALIZACION



PLANTA TOPOGRAFICA - POLIGONO UTM
"LEV. AREA DE INTERES PREDIO URBANO
 UBICACION : BLVD. ANDRES SERRA ROJAS ESQUINA Av. 9a. SUR ORIENTE.
 AL ORIENTE SUR DE TUXTLA GUTIERREZ, CHIAPAS.



SIMBOLOGIA

	POLIGONO DE INTERES
	AUX 1 BANCO DE NIVEL
	CFE POSTE CFE
	VIALIDAD
	MALLA CICLON
	POLIGONO DE INTERÉS
	SENTIDO VIAL
	LUMINARIA
	POZO DE VISITA RED DE DRENAJE MUNICIPAL
	REGISTRO ELECTRICO
	POSTE DE TELMEX
	ARBOL MEDIANO DE LA ZONA

PLANTA TOPOGRAFICA

LEVANTO.
 ING. CARLOS MARVIN VELAZQUEZ CASTELLANOS
 RESPONSABLE DE BRIGADAS

REVISO .

ING. RUTH CRISTINA MORALES HERNANDEZ.
 ADMINISTRADORA UNICA
 CED. PROF. 11595997

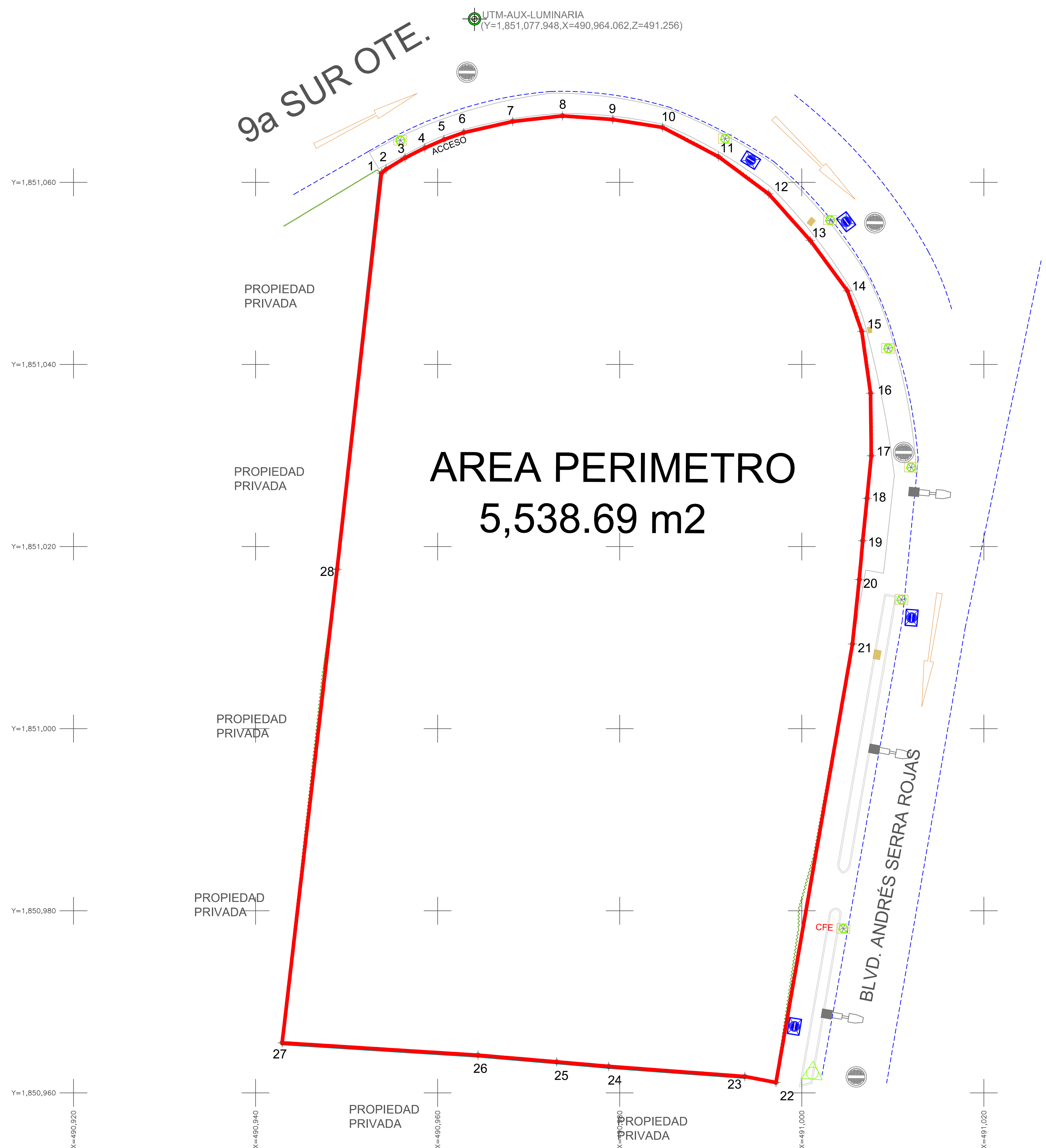


PLANO DE POLIGONO PLANO ESC. 1:250

PREDIO URBANO

ESTUDIO: LEVANTAMIENTO A DETALLE PREDIO UBICADO AL SUR ORIENTE TUXTLA GTZ., CHIAPAS. PLANO No. POL-01

PROYECTO: PLANO DE POLIGONO UTM



CUADRO DE CONSTRUCCION POLIGONO UTM

LADO	EST	PV	RUMBO	DISTANCIA	V	COORDENADAS	
						Y	X
					1	1,851,061.0225	490,953.8307
1	2		N 50°44'16.37" E	0.67	2	1,851,061.4454	490,954.3480
2	3		N 58°58'08.27" E	2.43	3	1,851,062.6965	490,956.4277
3	4		N 63°19'12.11" E	2.43	4	1,851,063.7862	490,958.5963
4	5		N 66°27'48.22" E	2.30	5	1,851,064.7059	490,960.7076
5	6		N 70°42'31.06" E	2.30	6	1,851,065.4667	490,962.8813
6	7		N 77°08'15.03" E	5.50	7	1,851,066.6913	490,968.2443
7	8		N 83°37'23.09" E	5.50	8	1,851,067.3023	490,973.7114
8	9		S 85°53'05.15" E	5.55	9	1,851,066.9043	490,979.2432
9	10		S 81°00'10.84" E	5.55	10	1,851,066.0370	490,984.7211
10	11		S 62°22'02.93" E	6.90	11	1,851,062.8378	490,990.8322
11	12		S 53°28'44.34" E	6.90	12	1,851,058.7328	490,996.3755
12	13		S 41°44'01.19" E	6.86	13	1,851,053.6110	491,000.9443
13	14		S 36°24'24.52" E	6.86	14	1,851,048.0872	491,005.0178
14	15		S 19°31'21.79" E	4.71	15	1,851,043.6460	491,006.5925
15	16		S 08°04'07.27" E	6.87	16	1,851,036.8417	491,007.5571
16	17		S 00°40'01.92" E	6.87	17	1,851,029.9698	491,007.6371
17	18		S 05°43'30.54" W	4.69	18	1,851,025.3015	491,007.1691
18	19		S 05°43'30.54" W	4.69	19	1,851,020.6333	491,006.7011
19	20		S 05°12'11.76" W	4.28	20	1,851,016.3683	491,006.3127
20	21		S 05°58'09.92" W	7.11	21	1,851,009.2994	491,005.5735
21	22		S 09°53'42.60" W	48.89	22	1,850,961.1383	490,997.1723
22	23		N 79°06'09.23" W	3.49	23	1,850,961.7981	490,993.7448
23	24		N 85°45'55.39" W	15.00	24	1,850,962.9054	490,978.7905
24	25		N 84°59'29.75" W	5.73	25	1,850,963.4058	490,973.0809
25	26		N 85°10'27.45" W	8.68	26	1,850,964.1360	490,964.4308
26	27		N 86°23'11.96" W	21.55	27	1,850,965.4941	490,942.9249
27	28		N 06°36'52.50" E	52.36	28	1,851,017.5008	490,948.9557
28	1		N 06°23'28.36" E	43.79	1	1,851,061.0225	490,953.8307

SUPERFICIE = 5,538.69 m2