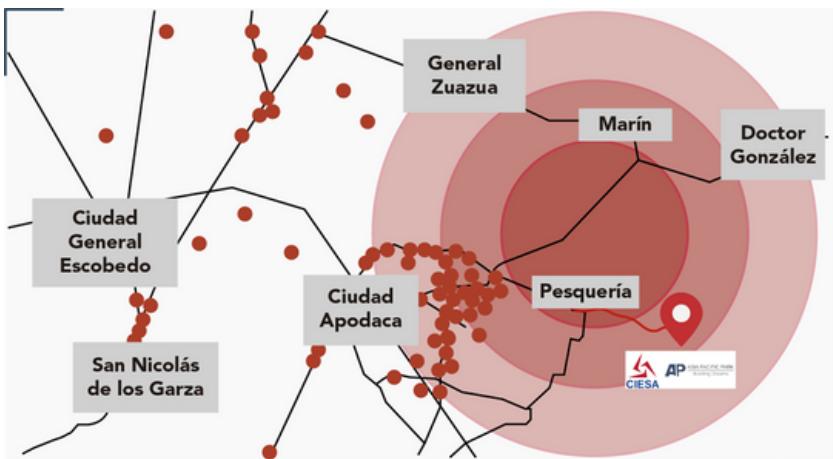


ASIA PACIFIC PARK DEC24

Available For Lease Industrial Space 6,000 M2 | Industrial Hub Pesquería | Nuevo León



Neighbors to KIA

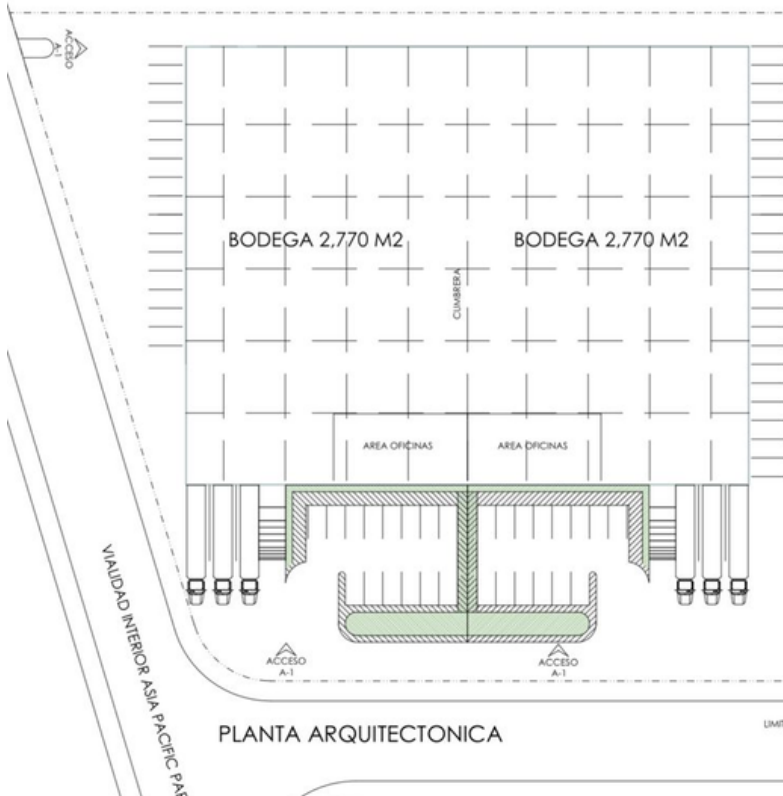
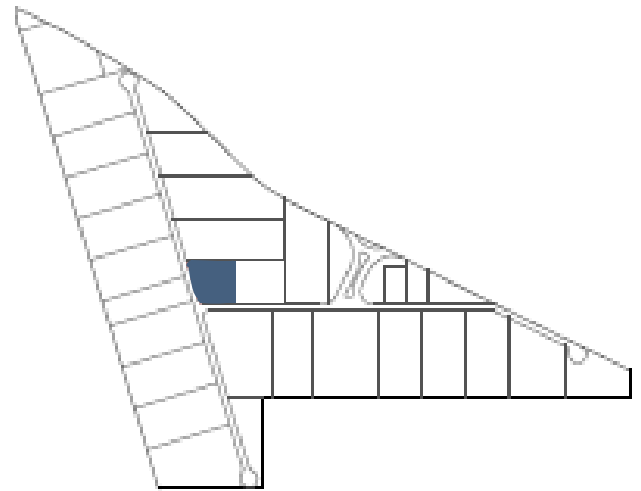
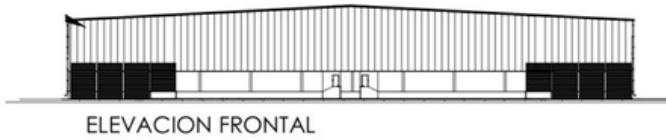
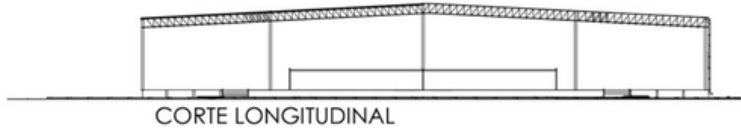


- 4 Highways direct to the USA
- 2 Highways direct to neighboring states
- 2 Highways direct to center of Mexico
- Railroad 2 km away

ASIA PACIFIC PARK24 | Available Industrial Space 6,000 M2

Industrial Hub Pesquería | Nuevo León

FLOOR PLAN



ASIA PACIFIC PARK
PESQUERIA, NUEVO LEON, MEX.

Speculative Building #8.1
Executive Draft Project

Project Specifications

Building Area :	5,534.48 M2
	5,9572.64 SQF
Total Land Area:	9,708.65 M2
	104,503.03 SQF
Parking Lots:	30
Includes offices and bathrooms	



ASIA PACIFIC PARK24 | Available Industrial Space 6,000 M2

Industrial Hub Pesquería | Nuevo León

TECHNICAL SPECS

GENERAL SPECS		
	Building	General Specifications
STRUCTURE TYPE	BUILDING TYPE	Parallel chord trusses and idlers
COVER	BUILDING TYPE	Metal Engaged Ssr Kr18 Cal. 24 With Insulation 3.
WALLS	BUILDING TYPE	3m Block and Pintro Sheet With Insulation 3"
WALL FINISHES	BUILDING TYPE	finish, tuning and vinyl painting
NATURAL LIGHT	BUILDING TYPE	Acrylic sheet and Windows on walls
FIRM INTERIOR	BUILDING TYPE	6" F´C=250 Kgs/Cm2 Concrete (Reinforced with Fiber Mesh Aditive).
FIRM EXTERIOR	BUILDING TYPE	6" F´C=250 Kgs/Cm2 Concrete (Reinforced with Fiber Mesh Aditive).
JOINT SEALS	BUILDING TYPE	Cast joint seals, control and expansion
SERVICE RAMPS	BUILDING TYPE	Considered 2 Ramps for Forklifts and 10´ X 10´ Metal Curtain
BOARDING PLATFORMS	BUILDING TYPE	Considered 2 Boarding Platforms with 10´ X 10´ Metal Curtain
STORAGE TANK	BUILDING TYPE	20,000 Lts. Capacity
MINIMUM FREE HEIGHT	BUILDING TYPE	9m free

