

Land for Sale

Riviera de Chapala - Tres Cañadas 27



Amazing panoramic view of Lake Chapala



Land: 1,256.11 M2

Front: 45.86 M

Price: \$760,455.78 Dlls

Change rate: \$18.50 pesos

ADDRESS

Carr Jocotepec-Chapala KM 57.5, Int. 27

Colonia Fraccionamiento Tres Cañadas, Ajijic, Jalisco.

0824

Circuito Medas 365

33 3342 8484

Código EB: EB-PO7942

guardiasuma@sierraprovidencia.com

AREA DESCRIPTION

North (Front): 45.86 M

East (Back): 47.28 M

South: 19.30 M

West: 59.53 M

- Within the Tres Cañadas subdivision, there are a total of 39 properties
- Irregular Shape
- Single - family zoning
- With spectacular panoramic view of Chapala Lake
- High value area
- Front setback of 3.5 meters
- COS .4 CUS .6
- Maximum of two construction levels, with a maximum height of 10 meters (Consult construction regulations)

AREA SERVICES

Fluxury subdivision with private security

- 8 minutes away from Ajijic
- 3 minutes away from La Reserva Private Club & Resort
- 5 minutes away from Piedra Barrenada (Restaurant Area)
- 45 minutes away from Guadalajara

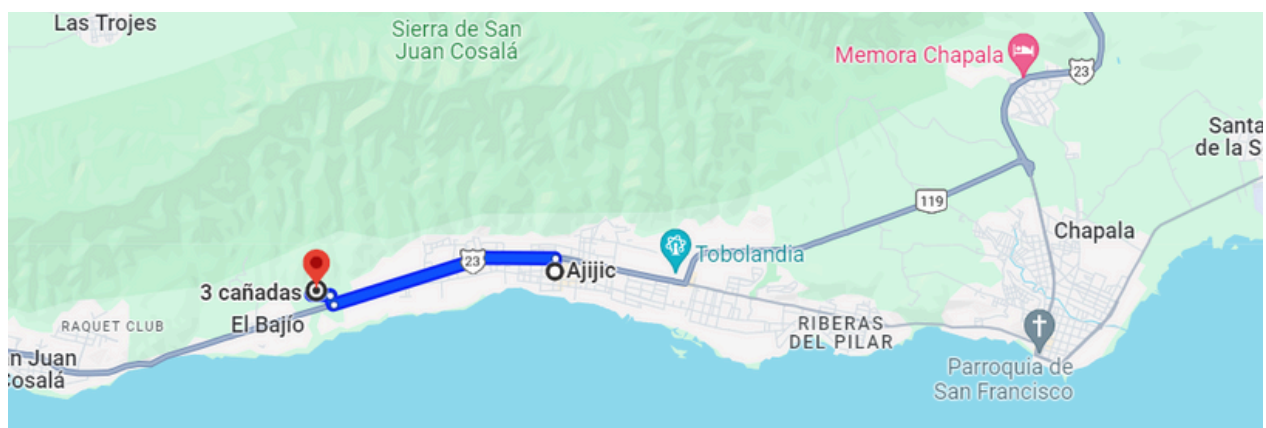
Near to:

- Restaurants
- Pharmacies
- Churches
- Ajijic and Jocotepec boardwalk

PROPERTY DESCRIPTION

Welcome to paradise by Lake Chapala! This magnificent plot of 1,256.11 square meters offers a unique opportunity to build your dream home and enjoy a breathtaking panoramic view of the picturesque Lake Chapala. With its prime location and high value, this land is a secure and promising investment. Imagine waking up each morning to the serenity of the lake and enjoying unforgettable sunsets from the comfort of your own home. This oasis provides a peaceful and relaxing environment, perfect for escaping the hustle and bustle of daily life and spending quality time with your family. Wide space to build, you can design the residence of your dreams, tailored to your tastes and needs. Whether you are looking for a vacation retreat or a place to establish your permanent home, this land has everything you need to start a new adventure by Lake Chapala.

Don't miss this unique opportunity to create unforgettable memories in a truly spectacular setting!



<https://maps.app.goo.gl/FsmXFf8pkdJHCy5y9>



AERIAL VIEW OF LAND



AERIAL VIEW OF LAND

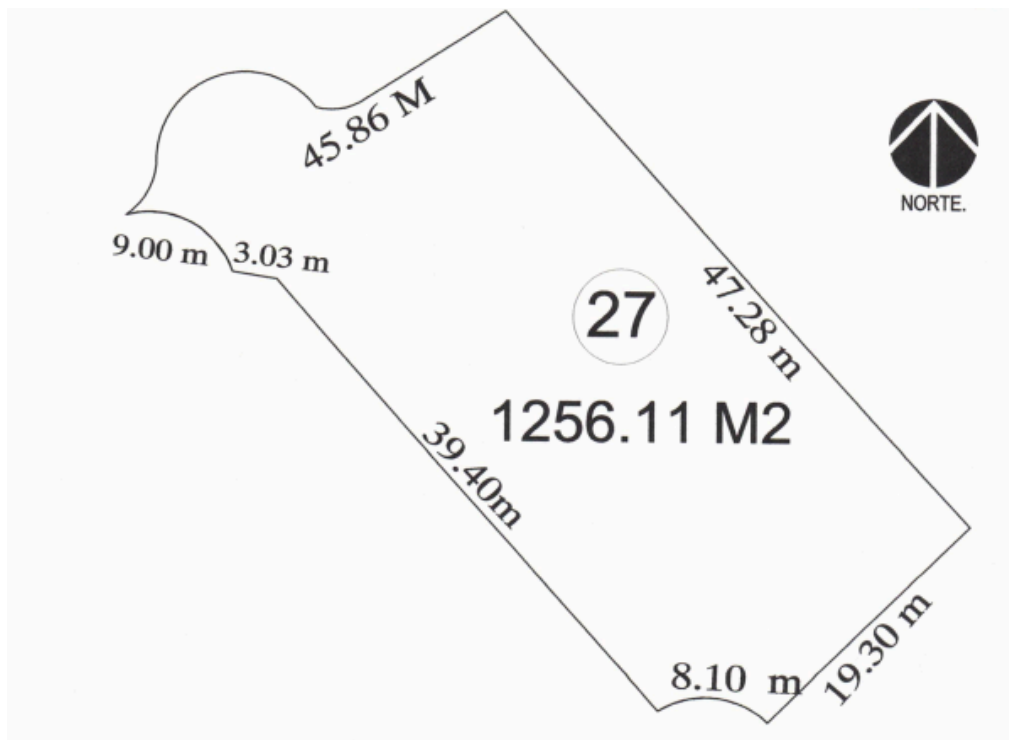
0824

Circuito Medas 365

33 3342 8484

Código EB: EB-PO7942

guardiasuma@sierraprovidencia.com



LAND PLOT



ENTRANCE



ENTRANCE



LAND



LAND



LAND VIEW



LAND VIEW



VIEW OF LAND

0824

Circuito Medas 365

33 3342 8484

Código EB: EB-PO7942

guardiasuma@sierraprovidencia.com



CONTACTO



33 3342 8484



guardiasuma@sierraprovidencia.com



Circuito Medas No. 365,
Col. Altamira 45160,
Zapopan, Jalisco, México