

santamar

I N D E X

Click and go to the corresponding slide

👉 About Akumal	2
👉 About the Project	3
👉 Location	4
👉 Characteristics	7
👉 Santamar Prime Condos	10
👉 Master Plans & Floor Plans	13
👉 Santamar Condos	25
👉 Master Plans & Floor Plans	28
👉 Additional Amenities	33

ABOUT AKUMAL

The Riviera Maya has positioned itself as one of the best beach destinations in the world. Among the different places that are part of the Riviera, is Akumal, a very quiet place surrounded by nature that offers privacy to its residents.

Akumal is a more virgin location, with a strong sense of responsibility for nature and with an authentic atmosphere of Mayan heritage.

The crystalline waters of its beaches are a natural reserve for sea turtles that come all year round to feed and nest in the underwater meadows that are just a few meters from the beach. In fact, Akumal means "**place of the turtles**" in the Mayan language.



ABOUT THE PROJECT

Private oasis in Akumal, sitting a few steps away from a secluded beach that ensures total privacy. It features an easy access to a beautiful white sandy beach.

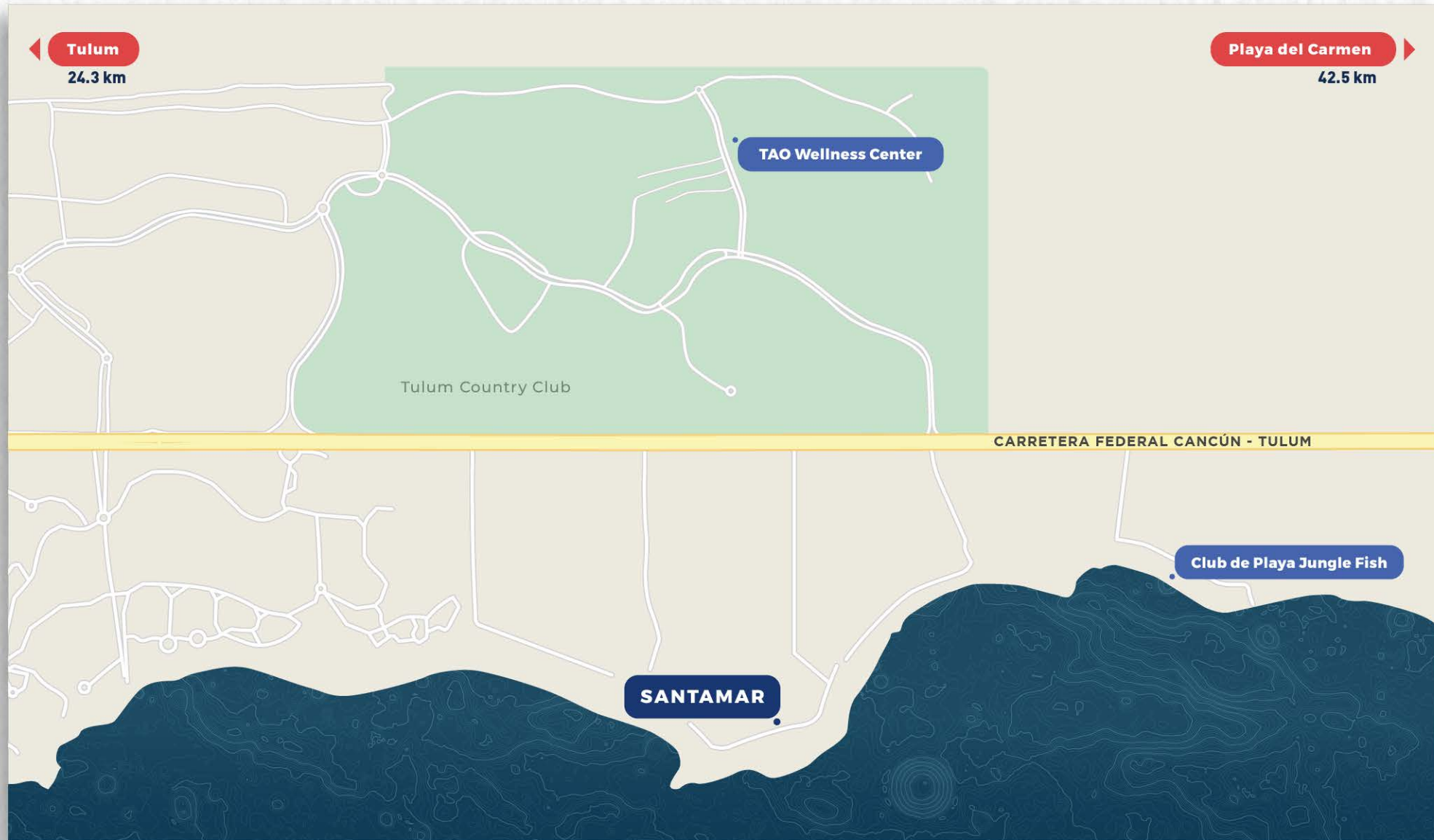
Enjoy the sunsets through the jungle or go kayaking over the crystal clear waters of the Mexican Caribbean.

An absolute dream home to delight the most discerning of tastes.

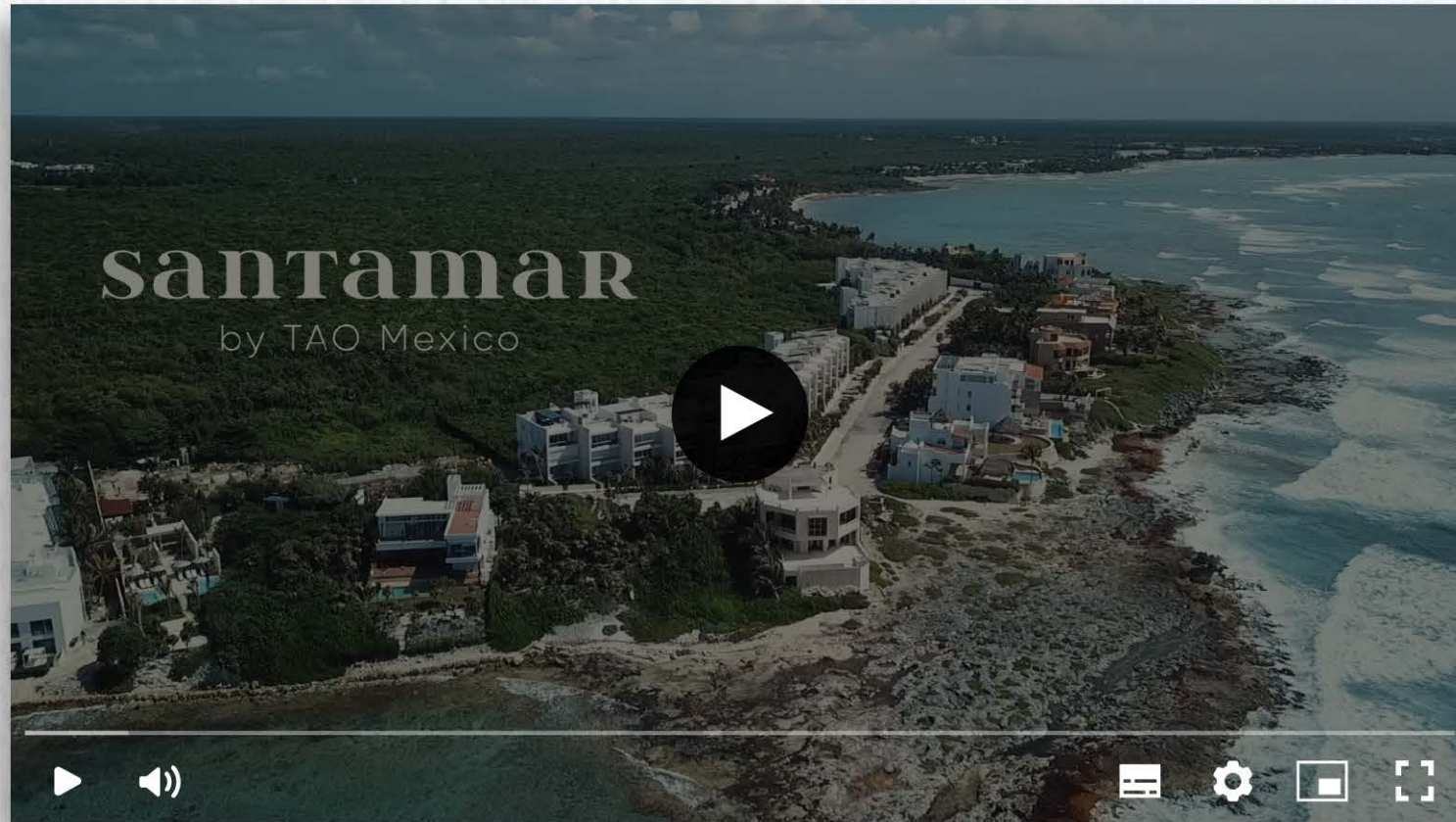


LOCATION

Santamar is located in Akumal, Q.Roo.



Click [HERE](#) for google maps location.



Click [HERE](#) to see the video.

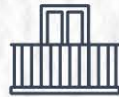


CHARACTERISTICS

2 & 3-Bedroom Condos



Private Terraces



24/7 Security



Parking Space



2 BBQ & Swimming
Pool Areas



7 Common Rooftops
with Infinity Pools



Gym



Lounge Area



Yoga Studio



Beach Club





SANTAMAR PRIME CONDOS

PRE-SALE PHASE



*Renders on this presentation are subject to minor changes without prior notice.



*Renders on this presentation are subject to minor changes without prior notice.

The background of the image is a light-colored, textured paper. On the left and right sides, there are faint, light gray architectural floor plans. The plans show various rooms, corridors, and furniture arrangements. In the bottom left corner, there is a circular feature, possibly a pool or a large table, with some surrounding structures. The overall aesthetic is clean and professional, typical of an architectural or design portfolio.

MASTER PLANS
& FLOOR PLANS

GARDEN MASTER PLAN PRIME



● GARDEN VIEW ● PARTIAL OCEAN VIEW

GARDEN FLOOR PLAN

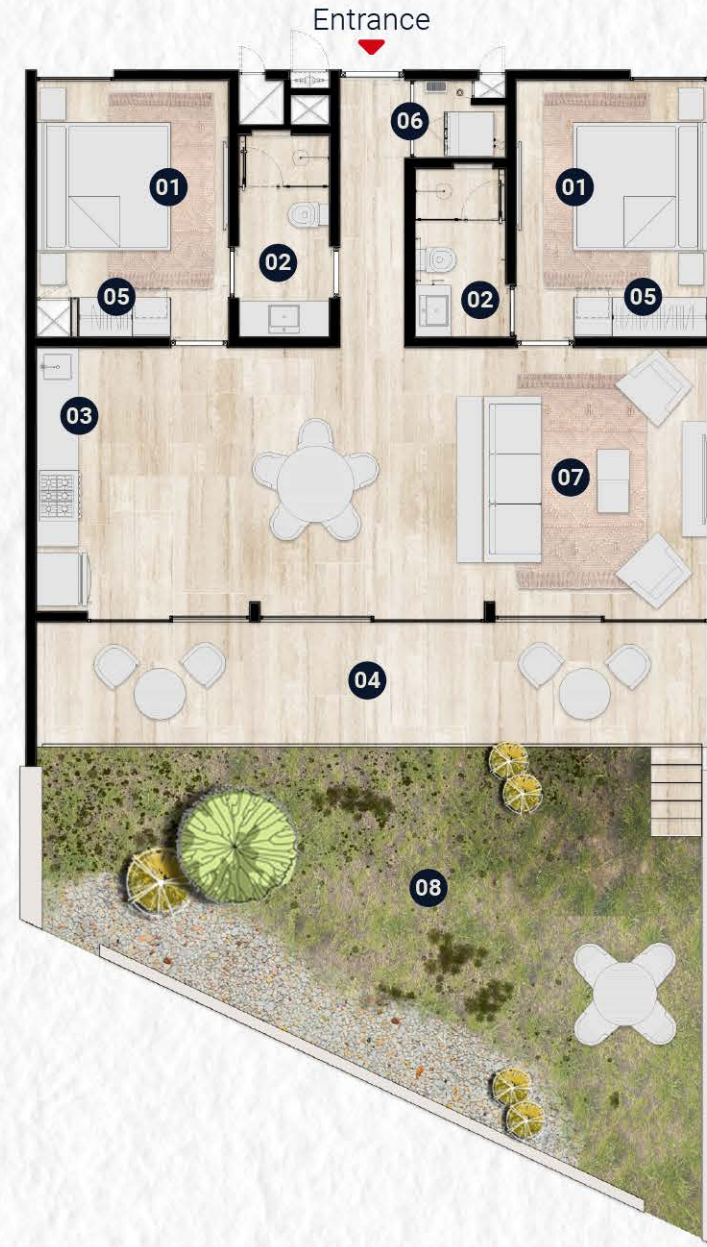
Condo: 104

 2 Bedrooms  2 Bathrooms

- 01** Bedroom **05** Closet
- 02** Bathroom **06** Laundry Area
- 03** Kitchen
- 04** Terrace
- 07** Living room
- 08** Garden

	m ²	ft ²
Interior	87 m ²	936 ft ²
Exterior	22 m ²	237 ft ²
Garden	54 m ²	581 ft ²
Total	163 m²	1,754 ft²

TYPE B PRIME



GARDEN FLOOR PLAN

Condos: 101, 102, 103, 105, 106, 107, 108, 109

 2 Bedrooms  2 Bathrooms

- 01** Bedroom **05** Closet
- 02** Bathroom **06** Laundry area
- 03** Kitchen **07** Living room
- 04** Terrace **08** Garden

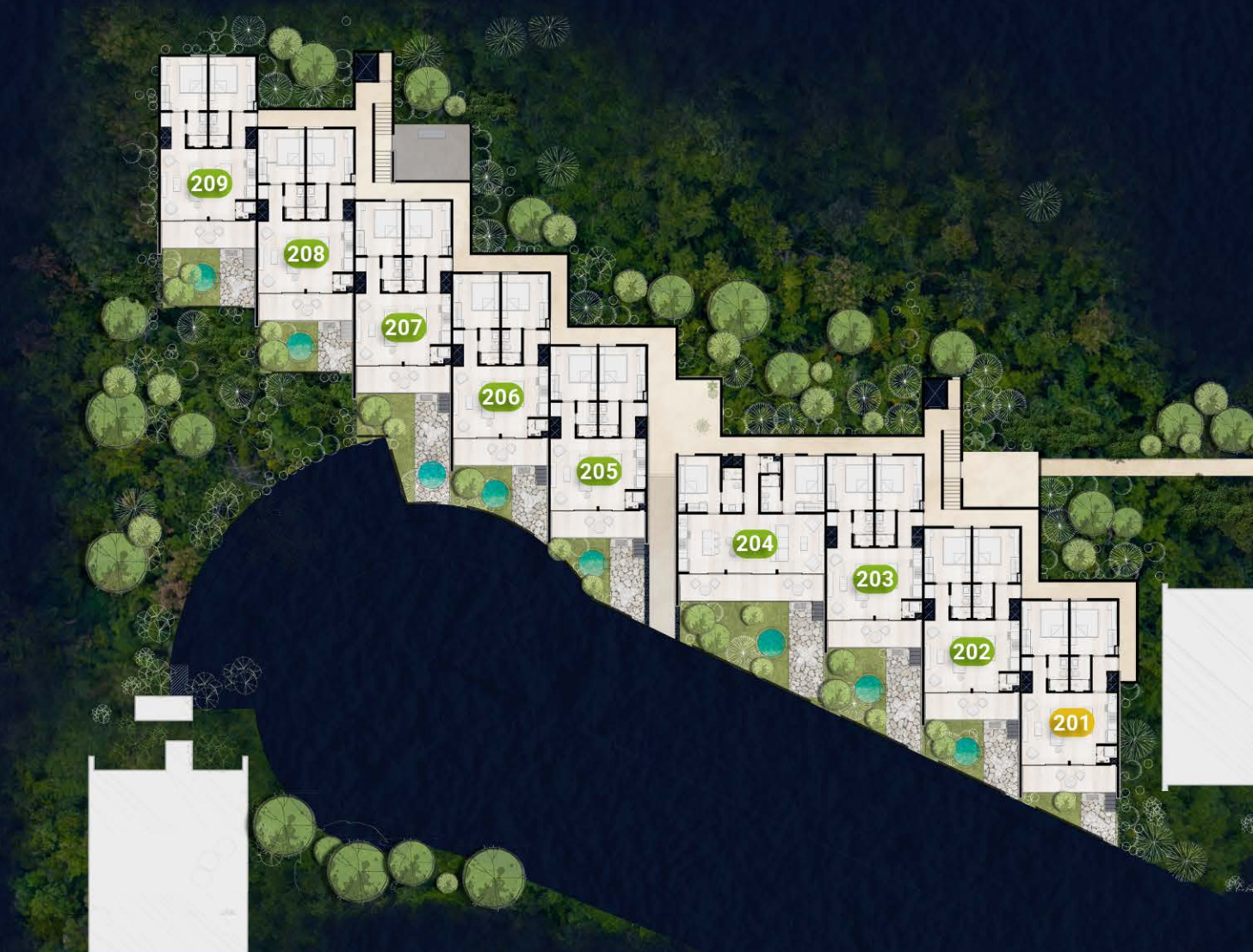
	m ²
Interior	79 m ²
Exterior	14 m ²
Garden	from 13 m ² to 27 m ²
Total	from 106 m² to 119 m²

	ft ²
Interior	855 ft ²
Exterior	147 ft ²
Garden	from 140 ft ² to 290 ft ²
Total	from 1,141 ft² to 1,280 ft²

TYPE C PRIME



MEZZANINE MASTER PLAN PRIME



● GARDEN VIEW ● PARTIAL OCEAN VIEW

MEZZANINE FLOOR PLAN

Condo: 204

 2 Bedrooms  2 Bathrooms

01 Bedroom **05** Closet

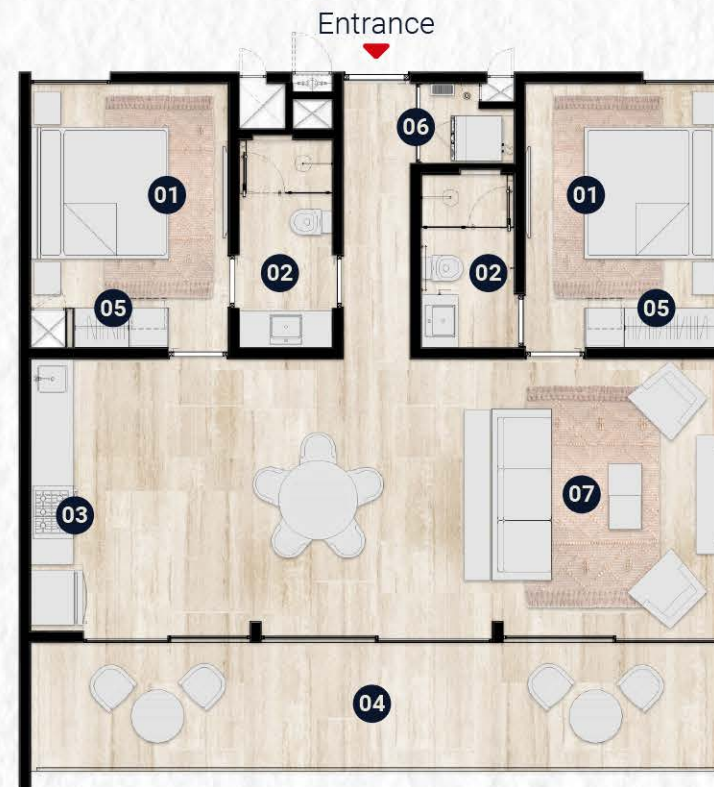
02 Bathroom **06** Laundry area

03 Kitchen **07** Living room

04 Terrace

	m ²	ft ²
Interior	87 m ²	936 ft ²
Exterior	21 m ²	226 ft ²
Total	109 m ²	1,173 ft ²

TYPE B PRIME



MEZZANINE FLOOR PLAN

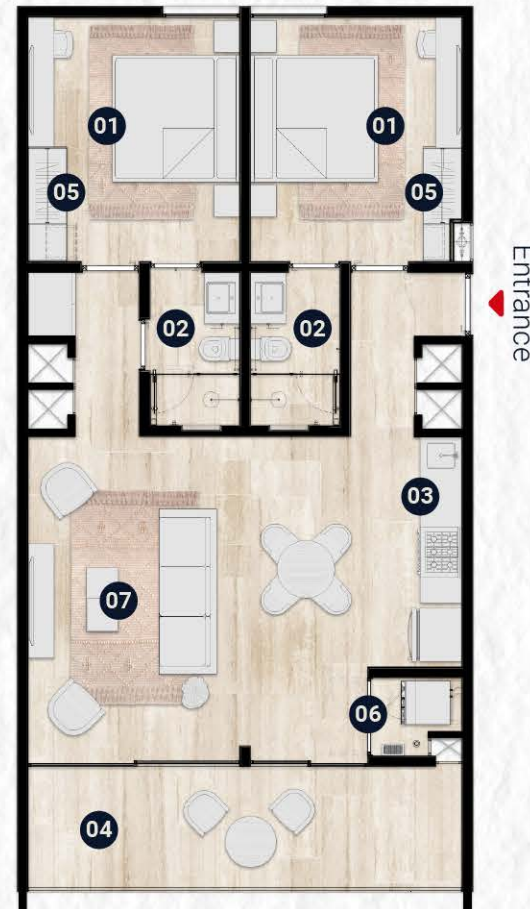
Condos: 201, 202, 203,
205, 206, 207, 208, 209

 2 Bedrooms  2 Bathrooms

- 01** Bedroom **05** Closet
- 02** Bathroom **06** Laundry area
- 03** Kitchen **07** Living room
- 04** Terrace

	m ²	ft ²
Interior	78 m ²	839 ft ²
Exterior	14 m ²	150 ft ²
Total	92 m ²	990 ft ²

TYPE C PRIME



PENTHOUSE MASTER PLAN PRIME



○ OCEAN VIEW

PENTHOUSE ROOFTOP TERRACES MASTER PLAN PRIME



○ OCEAN VIEW

PENTHOUSE FLOOR PLAN

Condos: 301, 306

 3 Bedrooms  3 Bathrooms

- 01** Bedroom
- 02** Bathroom
- 03** Kitchen
- 04** Kitchen island
- 05** Terrace
- 06** Closet
- 07** Laundry area
- 08** Living room
- 09** Pool
- 10** Aluminium pergola
- 11** Concrete bench with mat
- 12** BBQ grill
- 13** Concrete bar with sink and louvers

	m ²		ft ²
Interior	156 m ²	Interior	1,679 ft ²
Exterior	28 m ²	Exterior	301 ft ²
Rooftop	124 m ²	Rooftop	1,334 ft ²
Total	309 m²	Total	3,326 ft²

TYPE A PRIME



PENTHOUSE FLOOR PLAN

Condo: 303

 2 Bedrooms  2 Bathrooms

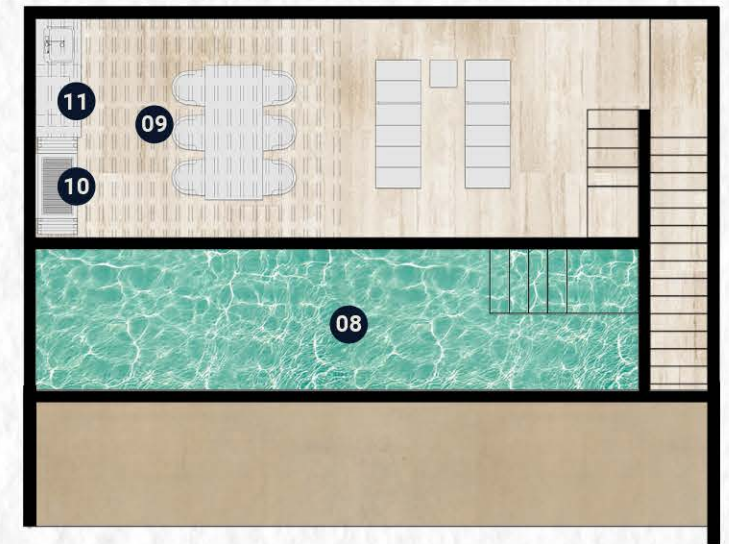
- 01** Bedroom
- 02** Bathroom
- 03** Kitchen
- 04** Terrace
- 05** Closet
- 06** Laundry area
- 07** Living room
- 08** *Pool
- 09** *Aluminium pergola
- 10** *BBQ grill
- 11** *Concrete bar with sink and louvers

	m ²	ft ²
Interior	82 m ²	882 ft ²
Exterior	22 m ²	236 m ²
Rooftop	61 m ²	656 ft ²
Total	165 m²	1,776 ft²

TYPE B PRIME



Rooftop terrace



*Pool, concrete bar, BBQ grill and pergola are an upgrade.

PENTHOUSE FLOOR PLAN

Condos: 302, 305

 2 Bedrooms  2 Bathrooms

- 01** Bedroom **08** *Pool
- 02** Bathroom **09** *Aluminium pergola
- 03** Kitchen
- 04** Terrace
- 05** Closet
- 06** Laundry area
- 07** Living room
- 10** *Concrete bench with mat
- 11** *BBQ grill
- 12** *Concrete bar with sink and louvers

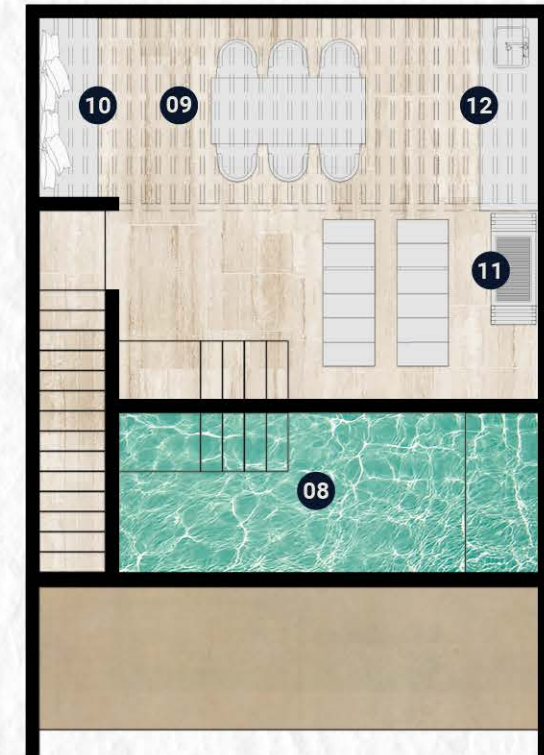
	m ²	ft ²
Interior	77 m ²	829 ft ²
Exterior	14 m ²	151 m ²
Rooftop	53 m ²	560 ft ²
Total	144 m²	1,550 ft²

TYPE C PRIME



Entrance

Rooftop terrace



*Pool, concrete bar, concrete bench with mat, BBQ grill and pergola are an upgrade.

SANTAMAR CONDOS

LAST CONDOS AVAILABLE





The background of the image is a light-colored, textured paper. On the left and right sides, there are faint, light gray architectural floor plans. The plans show various rooms, corridors, and structural elements. In the bottom left corner, there is a circular feature, possibly a well or a small pool, with a stone-like pattern around it. The overall aesthetic is clean and professional, typical of an architectural or engineering document.

MASTER PLANS
& FLOOR PLANS

MEZZANINE



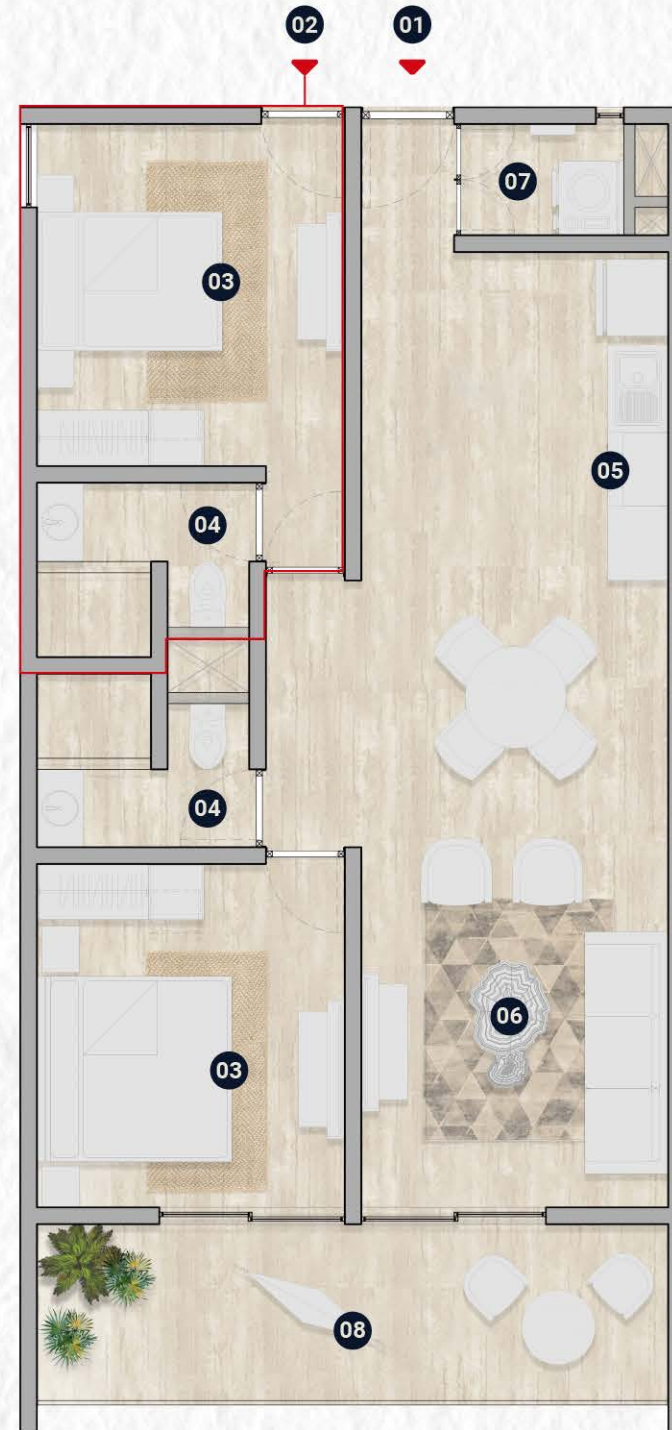
MEZZANINE CONDO

Condo: B 202

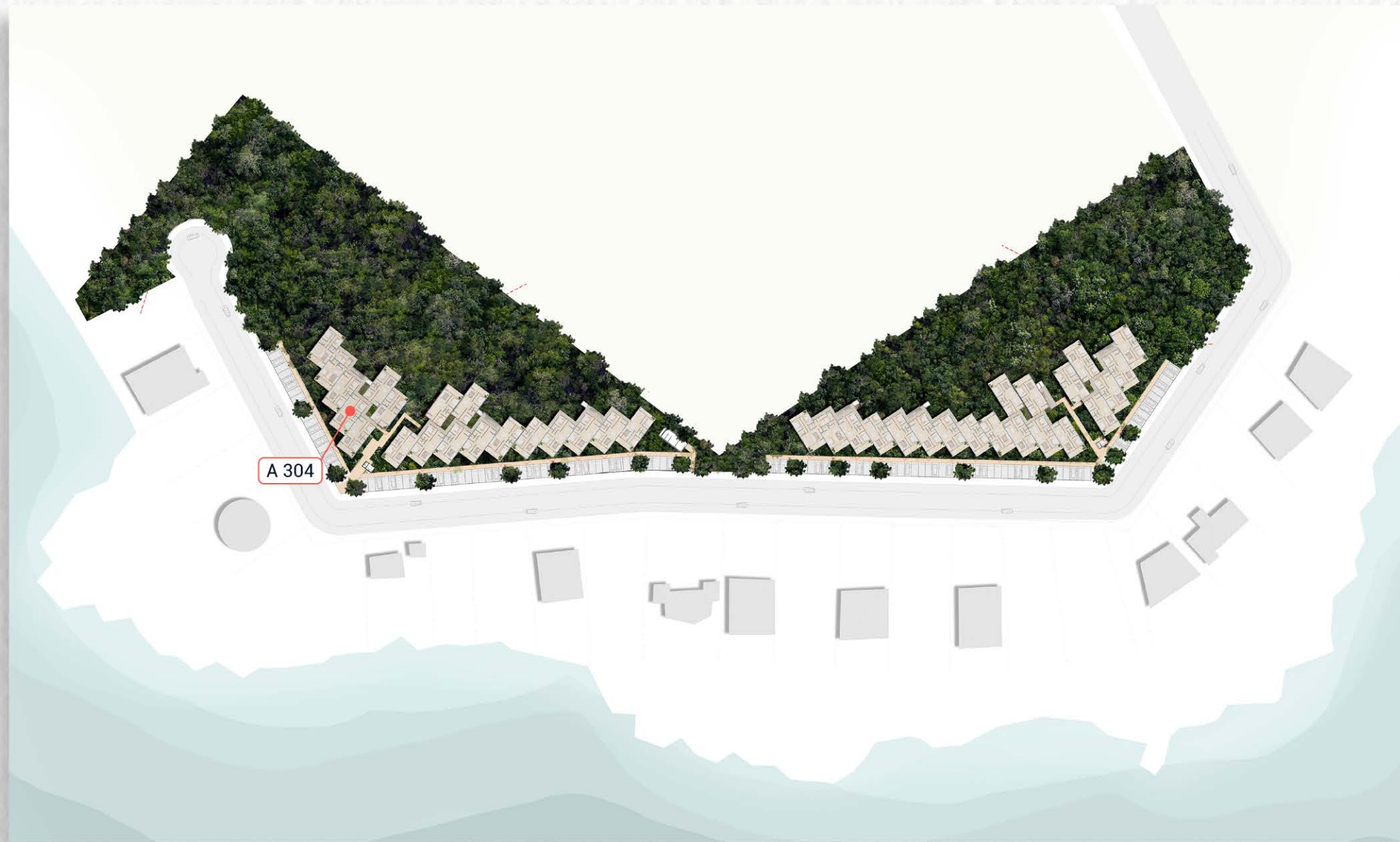
 2 Bedrooms  2 Bathrooms

- 01** Main Entrance
- 02** Lock off Entrance
- 03** Bedroom
- 04** Bathroom
- 05** Kitchen
- 06** Living room
- 07** Laundry Area
- 08** Terrace

	m ²	ft ²
Interior	80 m ²	858 ft ²
Terrace	14 m ²	148 ft ²
Total	93 m²	1,006 ft²



PENTHOUSE



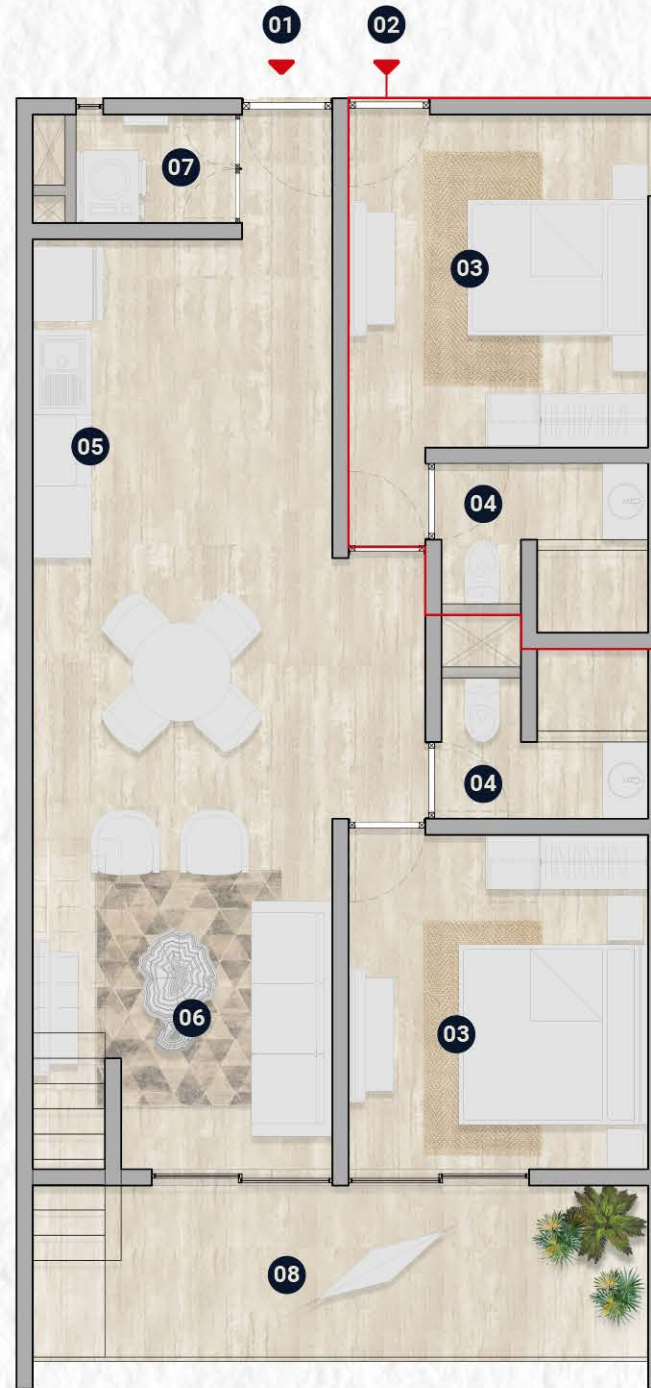
PENTHOUSE LOCK OFF CONDO

Condo: A 304

 2 Bedrooms  2 Bathrooms

- 01** Main Entrance
- 02** Lock off Entrance
- 03** Bedroom
- 04** Bathroom
- 05** Kitchen
- 06** Living Room
- 07** Laundry Area
- 08** Terrace
- 09** Private Rooftop

	m ²	ft ²
Interior	79 m ²	850 ft ²
Terrace	14 m ²	148 ft ²
Rooftop	39 m ²	401 ft ²
Total	132 m²	1,420 ft²



ADDITIONAL
AMENITIES

TAO WELLNESS CENTER



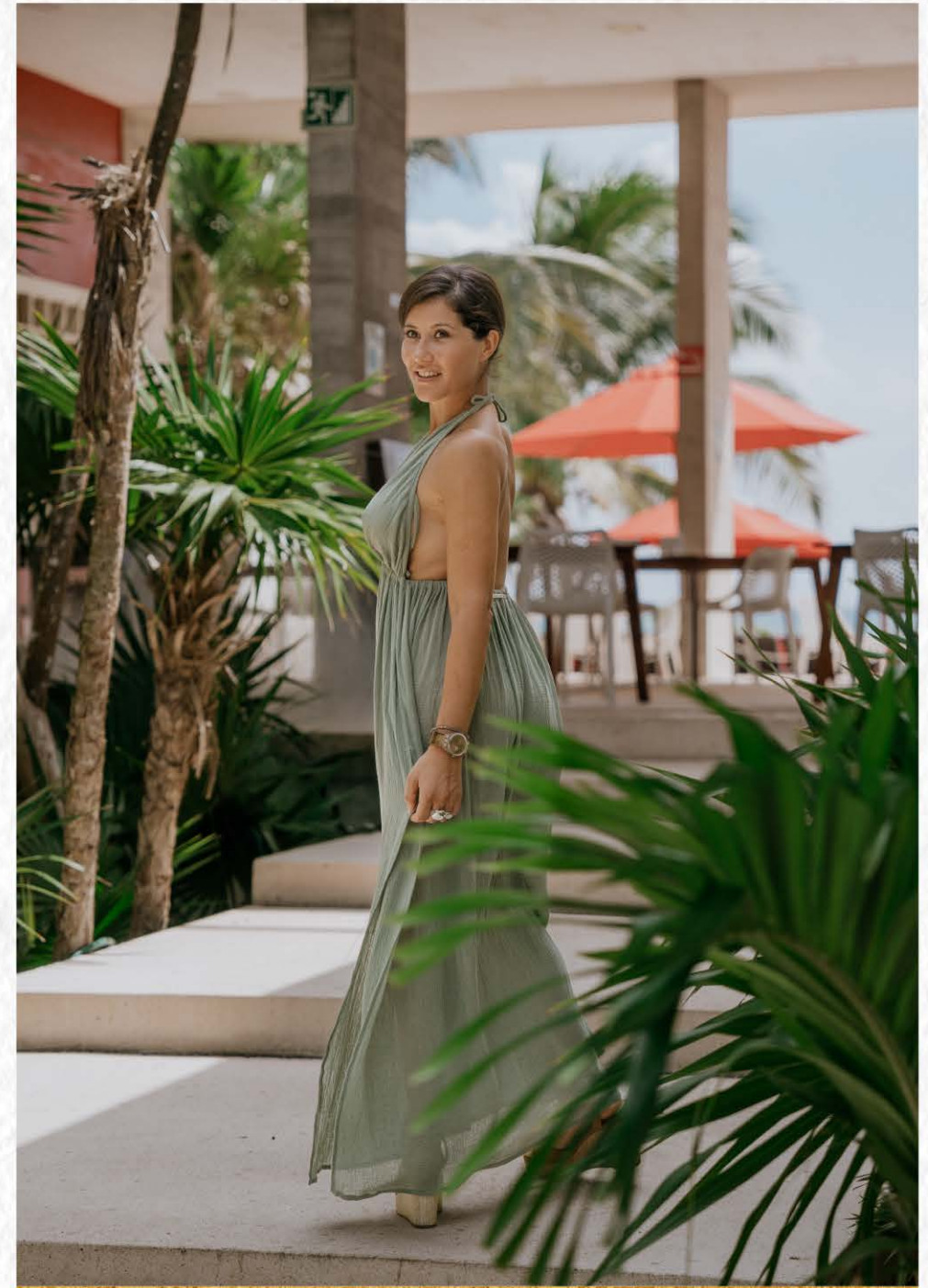
Our TAO Wellness Center was born from a genuine passion for medicine and ancestral wisdom, alternative healing, expansion of consciousness, holism, personal development, spiritual growth and service to others.

A place where we offer a variety of services and wellness and physical health activities. All within an environment that allows us to be connected with nature and enter a state of tranquility and harmony that is unmatched.

JUNGLE FISH BEACH CLUB

We know how important it is for you to have access to the beach, and that is why we built our Jungle Fish Beach Club, which has a delicious seafood restaurant, a pool with ocean views, a lounge area, and restrooms.

You can use the facilities at no cost, and in addition, our TAO owners have preferential discounts in the restaurant.



Our TAO Wellness Center and Jungle Fish Beach Club are located a couple of kilometers away from Santamar. Additionally, Santamar has its own Beach Club.

santamar

santamar

PRIME

*Renders on this presentation are subject to minor changes without prior notice.