

*RESIDENTIAL PROJECT*

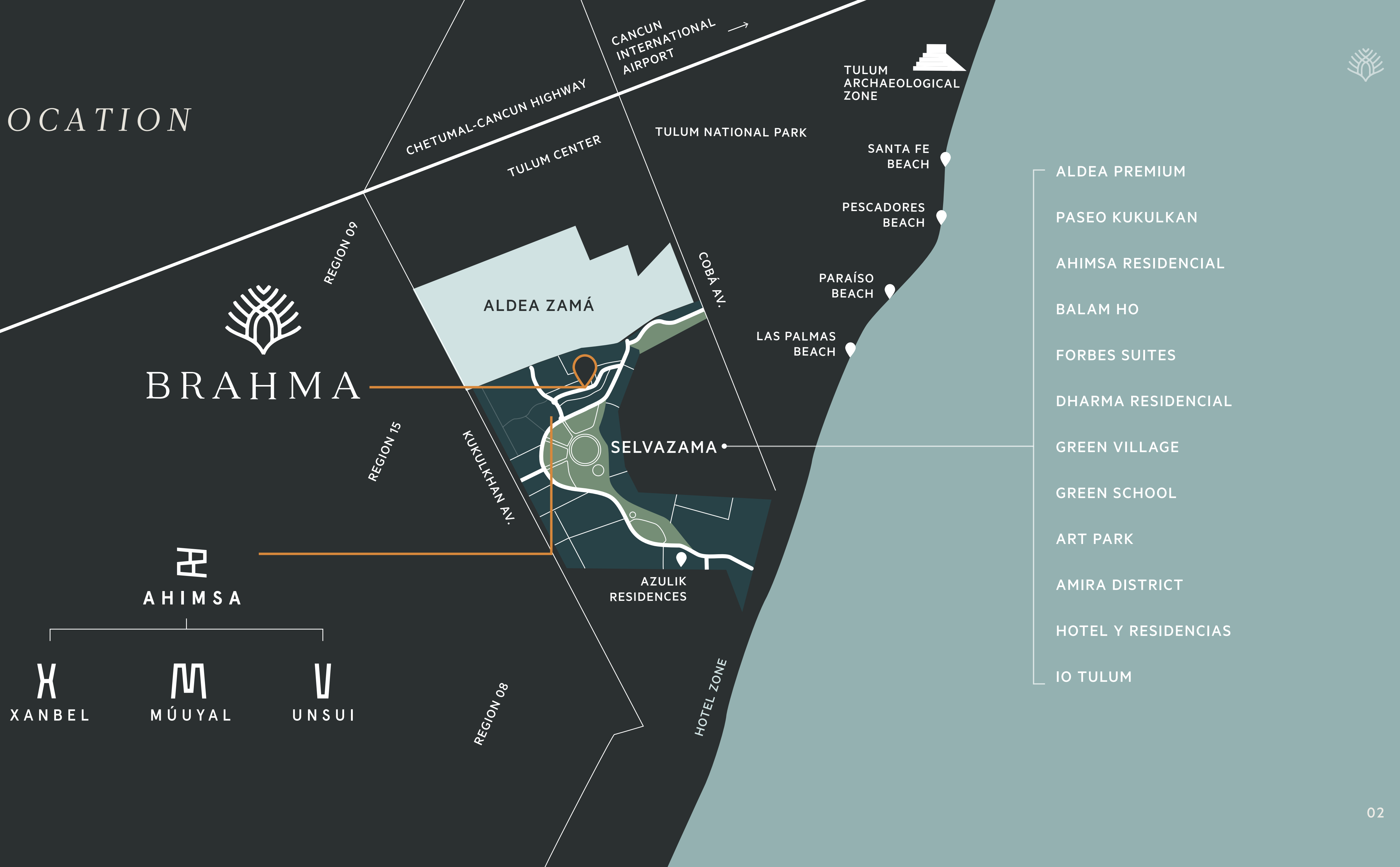


BRAHMA

TULUM, QUINTANA ROO, MEXICO



# LOCATION







TUL MEX

# BRAHMA

TULUM

## RESIDENTIAL

---

### BRAHMA ...THE CONCEPT OF CREATION AND DIVINITY.

A new project is born. 56 Luxury equipped apartments with amazing amenities located in the most exclusive and prestigious area of Tulum, Selvazama. Selvazama is a fresh, new and modern neighborhood with the beautiful beaches of Tulum just a short stroll or bike ride away. The area is complete with everything you need in the modern world, whilst still feeling at one with the lush nature that surrounds you. Our main objective is to make your transition to life in Tulum as easy as possible. All of our developments have high speed internet, essential mains, water, electricity (solar & mains), lit paved roads and walkways, 24 hr security, basement private parking and so much more (full amenities list below).

Tulum has become one of the best places to invest, with low risk and guaranteed capital gains. But not only for its rate of growth and the intangible value of its beauty, but also because of the unique quality of life it offers.

Our ethos was to design and create a relaxed lifestyle that reflects peace, harmony and tranquility between body, mind and nature, with a healthy dose of luxury, opulence and simple elegance thrown into the mix.

We are sure you will love it as much as we do.





  
**BRAHMA**  
BY PAKISTAN

VIRTUAL TOUR





  
BRAHMA  
BY PARK'VE

FRONT FACADE





FRONT FACADE













REAR FACADE







# AMENITIES

## BASEMENT



MOTO PARKING

STORAGE

PARKING LOTS

RINSE AREA

## OTHERS



ELEVATORS

SOLAR PANELS  
FOR COMMUNAL AREAS

ELECTRIC CAR  
CHARGERS

WIFI IN COMMON AREAS

## GROUND FLOOR



MOTOR LOBBY

CAFETERIA

POOL BAR & BATHROOM

BIKE PARKING

GYM & WELLNESS  
WITH BATHROOMS

POOL

LOBBY LOUNGE

INDOOR & OUTDOOR YOGA

POOL LOUNGE  
& POOL BEDS

SURVEILLANCE

GREEN AREAS

## ROOF GARDEN



POOL

SUNSET YOGA

ROOF TOP BAR

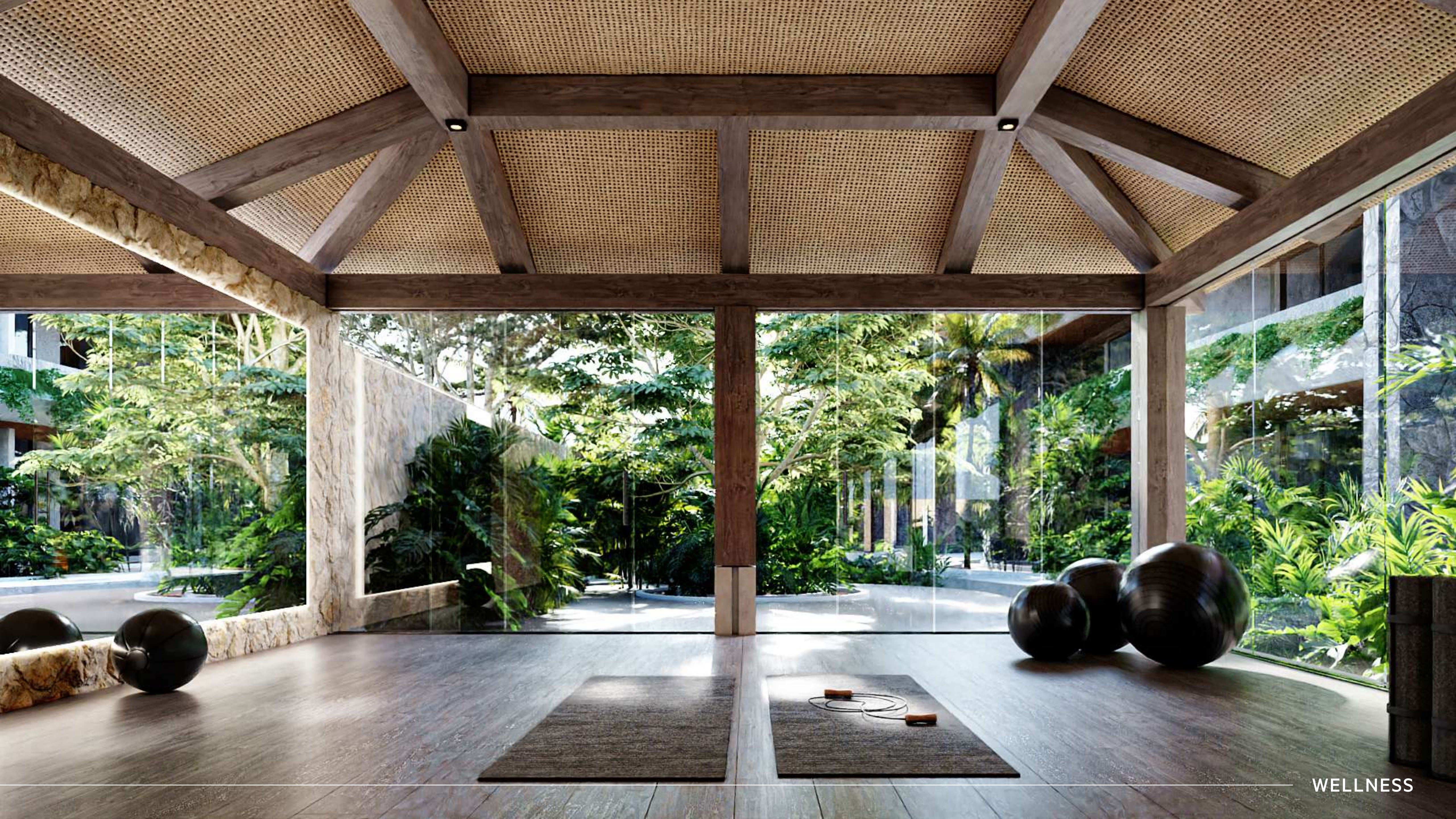
LOUNGE AREA

SPA WITH MASSAGE  
& SAUNA

BATHROOMS

SUNDECK





WELLNESS









SPA



SAUNA

















LIVING ROOM





DINING ROOM





MAIN BATHROOM





MAIN BEDROOM





PRIVATE ROOF





PRIVATE ROOF



BASEMENT





GROUND  
FLOOR

- PROT. 1
- PROT. 2





LEVEL 1

- PROT. 1
- PROT. 2





LEVEL 2

- PROT. 1
- PROT. 2
- PROT. 3
- PROT. 4





ROOF  
GARDEN

PROT. 4







# PROTOTYPE 01

## ONE BEDROOM

001, 004, 005, 008, 012, 013, 016,  
017, 020, 101, 104, 105, 108, 109, 112,  
113, 116, 117, 120, 205, 208, 209, 212

## LIVING SPACE

- Kitchen / Dinning room
- Main living room
- Master bedroom
- Laundry room
- Full bath

## AMENITIES

- Terrace
- Outdoor dining area

Construction  
63.93 m<sup>2</sup> (variable)

Terrace surface  
19.82 m<sup>2</sup> (variable)







# PROTOTYPE 02

## TWO BEDROOMS

002, 003, 006, 007, 010, 011, 014, 015,  
018, 019, 102, 103, 106, 107, 110, 111,  
114, 115, 118, 119, 206, 207, 210, 211

## LIVING SPACE

Kitchen / Dinning room  
Main living room  
Master bedroom  
Second bedroom

## AMENITIES

Terrace  
Outdoor dinning area  
Laundry room  
Bathroom 01  
Bathroom 02

Construction  
92.00 m<sup>2</sup> (variable)

Terrace surface  
37.37 m<sup>2</sup> (variable)







# PROTOTYPE 03

## ONE BEDROOM

202, 214, 218

## LIVING SPACE

Kitchen / Dining room

Flex room

Master bedroom

Full bathroom including laundry area

## AMENITIES

Terrace

Outdoor dinning area

Construction

56.84 m<sup>2</sup>

Terrace surface

18.53 m<sup>2</sup> (variable)







# PROTOTYPE 04-A

## THREE BEDROOMS

201, 203, 213, 215, 217, 219

## LIVING SPACE

Kitchen / Dining room

Main room

Master bedroom

Full bath

Second bedroom

Bathroom 01

Laundry room

## AMENITIES

Terrace

Outdoor dinning area

Construction

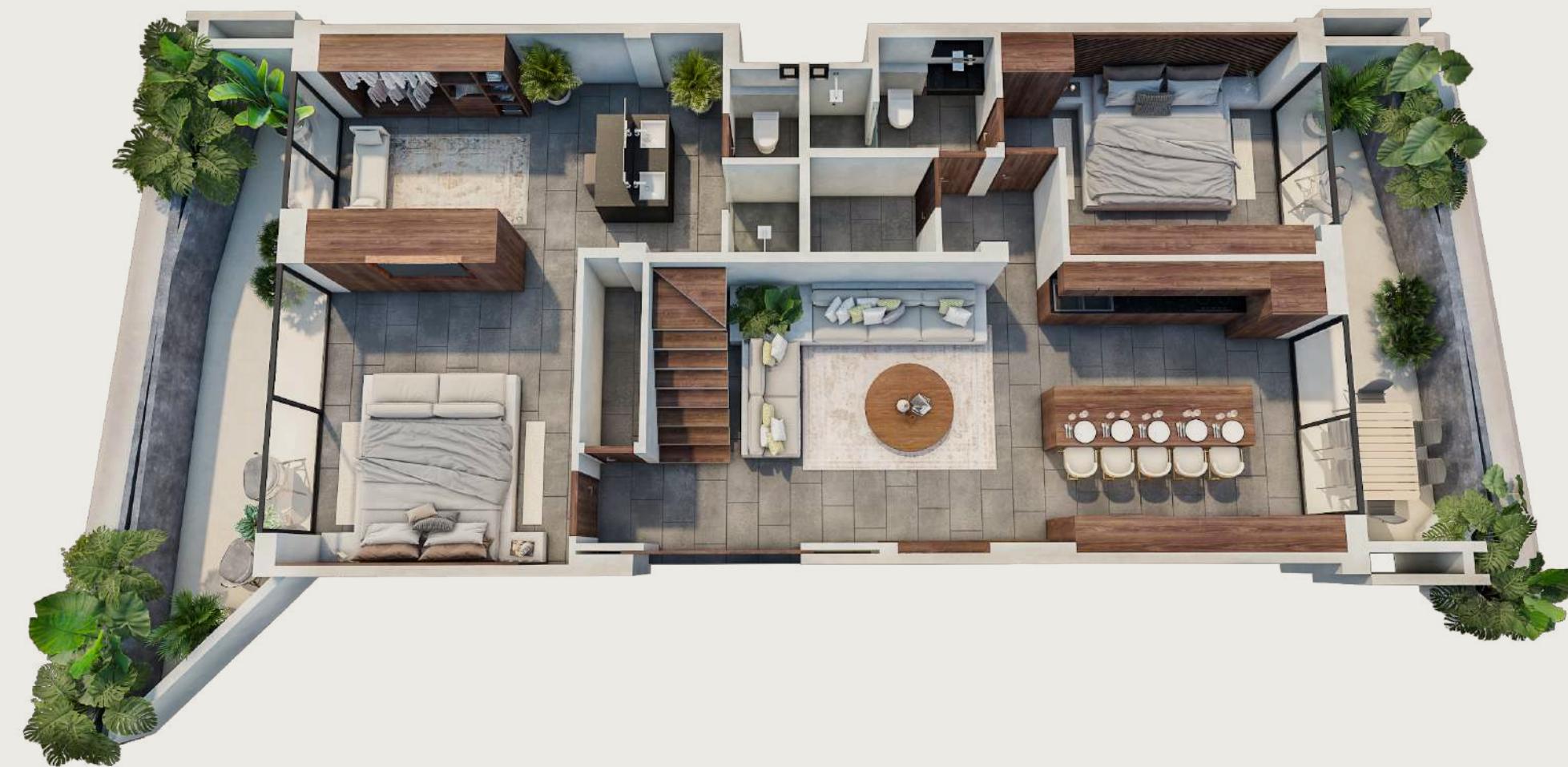
127.33 m<sup>2</sup> (variable) on first floor

64.36 m<sup>2</sup> (variable) on lock off floor

Terrace and Roof Garden surface

163.53 m<sup>2</sup> (variable)

BRAHMA







# PROTOTYPE 04-B

## FOUR BEDROOMS

201, 203, 213, 215, 217, 219

## LIVING SPACE

Kitchen / Dining room

Main living room

Master bedroom

Bathroom 01

Bedroom 02

Bathroom 02

Bedroom 03

Laundry room

## AMENITIES

Terrace

Outdoor dining area

Construction

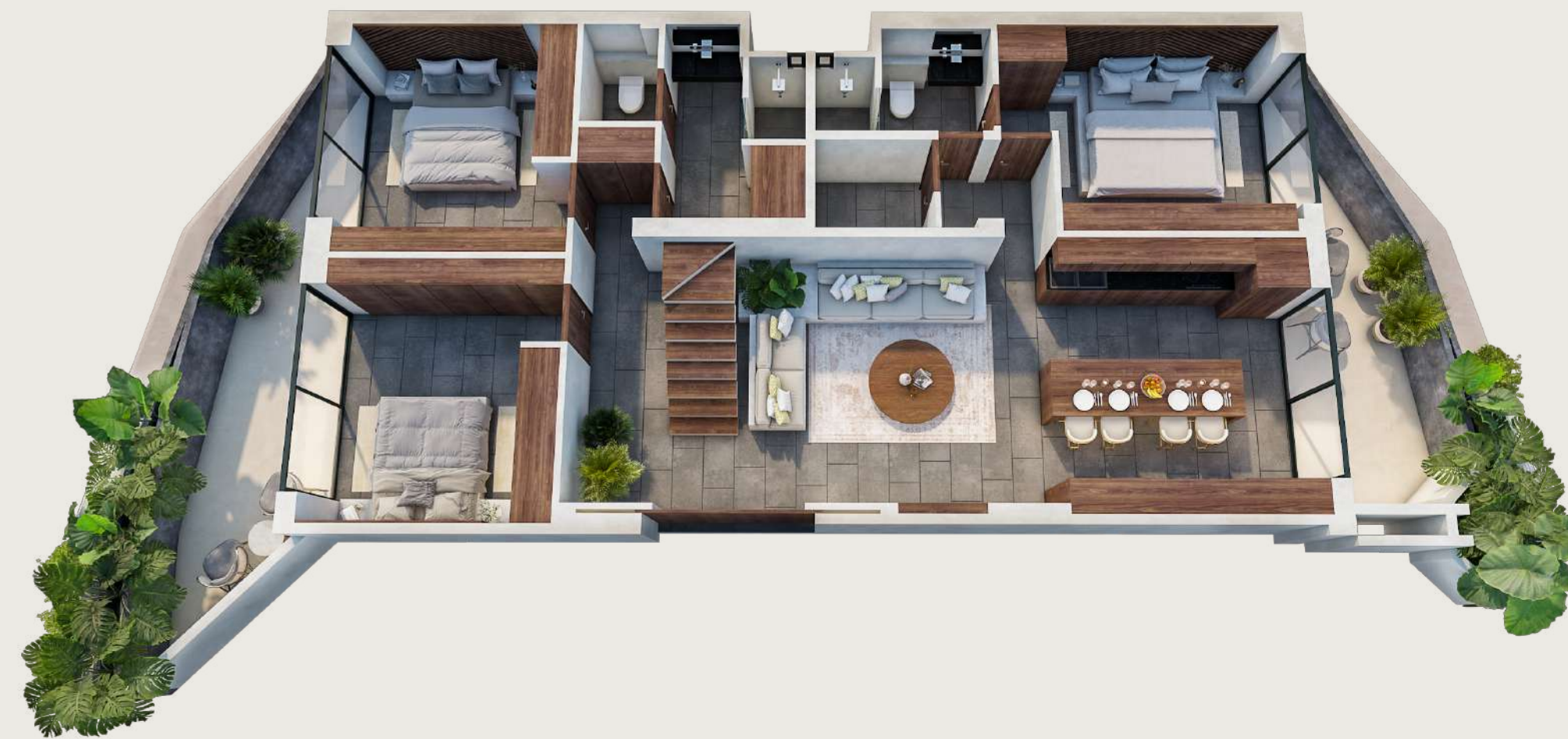
127.33 m<sup>2</sup> (variable) on first floor

64.36 m<sup>2</sup> (variable) on lock off floor

Terrace and Roof Garden surface

163.53 m<sup>2</sup> (variable)

BRAHMA







# PROTOTYPE 04 LOCK OFF

201, 203, 213, 215, 217, 219

## LIVING SPACE

Kitchen / Dining room

Master bedroom

Bathroom 02

Laundry area

Construction

64.63 m<sup>2</sup> (variable)

Terrace and Roof Garden surface

125.35 m<sup>2</sup> (variable)







PAK'TE

## DEVELOPER

---

### PAK'TE

The word Pak'te means together. We at Pak'te aim to unite our concepts, local resources and customs, integrating the comfortable and practical with nature, working hand in hand with the locals and with low impact proposals. Always preserving the stunning surrounding nature in everything we do. Pakte considers the local community by working and creating its own community in our projects.

### ABOUT US

Pak'te is the partnership of two successful Spanish businessmen who reside in Ibiza and that after more than 25 years of experience in real estate development, came together to create different projects, using their knowledge and wisdom at the forefront of new Architectural concepts. Their projects break barriers to integrate natural elements, respecting the environment in everything they do, whilst never compromising on quality.

### WORK EXPERIENCE

Pakte is led by two successful businessmen with more than 25 years of experience in construction, hotel division, and real estate development, being owners of important global companies. Their projects are located in different cities around the world such as Valencia, Ibiza, Barcelona and Tulum.

### PURPOSE

Its purpose is innovation and creativity in all their projects, in which subtlety in beauty and comfort integrate perfectly with the natural elements and the style area. The union between simplicity and elegance is one of their main objectives to create a concept of life in nature.

TULUM | IBIZA |  
VALENCIA | BARCELONA



*RESIDENTIAL PROJECT*



BRAHMA

TULUM, QUINTANA ROO, MEXICO