



MARTELL

MACROLOTES

DISPONIBLES EN VENTA

AV. LUIS DONALDO COLOSIO

SANTA CATARINA, NUEVO LEÓN

MAYO 2024



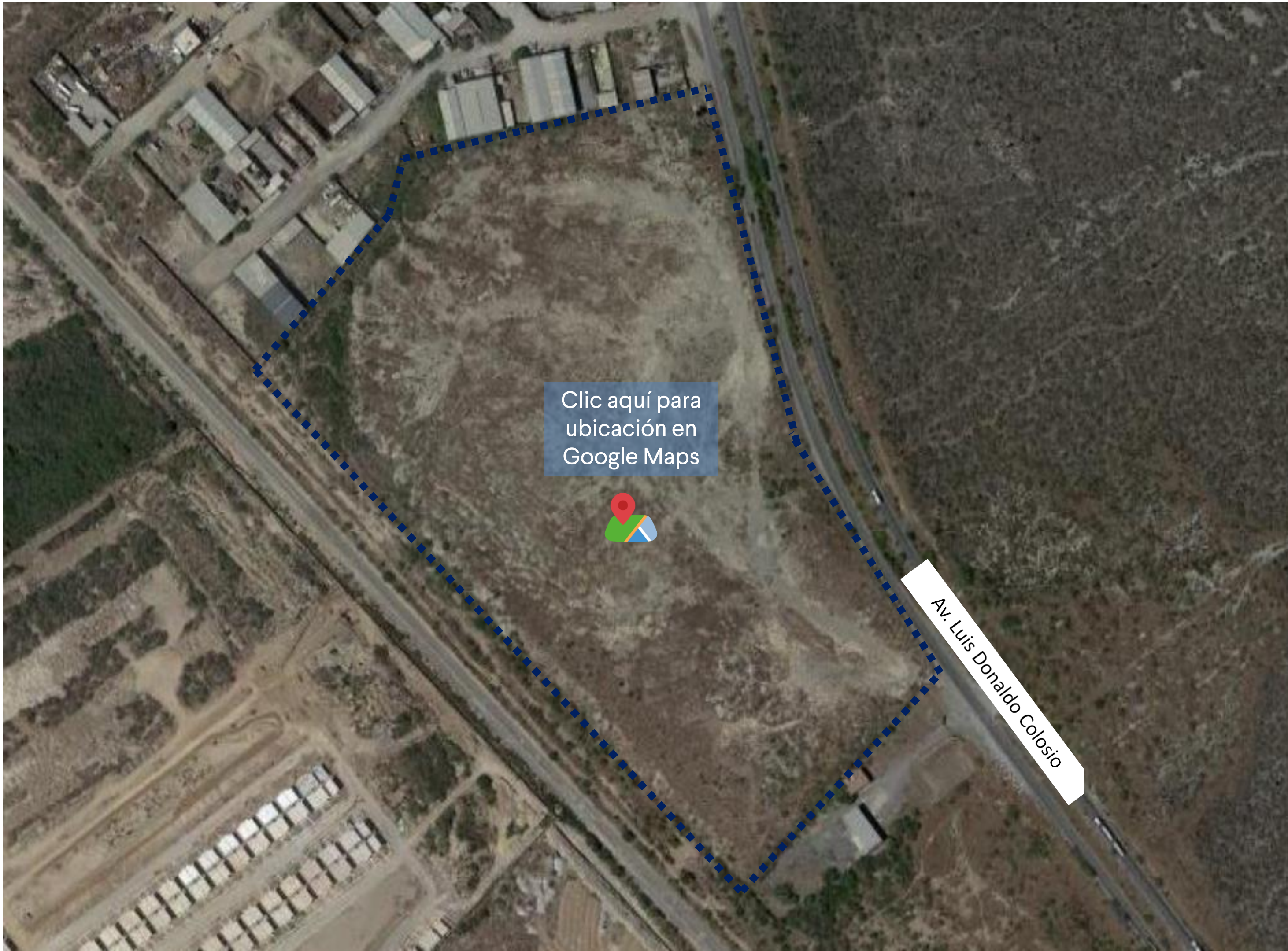
UBICACIÓN DEL PROYECTO



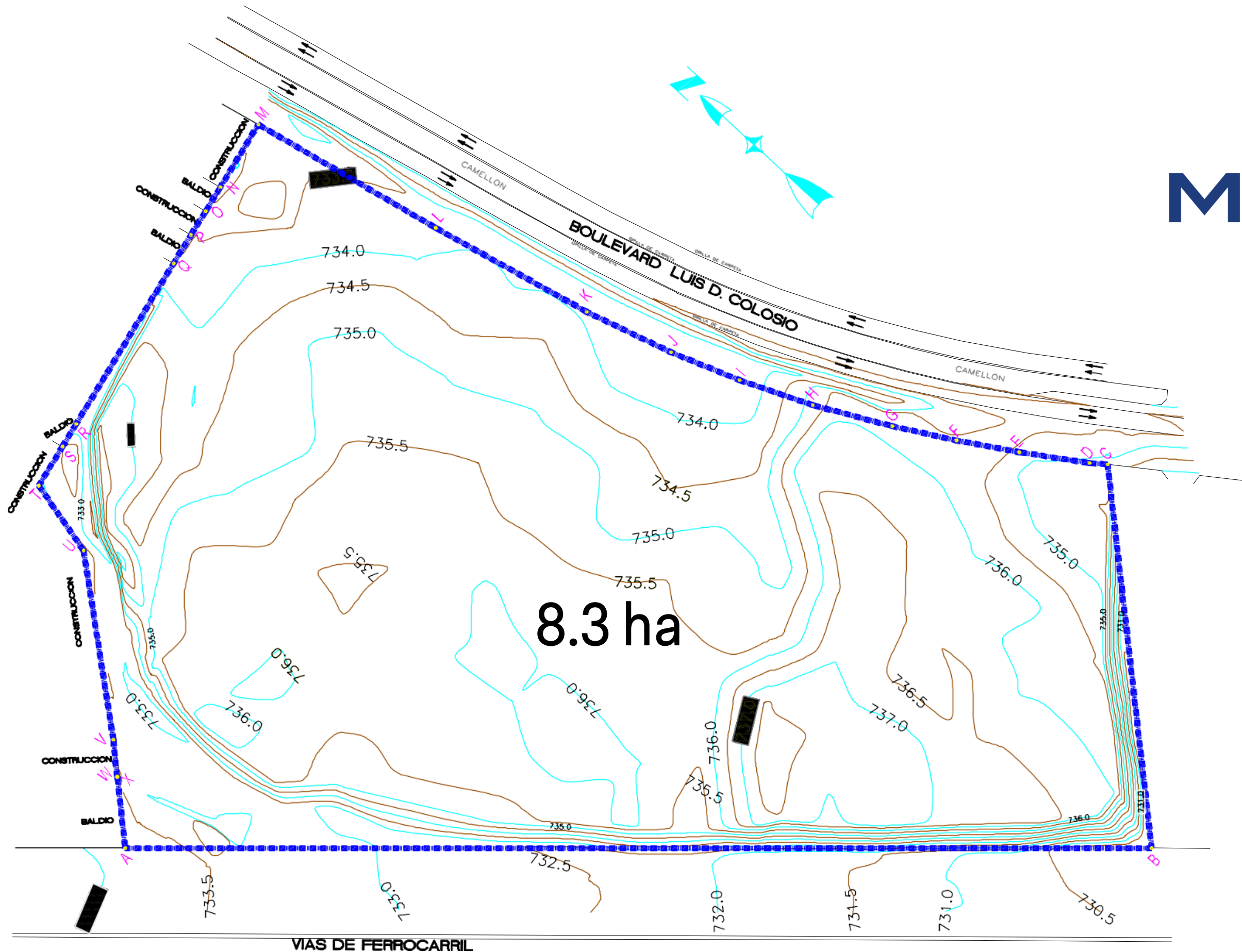
UBICACIÓN DEL PROYECTO



UBICACIÓN DEL PROYECTO



PROYECTO URBANÍSTICO



Levantamiento Topográfico

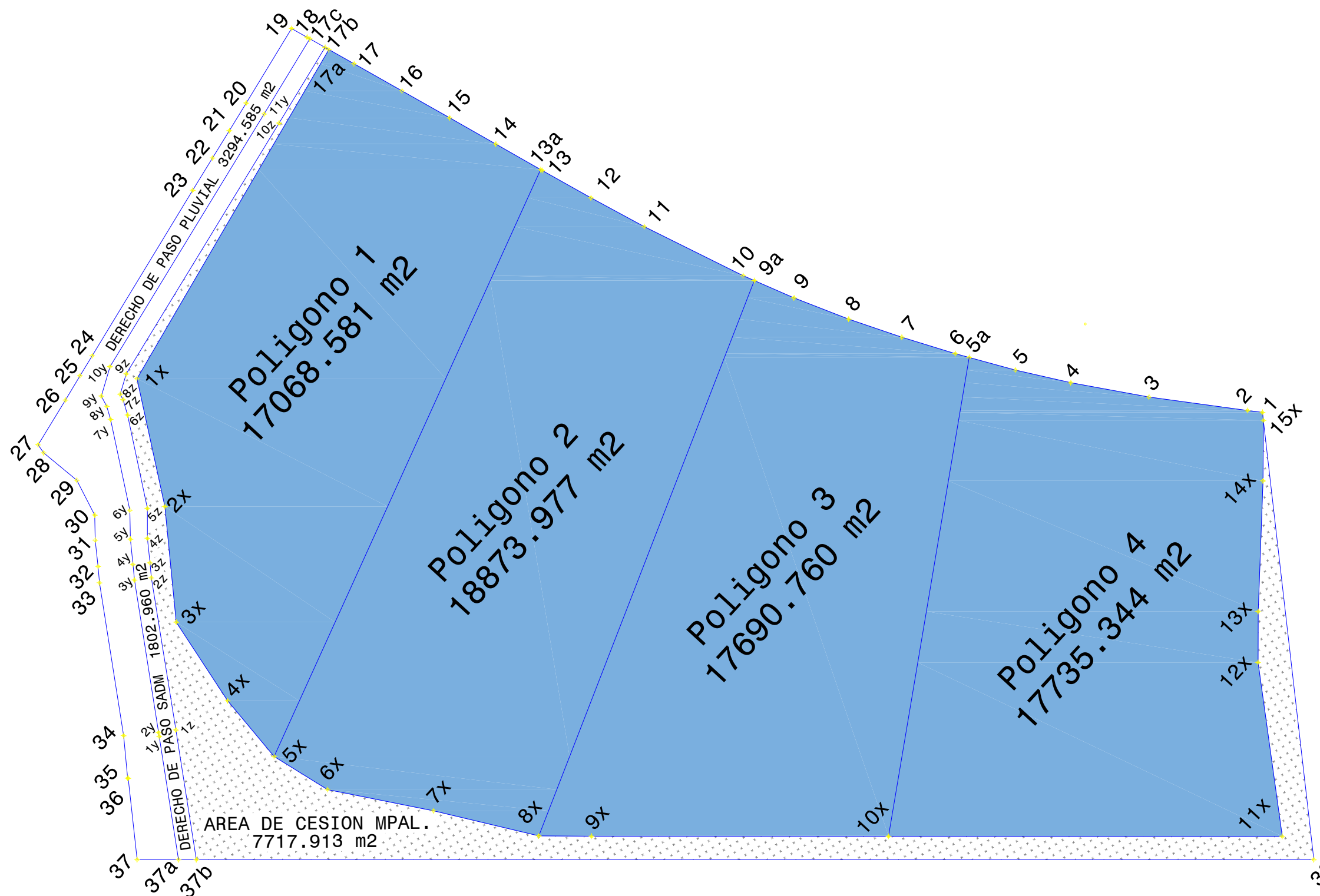
CUADRO DE CONSTRUCCION						
PUNTO	ORDEN	RUMBO	DISTANCIA	V	COORDENADAS	
					Y	X
A	B	S 42°38'24" E	402.665	A	2,846,665.3043	348,763.9616
B	C	N 40°48'14" E	151.317	C	2,846,483.6347	349,135.6044
C	D	N 38°35'37" W	7.170	D	2,846,489.2383	349,131.1321
D	E	N 33°49'22" W	27.842	E	2,846,512.3681	349,115.6348
E	F	N 32°05'25" W	25.027	F	2,846,533.5710	349,102.3392
F	G	N 30°09'29" W	25.825	G	2,846,555.9005	349,089.3650
G	H	N 27°48'37" W	32.247	H	2,846,584.4227	349,074.3205
H	I	N 23°49'18" W	30.378	I	2,846,612.2125	349,062.0511
I	J	N 20°30'39" W	29.021	J	2,846,639.3942	349,051.8824
J	K	N 17°03'55" W	36.670	K	2,846,674.4492	349,041.1213
K	L	N 13°35'00" W	67.775	L	2,846,740.3283	349,025.2039
L	M	N 12°25'04" W	80.448	M	2,846,818.8941	349,007.9045
M	N	S 78°42'04" W	28.733	N	2,846,813.2645	348,979.7281
N	O	S 78°48'01" W	11.060	O	2,846,811.1162	348,968.8785
O	P	S 78°57'12" W	10.964	P	2,846,809.0154	348,958.1175
P	Q	S 78°57'34" W	13.005	Q	2,846,806.5248	348,945.3529
Q	R	S 78°37'35" W	73.258	R	2,846,791.9991	348,873.1415
R	S	S 78°21'18" W	10.330	S	2,846,789.9140	348,863.0240
S	T	S 78°44'16" W	17.910	T	2,846,786.4161	348,845.4588
T	U	S 12°41'58" W	30.880	U	2,846,756.2919	348,838.6702
U	V	S 38°24'17" W	75.053	V	2,846,697.4775	348,792.0465
V	W	S 41°53'48" W	14.630	W	2,846,686.5877	348,782.2767
W	X	S 37°08'49" E	0.193	X	2,846,686.4340	348,782.3931
X	A	S 41°05'54" W	28.039	A	2,846,665.3043	348,763.9616

SUPERFICIE = 83,485.401 m2

DISPONIBILIDAD



MARTEL



Precio de venta:
\$2,500/m²

Disponibile
4 lotes

4 lotes totales
MAYO 2024

Precios pueden cambiar sin previo aviso.
Precios válidos durante mayo 2024.

POLIGONO 1							
LADO	EST	PV	RUMBO	DISTANCIA	V	COORDENADAS	
						X	Y
13a	14		N 12°54'15.070" W	17.644	13a	349031.2929	2846723.3913
14	15		N 12°54'19.020" W	18.13	14	349027.3528	2846740.5892
15	16		N 13°03'36.870" W	18.78	15	349023.3020	2846758.2684
16	17		N 13°07'01.400" W	18.84	16	349019.0564	2846776.5702
17	17a		N 13°07'44.330" W	9.877	17	349014.7808	2846794.9187
17a	1x		S 77°40'27.66" W	130.320	17a	349012.4952	2846804.5276
1x	2x		S 35°07'39.49" W	44.802	1x	348885.1791	2846776.7085
2x	3x		S 41°49'32.59" W	39.777	2x	348859.4002	2846740.0664
3x	4x		S 14°13'55.47" W	32.131	3x	348832.8740	2846710.4252
4x	5x		S 07°36'33.09" W	24.822	4x	348824.9745	2846679.2803
5x	13a		N 71°50'57.69" E	220.581	5x	348821.6877	2846654.6766
SUPERFICIE = 17,068.581 M ²							

POLIGONO 2							
LADO	EST	PV	RUMBO	DISTANCIA	V	COORDENADAS	
						X	Y
9a	10		N 19°00'19.760" W	4.195	9a	349052.7914	2846643.8453
10	11		N 16°10'3.490" W	37.75	10	349051.4252	2846647.8119
11	12		N 14°11'42.780" W	20.74	11	349040.9127	2846684.0725
12	13		N 13°17'23.360" W	19.11	12	349035.8252	2846704.1852
13	13a		N 12°54'15.070" W	0.616	13	349031.4307	2846722.7899
13a	5x		S 71°50'57.69" W	220.581	13a	349031.2929	2846723.3913
5x	6x		S 10°48'58.31" E	21.460	5x	348821.6877	2846654.6766
6x	7x		S 31°13'39.39" E	37.020	6x	348825.7148	2846633.5979
7x	8x		S 29°10'43.39" E	37.038	7x	348844.9075	2846601.9415
8x	9a		N 68°38'22.04" E	203.828	8x	348862.9647	2846569.6038
SUPERFICIE = 18,873.977 M ²							

POLIGONO 3							
LADO	EST	PV	RUMBO	DISTANCIA	V	COORDENADAS	
						X	Y
5a	6		N 27°17'5.710" W	4.917	5a	349083.1392	2846571.9042
6	7		N 25°29'0.560" W	19.16	6	349080.8851	2846576.2743
7	8		N 23°43'46.500" W	19.20	7	349072.6398	2846593.5736
8	9		N 21°19'44.410" W	20.06	8	349064.9115	2846611.1547
9	9a		N 19°00'19.760" W	14.805	9	349057.6142	2846629.8434
9a	8x		S 68°38'22.04" W	203.828	9a	349052.7914	2846643.8453
8x	9x		S 42°10'25.54" E	18.034	8x	348862.9647	2846569.6038
9x	10x		S 42°33'00.91" E	101.627	9x	348875.0721	2846556.2388
10x	5a		N 56°59'16.62" E	166.171	10x	348943.7959	2846481.3719
SUPERFICIE = 17,690.760 M ²							

POLIGONO 4							
LADO	EST	PV	RUMBO	DISTANCIA	V	COORDENADAS	
						X	Y
1	2		N 35°30'17.280" W	5.15	1	349137.2085	2846485.2809
2	3		N 34°48'28.030" W	34.02	2	349134.2121	2846489.4809
3	4		N 32°11'16.770" W	27.21	3	349114.7929	2846517.4134
4	5		N 29°43'0.790" W	19.46	4	349100.2939	2846540.4481
5	5a		N 27°17'5.710" W	16.363	5	349090.6440	2846557.3546
5a	10x		S 56°59'16.62" W	166.171	5a	349083.1392	2846571.9042
10x	11x		S 42°33'00.91" E	134.743	10x	348943.7959	2846481.3719
11x	12x		N 39°29'53.88" E	60.074	11x	349034.9141	2846382.1088
12x	13x		N 47°35'22.50" E	17.463	12x	349073.1244	2846428.4643
13x	14x		N 49°31'28.80" E	44.739	13x	349086.0182	2846440.2423
14x	15x		N 47°50'05.71" E	20.670	14x	349120.0508	2846469.2835
15x	1		N 40°52'37.63" E	2.807	15x	349135.3715	2846483.1585
SUPERFICIE = 17,735.344 M ²							



SERVICIOS A PIE DE LOTE EN MACROLOTES AV. LUIS DONALDO COLOSIO:

- Agua Potable (SADM)
- Drenaje Sanitario (SADM)
- Red Eléctrica Aérea (CFE)





MARTEL

CONTACTO

Ing. Mauricio De la Garza

WEBSITE

martel.com.mx & infomartel.com

TELÉFONO

+52 81 1015 3547

EMAIL

mauricio@martel.com.mx

DIRECCIÓN

Edificio VOLGA

Calzada San Pedro #112, Nivel PH

Colonia Del Valle C.P. 66220

San Pedro Garza García, N.L.