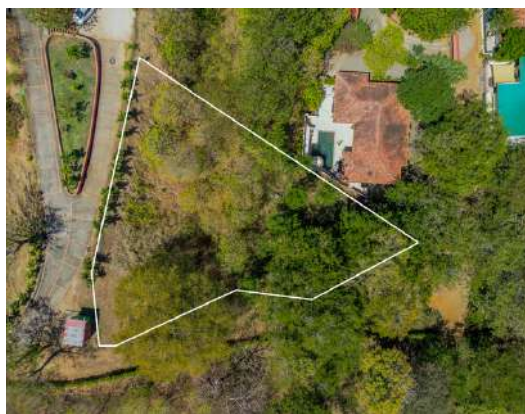


Mountain Vistas and
Partial Ocean View -
Ready to build

SIZE : 1519M2 / 0.37 ACRE

FOR SALE
\$149,900

ISABELLA LOT 9



Utilities are already in place so you can start building your dream home!

Discover the perfect blend of convenience and natural beauty in La Isabella, Playas del Coco. This community takes pride in its lush vegetation and is one of the closest residential areas to downtown Coco and the beach, just under a 5-minute drive or a 10-minute walk to the Pacifico retail village with an Auto Mercado supermarket, pharmacy, various restaurants, and shops. Here, a car is virtually unnecessary, as the area is easily accessible by a golf cart—a common mode of transportation, and only 40 min to Liberia International Airport, making Playas del Coco the closest beachtown to the airport.

This medium-sized community features a total of 49 sites, with 75% already developed, showcasing beautiful homes surrounded by lush vegetation and offering reasonable HOA fees (\$182/month).



First Floor View



Second Floor View

Isabella community provides underground utilities and fiber optic internet cable. Isabella 9, with 1519m² / 0.37 acres and 104 feet of frontage, features a sloping terrain, perfect for building two floors and capturing a partial ocean view from the second floor and even a better view from a roof terrace, along with 180-degree serene mountain views.

We can connect you to experienced builders and guide you through every step in building. Construction costs average in the area \$100 - \$125 a sq.ft

Enjoy the opportunity of being close to the center and be part of this vibrant community with reasonable HOA fees. Contact us for viewing or more information!

