

The background consists of several overlapping geometric shapes in shades of green and orange. A large, dark green shape is on the left, with a diagonal orange shape overlapping it. The top right is a solid orange rectangle. The bottom right is a light green shape. The bottom left features a white area with several sharp, pointed shapes in orange and green.

COSTA CARIBE

CONDOS EN TULÚM

Condos in Tulum

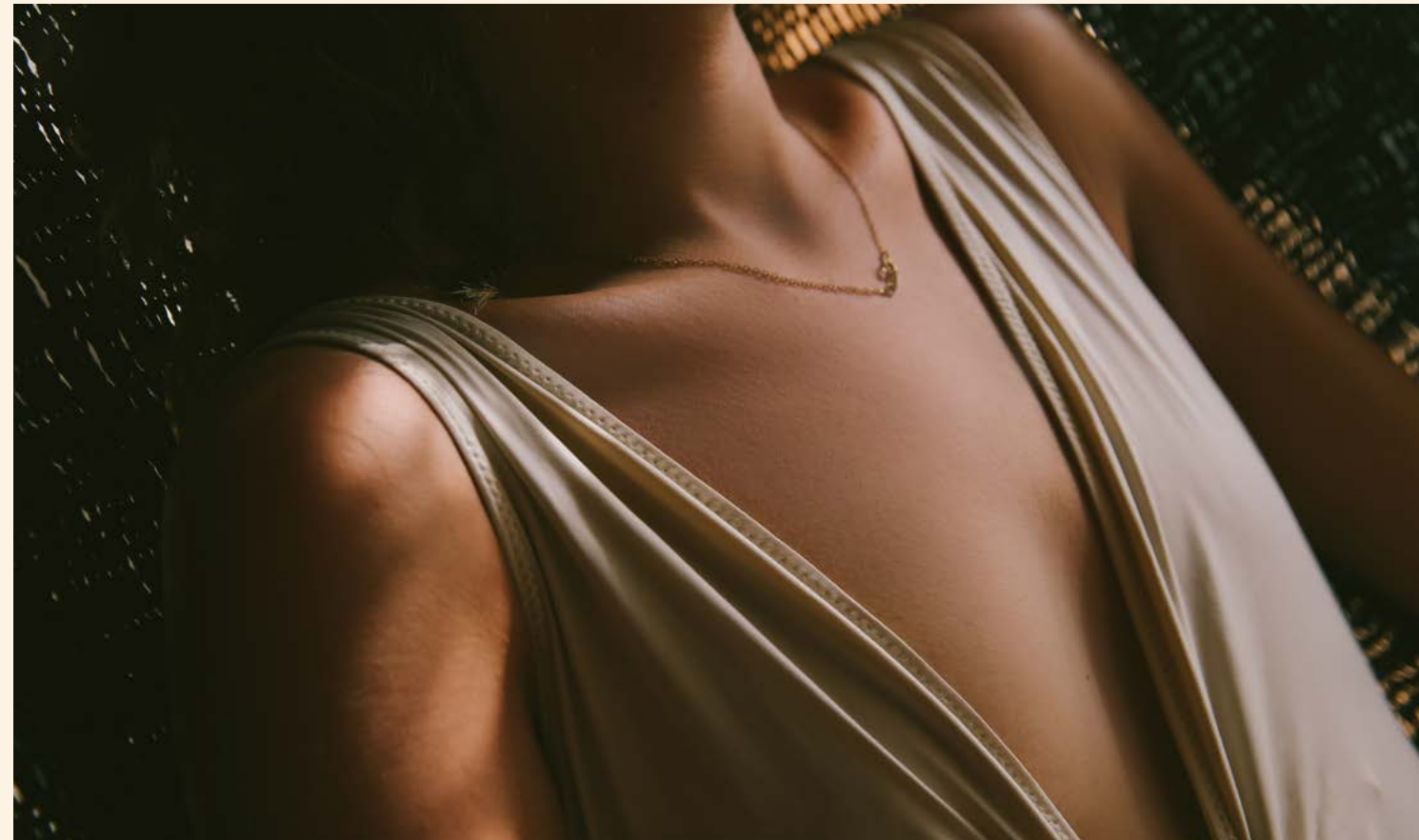


DÉJATE ENCANTAR EN COSTA CARIBE

Be enchanted by Costa Caribe

EL LUJO ES UBICACIÓN:

Luxury is location:



Costa Caribe se vive en Aldea Zamá

*(English) // Costa Caribe condos are located in Aldea Zamá, Tulum's
best development //*



TAN CERCA DEL PARAÍSO

So close to paradise

• • • •

TAN LEJOS DE LA RUTINA

So far from routine





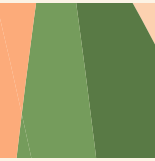
COSTA
CARIBE

EL LUJO ES PAZ:

Luxury is to be at ease:

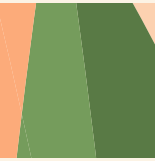


Relájate sin preocupaciones en la *Hamaca Garden* de Costa Caribe
(English) // Let yourself go by the soothing Hamaca Garden at Costa Caribe //









COSTA CARIBE:

Costa Caribe:



UNA CARICIA PENINSULAR

A peninsular caress





El corazón de Tulum late con una
nueva cadencia sofisticada gracias a los
condos Costa Caribe.

*(English) // The heart of Tulum beats with a new sophisticated
cadence due to the condos Costa Caribe.*

AMENIDADES

Amenities



JARDÍN ZEN Y DE YOGA

Zen and Yoga garden

4 ALBERCAS

4 Pools

BAR EN LA ALBERCA

Pool Bar

SNACK BAR



EL LUJO ES NATURALEZA:

Luxury is natural ambience:

• • • •

TERRAZAS VERDES ARMONIZAN
CON LA VISTA DE TULUM

*Green terraces harmonize with the
view of Tulum*

GIMNASIO

Gym

4 ELEVADORES

4 Elevators

TERRAZAS EN ÁREAS VERDES

Terraces in green areas

RECEPCIÓN

Lobby

17





CENTRO DE NEGOCIOS

Business center

ÁREA LOUNGE

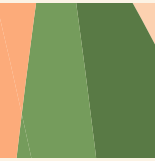
Lounge Area

ACCESO CONTROLADO 24 HRS

Controlled access 24 hrs

ESTACIONAMIENTO

Parking









La mejor zona de Tulum para vivir en el paraíso.
Departamentos disponibles desde 50 m² — 160 m²

*(English) // The best area of Tulum to live in paradise.
Apartments available from 50 m² — 160 m²*



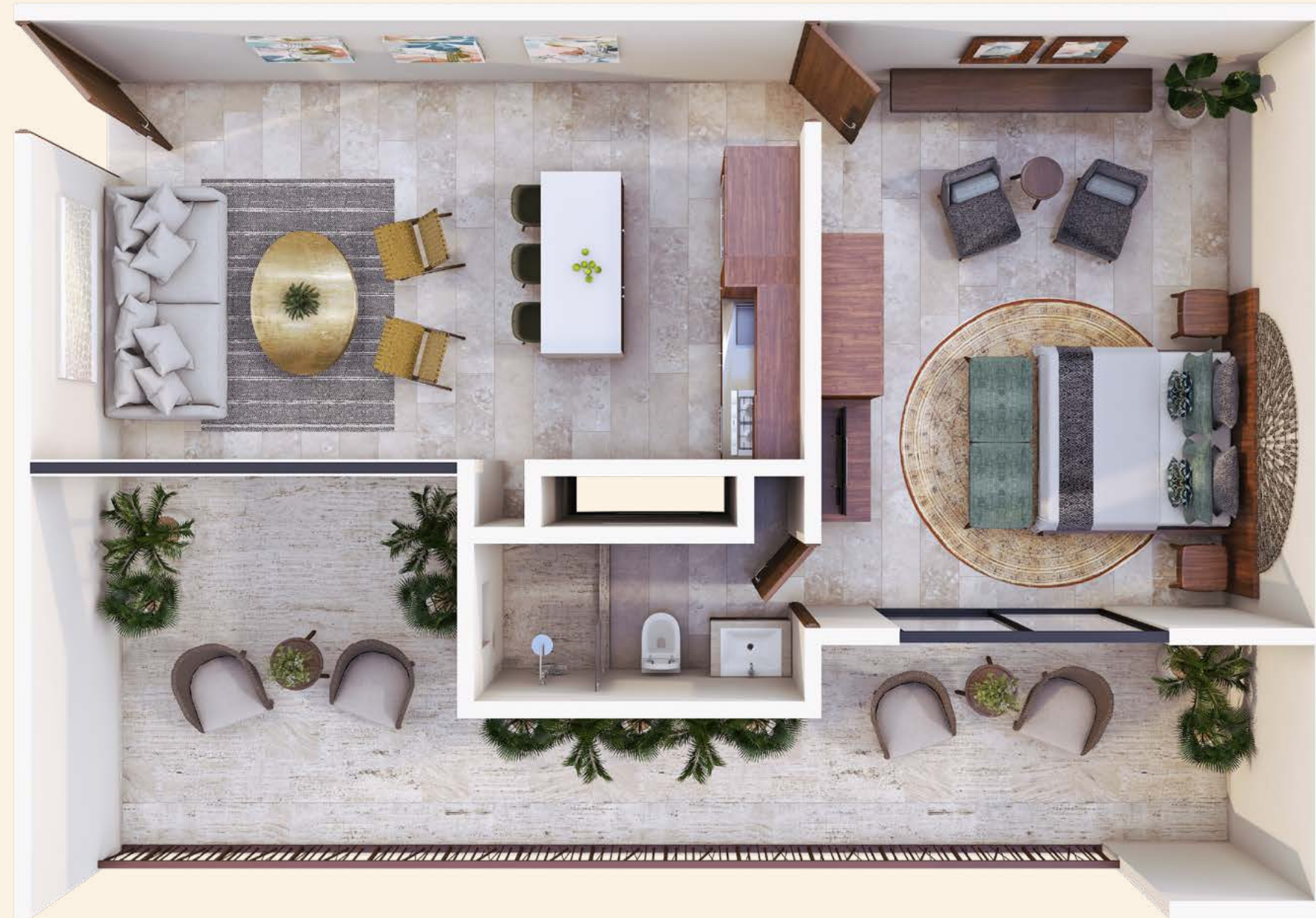
66 departamentos en 4 plantas,
1 y 2 recámaras.

*(English) // 66 condos on 4 floors,
1 and 2 bedrooms.*



1 Recámara / 1 Bedroom:

<i>Interior / Interior:</i>	<i>45.30 m² / 487.60 ft²</i>
<i>Terraza o Balcón / Terrace or Balcony:</i>	<i>11.45 m² / 123.24 ft²</i>
<i>Total / Total:</i>	<i>56.75 m² / 610.85 ft²</i>



1 Recámara / 1 Bedroom:

<i>Interior / Interior:</i>	<i>61.57 m² / 662.73 ft²</i>
<i>Terraza o Balcón / Terrace or Balcony:</i>	<i>32.30 m² / 347.67 ft²</i>
<i>Total / Total:</i>	<i>93.87 m² / 1010.40 ft²</i>



25

1 Recámara / 1 Bedroom:

<i>Interior / Interior:</i>	<i>50.29 m² / 541.31 ft²</i>
<i>Terraza o Balcón / Terrace or Balcony:</i>	<i>9.50 m² / 102.25 ft²</i>
<i>Total / Total:</i>	<i>59.79 m² / 643.57 ft²</i>



1 Recámara / 1 Bedroom:

<i>Interior / Interior:</i>	<i>51.40 m² / 553.27 ft²</i>
<i>Terraza o Balcón / Terrace or Balcony:</i>	<i>17.97 m² / 193.42 ft²</i>
<i>Total / Total:</i>	<i>69.37 m² / 746.69 ft²</i>



Penthouse / Penthouse:

<i>Interior / Interior:</i>	<i>99.84 m² / 1074.66 ft²</i>
<i>Terraza o Balcón / Terrace or Balcony:</i>	<i>50.45 m² / 543.03 ft²</i>
<i>Solarium / Solarium:</i>	<i>41.40 m² / 445.62 ft²</i>
<i>Total / Total:</i>	<i>191.69 m² / 2063.33 ft²</i>



Penthouse / Penthouse:

<i>Interior / Interior:</i>	<i>99.93 m² / 1075.63 ft²</i>
<i>Terraza o Balcón / Terrace or Balcony:</i>	<i>11.70 m² / 125.93 ft²</i>
<i>Solarium / Solarium:</i>	<i>42.94 m² / 462.20 ft²</i>
<i>Total / Total:</i>	<i>154.57 m² / 1663.77 ft²</i>

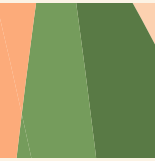


Penthouse / Penthouse:

<i>Interior / Interior:</i>	<i>98.95 m² / 1065.08 ft²</i>
<i>Terraza o Balcón / Terrace or Balcony:</i>	<i>11.70 m² / 125.93 ft²</i>
<i>Solarium / Solarium:</i>	<i>42.94 m² / 462.20 ft²</i>
<i>Total / Total:</i>	<i>153.59 m² / 1653.22 ft²</i>



30









TAN CERCA DE LA PLAYA,

So close to the beach,

• • • •

TAN LEJOS DE LA RUTINA.

So far from the routine.