



ANEMONA

HUACHINANGO
CAPITAL

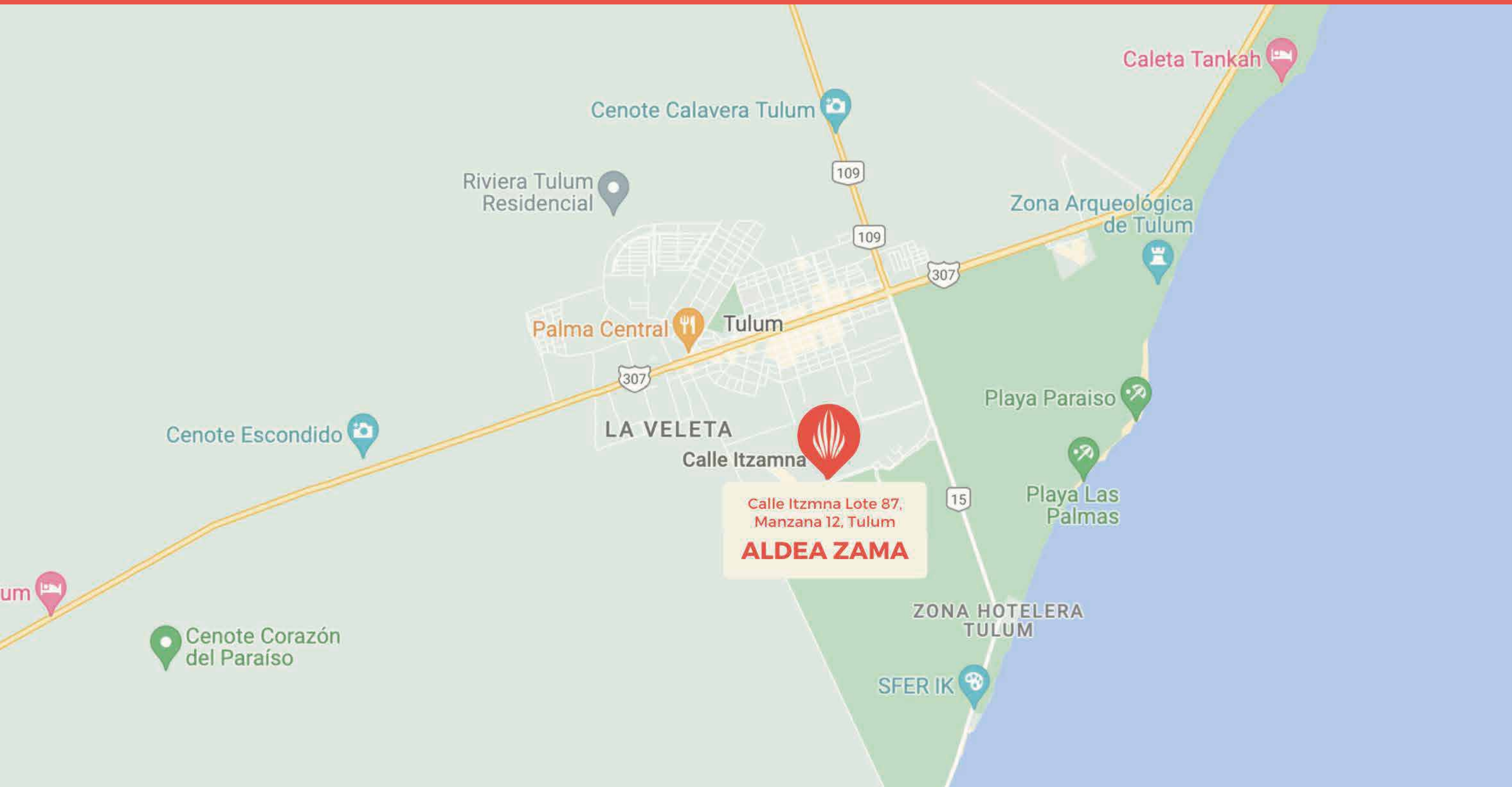
PROYECTO

EDIFICIO COMERCIAL 3 NIVELES + ROOF TOP

Destinado a pequeños comercios y servicios en búsqueda de zonas de alta plusvalía y crecimiento dentro de un entorno acogedor y seguro.



UBICACIÓN



Cenote Calavera Tulum

Riviera Tulum
Residencial

Zona Arqueológica
de Tulum

Palma Central Tulum

Cenote Escondido

LA VELETA

Calle Itzamna

Calle Itzamna Lote 87,
Manzana 12, Tulum
ALDEA ZAMA

Playa Paraiso

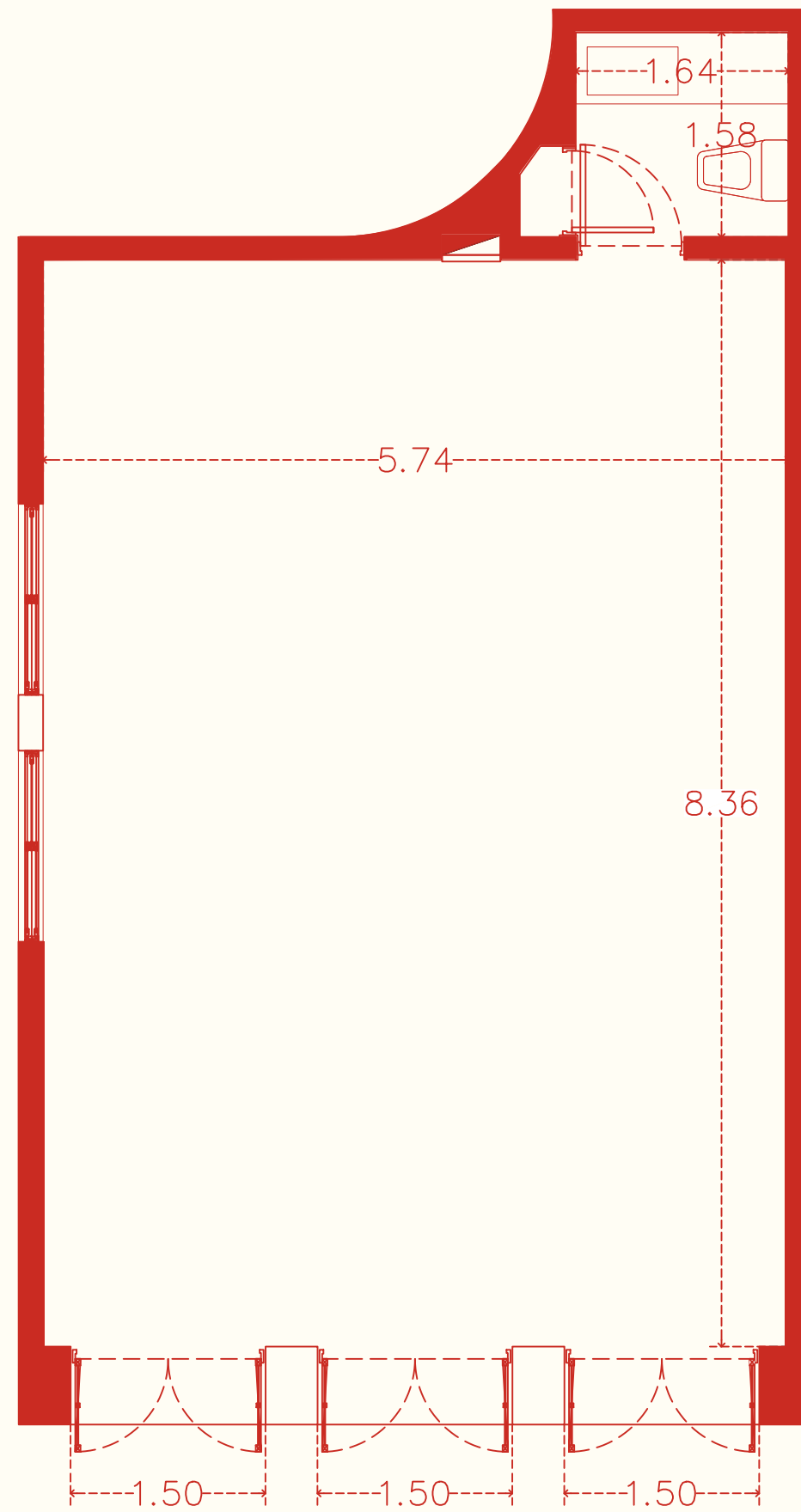
Playa Las
Palmas

Cenote Corazón
del Paraíso

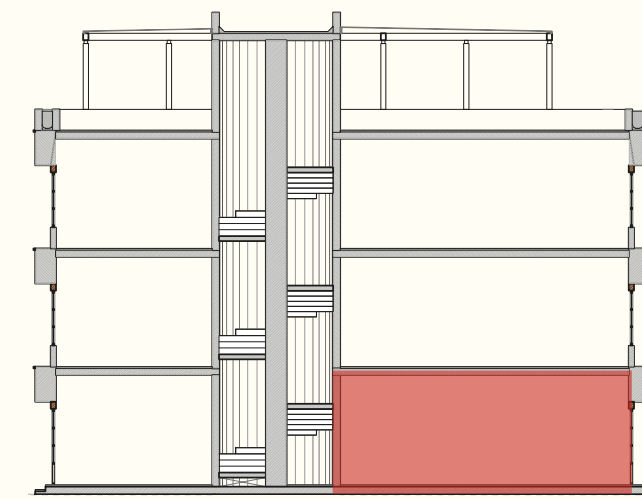
ZONA HOTELERA
TULUM

SFER IK

No.101 59.7 m²

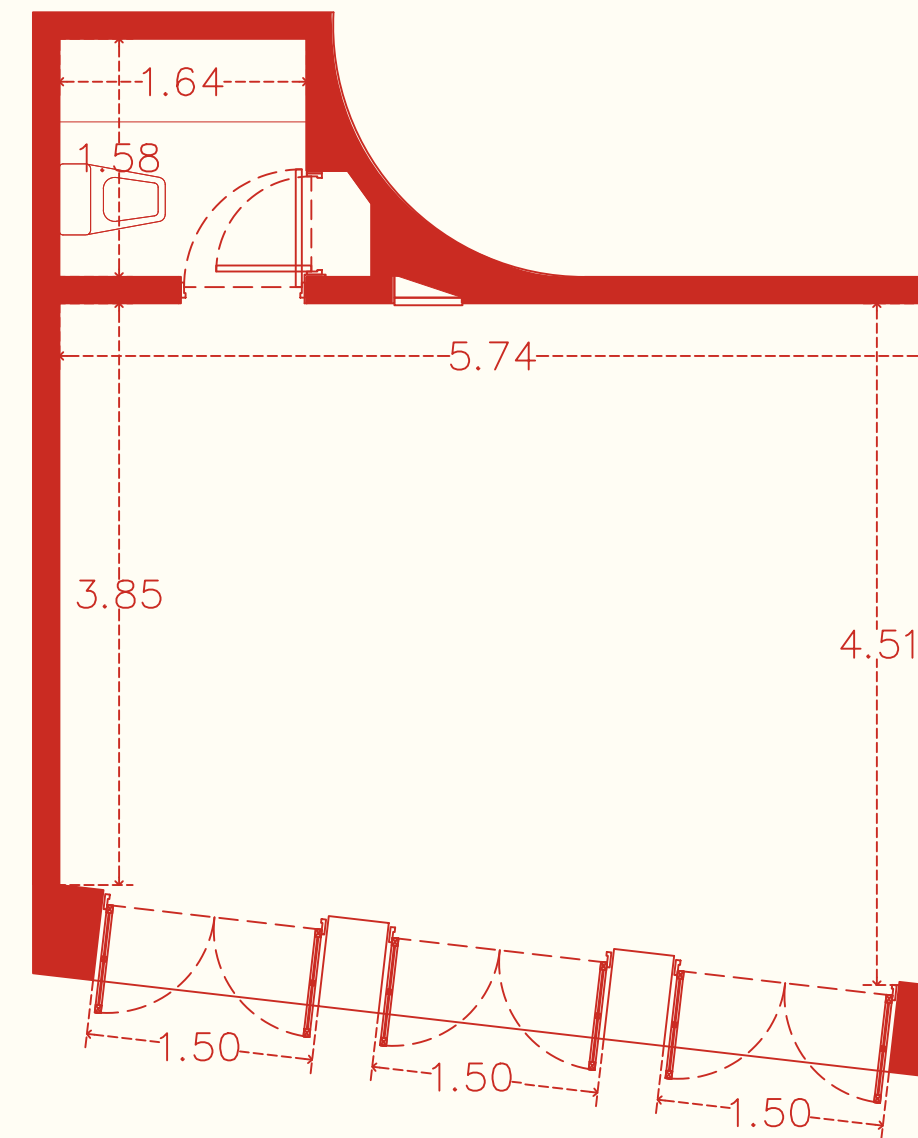


Frente Av. Principal

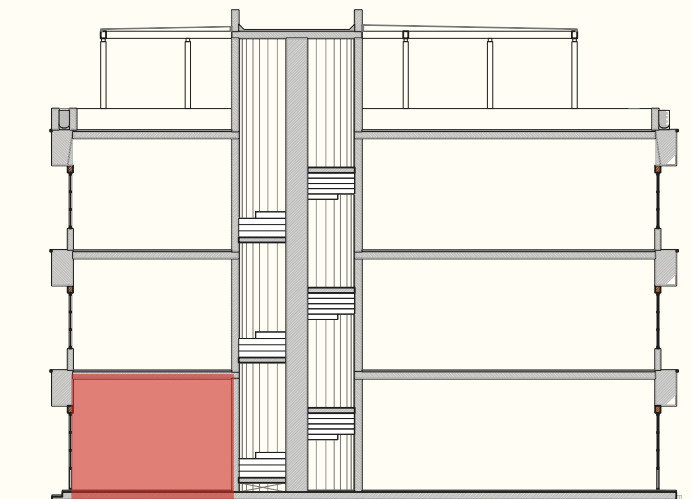


CORTE ESQUÉMÁTICO

No.102 34.2 m²



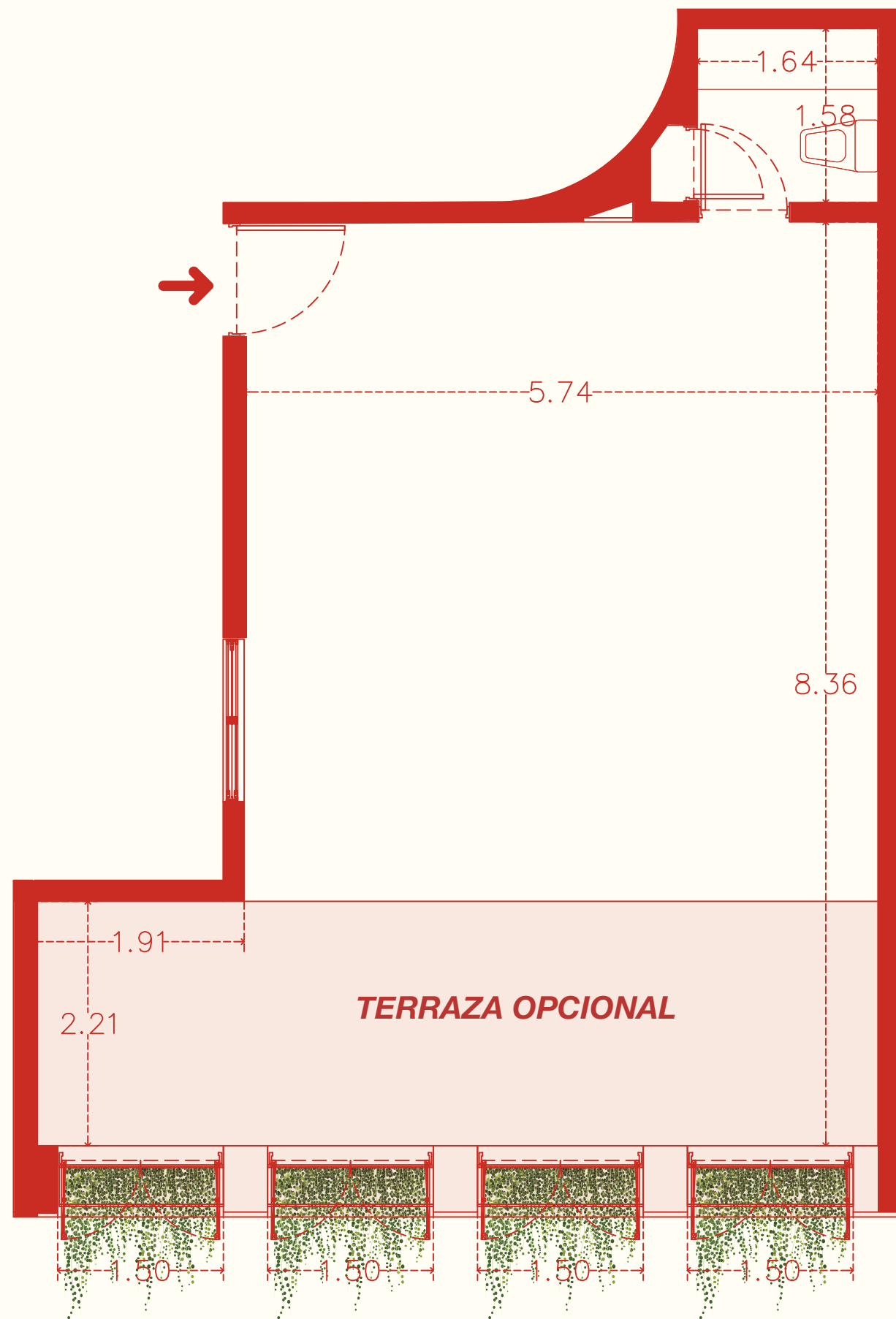
Frente Corredor
peatonal



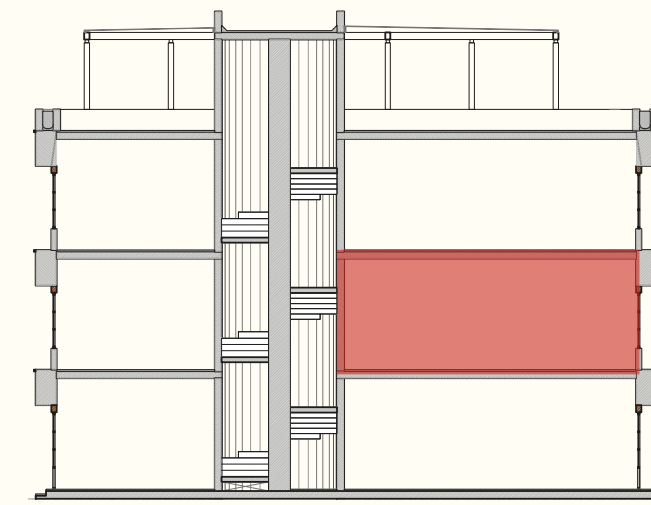
CORTE ESQUÉMÁTICO



No.201 65.4 m²

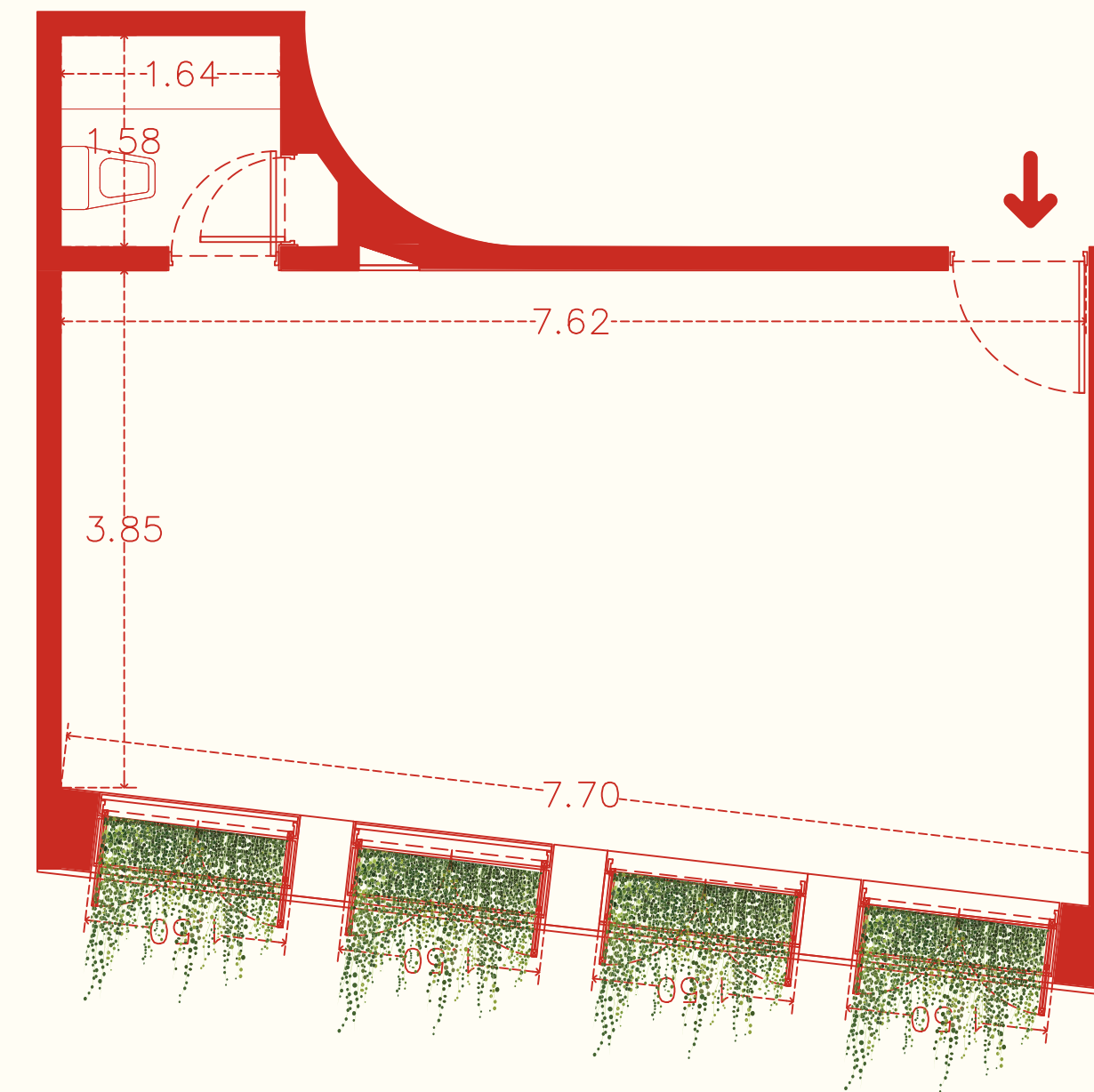


Frente Av. Principal

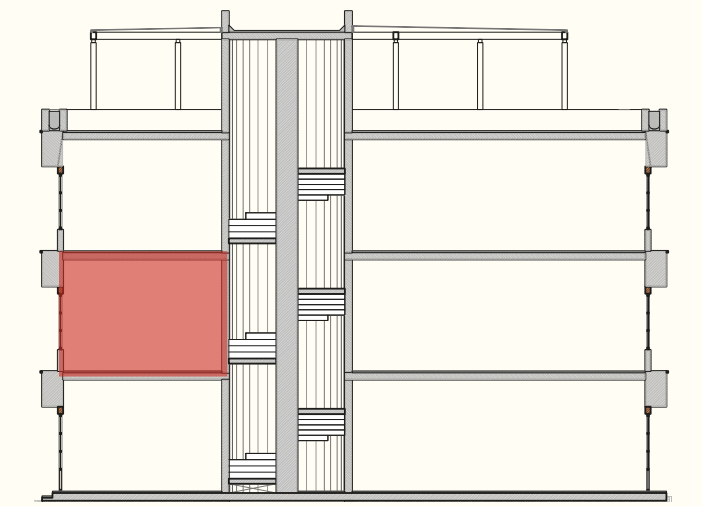


CORTE ESQUÉMATICO

No.202 44.5 m²



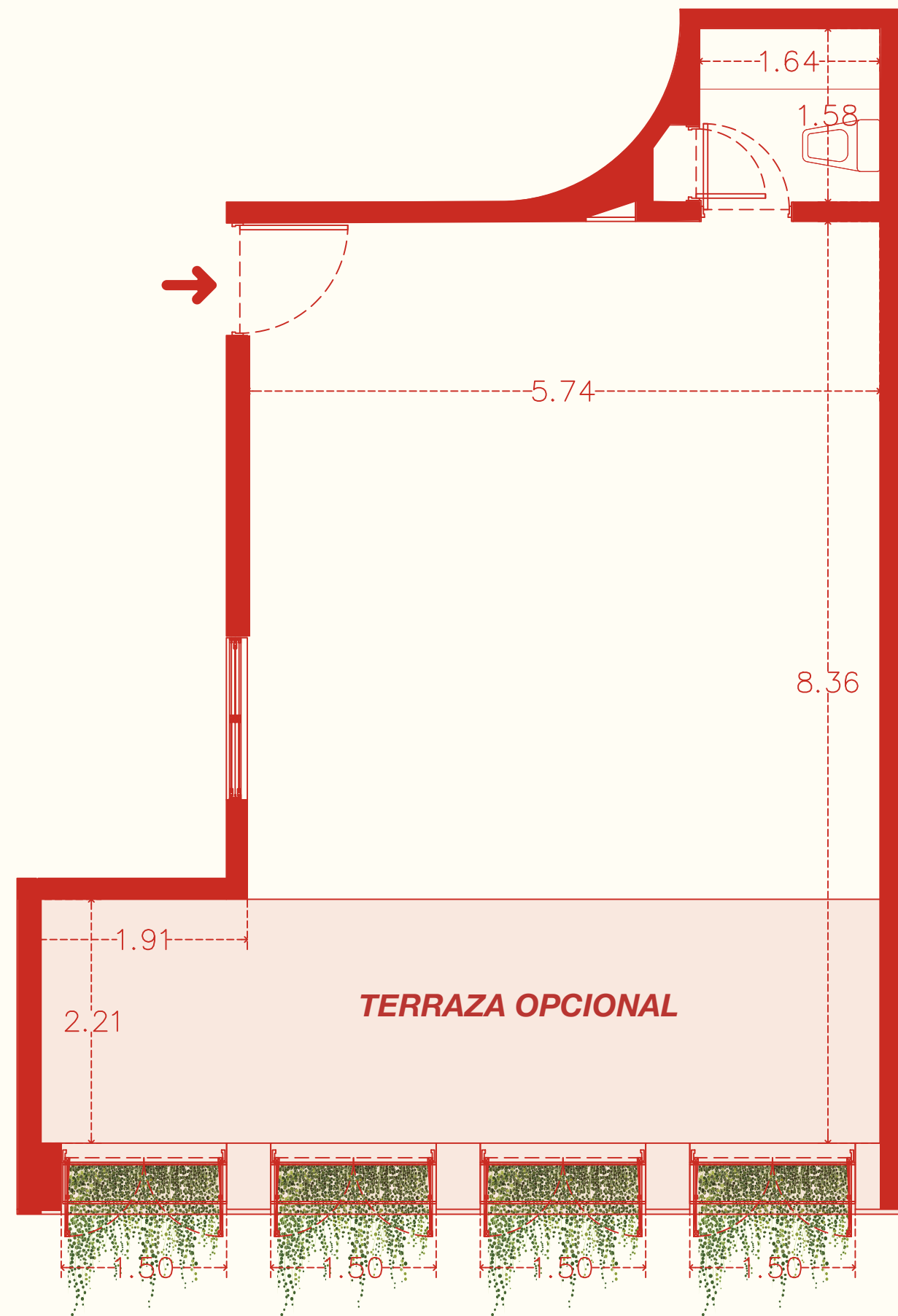
Frente Corredor
peatonal



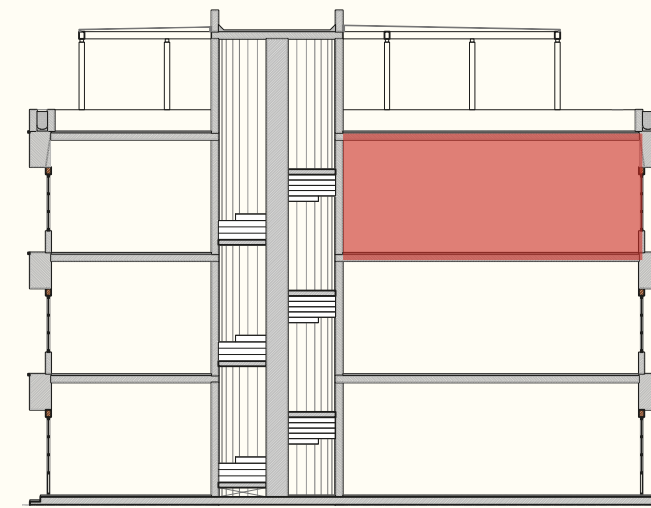
CORTE ESQUÉMATICO



No.301 65.4 m²

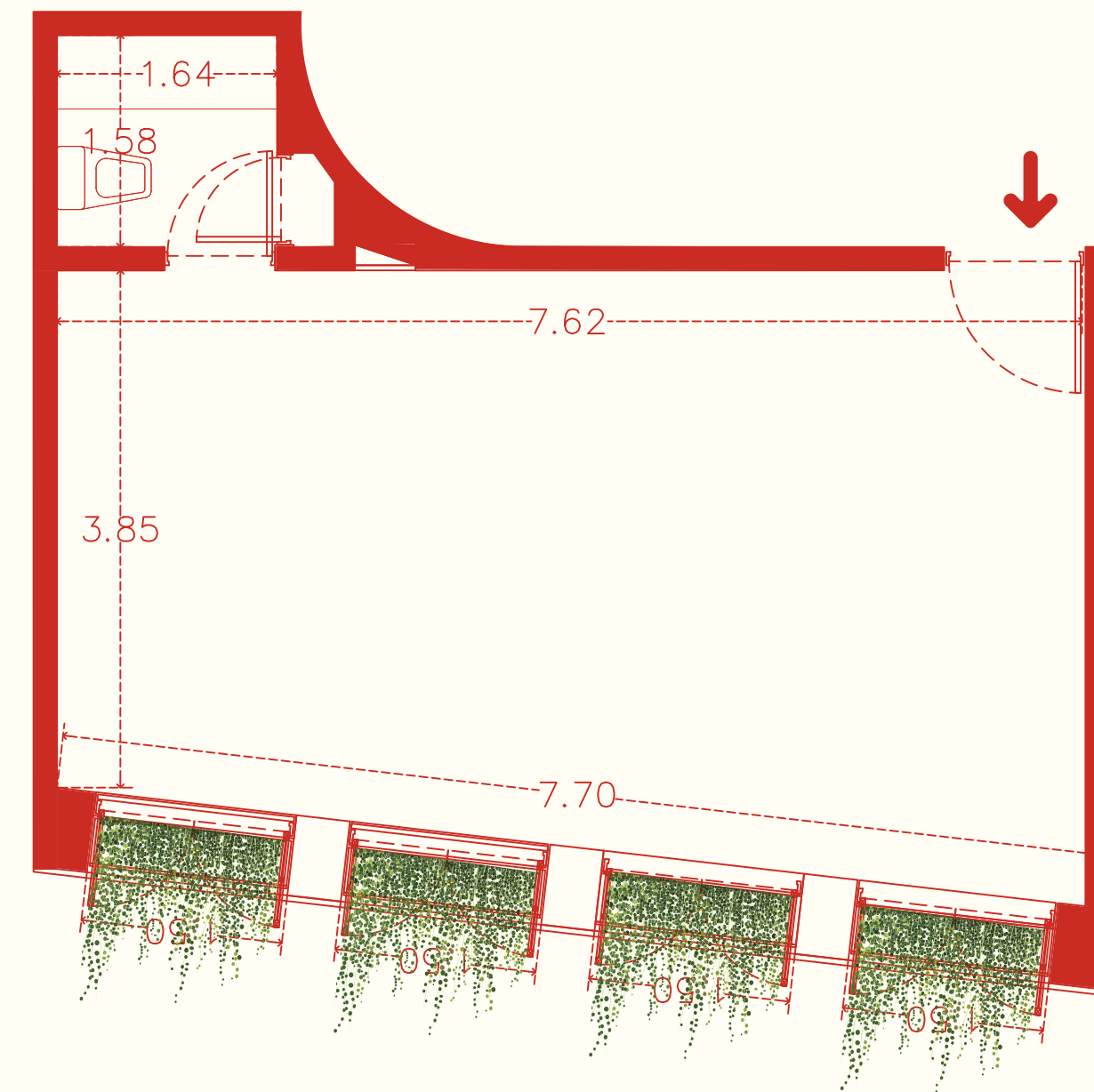


Frente Av. Principal

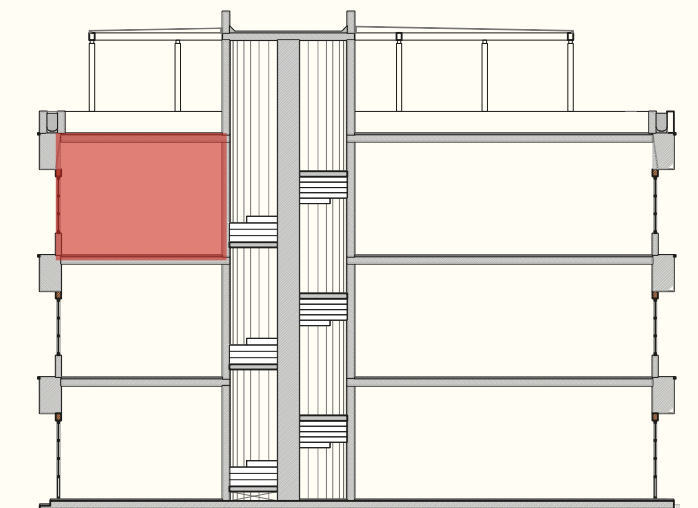


CORTE ESQUÉMÁTICO

No.302 45.5 m²



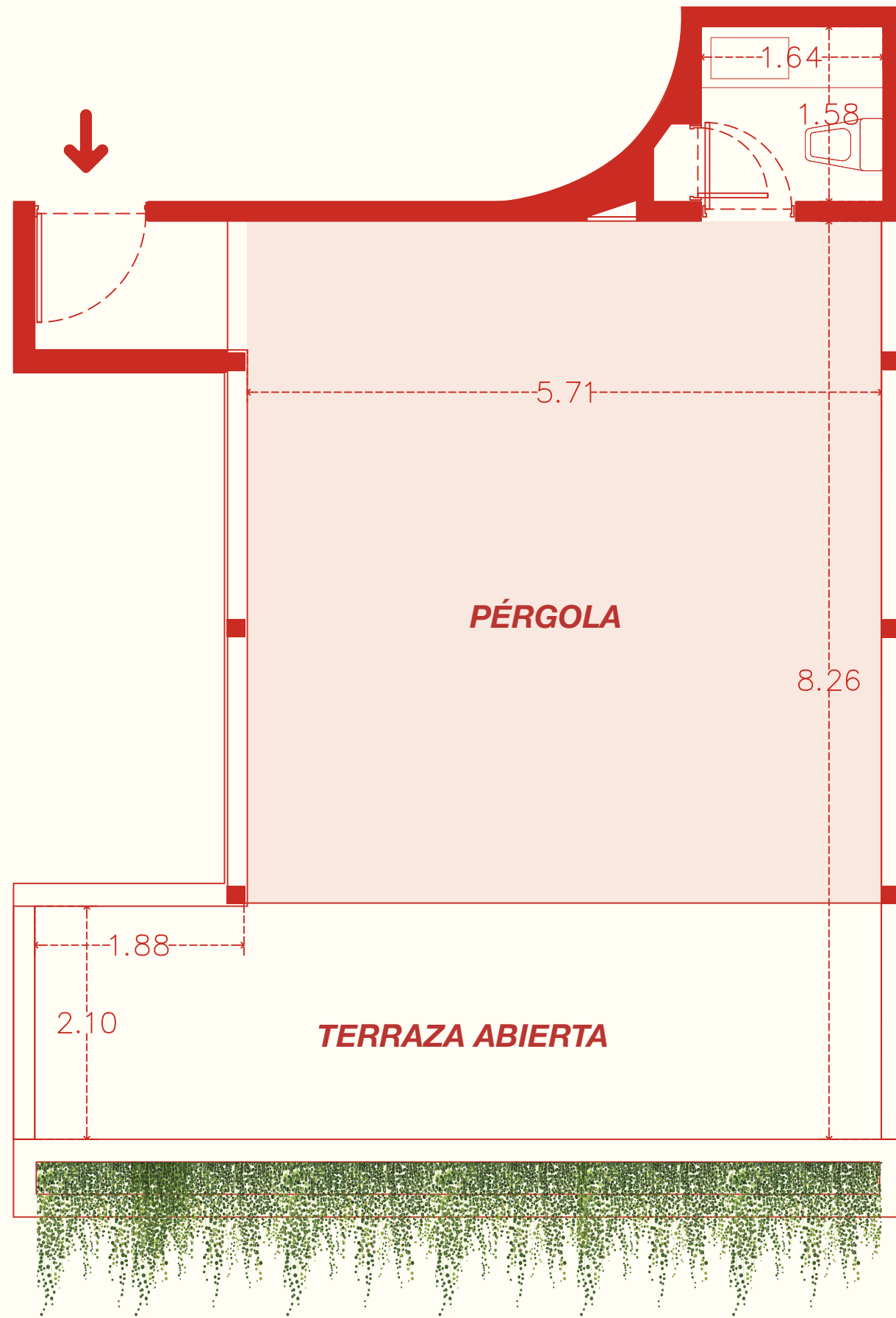
Frente Corredor
peatonal



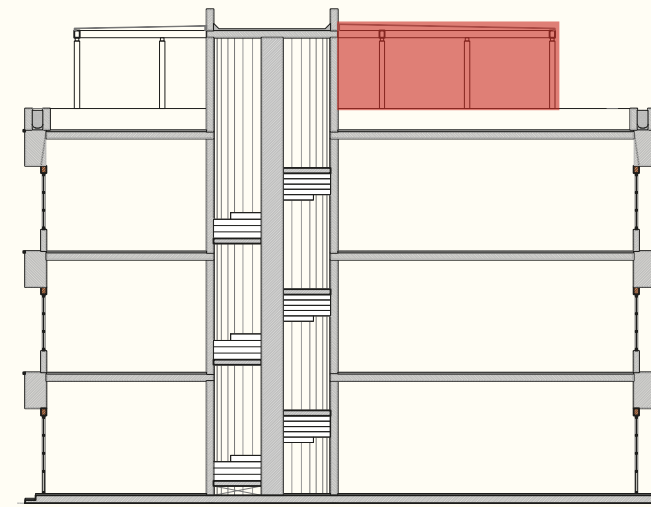
CORTE ESQUÉMÁTICO



No.401 68.4 m²

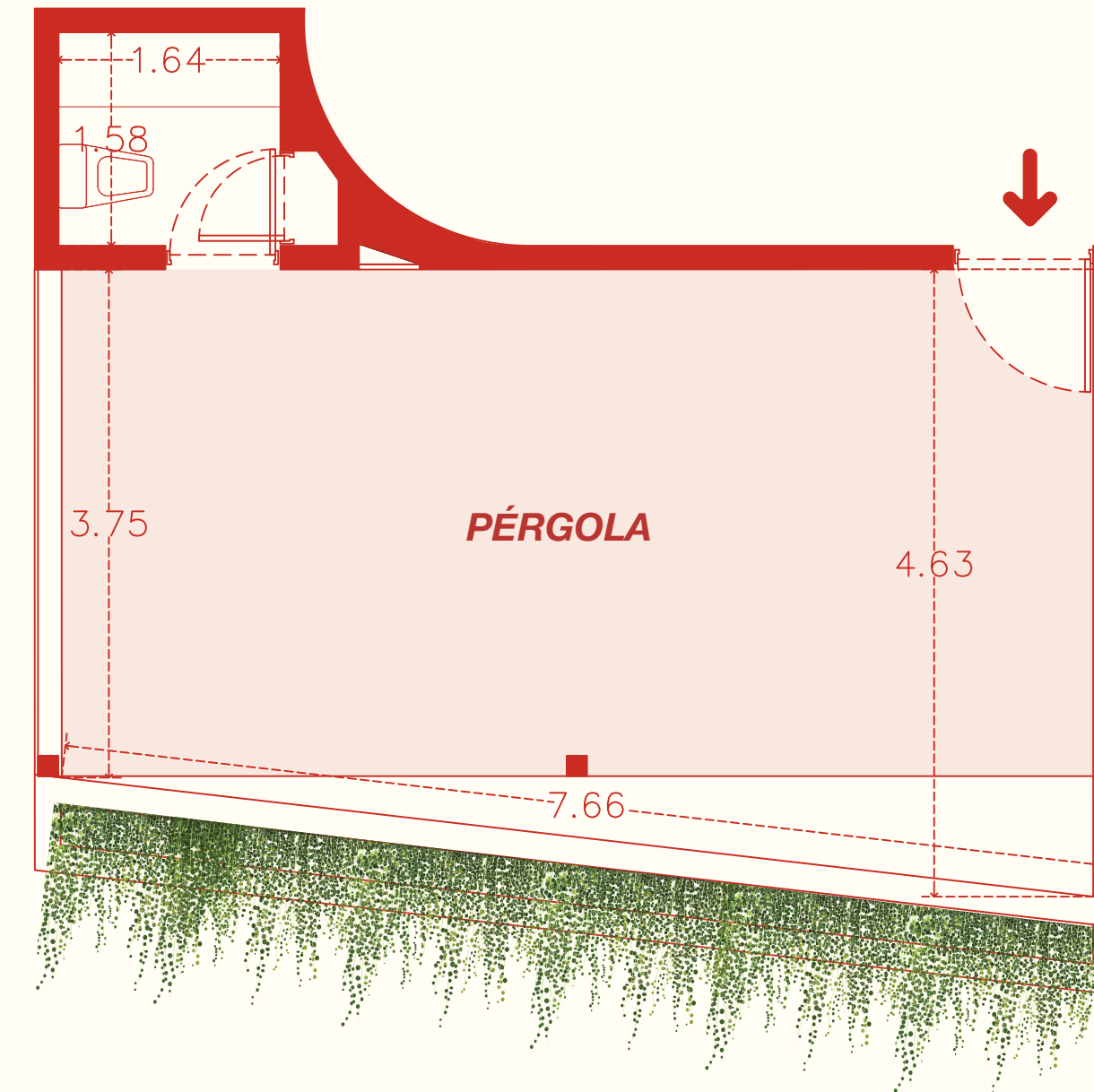


Frente Av. Principal

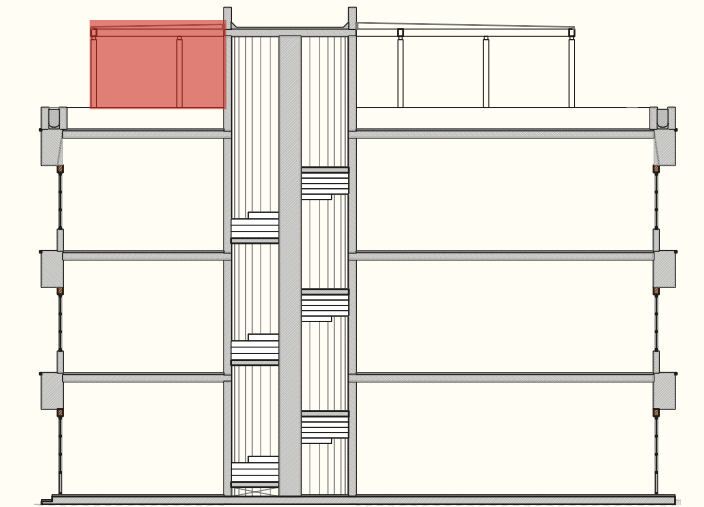


CORTE ESQUÉMÁTICO

No.402 44.5 m²



Frente Corredor
peatonal



CORTE ESQUÉMÁTICO



ANEMONA

HUACHINANGO
CAPITAL