



ANEMONA

HUACHINANGO
CAPITAL

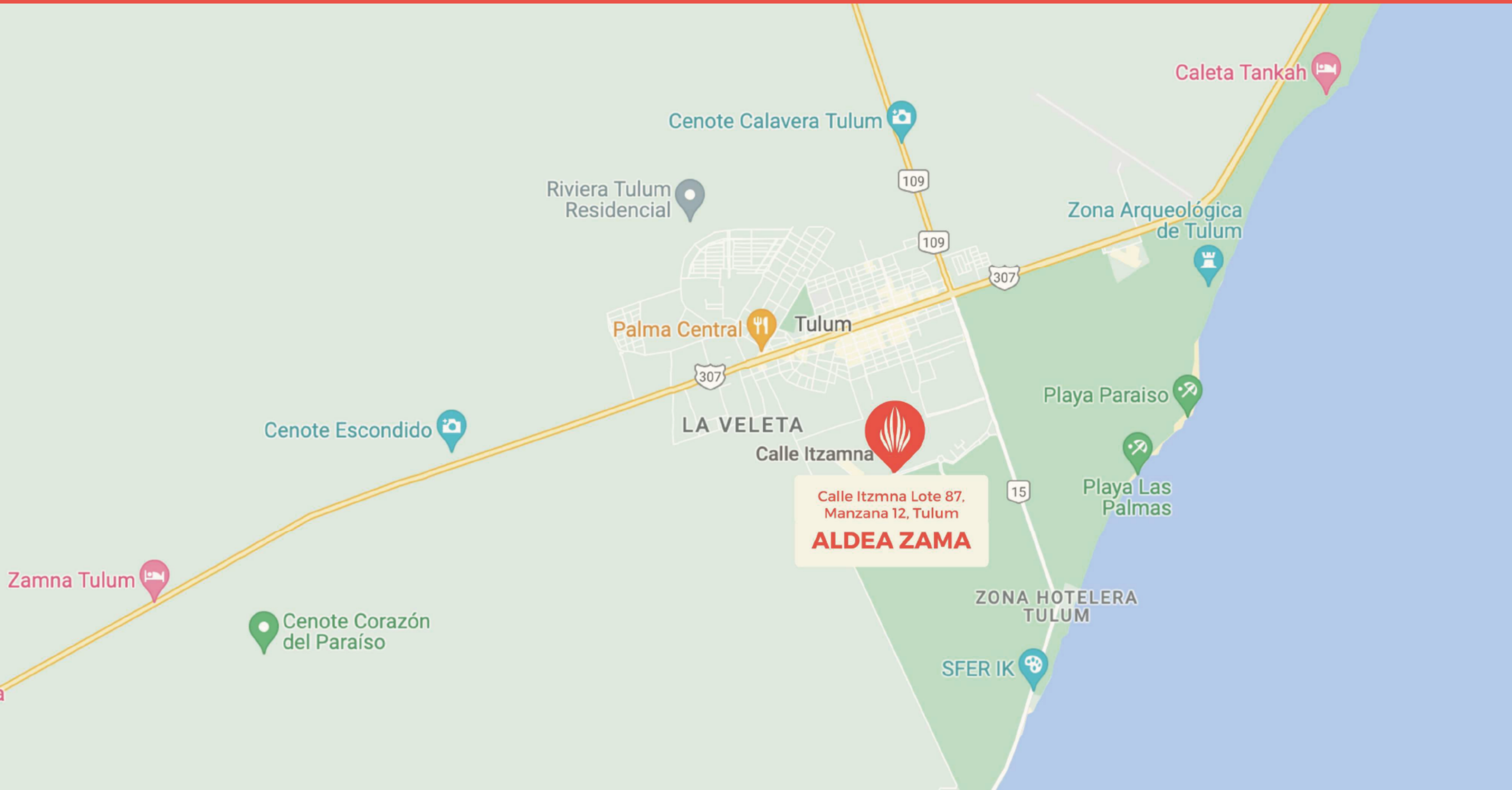
PROJECT

COMMERCIAL BUILDING 3 LEVELS + ROOF TOP

Aimed at small businesses and services in search of areas of high added value and growth within a welcoming and safe environment.

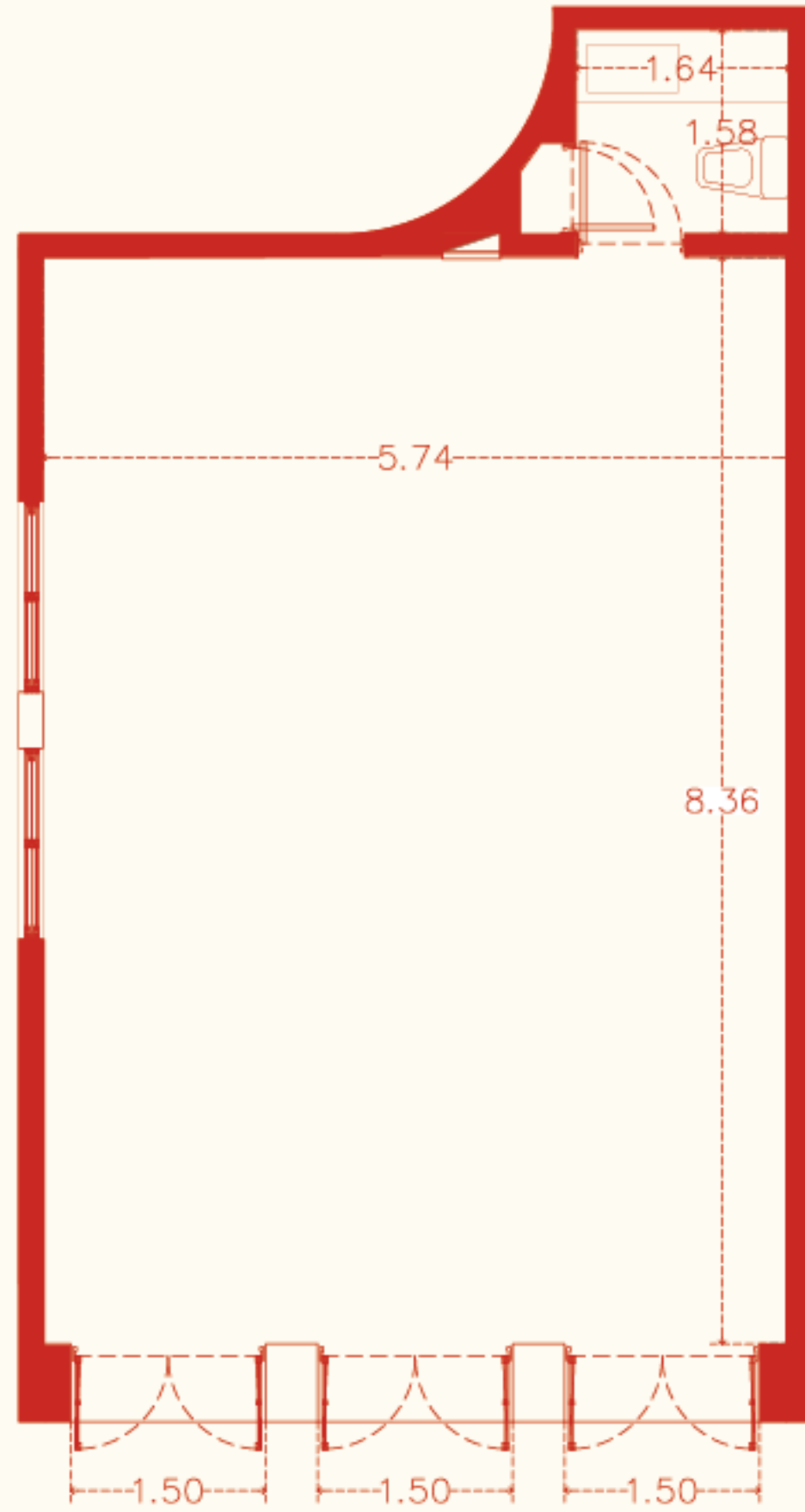


LOCATION

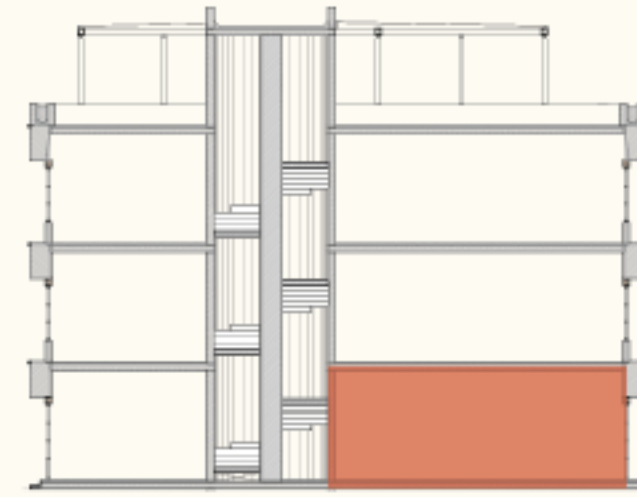


No.101

642 qsft²



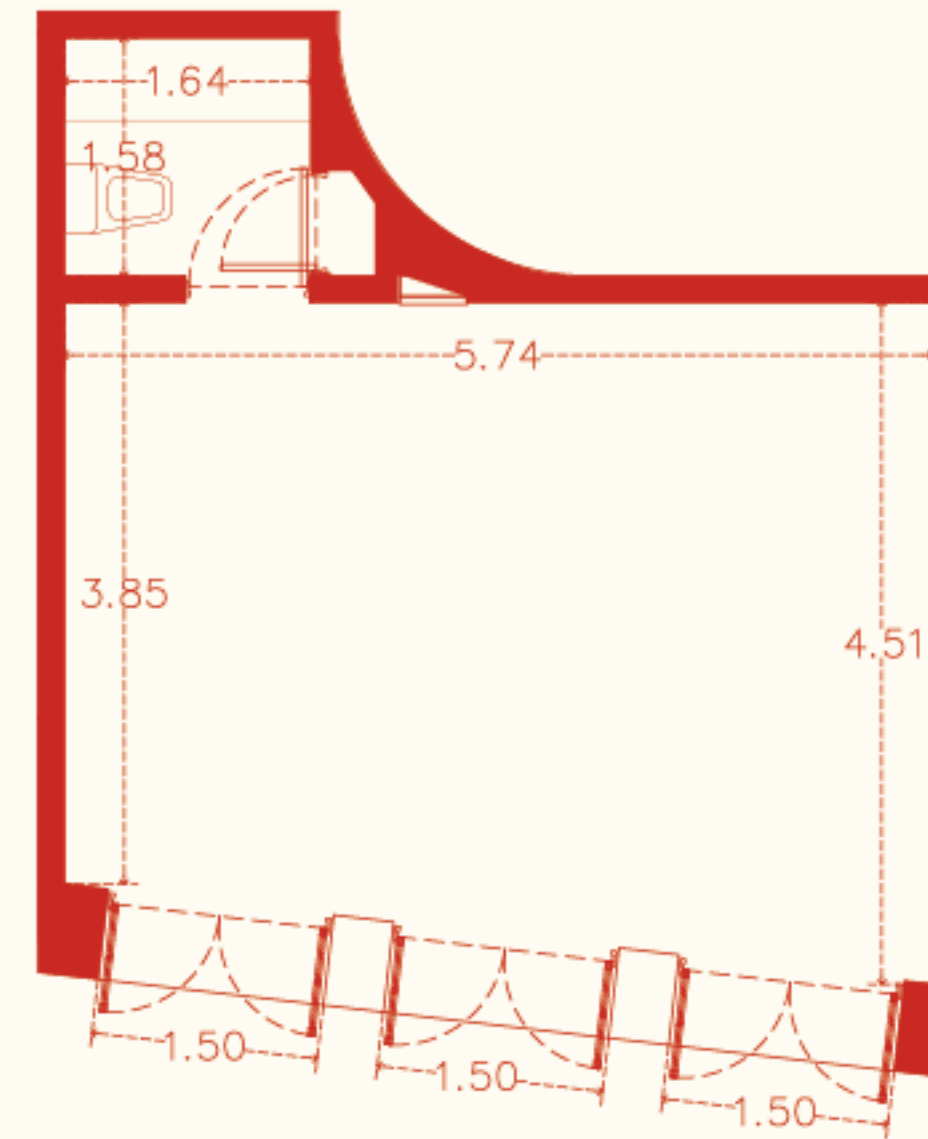
Main avenue front



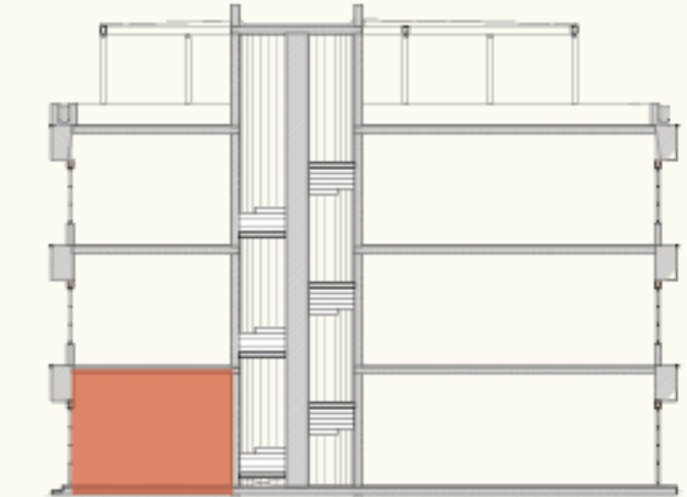
SCHEMATIC SECTION

No.102

368 qsft²



Front pedestrian Street



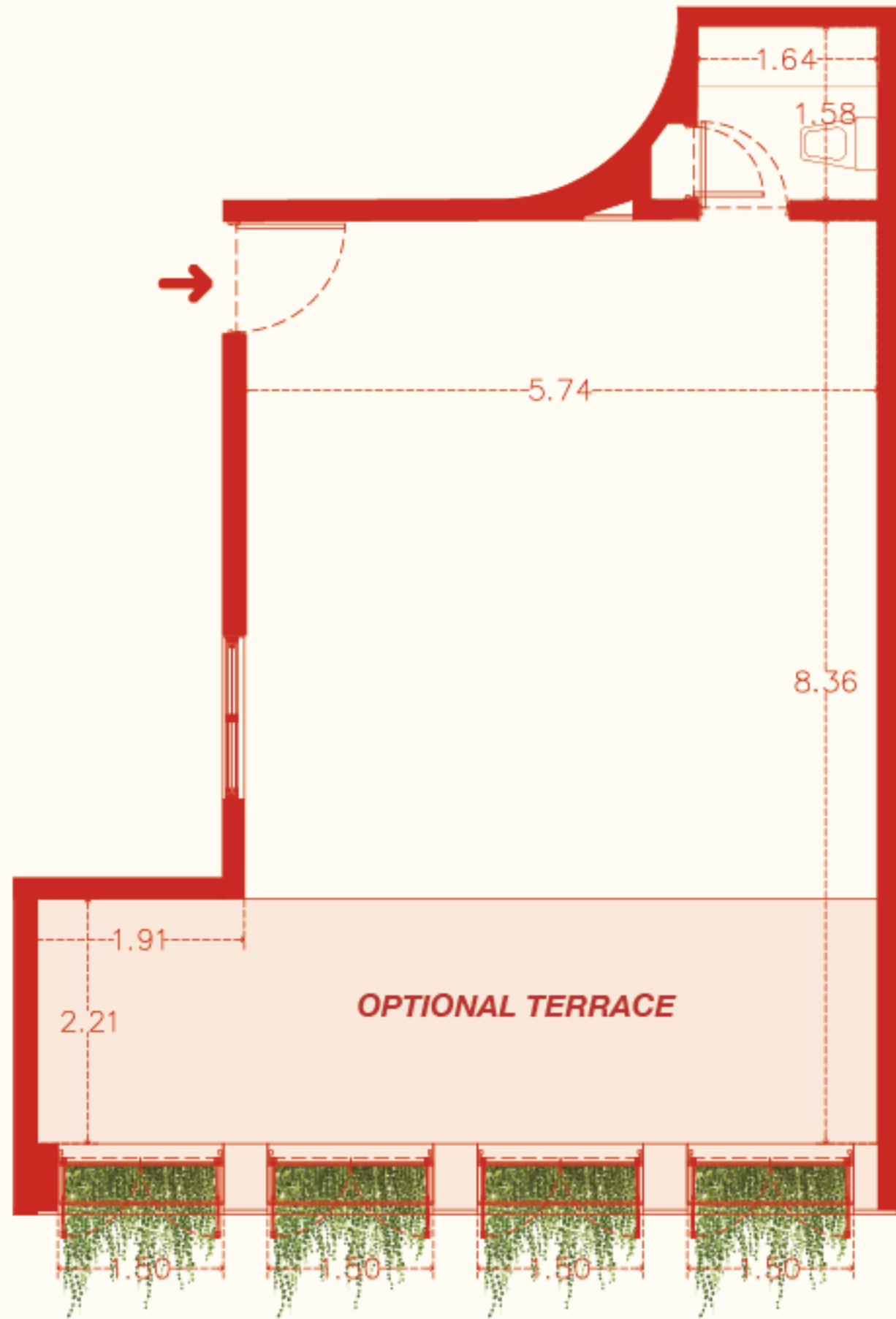
SCHEMATIC SECTION



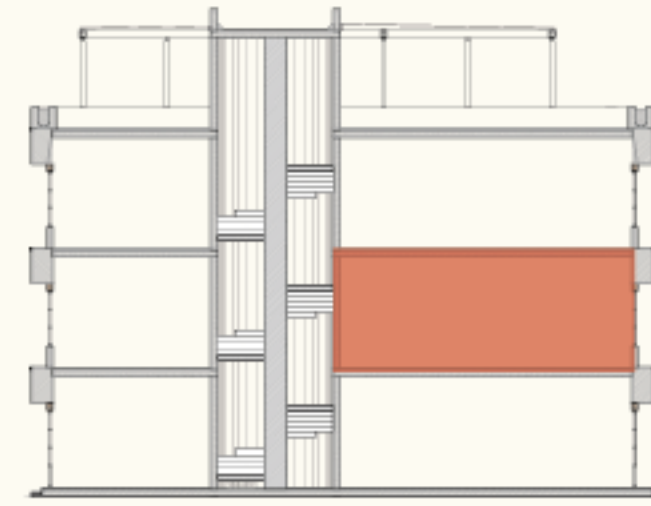
TYOLOGIES

No.201

703 qsft²



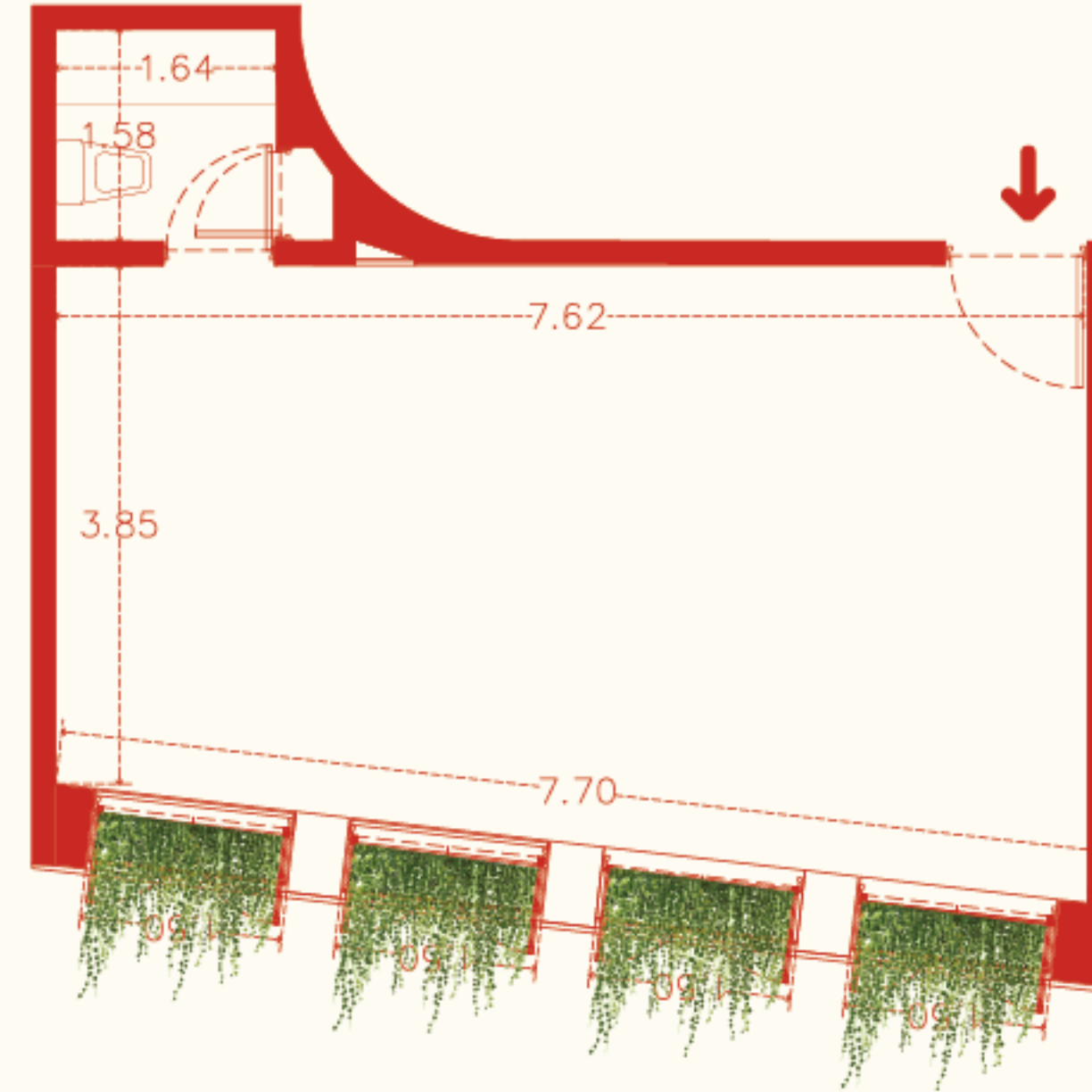
Main avenue front



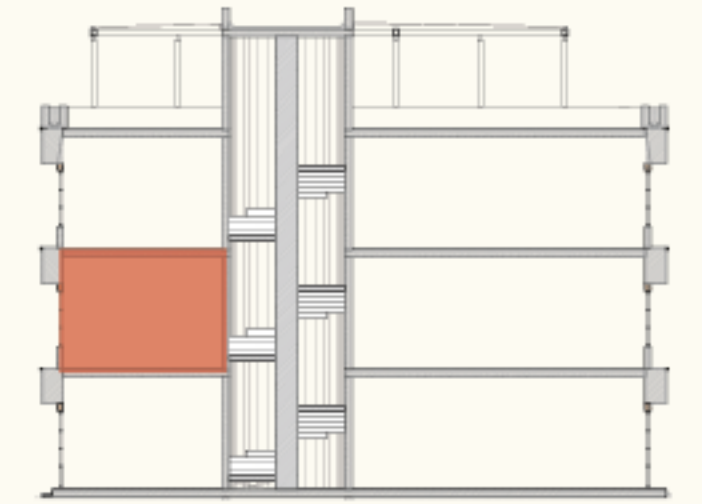
SCHEMATIC SECTION

No.202

478 qsft²



Front pedestrian Street



SCHEMATIC SECTION

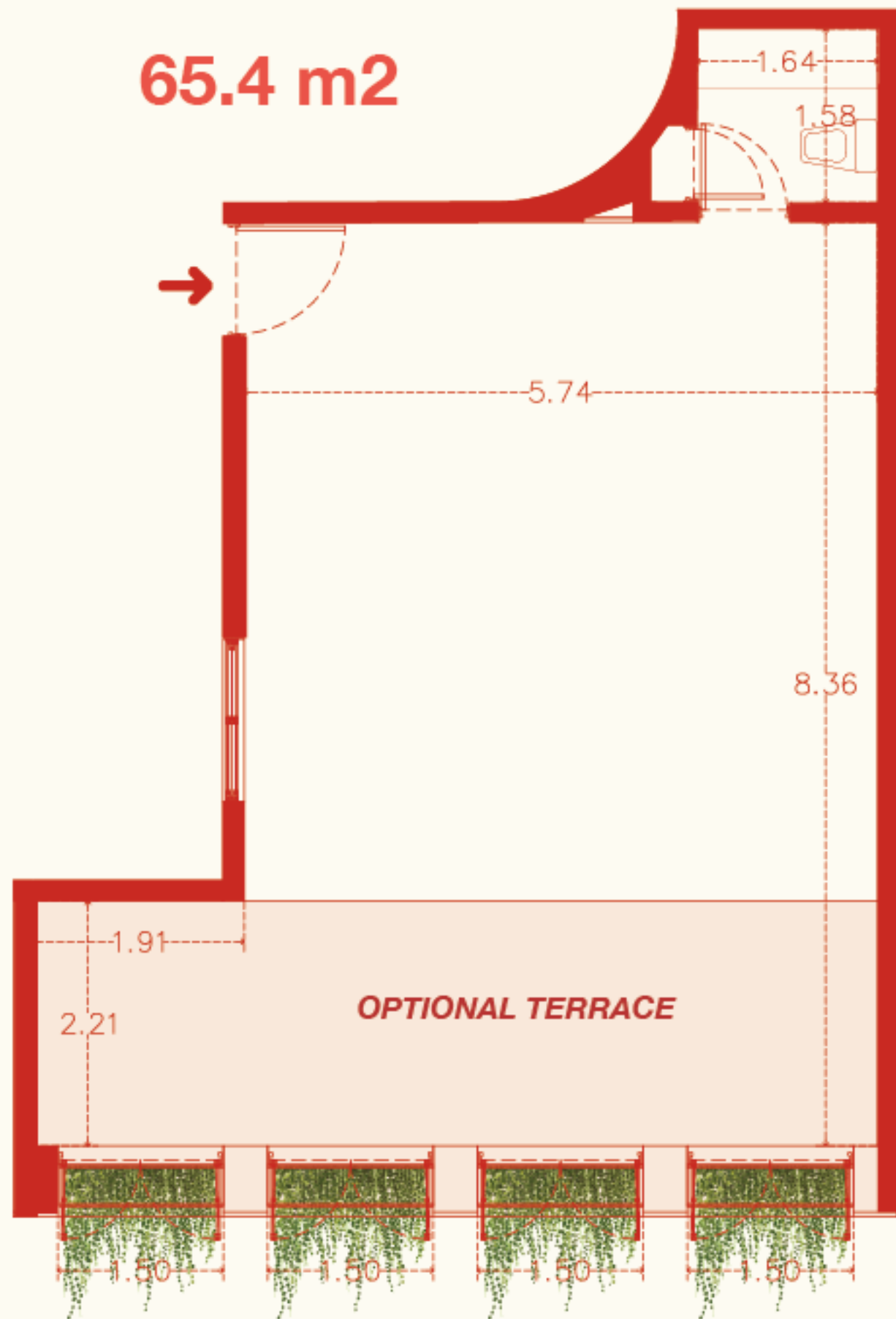


TYOLOGIES

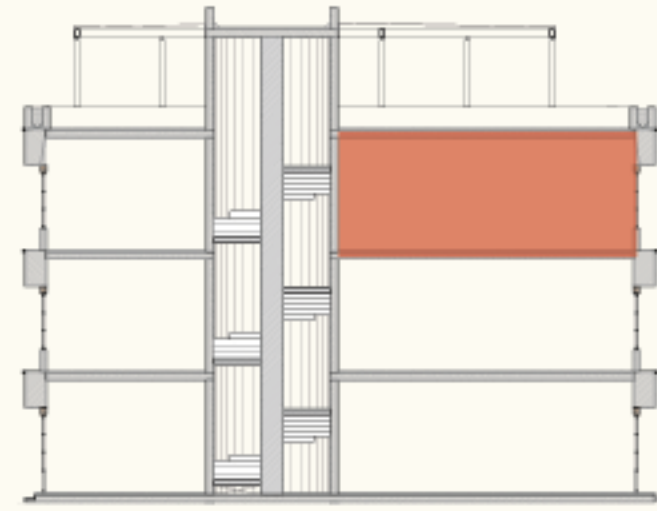
No.301

703 qsft²

65.4 m²



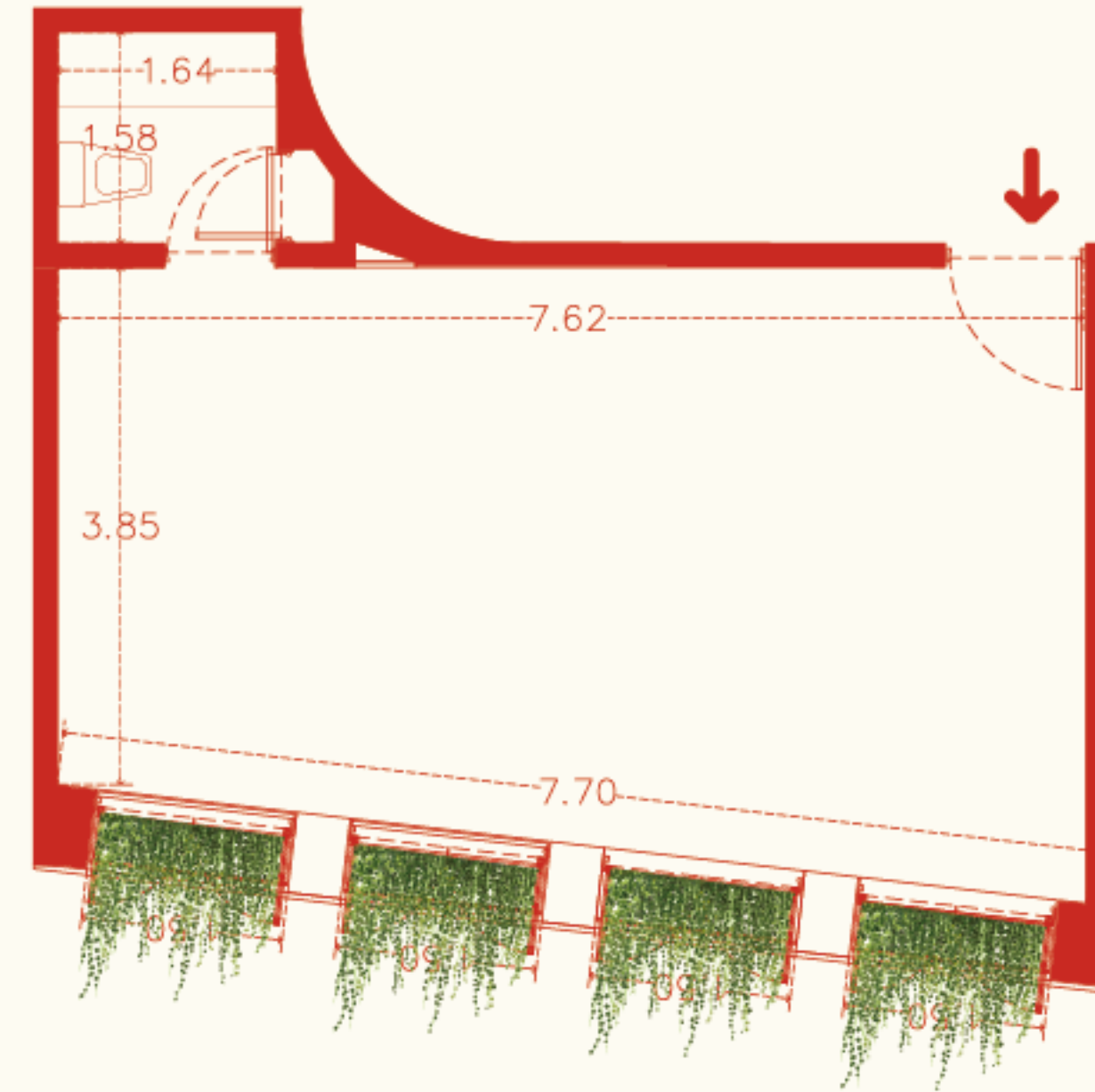
Main avenue front



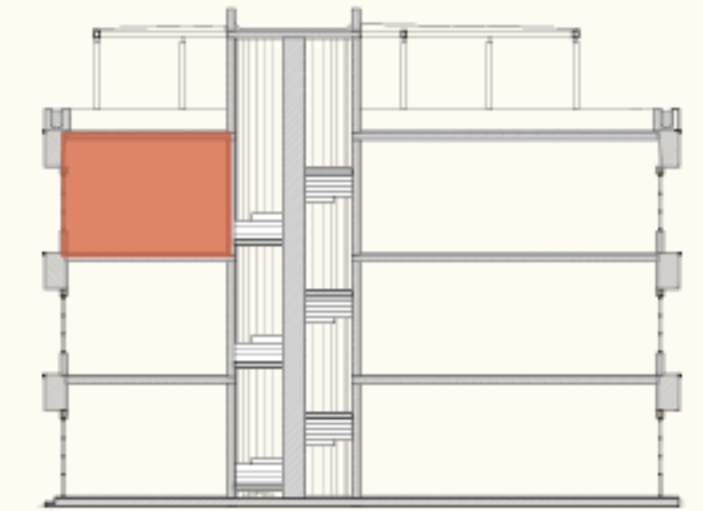
SCHEMATIC SECTION

No.302

489 qsft²



Front pedestrian Street



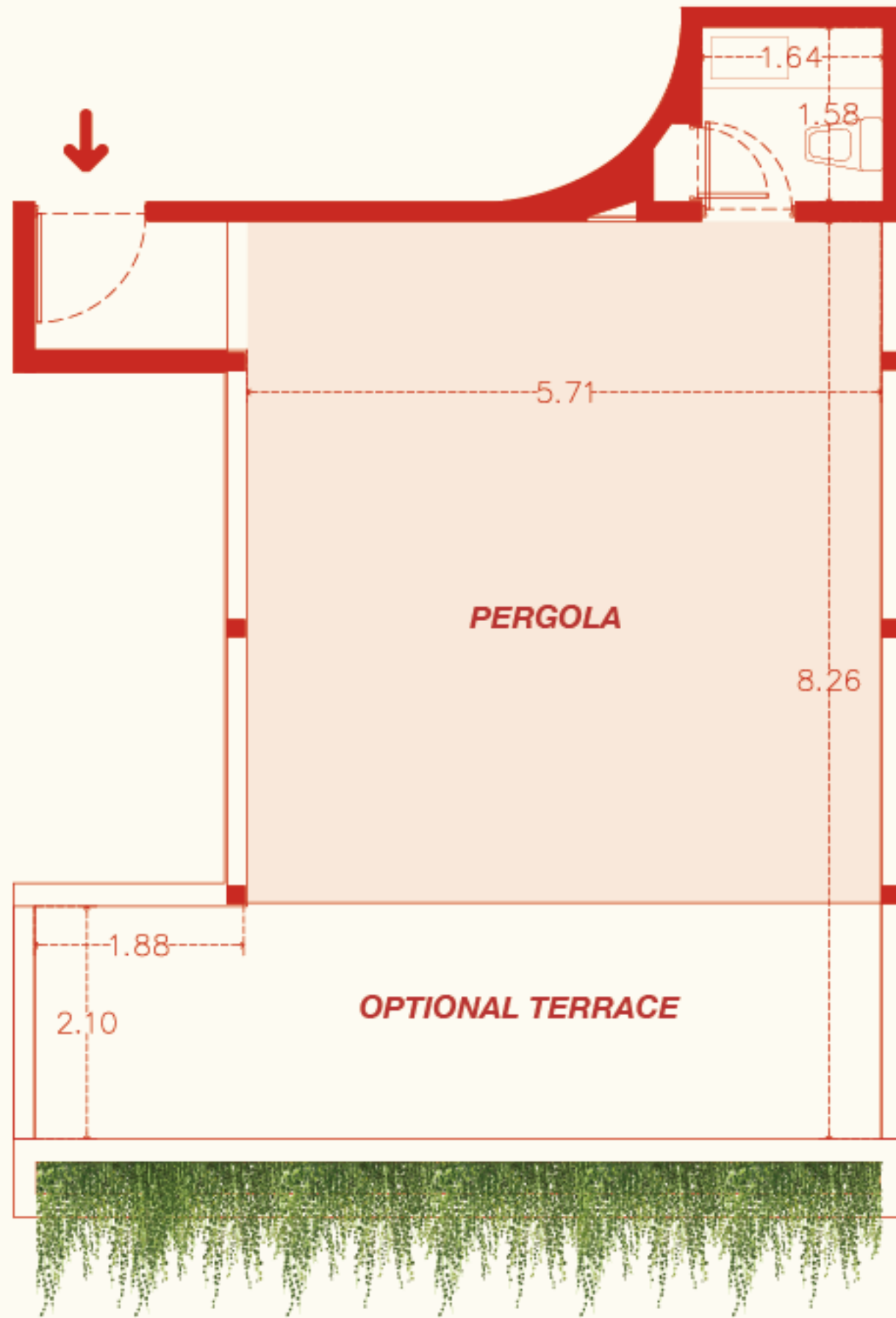
SCHEMATIC SECTION



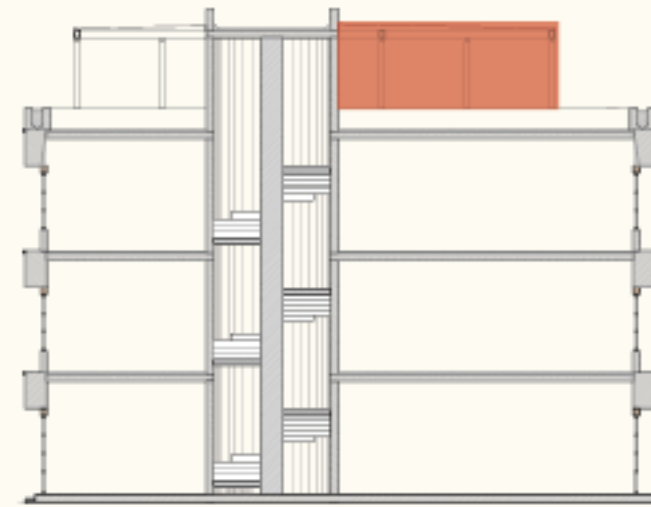
TYOLOGIES

No.401

736 qsft²



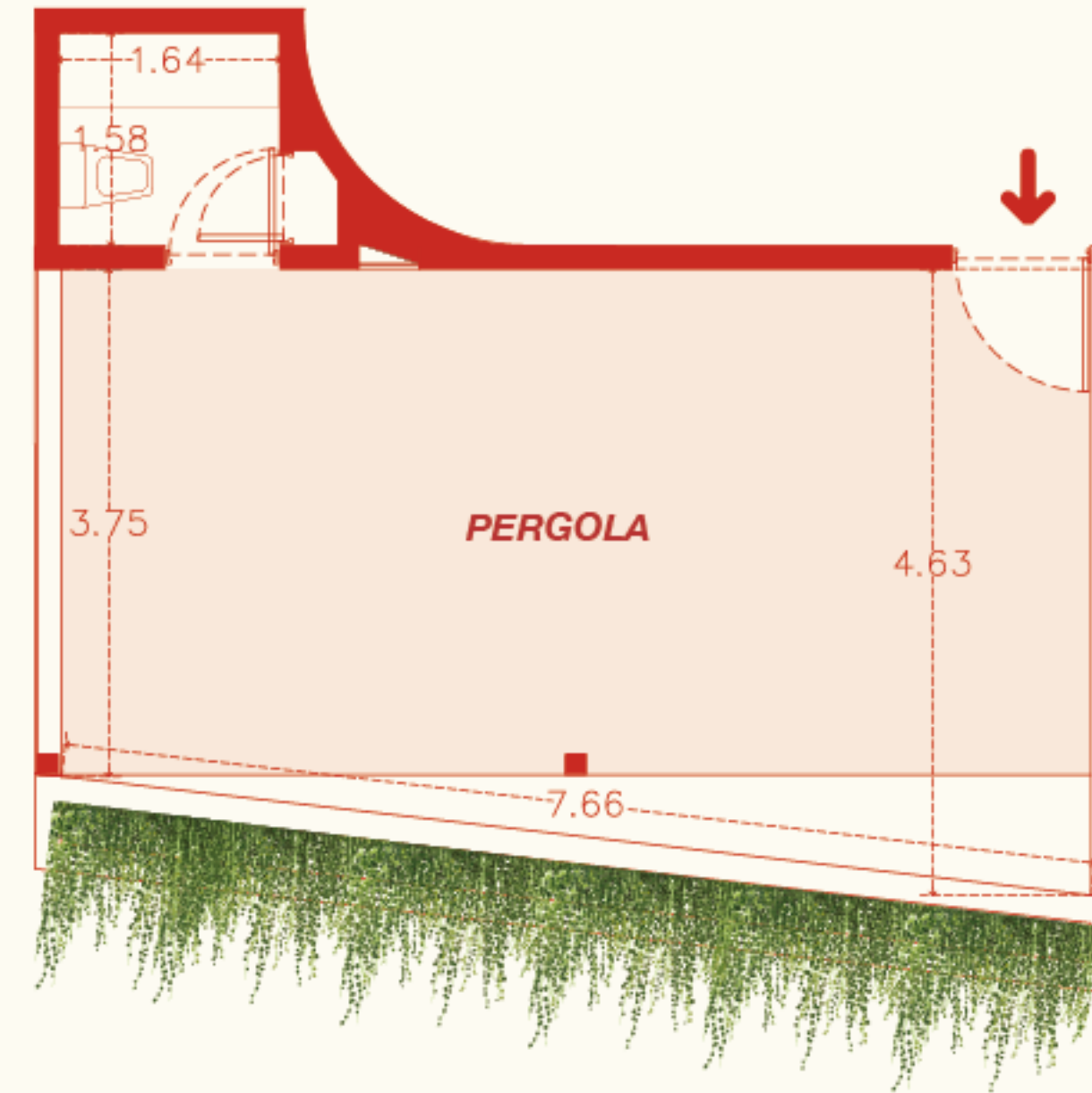
Main avenue front



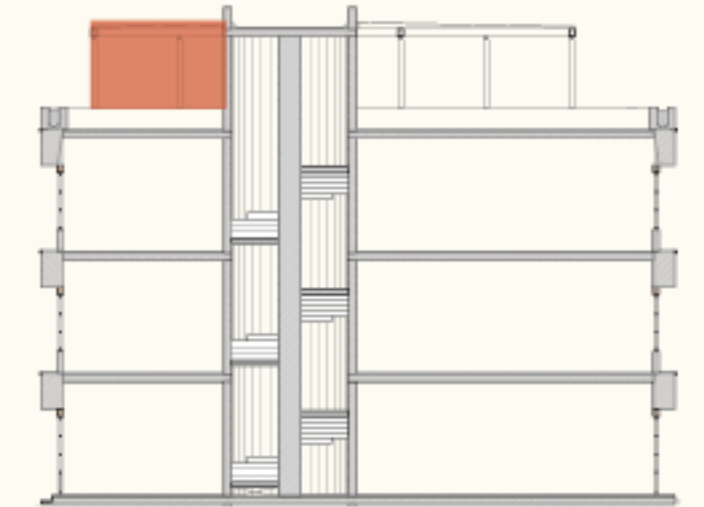
SCHEMATIC SECTION

No.402

478 qsft²



Front pedestrian Street



SCHEMATIC SECTION



ANEMONA

HUACHINANGO
CAPITAL