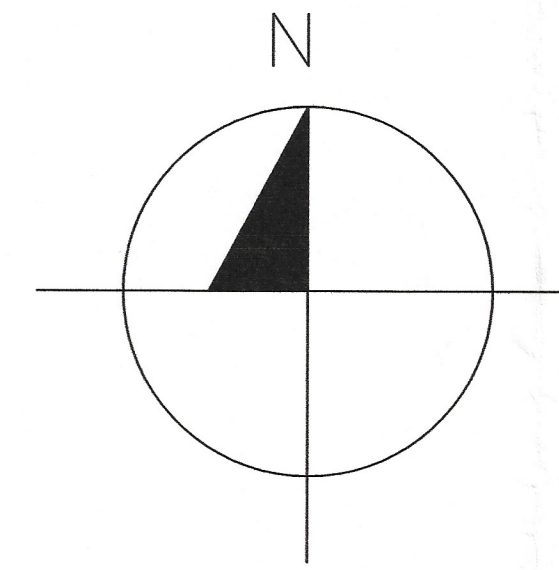
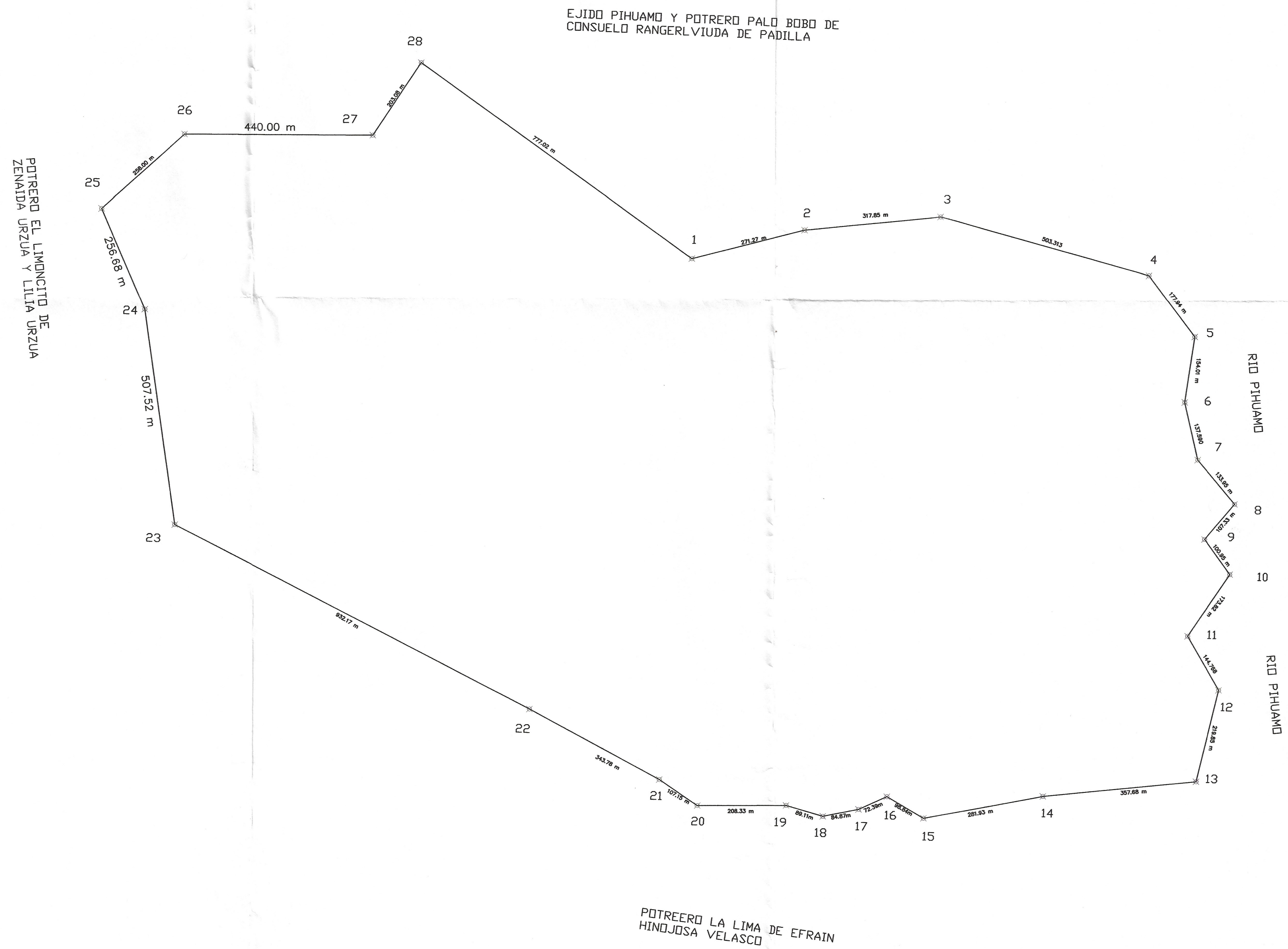


PREDIO RUSTICO DENOMINADO "LA ENRRAMADA"



SUPERFICIE = 304-86-05.07 ha.

PERIMETRO = 7,461.27 m



CUADRO DE CONSTRUCCION					
LADO EST-PV	AZIMUT	DISTANCIA (MTS.)	COORDENADAS UTM NORTE (Y) ESTE (X)		LONGITUD
1-2	75°49'7.15"	271.270	668,806.620	2,125,004.284	19°12'41.271528" N 103°23'39.340933" W
2-3	84°18'1.17"	317.854	669,069.623	2,125,070.743	19°12'43.353948" N 103°23'30.316192" W
3-4	105°39'46.95"	503.313	669,385.906	2,125,102.310	19°12'44.285460" N 103°23'19.478455" W
4-5	143°5'53.06"	177.941	669,870.529	2,124,966.426	19°12'39.720151" N 103°23'2.930907" W
5-6	188°32'13.67"	154.019	669,977.373	2,124,824.133	19°12'35.060253" N 103°22'59.318453" W
6-7	167°3'52.33"	137.590	669,954.509	2,124,671.821	19°12'30.113671" N 103°23'0.149596" W
7-8	140°3'37.31"	133.957	669,985.309	2,124,537.723	19°12'25.743237" N 103°22'59.137840" W
8-9	220°20'31.75"	107.335	670,071.306	2,124,435.015	19°12'22.377014" N 103°22'56.226535" W
9-10	144°11'12.56"	100.950	670,001.823	2,124,353.206	19°12'19.737397" N 103°22'58.631161" W
10-11	214°12'8.42"	173.829	670,060.894	2,124,271.342	19°12'17.057192" N 103°22'56.635042" W
11-12	150°0'38.92"	144.768	669,963.181	2,124,127.575	19°12'12.411124" N 103°23'0.025695" W
12-13	193°44'10.63"	219.854	670,035.541	2,124,002.189	19°12'8.311476" N 103°22'57.588494" W
13-14	264°14'42.87"	357.682	669,983.336	2,123,788.623	19°12'1.381675" N 103°22'59.443454" W
14-15	259°18'59.17"	281.930	669,627.457	2,123,752.758	19°12'0.322600" N 103°23'11.637222" W
15-16	300°24'28.01"	98.847	669,350.414	2,123,700.493	19°11'58.706214" N 103°23'21.137448" W
16-17	245°9'9.59"	72.392	669,265.164	2,123,750.524	19°12'0.358975" N 103°23'24.039878" W
17-18	258°45'52.89"	84.870	669,199.474	2,123,720.105	19°11'59.389425" N 103°23'26.298209" W
18-19	286°18'34.58"	89.112	669,116.230	2,123,703.569	19°11'58.876650" N 103°23'29.153008" W
19-20	269°45'32.58"	208.330	669,030.705	2,123,728.594	19°11'59.716196" N 103°23'32.072795" W
20-21	304°23'17.67"	107.153	668,822.376	2,123,727.718	19°11'59.750205" N 103°23'39.204544" W
21-22	298°23'11.74"	343.786	668,733.951	2,123,788.238	19°12'1.744935" N 103°23'42.212427" W
22-23	297°22'40.35"	932.171	668,431.502	2,123,951.680	19°12'7.150982" N 103°23'52.514402" W
23-24	351°55'28.93"	507.523	667,603.741	2,124,380.345	19°12'21.339185" N 103°24'20.716346" W
24-25	336°51'6.48"	256.683	667,532.447	2,124,882.835	19°12'37.702536" N 103°24'22.999522" W
25-26	48°8'19.85"	258.002	667,431.542	2,125,118.853	19°12'45.408415" N 103°24'26.380007" W
26-27	90°17'10.53"	440.005	667,623.693	2,125,291.025	19°12'50.950617" N 103°24'19.747793" W
27-28	33°32'16.76"	203.080	668,063.692	2,125,288.827	19°12'50.747858" N 103°24'4.685105" W
28-1	125°44'7.24"	777.023	668,175.892	2,125,458.098	19°12'56.219408" N 103°24'0.790684" W

AREA = 3,048,605.07 m2 PERIMETRO = 7,461.267 m

DESCRIPCIÓN

UBICACIÓN
MUNICIPIO:
PIHUAMO, JAL.

ELABORÓ:
ING. JUAN CARLOS VERÓNICA ARREOLA
CEDULA PROFESIONAL
Nº 6137620

FIRMA

ING. JUAN CARLOS VERÓNICA ARREOLA

UTM
13 North
NAD 1927 (México)
GPS MOBILE MAPPER

FECHA	MAYO 2010	Nº DE HOJA	UNICA
ESCALA	S/E		