

# NANGU

APARTMENTS

MARCH 4, 2024  
**APARTMENT 101**  
 \$156 500.00 per unit

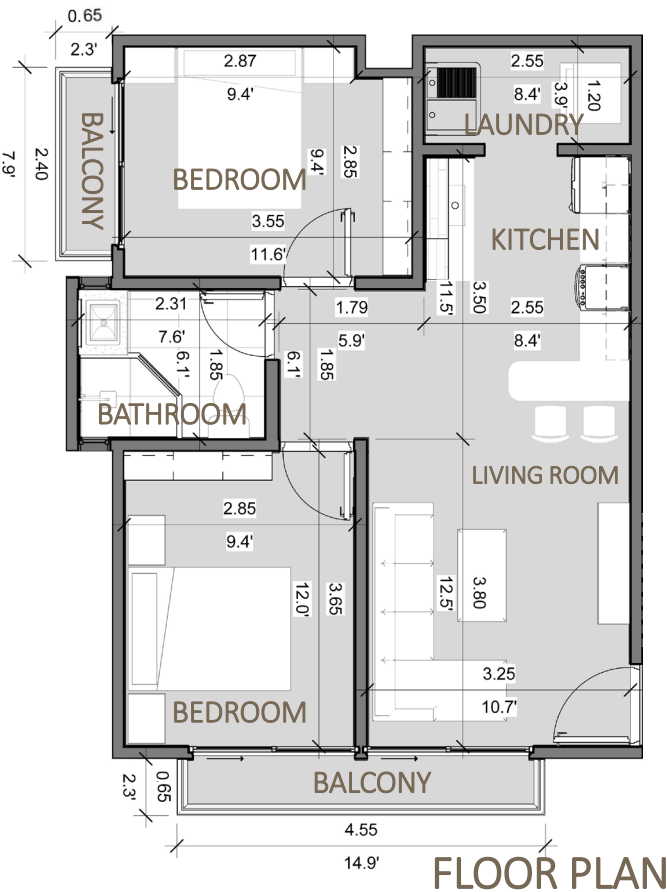
60 m<sup>2</sup>  
**646 ft<sup>2</sup>** LIVING AREA

15 m<sup>2</sup>  
**162 ft<sup>2</sup>** PARKING AREA

4,4 m<sup>2</sup>  
**52 ft<sup>2</sup>** BALCONIES AREA



SPACE	m <sup>2</sup>	ft <sup>2</sup>
LIVING ROOM	13.18 m <sup>2</sup>	141.9 ft <sup>2</sup>
KITCHEN	10.13 m <sup>2</sup>	109.0 ft <sup>2</sup>
LAUNDRY	3.95 m <sup>2</sup>	42.5 ft <sup>2</sup>
CIRCULATION	3.68 m <sup>2</sup>	39.6 ft <sup>2</sup>
PRINCIPAL BEDROOM	12.21 m <sup>2</sup>	131.4 ft <sup>2</sup>
SECOND BEDROOM	11.61 m <sup>2</sup>	124.9 ft <sup>2</sup>
BATHROOM	5.13 m <sup>2</sup>	55.2 ft <sup>2</sup>
<b>TOTAL INTERNAL AREA</b>	<b>60.00 m<sup>2</sup></b>	<b>645.8 ft<sup>2</sup></b>
<b>BALCONIES</b>	<b>4.4 m<sup>2</sup></b>	<b>52.0 ft<sup>2</sup></b>



**VERTICAL LOCATION**

BUYERS PAYMENTS	Advance payment	MONTH 1	MONTH 2	MONTH 3	MONTH 4	MONTH 5
Contract signing (20%)	\$31 300,00					
Foundations / infrastructure (15%)		\$23 475,00				
Walls and roof (20%)			\$31 300,00			
Electromechanical systems (15%)				\$23 475,00		
Finishes, windows, doors (25%)					\$39 125,00	
Final delivery (5%)						\$7 825,00

**PAYMENT SCHEDULE**