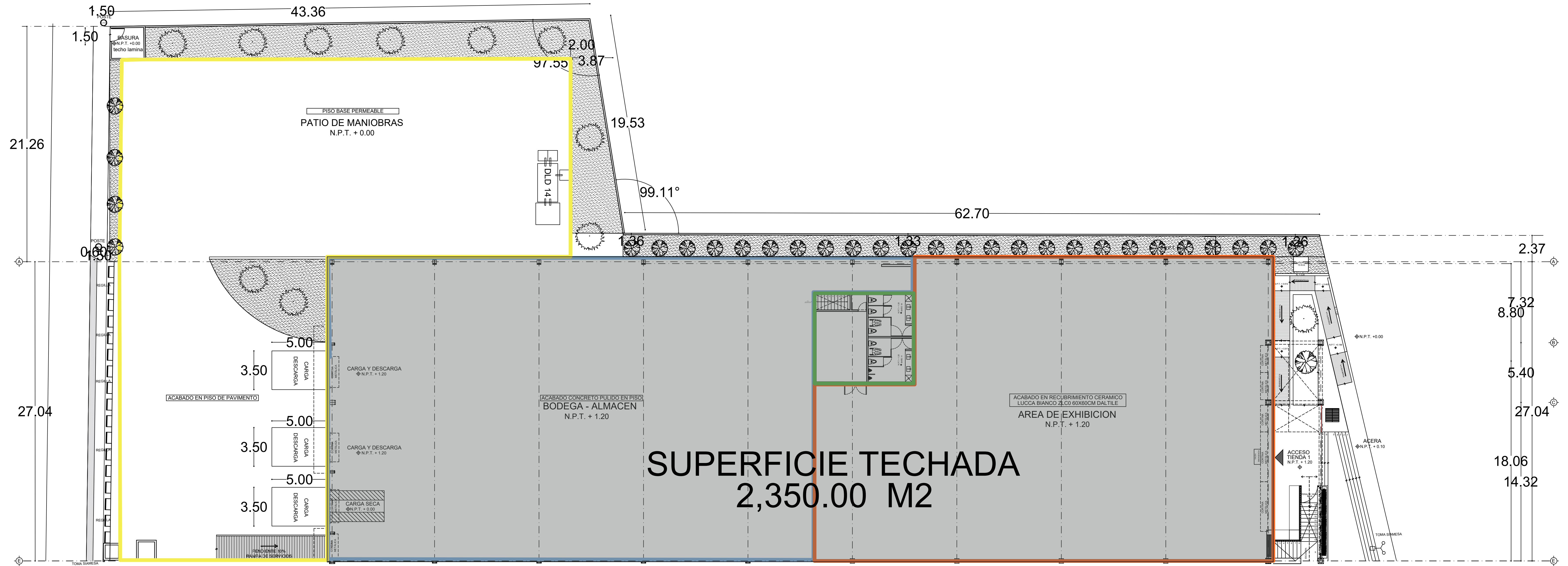
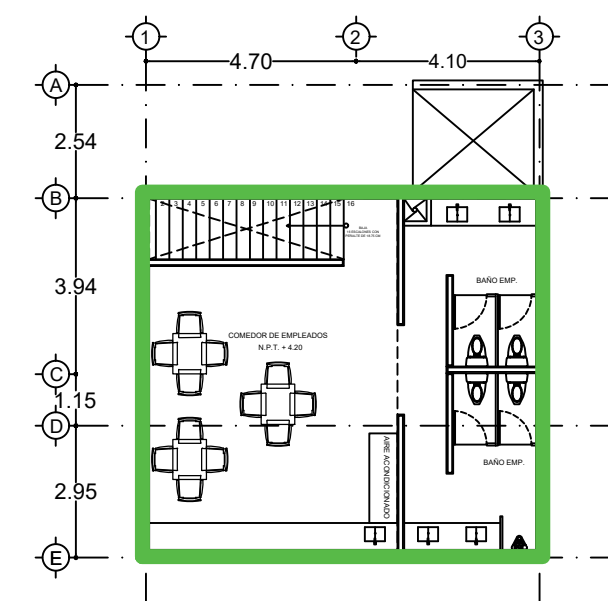


# BODEGAS PERINORTE

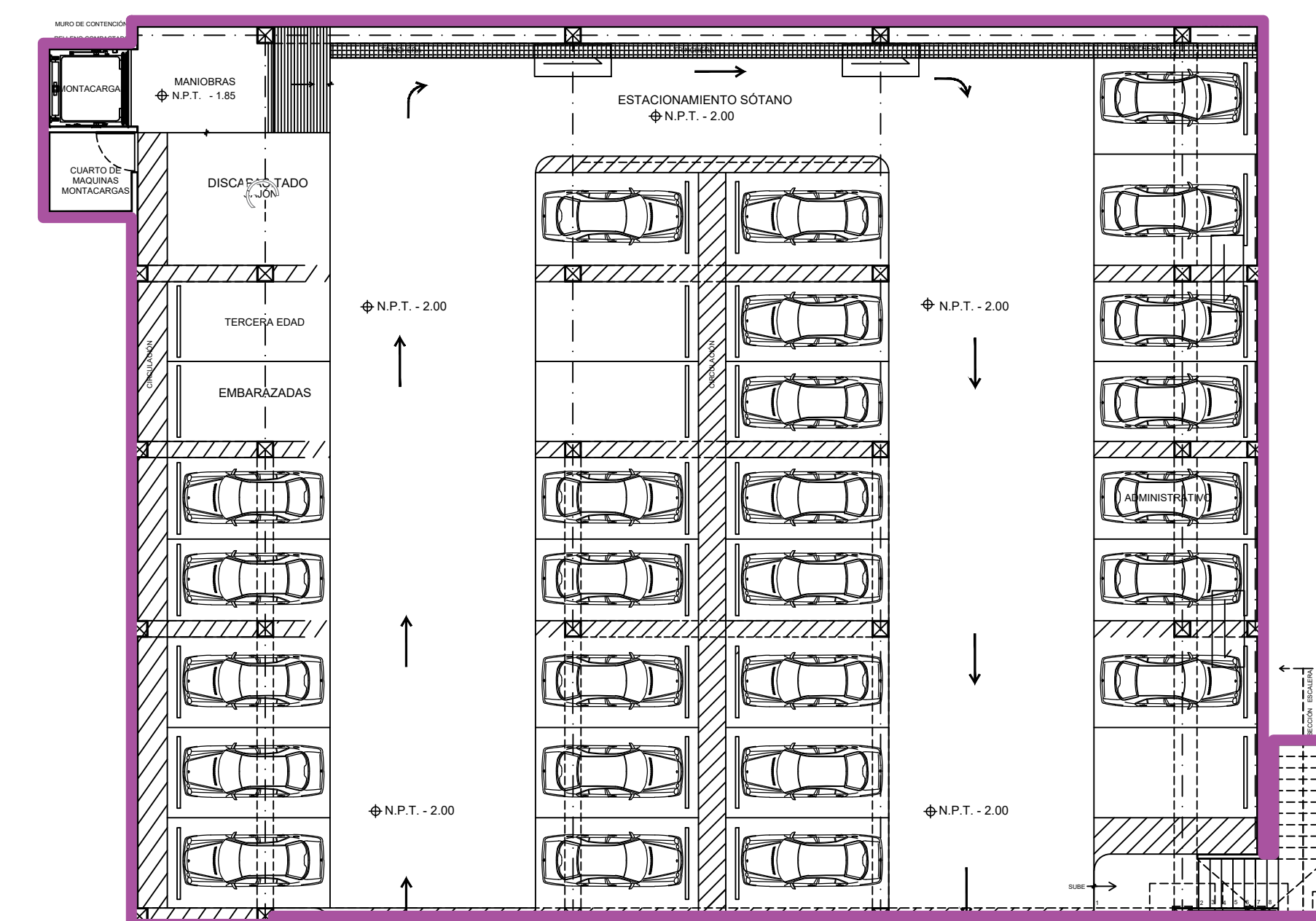


PLANTA BAJA

AREAS	CANTIDAD	UNIDAD
<b>SOTANO</b>		
ESTACIONAMIENTO	981.00	M2
<b>PLANTA BAJA (3,588.50 M2)</b>		
OFICINA	72.90	M2
EXHIBICION	1038.30	M2
BODEGA -ALMACEN	1237.80	M2
PATIO DE MANIOBRAS	1239.50	M2
<b>PLANTA ALTA</b>		
OFICINA	72.90	M2
<b>TOTAL</b>	<b>4642.40</b>	<b>M2</b>



PLANTA ALTA



SOTANO