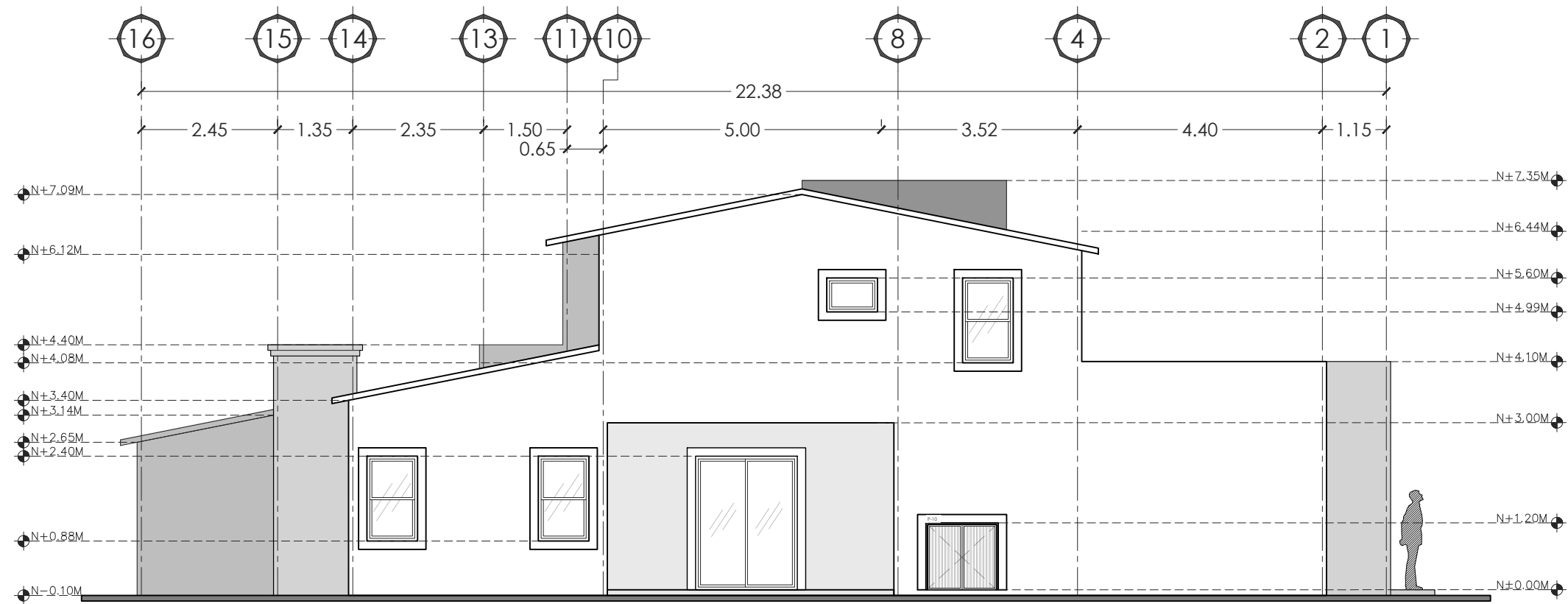
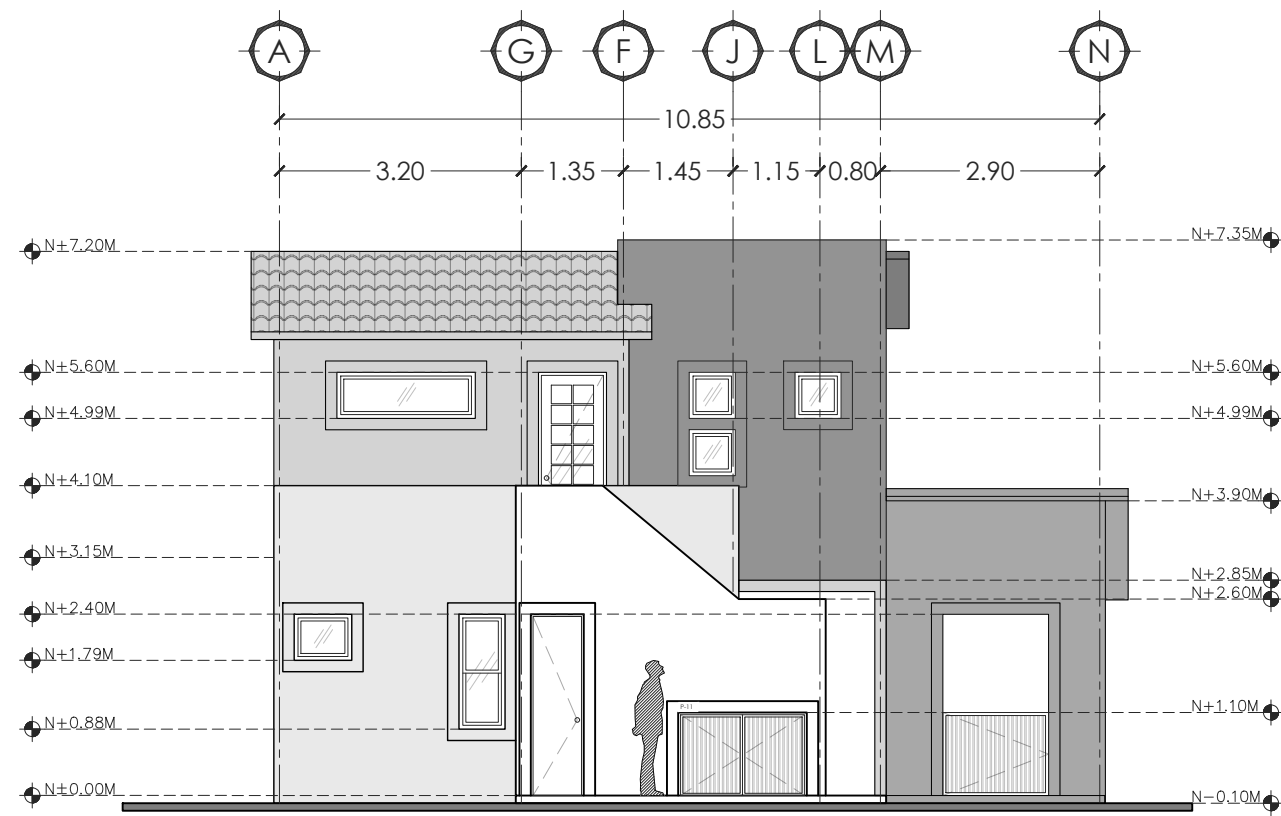


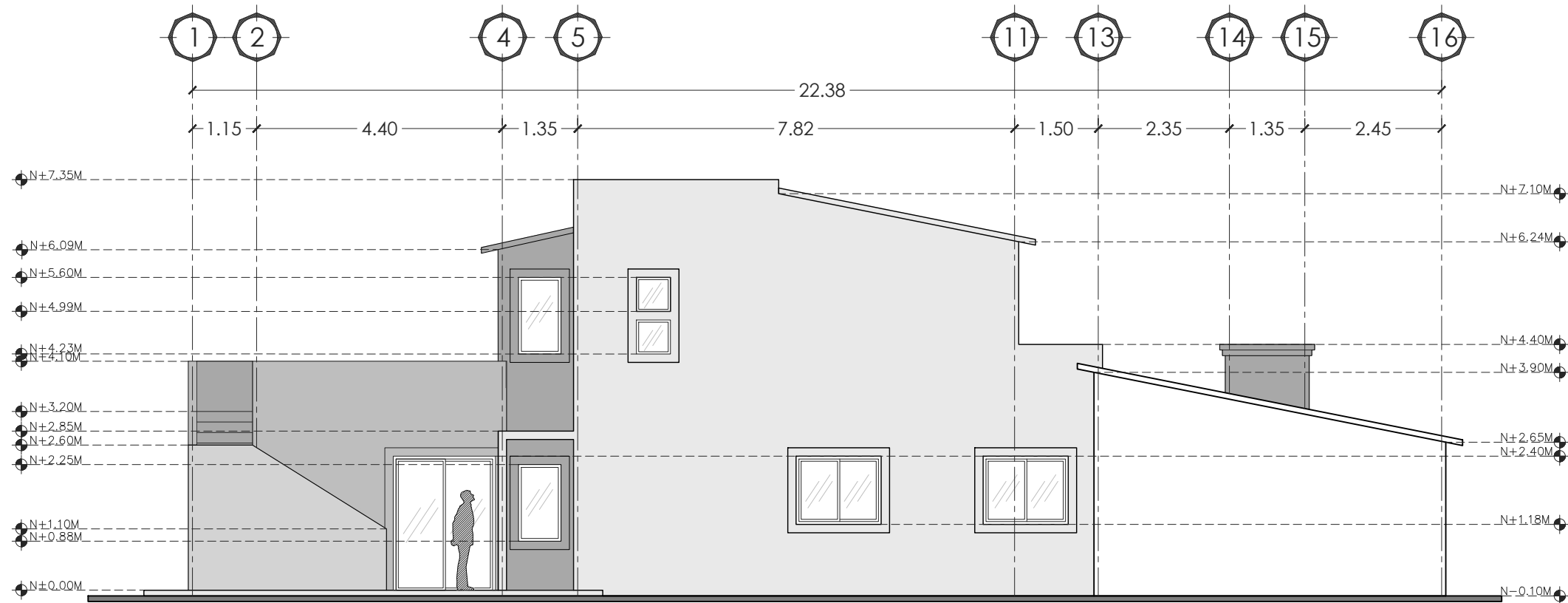
FACHADA PRINCIPAL



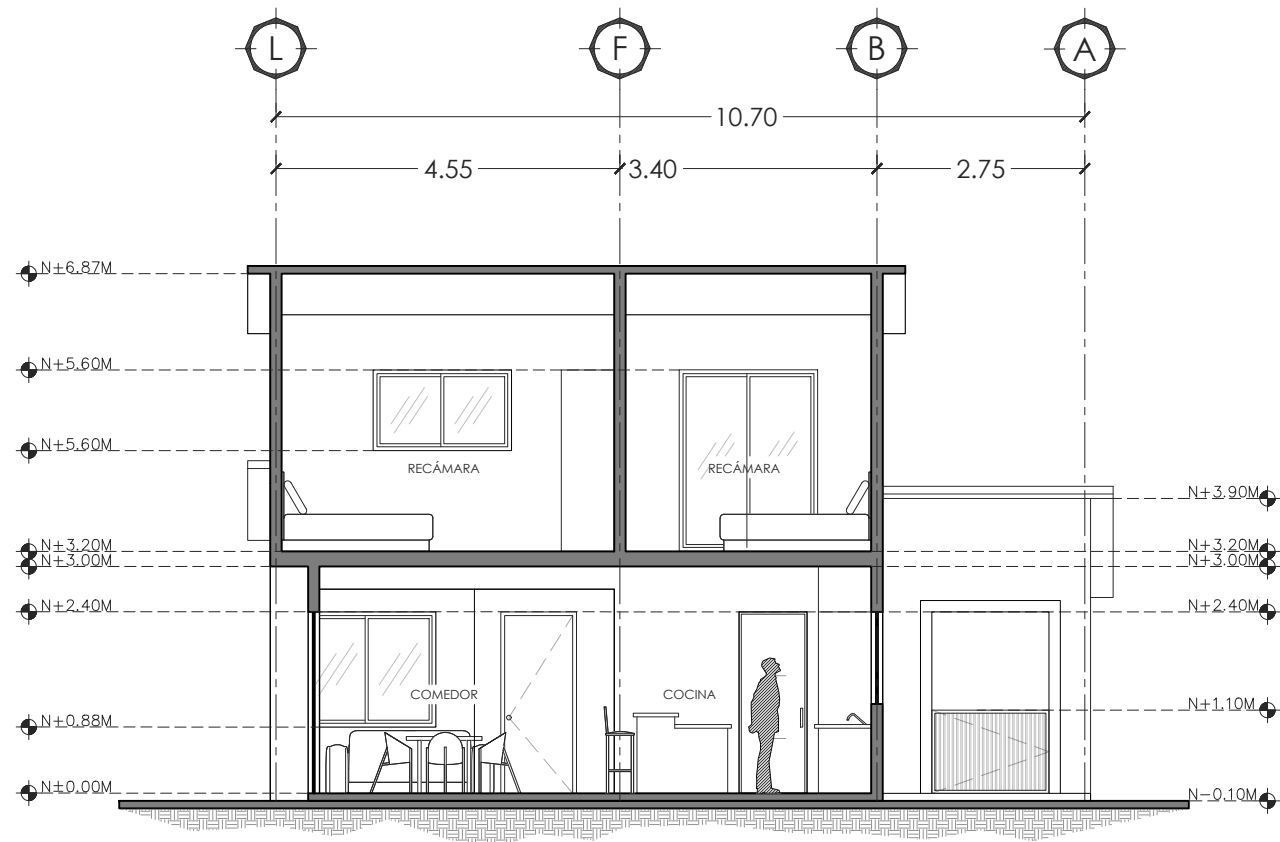
FACHADA LATERAL DERECHA



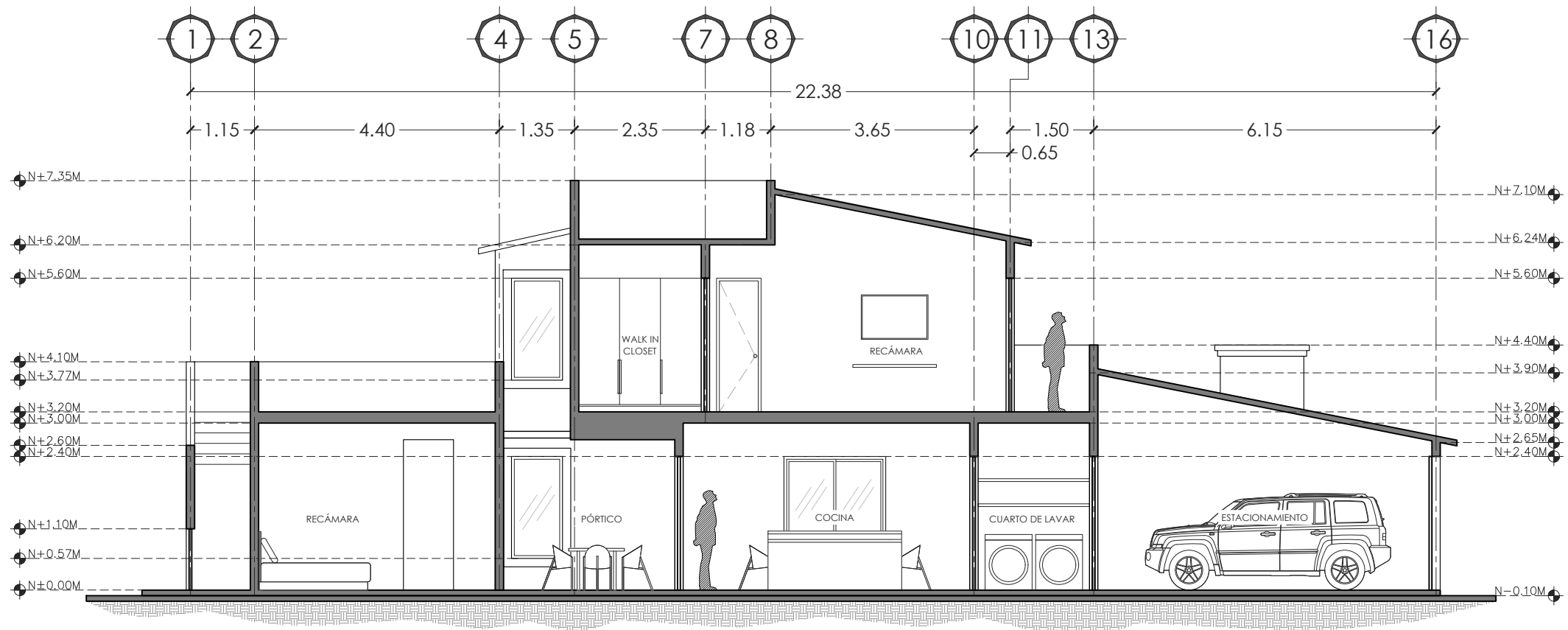
FACHADA POSTERIOR



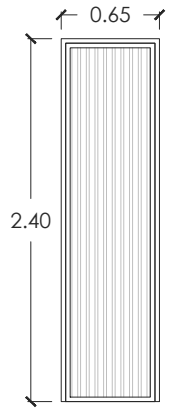
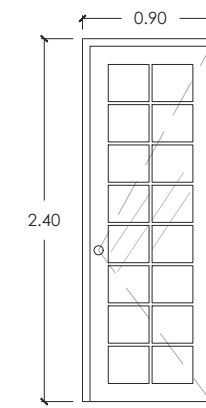
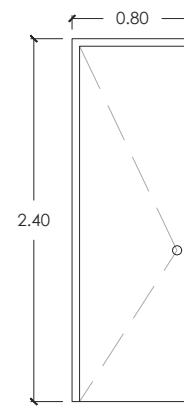
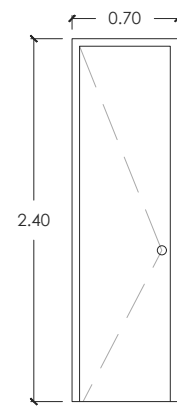
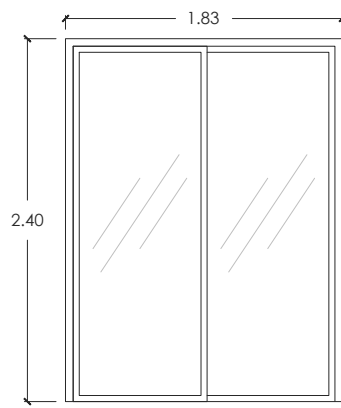
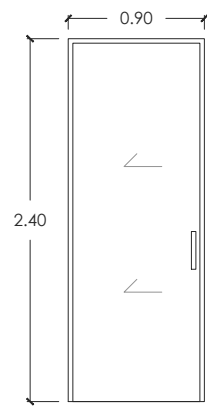
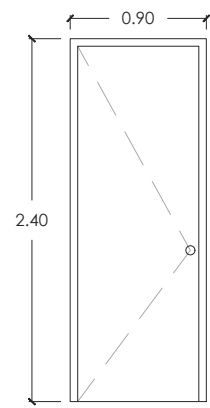
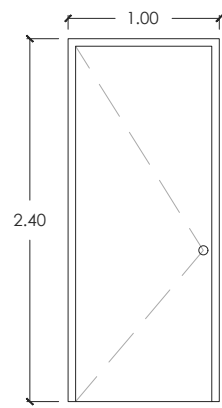
FACHADA LATERAL IZQUIERDA



CORTE TRANSVERSAL B-B'



CORTE LONGITUDINAL A-A'



PUERTA P-01

PUERTA P-02

PUERTA P-03

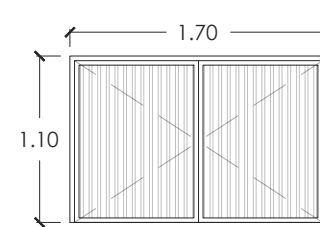
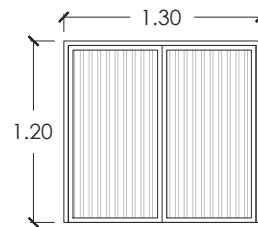
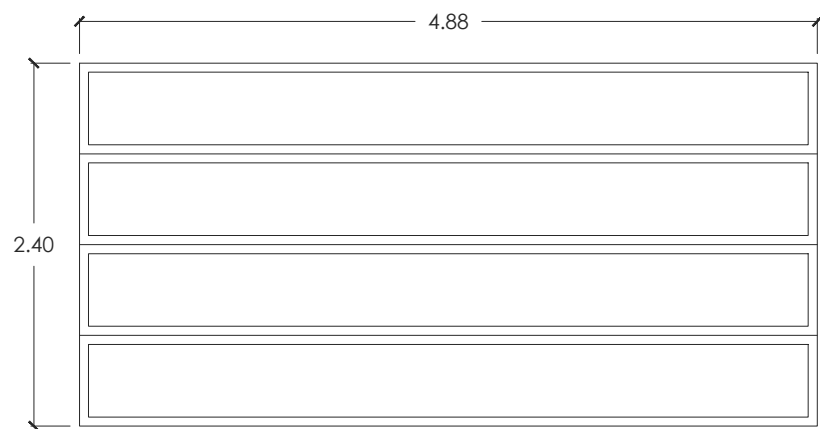
PUERTA P-04

PUERTA P-05

PUERTA P-06

PUERTA P-07

PUERTA P-09



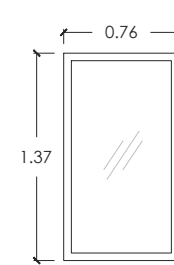
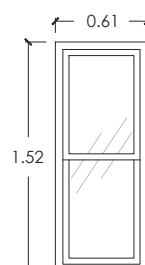
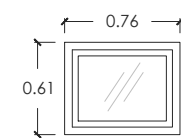
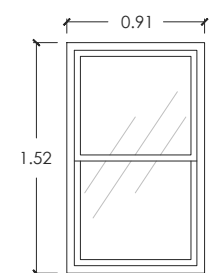
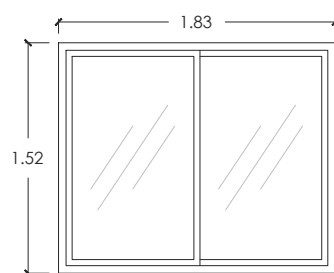
PUERTA P-08

PUERTA P-10

PUERTA P-11

CUADRO DE PUERTAS				
No.	Dimensiones		Tipo	Piezas
	Ancho	Alto		
P-01	1.00	2.40	PUERTA ABATIBLE A BASE DE MADERA EN ACCESO PRICIPAL	1
P-02	0.90	2.40	PUERTA ABATIBLE A BASE DE MADERA EN RECÁMARA Y CUARTO DE LAVAR	2
P-03	0.90	2.40	PUERTA CORREDIZA A BASE DE MADERA EN CUARTO DE LAVAR	1
P-04	1.83	2.40	PUERTA CORREDIZA A BASE DE VIDRIO EN INTERIORES CON CONEXIÓN A EXTERIORES	4
P-05	0.70	2.40	PUERTA ABATIBLE A BASE DE MADERA EN BAÑOS Y WALK IN CLOSET	3
P-06	0.80	2.40	PUERTA ABATIBLE A BASE DE MADERA EN RECÁMARA Y BAÑO	5
P-07	0.90	2.40	PUERTA ABATIBLE A BASE DE VIDRIO EN TERRAZA	1
P-08	4.88	2.40	PUERTA ELECTRICA EN ESTACIONAMIENTO	1
P-09	0.65	2.40	PUERTA ABATIBLE A BASE DE MADERA EN ÁREAS DE SERVICIO	1
P-10	1.30	1.20	PUERTA ABATIBLE A BASE DE MADERA EN ÁREAS DE SERVICIO	1
P-11	1.70	1.10	PUERTA ABATIBLE A BASE DE MADERA EN ÁREAS DE SERVICIO	2

CUADRO DE ILUMINACION Y VENTILACION							
No.	Dimensiones		Tipo	Piezas	Iluminacion	Ventilacion	
	Ancho	Alto					
V-01	1.83	1.52	X-O	VENTANA CORREDIZA A BASE DE DOBLE VIDRIO, ESTRUCTURA DE PVC	1	100%	50%
V-02	0.91	1.52	X-O	VENTANA GUILLOTINA A BASE DE DOBLE VIDRIO, ESTRUCTURA DE PVC	3	100%	50%
V-03	0.76	0.61	X-O	VENTANA DE PROYECCIÓN A BASE DE DOBLE VIDRIO, ESTRUCTURA DE PVC	1	100%	50%
V-04	0.61	1.52	X-O	VENTANA GUILLOTINA A BASE DE DOBLE VIDRIO, ESTRUCTURA DE PVC	1	100%	50%
V-05	0.76	1.37	O	VENTANA FIJA A BASE DE DOBLE VIDRIO, ESTRUCTURA DE PVC	2	100%	0%
V-06	1.52	1.22	X-O	VENTANA CORREDIZA A BASE DE DOBLE VIDRIO, ESTRUCTURA DE PVC	2	100%	50%
V-07	1.83	1.07	X-O	VENTANA CORREDIZA A BASE DE DOBLE VIDRIO, ESTRUCTURA DE ALUMINIO	1	100%	50%
V-08	0.91	0.61	X-O	VENTANA DE PROYECCIÓN A BASE DE DOBLE VIDRIO, ESTRUCTURA DE PVC	1	100%	100%
V-09	1.83	0.61	X-O	VENTANA DE PROYECCIÓN A BASE DE DOBLE VIDRIO, ESTRUCTURA DE ALUMINIO	1	100%	100%
V-10	0.61	0.61	X-O	VENTANA DE PROYECCIÓN A BASE DE DOBLE VIDRIO, ESTRUCTURA DE ALUMINIO	3	100%	100%
V-11	0.50	0.50	O	VENTANA DE FIJA A BASE DE DOBLE VIDRIO, ESTRUCTURA DE ALUMINIO	1	100%	0%



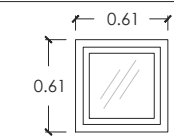
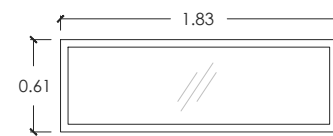
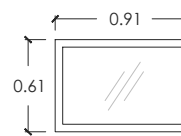
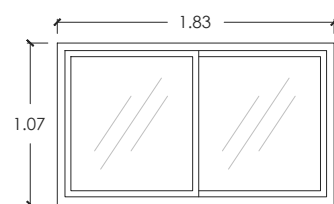
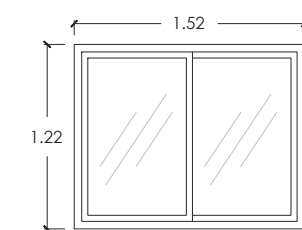
VENTANA V-01

VENTANA V-02

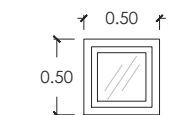
VENTANA V-03

VENTANA V-04

VENTANA V-05



VENTANA V-10



VENTANA V-06

VENTANA V-07

VENTANA V-08

VENTANA V-09

VENTANA V-11