

## TERRENO EN VENTA

La Espiga  
C. Alcalá II  
Lote 51

COMO INVERSIÓN | PARA VIVIR

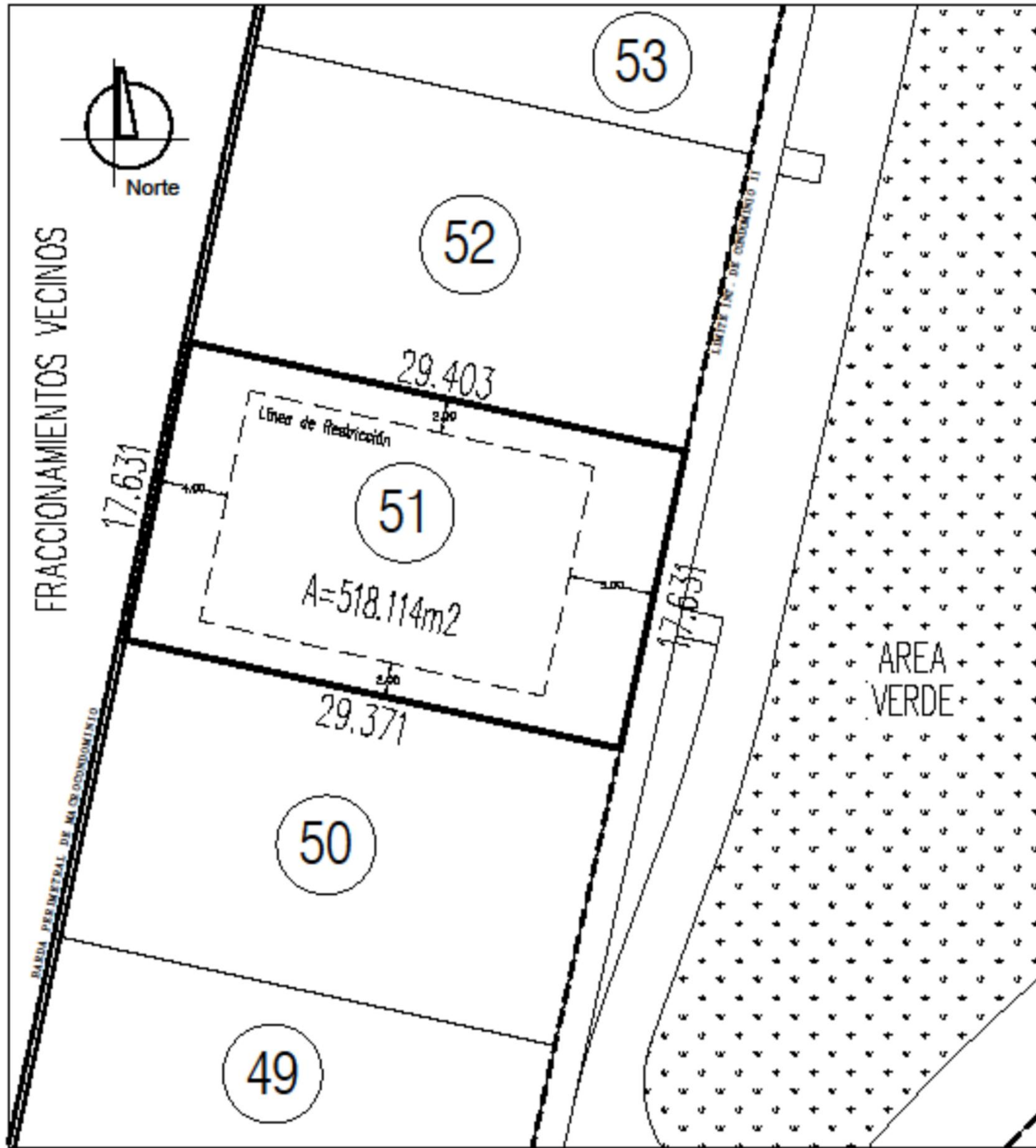
**LA ESPIGA<sup>®</sup>**  
VIDA Y COMUNIDAD

**ALCALÁ I-II**

ACCESO

- CASETA DE ACCESO
- PÉRGOLA
- ARENERO
- ESTACIONAMIENTO
- PARQUE CANINO
- BANCA ROTONDA
- LAGO

Detailed description: This is a site plan for the 'La Espiga' residential development, specifically the 'Alcalá I-II' phase. The map shows a winding road layout with numerous lots numbered from II-66 to I-32. Lot 51 is highlighted with an orange circle and an orange arrow pointing to it from the left. The plan includes various amenities: a lake at the bottom right, a dog park, a playground, and several parking areas marked with 'E'. There are also roundabouts and pergolas indicated. A legend on the right side explains the symbols used for these features. The overall layout is semi-circular, with the lake and dog park at the bottom and the entrance road at the top right.



# La Espiga

## C. Alcalá II

### Lote 51

**SUPERFICIE:** 518.11 m<sup>2</sup>

**PRECIO M<sup>2</sup>:** \$6,200.00 x m<sup>2</sup>

**PRECIO:** \$3,212,306.80


**13T51**

# ACTIVO<sup>®</sup>

INMOBILIARIO

¡VEN Y VISÍTANOS!

Síguenos en:

 activo-inmobiliario

Consulta todo nuestro catálogo de propiedades en:

[www.activoinmobiliario.mx](http://www.activoinmobiliario.mx)

Querétaro, Qro.