



KUKULCÁN

An aerial photograph of a tropical beach. The top left corner shows a sandy beach with several palm trees and some white lounge chairs. The rest of the image is dominated by clear, turquoise water. On the right side, there is a large, faint, light blue graphic of a stylized sun or starburst.

El mar y el Viento

TOCAN SU PROPIA MÚSICA

The sea and the wind

THEY PLAY THEIR OWN MUSIC



Conoce uno de los tesoros mexicanos, escondido en las costas del Mar Caribe

Tulum, México

Discover a Mexican treasure, hidden on the coasts of the Caribbean Sea.

Un destino con amaneceres únicos

Tulum, Riviera Maya

A destination with unique sunrises





KUKULCÁN

Gracias a que cada año millones de personas mexicanas y extranjeras acuden a este místico lugar, incrementa la oportunidad de crecimiento de Tulum.

Since each year millions of Mexicans and foreigners visit this mystical place, the opportunity for growth in Tulum is increasing.







KUKULCÁN

También conocido como Serpiente Emplumada, es un Dios Maya relacionado con el viento y el agua, se dice que con su cola agita el viento el cual limpia la tierra para que las aguas corran limpias.

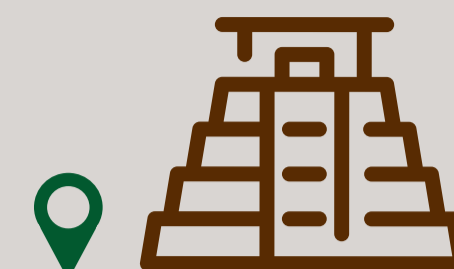
Known as Feathered Serpent, is a Mayan God related to wind and water, it is said that with its tail it waves the wind which cleans the land so the waters can run clean.



LA VELETA

REGIÓN 15

ALDEA ZAMÁ



TULUM ZONA ARQUEOLÓGICA

AV. COBA SUR

AV. KUKULKAN

PLAYA PESCADORES

PLAYA PARAÍSO

PAPAYA PLAYA PROJECT

ZONA HOTELERA



AZULIK


 KUKULCÁN

REGIÓN 8
MZA 704

Kukulcán es un desarrollo ubicado en la región 8 sobre la manzana 704, a una calle de la **Av. Kukulcán** y a unos minutos de las mejores playas del mundo.

Kukulcan is a development located in region 8 on block 704, just one street away from Kukulcan Avenue and a few minutes away from the world's best beaches.

MAR CARIBE

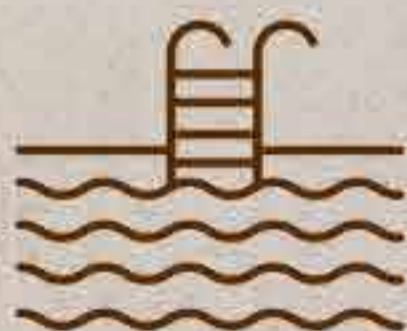
A modern residential building courtyard at night. The scene is illuminated by warm, ambient lighting. In the foreground, four wooden lounge chairs with light-colored cushions are arranged on a dark deck, facing a swimming pool. The pool is surrounded by lush tropical landscaping, including several tall palm trees with red flowers and various green plants. The building's facade is visible on both sides, featuring balconies with wooden railings and large windows. The sky is dark, suggesting dusk or night.

Amenidades exclusivas
para un **estilo de vida único**,
aquí encontrarás todo
en un solo lugar.

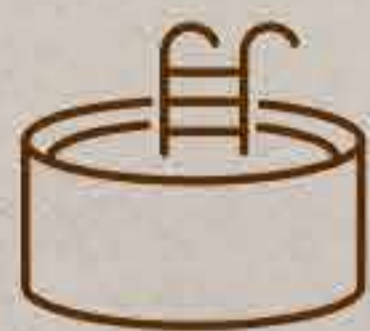
*Exclusive amenities for a
unique lifestyle, here you will
find everything all in one place.*



AMENIDADES AMENITIES



ALBERCA
POOL



JACUZZI
HOT TUB



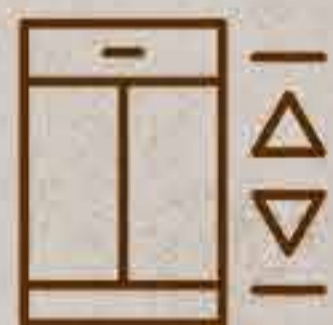
RESTAURANTE
RESTAURANT



ESTACIONAMIENTO
PARKING LOT



FOGATERO
FIREPIT



ELEVADOR
ELEVATOR



TERRAZAS
TERRACE



RECEPCIÓN
RECEPTION



VESTÍBULO
LOBBY



SALA DE PROYECCIONES
SCREENING ROOM



ÁREA DE TRABAJO
COWORKING



GIMNASIOS
GYM



LAVANDERÍA
LAUNDRY



ZONA DE JUEGOS
GAME ZONE



JARDINES
GARDENS





Kukulcán



Failure Is Always A
Great Idea


















KUKULCÁN









A modern bedroom with a bed, wooden furniture, and a large window with a view of palm trees. The room features a wooden headboard, a wooden dresser, and a large window with white curtains. A ceiling fan is visible above the bed. The bed is made with white linens and a colorful patterned blanket. A wooden chair is positioned in front of the bed. A large vase with dried grasses sits on a wooden side table. A framed abstract artwork hangs on the wall above the headboard.

Nuestras unidades se entregan totalmente **amuebladas, equipadas y decoradas**, listas para utilizarse.

Our units are delivered fully furnished, equipped and decorated, ready to be used.



KUKULCÁN



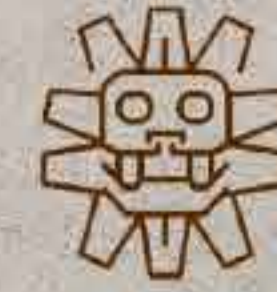
**Torre 1 / Unidad tipo A
(planta baja)**

55 m²

*Tower 1 / Unit type A
(ground floor)*







KUKULCÁN



**Torre 1 / Unidad tipo C
(Nivel 1, 2, 3)**

50.6 m²

*Tower 1 / Unit type C
(Level 1, 2, 3)*







KUKULCÁN



**Torre 1 / Unidad tipo E
(Penthouse)**

81.1 m²

*Tower 1 / Unit type E
(Penthouse)*



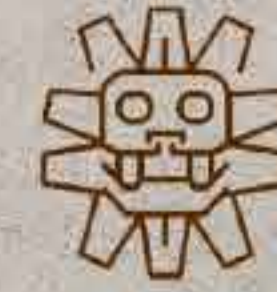












KUKULCÁN



**Torre 2 / Unidad tipo B
(planta baja)**

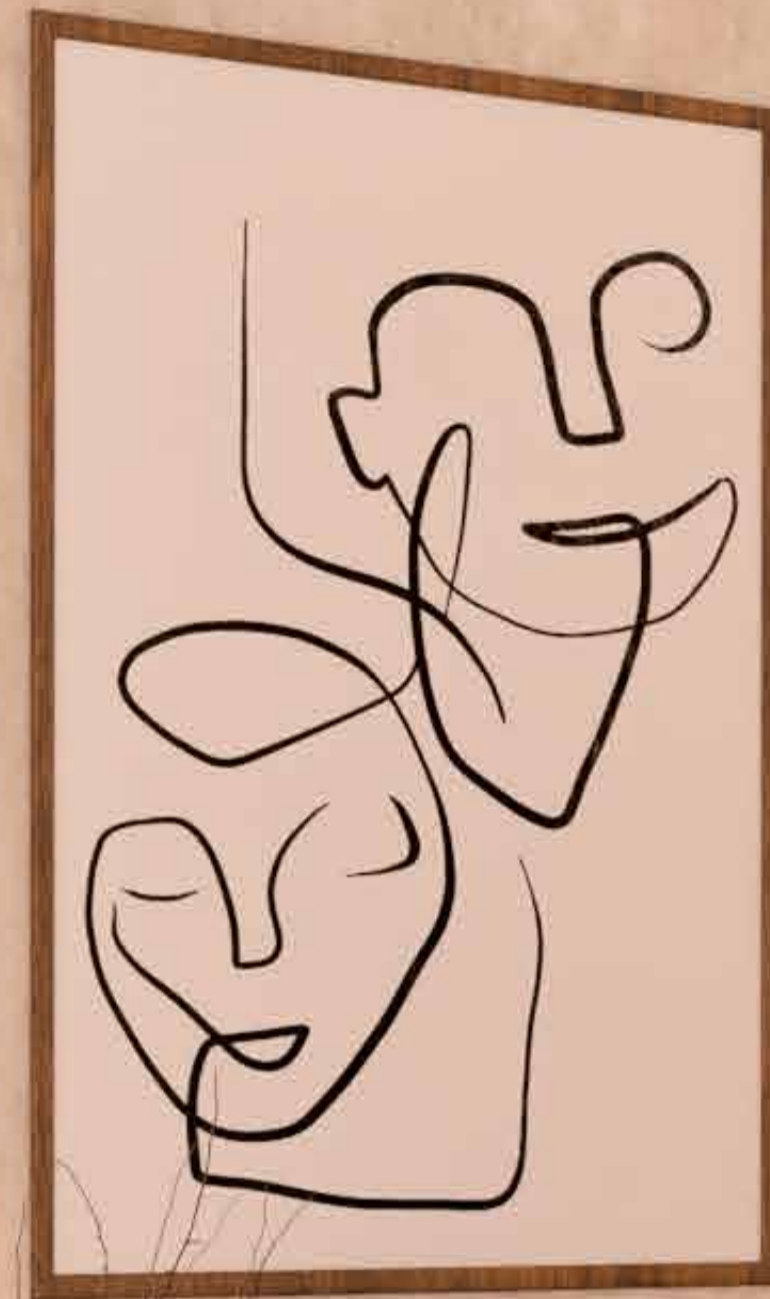
77.1 m²

*Tower 2 / Unit type B
(ground floor)*











KUKULCÁN



Torre 2 / Unidad tipo F
(Nivel 1, 2, 3)

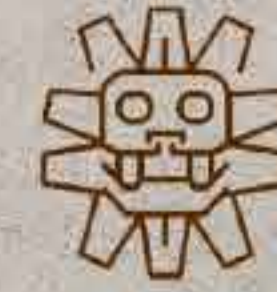
71.3 m²

Tower 2 / Unit type F
(Level 1, 2, 3)

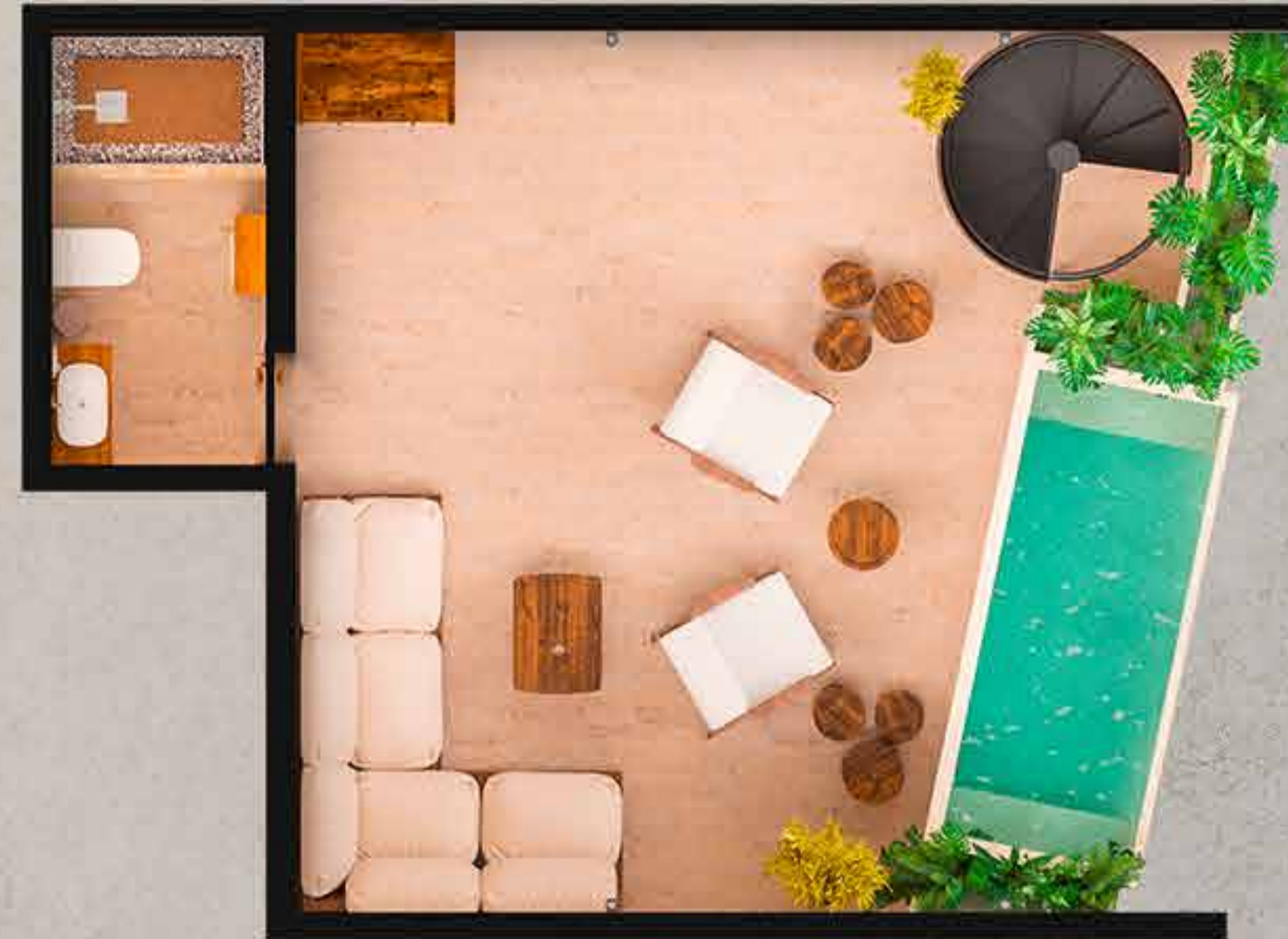








KUKULCÁN



**Torre 2 / Unidad tipo F
(Penthouse)**

107.9 m²

*Tower 2 / Unit type F
(Penthouse)*









KUKULCÁN