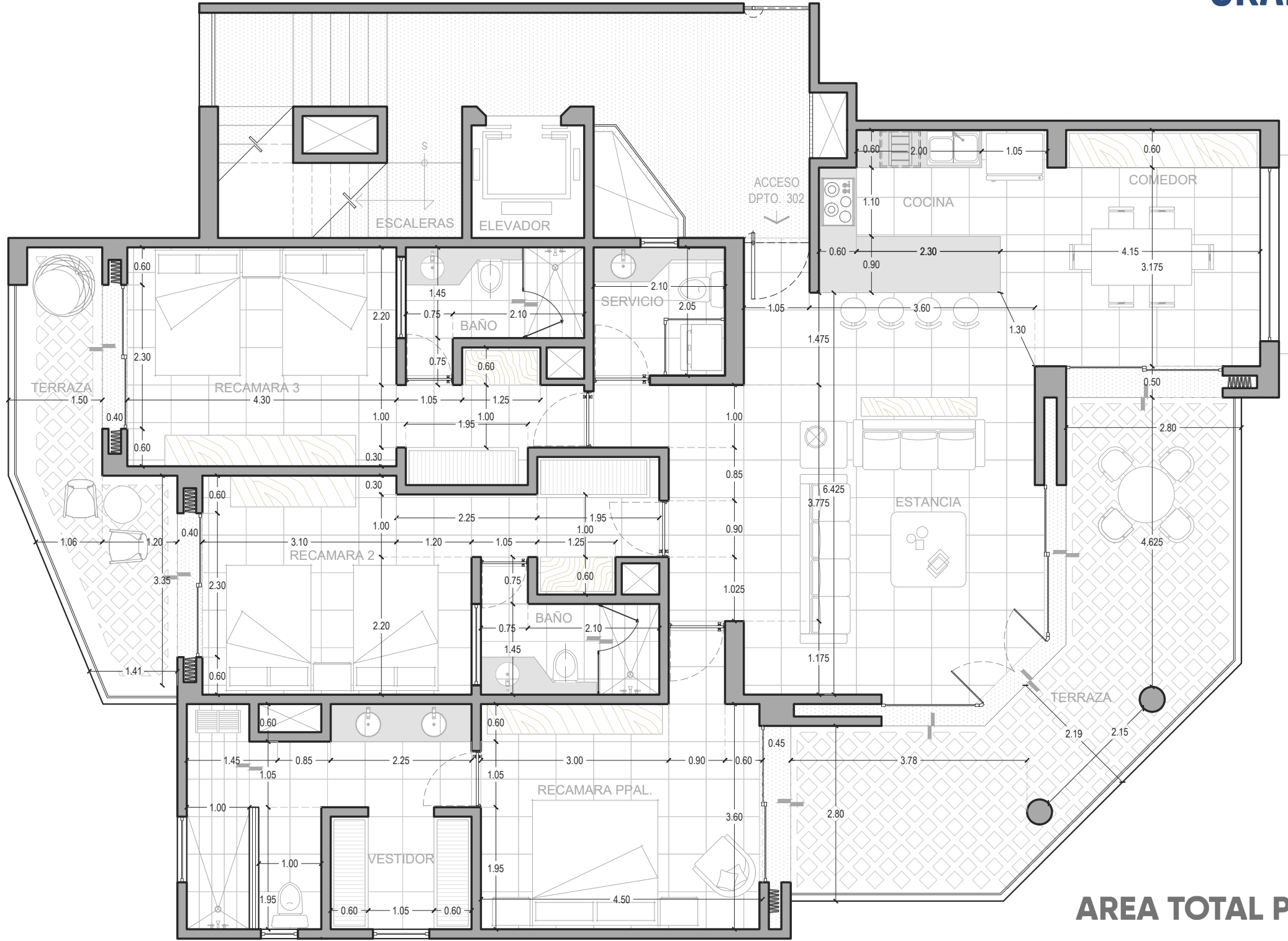


GRAND PENINSULA

EDIFICIO G



AREA TOTAL PRIVATIVA CUBIERTA

INTERIOR HABITABLE: 162.58 m.² / 1,750.00 sqft
 EXTERIOR HABITABLE: 40.87 m.² / 43992 sqft
TOTAL: 203.45 m.² / 2,18992 sqft



G-302

PLANTA NIVEL 3

ESC: 1:75

GRAND PENINSULA - EDIFICIO G

DEPTO. 302

17/06/2022

