

12T63

La Espiga Condominio Alcalá II Lote 63

COMO INVERSIÓN | PARA VIVIR

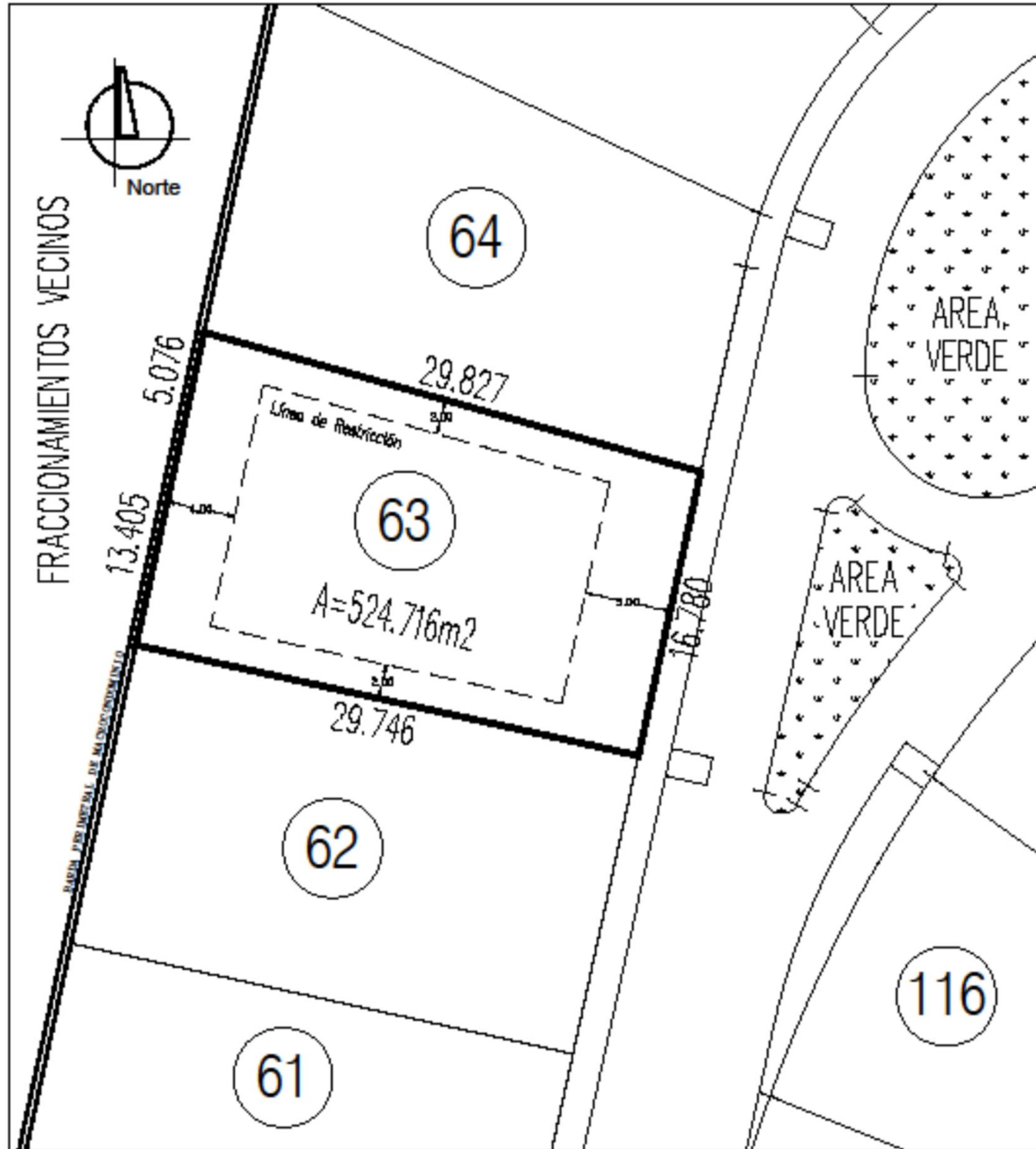
LA ESPIGA[®]
VIDA Y COMUNIDAD

ALCALÁ I-II

ACCESO

- CASETA DE ACCESO
- PÉRGOLA
- ARENERO
- E ESTACIONAMIENTO
- PARQUE CANINO
- BANCA ROTONDA
- LAGO

Detailed description: This is a site plan map for the 'La Espiga' residential complex, specifically the 'Alcalá I-II' phase. The map shows a large, irregularly shaped plot of land divided into numerous individual lots, numbered from II-66 down to I-30. A prominent red arrow points to Lot II-63, which is highlighted with a red circle. The map includes various amenities: several parking areas marked with 'E', a dog park (parque canino) with a dog icon, a trash area (arenero) with a trash can icon, a pergola (pérgola) with a house icon, and a lake (lago) with a blue wavy icon. There are also circular benches (banca rotonda) and access points (caseta de acceso) marked with arrows. The map is titled 'LA ESPIGA VIDA Y COMUNIDAD' and 'ALCALÁ I-II'. A legend on the right side explains the symbols used for the amenities.



Condominio Alcalá II

Área verde Lote - 63

SUPERFICIE: 524.71 m²

PRECIO M²: \$5,938.66 x m²

PRECIO: \$3,116,074.50

12T63

ACTIVO[®]


INMOBILIARIO

¡VEN Y VISÍTANOS!

Consulta todo nuestro catálogo de propiedades en:

www.activoinmobiliario.mx

Síguenos en:

 activo-inmobiliario

Querétaro, Qro.

T. 442 192 7722