



almar
REAL ESTATE WITH SOUL

MARA

Apartment 402

Mara Residences

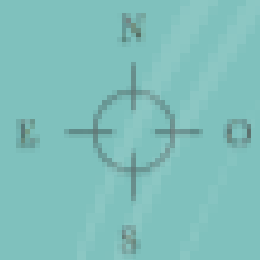
Mara Residences it is the most exclusive condominium within the private community of Playacar Phase II.

Composed of 24 luxury residences, with warm and illuminated spaces, full of comfort and serenity that adapto the magic of the Mexican Caribbean.

A harmonious fusion between its modern and minimalist architecture, with the nature that surrounds it.

Roof deck with an incredible view of the sea and just a few steps from the beach, walking by trails within the jungle, with stunning landscapes that will be engraved in your memory.

The best location in the city, next to the famous Fifth Avenue, Five Star Hotels, Golf Course 18-hole Hard Rock Hotel, restaurants and shopping centers.



Ubicación

5th Avenue

mar

Highway Tulum, Cancún

Playacar Phase II

Located in Playacar Phase II, the most exclusive private complex in Playa del Carmen. Right next to The 5th Avenue, surrounded by luxury hotels, 18-hole golf course, restaurants and malls.

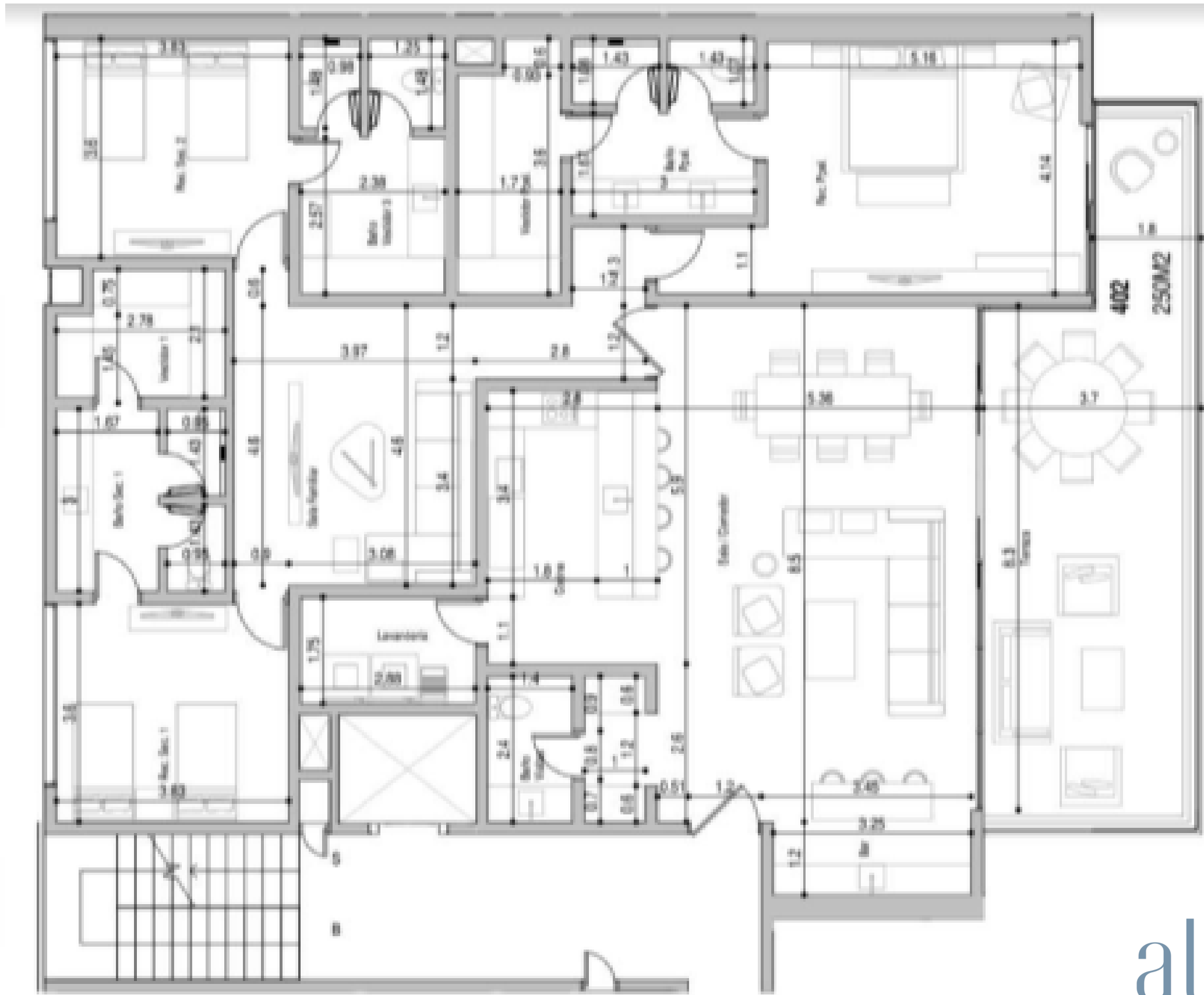


CHARACTERISTICS

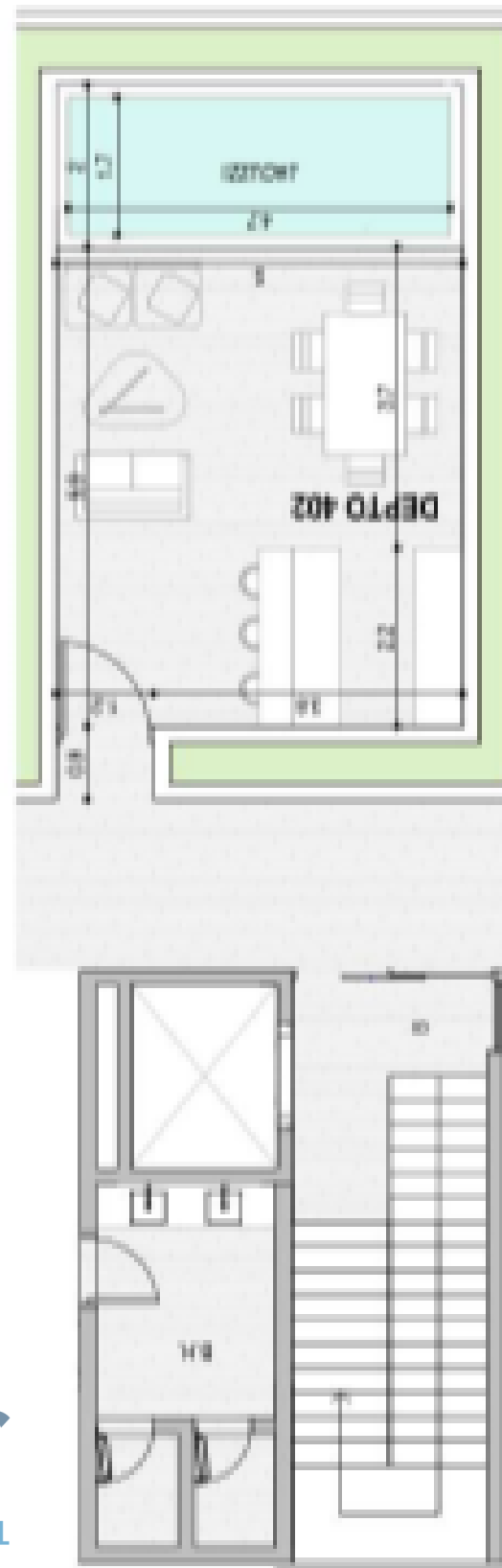
- Indoor area: 212.15 m²
- Terrace area: 37.44 m²
- Rooftop area: 57.25 m²
- Total area: 306.84 m²
- It has: Three bedrooms, 3 1/2 bathrooms, laundry, kitchen, dining room, living room, family room, terrace, two parking spaces and one storage
- Equipment: 100% finished, furnished, decorated and equipped for your use.



Plans



1 DEPARTAMENTO 402
1:100



1 SOLARIUM 402
1:100



alman
REAL ESTATE WITH SOUL



almar
REAL ESTATE WITH SOUL



almar
REAL ESTATE WITH SOUL





almar
REAL ESTATE WITH SOUL





almar
REAL ESTATE WITH SOUL



almar
REAL ESTATE WITH SOUL



almar
REAL ESTATE WITH SOUL



almar
REAL ESTATE WITH SOUL



almar
REAL ESTATE WITH SOUL




almar
REAL ESTATE WITH SOUL



almar
REAL ESTATE WITH SOUL



almar
REAL ESTATE WITH SOUL




almar
REAL ESTATE WITH SOUL



almar
REAL ESTATE WITH SOUL



almar
REAL ESTATE WITH SOUL





AMENITIES

- Rooftop with semi-Olympic pool, jacuzzi, poolbar, splash pad, 3 private pergolas.
- 2000 m2 of gardens and walkers.
- Gym, Spa and Steam.
- Suite for visits.
- Motor Lobby, 24/7 security.
- Video Surveillance Cameras.
- Access to the beach.
- Equipment: Kone elevators, electrical substation, emergency plant, water softening plant, fire cistern, cistern for supply tenants, among others.



almar
REAL ESTATE WITH SOUL



almar
REAL ESTATE WITH SOUL



almar
REAL ESTATE WITH SOUL







almar
REAL ESTATE WITH SOUL



almar
REAL ESTATE WITH SOUL




almar
REAL ESTATE WITH SOUL

Engineering and Systems

- 59 parking spaces
- 2 water tanks
- Fire prevention system
- Site, camera and 24-hour recording security system.
- Water softener
- Electrical substation for emergencies
- 750 KVAS transformer



CONTACT



almar
REAL ESTATE WITH SOUL

Camila Bertoniatti

+52 984 1970436

camila@almarmx.com