

uma

LIVING WELL

PLAYACAR

FINISHINGS

Proposal by studio

LLAVE MAESTRA



IG: Llavemaestramx

INDEX

Look & Feel	5
Architectural Plants	11
Renders	14
Descriptive Memory of Finishing	25

Concept

Beauty of the imperfect, in spaces that let you feel the passage of time with natural materials and environments in neutral tones that make up balanced rooms full of personality.

Style

Wabi-sabi style inspired by Japanese aesthetics based on the art of imperfection, accepting the natural cycle of life and discovering the beauty of the ephemeral. Simplicity and naturalness are two of the most characteristic features of this project that relaxes environments and fills them with simplicity and warmth.



LOOK & FEEL

Look & Feel

Imperfect, incomplete and ephemeral things



Look & Feel

Imperfect, incomplete and ephemeral things



Estilo

Contemporary

Maximal

Cold

Casual

Relaxed



Classic

Minimal

Warm

Sophisticated

Dramatic

Color Palette



Materials

Santo Tomas Martelinado



Wooden Strips



Travertino Beige



Apparent Concrete



Wicker

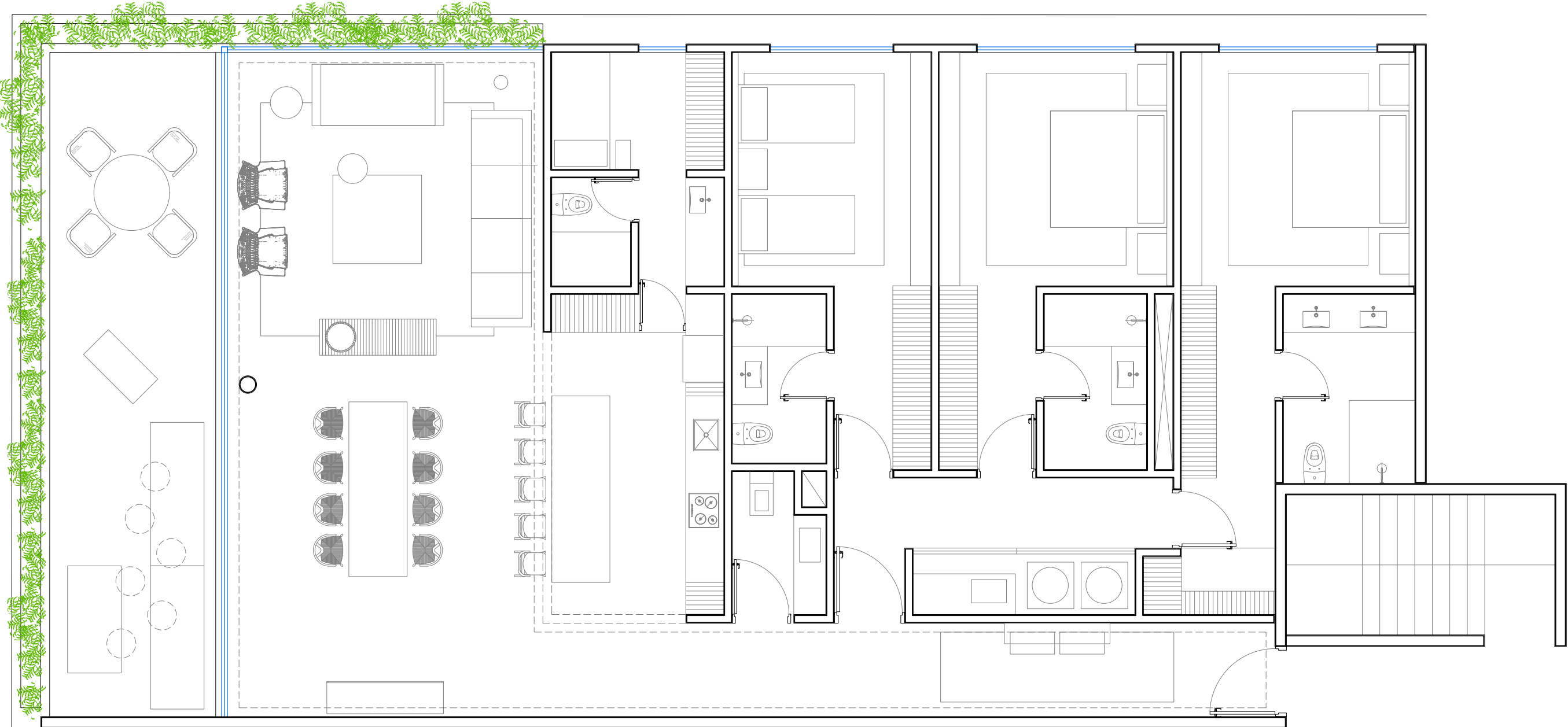


Wooden Lambrin

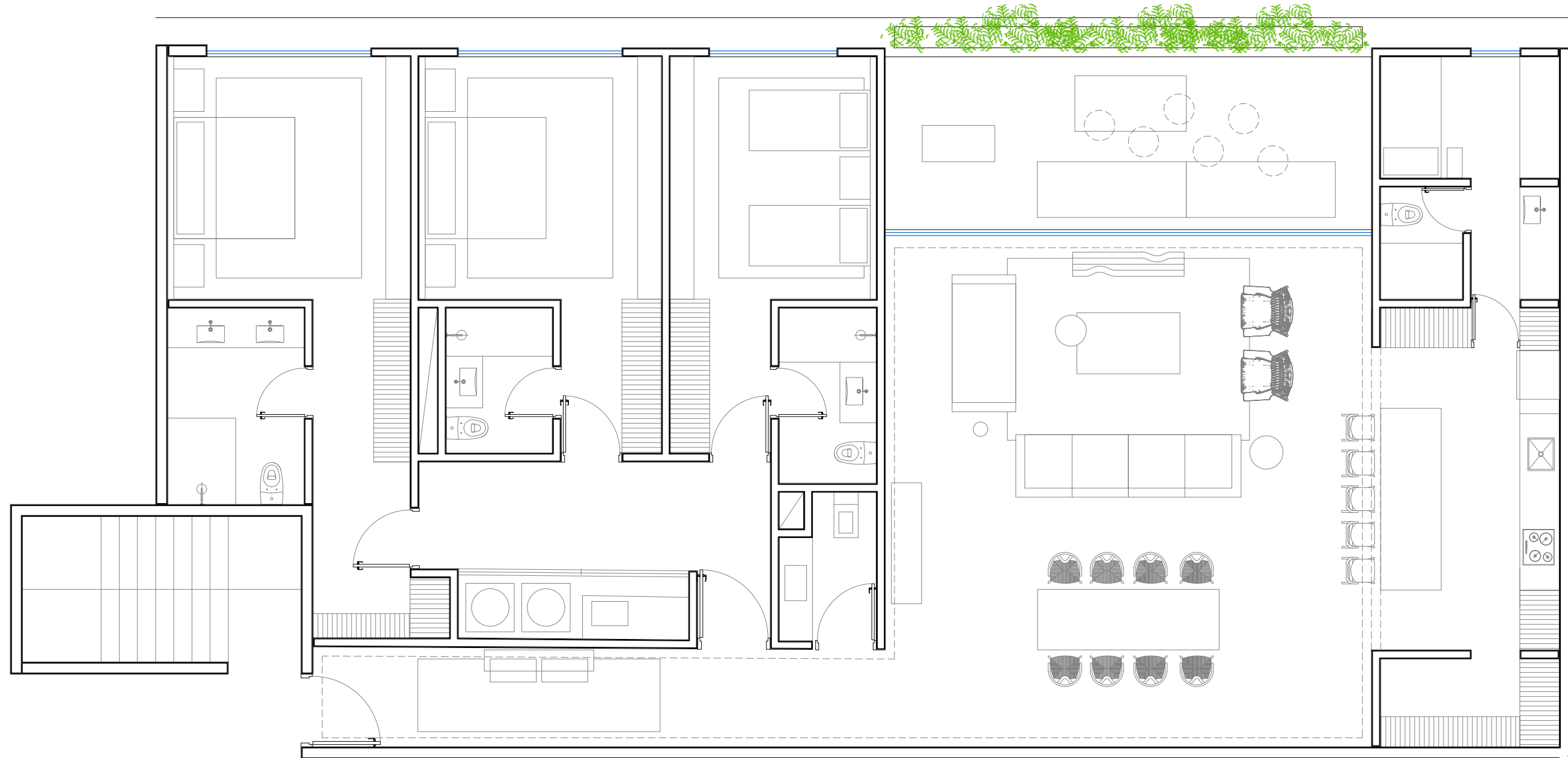


ARCHITECTURAL PLANTS

Funcionality Apartment
Deluxe Large



Funcionality
Apartment Plus



RENDERS









Over the Top
BORDEAUX
ABSOLUT
ABSOLUT





A white, wall-mounted toilet with a closed lid, set against a light wood paneling wall.

A black shower head with a flexible hose, mounted on the wood paneling wall next to the toilet.

A black towel rack mounted on the wood paneling wall, holding a folded white towel.

A light wood cabinet with a dark countertop, serving as a vanity. It has a floating stone countertop with a sink and a black faucet. Below the countertop, there are wooden cabinets and a shelf holding folded towels.

Three built-in shelves with backlit lighting, holding books and bottles of toiletries. The shelves are set into the wood paneling wall.

A light-colored, textured vase containing a dried plant, placed on the stone countertop next to the sink.

A white soap dish with a bar of soap, placed on the stone countertop next to the sink.

Two white bottles of toiletries with brown labels, placed on the second shelf from the top.

Two white bottles of toiletries with brown labels, placed on the third shelf from the top.

A book titled "The Art of Knitting" placed on the top shelf.

A book titled "The Art of Knitting" placed on the top shelf.



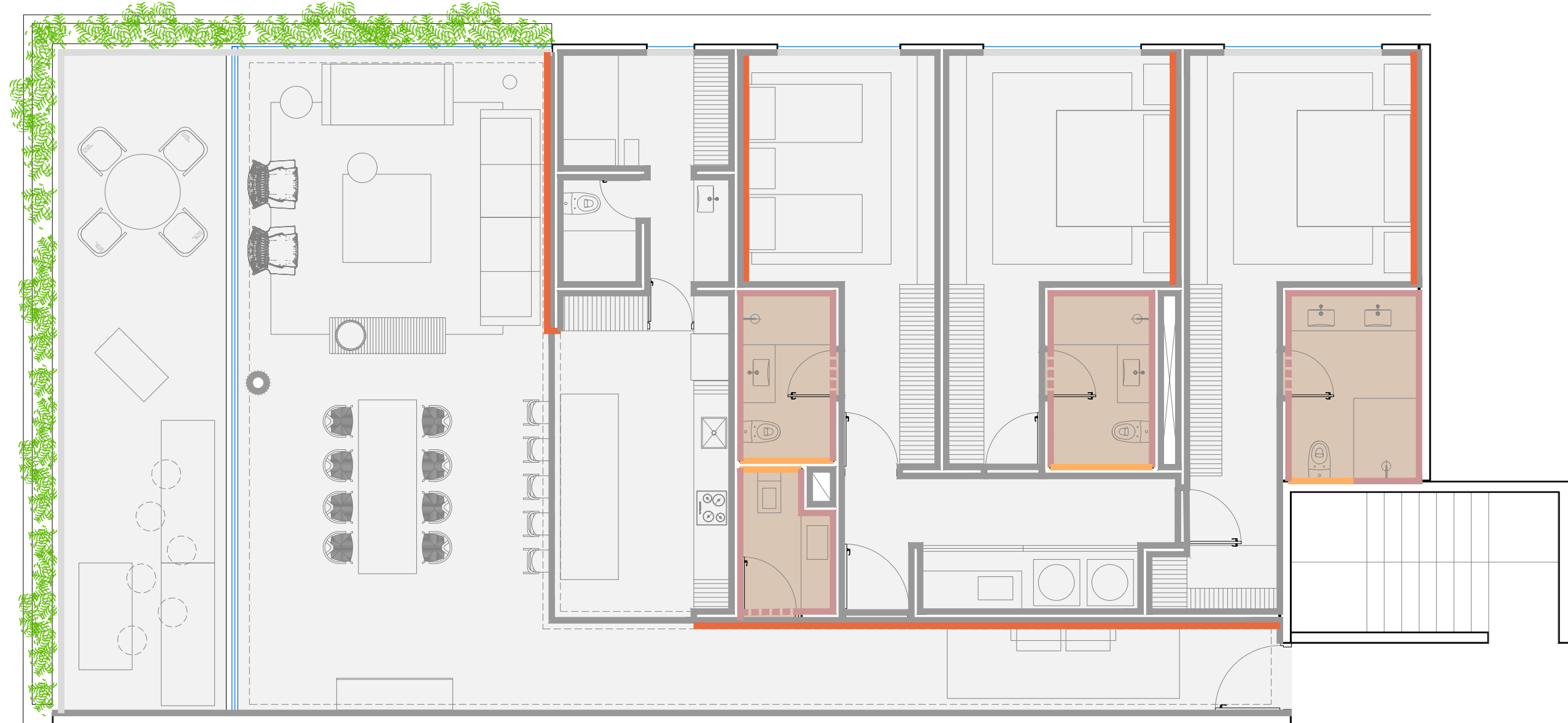


Gardens in France
INTERIORS
NOUVEAU



DESCRIPTIVE MEMORY OF FINISHINGS

Deluxe Large Apartment Walls, floors and baseboards



- | | | | |
|---|---|---|--|
|  | 1.20m X 2.20m HIGH CONCRETE WALLS WITH APPARENT CIMBRA MODULATED WITH CHUCUM TONE FINISHING |  | LAMBRIN OF AMERICAN OAK SMOOTH INKED ACCORDING TO SAMPLE WITH OIL FINISH |
|  | MODULATED APPARENT CONCRETE WALLS WITH CHUCUM TONE FINISH |  | MOKA PINK TRAVERTINE MARBLE WALLS |
|  | 2cm X 2cm STRIPED OF AMERICAN OAK STRIPS, DYED ACCORDING TO SAMPLE WITH OIL FINISH. |  | SANTO TOMAS MARTELIN MARBLE FLOORING 120cm X 80cm |
| | |  | TRAVERTINE Lambrini MOKA ROSE MARBLE FLOOR IN LARGE SLABS |

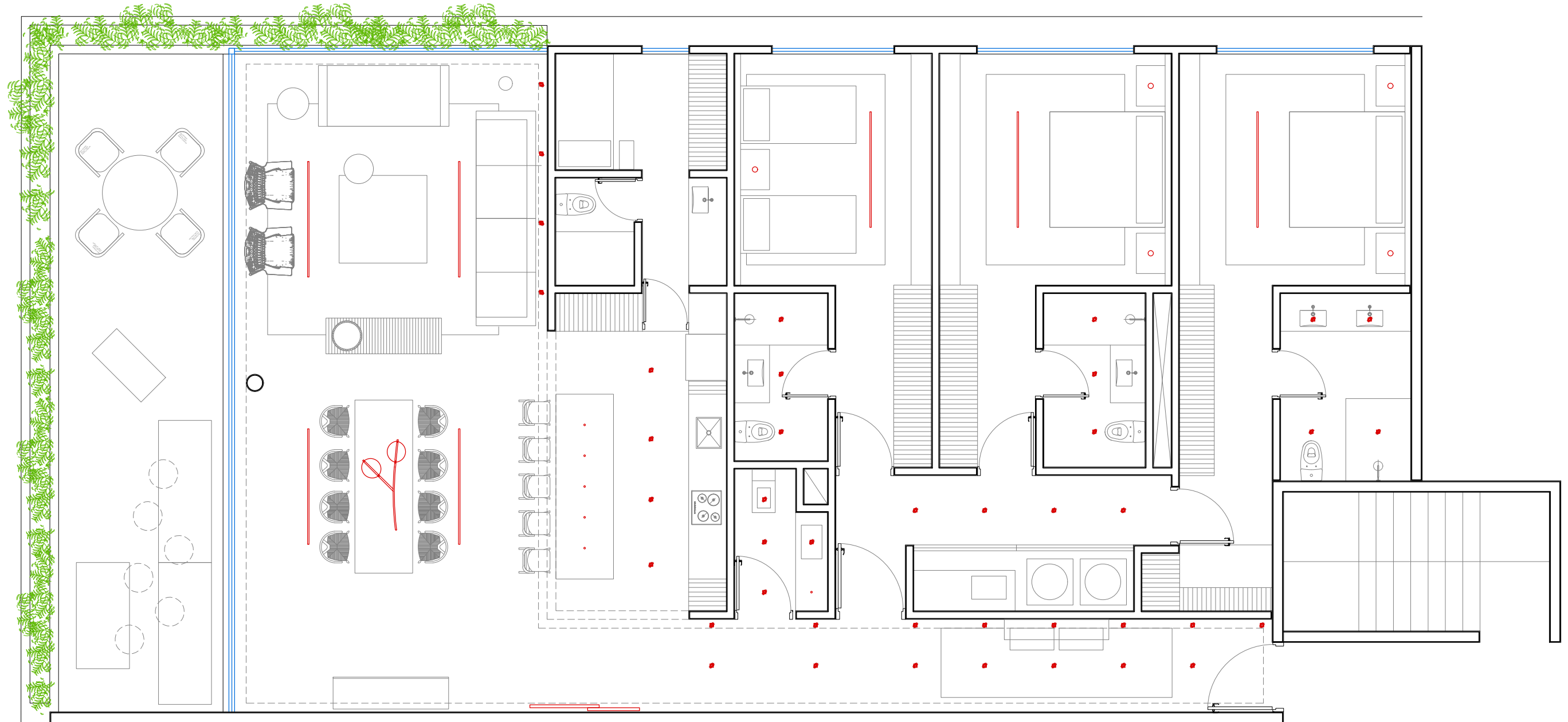
Apartment Plus

Walls, floors and baseboards

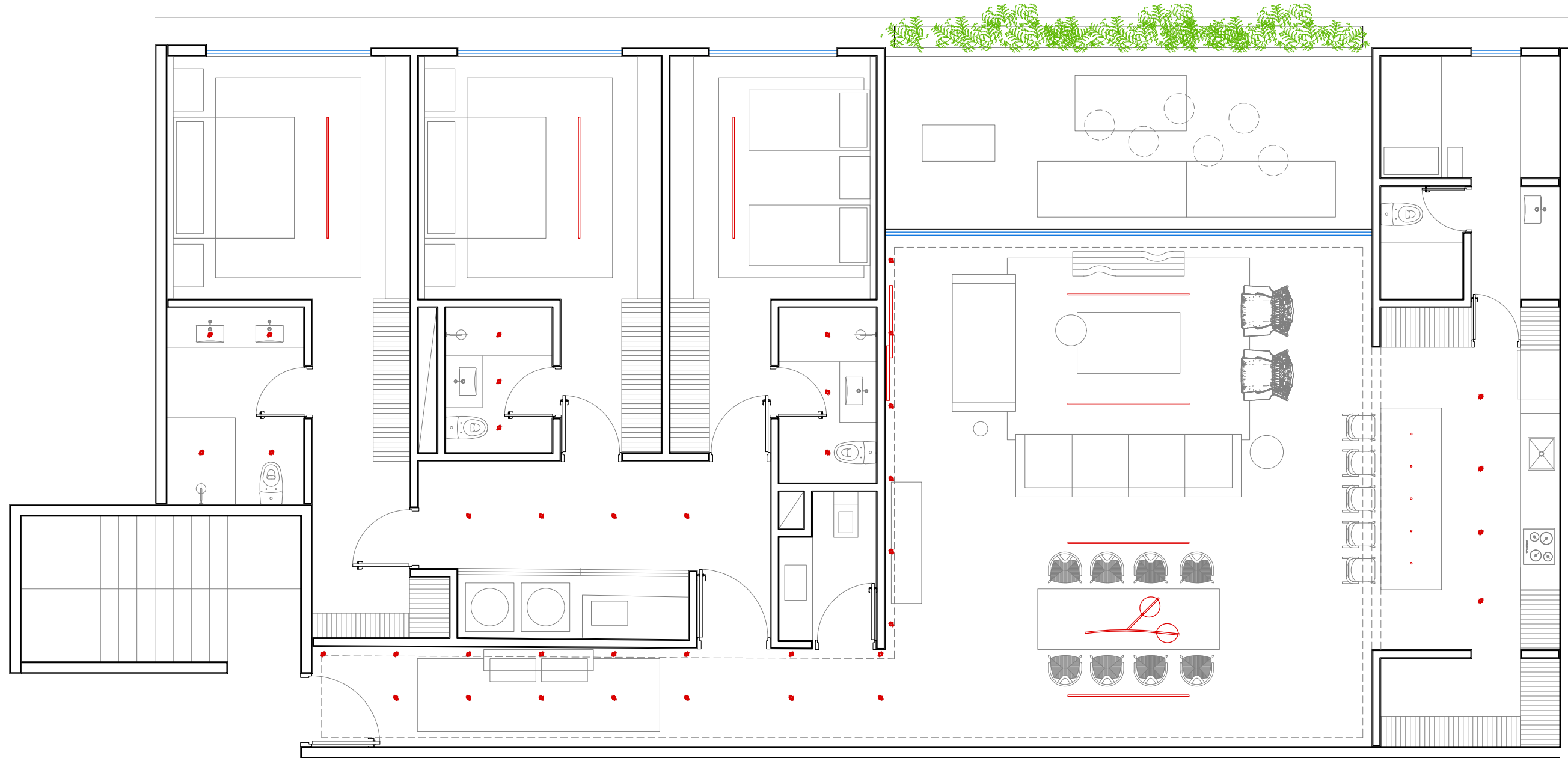


- | | | | |
|---|---|---|--|
|  | 1.20m X 2.20m HIGH CONCRETE WALLS WITH APPARENT CIMBRA MODULATED WITH CHUCUM TONE FINISHING |  | LAMBRIN OF AMERICAN OAK SMOOTH INKED ACCORDING TO SAMPLE WITH OIL FINISH |
|  | MODULATED APPARENT CONCRETE WALLS WITH CHUCUM TONE FINISH |  | MOKA PINK TRAVERTINE MARBLE WALLS |
|  | 2cm X 2cm STRIPED OF AMERICAL OAK STRIPS, DYED ACCORDING TO SAMPLE WITH OIL FINISH. |  | SANTO TOMAS MARTELIN MARBLE FLOORING 120cm X 80cm |
| | |  | TRAVERTINE Lambrini MOKA ROSE MARBLE FLOOR IN LARGE SLABS |

Illumination Deluxe Large Apartment



Illumination Plus Apartment



GENERAL FINISHINGS

Walls, floors and baseboards



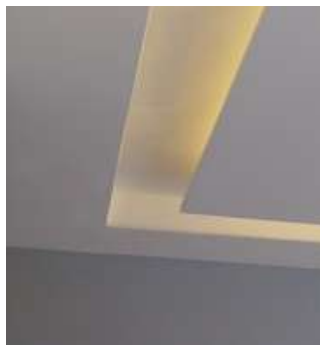
2cm x 2cm American oak strip lambrin walls inked according to sample with oil finish.



120cm x 80cm marble floors of marble santo Tomas martelinado.



Concrete walls with apparent formwork modulated at 1.20m x 2.20m in height, finished in chucum tone.



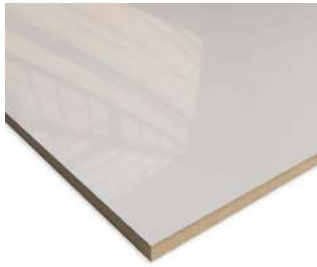
Ceilings of white brick with perimeter boxes with indirect lighting of warm LED strips.



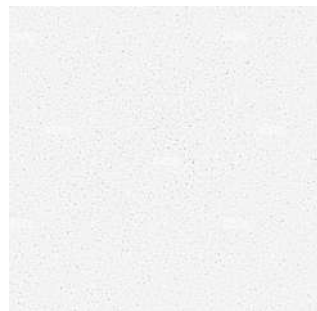
KITCHEN FINISHING



Smooth American oak lambrin inked according to sample with oil finish and intermediate black burls.



High gloss white lacquer.



White quartz coating on full plates for bars and back splash.



KITCHEN ACCESSORIES



Gas oven: Teka HLF 924 G or similar.



Built-in gas grill Teka GZC 75330 or similar



Recessed gas grill Teka GZC 75330



Helvex black kitchen faucet model E-310- EB

BATHROOM FINISHING

Walls, floors and baseboards



Walls and floors of full slab beige pinkish mocha travertine.



Smooth American oak lambrin inked according to sample with oil finish and black intermediate bullae.



BATHROOM ACCESSORIES



Helvex Ebano Towel Rack
Model 15109-EB



Helvex Premier Ebano
single lever lavatory faucet
model 909-EB



Helvex Ebony Premier Paper
Holder model 150104-EB



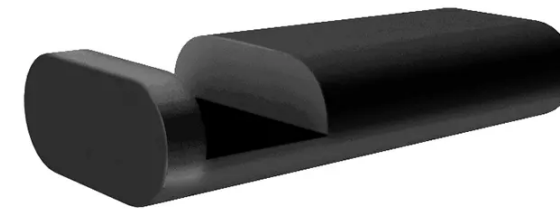
Ebano Towel Bar Helvex
model 15105-EB



Helvex Premier Ebano
Shower Mixer Model
E-702-EB



Kubica Ebano Helvex fixed
jet shower head model
H3006-TR035-EB



Premier Ebony Single Hook
Helvex Model 15106-EB



Duravit Darling New 254409 wall
hung toilet

LIGHTING ACCESORIES



Moduline 26 200cm flush-mounted rail by Nekothink design



ML26 Spotlight Nekothink design



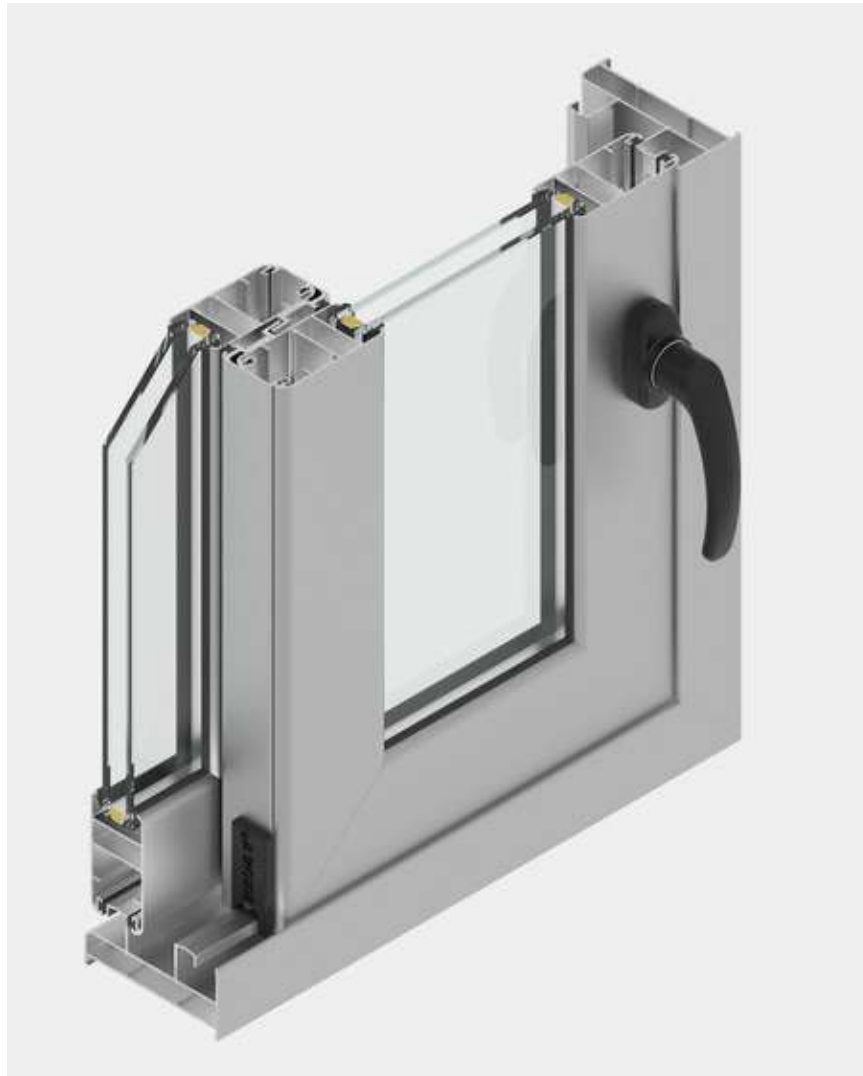
FLOS Spot F80



TERARACE TEMI-8304506F-DN Neko think design

GENERAL FINISHING

Window and door frames



To obtain energy efficiency and optimization of the HVAC equipment and to have an acceptable resistance against the indicated wind load of up to 243 km / hr., the glazing system should be an insulated type system, where the exterior face consists of laminated float glass with Sentriglass film or similar in quality and efficiency, an air chamber of at least 1/2" and the interior face with tempered glass. It is recommended to use the 100 or 150 series of eurovent line in black color.



