

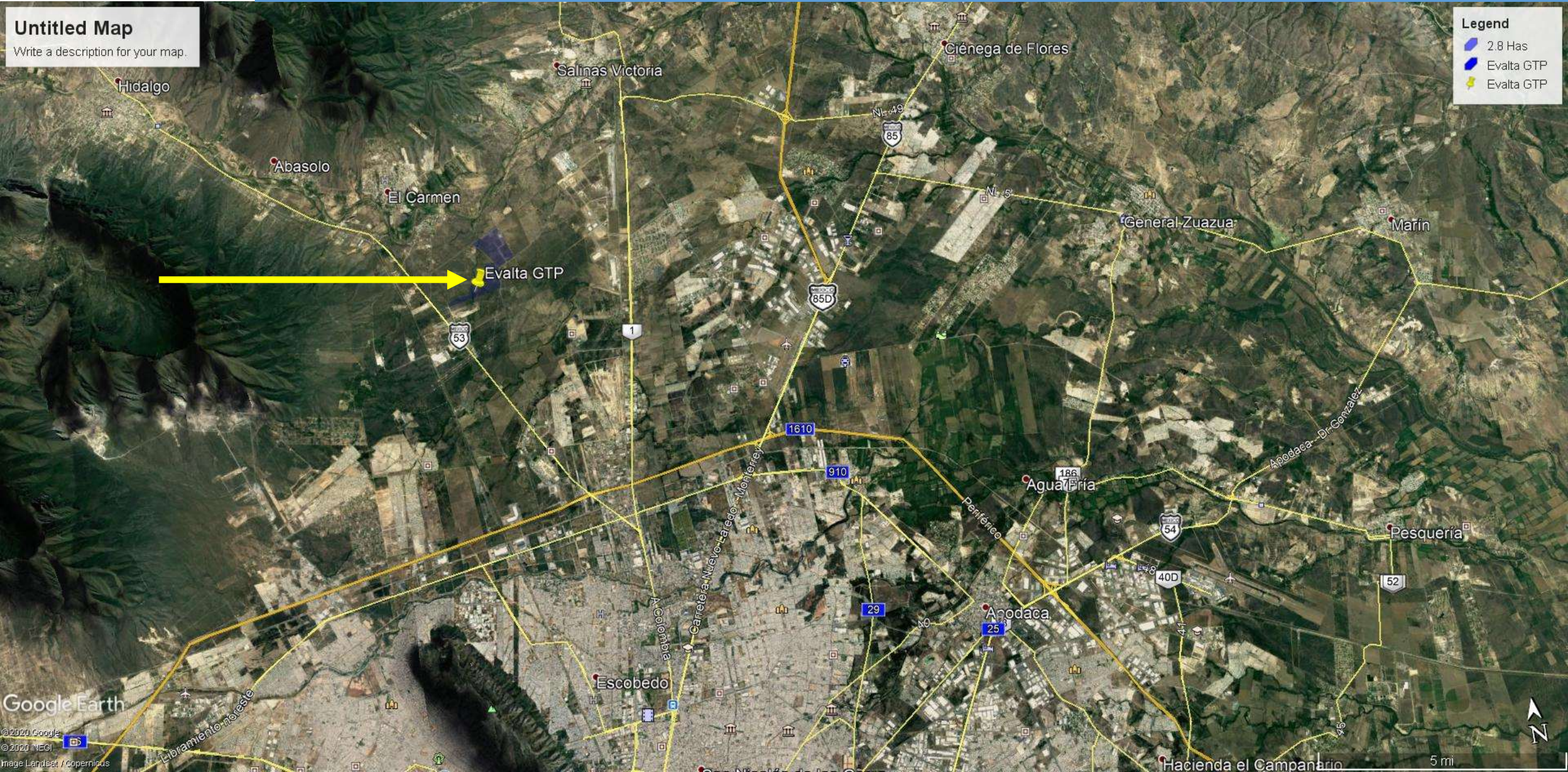
Evalta

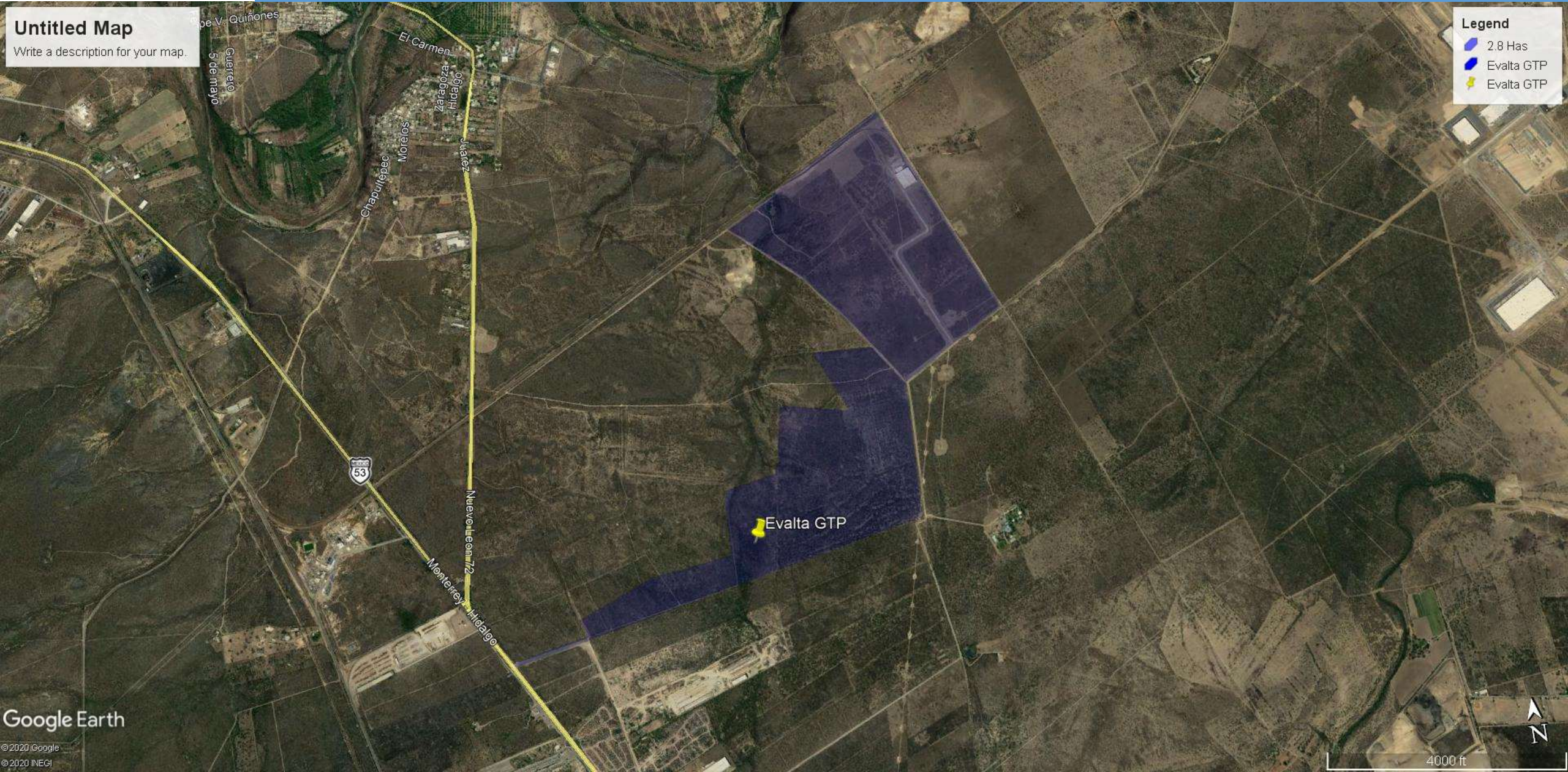
Industrial
Parks

GLOBAL TECHNOLOGY PARK

YOUR WORLD CLASS LOGISTICAL AND MANUFACTURING HUB





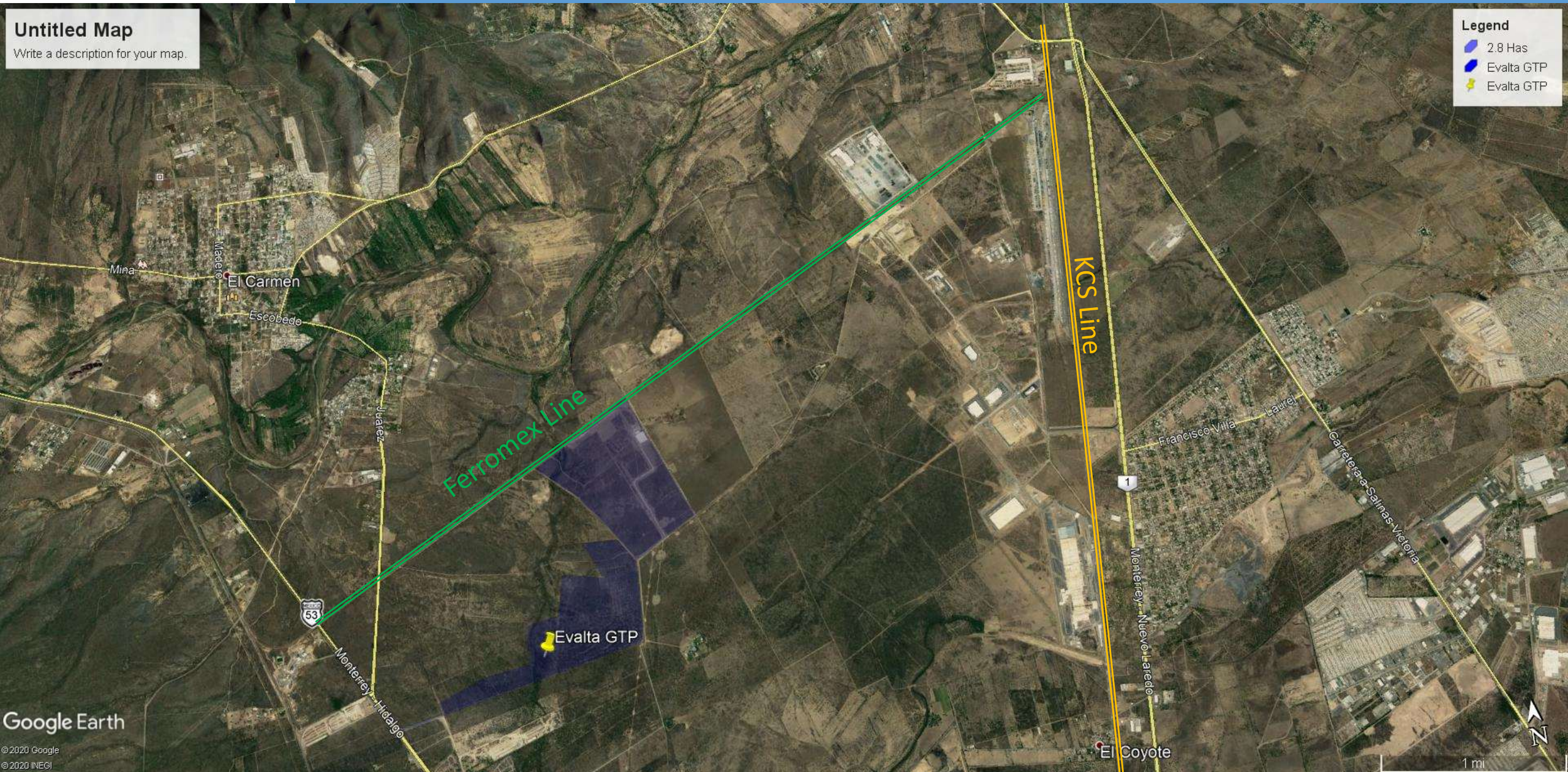


Untitled Map
Write a description for your map.

Legend

- 2.8 Has
- Evalta GTP
- Evalta GTP





Legend

- 2.8 Has
- Evalta GTP
- Evalta GTP

Untitled Map
Write a description for your map.

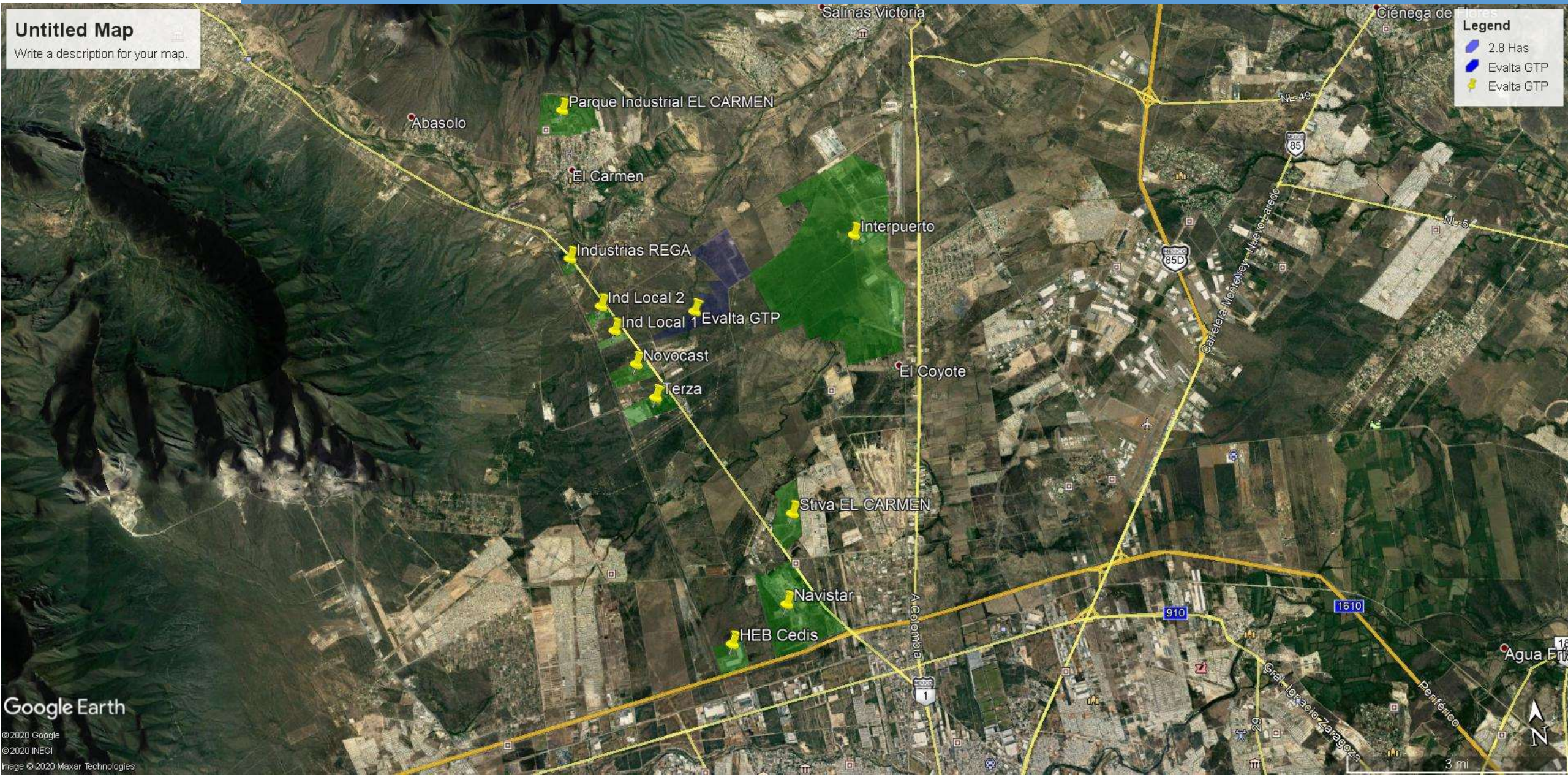


PARK ENTRANCE

OXXO / GAS STATION

OXXO CONVENIENCE STORE
LOCATED JUST 200 METERS
SOUTH ON OPPOSITE SIDE
OF EVALTA GTP ENTRANCE

LOCAL INDUSTRY LOCATIONS

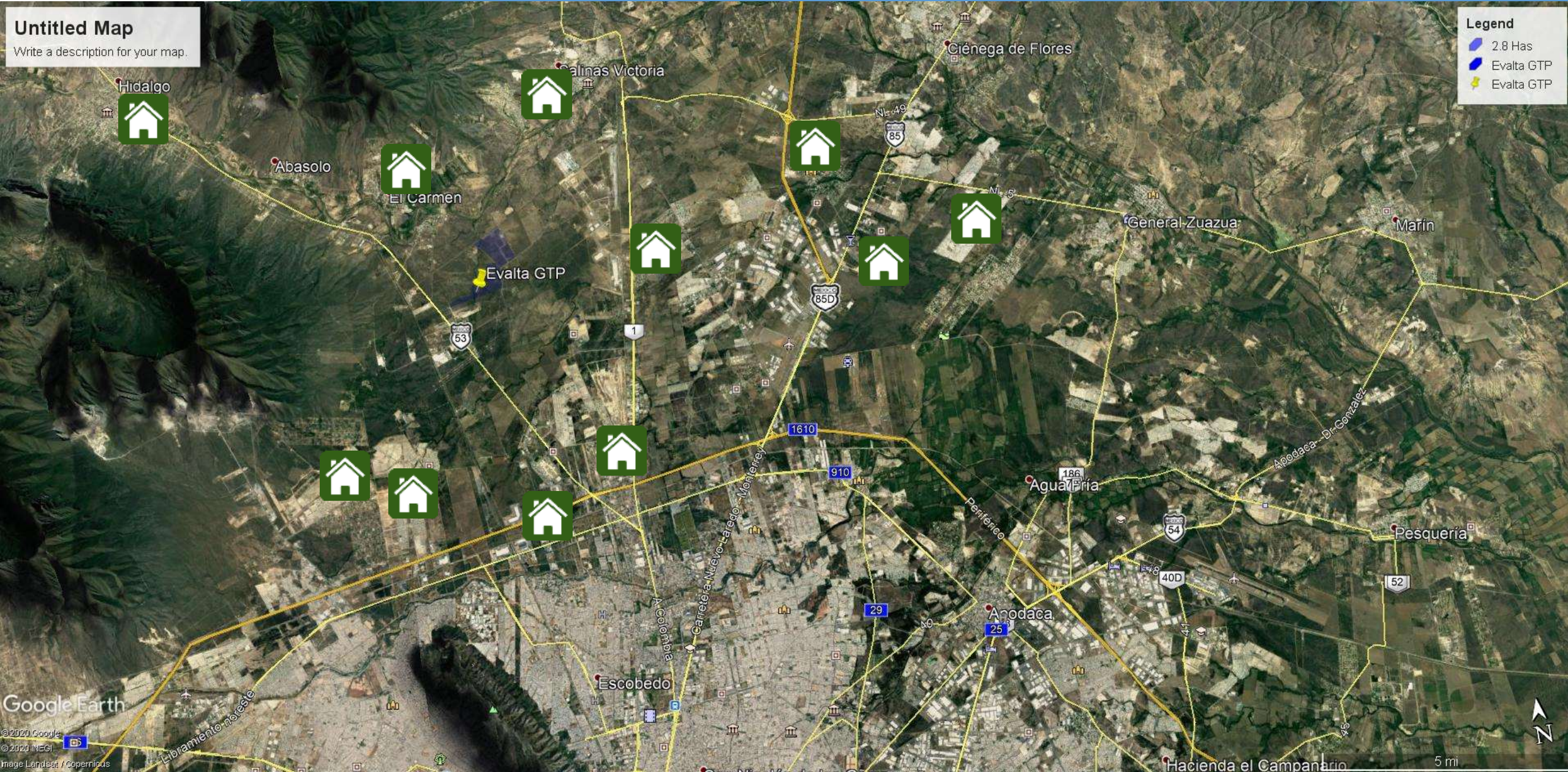


Untitled Map
Write a description for your map.

Legend

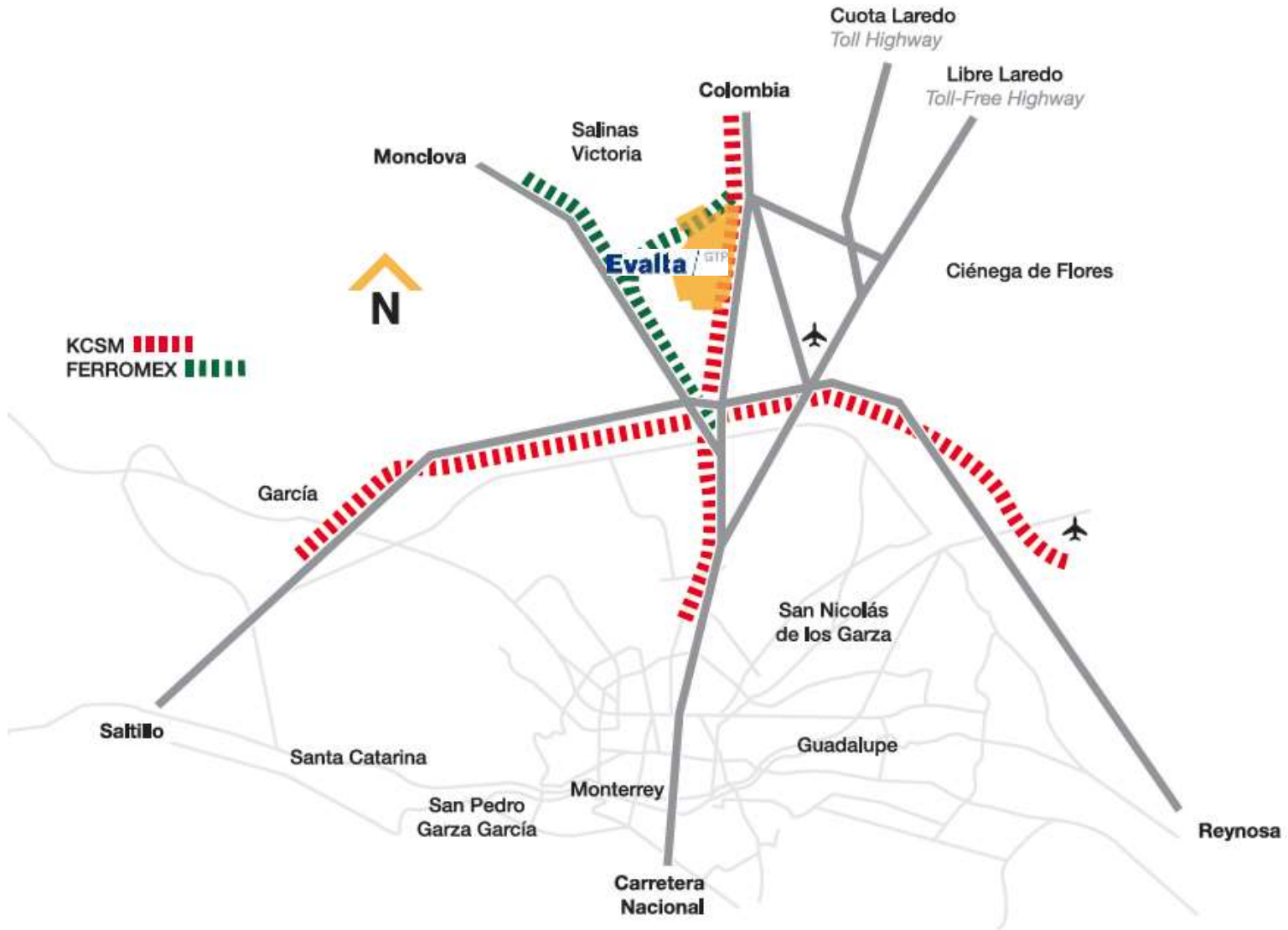
- 2.8 Has
- Evalta GTP
- Evalta GTP

NEARBY HOUSING LOCATIONS



1. Located on the Monterrey – Monclova Corridor – KM 12
2. Better proximity to the metropolitan área than nearby competing parks (Interpuerto, Hofusan, etc...)
3. Proximity to labor markets all around our park such as Esbobedo, El Carmen, Hidalgo, Abasolo, Salinas
4. Primary infrastructure (electricity, natural gas, telecommunications) located close to our park
5. Well water and sanitary sewage to be readily available within de project
6. Housing developments located in the general área
7. Our location allows our clients to connect to main highways located at less tan 5 minutes from the park

WE ARE LOCATED IN THE COMMERCIAL CROSSROADS WITH ACCESS TO THE FERROMEX AND KCSM RAILWAYS



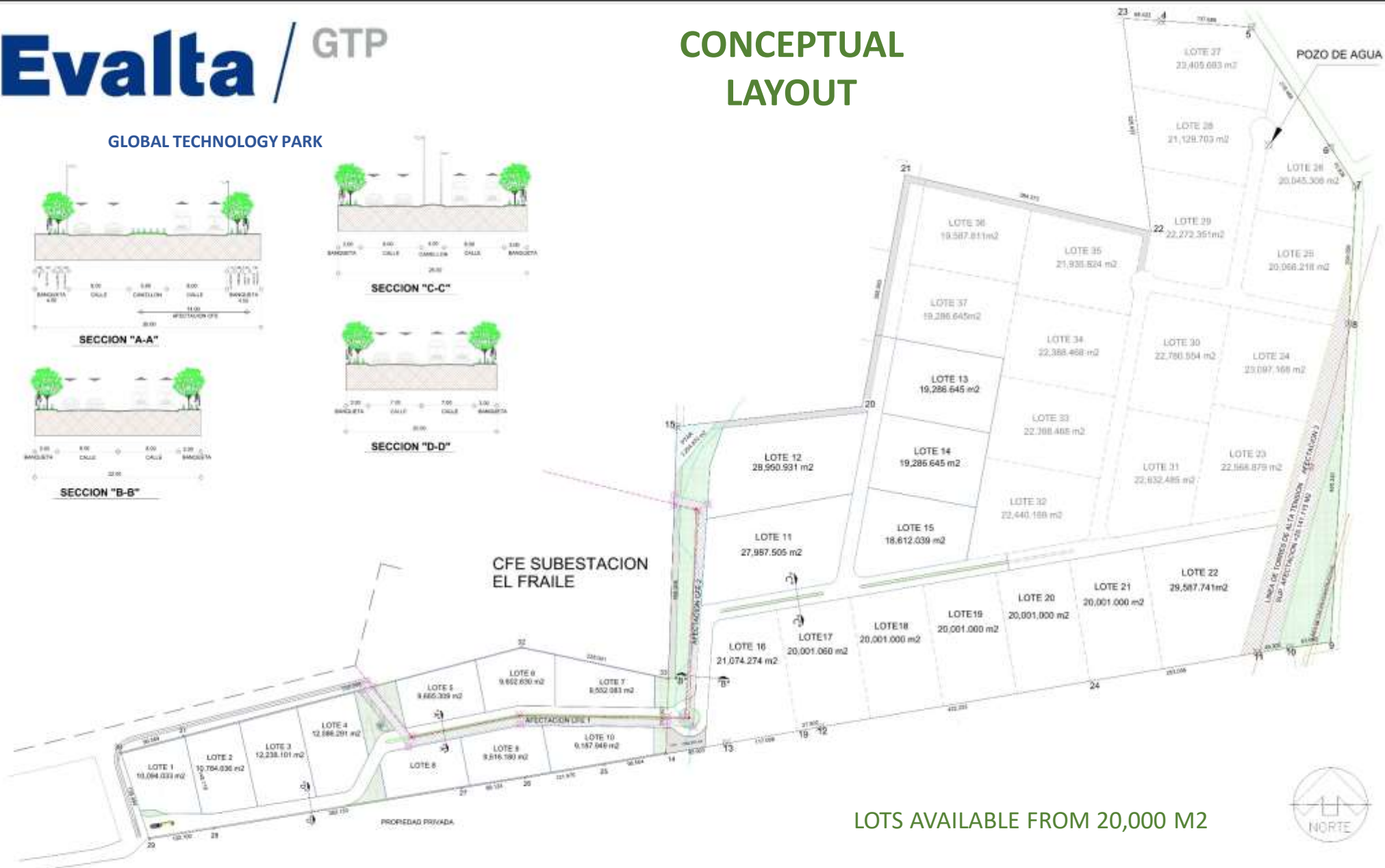


The railway hub runs across the NAFTA highway passing through Canada, the U.S., and Mexico

It runs for over 2,500 miles

It reaches more than 70 million consumers

GLOBAL TECHNOLOGY PARK



LOTS AVAILABLE FROM 20,000 M²



NOTES:

PROPUESTA

PARA PROPUESTA
POR PROYECTO

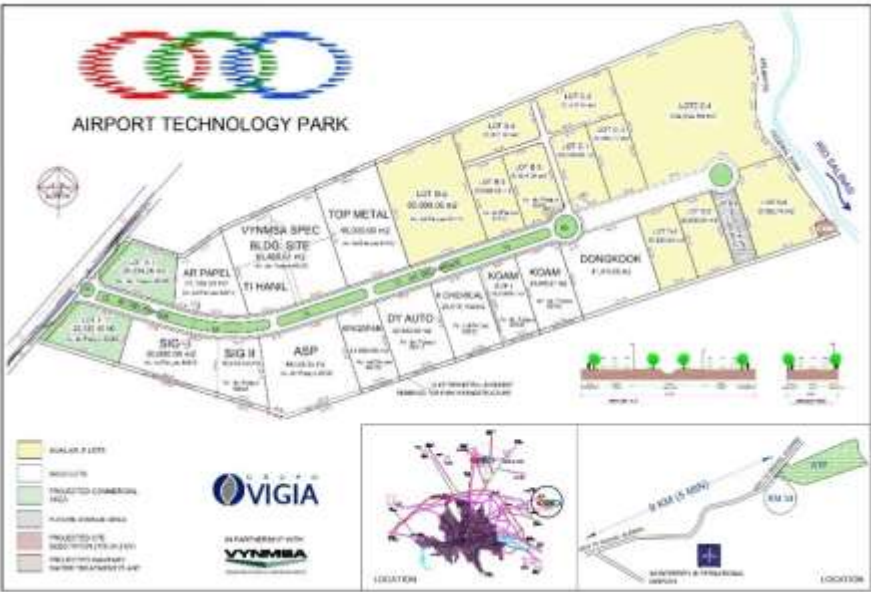
ESTE PLANO Y TODO SU CONTENIDO SE ENTREGAN COMO SERVICIO PROFESIONAL Y PARA EL PROYECTO DE OBRAS DE CONSTRUCCION Y MANEJO DE LA OBRA. EL PROYECTO DE OBRAS DE CONSTRUCCION Y MANEJO DE LA OBRA DEBE SER REALIZADO DE ACORDO A LAS ESPECIFICACIONES DEL PROYECTO Y DE ACORDO A LAS ESPECIFICACIONES DEL PROYECTO DE OBRAS DE CONSTRUCCION Y MANEJO DE LA OBRA.

LAYOUT:	REFERENCE:	No.	REV. DATE:	REVIEW DESCRIPTION:
REL_REFER_1	DESC_REFER_1	0	FECHA_REV_0	DESC_REFER_0
REL_REFER_2	DESC_REFER_2	1	FECHA_REV_1	DESC_REFER_1
REL_REFER_3	DESC_REFER_3	2	FECHA_REV_2	DESC_REFER_2
REL_REFER_4	DESC_REFER_4	3	FECHA_REV_3	DESC_REFER_3
REL_REFER_5	DESC_REFER_5	4	FECHA_REV_4	DESC_REFER_4

DESIGNO:	DIBUJO:	REDA. DISEÑO:
PROYECTISTA	PROYECTO	REDA. PROYECTO
REVISADO	REVISO	REDA. REVISO
APROBADO	APROBADO	REDA. APROBADO
COORDINADO	COORDINADO	REDA. COORDINADO

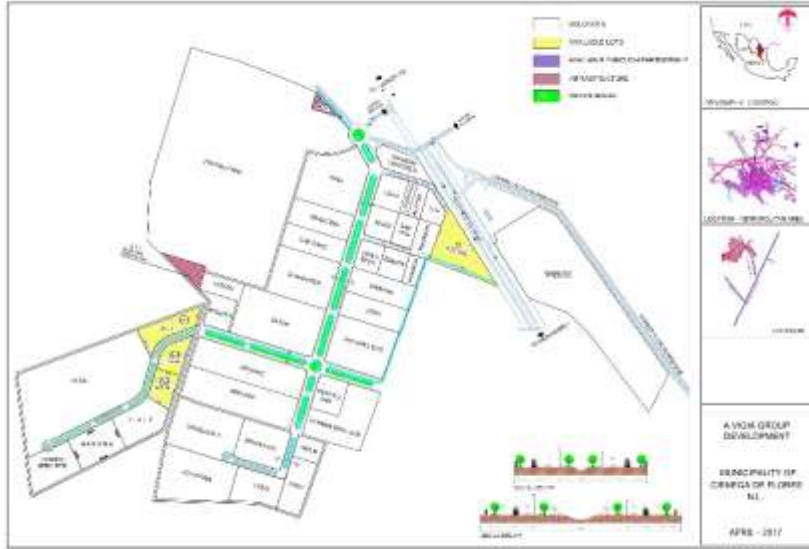
PROYECTO:	PROYECTO:
DETALLE	PROYECTO
TITULO_1	TITULO_1
TITULO_2	TITULO_2
AREA	NO_DIBUJO

OUR OTHER EVALTA PARKS



COMPANY	YEAR EST.	COUNTRY	GIRO	EMPLOYEES
SIG	2011	MEXICO	PRODUCTION SPECIALIZING IN ACSR	200
ACERD/SUCD/PALME	2013	MEXICO	PRODUCTION SPECIALIZING IN ACSR	ENCLAVAGE CONSTRUCTION
DY AUTO	2015	KOREA	AUTOMOTIVE	70
KEUMONG	2015	KOREA	AUTOMOTIVE	ENCLAVAGE CONSTRUCTION
KOAM	2015	KOREA	AUTOMOTIVE	300
NIHAPTEL	2015	MEXICO	PRODUCTION OF PANEL	ENCLAVAGE CONSTRUCTION
TOP METAL MEXICO	2015	KOREA	AUTOMOTIVE	200
TI HAWL	2016	KOREA	AUTOMOTIVE	110
KINGSPAN	2016	USA	PANELS FOR CONSTRUCTION	100
DONGKOOK	2017	KOREA	AUTOMOTIVE	N/A





COMPANY	YEAR EST.	COUNTRY	PRODUCTS & SERVICES	EMPLOYEES
IRSA	1997	MEXICO	METALS RECYCLING	250
COOPERLIGNINE	2001	U.S.	ELECTRICAL COMPONENTS	1200
URENCO	2001	MEXICO	FOAM PRODUCTS	100
MITSUBISHI	2001	JAPAN	PLASTIC INJECTION	300
ALCOA	2001	U.S.	ALUMINUM WHEELS	370
DONALDSON	2002	U.S.	INDUSTRIAL FILTERS	250
DAVIS	2002	U.S.	WATER COOLERS	170
BRADWAY	2002	U.S.	AUTOMOTIVE SYSTEMS	200
BRIDGESTONE	2005	JAPAN	TIRE MFG.	250
LESTER	2005	MEXICO	MATRICES MTL.	30
JORDAN CENTERS	2006	U.S.	CONCRETE	140
ZINCO	2006	AUSTRIA	GALVANIZING	150
JCOPTINA	2006	U.S.	CONCRETE	300
ALSTOM	2007	FRANCE	TURBINE SYSTEMS	55
NIKKI	2008	JAPAN	CLIPWICKS	800
INTELLIGENT	2008	MEXICO	FOAM PRODUCTS	750
LECO	2009	DENMARK	COIN	50
HYDRO	2010	U.S.	METALS	40
REDFARM	2012	U.S.	INDUSTRIAL EQUIP.	30
UCH	2012	MEXICO	LOGISTICS	20
PRAXAIR	2014	MEXICO	POLYMER PRODUCTS	100
DAEWOO	2015	KOREA	AUTOMOTIVE	150
DAEWOO	2015	KOREA	AUTOMOTIVE	200
HANBIT	2015	KOREA	AUTOMOTIVE	100
DAEWOO	2015	KOREA	AUTOMOTIVE	100
CONVAL CAN	2016	KOREA	AUTOMOTIVE	40

