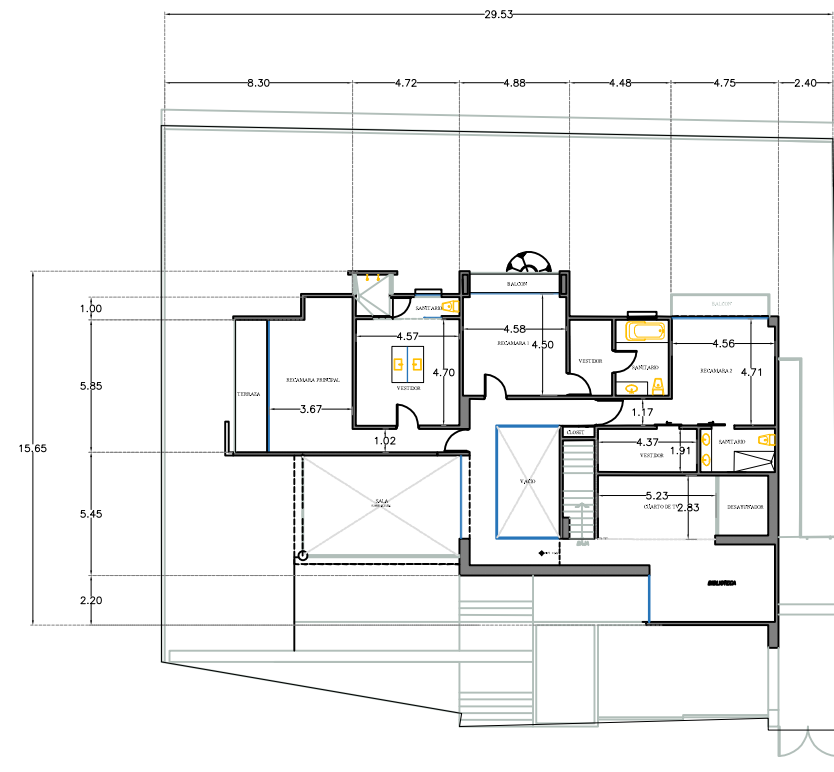
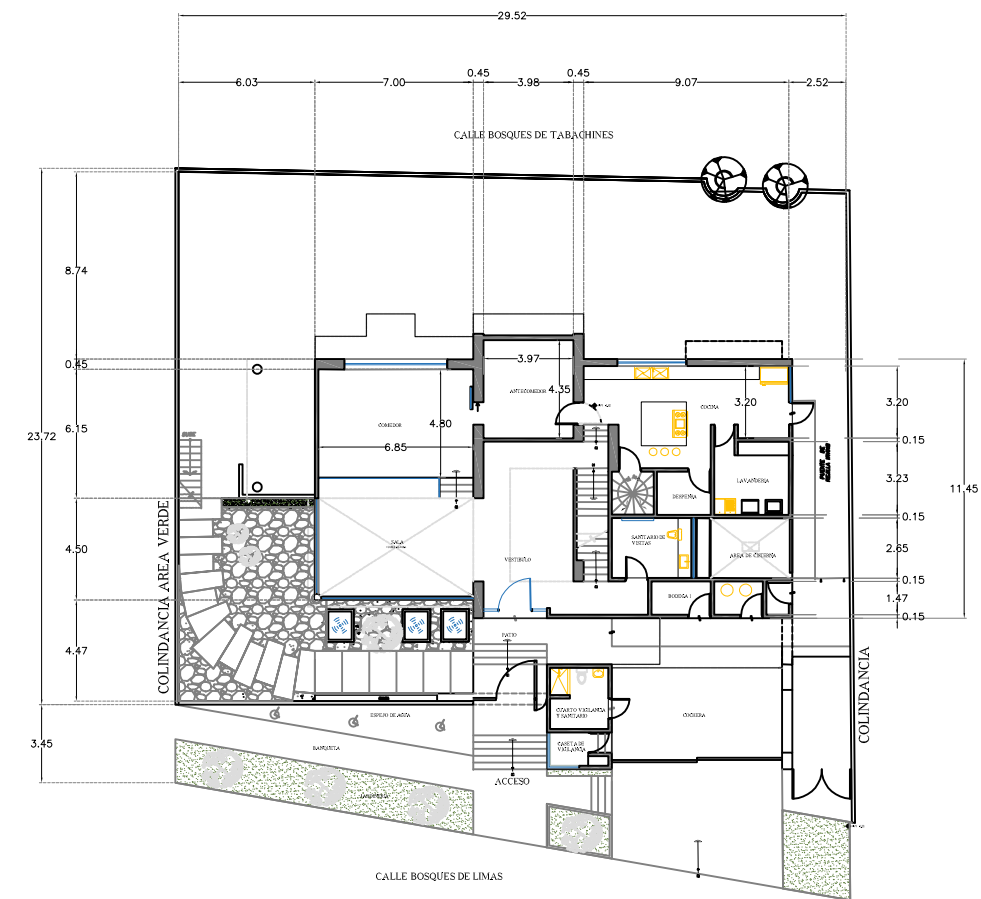


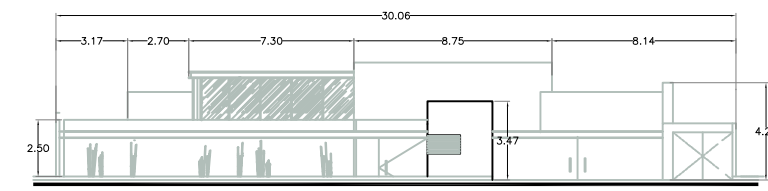
PLANTA ARQUITECTONICA SOTANO



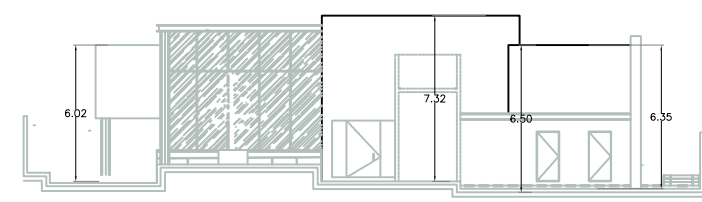
PLANTA ARQUITECTONICA PRIMER NIVEL



PLANTA ARQUITECTONICA PLANTA BAJA



FACHADA



ALZADO

Bosque de Limas

No.	Área	m2
	CONTRUCCION	901.35
	RENTABLE	645.81
	SERVICIOS	53.18
	CIRCULACION	29.08
	TERRENO	790.35