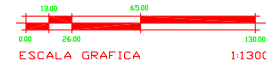
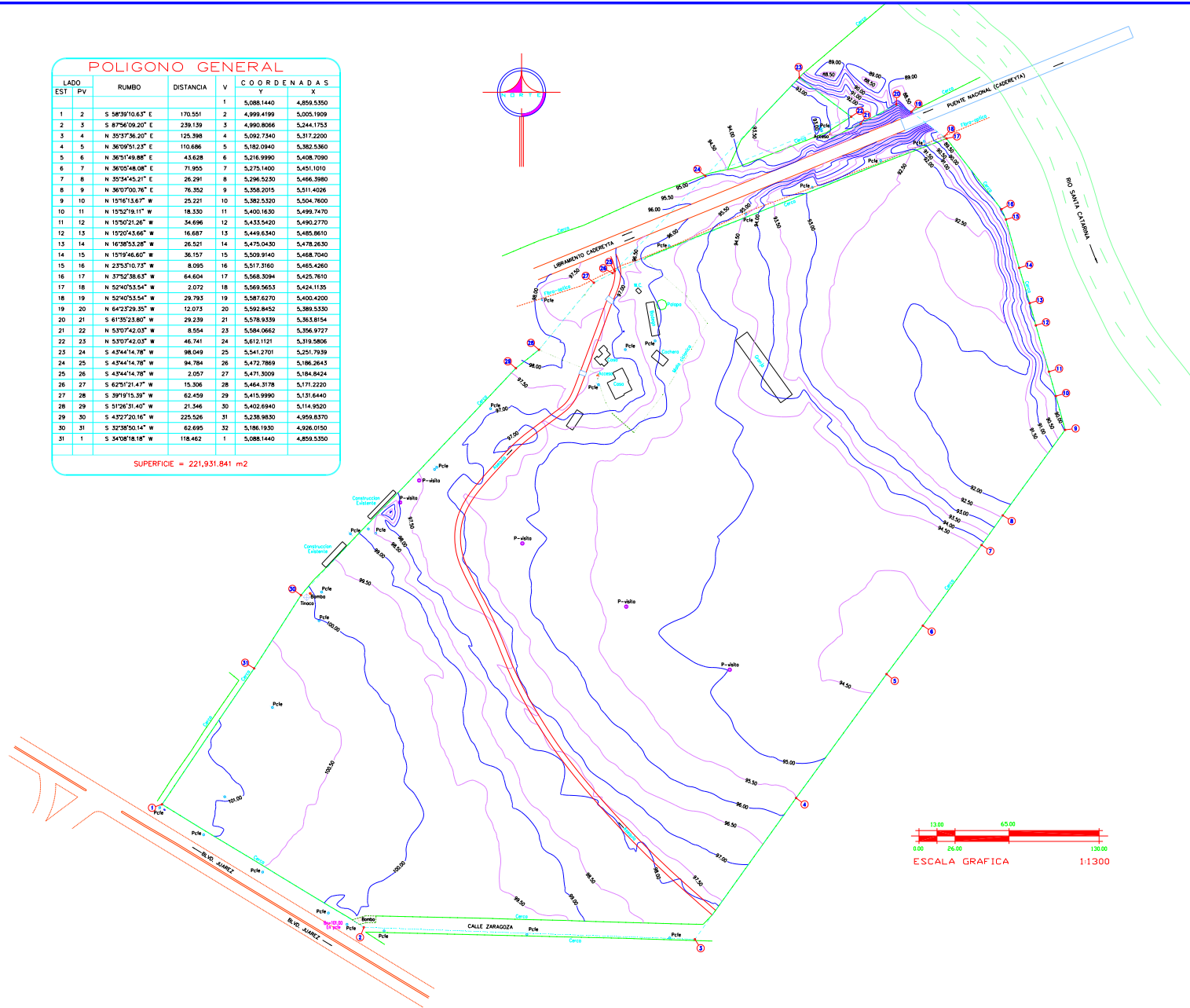
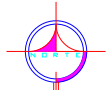


POLIGONO GENERAL

LADO EST	PV	RUMBO	DISTANCIA	V	COORDENADAS	
					X	Y
1	2	S 58°39'10.63" E	170.551	2	5,088.1440	-4,859.5350
2	3	S 87°56'09.20" E	239.139	3	4,999.4199	5,005.1909
3	4	N 35°37'36.20" E	125.398	4	5,092.7340	5,317.2200
4	5	N 36°09'51.23" E	110.666	5	5,182.0940	5,382.5360
5	6	N 36°51'49.88" E	43.628	6	5,216.9990	5,408.7090
6	7	N 36°50'56.08" E	17.955	7	5,275.1400	5,451.0100
7	8	N 35°54'45.21" E	26.291	8	5,296.5230	5,466.2980
8	9	N 36°07'00.76" E	76.352	9	5,358.2015	5,511.4026
9	10	N 15°16'13.67" W	25.221	10	5,382.5320	5,504.7600
10	11	N 15°52'19.11" W	18.330	11	5,400.1830	5,499.7470
11	12	N 15°50'21.28" W	34.696	12	5,433.5420	5,490.2770
12	13	N 15°20'43.66" W	16.687	13	5,449.6340	5,485.8610
13	14	N 16°38'53.28" W	35.521	14	5,475.0430	5,478.2630
14	15	N 15°19'46.60" W	36.157	15	5,509.9140	5,468.7040
15	16	N 23°51'0.73" W	8.095	16	5,517.3160	5,465.4280
16	17	N 37°52'38.63" W	64.604	17	5,568.3094	5,425.7610
17	18	N 52°40'53.54" W	2.072	18	5,569.5653	5,424.1135
18	19	N 52°40'53.54" W	29.793	19	5,587.6270	5,400.4200
19	20	N 64°23'29.35" W	12.073	20	5,592.8452	5,389.5350
20	21	S 81°50'23.80" W	29.239	21	5,578.9339	5,363.8154
21	22	S 53°07'42.03" W	8.554	22	5,584.0662	5,356.9727
22	23	N 53°07'42.03" W	46.741	23	5,612.1121	5,319.5866
23	24	S 43°44'14.78" W	98.049	24	5,541.2701	5,251.7939
24	25	S 43°44'14.78" W	94.784	25	5,472.7869	5,186.2643
25	26	S 43°44'14.78" W	2.057	26	5,471.3009	5,184.8424
26	27	S 62°51'21.47" W	15.306	27	5,464.3178	5,171.2220
27	28	S 39°15'15.39" W	62.459	28	5,415.9990	5,131.6440
28	29	S 51°26'31.40" W	21.546	29	5,402.6940	5,114.9520
29	30	S 43°27'20.16" W	225.526	30	5,238.9830	4,959.8370
30	31	S 32°38'50.14" W	62.695	31	5,186.1930	4,926.0150
31	1	S 34°08'18.18" W	118.462	1	5,088.1440	-4,859.5350

SUPERFICIE = 221,931.841 m²



LOTE-1

LADO EST	PV	RUMBO	DISTANCIA	V	COORDENADAS	
					X	Y
1	2	S 58°39'10.63" E	170.551	2	5,088.1440	-4,859.5350
2	3	S 87°56'09.20" E	239.139	3	4,999.4199	5,005.1909
3	4	N 35°37'36.20" E	125.398	4	5,092.7340	5,317.2200
4	5	N 36°09'51.23" E	110.666	5	5,182.0940	5,382.5360
5	6	N 36°51'49.88" E	43.628	6	5,216.9990	5,408.7090
6	7	N 36°50'56.08" E	17.955	7	5,275.1400	5,451.0100
7	8	N 35°54'45.21" E	26.291	8	5,296.5230	5,466.2980
8	9	N 36°07'00.76" E	76.352	9	5,358.2015	5,511.4026
9	10	N 15°16'13.67" W	25.221	10	5,382.5320	5,504.7600
10	11	N 15°52'19.11" W	18.330	11	5,400.1830	5,499.7470
11	12	N 15°50'21.28" W	34.696	12	5,433.5420	5,490.2770
12	13	N 15°20'43.66" W	16.687	13	5,449.6340	5,485.8610
13	14	N 16°38'53.28" W	35.521	14	5,475.0430	5,478.2630
14	15	N 15°19'46.60" W	36.157	15	5,509.9140	5,468.7040
15	16	N 23°51'0.73" W	8.095	16	5,517.3160	5,465.4280
16	17	N 37°52'38.63" W	64.604	17	5,568.3094	5,425.7610
17	18	N 52°40'53.54" W	2.072	18	5,569.5653	5,424.1135
18	25	S 67°51'32.78" W	256.785	26	5,472.7869	5,186.2643
25	26	S 43°44'14.78" W	2.057	27	5,471.3009	5,184.8424
26	27	S 62°51'21.47" W	15.306	28	5,464.3178	5,171.2220
27	28	S 39°15'15.39" W	62.459	29	5,415.9990	5,131.6440
28	29	S 51°26'31.40" W	21.546	30	5,402.6940	5,114.9520
29	30	S 43°27'20.16" W	225.526	31	5,238.9830	4,959.8370
30	31	S 32°38'50.14" W	62.695	32	5,186.1930	4,926.0150
31	1	S 34°08'18.18" W	118.462	1	5,088.1440	-4,859.5350

SUPERFICIE = 212,030.418 m²

LOTE-2 (AREA DE AFECTACION)

LADO EST	PV	RUMBO	DISTANCIA	V	COORDENADAS	
					X	Y
18	19	N 52°40'53.54" W	29.793	19	5,587.6270	5,400.4200
19	20	N 64°23'29.35" W	12.073	20	5,592.8452	5,389.5350
20	21	S 81°50'23.80" W	29.239	21	5,578.9339	5,363.8154
21	22	N 53°07'42.03" W	8.554	22	5,584.0662	5,356.9727
22	24	S 67°51'32.78" W	113.552	25	5,541.2701	5,251.7939
24	25	S 43°44'14.78" W	94.784	26	5,472.7869	5,186.2643
25	18	N 67°51'32.78" E	256.785	18	5,569.5653	5,424.1135

SUPERFICIE = 7,626.391 m²

LOTE-3

LADO EST	PV	RUMBO	DISTANCIA	V	COORDENADAS	
					X	Y
22	23	N 53°07'42.03" W	46.741	24	5,612.1121	5,319.5866
23	24	S 43°44'14.78" W	98.049	25	5,541.2701	5,251.7939
24	22	N 67°51'32.78" E	113.552	23	5,584.0662	5,356.9727

SUPERFICIE = 2,275.032 m²

TITULO: **TOP-BA**
LEVANTAMIENTO DE PLANIMETRIA Y ALTIMETRIA DE UN TERRENO UBICADO EN CADEREYTA JIMENEZ, N.L. PROPIEDAD DEL SR. ARMANDO HINOJOSA

LEVANTO Y CALCULO	ESCALA:	FECHA:
ING. EDDY BARRERA GONZALEZ	1 : 1300	7-SEPT-2004
ALBINO DANIEL FUENTES No. 1757 COL. GARZA NUEVO, DEL. N.L. R.F.C. BAGE650221-4M4 TEL: 8361-36-17	ACOTACION:	DEBIDO:
	METROS	E.B.G.