



ARMORĀN

P L A Z A

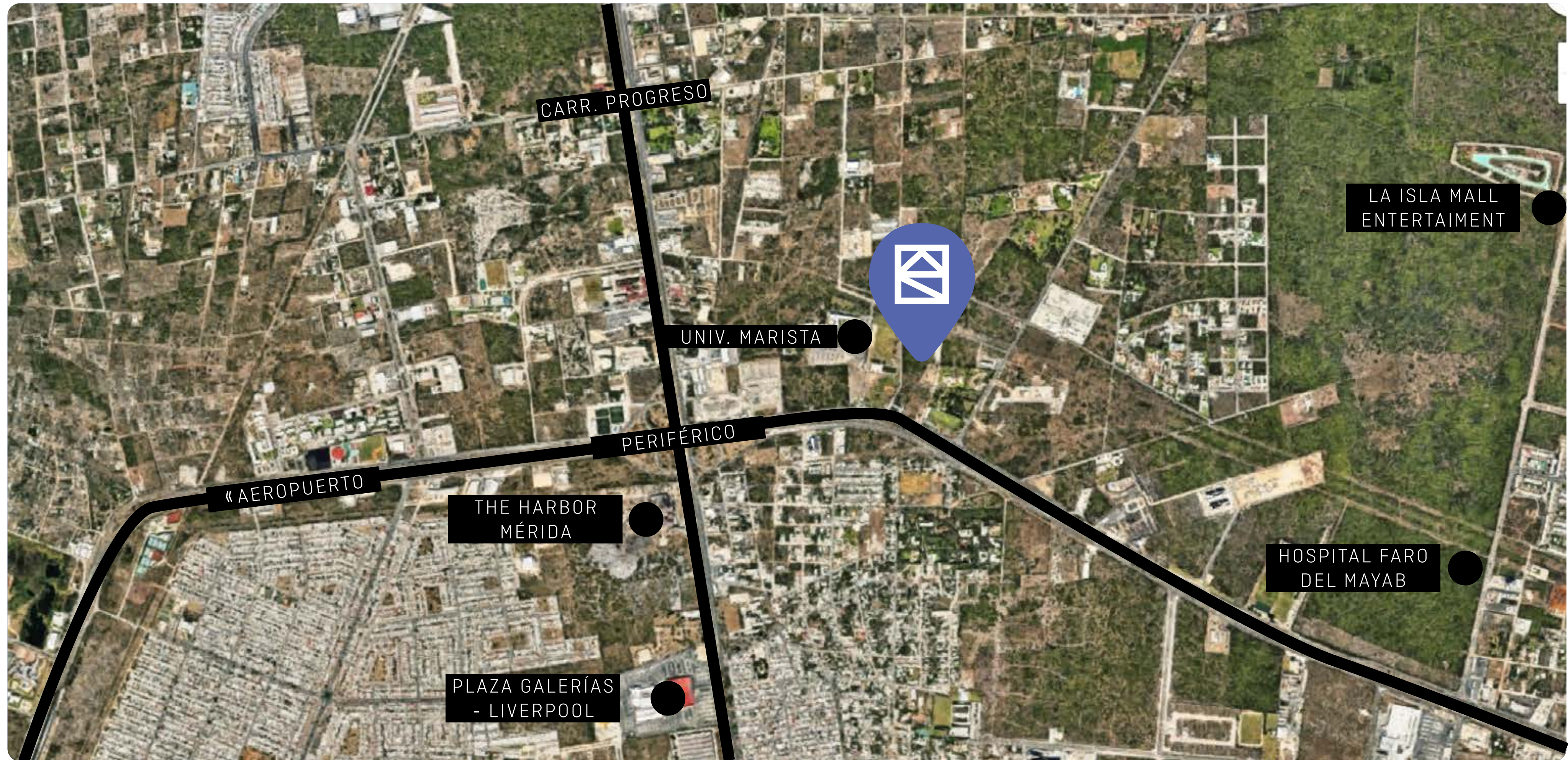
**WHAT YOU NEED,
NOW HERE.**



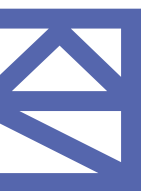
COMPLEJO DE USOS MIXTOS



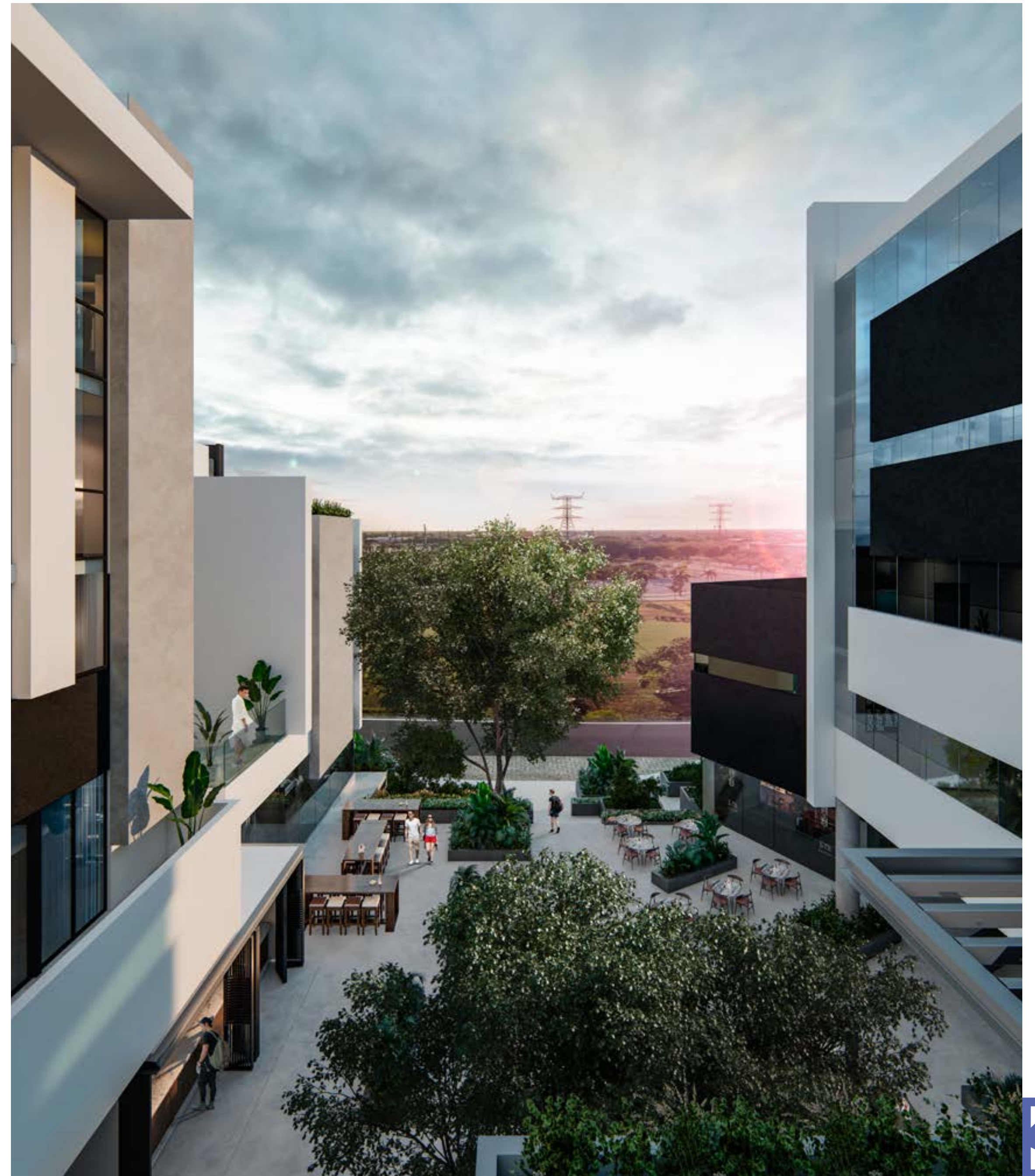
UBICACIÓN



- UNIV. ANÁHUAC MAYAB - 5 MIN.
- YUCATÁN COUNTRY CLUB - 5 MIN.
- AEROPUERTO - 20 MIN.
- PUERTO PROGRESO - 30 MIN.




ARMORÁN
P L A Z A



FACHADA PRINCIPAL

OFICINAS

DEPARTAMENTOS



MASTER PLAN

SEGURIDAD 24/7

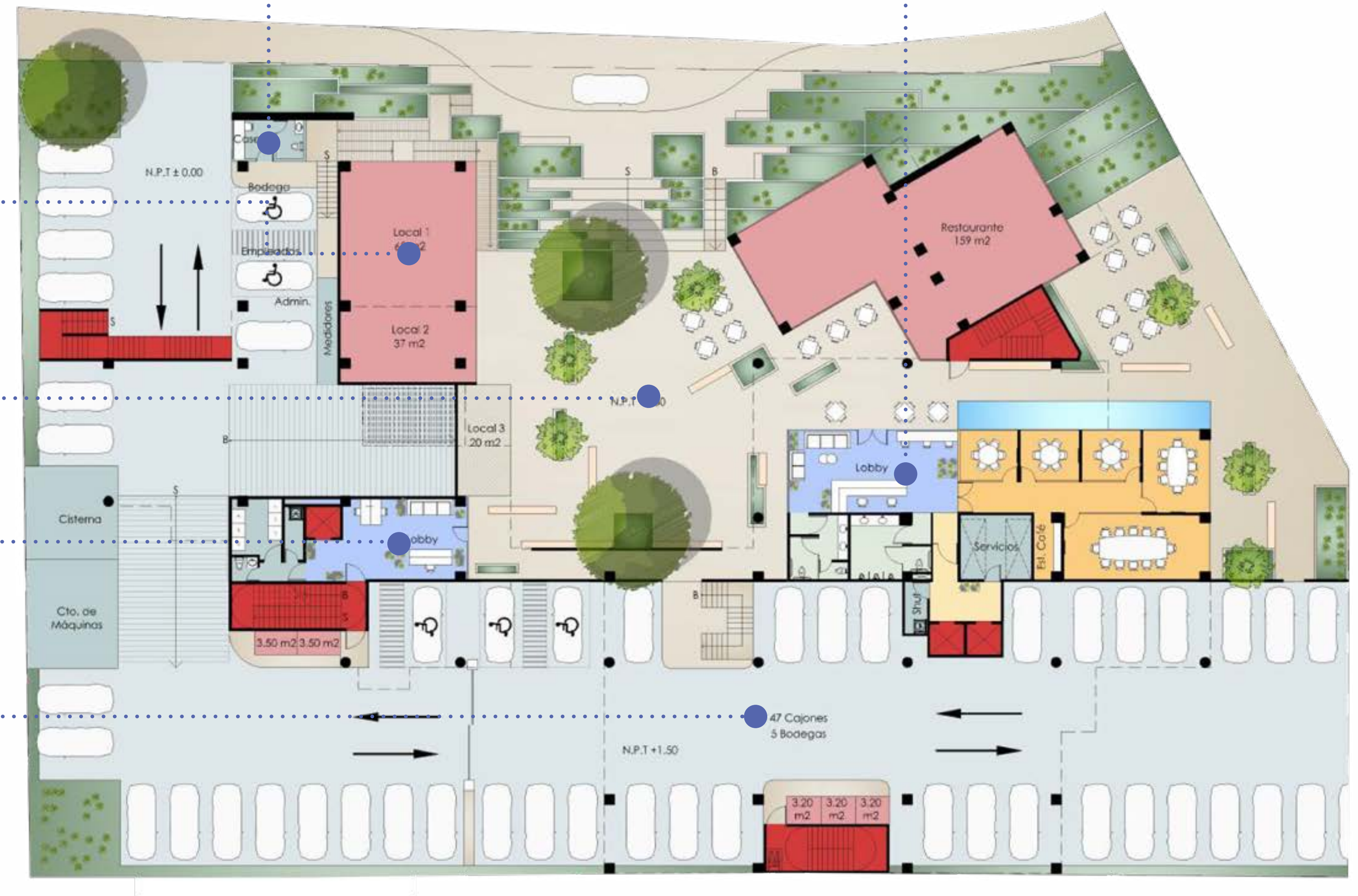
LOBBY OFICINAS

ÁREA COMERCIAL

PLAZA CENTRAL

LOBBY DEPARTAMENTOS

ESTACIONAMIENTO



VISTA ÁREA PRIMERA
ETAPA COMERCIAL



PLAZA CENTRAL



ACCESO PEATONAL



ACCESO NORTE
A PLAZA CENTRAL





DEPARTAMENTOS



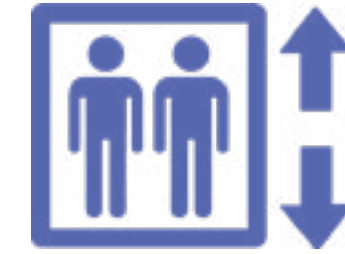
AMENIDADES



LOBBY



LAUNDRY ROOM



ELEVADOR



CCTV:
CIRCUITO CERRADO



WORKING ÁREA



SHOOT DE BASURA



TERRAZA USOS
MÚLTIPLES



ROOFTOP



BAR



POOL

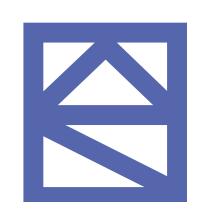


BAR

POOL

ROOF TOP

TERRAZA DE
USOS MÚLTIPLES



LOBBY



ROOF TOP



PLANTAS

NIVEL 1



NIVEL 2



NIVEL 3



NIVEL 4





DEPARTAMENTO 2R- TIPO A

91 M²

INTERIOR - 66.70 M²

TERRAZA TECHADA - 11.43 M²

CAJONES DE PARKING - 12.50 M²





DEPARTAMENTO 2R- TIPO B

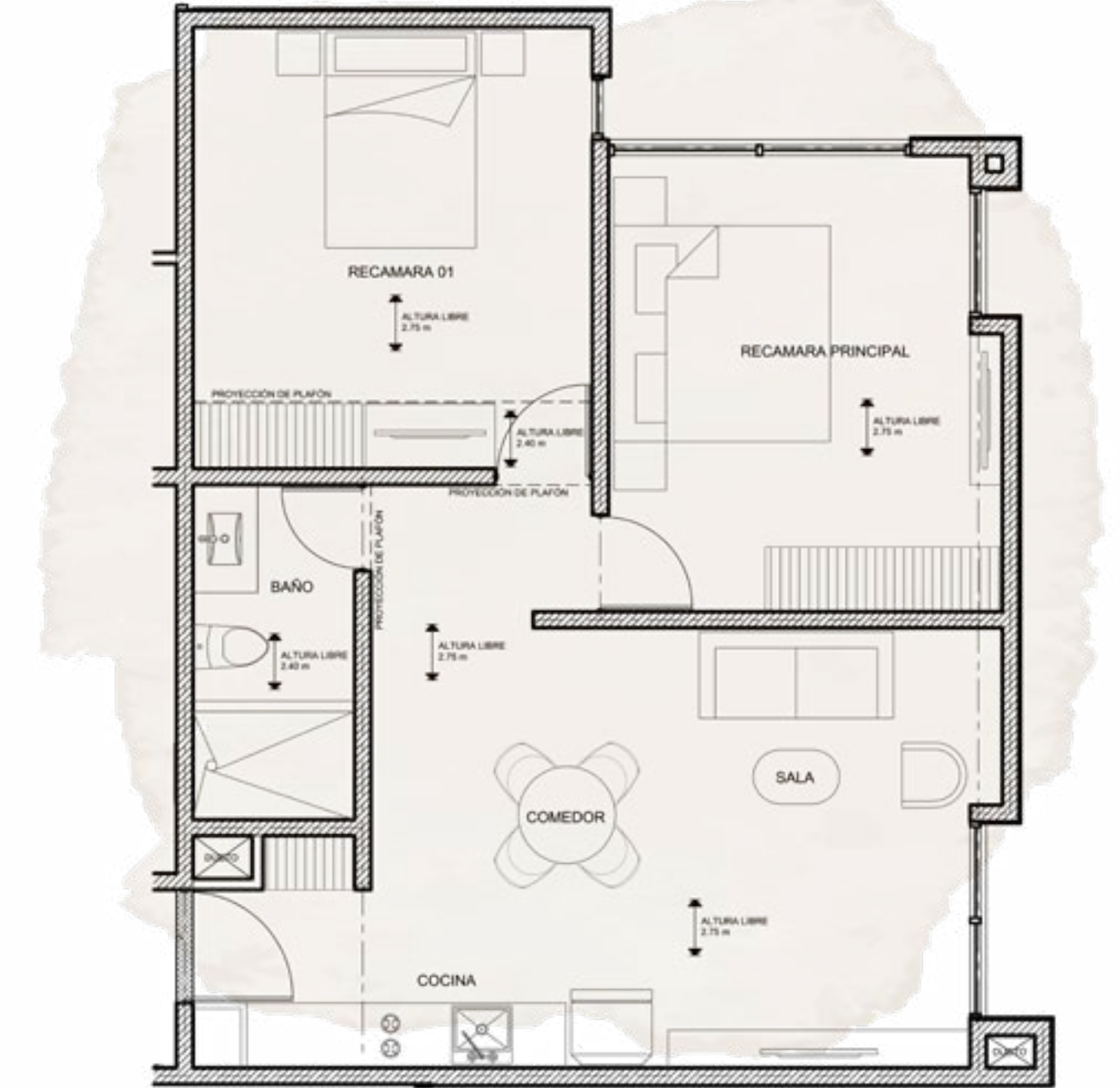
91 M²

INTERIOR - 70.93 M²

TERRAZA TECHADA - 7.53 M²

CAJONES DE PARKING - 12.50 M²





DEPARTAMENTO 2R- TIPO C

84 M²

INTERIOR - 71.17 M²

CAJONES DE PARKING - 12.50 M²





DEPARTAMENTO 2RLO- TIPO D1

108 M²

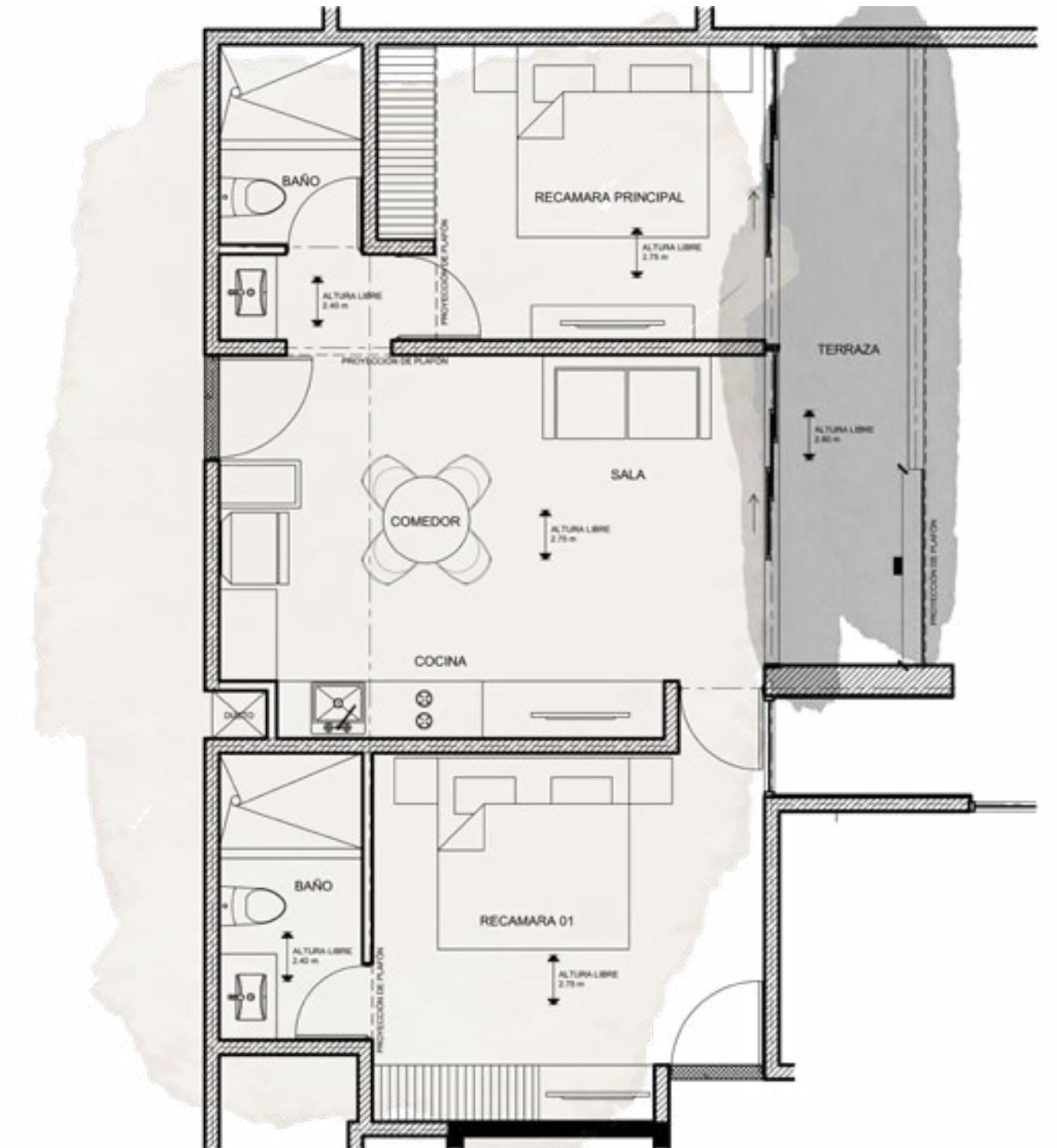
INTERIOR - 71.42 M²

TERRAZA TECHADA - 1.68 M²

TERRAZA INTERIOR - 22.42 M²

CAJONES DE PARKING - 12.50 M²





DEPARTAMENTO 2RLO- TIPO D2

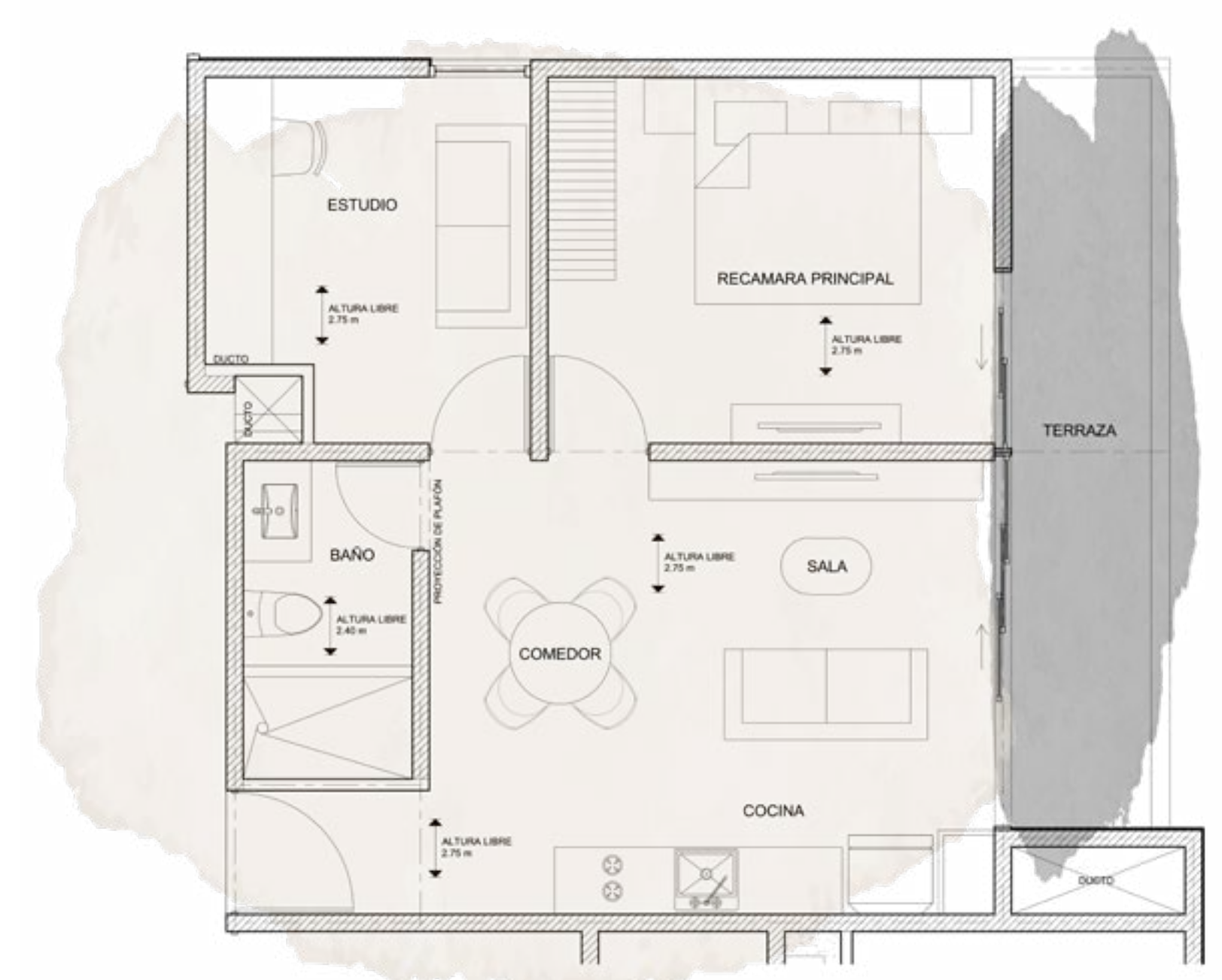
90 M²

INTERIOR - 66.58 M²

TERRAZA INTERIOR - 10.44 M²

CAJONES DE PARKING - 12.50 M²





DEPARTAMENTO 1R1E- TIPO E1

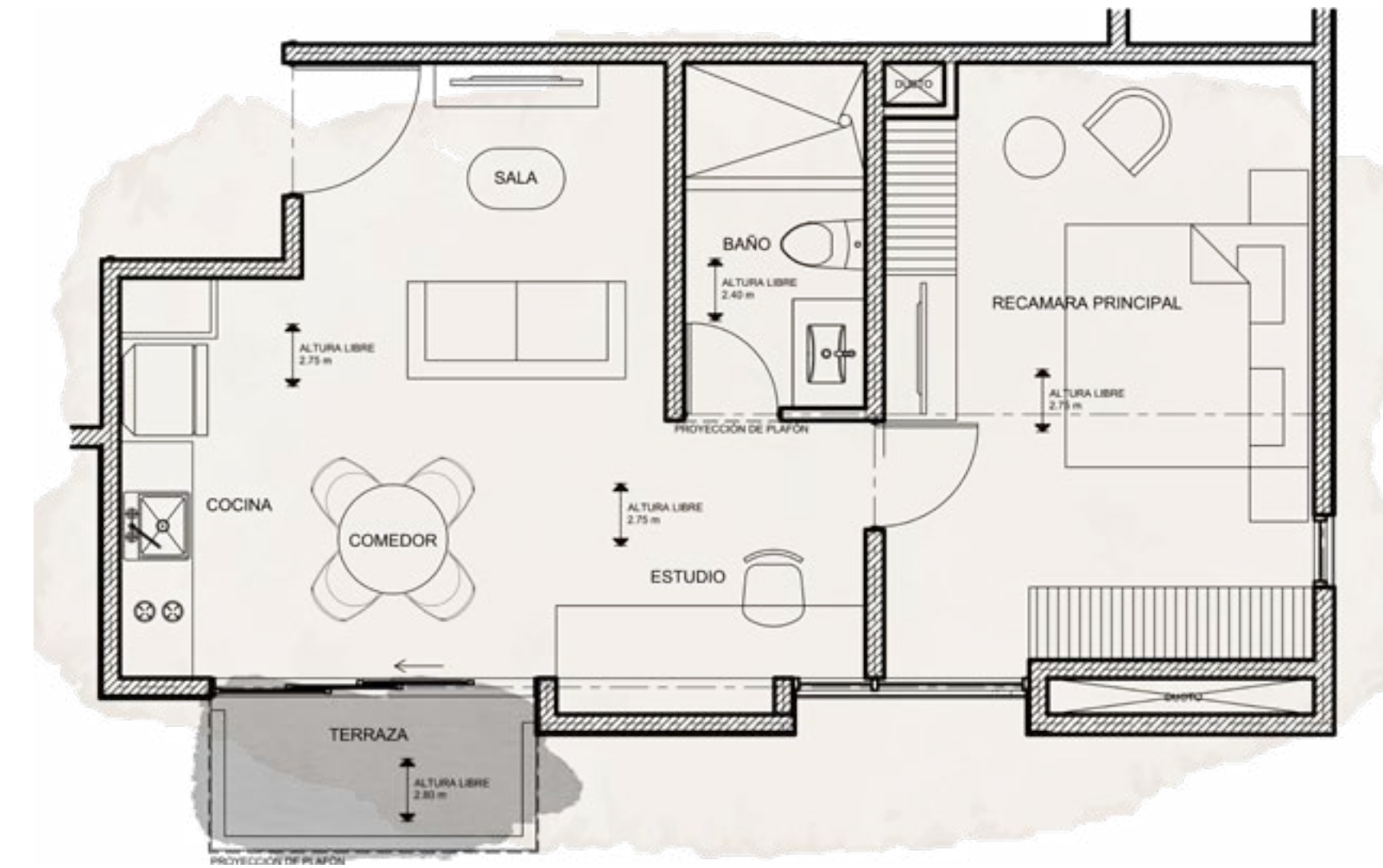
76 M²

INTERIOR - 53.68 M²

TERRAZA INTERIOR - 9.72 M²

CAJONES DE PARKING - 12.50 M²





DEPARTAMENTO 1RHO- TIPO F

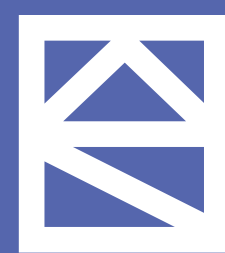
69 M²

INTERIOR - 52.88 M²

TERRAZA TECHADA - 3.36 M²

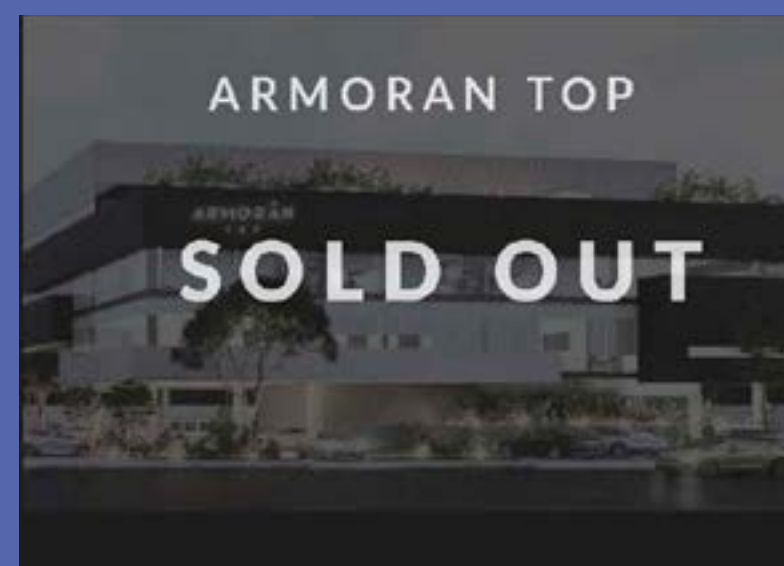
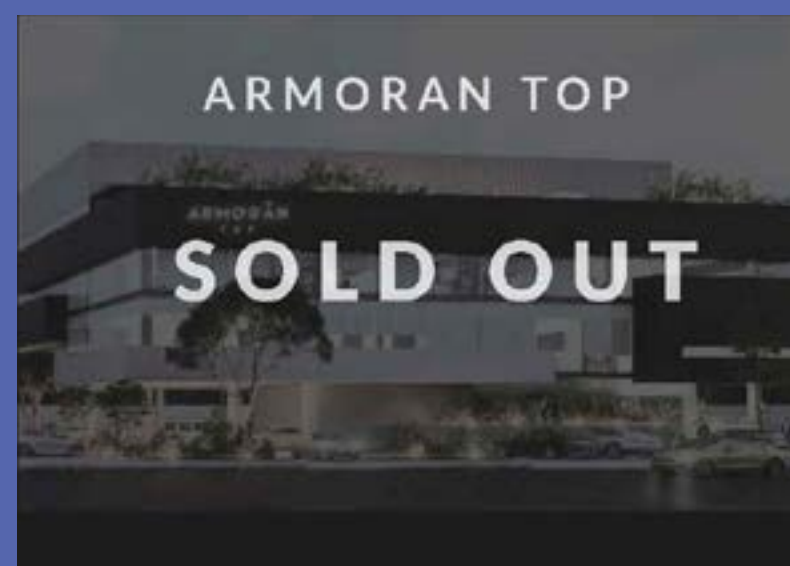
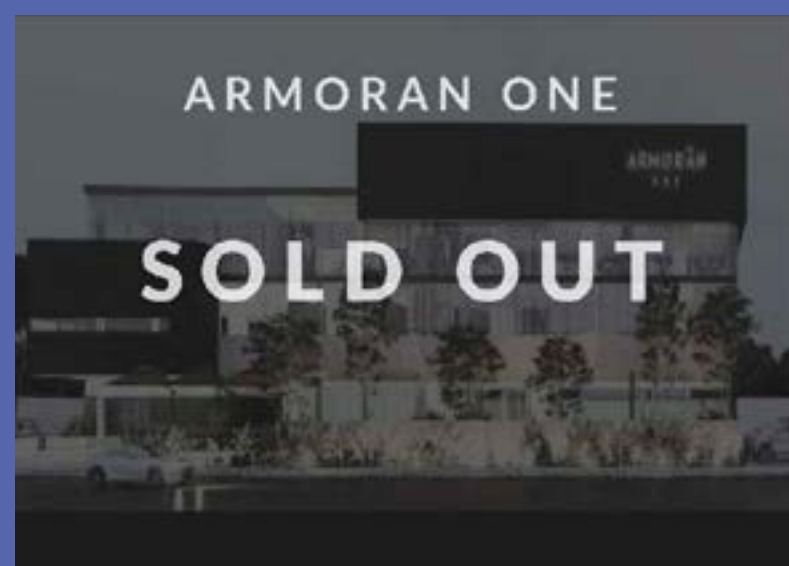
CAJONES DE PARKING - 12.50 M²





ARMORÁN

P L A Z A



DESARROLLADO POR:



DICIEMBRE 2023

COMERCIALIZADO POR:

