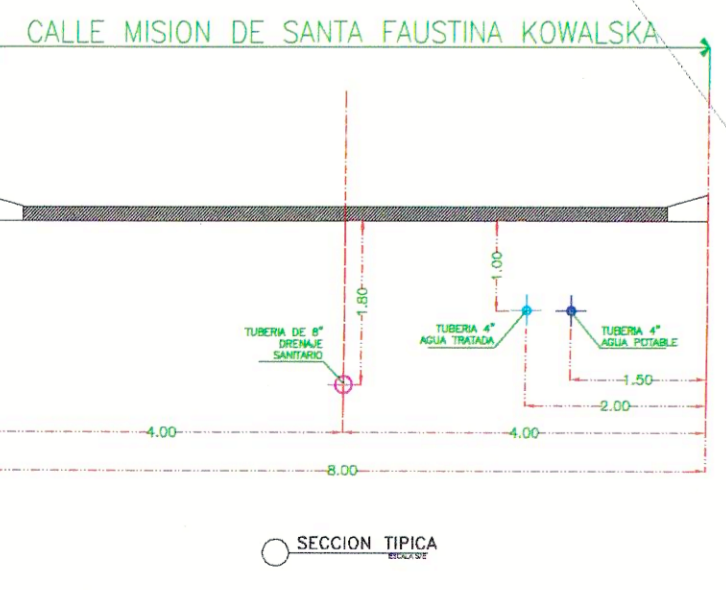
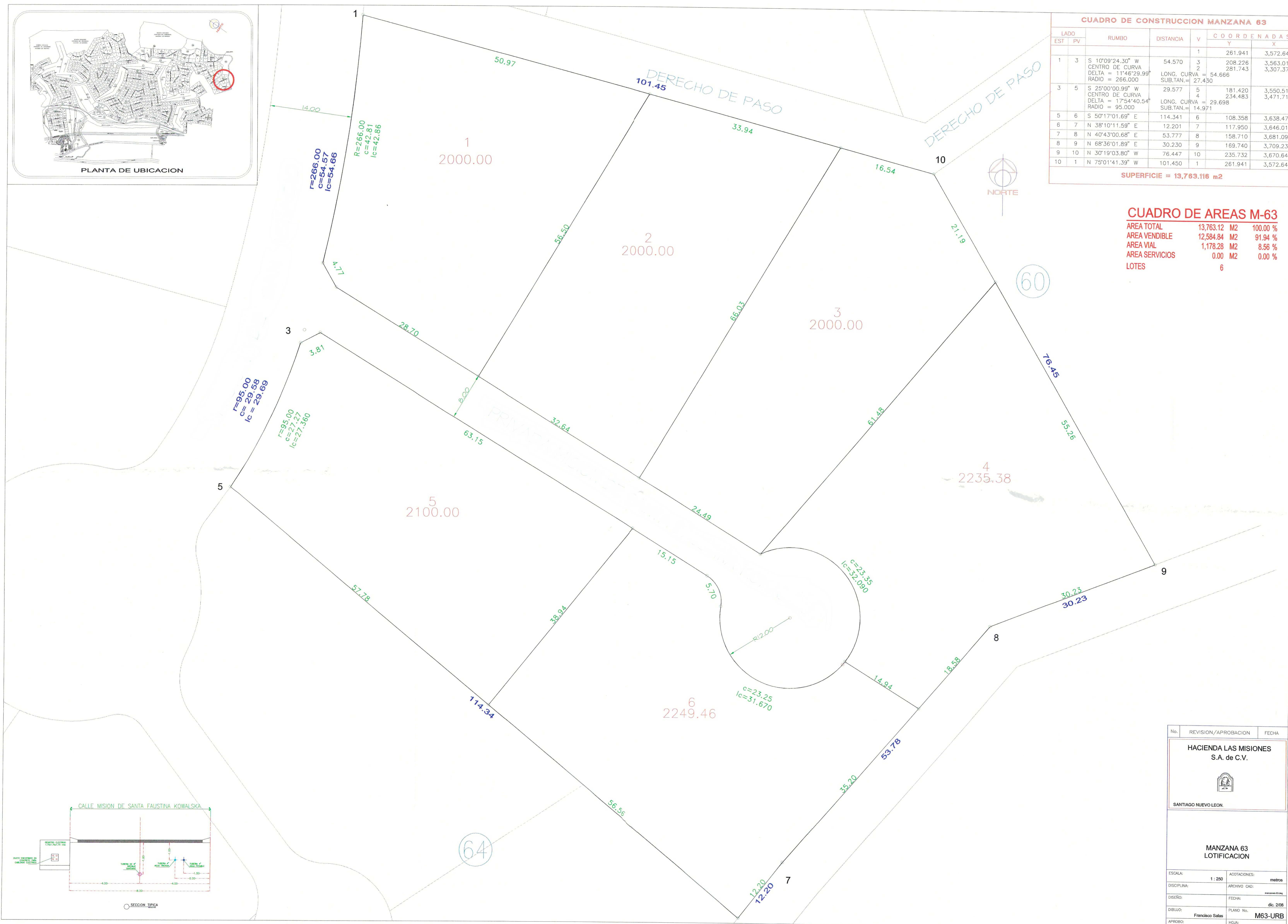


CUADRO DE CONSTRUCCION MANZANA 63							
LADO	EST	PV	RUMBO	DISTANCIA	V	COORDENADAS	
						Y	X
1	3		S 10°09'24.30" W	54.570	3	261.941	3,572.640
			CENTRO DE CURVA		2	208.226	3,563.017
			DELTA = 11°46'29.99"			281.743	3,307.378
			RADIO = 266.000	LONG. CURVA = 54.666			
				SUB.TAN. = 27.430			
3	5		S 25°00'00.99" W	29.577	5	181.420	3,550.517
			CENTRO DE CURVA		4	234.483	3,471.718
			DELTA = 17°54'40.54"	LONG. CURVA = 29.698			
			RADIO = 95.000	SUB.TAN. = 14.971			
5	6		S 50°17'01.69" E	114.341	6	108.358	3,638.470
6	7		N 38°10'11.59" E	12.201	7	117.950	3,646.010
7	8		N 40°43'00.68" E	53.777	8	158.710	3,681.090
8	9		N 68°36'01.89" E	30.230	9	169.740	3,709.236
9	10		N 30°19'03.80" W	76.447	10	235.732	3,670.646
10	1		N 75°01'41.39" W	101.450	1	261.941	3,572.640

SUPERFICIE = 13,763.116 m<sup>2</sup>

**CUADRO DE AREAS M-63**

AREA TOTAL	13,763.12 M <sup>2</sup>	100.00 %
AREA VENDIBLE	12,584.84 M <sup>2</sup>	91.94 %
AREA VIAL	1,178.28 M <sup>2</sup>	8.56 %
AREA SERVICIOS	0.00 M <sup>2</sup>	0.00 %
LOTES	6	



No.	REVISION/APROBACION	FECHA
<b>HACIENDA LAS MISIONES S.A. de C.V.</b>		
SANTIAGO NUEVO LEON.		
<b>MANZANA 63 LOTIFICACION</b>		
ESCALA:	1:250	ACOTACIONES: metros
DISCIPLINA:	ARCHIVO CAD:	
DISEÑO:	FECHA:	dic. 2008
DIBUJO:	Francisco Salas	PLANO No. M63-URB
APROBADO:	Ing. G. Baldo	HOJA: 1 DE 1