

# CALIZA



**BEACH SANCTUARY**

CONDOS IN  
SAN CRISANTO

[refugiocaliza.mx](http://refugiocaliza.mx)

**TRACSA**  
*Desarrollos*



*San Crisanto*

**WE ARE THE SAND IN THE WIND**

Find your destiny in the sea breeze




All Pictures shown are for illustration purpose only. Actual product may slightly vary.

# CALIZA

Caliza Beach Condos is a development that will have 72 apartments distributed in 2 towers. Each tower has 3 penthouses, more than 15 amenities, 80 meters of beachfront and 4 commercial premises designed for your well-being.





**80 METERS OF  
BEACHFRONT**

# YOUR HEART IS NOT ALONE



A place where the skies and the tranquility enter your home. Aesthetics are mixed with practicality to create a new concept that evokes the Mayan architecture due to its symmetry, axiality and the use of terraces.



## WELCOME <sup>TO</sup> THE YUCATECAN PARADISE

Famous for its beaches and Mayan ruins; where modernity and ancestry converge in time between its towns, cities, and ports. In Merida, time does not exist, but it advances. People pursue the Yucatecan dream for the mysteries and unchanging affability of its people, which provides asylum for the exhausted in spirit. Being the “Ciudad Blanca” (White City), the first step for comfort for the traveler who treads on these lands.

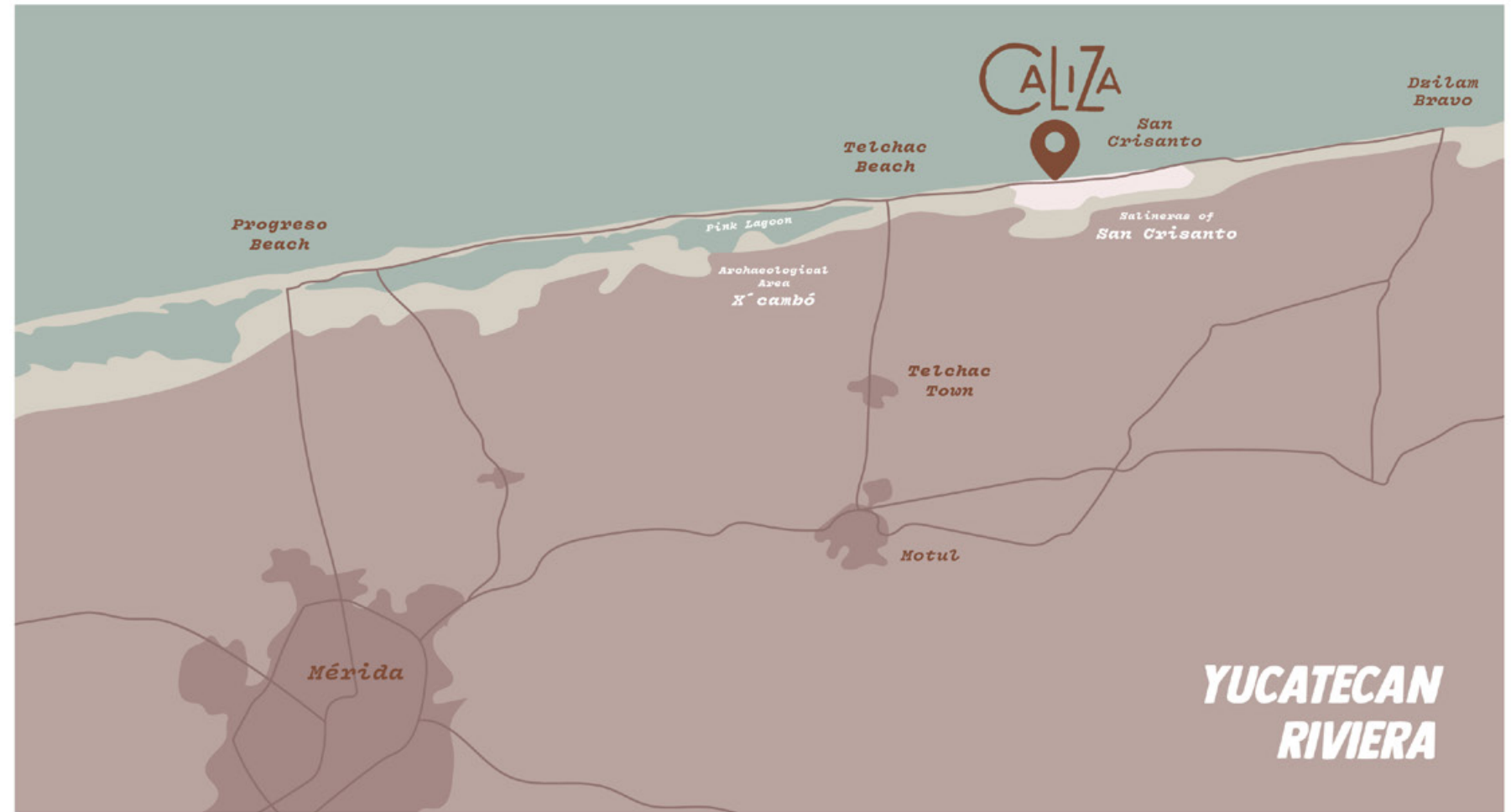




**SAN CRISANTO**  
YUCATÁN

## BEACH SANCTUARY

Visit the white sands and crystal clear waters of the Yucatecan Riviera.



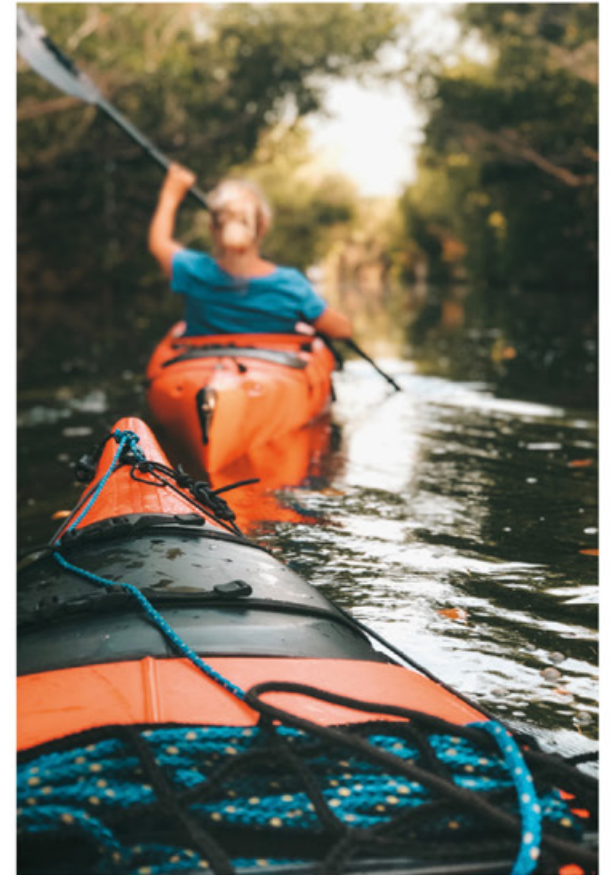
Visit the white sands and crystal clear waters of the Yucatecan Riviera. San Crisanto is one of the 11 municipalities that belong to this Riviera and to a more exclusive area known as Costa Esmeralda. The area is located 60 minutes from Mérida, 25 minutes from X'cambó and 10 minutes from Telchac Puerto.

# SAN CRISANTO

It's framed by divine landscapes and gives the eye a beautiful blue-green color. The harmony of the place invites you to spend long periods of time to merge with the stability and the calm of this beautiful location.

- *More than 25 cenotes (deep water caverns)*
- *Springs*
- *Pink salt flats*
- *Exotic flora and fauna*





Some of the activities you can do  
in San Crisanto:

- Explore X' Cambó*
- Fishing*
- Kayaking*
- Kitesurfing*



I WOKE  
UP ON MY WAY  
TO THE PROMISED  
SANCTUARY

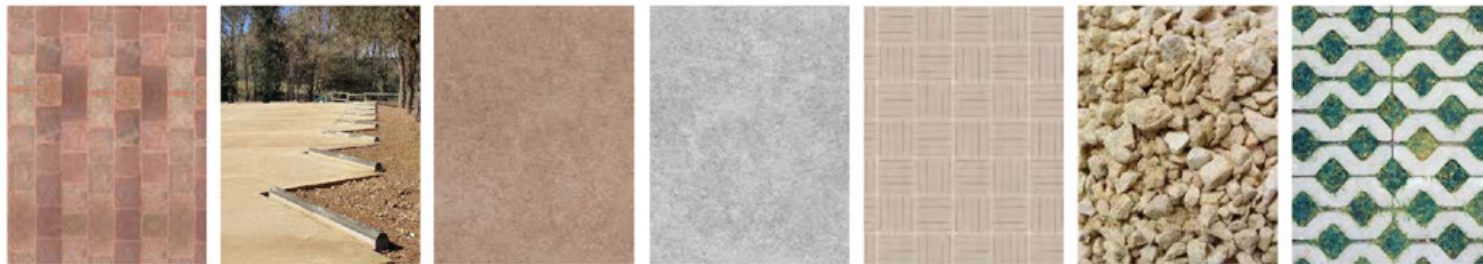
Our mission is to create spaces that reflect the soul of our community. Unique, humane, ever-changing spaces that respect the environment, the people and the culture. We are the refuge of the tired traveler, the shelter on the coast, the ideal of calm, the serene hideaway filled with sand and sea sun.

FIND YOURSELF IN THE SUNSETS

# YUCATECAN SOUL

We are inspired by the soul of Yucatan to offer a space that celebrates our own living nature, origin and ancestral memory. We merge the traditional ocher colors of colonial architecture with the principles of symmetry, axiality, high ceilings, esplanades typical of Mayan architecture and use of terraces. As a result each residence is gifted with views of the sea.

*landscape*



*buildings*



## INSPIRING DESIGN

The space we offer is fresh, cozy and harmonious. Our design is art, it blends interior with exterior. Caliza's finishes reinforce the monolithic character of the building and aids the natural aging of

the architecture. The pigments of the concrete will be in pink tones, it goes beyond the aesthetic function, it seeks to recall the texture of old buildings through rough, irregular and rough surfaces.







All Pictures shown are for illustration purpose only. Actual product may slightly vary.

## ESSENCE <sup>IN</sup> BALANCE

The buildings blend in with the landscape, our design is friendly to the environment by housing coconut palms and allowing green areas to grow freely around the

construction; for example, the 40m of dunes will not be touched, as a sign of respect for the ecosystem. It is possible to vibrate in balance with nature.





Isla de  
Fogatas

All Pictures shown are for illustration purpose only. Actual product may slightly vary.

**THE SOUND OF THE WAVES**



## BEACH

CALIZA will have 80m of beachfront and Geotube Technology to protect the coast from erosion, promoting the growth of the beach and dissipating the waves. The virgin beach with green palm trees, white sand, and emerald water invites you to bathe and enjoy the sun in our private beach with palapas and chaise lounges.

You can have a refreshing drink while enjoying the sun and the breeze, without worries. Relax and breathe deeply the tranquility of Caliza.



An aerial photograph of a tropical landscape. The foreground and middle ground are filled with a dense canopy of palm trees. In the background, there's a mix of greenery and some buildings, possibly a residential area. The sky is a vibrant turquoise color with a few wispy clouds. The overall scene is bright and sunny, with a warm, golden light filtering through the trees.

**SOFT BREEZE  
CLEAR  
WIND**

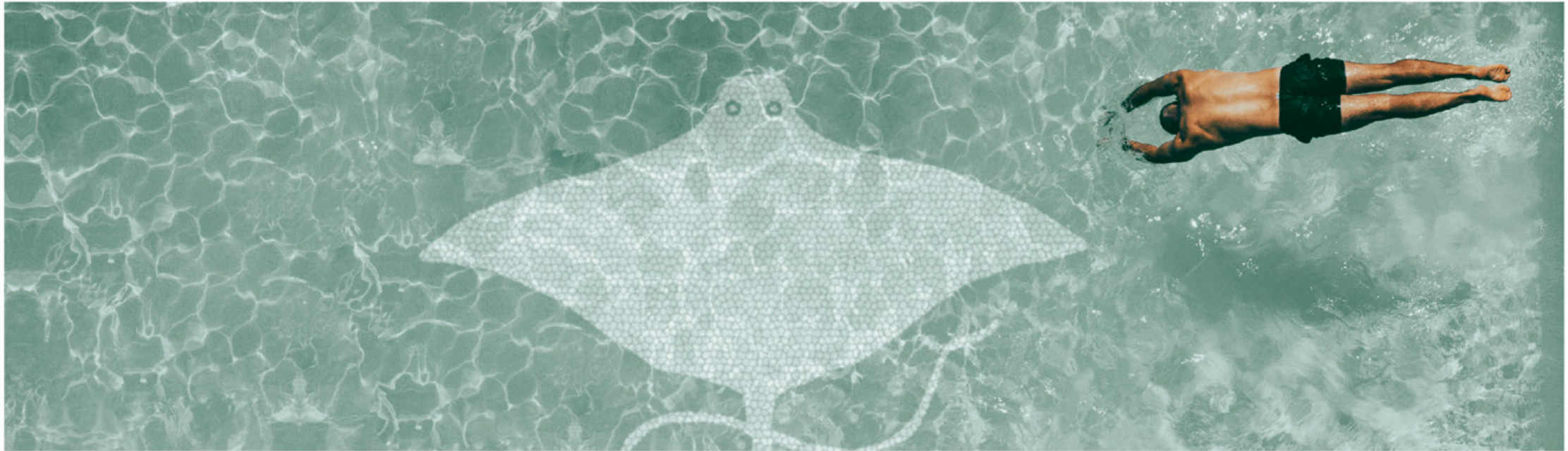


In Caliza we will have renewable sources, like solar panels to power the amenities and a wastewater treatment plant.

**FILL YOURSELF WITH ENERGY**

## FAMILY POOL

Thanks to the design of the complex, the family pool is divided into an outdoor and a roofed area, designed for your enjoyment and pleasant swim.







## ISLES OF GRILLS, BONFIRE, AND MEDITATION



Near the family pool are the islands of grills and bonfires. Create a place of privacy and community, filled with old and new memories as you roast a steak or marshmallows over the fire.

## YOGA TERRACE

Reach the nirvana with the melody of birds at dawn. Meditate, exercise, connect with your inner self while enjoying a fabulous view of the sea.



FIND YOURSELF IN THE  
SUNSETS

# Terraza de Yoga



All Pictures shown are for illustration purpose only. Actual product may slightly vary.

## ROOFTOP, POOL, GAZEBO AND BAR

Finish the day watching the reddish sunset taking a dip and sipping a cocktail on the terrace of the building. Such an enchanting and unforgettable sight. Pure poetry.





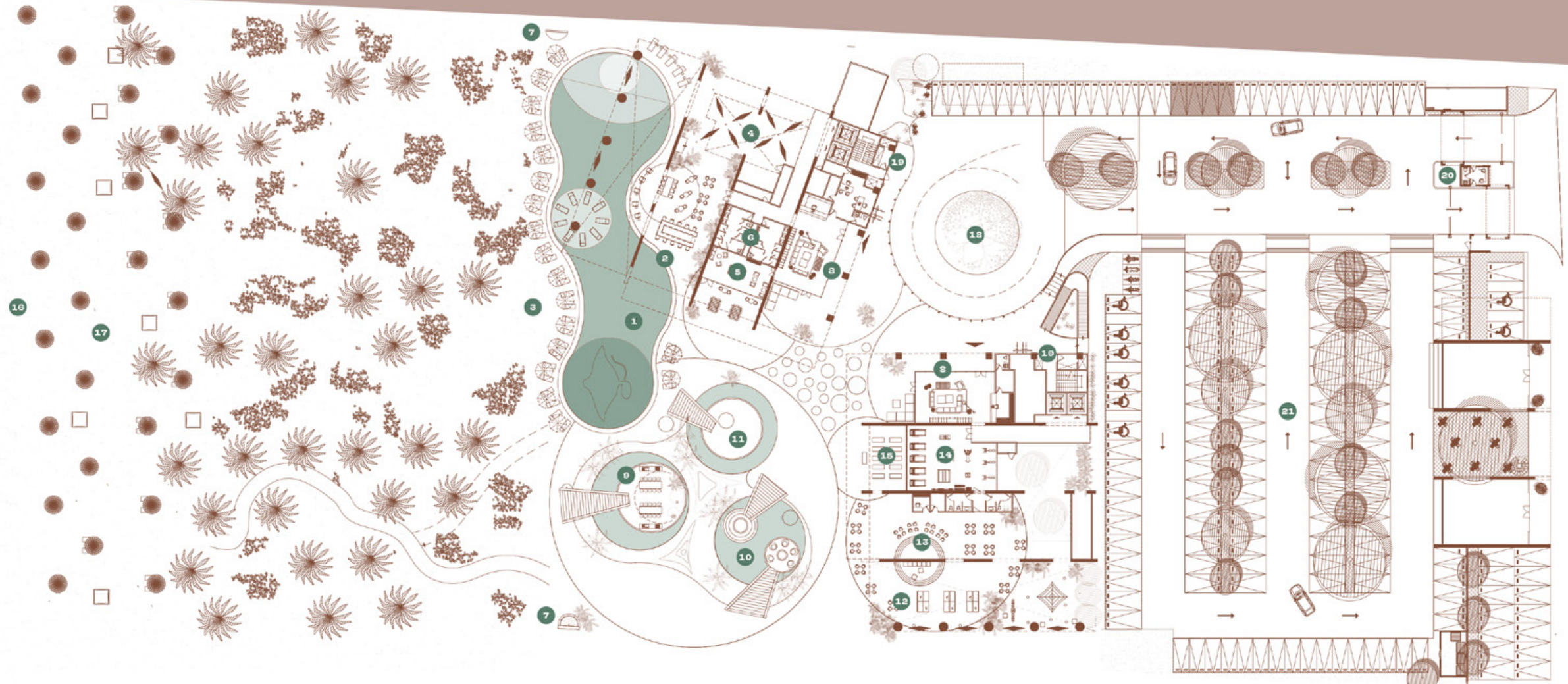
# AMENITIES

1. FAMILY POOL
2. POOL BAR
3. SOLARIUM
4. HAMMOCK GARDEN

5. ADULT ROOM
6. WASHROOMS
7. SHOWERS
8. LOBBY
9. GRILL ISLE

10. FIREPIT ISLE
11. MEDITATION ISLE
12. GAME TERRACE  
AND PLAYROOM
13. MULTI-PURPOSE ROOM
14. GYM

15. YOGA TERRACE
16. 80 METRES OF BEACHFRONT
17. BEACH BEDS
18. MOTOR LOBBY
19. TRASH CHUTE
20. SECURITY BOOTH
21. PARKIN LOT





- // EXTENSIVE GREEN AREAS
- // COMMERCIAL ZONE
- // CCTV
- // SOLAR CELLS FOR COMMON AREAS
- // CONCIERGE
- // WATERHOLE
- // WATER TREATMENT PLANT
- // SECURITY 24HRS
- // ASSIGNED PARKING LOTS

## EMERALD COAST



- 22. PANORAMIC POOL
- 23. PANORAMIC BAR





# VIEWS TOWARDS THE OCEAN

In Caliza, the towers open towards the sea, to guarantee that 100% of the condos have direct visual contact to the ocean through large terraces.

All Pictures shown are for illustration purpose only. Actual product may slightly vary.



Condo  
**A1**

From level 1 to 7  
1 Bedroom  
1.5 Bathroom  
Pool

Interior area	1138.82 ft <sup>2</sup>
Terrace	293.85 ft <sup>2</sup>
Storage room	38.75 ft <sup>2</sup>
Total	1471.42 ft <sup>2</sup>



- TERRACE
- POOL
- EXTERIOR KITCHEN
- INTERIOR KITCHEN
- PANTRY
- DINING ROOM
- LIVING ROOM
- LAUNDRY ROOM
- 1 BATHROOM
- WALKING CLOSET
- 1 BEDROOM
- STORAGE ROOM
- GUEST BATHROOM



All Pictures shown are for illustration purpose only. Actual product may slightly vary.

Condo  
**B1**

From level 1 to 7  
2 Bedrooms  
2 Bathrooms

Interior area	1322.88 ft <sup>2</sup>
Terrace	321.84 ft <sup>2</sup>
Storage room	34.44 ft <sup>2</sup>
Total	1679.17 ft <sup>2</sup>



- TERRACE
- PLUNGE POOL
- EXTERIOR KITCHEN
- INTERIOR KITCHEN
- PANTRY
- DINING ROOM
- LIVING ROOM
- LAUNDRY ROOM
- 2 BATHROOM
- WALKING CLOSET
- 2 BEDROOM
- STORAGE ROOM



All Pictures shown are for illustration purpose only. Actual product may slightly vary.

Condo  
**B2**

From level 1 to 8  
2 Bedrooms  
2.5 Bathrooms  
Family room

Interior area	1532.78 ft <sup>2</sup>
Terrace	321.84 ft <sup>2</sup>
Storage room	33.36 ft <sup>2</sup>
Total	1887.98 ft <sup>2</sup>



*Palma Tower*

- TERRACE
- PLUNGE POOL
- EXTERIOR KITCHEN
- INTERIOR KITCHEN
- PANTRY
- DINING ROOM
- LIVING ROOM
- LAUNDRY ROOM
- 2 BATHROOM
- WALKING CLOSET
- 2 BEDROOM
- FAMILY ROOM
- STORAGE ROOM

*San Crisanto, Yuc.*

Condo  
**B3**

From level 2 to 7  
2 Bedrooms  
2 Bathrooms  
Pool

Interior area	1382.08 ft <sup>2</sup>
Terrace	303.54 ft <sup>2</sup>
Storage room	33.36 ft <sup>2</sup>
Total	1718.99 ft <sup>2</sup>



- TERRACE
- POOL
- EXTERIOR KITCHEN
- INTERIOR KITCHEN
- PANTRY
- DINING ROOM
- LIVING ROOM
- LAUNDRY ROOM
- 2 BATHROOM
- WALKING CLOSET
- 2 BEDROOM
- STORAGE ROOM

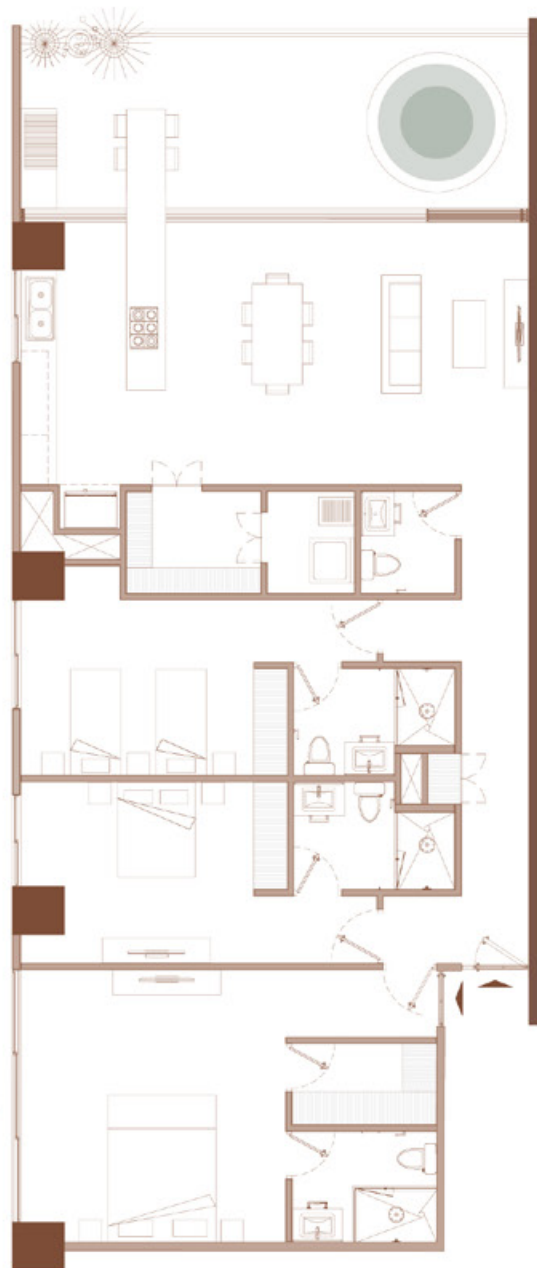
# ADVENTURE AT EVERY DUSK

Pools with sea  
view.

Condo  
**C1**

From level 1 to 9  
2 Bedrooms  
1 Bedroom lock off  
3.5 Bathrooms  
Pool

Interior area	1800.80	ft <sup>2</sup>
Terrace	335.83	ft <sup>2</sup>
Storage room	36.59	ft <sup>2</sup>
Total	2173.23	ft <sup>2</sup>



- TERRACE
- PLUNGE POOL
- EXTERIOR KITCHEN
- INTERIOR KITCHEN
- PANTRY
- DINING ROOM
- LIVING ROOM
- LAUNDRY ROOM
- 3.5 BATHROOMS
- WALKING CLOSET
- 2 BEDROOM
- STORAGE ROOM
- ½ BATH
- 1 BEDROOM LOCK OFF

BEDROOM  
LOCK OFF →



Condo

# PH AGUAMARINA

From level 10 to 11  
 2 Bedrooms  
 2.5 Bathrooms  
 Pool

Interior area	1463.89 ft <sup>2</sup>
Terrace	321.84 ft <sup>2</sup>
Storage room	34.44 ft <sup>2</sup>
Roof garden	771.77 ft <sup>2</sup>
Total	2591.94 ft <sup>2</sup>



Palma Tower

- TERRACE
- POOL
- EXTERIOR KITCHEN
- INTERIOR KITCHEN
- PANTRY
- DINING ROOM
- LIVING ROOM
- LAUNDRY ROOM
- 2 BATHROOMS
- WALKING CLOSET
- 2 BEDROOM
- STORAGE ROOM



- POOL
- ROOF GARDEN
- ½ BATH
- EXTERIOR SHOWER

San Crisanto, Yuc.

Condo  
**PH  
CALIZA**

From level 9 to 10

2 Bedrooms

2.5 Bathrooms

Pool

Family room

Roof garden

Interior area	1765.28 ft <sup>2</sup>
Terrace	666.28 ft <sup>2</sup>
Storage room	32.29 ft <sup>2</sup>
Roof garden	822.36 ft <sup>2</sup>
Total	3286.22 ft <sup>2</sup>



- TERRACE
- POOL
- EXTERIOR KITCHEN
- INTERIOR KITCHEN
- PANTRY
- DINING ROOM
- LIVING ROOM
- LAUNDRY ROOM
- 2 BATHROOMS
- WALKING CLOSET
- 2 BEDROOM
- STORAGE ROOM
- FAMILY ROOM



- POOL
- ROOF GARDEN
- ½ BATH
- EXTERIOR SHOWER

Condo

# PH ESMERALDA

From level 8 to 9  
 2 Bedrooms  
 1 Bedroom lock off  
 3 Bathrooms and 2 half baths  
 Pool  
 Roof garden

Interior area	1931.04 ft <sup>2</sup>
Terrace	335.83 ft <sup>2</sup>
Storage room	37.67 ft <sup>2</sup>
Roof garden	856.80 ft <sup>2</sup>
Total	3161.36 ft <sup>2</sup>



Edificio Palma

TERRACE  
 POOL  
 EXTERIOR KITCHEN  
 INTERIOR KITCHEN  
 PANTRY  
 DINING ROOM  
 LIVING ROOM  
 LAUNDRY ROOM  
 3 BATHROOMS  
 WALKING CLOSET  
 2 BEDROOM  
 1 BEDROOM LOCK OFF  
 STORAGE ROOM  
 HALF BATH

BEDROOM  
 LOCK OFF



San Crisanto, Yuc.

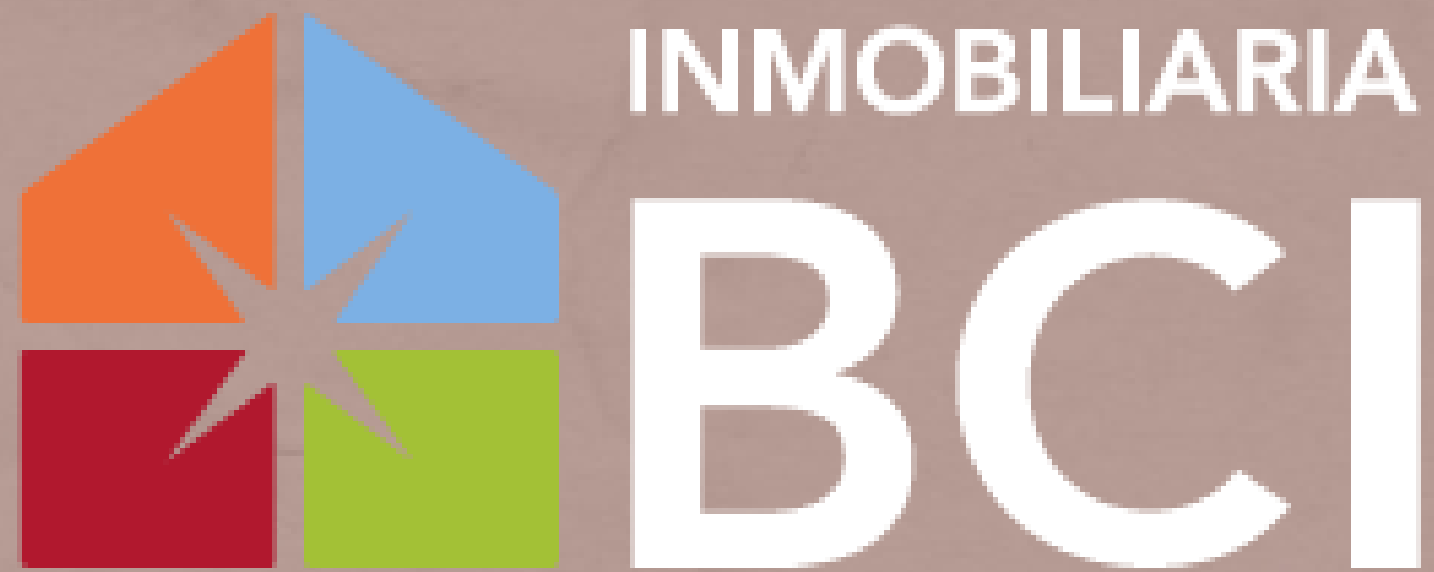
**FIND YOURSELF IN  
THE SUNSETS**





All Pictures shown are for illustration purpose only. Actual product may slightly vary.





Acércate a los expertos.

# Call us

**Oficina Tel: 9999441300**

**Cel: 9991633310**

**Cel: 9991633302**

**Correo: [contacto@grupobci.com](mailto:contacto@grupobci.com)**

