

A modern, multi-story apartment building with a grid-like facade of concrete columns and horizontal beams. Each floor has a balcony with a dark metal railing. The balconies are filled with various green plants, including ferns and leafy herbs, creating a lush, vertical garden effect. The building is set against a clear blue sky.

# Chapultepec 430

by JS<sup>a</sup>

# Plantas

The background features a repeating pattern of stylized plant motifs. The left side of the image is dominated by a dark brown pattern, while the right side is a vibrant orange. The motifs consist of vertical stems with multiple arching, leaf-like structures that resemble a fan or a stylized plant branch. The overall effect is a rich, textured background that complements the central text.

# Chapultepec 430

by JS<sup>a</sup>

## Planta tipo



# Tipologías

The background features a repeating pattern of overlapping, stylized arches. The pattern is split vertically: the left side is rendered in a dark brown color, and the right side is rendered in a vibrant orange color. The arches are arranged in a way that they appear to be part of a larger, continuous structure, creating a sense of depth and rhythm.



# Chapultepec 430

by JS<sup>a</sup>



Estancia /comedor



Cocina



2 Recámaras



1 Baño



Terraza

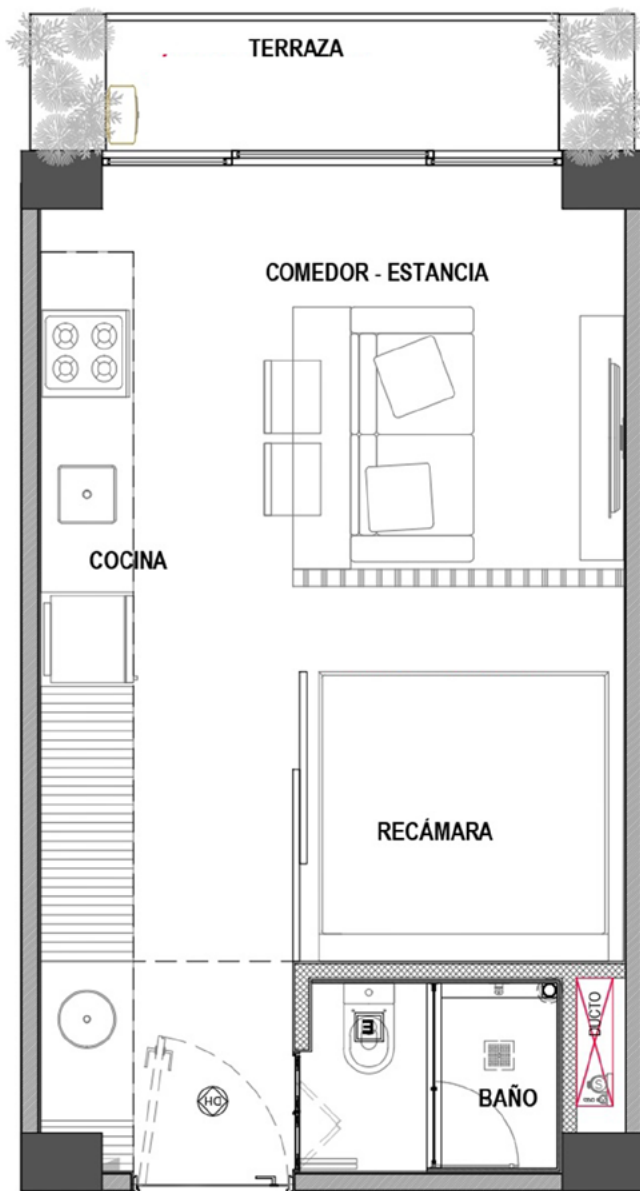
Área total:  
**70.29 m<sup>2</sup>**

Interior:  
**66.29 m<sup>2</sup>**

Exterior:  
**4 m<sup>2</sup>**

Niveles:  
**2 - 10**





# Chapultepec 430

by JS<sup>a</sup>



Estancia/comedor



Cocina



1 Recámara



1 Baño



Terraza



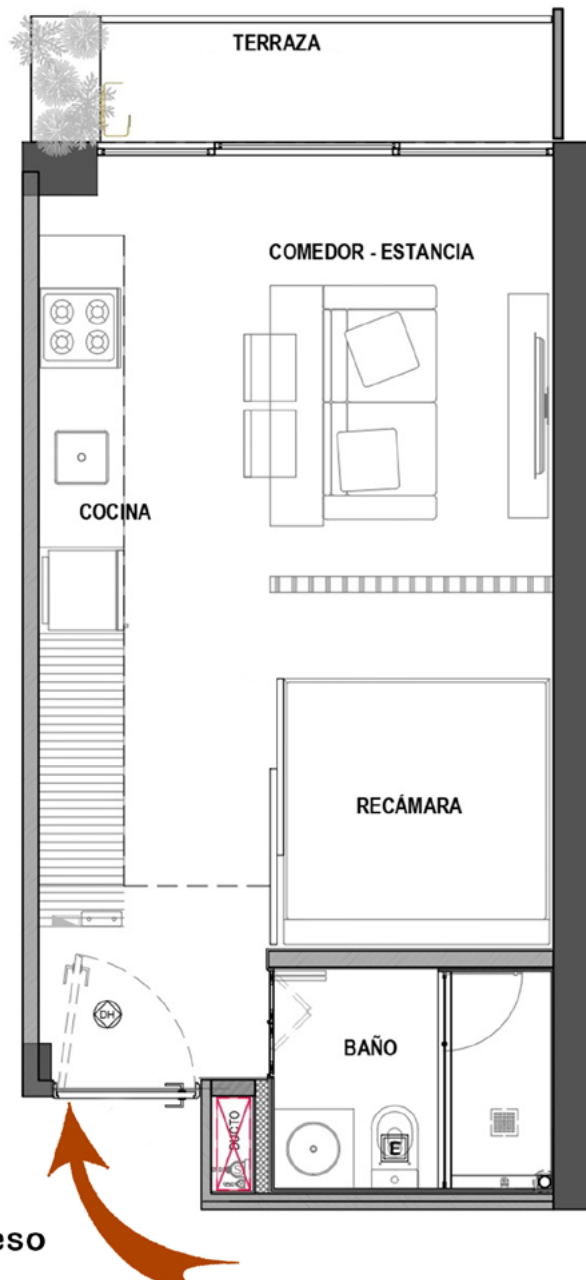
Área total:  
**33.94 m<sup>2</sup>**

Interior:  
**29.76 m<sup>2</sup>**

Exterior:  
**4.18 m<sup>2</sup>**

Niveles:  
**2 - 10**

**S1**



# Chapultepec 430

by JS<sup>a</sup>



Estancia/comedor



Cocina



1 Recámara



1 Baño



Terraza

Acceso

Área total:  
**36.30 m<sup>2</sup>**

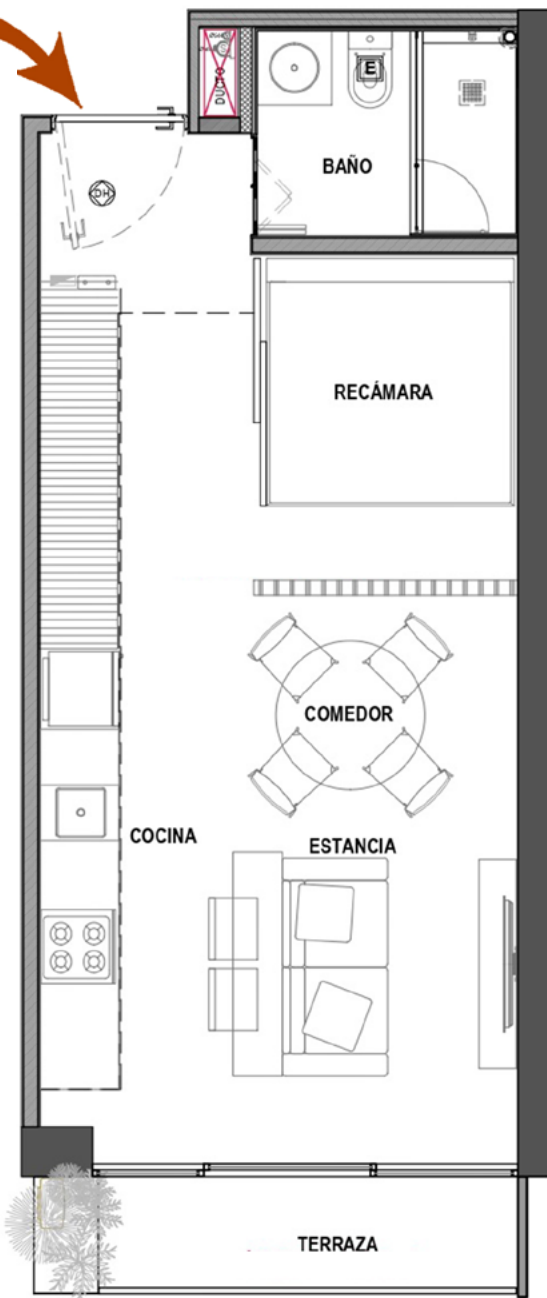
Interior:  
**32.30 m<sup>2</sup>**

Exterior:  
**4 m<sup>2</sup>**

Niveles:  
**2 - 10**

**S2**

Acceso



# Chapultepec 430

by JS<sup>a</sup>



Estancia/comedor



Cocina



1 Recámara



1 Baño



Terraza

Área total:  
**39.48 m<sup>2</sup>**

Interior:  
**35.48 m<sup>2</sup>**

Exterior:  
**4 m<sup>2</sup>**

Niveles:  
**2 - 10**

**S3**



Acceso



# Chapultepec 430

by JS<sup>a</sup>



Estancia/comedor



Cocina



1 Recámara



1 Baño



Terraza

Área total:  
39.65 m<sup>2</sup>

Interior:  
35.48 m<sup>2</sup>

Exterior:  
4.17 m<sup>2</sup>

Niveles:  
2 - 10

S4

Acceso 



# Chapultepec 430

by JS<sup>a</sup>

-  Estancia/comedor
-  Cocina
-  1 Recámara
-  1 Baño
-  Terraza

Área total:  
**41.88 m<sup>2</sup>**

Interior:  
**37.64 m<sup>2</sup>**

Exterior:  
**4.24 m<sup>2</sup>**

Niveles:  
**2 - 10**





Contacto:  
Vita Bienes Raices  
[info@vitabienesraices.com](mailto:info@vitabienesraices.com)