

olea[®] at Cap Cana



olea
at Cap Cana



Olea at Cap Cana® es un proyecto de *Bluewave Group*® y *Strategy Partners*®
Todos los derechos reservados © 2021

Conoce al desarrollador



Ejecutivos fundadores con experiencia comprobada.

+ US\$3,100 Millones
En obras de construcción

+ US\$7,600 Millones
En inversiones inmobiliarias en más de 5 países.



División fundada en el 2017. Actualmente es la mayor productora de agregados en la Zona Este de República Dominicana.



División fundada en el 2018. Dedicada a infraestructura. Ha ejecutado proyectos de caminos vecinales, carreteras y rellenos extensos para proyectos hoteleros.



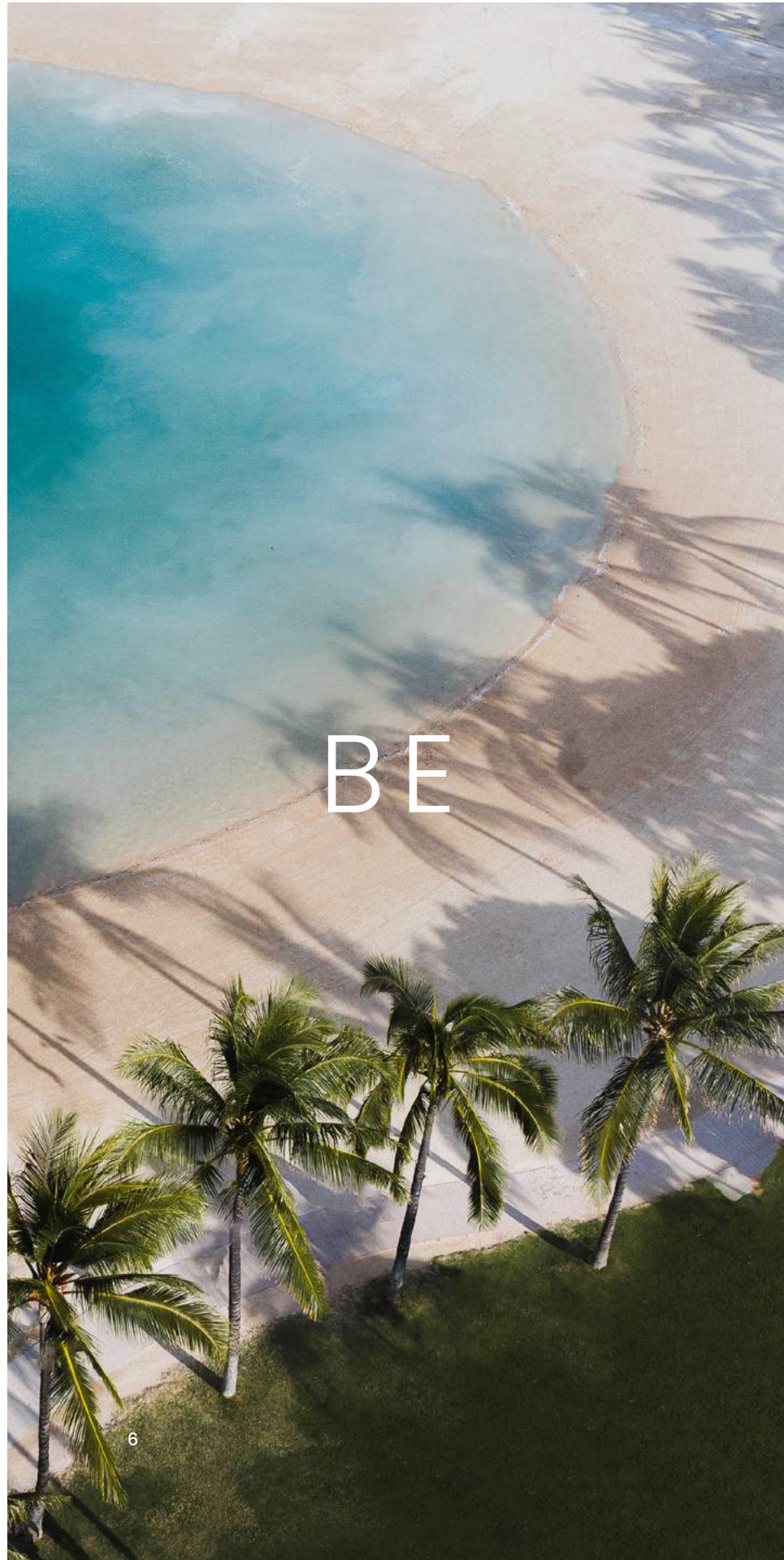
División fundada en el 2018. Dedicada a la reparación y asfaltado de calles en proyectos privados.



División fundada en el 2020 y actualmente cuenta con cinco proyectos en ejecución (Azure at Cap Cana, Palmas at Vista Cana 1 y 2, Park Place Costa Cana y Olea at Cap Cana) con una inversión total superior a los \$2,400 millones de pesos.



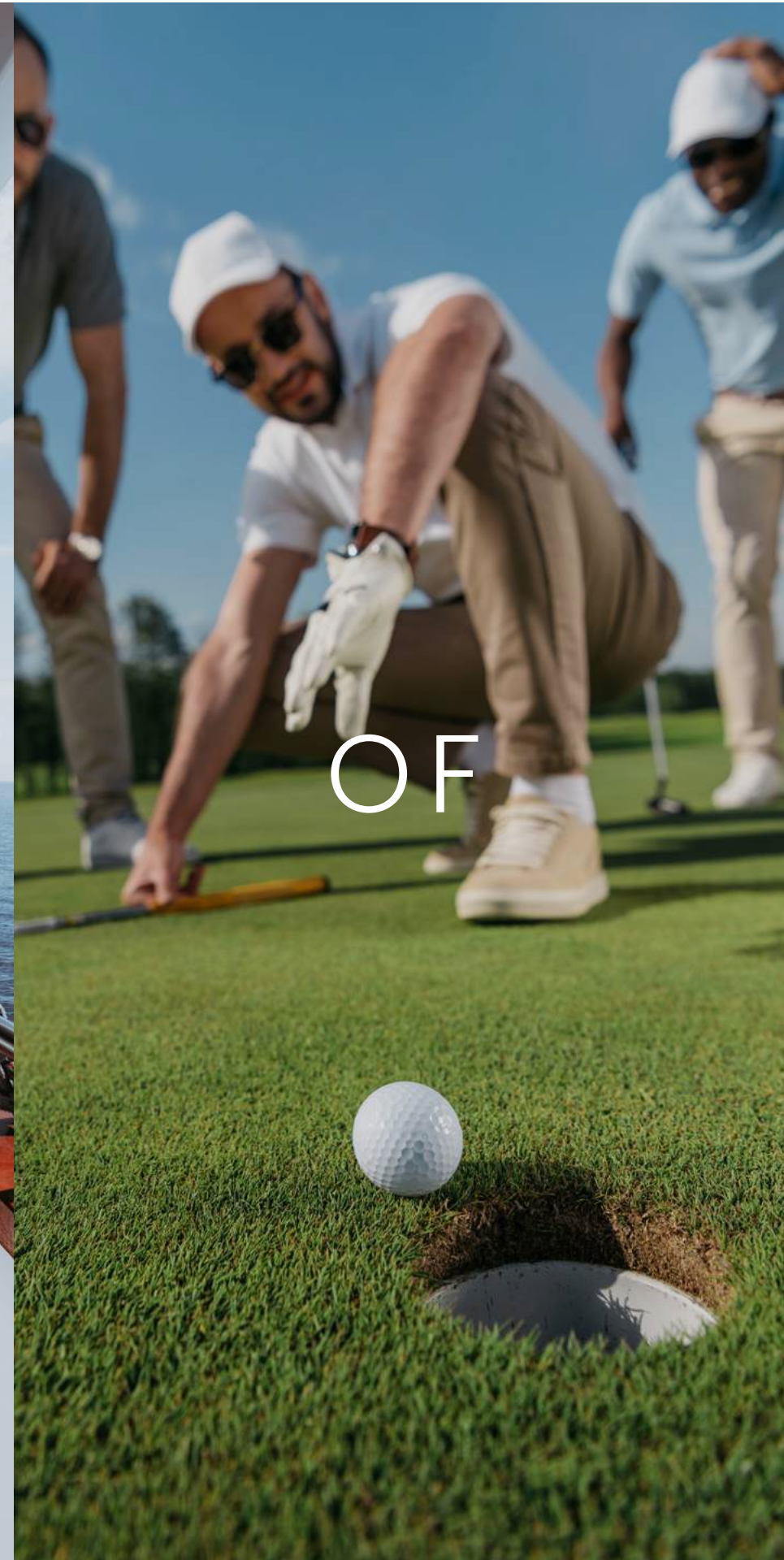
División fundada en el 2019. Actualmente es la principal concretera en el área residencial en Punta Cana Planta con la planta de producción de mayor capacidad en la zona.



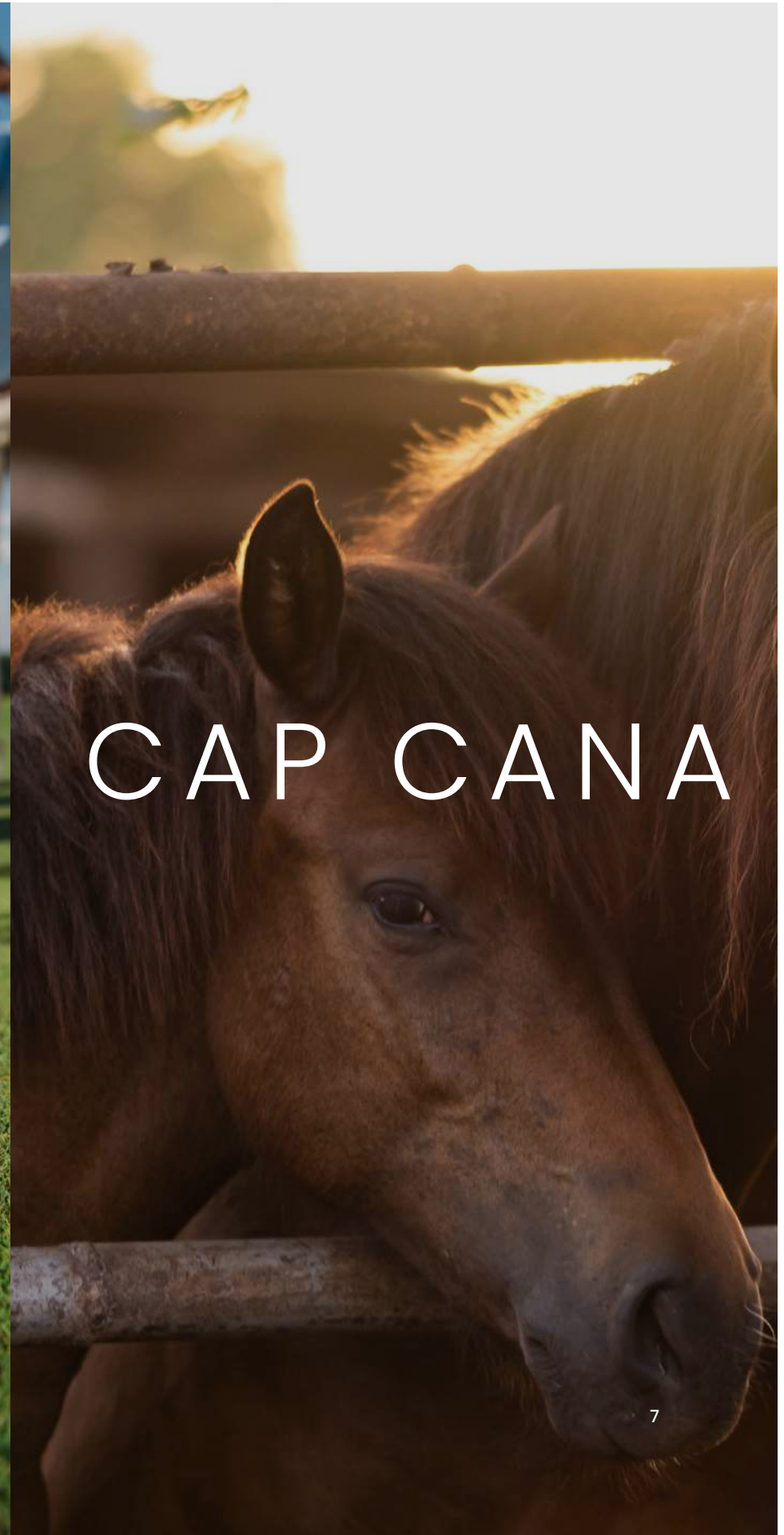
BE



PART



OF



CAP CANA



Juanillo Beach

Five miles of coastline, more than three miles of White sand beaches and crystal clear turquoise waters; our Juanillo Beach has been rated by UNESCO as one of the best in the world.

Ocho kilómetros de línea costera, unos cinco kilómetros de playas de arena blanca y aguas turquesas; nuestra Playa de Juanillo ha sido reconocida por UNESCO como una de las mejores del mundo.

3 minutes from Olea at Cap cana 
 A 3 minutos de Olea at Cap cana



Marina Cap Cana

Located on the eastern shores of the Dominican Republic, Cap Cana is an exclusive private community with all the attributes of an ecological wonderland. This luxury destination is the home of miles of pristine beaches, towering cliffs, a Jack Nicklaus signature golf course, an equestrian center, an ecological adventure park and a bustling marina.

Localizado en la costa este de República Dominicana, Cap Cana es una exclusiva comunidad privada con todos los atributos de un paraíso tropical que alberga kilómetros de playas cristalinas, un campo de golf de la firma Jack Nicklaus, centro ecuestre, parque de aventuras y una espectacular marina.



Punta Espada

Punta Espada is the first of three Jack Nicklaus Signature golf courses to be developed at Cap Cana. It is recognized as the best golf course in the Caribbean and Mexico and #35 in the world, with eight beautiful holes along the ocean and fifteen of its eighteen holes overlooking the Caribbean Sea. From all points of Punta Espada, golfers are blessed with extraordinary views of the Caribbean, where the sea contrasts against the emerald fairways and the perfect greens.

Punta Espada es el primero de tres campos de golf bajo el sello de Jack Nicklaus Signature a ser desarrollado en Cap Cana. Es reconocido como el mejor campo de golf del Caribe y México y como el #35 en el mundo, con ocho hoyos espectaculares bordeando el océano y quince hoyos con vistas hacia el Mar Caribe. Desde todos los rincones del campo de golf Punta Espada, los jugadores son bendecidos con vistas extraordinarias del Caribe, donde el azul del mar contrasta con el verde del campo de golf.

Los Establos

Los Establos is one of the most complete equestrian centers in the Caribbean, offering multiple disciplines such as dressage, equestrian jumping, polo, reining, cross country and others.

Los Establos, Ciudad Ecuere at Cap Cana, reúne las más variadas disciplinas ecuestres, tales como Salto, Polo, Paso Fino, Carreras, Dressage, Reining, Enduro, Cross Country, unido a sus áreas de entrenamientos, capacitación, recreación, salud y cuidado del animal. Se perfila como el más grande y completo Centro Ecuere del Caribe y Latinoamérica.



olea[®]

About the project

Sobre el proyecto

Located in the heart of Cap Cana, Olea at Cap Cana is an exclusive lakefront luxury residential community with 63 condo units, within a short distance from Juanillo Beach (3 Minutes).

Ubicada en el mismo corazón de Cap Cana, Olea at Cap Cana es una exclusiva comunidad de lujo con unas 63 unidades de apartamentos, a tres minutos de playa Juanillo.





3 minutes from
Juanillo Beach

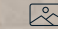
A 3 minutos de la Playa de Juanillo



Lobby

Residents and their guests are welcomed to Olea at the ground floor level by our lobby concierge.

Los residentes y sus invitados son recibidos en Olea en la planta baja por nuestro conserje en el lobby.

 *Renders are conceptual and subject to change.
Imágenes del proyecto son conceptuales y sujetas a cambios.*

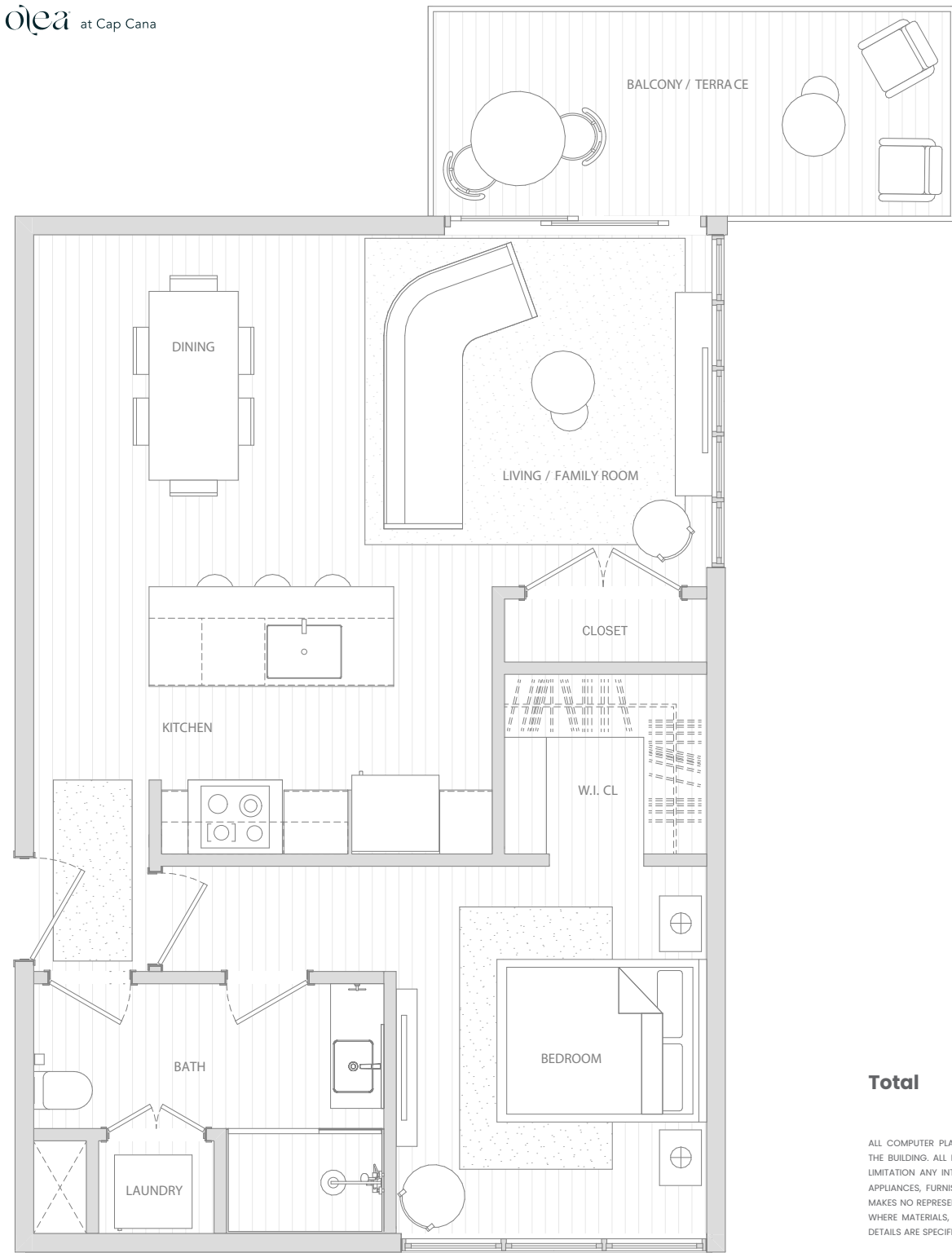


Amenidades   

- Clubhouse
 - Centro de Negocios
 - Gimnasio
 - Área de Billar
 - Área infantil
 - Muelle de Kayak con acceso al lago
 - Lago
 - Jacuzzis
 - Piscina
- Jardines con Vista al lago
 - Arena frente al lago
 - Concierge Lobby
 - Parque para mascotas
 - Estaciones de carga para vehículos eléctricos
 - Estaciones de carga para carritos de golf
 - Wellness área (con vista al lago)
 - Picnic Área
 - Putting Green



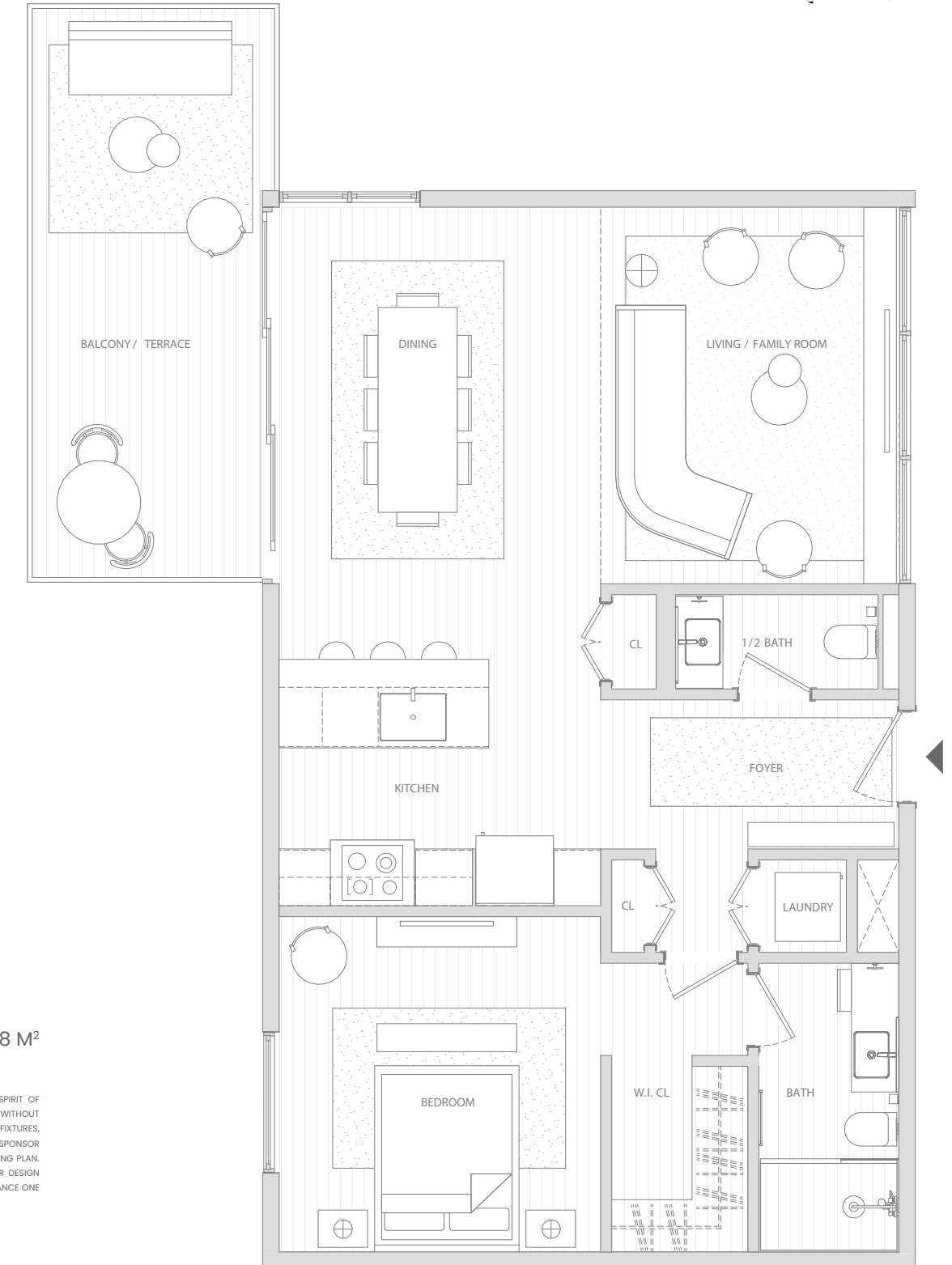




Unit A

Total 75.53 M²

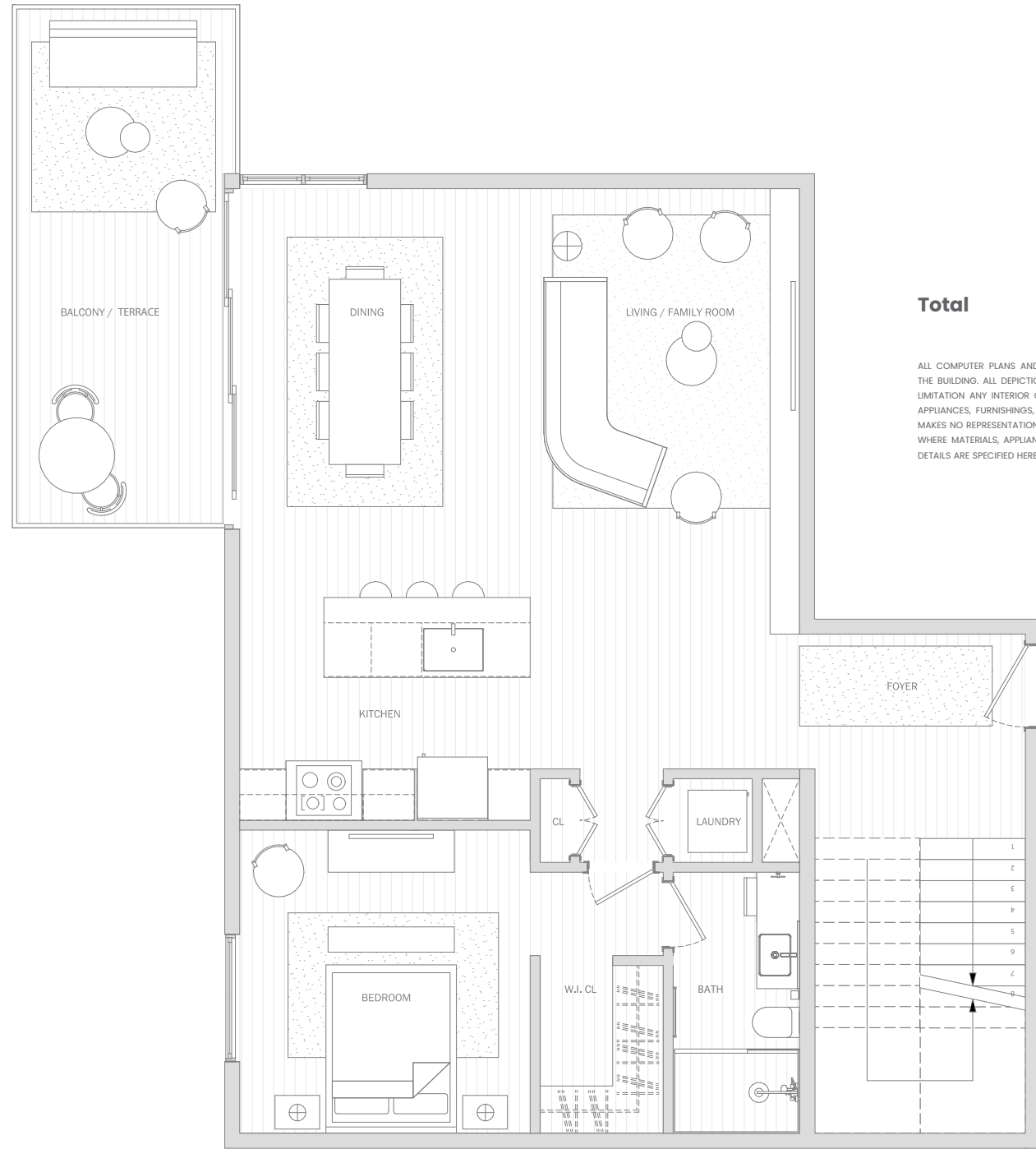
ALL COMPUTER PLANS AND/OR ARTIST RENDERINGS REFLECT THE PLANNED SCALE AND SPIRIT OF THE BUILDING. ALL DEPICTIONS OF THE CONDOMINIUM UNITS AND PROPERTY, INCLUDING WITHOUT LIMITATION ANY INTERIOR OR EXTERIOR FURNITURE, EQUIPMENT, DECORATIONS, FINISHES, FIXTURES, APPLIANCES, FURNISHINGS, AND LANDSCAPING, ARE FOR ILLUSTRATIVE PURPOSES ONLY. SPONSOR MAKES NO REPRESENTATIONS OR WARRANTIES EXCEPT AS MAY BE SET FORTH IN THE OFFERING PLAN. WHERE MATERIALS, APPLIANCES, EQUIPMENT, FIXTURES, AND/OR OTHER CONSTRUCTION OR DESIGN DETAILS ARE SPECIFIED HEREIN, SPONSOR RESERVES THE RIGHT TO SUBSTITUTE IN EACH INSTANCE ONE OF COMPARABLE OR BETTER QUALITY AS RECOGNIZED BY INDUSTRY.



Unit B

Total 95.28 M²

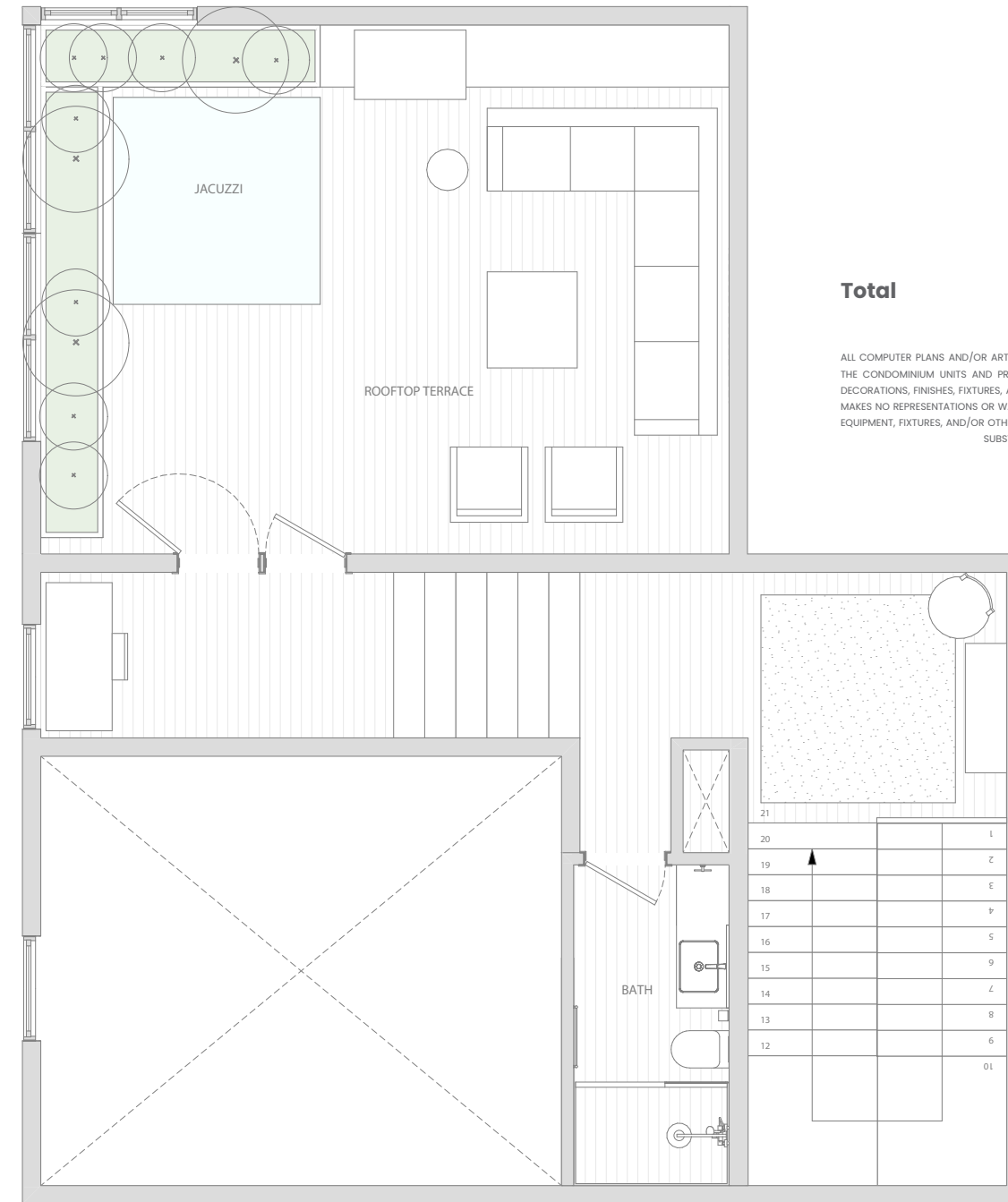
ALL COMPUTER PLANS AND/OR ARTIST RENDERINGS REFLECT THE PLANNED SCALE AND SPIRIT OF THE BUILDING. ALL DEPICTIONS OF THE CONDOMINIUM UNITS AND PROPERTY, INCLUDING WITHOUT LIMITATION ANY INTERIOR OR EXTERIOR FURNITURE, EQUIPMENT, DECORATIONS, FINISHES, FIXTURES, APPLIANCES, FURNISHINGS, AND LANDSCAPING, ARE FOR ILLUSTRATIVE PURPOSES ONLY. SPONSOR MAKES NO REPRESENTATIONS OR WARRANTIES EXCEPT AS MAY BE SET FORTH IN THE OFFERING PLAN. WHERE MATERIALS, APPLIANCES, EQUIPMENT, FIXTURES, AND/OR OTHER CONSTRUCTION OR DESIGN DETAILS ARE SPECIFIED HEREIN, SPONSOR RESERVES THE RIGHT TO SUBSTITUTE IN EACH INSTANCE ONE OF COMPARABLE OR BETTER QUALITY AS RECOGNIZED BY INDUSTRY.



Unit B-PH 01

Total 177.38 M²

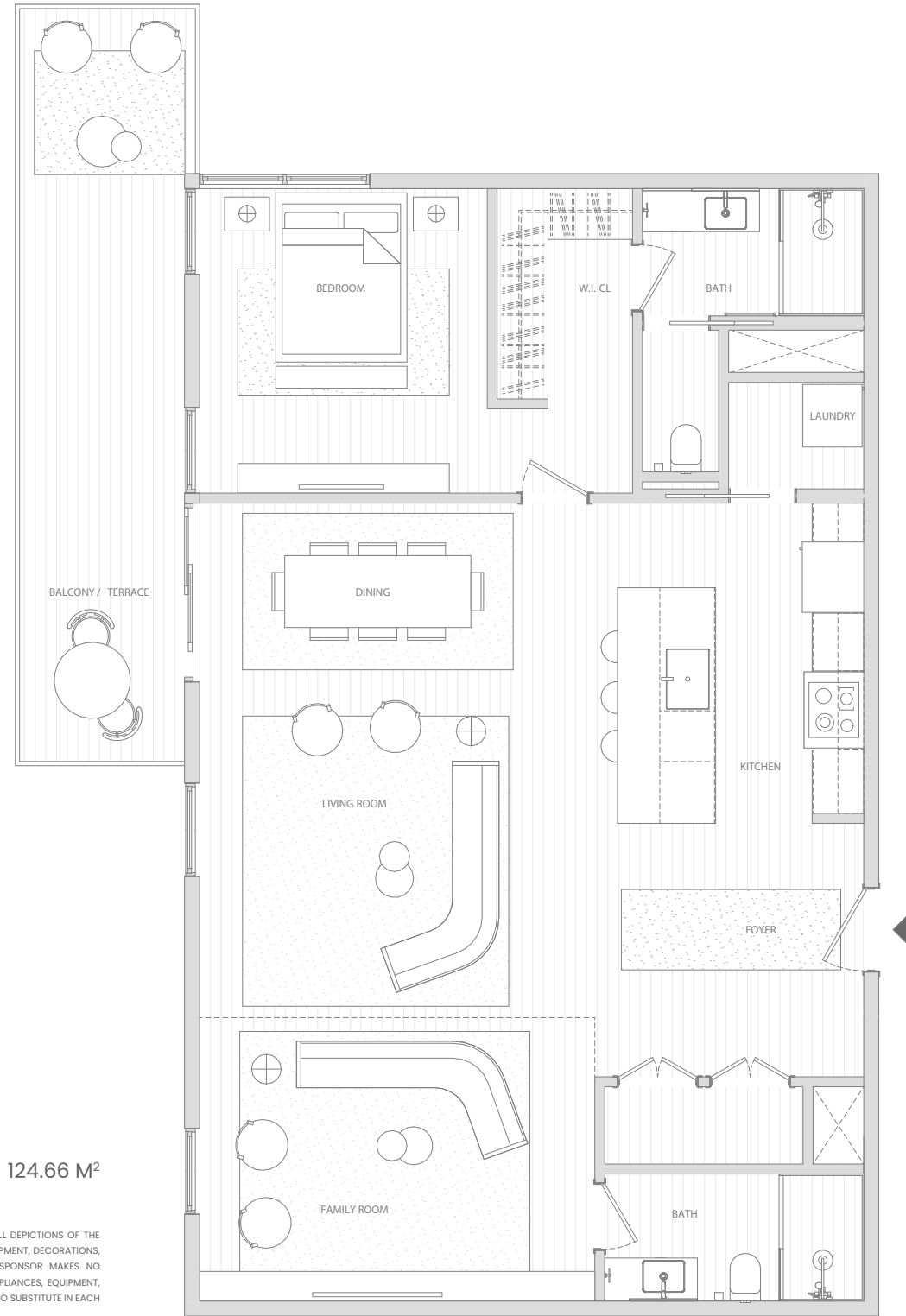
ALL COMPUTER PLANS AND/OR ARTIST RENDERINGS REFLECT THE PLANNED SCALE AND SPIRIT OF THE BUILDING. ALL DEPICTIONS OF THE CONDOMINIUM UNITS AND PROPERTY, INCLUDING WITHOUT LIMITATION ANY INTERIOR OR EXTERIOR FURNITURE, EQUIPMENT, DECORATIONS, FINISHES, FIXTURES, APPLIANCES, FURNISHINGS, AND LANDSCAPING, ARE FOR ILLUSTRATIVE PURPOSES ONLY. SPONSOR MAKES NO REPRESENTATIONS OR WARRANTIES EXCEPT AS MAY BE SET FORTH IN THE OFFERING PLAN. WHERE MATERIALS, APPLIANCES, EQUIPMENT, FIXTURES, AND/OR OTHER CONSTRUCTION OR DESIGN DETAILS ARE SPECIFIED HEREIN, SPONSOR RESERVES THE RIGHT TO SUBSTITUTE IN EACH INSTANCE ONE OF COMPARABLE OR BETTER QUALITY AS RECOGNIZED BY INDUSTRY.



Unit B-PH 02

Total 177.38 M²

ALL COMPUTER PLANS AND/OR ARTIST RENDERINGS REFLECT THE PLANNED SCALE AND SPIRIT OF THE BUILDING. ALL DEPICTIONS OF THE CONDOMINIUM UNITS AND PROPERTY, INCLUDING WITHOUT LIMITATION ANY INTERIOR OR EXTERIOR FURNITURE, EQUIPMENT, DECORATIONS, FINISHES, FIXTURES, APPLIANCES, FURNISHINGS, AND LANDSCAPING, ARE FOR ILLUSTRATIVE PURPOSES ONLY. SPONSOR MAKES NO REPRESENTATIONS OR WARRANTIES EXCEPT AS MAY BE SET FORTH IN THE OFFERING PLAN. WHERE MATERIALS, APPLIANCES, EQUIPMENT, FIXTURES, AND/OR OTHER CONSTRUCTION OR DESIGN DETAILS ARE SPECIFIED HEREIN, SPONSOR RESERVES THE RIGHT TO SUBSTITUTE IN EACH INSTANCE ONE OF COMPARABLE OR BETTER QUALITY AS RECOGNIZED BY INDUSTRY.

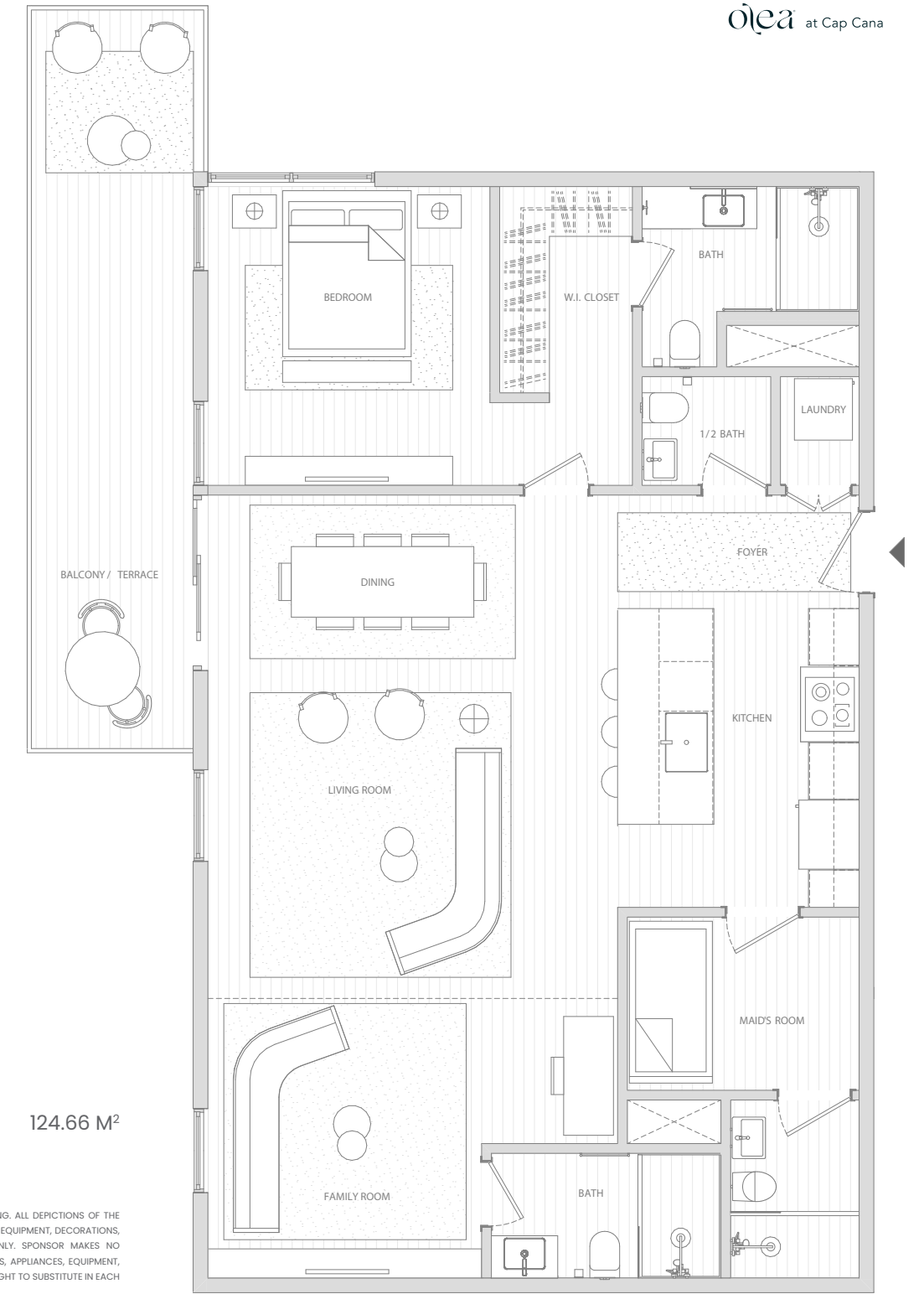


Unit C

Total

124.66 M²

ALL COMPUTER PLANS AND/OR ARTIST RENDERINGS REFLECT THE PLANNED SCALE AND SPIRIT OF THE BUILDING. ALL DEPICTIONS OF THE CONDOMINIUM UNITS AND PROPERTY, INCLUDING WITHOUT LIMITATION ANY INTERIOR OR EXTERIOR FURNITURE, EQUIPMENT, DECORATIONS, FINISHES, FIXTURES, APPLIANCES, FURNISHINGS, AND LANDSCAPING, ARE FOR ILLUSTRATIVE PURPOSES ONLY. SPONSOR MAKES NO REPRESENTATIONS OR WARRANTIES EXCEPT AS MAY BE SET FORTH IN THE OFFERING PLAN. WHERE MATERIALS, APPLIANCES, EQUIPMENT, FIXTURES, AND/OR OTHER CONSTRUCTION OR DESIGN DETAILS ARE SPECIFIED HEREIN, SPONSOR RESERVES THE RIGHT TO SUBSTITUTE IN EACH INSTANCE ONE OF COMPARABLE OR BETTER QUALITY AS RECOGNIZED BY INDUSTRY.



Unit C1

Total

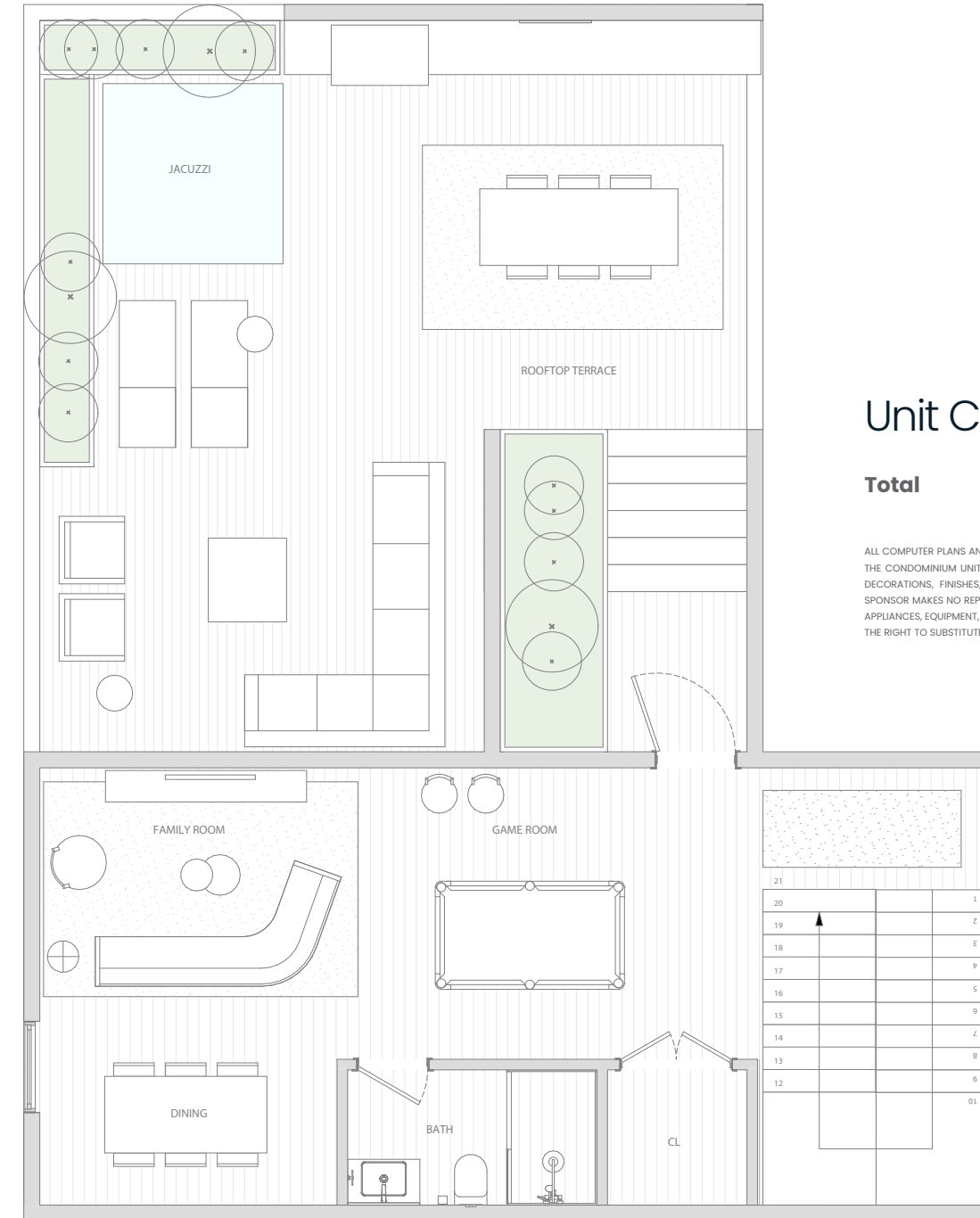
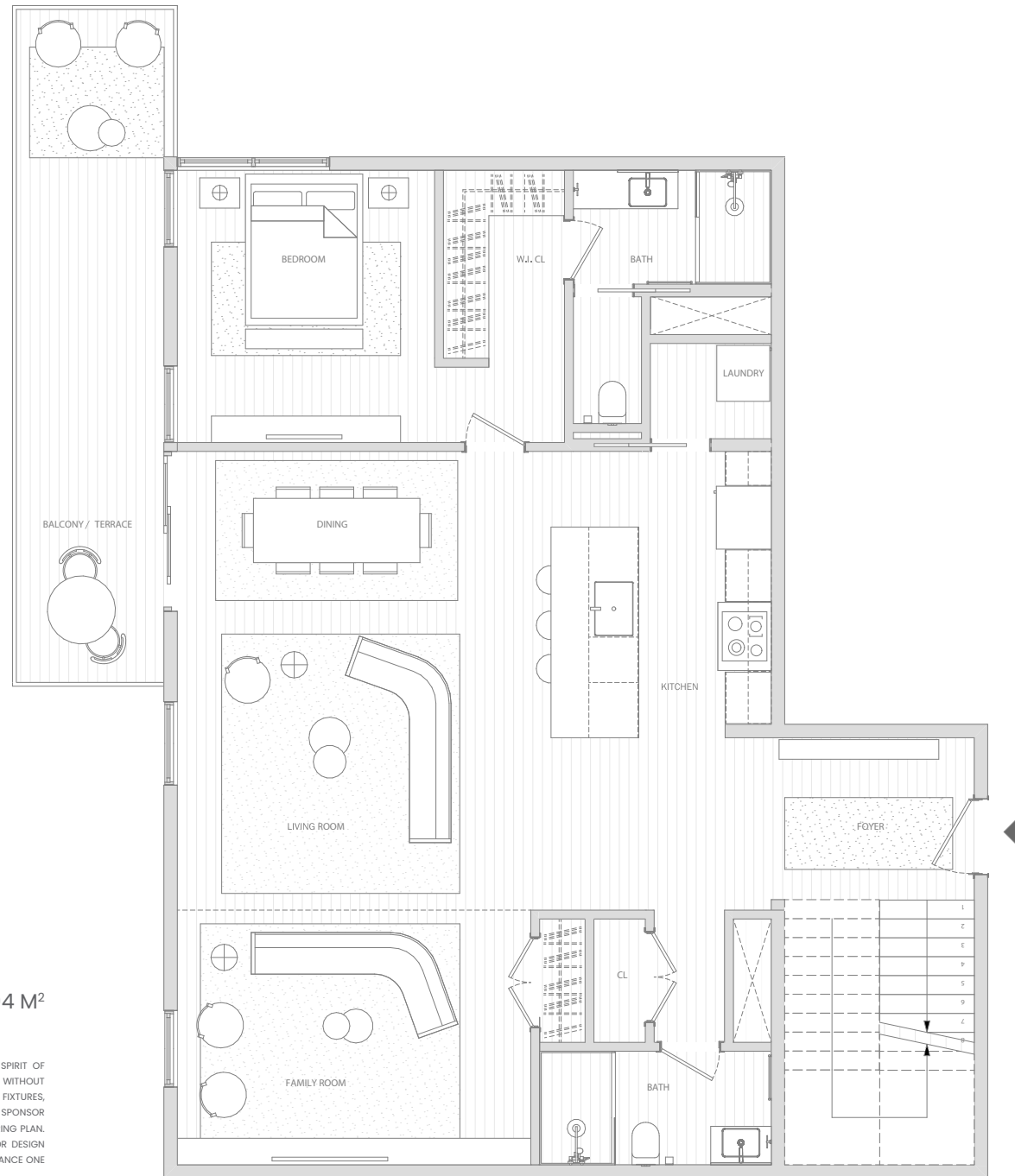
124.66 M²

ALL COMPUTER PLANS AND/OR ARTIST RENDERINGS REFLECT THE PLANNED SCALE AND SPIRIT OF THE BUILDING. ALL DEPICTIONS OF THE CONDOMINIUM UNITS AND PROPERTY, INCLUDING WITHOUT LIMITATION ANY INTERIOR OR EXTERIOR FURNITURE, EQUIPMENT, DECORATIONS, FINISHES, FIXTURES, APPLIANCES, FURNISHINGS, AND LANDSCAPING, ARE FOR ILLUSTRATIVE PURPOSES ONLY. SPONSOR MAKES NO REPRESENTATIONS OR WARRANTIES EXCEPT AS MAY BE SET FORTH IN THE OFFERING PLAN. WHERE MATERIALS, APPLIANCES, EQUIPMENT, FIXTURES, AND/OR OTHER CONSTRUCTION OR DESIGN DETAILS ARE SPECIFIED HEREIN, SPONSOR RESERVES THE RIGHT TO SUBSTITUTE IN EACH INSTANCE ONE OF COMPARABLE OR BETTER QUALITY AS RECOGNIZED BY INDUSTRY.

Unit C-PH 01

Total 257.94 M²

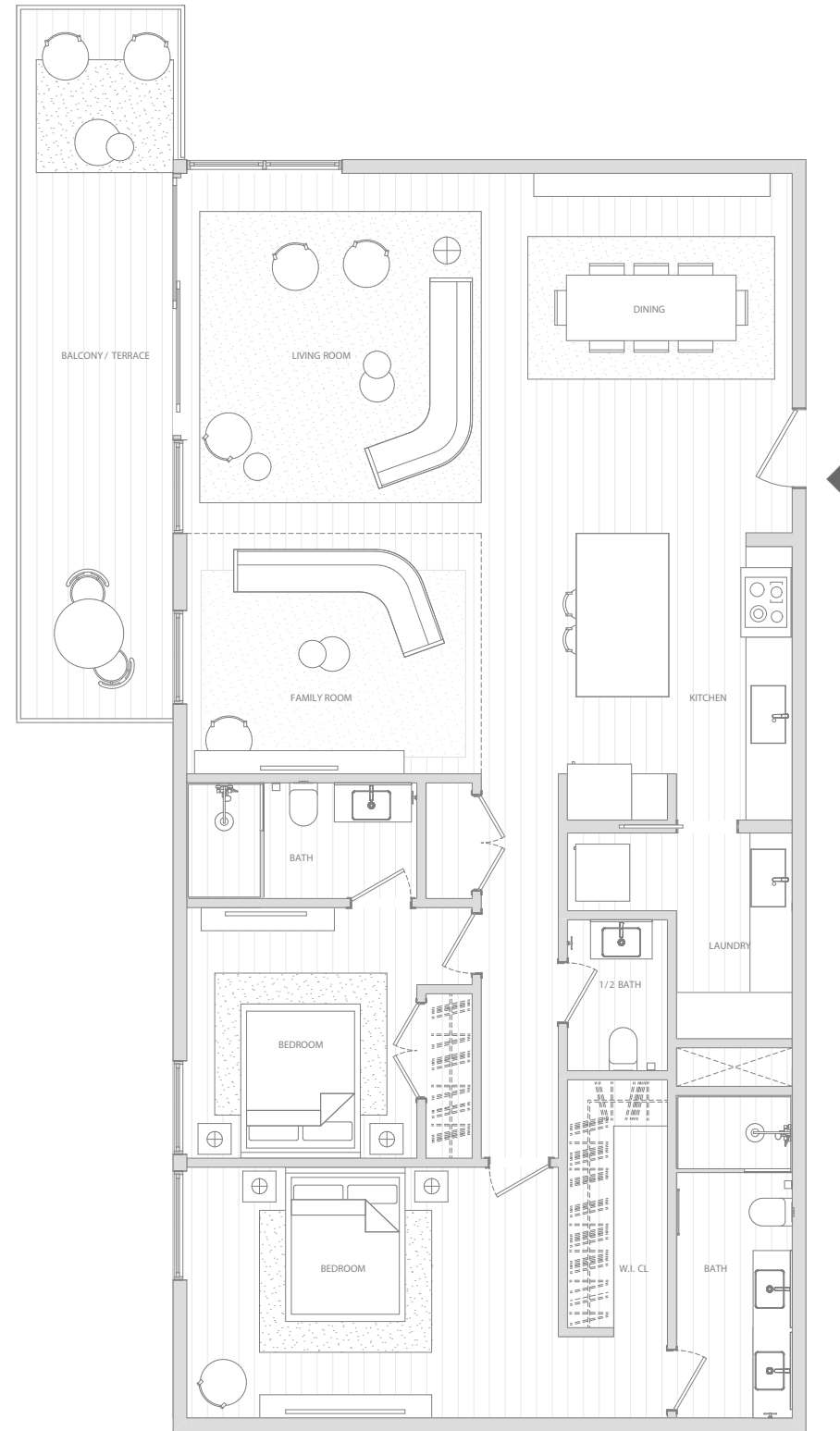
ALL COMPUTER PLANS AND/OR ARTIST RENDERINGS REFLECT THE PLANNED SCALE AND SPIRIT OF THE BUILDING. ALL DEPICTIONS OF THE CONDOMINIUM UNITS AND PROPERTY, INCLUDING WITHOUT LIMITATION ANY INTERIOR OR EXTERIOR FURNITURE, EQUIPMENT, DECORATIONS, FINISHES, FIXTURES, APPLIANCES, FURNISHINGS, AND LANDSCAPING, ARE FOR ILLUSTRATIVE PURPOSES ONLY. SPONSOR MAKES NO REPRESENTATIONS OR WARRANTIES EXCEPT AS MAY BE SET FORTH IN THE OFFERING PLAN. WHERE MATERIALS, APPLIANCES, EQUIPMENT, FIXTURES, AND/OR OTHER CONSTRUCTION OR DESIGN DETAILS ARE SPECIFIED HEREIN, SPONSOR RESERVES THE RIGHT TO SUBSTITUTE IN EACH INSTANCE ONE OF COMPARABLE OR BETTER QUALITY AS RECOGNIZED BY INDUSTRY.



Unit C-PH 02

Total 257.94 M²

ALL COMPUTER PLANS AND/OR ARTIST RENDERINGS REFLECT THE PLANNED SCALE AND SPIRIT OF THE BUILDING. ALL DEPICTIONS OF THE CONDOMINIUM UNITS AND PROPERTY, INCLUDING WITHOUT LIMITATION ANY INTERIOR OR EXTERIOR FURNITURE, EQUIPMENT, DECORATIONS, FINISHES, FIXTURES, APPLIANCES, FURNISHINGS, AND LANDSCAPING, ARE FOR ILLUSTRATIVE PURPOSES ONLY. SPONSOR MAKES NO REPRESENTATIONS OR WARRANTIES EXCEPT AS MAY BE SET FORTH IN THE OFFERING PLAN. WHERE MATERIALS, APPLIANCES, EQUIPMENT, FIXTURES, AND/OR OTHER CONSTRUCTION OR DESIGN DETAILS ARE SPECIFIED HEREIN, SPONSOR RESERVES THE RIGHT TO SUBSTITUTE IN EACH INSTANCE ONE OF COMPARABLE OR BETTER QUALITY AS RECOGNIZED BY INDUSTRY.

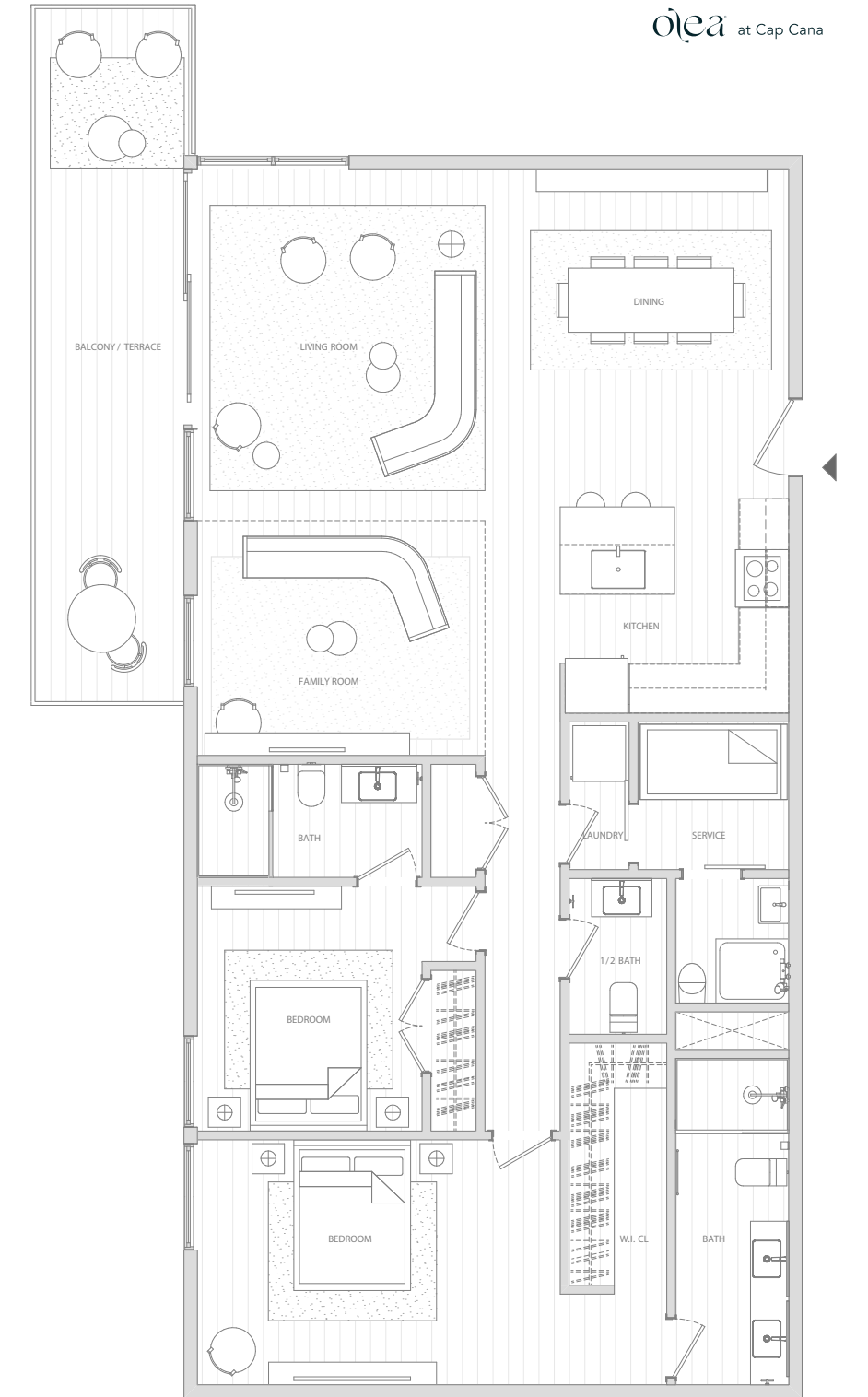


Unit D

Total

151.55 M²

ALL COMPUTER PLANS AND/OR ARTIST RENDERINGS REFLECT THE PLANNED SCALE AND SPIRIT OF THE BUILDING. ALL DEPICTIONS OF THE CONDOMINIUM UNITS AND PROPERTY, INCLUDING WITHOUT LIMITATION ANY INTERIOR OR EXTERIOR FURNITURE, EQUIPMENT, DECORATIONS, FINISHES, FIXTURES, APPLIANCES, FURNISHINGS, AND LANDSCAPING, ARE FOR ILLUSTRATIVE PURPOSES ONLY. SPONSOR MAKES NO REPRESENTATIONS OR WARRANTIES EXCEPT AS MAY BE SET FORTH IN THE OFFERING PLAN. WHERE MATERIALS, APPLIANCES, EQUIPMENT, FIXTURES, AND/OR OTHER CONSTRUCTION OR DESIGN DETAILS ARE SPECIFIED HEREIN, SPONSOR RESERVES THE RIGHT TO SUBSTITUTE IN EACH INSTANCE ONE OF COMPARABLE OR BETTER QUALITY AS RECOGNIZED BY INDUSTRY.

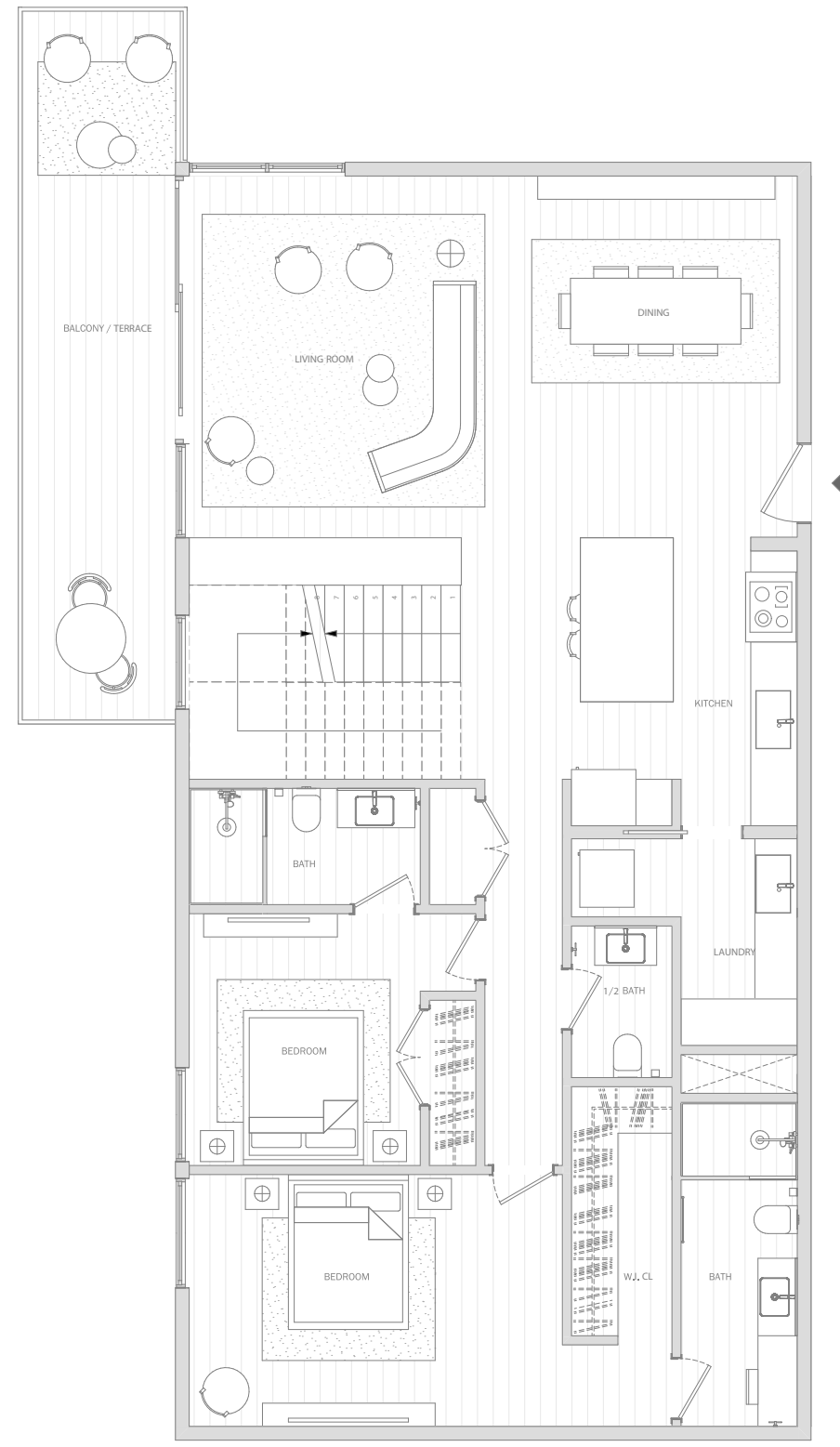


Unit D1

Total

151.55 M²

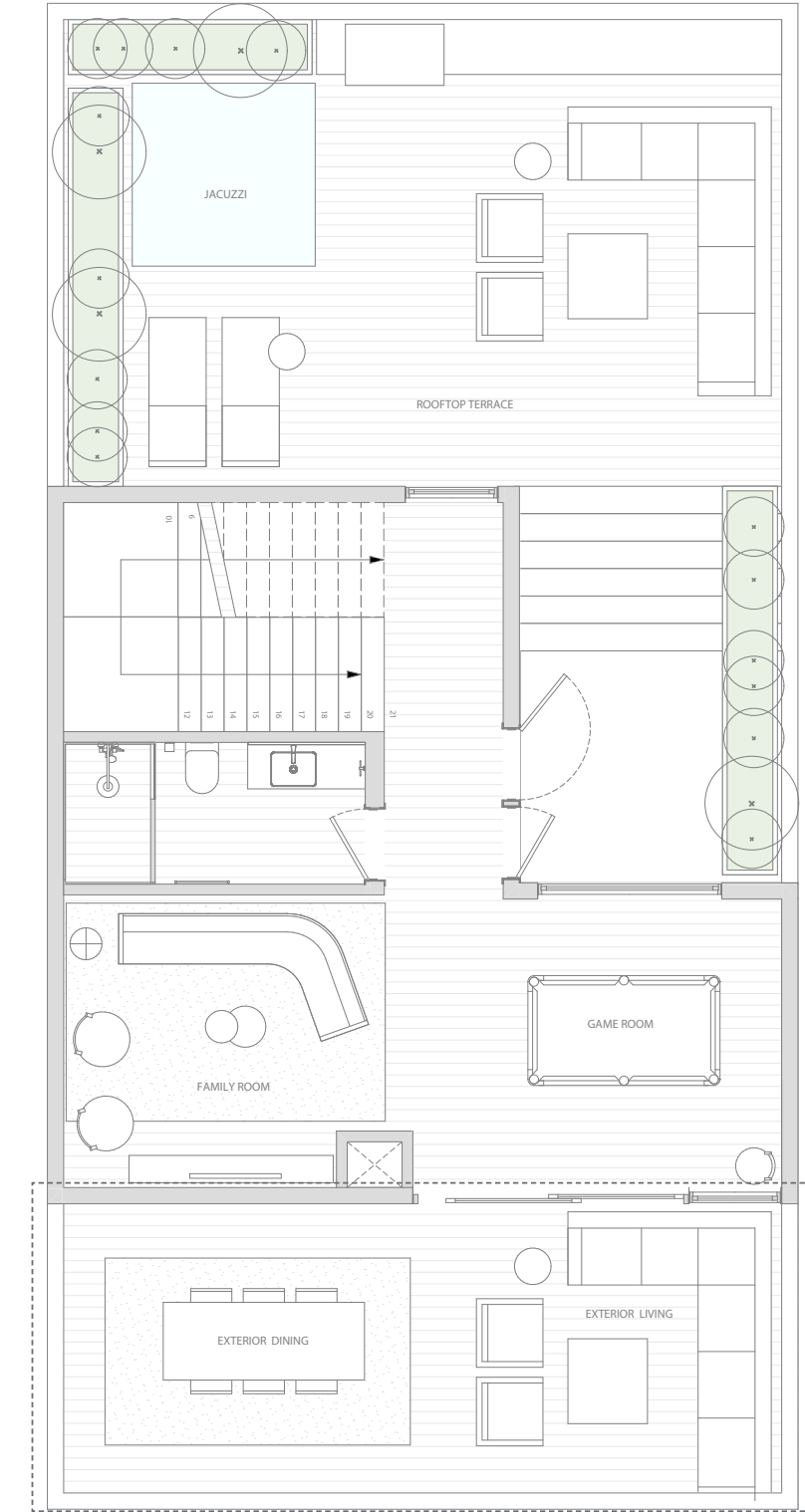
ALL COMPUTER PLANS AND/OR ARTIST RENDERINGS REFLECT THE PLANNED SCALE AND SPIRIT OF THE BUILDING. ALL DEPICTIONS OF THE CONDOMINIUM UNITS AND PROPERTY, INCLUDING WITHOUT LIMITATION ANY INTERIOR OR EXTERIOR FURNITURE, EQUIPMENT, DECORATIONS, FINISHES, FIXTURES, APPLIANCES, FURNISHINGS, AND LANDSCAPING, ARE FOR ILLUSTRATIVE PURPOSES ONLY. SPONSOR MAKES NO REPRESENTATIONS OR WARRANTIES EXCEPT AS MAY BE SET FORTH IN THE OFFERING PLAN. WHERE MATERIALS, APPLIANCES, EQUIPMENT, FIXTURES, AND/OR OTHER CONSTRUCTION OR DESIGN DETAILS ARE SPECIFIED HEREIN, SPONSOR RESERVES THE RIGHT TO SUBSTITUTE IN EACH INSTANCE ONE OF COMPARABLE OR BETTER QUALITY AS RECOGNIZED BY INDUSTRY.



Unit D-PH 01

Total 245.87 M²

ALL COMPUTER PLANS AND/OR ARTIST RENDERINGS REFLECT THE PLANNED SCALE AND SPIRIT OF THE BUILDING. ALL DEPICTIONS OF THE CONDOMINIUM UNITS AND PROPERTY, INCLUDING WITHOUT LIMITATION ANY INTERIOR OR EXTERIOR FURNITURE, EQUIPMENT, DECORATIONS, FINISHES, FIXTURES, APPLIANCES, FURNISHINGS, AND LANDSCAPING, ARE FOR ILLUSTRATIVE PURPOSES ONLY. SPONSOR MAKES NO REPRESENTATIONS OR WARRANTIES EXCEPT AS MAY BE SET FORTH IN THE OFFERING PLAN. WHERE MATERIALS, APPLIANCES, EQUIPMENT, FIXTURES, AND/OR OTHER CONSTRUCTION OR DESIGN DETAILS ARE SPECIFIED HEREIN, SPONSOR RESERVES THE RIGHT TO SUBSTITUTE IN EACH INSTANCE ONE OF COMPARABLE OR BETTER QUALITY AS RECOGNIZED BY INDUSTRY.



Unit D-PH 02

Total 245.87 M²

ALL COMPUTER PLANS AND/OR ARTIST RENDERINGS REFLECT THE PLANNED SCALE AND SPIRIT OF THE BUILDING. ALL DEPICTIONS OF THE CONDOMINIUM UNITS AND PROPERTY, INCLUDING WITHOUT LIMITATION ANY INTERIOR OR EXTERIOR FURNITURE, EQUIPMENT, DECORATIONS, FINISHES, FIXTURES, APPLIANCES, FURNISHINGS, AND LANDSCAPING, ARE FOR ILLUSTRATIVE PURPOSES ONLY. SPONSOR MAKES NO REPRESENTATIONS OR WARRANTIES EXCEPT AS MAY BE SET FORTH IN THE OFFERING PLAN. WHERE MATERIALS, APPLIANCES, EQUIPMENT, FIXTURES, AND/OR OTHER CONSTRUCTION OR DESIGN DETAILS ARE SPECIFIED HEREIN, SPONSOR RESERVES THE RIGHT TO SUBSTITUTE IN EACH INSTANCE ONE OF COMPARABLE OR BETTER QUALITY AS RECOGNIZED BY INDUSTRY.

Buyer Benefits

- Access to Cap Cana Resort facilities including beaches
- Option to acquire a boat slip at Cap Cana Marina
- Preferred Rate at Cap Cana Heritage School
- Property is exempt from 3% real estate transfer tax and 1% annual real estate property tax for 15 years
- *Acceso a las facilidades de Cap Cana incluyendo las playas*
- *Opción de adquirir un amarre en la Marina de Cap Cana*
- *Tarifa preferencial en el Cap Cana Heritage School*
- *Propiedad exenta del impuesto de transferencia inmobiliaria del 3% y del impuesto sobre la propiedad inmobiliaria (IPI) del 1% anual durante 15 años*

Payment

Flexible payment structure*

*Plan de Pago Flexible**

1. US\$5,000 to reserve
2. Complete 10% at contract signing
3. 40% during construction
4. 50% at unit hand-over (March 2024)

1. *Separa tu unidad con US\$5,000*
2. *Completas con un 10% a la firma del contrato*
3. *40% durante la construcción*
4. *50% final contra-entrega (Marzo 2024)*

*Ask us about our payment structures and discounts tailored for investors.

**Pregúntenos sobre nuestros esquemas de pagos y descuentos para inversionistas.*

olea[®] at Cap Cana